

Obituaries

Deloris Louise Zuege Sept. 16, 1928 - Feb. 3, 2014



Zuege

Deloris Louise (Bier) Zuege was born Sept. 16, 1928, in Cheyenne County, Kan., to Emanuel and Louise (Lampe) Bier. She died on Feb. 3, 2014, at the age of 85 in Wray, Colo.

Deloris spent the early years of her life living in various places in Kansas and Colorado. In 1940, her parents moved to a farm southeast of Haigler, Neb. There she finished her elementary education in a one-room schoolhouse and completed her education by attending high school in St. Francis, graduating in 1947.

On Aug. 3, 1947, she was united in marriage to Herman Zuege. They made their home on a farm in Kansas next to the farm she had grown up on.

To this union were born four children, Marsha, Louise, Gary and Roger. During the next 53 years, she helped her husband farm and raised three children. Besides being a busy homemaker, she enjoyed quilting, embroidering and crocheting, which were used as gifts throughout the years.

In 2000, she moved to Haigler and in the years that followed she

continued to be very active in the community activities. She was a member of the Lady's VFW Auxiliary, The Red Hatters Club, and the Golden Inn. One of her most rewarding activities was going to the elementary school in Haigler and having the young students there read to her.

As an infant, she was baptized in the Lutheran Church, and years later she was confirmed. When she died she was still an active member of the Lutheran Church in Haigler.

Preceding her in death was her husband of 53 years and an infant daughter, her parents, and one brother, Loren.

She is survived by a sister, Almeda Bier of Longmont, Colo., three children, Louise Thomsen and husband, Harry of Watts, Okla., Gary Zuege and wife, Pam of Wray, and Roger Zuege of Haigler, 10 grandchildren, two step-grandchildren, 10 great-grandchildren and two step-great-grandchildren, plus a host of brothers and sisters-in-law, nieces and nephews.

Funeral services were held Monday, Feb. 10, at the Zion Lutheran Church in Haigler with Pastor Chris Farmer officiating. Interment was held in the Haigler Cemetery. Memorials may be made to the Golden Inn Senior Center in Haigler.

Curtis D. Wiley

Dec. 16, 1971 - Jan. 29, 2014

Curtis D. Wiley, 41, Colorado Springs, Colo., formerly of Goodland, died Wednesday, Jan. 29, 2014, at his home following an illness.

He was born Dec. 16, 1971, in Goodland, the son of Robert and Lola Wiley. In 1990 he graduated from Goodland High School.

In November 2010 he married Marcie Burger.

A diehard Denver Broncos fan, he had close friends he met over the years that will never forget him.

Survivors include his wife, his mother, of Goodland; three children, Cassandra (Christopher) Pena, Green Bay, Wis.; Brittnee Wiley, Wichita; and Justice Wiley, Bird City; two brothers, Mike Riley, Brewster; and Max Riley, Goodland; and two grandchildren. Memorial services will be later.

The family suggests memorials in his name in care of the Dove Witt Family Mortuary, 6630 S. U.S. 85-87, Fountain, Colo., 80817.

High Plains Co-op provides supplies

By Janet Carman

From farmer to consumer, the High Plains Food Co-op, has been providing locally produced food in our area since 2008. The co-op is a grassroots network of High Plains and Rocky Mountain Front Range producers and consumers uniting interests in locally grown food and other locally made products.

In 2012, the co-op had over 500 locally grown food and agricultural products for sale online (www.highplainsfood.org). During the growing season, the item count neared 700 from around 30 producers.

In 2013 the co-op had 385 members and 48 active producers. Klie Farms of Cheyenne County is one of the local producers. They provide organic grains and meats to co-op consumers.

First certified in 2004, they have

been inspected every year since to maintain that certification.

"There is a lot of paperwork and regulations," said Jo Ann Klie, "but it's worth it." They have recently begun producing Turkey Red Heritage wheat, which was first introduced to Kansas farmers in the late 1800s. The flour ground from these berries is rich in nutrients and taste.

Sue Griffin, St. Francis co-op customer, said fresh eggs, organic meat, wonderful cheese, produce (including lettuce in winter), best applesauce ever, just to name a few of her favorites, are from High Plains Food Coop, and all from local sources here in western Kansas and eastern Colorado. It is easy online ordering, with pick-up here in town.

Jo Hagney, St. Francis, treasurer, encourages those interested to learn more about High Plains



High Plains Food Co-op provides organic grains and meats to customers.

Photo provided by Janet Carman

Food Co-op by checking out their website, www.highplainsfood.org; liking them on Facebook; or following them on Twitter. "High Plains Food Co-op brings the family farm to you!" added Becky Roberson, coop vice president of producers.

Kansas to be offered national initiatives

Eric B. Banks, State Conservationist with U.S. Department of Agriculture's (USDA) Natural Resources Conservation Service (NRCS) announces three National Initiatives being offered in Kansas through the Environmental Quality Incentives Program (EQIP):

On-Farm Energy, Organic, and Seasonal High Tunnel.

While NRCS accepts applications for EQIP on a continuous basis throughout the year, there will be two sign-up periods, with cutoff deadlines of Feb. 21, 2014, and April 18, 2014, for the On-Farm Energy, Organic, and Seasonal High Tunnel Initiatives.

"We encourage our producers to take advantage of the conservation

opportunities being made available to them through these EQIP Initiatives," Banks said.

Initiatives Overview

On-Farm Energy Initiative: Producers work with an NRCS-approved Technical Service Provider (TSP) to develop Agricultural Energy Management Plans or farm energy audits that assess energy consumption on an operation. NRCS may also provide assistance to implement various recommended measures identified in the energy audit through the use of conservation practice standards offered through this initiative.

Organic Initiative: NRCS will assist producers with installation of conservation practices on agricultural operations related to

organic production. Producers currently certified as organic, transitioning to organic, or National Organic Program exempt will have access to a broad set of conservation practices to assist in treating their resource concerns while fulfilling many of the requirements in an Organic System Plan.

Seasonal High Tunnel Initiative: NRCS helps producers implement high tunnels that extend growing seasons for high value crops in an environmentally safe manner. High tunnel benefits include better plant and soil quality and fewer nutrients and pesticides in the environment.

Eligibility

EQIP offers financial and technical assistance to eligible participants to install or implement

structural and management practices on eligible agricultural land. Conservation practices must be implemented to NRCS standards and specifications. In Kansas, socially disadvantaged, limited resource, and beginning farmers and ranchers will receive a higher payment rate for eligible conservation practices applied.

Information Available

For more information about EQIP, or other programs offered by NRCS, please contact your local USDA Service Center or go to the Web site www.ks.nrcs.usda.gov. Follow us on Twitter @NRCS_Kansas.

USDA is an equal opportunity provider and employer.

Antiques • Collectibles • Glassware • Miscellaneous • Tools

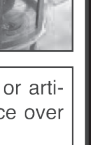
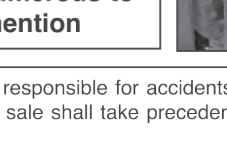
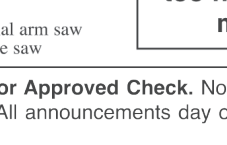
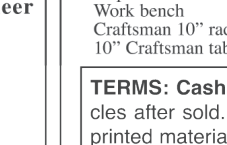
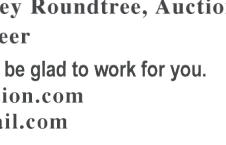
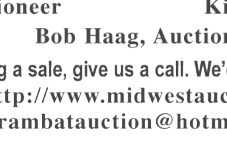
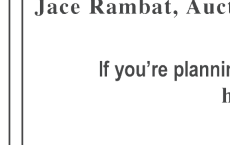
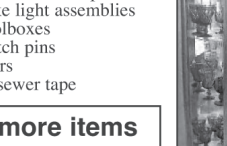
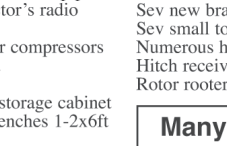
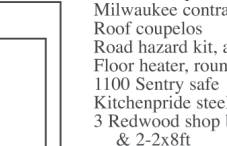
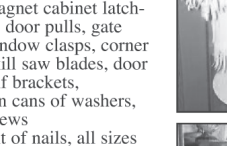
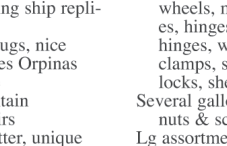
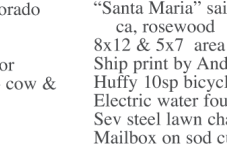
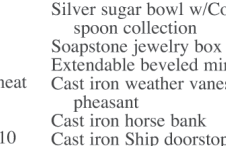
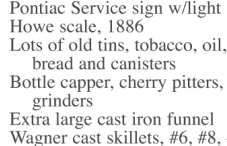
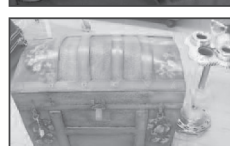
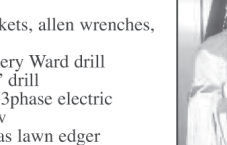
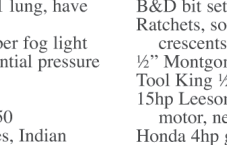
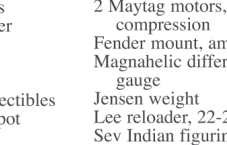
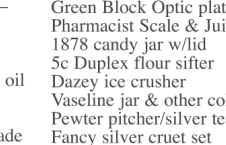
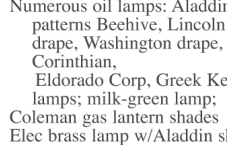
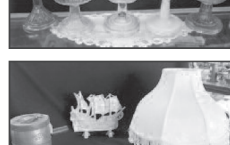
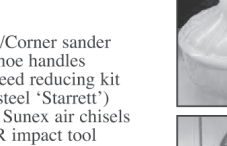
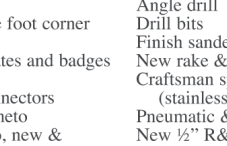
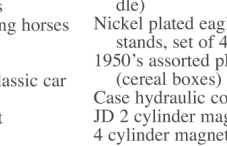
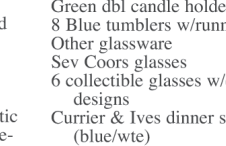
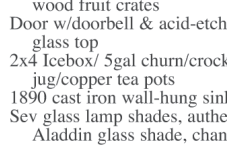
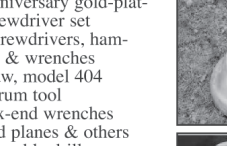
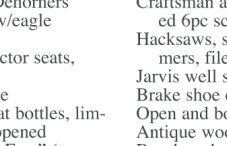
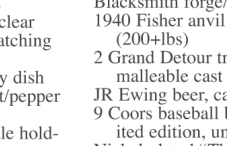
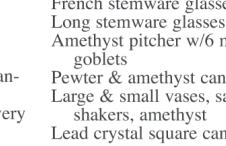
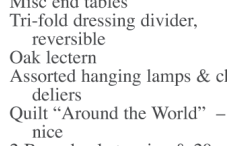
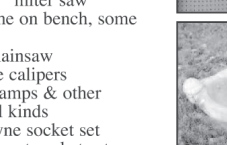
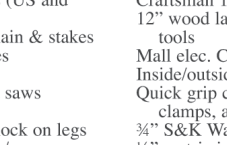
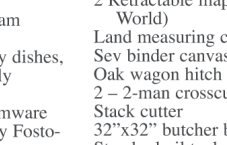
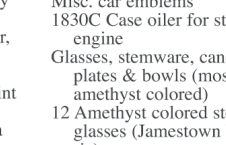
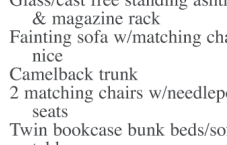
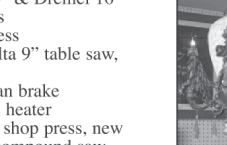
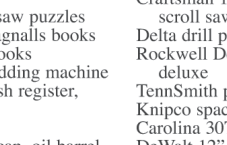
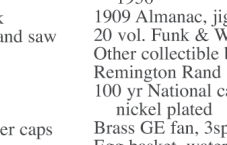
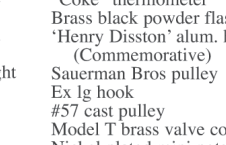
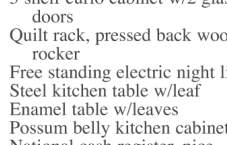
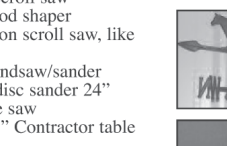
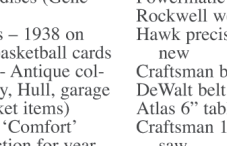
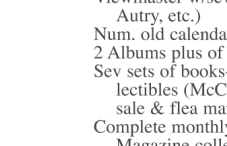
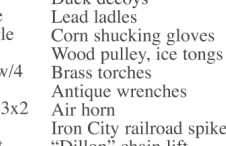
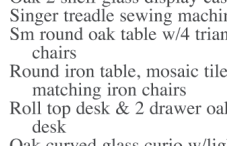
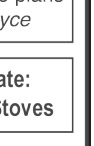
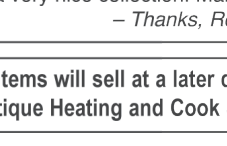
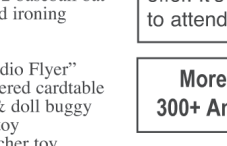
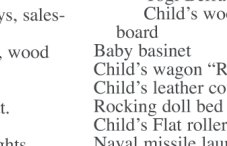
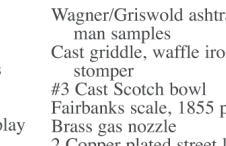
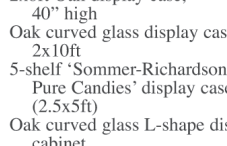
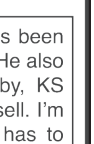
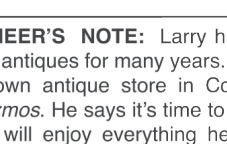
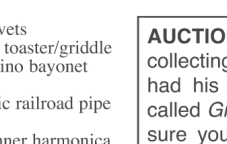
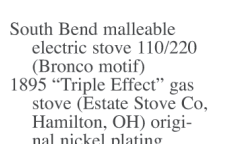
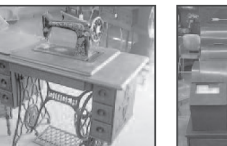
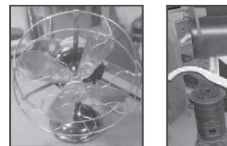
Sunday, Feb. 23, 2014

10 a.m. - Lunch will be served

Sale Site: Atwood Fairgrounds – 4-H Building, Atwood, KS

AUCTION

Seller: Larry Havel





Family is our business!



CALL US FOR A FREE CONSULTATION!
(785) 462-2023
Colby, KS

Building pictured is not priced in ad. Crew travel required over 50 miles. Local building code modifications extra.
Price subject to change without notice.

FEATUREING:  **FABRAL**

Building Structures, Building Friendships

Cleary has been building solid relationships for over 35 years for good reason — we treat our Clients like family.

BUILDING SPECIALS!

30'x48'x12' • \$13,615
42'x80'x14' • \$25,065
60'x112'x16' • \$49,965

800-373-5550 | ClearyBuilding.com

VANS! VANS! VANS!

Call or stop by to check out the van inventory at Finley Motors!



2013 Dodge Grand Caravan Sport
#X7526: Silver, Cloth, 13,608 miles, **\$21,800**




2013 Chrysler Town & Country Sport
#X7527: Gold, Leather, 18,523 miles, **\$23,800**




2003 Chevrolet Venture
#X7441: White, Cloth, 101,890 miles, **\$5,500**



2007 Chevrolet Uplander LT
#X7499A: Steel Blue, Cloth, 84,774 miles, **\$8,700**



2009 Dodge Grand Caravan Sport
#X7511C: White, Cloth, 105,762 miles, **\$7,900**



2003 Chrysler Town & Country
#X7469A: Silver, Cloth, 90,446 miles, **\$4,900**


NO PHOTO AVAILABLE

FINLEY MOTORS, INC.

1520 Highway 27, Goodland, KS 67735 • Toll free: (800) 525-3701 • "Your volume & variety dealer!"

WWW.FINLEYMOTORSINC.COM





NORTHWEST TECH

WWW.NWKTC.EDU

ENDOWMENT FUNDRAISER

MARCH 1ST

GOODLAND ELKS LODGE

\$25.00

EVENT TICKETS

\$25.00

- DOORS OPEN @ 4:30
- OPEN BAR 4:30-5:30
- DINNER @ 5:30
- LIVE AUCTION @ 6:30
- ANNIE-UP @ 9:00

\$1000+

VIP TABLES

- SIX OF THE BEST SEATS
- PERSONAL SERVER
- FIRST COME, FIRST SERVED

TO PURCHASE TICKETS • 785.890.1529 • SHAUDEL.BAIN@NWKTC.EDU

— Since 1969 —

RAMBAT AUCTION

785-426-2049 • Cell: 785-332-0452 • Bird City, KS

Royce Rambat, KS State Champion Auctioneer
Jace Rambat, Auctioneer
Kiley Roundtree, Auctioneer
Bob Haag, Auctioneer

If you're planning a sale, give us a call. We'd be glad to work for you.
<http://www.midwestauction.com>
rambatauction@hotmail.com

2 Brass buckets, nice & 20+ wood fruit crates
Door w/doorbell & acid-etched glass top
2x4 Icebox/ 5gal churn/crock jug/copper tea pots
1890 cast iron wall-hung sink
Sev glass lamp shades, authentic Aladdin glass shade, chandeliers
Numerous oil lamps: Aladdin – patterns Beehive, Lincoln drape, Washington drape, Corinthian, Eldorado Corp, Greek Key oil lamps; milk-green lamp; Coleman gas lantern shades
Elec brass lamp w/Aladdin shade
Coors pool table light
Pontiac Service sign w/light
Hove scale, 1886
Lots of old tins, tobacco, oil, bread and canisters
Bottle capper, cherry pitters, meat grinders
Extra large cast iron funnel
Wagner cast skillet, #6, #8, #10

Go to:
www.midwestauction.com
for more photos

Wagner/Criswold ashtrays, salesman samples
Cast griddle, waffle iron, wood stomper
#3 Cast Scotch bowl
Fairbanks scale, 1855 pat.
Brass gas nozzle
2 Copper plated street lights
Duck decoys
Lead ladles
Corn shucking gloves
Wood pulley, ice tongs
Brass torches
Antique wrenches
Air horn
Iron City railroad spike
"Dillon" chain lift
"Coke" thermometer
Brass black powder flask
"Henry Disston" alum. hand saw (Commemorative)
Sauerman Bros pulley
Ex lg hook
#57 cast pulley
Model T brass valve cover caps
Nickel plated mini pots
Misc. car emblems
1830C Case oiler for steam engine
Glasses, stemware, candy dishes, plates & bowls (mostly amethyst colored)
12 Amethyst colored stemware glasses (Jamestown by Fostoria)
French stemware glasses
Long stemware glasses, clear
Amethyst pitcher w/6 matching goblets
Pewter & amethyst candy dish
Large & small vases, salt/pepper shakers, amethyst
Lead crystal square candle holders
Green dbl candle holders
8 Blue tumblers w/running horses
Other glassware
Sev Coors glasses
6 collectible glasses w/classic car designs
Currier & Ives dinner set (blue/wte)
Sev sets of Pyrex nesting bowls
Green Block Optic plates
Pharmacist Scale & Juicer
1878 candy jar w/lid
5c Duplex flour sifter
Dazey ice crusher
Vaseline jar & other collectibles
Pewter pitcher/silver teapot
Fancy silver cruet set
Brass bowl
Silver sugar bowl w/Colorado spoon collection
Soapstone jewelry box
Extendable beveled mirror
Cast iron weather vanes- cow & pheasant
Cast iron horse bank
Cast iron Ship doorstep

Cast iron trivets
Elec upright toaster/griddle
1909 Argentino bayonet modelo
Union Pacific railroad pipe wrenches
1871 M Hohner harmonica
Yogi Berra J2 baseball bat
Child's wood ironing board
Baby basinet
Child's wagon "Radio Flyer"
Child's leather covered cardtable
Rocking doll bed & doll buggy
Child's Flat roller toy
Naval missile launcher toy
Viewmaster w/sev discs (Gene Autry, etc.)
Num. old calendars – 1938 on
2 Albums plus of basketball cards
Sev sets of books- - Antique collectibles (McCoy, Hull, garage sale & flea market items)
Complete monthly "Comfort" Magazine collection for year 1936
1909 Almanac, jigsaw puzzles
20 vol. Funk & Wagnalls books
Other collectible books
Remington Rand adding machine
100 yr National cash register, nickel plated
Brass GE fan, 3sp
Egg basket, water can, oil barrel
2 Retractable maps (US and World)
Land measuring chain & stakes
Sev binder canvases
Oak wagon hitch
2 – 2-man crosscut saws
Stack cutter
32"x32" butcher block on legs
Standard oil tank w/pump
Blacksmith forge/Dehomers
1940 Fisher anvil w/eagle (200+lbs)
2 Grand Detour tractor seats, malleable cast
JR Ewing beer, case
9 Coors baseball bat bottles, limited edition, unopened
Nickel plated "The Free" (treasure)
Nickel plated eagle foot corner stands, set of 4
1950's assorted plates and badges (cereal boxes)
Case hydraulic connectors
JD 2 cylinder magneto
4 cylinder magneto, new & rebuilt
2 Maytag motors, 1 lung, have compression
Fender mount, amber fog light
Magnahelic differential pressure gauge
Jensen weight
Lee roller, 22-250
Sev Indian figurines, Indian maiden
"Santa Maria" sailing ship replica, rosewood
8x12 & 5x7 area rugs, nice
Ship print by Andres Orpinas
Huffy 10sp bicycle
Electric water fountain
Sev steel lawn chairs
Mailbox on sod cutter, unique
3ft Chrome plated exhaust pipe
Milwaukee contractor's radio
Roof couplers
Road hazard kit, air compressors
Floor heater, round
1100 Sentry safe
Kitchenpride steel storage cabinet
3 Redwood shop benches 1-2x6ft & 2-2x8ft
Duplex tool chest on wheels
Work bench
Craftsman 10" radial arm saw
10" Craftsman table saw

AUCTIONEER'S NOTE: Larry has been collecting antiques for many years. He also had his own antique store in Colby, KS called *Gizmos*. He says it's time to sell. I'm sure you will enjoy everything he has to offer. It's a very nice collection. Make plans to attend.
— Thanks, Royce

More items will sell at a later date:
300+ Antique Heating and Cook Stoves

Powermatic scroll saw
Rockwell wood shaper
Hawk precision scroll saw, like new
Craftsman bandsaw/sander
DeWalt belt disc sander 24"
Atlas 6" table saw
Craftsman 10" Contractor table saw
Craftsman 16" & Dremel 16" scroll saws
Delta drill press
Rockwell Delta 9" table saw, deluxe
TennSmith pan brake
Knipco space heater
Carolina 30T shop press, new
DeWalt 12" compound saw
Craftsman 10" miter saw
12" wood lathe on bench, some tools
Mall elec. Chainsaw
Inside/outside calipers
Quick grip clamps & other clamps, all kinds
¾" S&K Wayne socket set
½" metric impact socket set
Craftsman anniversary gold-plated 6pc screwdriver set
Hacksaws, screwdrivers, hammers, files & wrenches
Jarvis well saw, model 404
Brake shoe drum tool
Open and box-end wrenches
Antique wood planes & others
Bosch rechargeable drill
Angle drill
Drill bits
Finish sander/Corner sander
New rake & hoe handles
Craftsman speed reducing kit (stainless steel "Starrett")
Pneumatic & Sunex air chisels
New ½" R&R impact tool
Engraving tool
B&D bit set
Ratchets, sockets, allen wrenches, crescents
½" Montgomery Ward drill
Tool King ½" drill
15hp Leeson 3phase electric motor, new
Honda 4hp gas lawn edger
Num boxes of wood plugs, castor wheels, magnet cabinet latches, hinges, door pulls, gate hinges, window clamps, corner clamps, skill saw blades, door locks, shelf brackets,
Several gallon cans of washers, nuts & screws
Lg assortment of nails, all sizes
Num. solid brass cabinet pulls
Sev new brake light assemblies
Sev small toolboxes
Numerous hitch pins
Hitch receivers
Rotor roter sewer tape

Many more items too numerous to mention

TERMS: Cash or Approved Check. Not responsible for accidents or articles after sold. All announcements day of sale shall take precedence over printed material.