

Watch those unwanted items disappear! THE OBERLIN HERALD

Your ad goes on the Internet, too. **Call Pat: 785-475-2206**

HeraldClassifieds

(785) 475-2206 — FAX (785) 475-2800

Classified rate is \$9.45 for 15 words and 55 cents per word thereafter. Classified display: \$9.20 per col. inch, per week. Payment with order will save billing charge. Deadline is noon Monday each week.

For Sale

MUSTSELLDUETOILLNESS-trailer #45 at Medicine Creek Lake, Cambridge, NE. Call 785-890-7314 evenings. 12*

AMERICAN PROFILE Hometown Recipes for the Holidays on sale at The Oberlin Herald. 283 pages of recipes collected from all over the United States. 1f

Notices

DO YOU HAVE A SUBSCRIPTION? When moving, please turn in a change of address to the Herald office. 785-475-2206 3 6 t f *

YOU'LL FIND IT online at www.NWKansasOnline.com. 11 t f *

Real Estate

OWN A NEW HOME! Zero or little down, your land or family land. Possible tax credit of up to \$8,000 available. Call Clayton Homes for details (800) 621-6539 or (785) 625-6539. 11 t f *

FOR SALE NEW 3 bedroom, 2 bath home delivered to your lot, \$29,995! Limited time only! Clayton Homes 800-621-6539 or 785-625-6539. 10 t f n

HOUSES FOR SALE: Johnson Realty, Inc. has homes in all price ranges for sale in Oberlin and surrounding areas. Call Roberta Johnson, Broker, for more information or a complete list. Call Lynn if you are interested in buying or selling land. Office-Home 785-475-2785 or Mobile 785-475-7156. johnsonrealty1@yahoo.com or www.johnson-real-estate.com 08 t f

FOR SALE - 2 year old Black Polled Gelbvieh and Balancer Bulls. We don't sell yearlings. Kevin Holle, 785-322-5533. Orrin Holle, 785-322-5676. 07-14

HEREFORD BULLS make Angus cows better! Registered commercial bulls for sale. Call 785-678-2616. 05-23

REAL ESTATE AGENCIES online at www.NWKansasOnline.com. 11 t f * ine.com. 11 t f *

RANCHES online at www.

NWKansasOnline.com. 11 t f *

Services

ED'S LAWN MOWING, 785-475-2958. 12-13

3B PLUMBING AND HEATING now offering back-hoe service, along with remodeling/concrete work, roofing, etc. 785-470-1118. 12-15*

TERRACE REBUILDS, 19' per foot. 785-871-0711. 39 t f n

VANOTTERLOO Tree and shrub. 785-475-4100 or 785-693-4414. 35 t f n

HICKERT AND SCOTT ENTERPRISES LLC. windmill repair and service. Tree trimming and removal. 785-475-2729. 01-26*

SERVICES online at www.NWKansasOnline.com. 11 t f *

BECKMAN CARPET CLEANING Truck-mounted steam cleaning. Carpets, upholstery, autos. Call 785-626-4548. 23 t f *

Vehicles

87 BUICK ELECTRA, 166,000 Miles. Runs fine. 27 MPG, \$750. Call evenings 475-2592. 12-13

AUTO DEALERS online at www.NWKansasOnline.com. 11 t f *

Card of Thanks

A sincere thank you to Mr Haag, the office and teaching staff at DCHS for your prompt care and quick action when Kortnie and we needed you most. Also a big thank you to the EMS crew and medical staff at Decatur Health Systems for all your care. Special appreciation to Robert and Robyn Rouse and family for letting Keatratag along with you and taking care of her this past weekend. Oberlin always amazed me. From when I was young with my own injuries and happenings to raising my own family in your caring arms, there is always an outpouring of care, concern, love, cards, flowers and a multitude of praying hands to carry a person or family through. God Bless You All, Kendal, Angela Fisher and the girls*

1,800 Kansans qualify for additional savings on Medicare.

Do you or your loved ones? Find out by contacting the Area Agency on Aging nearest you, toll-free, at

1-866-457-2364



310 ACRES DECATUR CO, KS JUST LISTED

•CROPLAND • GRASS • LIVESTOCK FEEDING FACILITY

This property located 7 mi N & 1 mi W of Oberlin will be sold in one entity.

•136.6 ac cropland •168.7 ac grass

TRACT 1: NE/4 of 26-1-29 includes 24'x36' pole shed, 12'x42' livestock shelter, open bunk feeding area, submersible well, good water, excellent building site, great windbreaks and good hunting potential.

TRACT 2: NE/4 of 34-1-29 includes a windmill and good water.

•There are no growing crops •Immediate possession

Call Steve Hazlett for a tour or more information!

FARM & RANCH REALTY, INC.

Steve Hazlett, Listing Agent (785-443-3110)

1420 W. 4th • Colby, KS 67701

Toll Free - 1-800-247-7863

Donald L. Hazlett - Broker

www.farmandranchrealty.com

"When you list with Farm & Ranch, it's as good as SOLD!"

Help Wanted

SOUTHWIND STEAKHOUSE, Selden, is under new management, needing evening cook. 12-14*

Livestock For Sale

EXCELLENT GELBVIEH and Balancer bulls. 785-475-2808 or 785-470-7461. 12-15*

CHAROLAIS BULLS, great performance and disposition. BBB Charolais, Oakley, KS, 785-672-4145. 08-23

FOR SALE - 2 year old Black Polled Gelbvieh and Balancer Bulls. We don't sell yearlings. Kevin Holle, 785-322-5533. Orrin Holle, 785-322-5676. 07-14

HEREFORD BULLS make Angus cows better! Registered commercial bulls for sale. Call 785-678-2616. 05-23

Rawlins County, KS

(800 +/- Acres)

Land Auction

Sat., Apr. 10, 2010 - 2:00 p.m.

Sellers: Denis and Wilma Tongish Irrevocable Trust, Joe Tongish Trustee

SALE LOCATION: Herndon VFW, Herndon, KS.

POSSESSION: Day of closing on open ground, after wheat harvest 2010 on 165.63 planted acres on Tract 1. Buyer pays 1/3 fertilizer and receives 1/3 of planted wheat.

LEGAL DESCRIPTION:

TRACT 1: The Southwest Quarter (SW1/4) of Section Twenty-two (22), Township Two (2) South, Range Thirty-one (31) and the West One-half (W1/2) of Section Twenty-seven (27), Township Two (2) South, Range Thirty-one (31), all West of the 6th P.M., Rawlins County, Kansas.

TRACT 2: The Northwest Quarter (NW1/4) of Section Twenty-nine (29) and the Northeast Quarter (NE1/4) of Section Thirty (30), all in Township Two (2) South, Range Thirty-one (31), West of the 6th P.M., Rawlins County, Kansas.

MINERALS: Seller's interest going to Buyer.

CROP INSURANCE: Buyer pays 1/3.

TERMS: 10% down day of sale, balance at closing, on or before May 10, 2010, with certified funds.

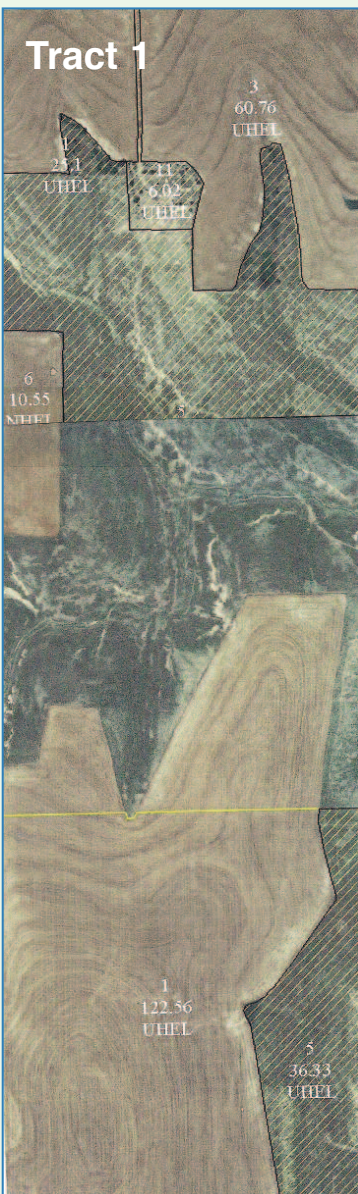
TAXES: Tract 1 - \$591.62

Tract 2 - \$229.90

Seller will pay taxes for 2009 and prior years and Buyer will pay taxes for 2010 and subsequent years.

FSA INFORMATION:

TRACT 1: Selling as 480 acres. Cropland - 262.04 acres; Grassland - 217.96 (+/-).

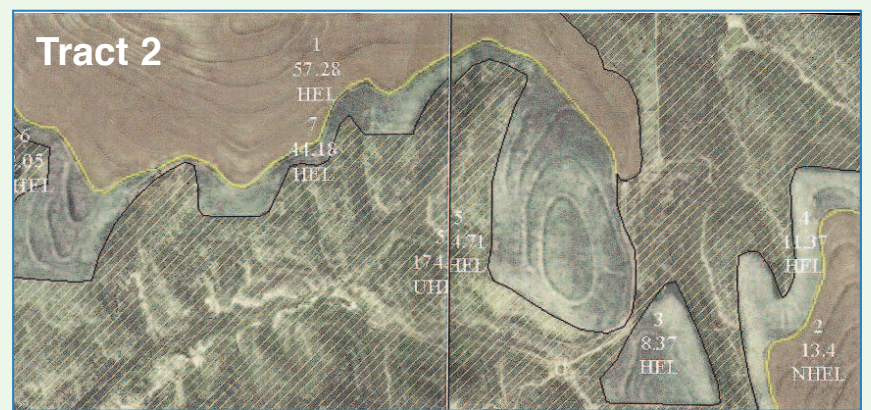
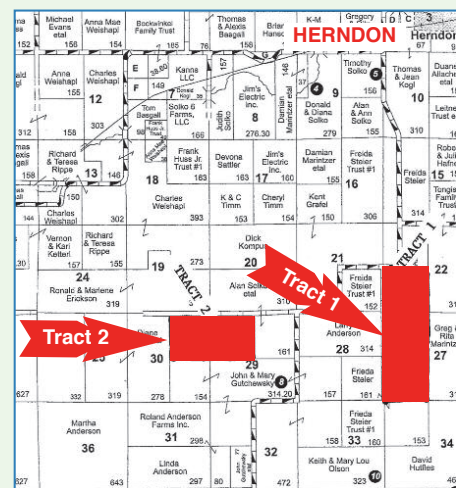


	Bases	Yields
Wheat	108.4	31
Grain Sorghum	87.3	48
Wheat	58.2	31
Grain Sorghum	44.1	48

FSA measurements may not be same as deeded acres. All information is from reliable sources.

AGENCY: Johnson Realty, Inc. and its agents are representing the Seller and not agents for the Buyer. Announcements made day of sale take precedence over printed material and previously made oral statements.

AUCTIONEER'S NOTE: Tract 1 has been very well-maintained, with very good crop land and grassland. Tract 2 is a combination of very good crop land and pasture. There are 55.6 acres of expired CRP that could be broke out or used as a hunter's dream.



CHECK OUT OUR WEB SITE AT: www.johnson-real-estate.com

Johnson Realty, Inc.

122 South Penn, Oberlin, KS 67749 • Roberta Johnson, Broker • Lynn A. Johnson, Associate Broker/Auctioneer

Call Lynn A. Johnson for sale bill or information: 785-475-2785 - Mobile: 785-475-8514

Joe D. Green, Herndon, KS, Salesperson/Auctioneer • Roger Emigh, Danbury, NE, Salesperson/Auctioneer • Dianne Bremer, Oberlin, KS, Salesperson • David Juennemann, Selden, KS, Salesperson • Tom Beattie, McCook, NE, Salesperson • Michael Wilson, Kinsley, KS, Salesperson

Are you the picture of health?

"You might look and feel fine, but you need to get the inside story."

Colorectal cancer is one cancer you can prevent."

Katie Couric, Co-Founder EIF's National Colorectal Cancer Research Alliance

If you're over 50, get screened. 1-800-CDC-INFO (1-800-232-4636) www.cdc.gov/screenforlife



www.cancerkansas.org • 1-800-4-CANCER (1-800-422-6237)

AG EQUIPMENT NO RESERVE INTERNET AUCTION

Bidding starts to close Wed., March 31 at 10 A.M.



'02 Gleaner R-62 combine



'07 Agco 5456A round baler

'07 Hesston 5556A, '07 Agco 5456A, '05 Hesston 956A, '05 Hesston 4910, '05 Case IH WDX1202, '02 Gleaner R-62, '02 Hesston 4790, '98 John Deere 1750 MaxEmergePlus, '98 DMI Tigermate II, '95 John Deere 8770 4WD, '93 Ag-Chem RoGator 664, '93 Ford 8830 MFWD, Krause 2408 double offset disc, Sunflower G4 four section tandem disc, and more

Detailed photographs, descriptions, seller contact information & many other assets at purplewave.com | 10% buyer's premium applies

866-608-9283 BID NOW! purplewave.com

