

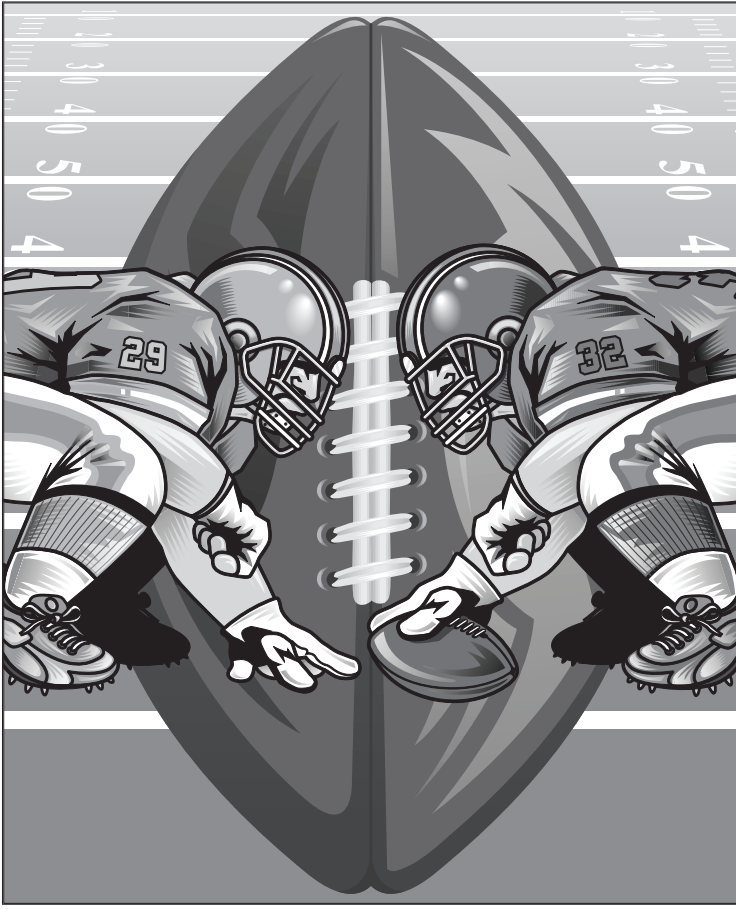
THE OBERLIN HERALD

PIGSKIN PICK-EM

Football Contest

\$30 In scrip
awarded every week!

**Grand Prize:
\$50 scrip plus a trophy**



1st Prize \$15, 2nd Prize \$10, 3rd Prize \$5
PRIZES MUST BE PICKED UP AT
THE OBERLIN HERALD OFFICE
WITHIN 3 WEEKS

Read these contest rules carefully before making your entry.

Official Contest Rules:

- 1) Anyone is eligible to enter except employees of this newspaper. One entry per person.
- 2) Locate the football games listed in each sponsor's ad. Decide the winner of each. Then write each winner of the official entry blank beside the name of the sponsor in whose ad the game appears. WINNERS MUST BE MATCHED WITH THE PROPER SPONSOR'S NAME IN ORDER TO COUNT. (Don't pick ties because the contest is based on winning teams)
- 3) Write in the score of the tiebreaker game listed on the entry blank. It will be used to determine the winner only when several contestants pick the same number of wins.
- 4) Clip out the entry blank shown on this page or pick up identical ones in the stores of any of the sponsoring firms. NO ENTRIES WILL BE ACCEPTED UNLESS ON OFFICIAL ENTRY BLANKS. No copies.
- 5) Bring entries to *The Oberlin Herald* office before 5 p.m. each Friday or mail to The Oberlin Herald, 170 S. Penn, in which case they must be postmarked by Friday.
- 6) Winners will be announced in the following week's *Herald*.
- 7) All decisions are final. Prizes of \$15, \$10, and \$5 scrip money will be awarded to the three persons picking the most winners each week.
- 8) The Grand Prize is \$50 in scrip money plus a trophy. It will be awarded at the end of the contest to the person picking the most winners.

2008 OFFICIAL "PIGSKIN PICK-EM ENTRY BLANK"

For Week Ending _____

Ward Drug Store Winner _____

Raye's Grocery..... Winner _____

LandMark Inn..... Winner _____

Farm Bureau Insurance Companies Winner _____

Fredrickson Insurance Agency..... Winner _____

Farm Credit of Western Kansas Winner _____

Home Planning Center Winner _____

Wagner Chevrolet. Winner _____

TIEBREAKER: _____ K-State vs Louisiana-Lafayette _____

Name: _____

Address: _____

City: _____ State: _____ Zip Code: _____ Phone: _____

THE OBERLIN HERALD

We make insurance **simple.** SM

1 premium for simplified bill paying policy for your home, vehicles and other possessions deductible for all covered possessions damaged in a single occurrence company with a reputation of honesty and fair-dealing agent to handle it all for you.

David L. Browne III
122 E. Commercial
Oberlin, Ks.
(785) 475-2238

Norton vs Osborne

FARM BUREAU FINANCIAL SERVICES
Insurance • Investments
www.fbfs.com

Auto Home Life Business College Retirement

Farm Bureau Member's Choice policy is issued by Farm Bureau Mutual Insurance Company*West Des Moines, IA. Farm Bureau Life Insurance Company*West Des Moines, IA *Companies of Farm Bureau Financial Services

McCook vs Hastings High School

WAGNER
CHEVROLET - BUICK - PONTIAC - CADILLAC
McCook, Nebraska

201 East B Street 345-3500 800-456-5046

Colby vs Plainville



- ◆ Your best renewable resource could be at Farm Credit
- ◆ See A.J. Hurst on Mondays at the Farm Bureau Insurance office



TOLL FREE
1-800-957-6048
1055 S. Range Colby, KS

WARD DRUG STORE

The Family Health Center

Ft. Hays State vs Truman

Kurt Vollertsen
Pharmacist

142 S. Penn
P.O. Box 297
Oberlin, KS 67749

Voice 785-475-2285
Fax 785-475-2470
24-Hr. 785-475-3947



Oberlin vs Rawlins County

Raye's Grocery Inc.

"Home Owned — Home Operated"

Kirk Brown
Owner/Operator
P.O. Box 9
119 W. Commercial

785-475-2952

The Teller Room
A Unique Restaurant at the Historic Bank of Oberlin

ITALIAN BUFFET
Tuesday, Sept. 30 ~ 6-8 p.m.
Garden Items
40% Off

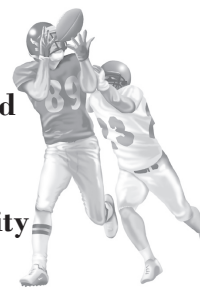
LANDMARK INN

at the Historic Bank of Oberlin
Lunch: Mon-Sat. 11:30 a.m.-1:30 p.m.
Dinner: Thurs.-Sat. 6:30-8:30 p.m.

1-888-639-0003
189 S. Penn Ave., Oberlin, Kan.

Golden Plains vs Tri Plains/Brewster
www.landmarkinn.com

Goodland vs Trego Community



- Martin Senour Paint
- Wallpaper
- Seamless Gutters

Home Planning Center

180 South Penn, Oberlin
785-475-2325



Nebraska vs Virginia Tech

Fredrickson Insurance Agency

Tammy Fredrickson,
Owner/Agent

We Sell Insurance. But Specialize in Service!

P.O. Box 168
183 S. Penn Ave.
Oberlin, KS 67749
785-475-3883
800-321-5063
Fax: 785-475-2339