

Doniphan County

Visitors enjoy view on U.S.36

People won't see a traffic jam or closed expressways in Doniphan County — just wide open freeways. U.S. 36 the main east-west corridor through the county. In Kansas, it continues from Missouri and extends to the very west end, then into Colorado.

Doniphan is located in the northeastern-most county in Kansas. Rugged landscapes, spectacular views and a rich history are included in the county.

Troy is the county seat and is located just off U.S. 36. Other county towns along or near U.S. 36 are Elwood, on the Missouri River, and Wathena.

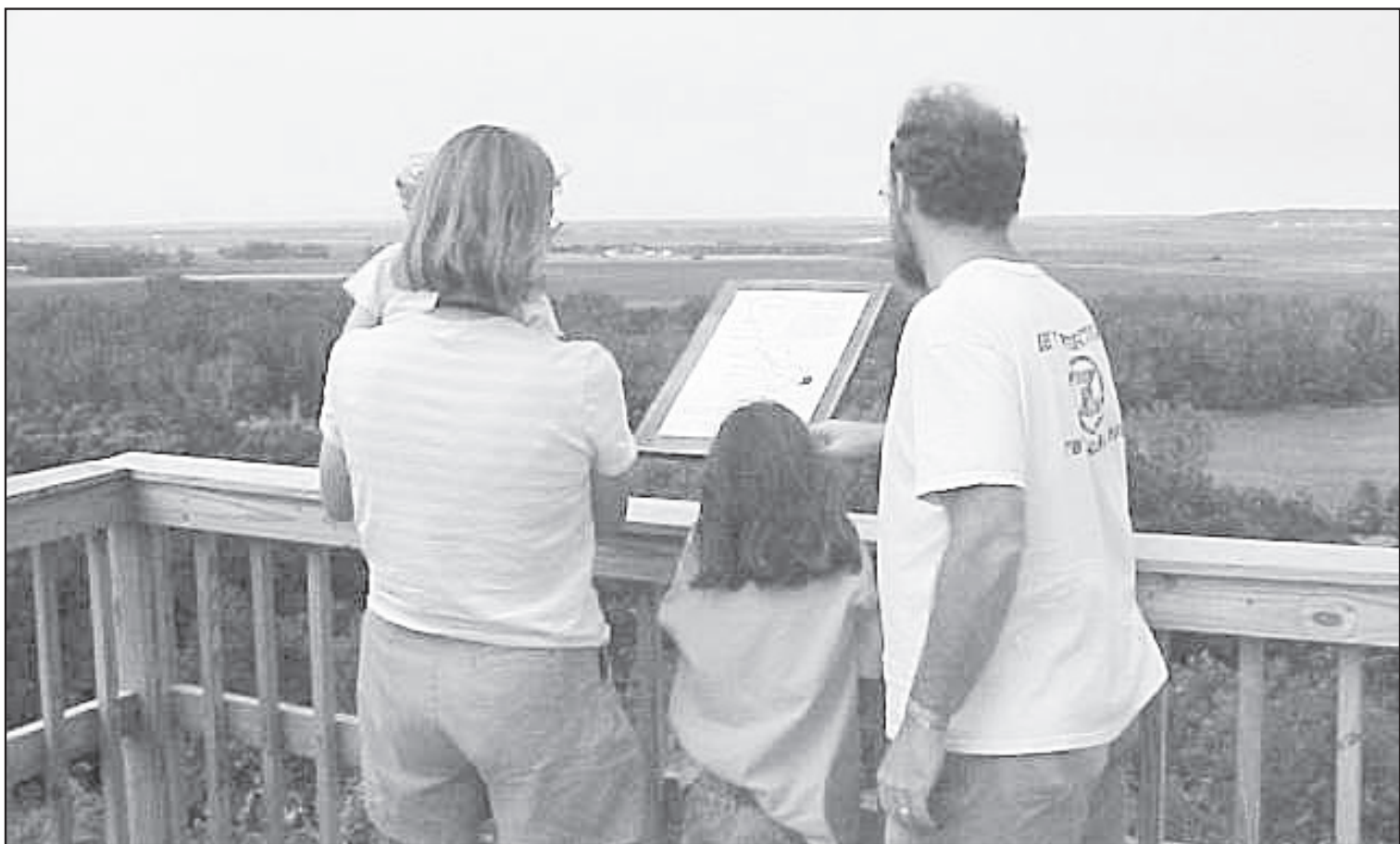
To the north is Highland Community College and White Cloud. From a lookout, people can stand and look out over the Missouri River, seeing four different states.

In Highland is Irvin Hall, the oldest educational building in Kansas, dating to 1858, on the campus of Highland Community College.

Three miles outside Highland is the Iowa, Sac and Fox Mission State Historic Site, established in 1837 to serve Indians being relocated to Kansas from their ancestral homes.

Highland Community College was established 150 years ago. The sesquicentennial activities started in February with a noon luncheon buffet. Some of the other activities will include:

- July 6 - An old-time Independence Day celebration. Sunday church service on the Irvin Hall lawn, yard games, square



Checking out the lookout tower is a popular visitors' site.

dancing and a potluck.

- Oct. 3 - Concert by renowned guitarist Tommy Emmanuel, 7:30 p.m. Culbertson Auditorium.

- Nov. 15 - Veteran's Day Ball featuring the Moonlight Serenade Orchestra.

Special sites

On the courthouse lawn in Troy is a 35-foot Indian, carved by sculptor Peter Toth from a burr oak log.

The Wilbur Chapman monument on Main Street in White Cloud was erected by the American Leprosy Society.

Doniphan County is known as the Barn Capitol of Kansas with more than 15 historical barns located throughout. Eight barns in particular are featured in the "Historic Barn Tour" brochure. These barns were nominated to the National Register of Historic Places for their architectural integrity.

The K-7 Scenic Byway in Doniphan County starts at the Atchison County line heading north, passing along the

Missouri River and bluffs until it reaches the Nebraska border.

U.S. 36 Garage Sale

On Sept. 19 through 21, the mile-after-mile of garage sales and yard sales will be held all along the 400 miles of U.S. 36. This is the third year for the event.

July Fourth celebration

Independence Day is big in Doniphan County.

Highland has activities through the day and fireworks in the evening.

The Troy Lions Club sponsors a Fourth of July celebration with activities during the day and fireworks in the evening.

The annual Chief White Cloud Rodeo will be held in July at the Iowa Tribal Complex seven miles northwest of White Cloud, with fireworks after the rodeo.

The July 4 Independence celebration in Wathena will be in Community Park, (785) 989-4730.

Museums

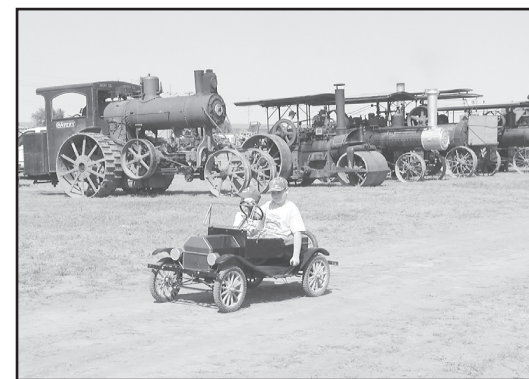
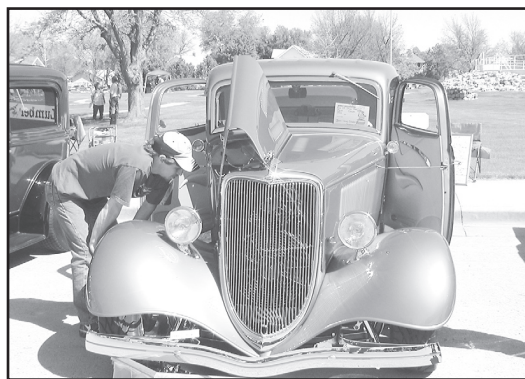
There are three museums within the boundaries of Doniphan County. They include the Native American Heritage Museum at Highland, (785) 442-3304; the Ma Hush Kah Museum in White Cloud; and the Yost Art Gallery at Highland Community College.

Pony Express

The Pony Express originated in St. Joseph, Mo., just across the river from Doniphan County. Riders will strike out from St. Jo in June this year on a 10-day re-enactment of the original historic mail run.

The riders cut cross country through Doniphan County, going west one year and east the next to complete their 1,966 mile journey. This year's ride originates in St. Joseph, Mo., on June 11 and arrives in Sacramento, Calif., on June 21. Information is available at www.xphomestation.com.

★ Experience Cheyenne County For a Day or for a Lifetime!



Cheyenne County



DEVELOPMENT
CORPORATION

- ★ Strategic Tri-State Location
- ★ Affordable Land, Homes & Business Locations
- ★ Active Family or Retirement Lifestyle

P.O. Box 255, 107 W. Washington, St. Francis, KS 67756
785-332-3508 e-mail: cheycodevelopcorp@sbcglobal.net