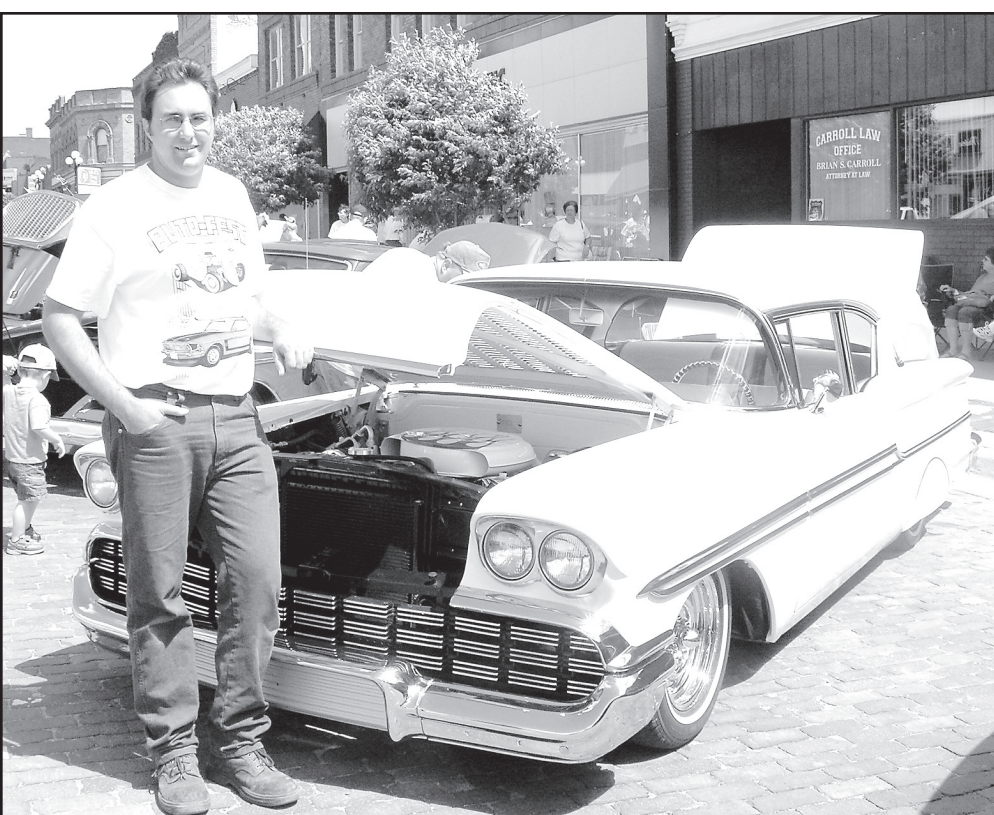




Paul Thoma, Overland Park, checks his barbecue ribs during the Big Blue Barbecue Championship last year in Marysville. At the barbecue, prizes were given to winners in various categories, and the public could buy tickets to go to the contestants' booths for samples. This year's championship will be June 6 and 7. Photos by JoAnn Shum



Brandon Pillard, Marysville, received the best of show award for his 1958 Chevrolet Biscayne at the 2007 Marysville Auto Fest. The show had one of the largest number of participants ever. The 2008 Auto Fest is June 7.

## BBQ, cars draw crowds

Marysville's second annual Bruna Implement Case IH Big Blue Barbecue will be June 6 and 7, during the annual Marysville Auto Fest car show.

The first barbecue had 22 contestants and a crowd of about 700. The event is held on the old Union Pacific railbed at Seventh and Broadway and is sponsored by Marysville Main Street. Categories are chicken, pork ribs, pork shoulder, brisket and people's choice.

Overall prizes include \$1,000 for first, \$750 for second, \$500 for third. Category winners took home \$200, \$150 and \$100.

For information call the Main Street office at 785-629-8019.

The Auto Fest is in its 18th year, and much of the downtown is its home. Cars and pickups line both sides of Broadway for four blocks and some of the side streets, and a motorcycle competition was added last year.

The celebration starts the evening before the event with Friday Night Cruisin' and Poker Run. Enthusiastic barbecuers start their fires on Friday evening and tend their entries through the night. Visitors are advised to follow their noses to the event.

# Marshall



Abundant rainfall in spring 2007 meant ponds and creeks were recharged, and it led to a beautiful site at Naomi Pike Fall at Alcove Spring. The historic stopping-off place for Oregon Trail emigrants in the 1800s is between Blue Rapids and Marysville and is open for visitors. Photo by Duane Iles

## Visitors can stop, enjoy beauty of nature spring

Alcove Spring was placed on the National Register in 1972. The site was the object of renewed interest stirred by the sesquicentennial observance of the Oregon Trail in 1993 and has since become a park.

Special features are Naomi Pike Falls

just to the north of the spring, rock carvings of names and dates by members of the 1846 Donner-Reed Party and the monument to Sarah Keyes, a member of the Donner-Reed party who died during the encampment east of the Big Blue River.

## FISHER ROCK INC.

Shane & Joan Hartner



*Designs to suit every interest, age and lifestyle.*

**Check out our gift shop and etched glass!**

FASTLINE TRAILER DEALER • ROCKY ACRE BUILDING & CABIN DEALER

1632 Pony Express Highway • Home, KS 66438

Hours: M-F, 8 am - 5:30 pm • Sat., 8 am - 5 pm

785-799-3456 • FAX 785-799-3448 • [www.rocksigns.com](http://www.rocksigns.com)

## Heritage Inn Express

1155 Pony Express Hwy., Marysville, KS

1-800-800-8000 • 785-562-5588

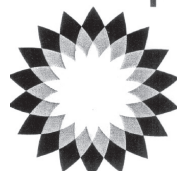


- Game cleaning station
- Continental Breakfast
- Wireless Internet
- Children 17 and under stay free with adult
- Restaurants and gas stations close by
- FREE Coffee available
- 41 rooms available
- New King and Queen beds
- Nonsmoking and smoking rooms

- Cable TV
- New 25" TV's
- Large vehicle parking for RV's and trailers
- Meeting room available accommodates up to 35
- Whirlpool Rooms available with microwave and fridge
- Free local calls
- All rooms have coffee makers and hairdryers.

WELCOME TO MARYSVILLE

bp



Open 5 am-11 pm, 7 Days a Week

### A Convenience Store and MORE!

Bagged Ice ~ Fountain Drinks ~ Lottery Tickets ~ Pastries ~ Soups  
Sandwiches ~ Hot Coffee ~ Cappuccino ~ Soft Serve Ice Cream ~ And More

**PAY AT THE PUMP 24 hours. 7 days a week.**

Hwy. 36 & 11th Road, Marysville, KS

785-562-1463