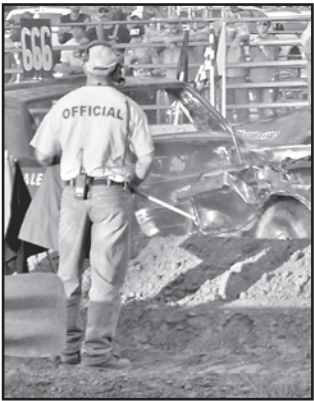


## inside today

More local news, views from your Goodland Star-News



## Demo derby held Saturday

The Kiwanis Demolition Derby was held on Saturday at the Sherman County Fairgrounds. It will be the first of many evening events held at the fair.

See Page 8

## weather

84°

10 a.m.  
Monday



Today

• Sunset, 7:54 p.m.

Wednesday

• Sunrise, 5:52 a.m.

• Sunset, 7:53 p.m.

### Midday Conditions

- Soil temperature 72 degrees
- Humidity 38 percent
- Sky sunny
- Winds wouthwest 14 mph
- Barometer 30.12 inches and steady
- Record High today 107° (1934)
- Record Low today 47° (1974)

### Last 24 Hours\*

High Sunday 92°  
Low Sunday 63°  
Precipitation none  
This month none  
Year to date 11.14  
Below Normal 2.38 inches

### The Topside Forecast

Today: Partly sunny with a 30 percent chance of showers and thunderstorms, a high near 92, winds out of the south at 10 to 15 mph and a low around 64. Wednesday: Mostly sunny with a 20 percent chance of showers and thunderstorms, a high near 91, winds out of the northwest at 5 to 10 mph and a low around 64.

### Extended Forecast

Thursday: Mostly sunny with a 20 percent chance of showers and thunderstorms, a high near 88 and a low around 64. Friday: Partly sunny with a 40 percent chance of showers, a high near 87 and a low around 64.

brought to you by:

**Hitchcock INC.**  
of GOODLAND  
VALLEY TV  
The Leader in Precision Irrigation  
328 W. Hwy. 24, Goodland  
Phone: (785) 899-5628

## markets

10 a.m.

Wheat — \$6.02 bushel  
Posted county price — \$5.94  
Corn — \$3.77 bushel  
Posted county price — \$3.52  
Milo — \$3.24 bushel  
Soybeans — \$11.47 bushel  
Posted county price — \$11.78  
Millet — no bid  
Sunflowers  
Oil current crop — \$17.20 cwt.  
Confection — no bid  
Pinto beans — \$32 (new crop)  
(Markets by Scoular Grain, Sun Opta, Frontier Ag and 21st Century Bean. These may not be closing figures.)



## Resident named as new regent

Goodland lawyer Joe Bain has been appointed to the Kansas Board of Regents.

Gov. Sam Brownback, who makes appointments to the board, made the announcement on Friday. The regents are the governing body for Kansas' higher education institutions, including the six four-year universities, the community colleges and technical colleges such as Northwest Kansas Technical College. The board also oversees financial aid, adult education and career training programs.

Bain is partner and vice president of the Cure and Bain law firm. He has a bachelor of arts degree from Fort Hays State University and graduated from the University of Kansas School of Law.

The governor also appointed Bill Feuerborn of Garnett and Zoe Forrester Newton of Sedan to the board. Regents serve four-year terms.

"Our state's colleges and universities help educate and prepare students to enter the work force, and the Regents play an important role in overseeing this process," said Governor Brownback. "Joseph, Bill, and Zoe all bring considerable talent and experience to the board, and I am pleased that they've agreed to serve the people of Kansas in this capacity."

## Legislators fighting bird listing

Two Kansas legislators have been working on bills trying to lessen the impact of a U.S. Fish and Wildlife Department decision to list the Lesser Prairie Chicken as threatened under the Endangered Species Act.

The first piece of legislation, House Resolution 4315 or the "The Endangered Species Transparency and Reasonableness Act," was passed by the U.S. House of Representatives on Tuesday. The resolution was sponsored by Kansas Rep. Tim Huelskamp. It passed on a 233 to 190 vote.

The resolution is a package of four bills. According to a release by Huelskamp's office, the bills include "a requirement for the federal government to disclose to affected states prior to listing, protecting taxpayer dollars by placing caps on attorney's fees, and requiring the U.S. Fish and Wildlife Service to track,

See BIRD, Page 5



## Fair opens with parade

The Prairie Dale 4-H Club (above) was festooned in red, white and blue as they paraded down Main Street on Saturday. The parade, which serves as a kickoff for the Northwest Kansas District Free Fair, included many entries such as horse riders (right) and students and staff from Northwest Kansas Technical College (Below). Fair Week events began Monday morning with 4-H project judging.

Photos by Pat Schiefen and Shiela Smith  
The Goodland Star-News



## Turning round



A 4-H horse show contestant turned his horse around in the small arena at the Sherman County Fairgrounds on Friday. The horse show was one of the final events held prior to Fair Week.

Photo by Pat Schiefen/The Goodland Star-News

## August is National Immunization Month

Immunization gives parents the safe, proven power to protect their children from 14 serious and sometimes deadly diseases before they turn 2 years old.

To celebrate the importance of immunizations for a healthy start and throughout our lives – and to make sure children are protected with all the vaccines they need – the Sherman County Health Department is joining with partners nationwide in recognizing August as National Immunization Awareness Month.

"Children who don't receive recommended vaccines are at risk of getting the disease or illness, and of having a severe case," said Donna Terry, Sherman County Health Department Administrator. "Every dose of every vaccine is important to protect your child and others in the community from infectious diseases. Talk to your doctor or to Cheryl Lee, RN, county health department immunization nurse to make sure your child is up to date on all the vaccines he or she needs."

Today's childhood vaccines protect against serious and potentially

life-threatening diseases, including polio, measles, whooping cough and chickenpox.

There are many important reasons to make sure your child is vaccinated:

Immunizations can protect your child from 14 serious diseases.

Vaccination is very safe and effective.

Immunizations can protect others you care about.

Immunization can save your family time and money.

Immunization protects future generations.

When children are not vaccinated, they are at increased risk and can spread diseases to others in their family and community – including babies who are too young to be fully vaccinated, and people with weakened immune systems due to cancer and other health conditions.

For questions concerning your or your child's immunizations, call (785) 890-4888 to talk to our immunization nurse or to make an appointment.





## Labyrinth opens

The First Christian Church Disciples of Christ, 711 Arcade, recently finished their labyrinth on the grounds of the church and had its opening on Sunday, July 27. The project was started when an anonymous donor gave money for the project, said Pastor Carol Eddling Jolly. The circle of concrete is 42 feet in diameter and it a seven-circuit labyrinth modeled after the labyrinth at the Chartres

Cathedral near Paris, France. Walking the labyrinth is a form of Christian prayer and meditation. The labyrinth also has a chalice with the cross of St. Andrew on it. The chalice is the symbol of the denomination. The prayer tool is surrounded by seven trees and 64 rose bushes. The labyrinth is open to the public.

Photo by Pat Schiefen/The Goodland Star-News

## Volga German talk to be in Sharon Springs

A program on the architectural heritage of the Volga Germans will be at 7 p.m. on Thursday at the Senior Center, 233 N. Main Street, Sharon Springs. Dr. Brent Mai, director of the Center for Volga German Studies at Concordia University.

This year marks the 250th anniversary of the founding of the first German colonies along the Volga River in Russia. From 1764 to 1941, a unique culture developed on the

Russian steppe, a culture that no longer exists in that area, but pieces of which are now spread around the world. It is estimated that there are now over 4 million descendants of the Volga Germans in North America today. The first immigrants arrived in Kansas in 1874 and by 1922 were in western Kansas.

The Center for Volga German Studies at Concordia University in Portland, Ore., was founded to foster study of this history.

## matters of record

The following real estate transactions have been reported by the Sherman County Register of Deeds.

Nicka Ann Edwards and Phillip Edwards convey and warrant to Alan E. Townsend and Lynda J. Townsend, the NW/4 of Sec.26, T9S, R40W.

Geri Dene Cook-Lenahan conveys and warrants to Alan E. Townsend and Lynda J. Townsend, the NW/4 of Sec.26, T9S, R40W.

Fieldworks, LLC to Brian Morales and Leah P. Morales, all of Lots 13, 14, 15, 16, 17 and 18, Block 25, Second Addition to City of Goodland.

Gary L. Smith and Debra Smith to Rex Branum, the W/2 of Lots 23 and 24, Block 2, 3rd Addition to Goodland.

Charles L. Wilkens and Alicia Wilkens convey and warrant to Michael D. Miller and Jodi L. Miller, a tract of land in NE/4 of Sec.25, T8S, R40W.

Harold T. Rhode and R. Renee

Rhode convey and warrant to Donald R. Benjamin and Stephanie A. Benjamin, Lot 4, Block 3, Rosewood Addition to City of Goodland.

U.S. Bank National Association, Owensboro, Kentucky, to Rodney D. Roeder, a tract of land in SE/4 of Sec.7, T8S, R39W, plus a tract in NE corner of SE/4 of Sec.7, T8S, R39W, plus a tract west of NE corner of SE/4 of Sec.7, T8, R39W, plus a tract west of NE/4 of SE/4 of Sec.7, T8W, R39W. Property commonly known as 1126 N. Caldwell.

The Nancy E. Laughlin Revocable Trust UTD 6/26/1997, to LouCinda Laughlin, as to an undivided 1/2, and Mary L. McKenzie, as to the other undivided 1/2, the SE/4 of Sec.1, T9S, R39W; NE/4 of Sec.33, T10S, R38W; W/2 of Sec.3, T10S, R39W; an undivided 1/3 interest in W/2 of Sec.33, T10S, R38W; an undivided 1/3 interest in SE/4 of Sec.33, T10S, R38W.

Willard W. Miller Jr. and Peggy J. Miller, to Willard W. Miller, Jr.,

Trustee of the Willard W. Miller, Jr. Trust UTA 5/3/2013 and Peggy J. Miller, Trustee of the Peggy J. Miller Trust UTA 5/3/2013, NW/4 of Sec.12, T6S, R37W.

Sandra Jo Cook Messner and David Messner convey and warrant to Alan E. Townsend and Lynda J. Townsend, the NW/4 of Sec.26, T9S, R40W.

Gary Wayne Lynn and Lorraine Mary Lynn convey and warrant to Terry L. Taylor and Shari L. Taylor, the E50' of Lots 3, 14, 15, 16 and 17, Block 5, Third Addition to City of Goodland.

Harold T. Rhode and R. Renee Rhode convey and warrant to Donald R. Benjamin and Stephanie A. Benjamin, Lot 4, Block 3, Rosewood Addition to City of Goodland.

## corrections

The Goodland Star-News will correct any mistake or misunderstanding in a news story. Please call our office at (785) 899-2338 to report errors. We want to keep an accurate record and appreciate your calling to our attention any failure to live up to this standard.

**Enjoy a night at the movies!**

**Sherman**  
1205 Main - Phone 899-5105

**Tonight 7 PM: Tammy (R)**  
Starts Friday 7 PM:  
Dawn of the Planet of the Apes 3D (PG-13)

**Classifieds work!**  
**899-2338**

**HaysMed**  
**Speciality Clinics**  
**in Goodland**

**Goodland Outreach**  
**Clinic Schedule**

**Goodland Regional**  
**Medical Center**  
**220 W. Second Street - Goodland**

**UROLOGY**  
Dr. Wallace Curry ~ Dr. McDonald

**HAYSMED**

*In partnership with Goodland Regional Medical Center*  
[www.haysmed.com](http://www.haysmed.com)

**Taste the Greatness!**  
**Fabulous new Jalapeno Double!**

Regular toasted bun with two tender, juicy beef patties, white cheddar cheese, creamy ranch sauce, crispy pickled jalapeno slices and crunchy jalapeno crisps.

**Sandwich: \$2.00 • Meal: \$3.99**

**McDonald's**

GOODLAND LOCATION ONLY • OPEN DAILY 6 A.M. TO 11 P.M.

**UNIVERSITY OF KANSAS**  
**UNITED STATES NAVAL RESERVE**  
**OFFICER TRAINING CORPS (NROTC)**

**\$100,000 SCHOLARSHIP!**

- Full tuition and other financial benefits worth up to \$100,000
- \$250-400 per month tax-free allowance
- Become an Officer in the U.S. Navy or Marine Corps

FOR MORE INFORMATION  
Contact the Program Officer:  
(785) 864-1184  
[nrotcrecruiting@ku.edu](mailto:nrotcrecruiting@ku.edu)

Or visit us online at:  
[www.ku.edu/~kunrotc](http://www.ku.edu/~kunrotc)

**Experience the QSI Advantage**  
**24X32X10 GARAGE \$11,000**

**2-9'x8' Overhead Doors • One 3' Entry Door**

\*Price does not include windows & gutters  
Price Includes DELIVERY & INSTALLATION On Your Level Site.  
Travel Charges May Apply

**QSI**  
Quality Structures, Inc. MATERIAL KITS NOW AVAILABLE

**FREE ESTIMATES**  
**AND ON-SITE CONSULTATION**  
**800-374-6988**

[www.qualitystructures.com](http://www.qualitystructures.com)

**Building a Legacy**

**MACHINE STORAGE | FARM SHOP | LIVESTOCK**

**For the Generations**

For over 100 years, Morton Buildings has provided quality products and exceptional service to our customers. Whether you are thinking about a new machine storage building, farm shop or livestock facility, with Morton you get a functional, dependable structure.

**Eight offices serving Kansas**  
**800-447-7436**  
**mortonbuildings.com**

**MORTON BUILDINGS**  
©2012 Morton Buildings, Inc. Morton Buildings is a registered trademark of Morton Buildings, Inc. All rights reserved. A listing of GC licenses available at [mortonbuildings.com/licenses.aspx](http://mortonbuildings.com/licenses.aspx). REF CODE 043.

**800-447-7436 • mortonbuildings.com**

**RICHARDSON'S HOMESTEAD REALTY AND AUCTION**  
**QUITTING BUSINESS AUCTION**  
**PJ'S HOME IMPROVEMENT CENTER**

**Saturday, August 16 @ 9:30 a.m. MDT**  
**Location: 1630 Sandy Road, Goodland, KS**

After 37 years in business the owners have sold their building and have decided to retire. This is a complete liquidation of remaining inventory including all the merchandise you find in home stores. If you are doing remodeling or repairs to your home or want to increase your business inventory, you won't want to miss this auction.

Clark 5500lb forklift, propane, windshield, 4' forks, runs good. 7' fork extensions; DeWalt 16" commercial radial arm saw on stand; Lots of new hand tools (Makita 7.2V cordless drill driver; Bostitch 2" nail gun; B&D 3/8" drill; 2 Ingersoll Rand sanders; 2-41 piece portable tool sets; 2-Thorsen 51 piece 1/4 & 3/8 socket sets, sae 7 metric; DeWalt 14.4 cordless trim saw; B&D cordless jig saw; B&D cordless multi-purpose saw; Thorson hand tools; Assortment hole saws; Assortment drill bits; Fire extinguisher; Tarps; Drill bit sets; Wood bit sets; Screw driver sets; Hack saws; Tree saw; Hand saw; Shop brooms; Snow shovels; Saw horse brackets; 8 piece kitchen display cabinets, nice; 48" bath vanity with sink; 36" bath vanity with sink; 30" bath vanity cabinet only; 36" mirrored cabinet; 80-8' 2x4's; 165 precut 2x4 wall studs; 24 sheets 4x12 x1/2" sheetrock; Pile 1x4x16' and 1x4x8'; 20-1x12x16'; 5-4x8 Birch panels; 6-3/8 underlayment panels; 3-3/4" 4x8 oak plywood; 5 Industrial grade particle board; 12-3/4" OSB; 13-1/2" blue board insulation; 2-2" blue board insulation; 12-1/2" styrofoam insulation; Bundles of assorted molding; Molding rack full of clear and pre-finished molding; 1x6" Cedar beveled siding; 1x10" Cedar beveled siding; 1x4 and 1x6 pre-primed particle board; 15 oak & mahogany interior doors; 4-FRP panels in white; 6-3/8" soffit panels; 14 White bath panels; Louvered shutters, doors & bi-fold doors; 10 new storm doors, all sizes; 2-4x8x1/2" oak panels; 1/8" oak panel; 2-6x10 masonite bi-fold doors; 4-4x8 aluminum solar panels; 36-12' aluminum soffit; 27-12' Glacial white soffit; 40-12' white aluminum soffit; 16-8'x3/4" aluminum angle iron; Assortment storm windows; 36"x48" expandable aluminum; Assortment corrugated fiberglass panels; Roof edging, all colors; 14 Brown plastic down spouts; 6' & 7' brick molding; 13-4x8 plastic lattice; Assortment of corrugated fiberglass panels; 8" gas & wood burning pipe & fittings; Rack of misc new paint; Boxes caulking; Nails, nails, nails, nails; Dowels and display; Gutter parts; Painting accessories, brushes, rollers, misc; 3-4000 metal to wood screws; Rolls of plastic; 1500 sq ft plastic laminate; New handles for rollers, brooms; 8 Rolls valley tin; Bath ventilation fan; Nesco; 18qt roaster oven; 12" wind turbine; 2 Mr Heaters; 8 New & used windows; New light fixtures; Cast iron fire place grates; Lots of Elect supplies, boxes, outlets, switches, wire, covers; Snap-on spindle covers; Garage door springs; Guttering; Carpet lifter; 4-Carpet racks; Tracks for track lighting; Misc drop-in ceiling hardware; Pipe fittings; Several misc panels; 7 rolls new underground sprinkler tubing; Stainless double kit sink; Cast Iron double kit sink; 2-Bathroom sinks; Lots of plumbing supplies, parts; Aqua Star instant hot water heater; Power Star elect instant hot water heater; new kitchen & bath faucets; Several preformed countertops; 3 desks; Duncan Fife drop leaf table; Dining room table W/4 chairs; 2 wheel dollies; Paint shaker; Lots of door handles; Cement trowels; Taping knife; Box pliers; Almost new Brothers 2820 laser printer; Window well covers; Assortment window shutters; New wood drill bits; Work Mover roller stand; Misc light bulbs; Deck 7 sheetrock screws; Corner shower walls; Several wood racks; Power washer W/sand blaster; 8x10 metal storage building; 8' rollup overhead door; Round nail bin W/scales; 4-P 215 R15 tires on wheels, almost new; 125' steel shelving double sided; Shop vac.

As you can imagine after 37 years in business there are many more small new items we can't list. This will be a large sale so we will start at 9:30 a.m.. Plan now to attend.  
Pictures on [www.goodlandhomestead.com/auctions](http://www.goodlandhomestead.com/auctions)  
Terry Richardson Broker/Auctioneer

from other viewpoints...

# History weighs heavily on conflict

The relentless missile attacks on Israel now exceed 2,600 in the first 20 days of the Hamas/Israeli War. Fortunately only 43 Israeli soldiers have been killed because of Israel’s elaborate missile defense system. Return fire, however, has reportedly left 1,035 Palestinians dead in a war that appears to have no immediate end, despite President Barack Obama’s appeal for a cease-fire. At issue, and a major reason for the Israeli ground offensive in the Gaza Strip, are the million-dollar concrete-lined tunnels from the Strip into Israel designed to launch internal attacks inside heavily populated areas – 28 discovered to date. All this is commonly known.

Those who rush in with traditional answers to such conflicts like cease-fires and peace plans have no hope of ending the hostilities. This is perhaps the single most complex area on the planet and Jerusalem is geographically the home of three of the world’s largest and competing religions: Judaism, Islam and Christianity; the most aggressive being Islam, which has a very low tolerance for any faith other than their own.

History basically left the Israelis without a homeland during the Middle Ages and they were scattered largely throughout Europe mostly because of Islamic intolerance. England came to dominate the Middle East after World War I and they clearly favored the creation of a Jewish homeland in Palestine. A constant trickle of Jews flowed into Palestine joining those who had never left. World sympathy for the scattered Jews was amplified during and after World War II when Adolph Hitler annihilated at least 6 million of them and the trickle to Palestine turned into a river.

After the war, in 1947, the United Nations created the State of Israel. The plan was to divide the Holy Land between the Israelis and the Palestinians; each having its own homeland but the plan was rejected by the Palestinians and all Arabic countries, who denied Israel’s right to even exist. So much so that the League of Arab States formed in 1945 (consisting of the six surrounding countries) attacked Israel after it was recognized as a country by the United States. In the resultant war Israel retained its right to exist but the rest of the Palestine area was divided between competing Arabic states: Jordan had the West Bank and Egypt the Gaza Strip. Now, because of their refusal to allow the Jews a homeland, the Palestinians were without one. Arabic states again attacked Israel in 1967, vowing to destroy them, and were soundly defeated in a six-day war.

By this time the West had little interest in the original plan of providing the Palestinians a homeland and as a result of the wars encouraged by them, and the Arabic countries surrounding them, Israel had come to possess most of the land that would have made up a Palestinian state. Moreover, they were building settlements on it. The Palestinians longed to remove the Jews from “their” land and during the 1980’s initiated six years of uprisings and again in 2004 under Palestinian leader Yasser Arafat. The most contended Palestinian land included the West Bank, next to Jerusalem, and the Gaza Strip on the coast. Israel has been receptive to removing their settlements in these areas but the Arabic community still denies Israel’s right to exist, thus peace is unlikely to come to the region for some time.

Enter Hamas, which began as a Palestinian political party winning a majority of seats in the Palestinian Authority Parliament in 2006. It divided the Palestinian people into moderates and extremists (even terrorists) quite willing to use terroristic tactics such as human shields and suicide bombs to achieve their objectives. Hamas seized the Gaza Strip from the Palestinian Authority, which controlled the West Bank. It is this faction of the Palestinian people that have attacked Israel and that are responsible for the invasive tunnels into Israel.

Hopefully this historical overview will be helpful as we view the horrors of war from this part of the world. Meanwhile the missiles and death will continue.

—Dr. Harold Pease, an expert on the United States Constitution. He has taught history and political science from this perspective for over 25 years at Taft College. To read more of his weekly articles, please visit [www.LibertyUnderFire.org](http://www.LibertyUnderFire.org).

## The Goodland Star-News

(USPS No. 222-460. ISSN 0893-0562)

Member: Kansas Press Association

Inland Press Association Colorado Press Association

National Newspaper Association

e-mail: [star.news@nwkansas.com](mailto:star.news@nwkansas.com)

Steve Haynes, President  
Kevin Bottrell, Editor  
Pat Schiefen, Society Editor  
Advertising Department

Jessica Harenberg, Reagan Osban and Angela Bonham  
Sheila Smith, Circulation Manager

### Nor’west Press

Richard Westfahl, General Manager  
Gary Stewart, Jim Bowker, James Jackson  
Tracy Traxel, Rebecca Satterlee, Gloria Bustillos,  
and Judy McKnight



[nwkansas.com](http://nwkansas.com)

N.T. Betz, Director of Internet Services  
([nbetz49@nwkansas.com](mailto:nbetz49@nwkansas.com))

Evan Barnum, Systems Admin. ([support@nwkansas.com](mailto:support@nwkansas.com))

Published every Tuesday and Friday except the days observed for New Year’s Day, Memorial Day, July 4th, Labor Day, Thanksgiving and Christmas Day, at 1205 Main Ave., Goodland, Kan. 67735.

Periodicals postage paid at Goodland, Kan. 67735; entered at the Goodland, Kan., Post Office under the Act of Congress of March 8, 1878. POSTMASTER: Send address changes to The Goodland Star-News, 1205 Main Ave., Goodland, Kan. 67735.

TELEPHONE: (785) 899-2338. Editorial e-mail: [star-news@nwkansas.com](mailto:star-news@nwkansas.com). Advertising questions can be sent to: [goodlandads@nwkansas.com](mailto:goodlandads@nwkansas.com)

The Goodland Star-News assumes no liability for mistakes or omissions in advertising or failure to publish beyond the actual cost of the ad.

SUBSCRIPTIONS: In Sherman County and adjacent counties: three months, \$29; six months, \$46; 12 months, \$81. Out of area, weekly mailing of two issues: three months, \$39; six months, \$54; 12 months, \$89 (All tax included). Mailed individually each day: (call for a price).

Incorporating:

## The Goodland Daily News

1932-2003

The Sherman  
County Herald

Founded by Thomas McCants  
1935-1989

THE SHERMAN COUNTY  
STAR

Founded by Eric and  
Roxie Yonkey  
1994-2001

## Nor’West Newspapers

Haynes Publishing Company



## Speak from the Heart

Life experiences teach plenty to those willing to learn. From the time I was a small boy, I remember my dad, uncles and grandfather talking and debating the issues of the day whenever we visited one another.

As I grew older, I began to hear some of what they said. I began to understand what they were talking about. But it has taken me several decades to process, learn from and use what my elders were saying about the issues of their days.

About the time I was half way through high school, something he said finally sunk in. Grandpa Bert always said when you know a little about an issue, it’s easy to form an opinion. When you learn a little more, it becomes a little more difficult to make a decision. And when you learn even more about an issue, your decision becomes, “just plain hard.”

Lately, I’ve been thinking a lot about the issue of farmers and ranchers who often toil long days away by themselves. Sometimes they feel isolated with their backs against the wall. More than one farmer has expressed a feeling of, “It’s me against the world.”

Never before in agriculture has it been more important for farmers to express their basic wants, hopes and needs. Things like protection of personal property, a sound education for their children and a responsible, nonintrusive federal government, water usage to mention a few.

Never before has there been such an opportunity to express agriculture’s needs. Today there are hundreds of satellites in orbit around our globe. Our cable system is loaded with hundreds of networks. The information high-



### Insight this week

• john schlageck

way continues to speed forward and we can communicate with people around the world instantly.

Today’s technology allows individuals to access videos, music, news, weather, markets and consumer information – literally anything happening in our world today.

It’s been more than three decades since newspapers entered the era of national and international publications. In this country, Christian Science Monitor and the Wall Street Journal pioneered the way.

Magazines and newspapers from all over the world are on line today, available for anyone with the time and desire to read them. Of course they are still being shipped by mail. You can also read news, weather, markets and sports and screen after screen on your computer.

And that’s not even mentioning all the data out there on social media – you know Twitter, Facebook, Pinterest – you name it, there’s data out there. All you really need is time.

With all of these different information avenues at your fingertips, it may also be easy for some to tune out and turn off. Farmers, ranchers, businessmen, bankers and professionals cannot afford to do that. We must utilize these communication tools to tell our story.

One way to help do this is by becoming active in the farm organizations and commodity

groups of your choice. They can provide the vehicle to help you tell agriculture’s story while developing sound farming policy that must be communicated.

Agriculture finally arrived as a headliner during the farm crisis of the mid-‘80s. Every day, newspapers, radios, televisions and computers are chock full of stories on agriculture. Subjects range from food additives in processing to agricultural chemicals. Stories include animal welfare, cholesterol in the diet, sugarless foods, the farm bill and finding ways to increase agricultural trade.

Remember, farmers and ranchers must continue to voice their message in the public information arena. Agriculture must utilize this medium to promote and persuade others to bring about change – change that will benefit agriculture and a society that relies on U.S. farmers and ranchers for the safest and most abundant food source in the world.

A Kansas citizen said it best more than 90 years ago, “This nation will survive, this state will prosper, the orderly business of life will go forward only if men can speak in whatever way given them to utter what their hearts hold – by voice, by postal card, by letter or by press.”

William Allen White wrote this in his Emporia Gazette during the post-World War I recession in 1922. These words ring true today.

John Schlageck is a leading commentator on agriculture and rural Kansas. Born and raised on a diversified farm in northwestern Kansas, his writing reflects a lifetime of experience, knowledge and passion.

## Not letting a marriage drift apart

Not long after Donna and I were married, one of my married sisters bought a waterbed. Waterbeds were a new thing at the time, and not technologically advanced. They were simply a big, thick plastic bag full of water. Instead of being flat like a bed, they rounded up in the middle like a ball, or dipped in like a bowl, depending on how full they were filled. To add to that, the minute a person laid down on the bed, the whole shape changed. Today, waterbeds have different chambers and heaters, and many other things to make them better, but none of that existed in the beginning.

Nonetheless, everyone wanted to try one out, including me. So when my sister asked us if we would mind watching their home while they went away on vacation, I jumped at the chance, knowing we would get to sleep on their new waterbed.

My father, in his normal, dry humorous way, commented that he had heard ecclesiastical leaders were against people owning waterbeds. My brother-in-law, who didn’t know my father’s sense of humor as well as I did, took the bait and asked why.

“Because it causes married couples to drift apart,” my father answered wryly, without hardly breaking a smile.

It came time for my sister and her husband to go away on their vacation, and we went to watch their house. The evening arrived and it eventually came time to go to bed. I laid down on the bed, right on the edge, like I would on my own bed. Inside the bed a wave formed and sloshed to the other side, only to rebound, and when it hit me, I was thrown on the floor.

I got up, dusted myself off, and laid down on it much more gently. It folded up around me, and being somewhat claustrophobic, that didn’t thrill me either. Donna came in and commented how comfortable it looked.

I had finally started to relax by then, and I smiled. “Yeah. It’s not too bad once you get used to it.”

She sat down on her edge and bounced up



### from other pens

• commentary

and down a few times to test how it felt. But her action created a wave that once again tossed me, and one more time I found myself lying on the floor. I got up and she giggled, but promised to be more careful.

I found that when we both laid down, the bed wasn’t too bad, and I didn’t sink clear into it. The pressure of the extra weight was what they had adjusted it to. However, every movement either of us made during the night seemed to be amplified a hundred fold by the time the wave it caused reached the other person. The continual rocking motion, coupled with the sound of sloshing water, made it so I had to use the restroom continually. The rolling waves also made me feel seasick.

The final straw came when we realized the bed had a pin-sized leak in it. They had patched it, and had not worried about telling us. We didn’t know that the patch would gradually wear off, and then it would leak again when someone laid on the bed. It just happened our timing was perfect to be there when it had worn off.

## where to write

U.S. Sen. Pat Roberts, 109 Hart Senate Office Building, Washington D.C. 20510. (202) 224-4774; website – [roberts.senate.gov](http://roberts.senate.gov).

U.S. Sen. Jerry Moran, 354 Russell Senate Office Building, Washington, D.C. 20510. (202) 224-6521; Fax (202) 228-6966. website – <http://moran.senate.gov>.

U.S. Rep. Tim Huelskamp, 1st Congress-

sional District, 126 Cannon House Office Building, Washington D.C., 20575-1601. (202-225-2715) Website – <https://huelskamp.house.gov>.

State Rep. Ward Cassidy, State Capitol Building Rm 151-S, 300 SW 10th, Topeka, Kan. 66612. Phone (785) 296-7616, home (785) 332-2850; e-mail address [ward.cassidy@house.ks.gov](mailto:ward.cassidy@house.ks.gov).

# District Judge orders court records unsealed in Parsons murder trial

District Judge Robert Fleming Tuesday rescinded an order he entered in May sealing court records in the legal proceedings against a defendant in a November 2013 quadruple murder here.

The judge had entered a blanket order sealing documents in the case against David Cornell Bennett Jr., who is charged in the deaths of a Parsons mother and her three children ages 9, 6 and 4.

Plaintiffs on the motion to intervene included the Parsons Sun, Montgomery County Chronicle

and TV station KOAM in Pittsburg.

Fleming ruled his previous order did not meet the requirements of a 1981 Kansas Supreme Court case, Kansas City Star v. Fossey. That case created a procedure that would seal records only on the basis of "clear and convincing evidence" such seals were necessary to ensure a fair trial and that alternatives to sealing the records were unavailable.

Fleming said after hearing the plaintiff's arguments from Max Kautsch, a Lawrence attorney, that

he would lift the seals effective Aug. 4, but he gave attorneys in the case until then to submit motions requesting sealing of documents that complied with the Fossey decision.

"This is a huge victory for the public because it makes clear Fossey is the rule and that the automatic sealing of records does not meet the letter of the law," said Doug Anstaett, executive director of the Kansas Press Association.

Since the arrest of the defendant on Nov. 26, 2013, motions had been filed to seal almost all docu-

ments filed in the case. The case has been handled by the Kansas Attorney General's Office and Labette County attorney.

Kautsch argued in his motion to intervene that documents "ordinarily" available to the public are sealed and "the public's access to information regarding the progress of this case has been chilled. This case is proceeding in secret."

Ron Keefover, president of the Kansas Sunshine Coalition for

Open Government, said the Coalition is elated at news of the judge's decision.

"We sincerely appreciate Judge Fleming's thoughtful analysis in his decision on the motion by the media to intervene. The judge's decision follows the spirit and letter of the law the Kansas Supreme Court set forth when it adopted clear and precise guidelines for keeping our courtroom doors and court records open.

Public access to open and honest courts is an important pillar of our society that distinguishes our country from many third-world countries where court cases are shrouded in secrecy. People simply fear and mistrust the unknown, particularly when it involves matters as serious as those brought before our courts. It is the Coalition's fervent hope that Judge Fleming's leadership lead the way for other courts grappling with the fair-trial/ free-press issue."

## Kansas legislators fight bird listing

BIRD, from Page 1

report to Congress and make available to the public information on funds used to respond to lawsuits."

Huelskamp said western Kansas has already seen major disruptions because of the listing, and industries there will continue to face uncertainty and extra costs.

"Although this is only one step in the right direction, it is an important one in reforming an ESA that does not work," he said. "There must be transparency and accountability at the federal level - especially because of the overreach we continue to see from the Obama Administration. This bill sends a message to the USFW and their liberal environmental allies who are targeting hundreds of other species to list under outrageous "sue and settle" agreements - we will fight to protect our economy and our jobs."

The Kansas Natural Resource Coalition, a group of western Kansas counties headed by Sherman County Commissioner Ken Klemm, issued a statement supporting the legislation: "We are pleased that Representative Huelskamp has sponsored this common sense legislation that will go a long way to protecting, not only the citizens of Western Kansas, but all Americans whose livelihoods and way of life are threatened by a runaway Endangered Species Act. The Kansas Natural Resource Coalition strongly supports Rep. Tim Huelskamp in this fight."

The second piece of legislation, Senate Bill 2623, was introduced late last week by Kansas Sen. Jerry Moran. The bill would stop the federal Agriculture and Interior departments from changing land management practices based on the prairie chicken listing.

"I am confident there are ways to address conserving the species while not hampering economic growth and farming and ranching activities," Moran said. "The lesser prairie chicken listing has already resulted in real consequences for a number of Kansas industries including agriculture, oil and gas development, ranching, transportation and wind energy. I am committed to making certain the measures implemented are based on sound science and common sense, as well as to represent the best interest of producers."

Moran is also a cosponsor of Senate Bill 2677, which would remove the bird from threatened status for five years so that states conservation plans could have time to work before a re-evaluation of the bird's status would take place.

| NOTICE OF BUDGET HEARING   |                            |                  |                                |   |                                   |                               |                     |
|--|----------------------------|------------------|--------------------------------|---|-----------------------------------|-------------------------------|---------------------|
| The governing body of<br><b>Northwest Kansas Library System</b><br><b>Norton County</b>  |                            |                  |                                |   |                                   |                               |                     |
| will meet on August 18, 2014 at 3:00 PM at Pioneer Memorial Library, Colby, Kansas for the purpose of hearing and answering objections of taxpayers relating to the proposed use of all funds and the amount of tax to be levied. Detailed budget information is available at Northwest Kansas Library System, Norton, Kansas and will be available at this hearing. |                            |                  |                                |   |                                   |                               |                     |
| <b>BUDGET SUMMARY</b>  |                            |                  |                                |   |                                   |                               |                     |
| Proposed Budget 2015 Expenditures and Amount of 2014 Ad Valorem Tax establish the maximum limits of the 2015 budget. Estimated Tax Rate is subject to change depending on the final assessed valuation.  |                            |                  |                                |   |                                   |                               |                     |
| FUND   | Prior Year Actual for 2013 |                  | Current Year Estimate for 2014 |   | Proposed Budget Year for 2015     |                               |                     |
|  | Expenditures               | Actual Tax Rate* | Expenditures                   | Actual Tax Rate*  | Budget Authority for Expenditures | Amount of 2014 Ad Valorem Tax | Estimated Tax Rate* |
| General  | 492,227                    | 1.094            | 573,228                        | 1.264   | 577,328                           | 542,714                       | 1.125               |
| Employee Benefits  | 57,501                     | 0.140            | 86,800                         | 0.184   | 89,800                            | 84,240                        | 0.175               |
| Totals   | 549,728                    | 1.234            | 660,028                        | 1.448   | 667,128                           | 626,953                       | 1.300               |
| Less: Transfers  | 0                          |                  | 0                              |   | 0                                 |                               |                     |
| Net Expenditures   | 549,728                    |                  | 660,028                        |   | 667,128                           |                               |                     |
| Total Tax Levied   | 510,165                    |                  | 612,136                        |   | XXXXXXX                           |                               |                     |
| Assessed Valuation   | 413,680,552                |                  | 423,087,261                    |   | 482,619,791                       |                               |                     |
| *Tax rates are expressed in mills.   |                            |                  |                                |   |                                   |                               |                     |
| George Seamon<br>Director  |                            |                  |                                | Published in The Goodland Star-News on Tuesday, August 5, 2014. |                                   |                               |                     |

Like us on Facebook

# The Goodland Star News Service Directory



**Goodland Home Health, LLC**  
**Sue McCracken, RN**  
655-B E. 22nd, Goodland, KS  
**Office: (785) 890-7658 • Cell: (785) 821-0050**  
*We provide the best care for those individuals due to illness who are unable to care for themselves or their loved ones.*



**MD ROOFING**  
FREE INSPECTION ~ FREE ESTIMATES  
PHONE: (785) 332-4561  
#14-006109



**better water. pure and simple.®**  
• Drinking Systems • Water Softeners (Sales & Rentals)  
• Water Coolers • Salt Sales & Delivery  
**Scheopner's Water Conditioning, Inc.**  
Goodland & Colby, KS • Toll free: (800) 536-2352



**BURLINGTON**  
FAMILY DENTISTRY



**Justin Evanston**  
DDS, MD  
Oral Surgeon



**Jason Ehtessabian**  
DDS, FAGD, PC  
Fellow of the  
Academy of General Dentistry

**Dr. Justin Evanston** **Dr. E**

**IV Sedation, Wisdom teeth removal, Implant placement, and Exceptional Comprehensive Dental Care for the Entire Family!**

**(719) 346-8266** 340 14th St.  
Burlington, CO  
**www.burlingtonfamilydentistry.net**




**I make insurance simple.**

**Lynn A. Hoelting**  
1610 Main  
Goodland, KS 67735  
785-899-2378  
lynn.hoelting@fbfs.com  
**Auto | Home | Life | Farm/Ranch | Business | College | Retirement**  
Farm Bureau Property & Casualty Insurance Company, Western Agricultural Insurance Company, Farm Bureau Life Insurance Company, West Des Moines, IA. \*Company providers of Farm Bureau Financial Services MC0550-ME-02 (3-14)



**FARM BUREAU FINANCIAL SERVICES**



**Newbanks Pumps, Inc.**  
*We sell the best and service the rest!*  
**Water Well Drilling & Service**  
~ Irrigation wells ~ Domestic wells  
~ Stock wells ~ Solar Systems  
**Curt Goble, Owner**  
Ph: (785) 899-6302 ~ Email: newbankspumps@gmail.com  
CO #841 • KS #856 • Elec. Cont. #6127



**LOSE YOUR COOL?**  
**Don't Despair...We Will Repair!**  
**Bowman Heating & Air Conditioning**  
**(785) 899-5770**  
577 W. 31st, Goodland, KS 67735



**The Decorating Co.**  
Interior Design Consultants  
**Irene Smith & Rochelle Kling**  
*There's no limit to our imagination.*  
**106 E. 11th, Goodland, KS 67735**  
(785) 890-5441  
E-mail: decorco@st-tel.net



**"Seek Shelter Today!"**  
**LIFE • HOME • CAR • FARM • BUSINESS**

**Jim Alcorn, Agent**  
1624 S. Main Street  
Goodland, KS 67735-0727  
Business: (785) 899-2553

**www.shelterinsurance.com**






**Windy Plains Bike Shop**  
Professional bicycle repairs since 1978!  
Parts, accessories and service for all makes.  
Pick up and delivery available in Goodland!

**TIRED OF FLATS?**  
ASK ABOUT OUR NO FLAT GUARANTEE!

**Harold Sneath**  
6085 Rd. 17  
(785) 899-4786 • (785) 899-5858 (home)  
Same day service on most out of town repairs!



**WANTED: DIRTY CARPET**  
**IF YOU HAVE DIRTY CARPET, WE CAN STEAM CLEAN IT.**  
**NO JOB TOO BIG OR TOO SMALL!**

- Commercial/Residential
- Advanced Truck Mounted Steam Cleaning Equipment
- Water Damage Restoration
- FREE ESTIMATES

**PRO FLOOR CARE**  
Carpet & Upholstery Cleaning  
(785) 462-8313 or (800) 473-4138



**Langer Industrial Service**  
2022 County Road 11 • Levant, KS 67743 • 785-586-2208  
Monday - Friday 8 a.m. - 5 p.m.

**We pay cash up to for all scrap metal\***

- Brass • Copper • Aluminum • Batteries • Electric motors • Cars
- Combines • Farm Equipment • Prepared/Unprepared Iron and Tin
- Container Service • Off site baling and car crushing
- Limited pickup service available

*\*schedule deliveries after normal business hours by appointment when necessary*  
\* Some Conditions Apply




**AMERICAN BUILDINGS**  
A NUCOR COMPANY



**ERIC RICHARDSON CONSTRUCTION INC.**  
48515 SNEAD DRIVE. BURLINGTON CO 80807

**SERVING EASTERN COLORADO AND WESTERN KANSAS**  
OWNER: ERIC RICHARDSON 719-346-8730 SALES: MIKE RITTS






**NEW SYSTEM PROFESSIONAL WINDOW CLEANING**

**Serving Northwest Kansas & Northeastern Colorado since 1992!**



**Hot Brush**  
*Michael S. Boyson*  
**BANNERS - LETTERING - PINSTRIPES - ART**  
Award winning Quality signs since 1974  
204 W. 4th Bird City, Kansas  
**785-734-2423**



**"Where Service is an Affair of the Heart"**  
**DAN BRENNER FORD, INC.**  
222 W. HWY. 24, I-70 BUSINESS LOOP, GOODLAND, KS  
(Toll Free) 800-636-8770  
(Business) 785-899-2316 (Fax) 785-899-2317

**(785) 462-6995 OR (800) 611-6735**  
egriffith@st-tel.net  
**www.mywindowcleaner.net**



Eldean and Janet Griffith • PO Box 692, Colby, KS

All Central Time, for Kansas Mountain Time Stations subtract an hour

| Tuesday Evening                                       |                     |           |                      |           |                      |           | August 5, 2014      |                     |                |               |  |
|---|---------------------|-----------|----------------------|-----------|----------------------|-----------|---------------------|---------------------|----------------|---------------|--|
|   | 7:00                | 7:30      | 8:00                 | 8:30      | 9:00                 | 9:30      | 10:00               | 10:30               | 11:00          | 11:30         |  |
| ABC   | CMA Music Festival  |           |                      |           |                      |           | Local               | Jimmy Kimmel Live   |                | Nightline     |  |
| CBS   | NCIS                |           | NCIS: Los Angeles    |           | Person of Interest   |           | Local               | Late Show Letterman |                | Ferguson      |  |
| NBC   | Food Fighters       |           | America's Got Talent |           |                      |           | Local               | Tonight Show        |                | Meyers        |  |
| FOX   | Fam. Guy            | Brooklyn  | New Girl             | Mindy     | Local                |           |                     |                     |                |               |  |
| Cable Channels  |                     |           |                      |           |                      |           |                     |                     |                |               |  |
| A & E   | Storage             | Storage   | Shipping             | Shipping  | Storage              | Storage   | Storage             | Storage Wars        |                | Local         |  |
| AMC   | Jaws 2              |           | Jaws 2               |           |                      |           |                     |                     | Tremors        | Local         |  |
| ANIM  | Bear Feeding Frenzy |           | Lion Feeding Frenzy  |           | Shark Feeding Frenzy |           | Bear Feeding Frenzy |                     | Feeding        | Local         |  |
| BET   | Just Wright         |           | Apollo Live          |           | Apollo Live          |           | Wendy Williams Show |                     | Col/Hill       | Local         |  |
| BRAVO   | Housewives/NYC      |           | Housewives/NYC       |           | Housewives/NYC       |           | Happens             | Housewives/NYC      | Jersey         |               |  |
| CMT   | Local               | Local     | Reba                 | Reba      |                      | Reba      | Tombstone           |                     |                |               |  |
| CNN   | Anderson Cooper 360 |           | CNN Tonig            | TBA       | Anderson Cooper 360  |           | CNN Newsroom        |                     | Newsroom       | Local         |  |
| COMEDY  | Tosh.0: Shart       |           | Drunk                | Nathan    | Daily                | Colbert   | At Midnig           | Drunk History       |                | Local         |  |
| DISC  | Local               | Local     | Deadliest Catch      |           | Deadliest Catch      |           | Deadliest Catch     |                     |                |               |  |
| DISN  | Local               | Local     | Jessie               | Liv-Mad.  | Austin               | Girl Meet | Lemonade Mouth      |                     |                |               |  |
| E!  | Botched             |           | Botched              |           | RichKids             | RichKids  | Chelsea             | E! News             |                | Chelsea       |  |
| ESPN  | World/Poker         |           | Baseball Tonight     |           | SportsCenter         |           | SportsCenter        |                     | SportCtr       | Local         |  |
| ESPN2   | Little League       |           | NFL Live             |           | Olbermann            |           | Olbermann           |                     | Baseball       | Local         |  |
| FAM   | Chasing Life        |           | Pretty Little Liars  |           | The 700 Club         |           | Chasing Life        |                     | Liars          | Local         |  |
| FOOD  | Local               | Local     | Chopped              |           | Chopped              |           | Chopped             |                     | Chopped        |               |  |
| FX  | Safe House          |           |                      |           | Tyrant               |           | Tyrant              |                     | The Bridge     |               |  |
| HGTV  | Flip or F           | Flip or F | Flip or F            | Flip or F | Hunters              | Hunt Intl | Flip or F           | Flip or F           | Flip or F      | Flip or F     |  |
| AmericanProfile // CELEBRATING THE AMERICAN SPIRIT // |                     |           |                      |           |                      |           |                     |                     |                |               |  |
| HIST  | Cnt. Cars           | Cnt. Cars | Horse                | Horse     | Biker Battleground   |           | Cnt. Cars           | Counting Cars       |                | Local         |  |
| LIFE  | Dance Moms          |           | Asia                 | Asia      | Asia                 | Asia      | Dance Moms          |                     |                | Local         |  |
| MTV   | Finding Carter      |           | Finding Carter       |           | Virgin Territory     |           | Beastly             |                     |                | Local         |  |
| NICK  | Local               | Local     | Sam & Cat            | Witch     | Nick News            | Full H'se | Full H'se           | Full H'se           | Full H'se      | Full H'se     |  |
| SCI   | Face Off            |           | Wil Whe.             | Wil Whe.  | Face Off             |           | Wil Whe.            | Wil Whe.            | Black          | Local         |  |
| SPIKE   | Shooter             |           |                      |           | The Losers           |           |                     |                     |                | Local         |  |
| TBS   | Big Bang            | Big Bang  | Sullivan             | Big Bang  | Conan                |           | Sullivan            | Conan               |                | Local         |  |
| TCM   | Ball of Fire        |           | Night Nurse          |           | There's Always       |           |                     | Tomorrow            |                | Man Cloak     |  |
| TLC   | Local               | Local     | Extreme C            | Extreme C | Next Great Baker     |           | Next Great Baker    |                     |                | Bakery Rescue |  |
| TNT   | Rizzoli & Isles     |           | Perception           |           | Rizzoli & Isles      |           | Perception          |                     |                | Local         |  |
| TOON  | Cleveland           | Cleveland | Amer. Dad            | Amer. Dad | Fam. Guy             | Fam. Guy  | Chicken             | Aqua Teen           | Venture        | Local         |  |
| TRAV  | BBQ Challenge       |           | Food Paradise        |           | Man, Food            | Man, Food | BBQ Challenge       |                     | Food Par.      | Local         |  |
| TV LAND   | King                | King      | King                 | King      | Cleveland            | Jennifer  | Everybody-Raymond   |                     | Raymond        | Local         |  |
| USA   | Royal Pains         |           | Covert Affairs       |           | Mod Fam              | Mod Fam   | Royal Pains         |                     |                | Local         |  |
| VH1   | Love, Hip Hop       |           | All About Benj.      |           |                      |           | Dating Naked        |                     | Hip Hop        | Local         |  |
| WGN   | Kill Bill: Vol. 2   |           |                      |           | Manhattan            |           | Manhattan           |                     | Parks          |               |  |
| Premium Channels                                      |                     |           |                      |           |                      |           |                     |                     |                |               |  |
| HBO   | Local               | Local     | Dark Knight          |           |                      |           | The Leftovers       |                     | Hard Knocks    |               |  |
| MAX   | Local               | Local     | Admission            |           |                      |           |                     |                     | Identity Thief |               |  |
| SHOW  | Local               | Local     | Barbershop 2: Back   |           |                      |           | Masters of Sex      |                     | Ray Donovan    |               |  |
|   |                     |           |                      |           |                      |           |                     |                     | Masters of Sex |               |  |

©2009 Hometown Content, listings by Zap2it

| Wednesday Evening |                      |            |                      |                  |                     |            | August 6, 2014      |                     |                   |           |
|-------------------|----------------------|------------|----------------------|------------------|---------------------|------------|---------------------|---------------------|-------------------|-----------|
|                   | 7:00                 | 7:30       | 8:00                 | 8:30             | 9:00                | 9:30       | 10:00               | 10:30               | 11:00             | 11:30     |
| ABC               | Middle               | Goldbergs  | Mod Fam              | Middle           | Nashville           |            | Local               | Jimmy Kimmel Live   | Nightline         |           |
| CBS               | Big Brother          |            | Criminal Minds       |                  | Extant              |            | Local               | Late Show Letterman | Ferguson          |           |
| NBC               | America's Got Talent |            | America's Got Talent |                  | Taxi Brooklyn       |            | Local               | Tonight Show        | Meyers            |           |
| FOX               | So You Think         |            |                      |                  | Local               |            |                     |                     |                   |           |
| Cable Channels    |                      |            |                      |                  |                     |            |                     |                     |                   |           |
| A & E             | Duck D.              | Duck D.    | Duck D.              | Big Smo          | Wahlburgers         |            | Duck D.             | Duck Dynasty        |                   | Local     |
| AMC               | Jaws 3               |            |                      | Jaws the Revenge |                     |            |                     | The Mummy Returns   |                   | Local     |
| ANIM              | Treehouse Masters    |            | Confessions          |                  | Monsters Inside Me  |            | Treehouse Masters   | Monsters            |                   | Local     |
| BET               | This Christmas       |            |                      |                  | The Game            |            | Wendy Williams Show | Col/Hill            |                   | Local     |
| BRAVO             | Housewives/OC        |            | Million--Miami       |                  | Top Chef Duels      |            | Happens             | Top Chef Duels      |                   | Top Chef  |
| CMT               | Local                | Local      | Reba                 | Reba             | Shanghai Knights    |            |                     |                     |                   |           |
| CNN               | Anthony Bourd.       |            | CNN Tonig            | TBA              | Anderson Cooper 360 |            | CNN Newsroom        | Newsroom            |                   | Local     |
| COMEDY            | South Park           |            |                      |                  | Daily               | Colbert    | At Midnig           | The Meltdown-Jonah  |                   | Local     |
| DISC              | Local                | Local      | Fast N' Loud         |                  | Fast N' Loud        |            | Fast N' Loud        |                     | Fast N' Loud      |           |
| DISN              | Local                | Local      | Jessie               | Liv-Mad.         | Austin              | Girl Meet  | Dog                 | Gravity             | Jessie            | I Didn't  |
| E!                | RichKids             | RichKids   | Kardashian           |                  | The Soup            | The Soup   | Chelsea             | E! News             |                   | Chelsea   |
| ESPN              | MLB Baseball         |            |                      |                  | SportsCenter        |            | SportsCenter        |                     | SportCtr          | Local     |
| ESPN2             | SportCtr             | MLS Soccer |                      |                  |                     |            | Olbermann           |                     | Baseball          | Local     |
| FAM               | Sydney White         |            |                      |                  | The 700 Club        |            | Young               | Mystery             | Prince            | Local     |
| FOOD              | Local                | Local      | Restaurant: Im.      |                  | Restaurant Steakout |            | Restaurant Steakout |                     | Restaurant: Im.   |           |
| FX                | Immortals            |            |                      |                  | The Bridge          |            | The Bridge          |                     | Tyrant            |           |
| HGTV              | Cousins Undercover   |            | Property Brothers    |                  | Hunters             | Hunt Intl  | Property Brothers   |                     | Property Brothers |           |
| HIST              | American Pickers     |            | American Pickers     |                  | Pawn.               | Pawn.      | American Pickers    |                     |                   | Local     |
| LIFE              | Bring It!            |            | BAFs                 |                  | Asia                | Asia       | Bring It!           |                     |                   | Local     |
| MTV               | Teen Mom 2           |            | Teen Mom 2           |                  | Virgin Territory    |            | Teen Mom 2          |                     | Virgin            | Local     |
| NICK              | Local                | Local      | Sam & Cat            | Witch            | Full H'se           | Full H'se  | Full H'se           | Full H'se           | Full H'se         | Full H'se |
| SCI               | Eragon               |            |                      |                  | Age of the Dragons  |            |                     |                     | Fire & Ic         | Local     |
| SPIKE             | Cops                 | Cops       | Cops                 | Cops             | Cops                | Jail       | Police Videos       |                     | Police            | Local     |
| TBS               | Big Bang             | Big Bang   | Big Bang             | Big Bang         | Conan               |            | Office              | Conan               |                   | Local     |
| TCM               | I Am a Fugitive      |            | Scarface             |                  |                     | Black Fury |                     |                     |                   | Local     |
| TLC               | Local                | Local      | To Be Announced      |                  | Who Do You          |            | Who Do You          |                     | Who Do You        |           |
| TNT               | Castle               |            | Castle               |                  | The Last Ship       |            | Falling Skies       |                     |                   | Local     |
| TOON              | Cleveland            | Cleveland  | Amer. Dad            | Amer. Dad        | Fam. Guy            | Fam. Guy   | Chicken             | Aqua Teen           | Venture           | Local     |
| TRAV              | American Grilled     |            | BBQ Crawl            | BBQ Crawl        | Man, Food           | Man, Food  | American Grilled    |                     | BBQ Crawl         | Local     |
| TV LAND           | King                 | King       | Cleveland            | Jennifer         | Cleveland           | Jennifer   | Raymond             | Raymond             | Cleveland         | Local     |
| USA               | Suits                |            | Graceland            |                  | Mod Fam             | Mod Fam    | Suits               |                     |                   | Local     |
| VH1               | Fabulous Life        |            | Linda Perry          |                  | Fabulous Life       |            | Linda Perry         |                     | Take Me           | Local     |
| WGN               | Rules                | Rules      | Rules                | Rules            | Rules               | Rules      | Rules               | Rules               | Parks             | Parks     |
| Premium Channels  |                      |            |                      |                  |                     |            |                     |                     |                   |           |
| HBO               | Local                | Local      | Hard                 |                  | Dodgeball: Underdog |            | True Blood          |                     | Real Time, Bill   |           |
| MAX               | Local                | Local      | Pacific Rim          |                  | Behind Enemy Lines  |            |                     |                     | Big Momma's House |           |
| SHOW              | Local                | Local      | Coach Carter         |                  |                     |            | 60 Minutes Sports   |                     | David Bowie       |           |

©2009 Hometown Content, listings by Zap2it

| Thursday Evening |                      |            |                   |                |                     | August 7, 2014 |                            |                     |             |             |  |
|------------------|----------------------|------------|-------------------|----------------|---------------------|----------------|----------------------------|---------------------|-------------|-------------|--|
|                  | 7:00                 | 7:30       | 8:00              | 8:30           | 9:00                | 9:30           | 10:00                      | 10:30               | 11:00       | 11:30       |  |
| ABC              | The Quest            |            | Rookie Blue       |                | NY Med              |                | Local                      | Jimmy Kimmel Live   | Nightline   |             |  |
| CBS              | Big Bang             | Mom        |                   |                | Elementary          |                | Local                      | Late Show Letterman | PGA         |             |  |
| NBC              | Hollywood Game Night |            | Welcome           | Engels         | Last Comic Standing |                | Local                      | Tonight Show        |             | Meyers      |  |
| FOX              | Sleepy Hollow        |            | Gang Related      |                | Local               |                |                            |                     |             |             |  |
| Cable Channels   |                      |            |                   |                |                     |                |                            |                     |             |             |  |
| A & E            | The First 48         |            | The First 48      |                | The First 48        |                | The First 48               |                     |             | Local       |  |
| AMC              | Jaws                 |            |                   |                | Jaws 2              |                |                            |                     |             | Local       |  |
| ANIM             | Ice Lake Rebel       |            | Alaskan Bush      |                | Ice Lake Rebel      |                | Alaskan Bush               |                     | Alaska      | Local       |  |
| BET              | Janky Pro            | Barbershop |                   |                |                     |                | Wendy Williams Show        |                     | Col/Hill    | Local       |  |
| BRAVO            | Tardy                | Tardy      | Tardy             | Extreme Guide  | Tardy               |                | Happens                    | Housewives NJ       | Tardy       |             |  |
| CMT              | Local                | Local      | Reba              | Reba           | Party Down South    |                | Party Down South           |                     | Party Down  | South       |  |
| CNN              | The Sixties          |            | The Sixties       |                | Anderson Cooper 360 |                | The Sixties                |                     | The Sixti   | Local       |  |
| COMEDY           | Sunny                | Sunny      | Tosh.0: Shart     |                | Daily               | Colbert        | At Midnig                  | Tosh.0              |             | Local       |  |
| DISC             | Local                | Local      | MythBusters       |                | MythBusters         |                | MythBusters                |                     | MythBusters |             |  |
| DISN             | Local                | Local      | Jessie            | Liv-Mad.       | Austin              | Girl Meet      | Cloud 9                    |                     |             | Jessie      |  |
| E!               | Maria Menounos       |            | Kardashian        |                | Kardashian          |                | Chelsea                    | E! News             |             | Untold      |  |
| ESPN             | Little League        |            |                   |                | SportsCenter        |                | SportsCenter               |                     | SportCtr    | Local       |  |
| ESPN2            | WNBA Basketball      |            | Baseball Tonight  |                | Olbermann           |                | Olbermann                  |                     | Baseball    | Local       |  |
| FAM              | Grease               |            |                   |                | The 700 Club        |                | Prince                     | Prince              |             | Local       |  |
| FOOD             | Local                | Local      | Food Network Star |                | Chopped             |                | Chopped                    |                     | Beat Play   | Beat Play   |  |
| FX               | The Sitter           |            |                   |                | Married             | Worst          | Married                    | Worst               | Worst       | Married     |  |
| HGTV             | Fixer Upper          |            | Fixer Upper       |                | Hunters             | Hunt Intl      | My Big Fa                  | My Big Fa           | Fixer Upper |             |  |
| HIST             | Pawn                 | Pawn       | Pawn.             | Pawn.          | Horse               | Horse          | Pawn                       | Pawn Stars          |             | Local       |  |
| LIFE             | Project Runway       |            |                   | Undone         | Dance Moms          |                | Project Runway             |                     |             | Local       |  |
| MTV              | Ridic.               | Ridic.     | Ridic.            | Snack-Off      | Wild/Out            | Ridic.         | Ridic.                     | Snack-Off           | Snack-Off   | Local       |  |
| NICK             | Local                | Local      | Sam & Cat         | Witch          | Henry Danger        |                | Full H'se                  | Full H'se           | Full H'se   | Full H'se   |  |
| sci              | Dominion             |            |                   | Spartacus-Sand | Dominion            |                |                            |                     |             | Local       |  |
| SPIKE            | IMPACT Wrestling     |            |                   | Cops           | Cops                |                | Police Videos              |                     | Police      | Local       |  |
| TBS              | Big Bang             | Big Bang   | Big Bang          | Big Bang       | Conan               |                | Out West                   | Conan               |             | Local       |  |
| TCM              | The Naked Spur       |            | The Mortal Storm  |                |                     |                | The Shop Around the Corner |                     |             | Local       |  |
| TLG              | Local                | Local      | Leah Remi         | Leah Remi      | Honey               | Honey          | Honey                      | Honey               | Leah Remi   | Leah Remi   |  |
| TNT              | Castle               |            | Castle            |                | Murder in the First |                | Perception                 |                     |             | Local       |  |
| TOON             | Cleveland            | Cleveland  | Amer. Dad         | Amer. Dad      | Jesus               | Fam. Guy       | Loiter                     | The Eric            | Delocated   | Local       |  |
| TRAV             | The Loyerover        |            | The Loyerover     |                | Man, Food           | Man, Food      | The Loyerover              |                     | Loyerover   | Local       |  |
| TV LAND          | King                 | King       | King              | King           | Raymond             | Raymond        | Everybody-Raymond          |                     | Raymond     | Local       |  |
| USA              | Rh                   |            | Satisfaction      |                | Rugby               |                | Satisfaction               |                     |             | Local       |  |
| VH1              | Dating Naked         |            | Candily           | LeAnn          | Dating Naked        |                | Satisfaction               |                     |             | Local       |  |
| WGN              | How I Met            | How I Met  | How I Met         | How I Met      | MLB Baseball        |                | Candily                    | LeAnn               | Cant Wait   | Local       |  |
| Premium Channels |                      |            |                   |                |                     |                |                            |                     |             |             |  |
| HBO              | Local                | Local      | Hobbit-Unexpected |                | The Leftovers       |                | Kick-Ass 2                 |                     |             |             |  |
| MAX              | Local                | Local      | Sleepy Hollow     |                | The Conjuring       |                |                            |                     |             | The Patriot |  |
| SHOW             | Local                | Local      | The Warrior's Way |                | History, the Eagles |                |                            |                     |             |             |  |

**GARAGE SALE**  
**MOVING SALE:** 625 E. 5th. Saturday from 8 a.m. to 2 p.m.. Lots of stuff! -8-5-8-8-

**FREE!**  
**55 gallon ink drums**, need cleaning. In the alley behind The Goodland Star-News. -8-5-tfn-

**WANTED**  
**WANTED: truck driver (forklift?) to haul** press units from Norton to Colby. Call Gary at The Goodland Star-News at (785) 899-2338. -8-5-tfn-

**Antelope hunting....looking for permission** to archery hunt antelope. Happy to pay fee for exclusive privilege to hunt your land during season. Call 785-313-7757 for John and leave message if no answer. -7-29-8-15-

**Want to buy: John Deere diesel engines**, running or not. Call (785) 263-6275. -7-

25-8-19-

**Junk batteries**, non-ferrous metals and iron. Darrel Bowen. Phone 785-899-2578. -tfn-

## NOTICE

**American Profile Cookbooks Available!** Stop by The Goodland Star-News. -tfn-

## HELP WANTED

**Part-time front desk and housekeeping.** Holiday Inn Express in Goodland is looking to hire! Please stop by and pick up an application. -8-5-15-

**CNA and CMA shifts available on all shifts.** Flexible schedules, friendly environment, competitive wages, AFLAC and shift differentials. Contact Gary at Fairview Estates, 1630 Sewell Avenue, Colby, KS. (785) 462-2154. EOE. -cfp 8-1-8-12-

**Fuel Delivery Truck Driver needed.** Class B Driver's License with HazMat and

Tanker Endorsement Required or ability to obtain. Pick up job applications at 70 Webster Ave., Burlington or call 719-346-8180. -7-29-8-29-

**Motel 6 in Goodland.** We are hiring for front desk help. Starting pay \$9/hour. 11 a.m. to 5 p.m.. Please apply in person. -7-25-8-5-

**NAPA in Goodland is seeking** a full-time delivery driver and full-time counter person. Apply in person, or email resume to: napa@a2wr.com. -7-25-8-19-

**The team at Kansasland Tire of Norton** has an immediate opening for a service truck operator/general service person. Must have a valid driver's license. Competitive wages, 401k, insurance and uniforms. Experience preferred, but not necessary, we will train. Please stop by 11101 Rd. E1, Norton, and pick up an application or call (785) 877-5181. EOE. -2-14-tfn NORTON-

## FOR SALE

**Registered Toy Poodle puppies for sale.** First shots, Black, \$250. Call Deb at (785) 475-2054. -8-5-8-8-

**214 W. 9th, Goodland.** 3 bedroom, 2 bath house for sale. \$65,000. Call (785) 443-1443 to make appointment. -8-1-8-26-

**Home for sale by owner:** 1606 Clark Avenue, Goodland. 948 sq. ft. of living area. 2 bedroom, 1 bath, central heat/air. 1 car garage, small basement area (unfinished). All on 75'x140' large lot area. \$38,500. Please call (785) 821-0083. -7-25-8-5-

**Mueller 26ga. metal panels.** 57 pieces (27" long by 3' wide, 6" ribs), light stone color. Brand new, never opened. \$4,000 OBO. Call (719) 342-1500. -7-18-8-18-

**McNab puppies for sale**, out of working parents. Long Island, KS. Leave message at (308) 645-9085. -NT 5-13-tfn-

**Aluminum printing plates**, 23 5/8 x 30, never been inked. 50 cents each. Goodland Star-News. -1-24-tfn

**1948 Philco Radio/Phonograph cabinet**, good condition. Both radio and phono work. \$100.00. Call (719) 350-0705. -12-31-tfn-

**2 Harley Davidson die cast models.** 1-1:10 scale Hot Wheels HD Softail. 1-1:10 scale Maisto FLSTS Heritage Springer. Still in original boxes! Call Gary at (719) 350-0705. -9-24-tfn

**AWP tool belt/pouches** with kidney belt and suspenders. Paid \$100 plus, asking \$50. Call Gary at (719) 350-0705. -9-24-tfn

**FIREWOOD FOR SALE** in Goodland. Call (785) 890-7224 or (785) 821-2814. -12-11-tfn-

## FOR RENT

**Houses and apartments in Goodland.** All sizes. Call for details. (785) 890-6538. -1-10-tfn-

**Houses and apartments.** Cole Real Estate. 785-899-2683. -tfn-

## SERVICES

**Almanza's Interior Services, Inc..** Drywall specialist. Drywall hanging, drywall finishing, texture and paint. Free estimates. References available. Spanish call (785) 332-5353. English call (785) 890-6223. -3-7-tfn-

**Burlington-Goodland area.** Residential overhead door service and repair, 20 years experience. Call Gary at (719) 350-0705. -7-12-tfn

**CAT'S TNT for jewelry,** vinyl graphic designs, massages, quilting and more! Stop by 119 E. 9th, Goodland -3-23-tfn

# public notice

## IN THE DISTRICT COURT OF SHERMAN COUNTY, KANSAS

DIRECTOR OF TAXATION, DEPARTMENT OF REVENUE, STATE OF KANSAS, Plaintiff, vs.

Restaurant Panaderia Mexico 3 Inc.  
910 W US Hwy 24  
Goodland KS 67735  
Defendant.

Case No. 12ST8 14ST07 14ST14

### NOTICE OF TAX SALE

TO: The above-named Defendant and to all persons who are or may be concerned: Under and by virtue of a Tax Warrant filed in the above-entitled action, and pursuant to K.S.A.79-3617, K.S.A. 79-322, 107, K.S.A. 79-3235, K.S.A.79-3212/3413, K.S.A. 79-34, 100, K.S.A.79-5212 or K.S.A.79-6a11, I have levied upon and will offer for sale at public auction and sell to the highest and best bidder for cash in hand at, 3601 N St. Francis, Wichita, KS, in Sedgwick County KS on the 20th day of August, 2014, at 9:00 A.M. o'clock of said day, the business property of Restaurant Panaderia Mexico 3 Inc. located at 3601 N St. Francis, Wichita, KS, including

but not limited to:  
Restaurant Equipment and some miscellaneous

The above-described property is taken as property of the Defendant and will be sold, without appraisalment, to satisfy said Tax Warrant.

Director of Taxation  
Kansas Department of Revenue  
Randy Wharton  
Attorney for Plaintiff  
Kansas Department of Revenue  
Docking State Office Bldg.  
915 SW Harrison  
Topeka, Kansas 66612-2005  
Phone: (785)296-6124

Published in The Goodland Star-News, Tuesday August 5 and 12, 2014.

## IN THE DISTRICT OF SHERMAN COUNTY, KANSAS

(Pursuant to K.S.A. Chapter 59)

In the Matter of the Estate of: M. Merle Stasser, Deceased

Case No. 2011 PR 22

### NOTICE OF HEARING

THE STATE OF KANSAS TO

### ALL PERSONS CONCERNED:

You are hereby notified that a Petition has been filed in this Court by Alvin R. Stasser, dult appointed, qualified and acting co-Executor of the Estate of M. Merle Stasser, deceased, praying Petitioner's acts be approved; account be etitled and allowed; the heirs be determined; the Will be construed and assigned to the persons entitled thereto; the Court find jthe allowances requested for attorneys fees and expenses are reasonable and should be allowed; the costs be determined and ordered paid; the administration of the Estate be closed; upon the filing of Receipts th Petitioners be finally discharged as co-Executors of the Estate of M. Merle Staser, deceased; and trhe Petitioners be released from further liability.

You are required to file your written defenses thereto on or before the 19th day of August, 2014, at 9:00 o'clock A.M. in the District Court, Goodland, Sherman County, Kansas, at which time and place thye cause will be heard. Should you fail therein, judgment and decree will be entered in due course upon the petition.

Alvin R. Stasser,  
co-Executor

ALLAN L. HURLBURT, S.C.  
No. 09249  
P.O. Box 505  
Sharon Springs, Kansas 67758  
785-852-4246

Attorney for co-Executors

Published in The Goodland Star-News, Tuesday, July 22 and 29 and August 5, 2014.

## IN THE DISTRICT COURT OF SHERMAN COUNTY, KANSAS

In the Matter of the Estate of Leone Clara Freemyer Deceased

Case No: 14-PR-15

### NOTICE OF HEARING

### THE STATE OF KANSAS TO ALL PERSONS CONCERNED:

You are hereby notified that a Petition has been filed in this Court by Mary K. Motsenbocker, personal representative of Leone Clara Freemyer, deceased, requesting that the foreign will of Leone Clara Freemyer, deceased, dated May 5, 2012, be admitted to probate and record in this Court; no administration of the Estate is necessary; the will be construed, and the following Kansas real estate owned by the decedent, situated in Sherman County, Kansas:

The Northwest Quarter (NW¼) of Section Three (3), Township Six (6) South, Range Forty-two (42) West of the 6th P.M.;

The Southeast Quarter (SE¼) of Section Four (4), Township

Six (6) South, Range Forty-two (42) West of the 6th P.M.

be assigned in accordance with the terms of the Will.

You are required to file your written defenses to the Petition on or before August 19, 2014, at 10:00 a.m. in the District Court, in the city of Goodland, Sherman County, Kansas, at which time and place the cause will be heard. Should you fail to file your written defenses, judgment and decree will be entered in due course upon the

Petition.

Mary K. Motsenbocker, Petitioner

MICHAEL J. DAY, #8523  
KITE & DAY  
112 W. Washington, P.O. Box 575  
St. Francis, KS 67756  
(785) 332-3323  
Attorney for Petitioner

Published in The Goodland Star-News, Tuesday, July 29 and August 5 and 12, 2014.

## NOW HIRING!

### PART-TIME FRONT DESK STAFF

Flexible hours. Employee discount at Penny's Diner. Excellent promotional opportunities, Dynamic training program. APPLY TODAY! 801 N. Highway 27 (Junction of Hwy K-27 @ US-40) Sharon Springs, KS Phone: (785) 852-4664. (785) 852-4665-fax. EOE. sharonsprings@mail.oaktreeinn.com

## CMCI JOB OPENINGS

**Environmental Services:**  
ES Tech/Laundry Tech, Full-time & Part-time Supervisor, Full-time

**Food Service:**  
Diet Aide, Part-time - PSLC Registered Dietitian, Full-time Relief Cook/Diet Aide, Full-time - PSLC Relief Aide/Dishwasher, Part-time - PSLC

**Admissions:**  
Admissions Clerk, Full-time Communications Clerk, Full-time

**Nursing Service:**  
ER Tech, Part-time CNA, Full-time & Part-time - PSLC RN, Full-time & Part-time - CMC LPN/RN, Full-time & Part-time - PSLC

**Family Center for Health Care:**  
MA/LPN, Full-time

**Radiology:**  
MRI Technologist/Radiology Technologist, Full-time

Please Contact: Human Resources  
**CITIZENS MEDICAL CENTER, INC.**  
100 E. College Dr., Colby, KS 67701  
785-460-4877 EOE  
www.nwkshealthcare.com

Citizens Medical Center, Inc.

## Sponsored by

## The Goodland Star-News

1205 Main  
Goodland, Kan. 67735  
899-2338

|   |   |   |   |   |   |   |   |   |
|---|---|---|---|---|---|---|---|---|
| 2 | 3 | 9 | 8 | 5 | 1 | 4 | 7 | 6 |
| 7 | 6 | 1 | 4 | 9 | 2 | 5 | 3 | 8 |
| 8 | 4 | 5 | 7 | 6 | 3 | 9 | 2 | 1 |
| 1 | 9 | 3 | 5 | 2 | 6 | 7 | 8 | 4 |
| 4 | 2 | 7 | 3 | 8 | 9 | 6 | 1 | 5 |
| 6 | 5 | 8 | 1 | 7 | 4 | 3 | 9 | 2 |
| 9 | 7 | 2 | 6 | 4 | 8 | 1 | 5 | 3 |
| 3 | 8 | 6 | 9 | 1 | 5 | 2 | 4 | 7 |
| 5 | 1 | 4 | 2 | 3 | 7 | 8 | 6 | 9 |

## Sponsored by

**CLARK Crossing Co.**  
Books • Coffee • Art  
223 E. 10th, Goodland  
Phone: (785) 262-9517

"Oh, the Crosswords You'll Solve!"

|   |   |   |   |   |   |   |   |   |   |   |   |   |
|---|---|---|---|---|---|---|---|---|---|---|---|---|
| P | A | P | A | S | A | S | K | E | D | N | O | G |
| A | C | E | L | A | N | A | T | I | V | E | E |   |
| G | R | E | E | N | E | G | G | S | A | N | D | H |
| E | E | K |   | T | A | L | E | S |   | S | A | I |
|   |   |   | K | A | T | E |   | P | E | T |   |   |
| S | A | L | E |   | O | D | E |   | A | L | A | S |
| P | R | O | P | S |   | S | C | O | R | N |   | A |
| Y | E | R | T | L | E | T | H | E | T |   | T |   |
| O | N | E |   | Y | E | A | R | S |   | T | A | H |
| N | A | N | A |   | L | Y | E |   |   |   | N | E |
|   |   |   |   |   |   |   |   |   |   |   |   |   |
| P | I | A | N | O |   | T | H | R | E | E |   | I |
| H | O | R | T | O | N |   | H | E | A | R | S | A |
| I | W | O |   |   |   | L | E | A | N | S |   | T |
| L | A | D |   |   |   | S | W | I | S | S |   |   |

## City of Goodland-Code Enforcement Officer

The City of Goodland is accepting applications for a Code Enforcement Officer. The position requires an ability to work with the public; must possess a high school degree or its equivalent and a valid KS Drivers License. City provides a starting wage of \$13.00 an hour, very good benefit package, including vacation, sick leave, retirement program and more. Applications may be picked up at the City Office at 204 West 11th Street or at cityofgoodland.org. Position open until filled. EOE.

## The Northwest Kansas Educational Service Center

is accepting applications for the 2014-2015 school year.

- School Psychologist
- Head Start Aide (Decatur County)
- Head Start Para (Sherman County)
- Para-educators

Applications are available at [www.nkesc.org](http://www.nkesc.org) or 785-672-3125. Applications will be accepted until the positions are filled. \*NKESC is an EOE\*

## TRUCK DRIVER (short haul)

Only the best need apply! Great opportunity for fulltime non-hazardous driving position with growing company in Goodland. Our compensation package includes excellent benefits, most nights at home and all our equipment is well maintained. To be considered, candidates must have outstanding attitude, work ethic, and customer service skills. Also must possess Commercial Class A CDL w/tanker endorsement and clean driving record with 3+yrs exp. Send resume to: Agro Culture Liquid Fertilizer 106 East 19th Street, Goodland, KS 67735

## STREET & ALLEY LABORER 1 WATER DEPARTMENT LABORER

The City of Goodland is accepting applications for the position of Street & Alley Laborer I and Water Department Laborer. Successful applicants must possess a high school diploma or equivalent and a valid Kansas license. A valid Kansas CDL license, however, is not required at the time of employment. The City provides a starting wage of \$13.00 an hour, very good benefit package, including vacation, sick leave, retirement program and more. Applications may be picked up at the City Office, 204 W. 11th St., or the City Shop, 1724 Arcade, from 7 a.m. to 4 p.m. MT Monday-Friday. Applications taking until position is filled. The City of Goodland is an Equal Opportunity Employer.

## The Northwest Kansas Educational Service Center

is accepting applications for a Sherman County Head Start Paraprofessional for the 2014-2015 school year. Work site will be at the Goodland Head Start Center at Goodland.

**Qualifications:** High School Diploma or equivalent.

**Contact Person:** Shelby Hubert, Head Start Director, 785-672-3125 extension 160. Applications are available at [www.nkesc.org](http://www.nkesc.org) or 785-672-3125.

**Application Deadline:** Applications will be accepted until the position is filled.

## Full-time Activity Assistant

As an Activity Assistant, you will be responsible for involving residents in activity programming that meets their abilities, needs and interests.

**Additional responsibilities:** evaluating effectiveness of programming; keeping activity area free of hazards; following appropriate and adequate safety measures while on outings; cleaning/sanitizing supplies and equipment.

**Qualifications:** effective communication skills; be able to work with individuals of all ages; completion of activity training program or ability to complete this program; if assigned to Alzheimer's Unit, training in working with residents with Dementia; training for communication skills in working with visually/hearing impaired, aphasic residents or other specific disabilities, basic computer skills; ACTIVE CNALICENSE PREFERRED.

**CONTACT:**  
Kelly McIlroy at (785) 890-7515.  
[kmcilroy@good-sam.com](mailto:kmcilroy@good-sam.com)

## SPECIALIZING IN CUSTOMIZED STEEL AND POST FRAME BUILDINGS

### WE WILL BEAT ANY NORTHWEST KANSAS COMPETITOR'S PRICE ON A COMPARABLE PROJECT!!

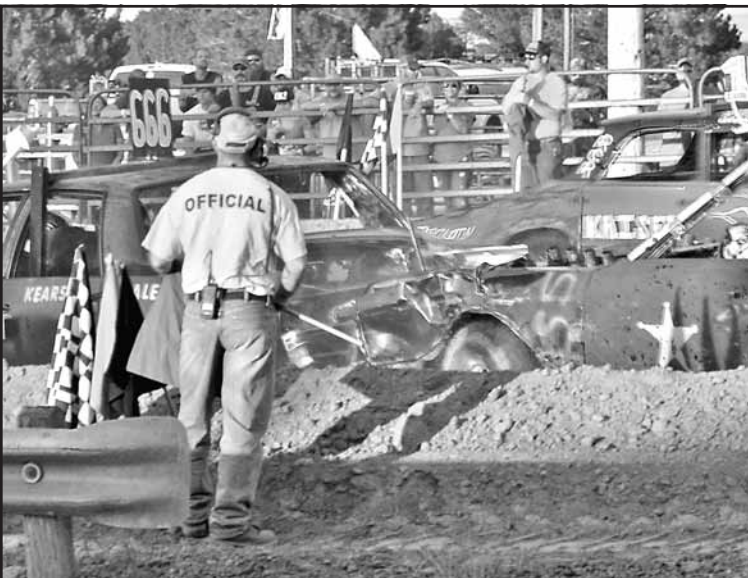
AFFORDABLE • SUSTAINABLE • LOW-MAINTENANCE • MULTI-PURPOSE

Vap Construction, Inc. offers numerous design styles, sizes, exterior finishes, accessories and colors for your Commercial, Agricultural or Residential Building.

**CONTACT US FOR A QUOTE TODAY! CALL: 866-492-1978**


Serving Kansas, Nebraska, Colorado and Wyoming • Fully insured with over 25 years of experience

For more information visit: [vapconstruction.com](http://vapconstruction.com) • 605 North 10th Street | Atwood, KS 67730



## Crash and bash at demo derby

The first evening event of this year's fair was the demolition derby, held Saturday at the large arena at the Sherman County Fairgrounds. The derby, held following the parade, is sponsored by the Goodland Kiwanis Club. Photos by Pat Schiefen  
The Goodland Star-News



### Sherman County Sheriff's Office

## 2014 Youth Academy

"Training empowers our youth to realize their dreams."

**Sherman County Sheriff's Office**  
**August 19-22, 2014**  
**8:30 a.m. to 12 p.m.**

Grades 7-8 students, maximum class of 15  
Deadline to sign up is August 11, 2014

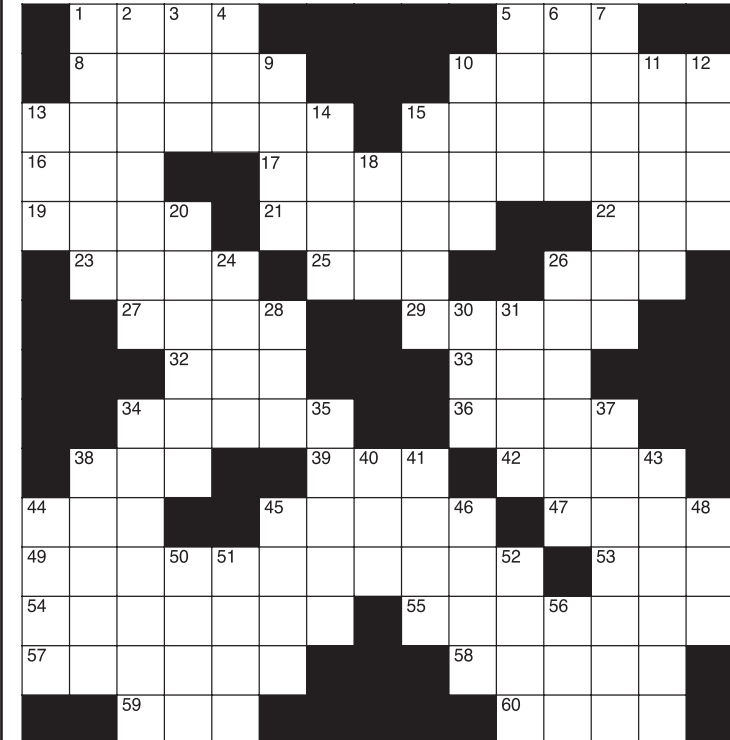
**NO CHARGE for this academy!**  
Applications available at Sherman County Sheriff's Office,  
or online at: [www.shermancountysheriff.com](http://www.shermancountysheriff.com)



## Great food, all day long! Stop in today!

Jct. of Hwys. 27 and 40  
Sharon Springs, Kansas  
Phone: 785-852-4664

## Crossword Puzzle



### CLUES ACROSS

1. Mimics  
5. Ed Murrow's home  
8. Semitic gods  
10. Print errors  
13. Shared  
15. Intestinal inflammation  
16. Word element meaning ear  
17. English romantic poet  
19. Proofreading symbol  
21. Marten pelt  
22. Brew  
23. Liquid body substances  
25. Born of  
26. Large primate  
27. Aba \_\_\_ Honeymoon  
29. Indian solder  
32. NYSE regulator  
33. Be incorrect  
34. Badger groups  
36. Gangster pistols  
38. Hearing receptor  
39. Gone by  
42. "Heir of Fire" author Sarah  
44. Short-term memory  
45. Egg-shaped nut palms  
47. Invests in little enterprises  
49. "\_\_\_\_\_ Daniel Webster"  
53. Busy, honey or quilting  
54. Supplies with air  
55. Repository  
57. Verbal approvals  
58. Make joyful  
59. 1/100 yen  
60. Lam \_\_\_\_: 12th hebrew

### letter (pl)

### CLUES DOWN

1. Diminishes  
2. Set free  
3. Consume  
4. Salem-Leckrone Airport  
5. Rowing team  
6. Gusto (Italian)  
7. Territory ruled by a Satrap  
9. Disseminates  
10. Other  
11. Appellation  
12. Arthur \_\_\_ Stadium (USTA)  
13. Seed container  
14. Paradoxical Zen question  
15. Runs disconnected  
18. Rainbow Effect (abbr.)  
20. Chalk remover  
24. Assist in some wrongdoing  
26. Main arterial vessels  
28. Unreturned serve  
30. Brain wave instrument  
31. Baby carriage  
34. Image recorders  
35. Indian frocks  
37. Jewish day of rest  
38. Earliest anesthetic  
40. Hair product  
41. So. Am. wood sorrels  
43. Blockades  
44. Pierce  
45. The class of birds  
46. Stake  
48. After B  
50. Comedian Letterman  
51. British School  
52. 1996 presidential candidate  
56. Radioactivity unit

The crossword puzzle brought to you by:



Books • Coffee • Art

223 E. 10th, Goodland, KS 67735 • Ph: (785) 262-9517  
Hours: Daily 8 a.m. to 4 p.m. • Fri. & Sat. 7-11 p.m.



### Best current Sherman County People

Best Financial planner \_\_\_\_\_  
Best cars sales person \_\_\_\_\_  
Best employer \_\_\_\_\_  
Best coach \_\_\_\_\_  
Best Physical Therapist \_\_\_\_\_  
Best Massage Therapist \_\_\_\_\_  
Best City employee \_\_\_\_\_  
Best County employee \_\_\_\_\_  
Best Pastor \_\_\_\_\_  
Best mechanic \_\_\_\_\_  
Best principal \_\_\_\_\_  
Best Chiropractor \_\_\_\_\_  
Best Investment Broker \_\_\_\_\_  
Best Attorney \_\_\_\_\_  
Best Secretary \_\_\_\_\_  
Best School Teacher \_\_\_\_\_  
Best Physician \_\_\_\_\_  
Best Ag Equipment \_\_\_\_\_  
Best Electrician \_\_\_\_\_  
Best Bartender \_\_\_\_\_  
Best Waiter/Waitress (one each)  
Waiter \_\_\_\_\_  
Employed at: \_\_\_\_\_  
Waitress \_\_\_\_\_  
Employed at: \_\_\_\_\_  
Best postal carrier \_\_\_\_\_  
Best Dentist \_\_\_\_\_  
Best Real Estate Broker \_\_\_\_\_  
Best Insurance Agent \_\_\_\_\_  
Best Pharmacist \_\_\_\_\_  
Best Auctioneer \_\_\_\_\_  
Best Radio Personality \_\_\_\_\_  
Best College Professor \_\_\_\_\_  
Best Nurse \_\_\_\_\_  
Best Veterinarian \_\_\_\_\_  
Best Public Official \_\_\_\_\_  
Best Sheriff's Deputy \_\_\_\_\_  
Best local artist \_\_\_\_\_  
Best police officer \_\_\_\_\_  
Best firefighter \_\_\_\_\_  
Best plumber \_\_\_\_\_

### Best Sherman Co. Food and Beverage

Best Pizza \_\_\_\_\_  
Best Burger \_\_\_\_\_  
Best Chicken \_\_\_\_\_  
Best Breakfast \_\_\_\_\_  
Best Steak \_\_\_\_\_  
Best coffee \_\_\_\_\_  
Best Mexican food \_\_\_\_\_  
Most Romantic Restaurant \_\_\_\_\_  
Best Chinese food \_\_\_\_\_  
Best restaurant to take out of town guests \_\_\_\_\_  
Best desserts \_\_\_\_\_  
Best sandwich \_\_\_\_\_  
Best place to get ice cream \_\_\_\_\_  
Best liquor store \_\_\_\_\_  
Best drive thru \_\_\_\_\_

### Best Sherman County Entertainment

Best place for first date \_\_\_\_\_  
Best local event \_\_\_\_\_  
Best place to dance \_\_\_\_\_  
Best local radio station \_\_\_\_\_  
Best live performance \_\_\_\_\_  
Best place to play Bingo \_\_\_\_\_  
Best teen hangout \_\_\_\_\_

### Best Around Sherman County

Best place to picnic \_\_\_\_\_  
Best place to run/walk \_\_\_\_\_  
Best place to meet singles \_\_\_\_\_  
Best tourist attraction \_\_\_\_\_  
Best church \_\_\_\_\_  
Best golf course \_\_\_\_\_  
Best park \_\_\_\_\_  
Best civic organization \_\_\_\_\_  
Best day trip \_\_\_\_\_  
Best outdoor activity \_\_\_\_\_  
Best place to view a sunset \_\_\_\_\_  
Best yard \_\_\_\_\_  
Best place for exercise classes \_\_\_\_\_

### Best Sherman Co. Goods and Services

Best daycare provider \_\_\_\_\_  
Best automotive repair \_\_\_\_\_  
Best auto body shop \_\_\_\_\_  
Best Gas/convenience store \_\_\_\_\_  
Best new/used car dealer \_\_\_\_\_  
Best auto parts \_\_\_\_\_  
Best home healthcare \_\_\_\_\_  
Best auto glass \_\_\_\_\_  
Best tire center \_\_\_\_\_  
Best nursing home \_\_\_\_\_  
Best assisted living \_\_\_\_\_  
Best beauty salon \_\_\_\_\_  
Best nail salon \_\_\_\_\_  
Best cell phone carrier \_\_\_\_\_  
Best butcher \_\_\_\_\_  
Best photographer \_\_\_\_\_  
Best tanning beds \_\_\_\_\_  
Best florist \_\_\_\_\_  
Best carpet cleaning \_\_\_\_\_  
Best ag supply store \_\_\_\_\_  
Best gift shop/collectables \_\_\_\_\_  
Best bank \_\_\_\_\_  
Best pharmacy/drug store \_\_\_\_\_  
Best bar \_\_\_\_\_  
Best lumber yard \_\_\_\_\_  
Best heating & cooling \_\_\_\_\_  
Best eye-ware \_\_\_\_\_  
Best internet/cable provider \_\_\_\_\_  
Best motel/hotel \_\_\_\_\_  
Best hardware store \_\_\_\_\_  
Best furniture store \_\_\_\_\_  
Best appliance store \_\_\_\_\_  
Best towing service \_\_\_\_\_  
Best barber \_\_\_\_\_  
Best "big rig" shop \_\_\_\_\_  
Best funeral home \_\_\_\_\_

Return ballots to our office, by mail, or email.  
EMAIL: [jcorbin@nwks.com](mailto:jcorbin@nwks.com)

The  
Goodland Star-News

1205 Main, Goodland, KS 67735  
Phone: (785) 899-2338 • Fax: (785) 899-6186

NAME: \_\_\_\_\_

Contact number: \_\_\_\_\_

Contact email: \_\_\_\_\_

Contest rules: Must be current business/person  
IN SHERMAN COUNTY. Only one answer per  
"Best of." Try to fill out survey completely. Name  
and phone number must be included (box to the  
right). One ballot per person.