

**upcoming events**

**Camp starts next week**

The grade school basketball camp for girls entering third, fourth and fifth grades will be from 10 a.m. to noon, July 21-25, in the Mustang gym. Cost is \$5 for insurance and \$10 for a T-shirt. For information, call Coach Andy Scheopner at (785) 821-0299.

**Weather night at the museum**

The National Weather Service and the High Plains Museum will hold a free educational Weather Night from 6:30 to 8 p.m. Monday, July 21, at the museum. For more information, contact the Goodland NWS at 785-899-7119 or e-mail at michael.kochasic@noaa.gov.

**weather**

**58°**  
10 a.m.  
Thursday

**Today**  
• Sunset, 8:11 p.m.  
**Saturday**  
• Sunrise, 5:36 a.m.  
• Sunset, 8:10 p.m.

**Midday Conditions**  
• Soil temperature 68 degrees  
• Humidity 97 percent  
• Sky overcast with fog and drizzle  
• Winds southeast 8 mph  
• Barometer 30.12 inches and raised  
• Record High today 106° (1936)  
• Record Low today 50° (1972)

**Last 24 Hours\***  
High Wednesday 62°  
Low Wednesday 56°  
Precipitation .01  
This month 1.42  
Year to date 10.49  
Below Normal 1.02 inches

**The Topside Forecast**  
Today: Partly sunny with areas of fog before 8 a.m., a high near 84, a 20 percent chance of showers and thunderstorms before 7 p.m., winds out of the south at 10 to 30 mph and a low around 62. Saturday: Sunny with a 30 percent chance of showers and thunderstorms after 5 p.m., a high near 91, winds out of the south at 10-15 mph and a low around 65.

**Extended Forecast**  
Sunday and Monday: Mostly sunny with a 20 percent chance of showers and thunderstorms, highs near 94-96 and a low around 67. (National Weather Service)

brought to you by:

**Hitchcock INC.**  
of GOODLAND VALLEY  
The Leader in Precision Irrigation  
328 W. Hwy. 24, Goodland  
Phone: (785) 899-5628

**markets**

**10 a.m.**  
Wheat — \$6.23 bushel  
Posted county price — \$6.11  
Corn — \$4.02 bushel  
Posted county price — \$3.78  
Milo — \$3.49 bushel  
Soybeans — \$11.73 bushel  
Posted county price — \$12.15  
Millet — no bid  
Sunflowers  
Oil current crop — \$18 cwt.  
Confection — no bid  
Pinto beans — \$32 (new crop)  
(Markets by Scouler Grain, Sun Opta, Frontier Ag and 21st Century Bean. These may not be closing figures.)



**Feedback sought on Black Hills rate increase**

By Kevin Bottrell  
kbottrell@nwkans.com

Representatives from the Kansas Corporation Commission, Black Hills Energy and the Citizen's Utility Ratepayer Board discussed a proposed rate increase by Black Hills at a public hearing on July 10.

The hearing was held at the Robert J. Dole Institute of Politics at the University of Kansas in Lawrence, with three remote locations — Wichita, Garden City and Goodland — videoconferencing in. The hearing was in part to get public feedback entered into the official record. Members of the public were allowed time to ask questions and make statements.

The public comment period is open until Sept. 22. Comments on Docket No. 14-BHCG-502-RTS can be sent to the Corporation Commission, Office of Public Affairs and Consumer Protection, 1500 SW Arrowhead Road, Topeka, Kan., 66604, or e-mailed to public.affairs@kcc.ks.gov, or called in to (800) 662-0027.

Samuel Feather, litigation counsel for the Corporation Commission, said the commission is made up of three people appointed by the governor. It regulates several industries such as utilities and motor carriers.

"The law requires that it regulate utilities because they operate in low-competition environments," he said.

When a rate change is proposed, he said, the commission considers each party involved as well as the historical trends and the state of the economy. They weigh evidence and make a determination, something that can be appealed to the Kansas courts.

Todd Jacobs, general manager of Black Hills Energy, said any time a rate increase is proposed, it is care-

See RATE, Page 5

*Cold Water Challenge*



Sherman County Sheriff Burton Pianalto got ice water dumped on him by local kids Adalai Amthor, Aaron Owens and their friends on Wednesday. Pianalto had accepted the Cold Water Challenge from Sheridan County Sheriff Brian Fenner. Law enforcement officers have been challenging each other in recognition of the

Officer Down Memorial. Pianalto challenged Kiowa City Police Chief Steve Johnson, Stanton County Sheriff Cody Morris, Sumner County Sheriff Darren Chambers, Shawnee County Sheriff Herman Jones and Kit Carson County Deputy Travis Be Iden.

Photo by Kevin Bottrell/The Goodland Star-News

**Neighborhood Revitalization talks continue at meeting**

By Kevin Bottrell  
kbottrell@nwkans.com

The Goodland and Sherman County commissioners met for another round of talks on the Neighborhood Revitalization Program on Wednesday at the county courthouse.

County Commissioner Ken Klemm said the county called a meeting Monday of all the county entities who are affected by the tax rebates, such as Goodland Regional Medical Center and The Goodland Public Library.

"We didn't want to speak for them," he said. "We wanted to get their opinions."

Because it has to give back some of the tax

money it takes in, Klemm said, those entities have to make do with less revenue than is budgeted for. County Commissioner Steve Evert said this particularly affects the library, since it receives tax money from both the city and county.

"It's something we need to work out so they can maintain services," he said.

Klemm said the consensus is that the entities have concerns, but agree with economic development efforts.

The county had revised the plan based on the agreements at the last meeting in June. This included a cap on the amount of in-

creased appraised valuation that can qualify for the plan. The county proposed a cap of \$250,000 for new construction and \$350,000 for tear-downs and rebuilds. Another change is that commercial projects that drop below the job creation requirements will not be kicked out of the program, but can qualify under a lesser benefits schedule.

The county also added a section to the plan, which requires that each August the county publish a list of all Neighborhood Revitalization Program participants with the amount of their rebate for that year.

Klemm said several points of contention

still remain. At the previous meeting, it was agreed that the residential cap was needed, but the amount had not been agreed upon. Other points include the amount of the tax rebate and the metric used to measure the success of the plan.

The county proposed shortening the time amount of time a residential project gets the rebate to five years, but making the rebate amount 90 percent every year.

City Commissioner John Garcia suggested a compromise of seven years, with the rebate

See TALKS, Page 5

*Kanorado Senior Center holds auction*



Auctioneer Matt Phillipp took bids during the Kanorado Senior Center Auction on Saturday on Main Street in Kanorado. The center auctioned off dozens of items donated by local people including computers, dishes, golf clubs, lawn mowers,

gift certificates and more. All the proceeds go to help support the senior center. Terry Richardson of Homestead Realty and Auction conducted the auction.

Photo by Sheila Smith/The Goodland Star-News

**NASCAR greets to race in Colby**

By John Schmidt

Two NASCAR drivers, Kenny Wallace and Kenny Schrader, will be behind the wheel of IMCA Modified cars Sunday as Thomas County Speedway holds one of the biggest races in northwest Kansas.

S&W Supply and the Quality Inn of Colby are sponsoring the drivers' appearance. Also rolling into town will be the BST Racing Series, bringing IMCA Modifieds, Sport Mods and Stock Cars. The three BST classes and the IMCA Hobby Stocks will be racing for substantially larger purses as well, and drivers are expected from six states.

Schrader is one of the most widely known drivers in the sport. He has been racing for over 40 years and drove in NASCAR's top three series for over 30 years before he retired last November at Homestead Speedway in Miami.

Wallace is making a rare trip this

See NASCAR, Page 5

obituaries

Marvin Elmer Adams

Marvin Elmer Adams, 90, Wide Field, Colo., brother of the late Bertha Parish, died July 10, 2014. He was born on Nov. 28, 1923, to Charles W. Adams and Anna Jewell Allen in Goodland.

Graveside service will be at 11 a.m. on Wednesday, July 16,

2014, at the Goodland Cemetery with Bateman Funeral Home, 211 E. 11th, Goodland handling the service.

Arrangements were handled by Dove-Witt Family Mortuary, 6630 South U.S. Highway 85-87, Fountain, Colo.

Kathi Jardine

Kathi Jardine, 64, Goodland volunteer at the Goodland Churches Thrift Shop, died Wednesday, July 9, 2014.

She was born on March 17, 1950, to Roy and Jacqueline Sledge in Denver.

Ms. Jardine was a cosmetologist and a social worker.

She was a member of the Emmanuel Lutheran Church in Goodland.

Preceding her in death were her parents and her husband James. J. Linehan.

Survivors include her daughter Shyla (Chris) Rohde of Lakewood, Colo., and two grandchildren.

There are no services planned at this time but memorials may be sent to Bateman Funeral Home, Box 278, Goodland, Kan.

Weeds are rapidly growing in stubble

By Jeanne Falk Jones

Kansas State Agronomist

Due to rainfall across our area, weeds are rapidly growing in wheat stubble. It is

a good idea to control these weeds now, before they set seed. It is also a good time to control them with the recent rains because they are actively growing and will rapidly take up the herbicides.

Weeds growing now in wheat stubble fields, without crop competition, set ample seed -- which will be likely to cause a problem in following crops. It is especially important to prevent seed production from happening on fields that will be planted to crops with limited options for weed control, such as grain sorghum, sunflower or annual forages. It is especially difficult to control broadleaf weeds in sunflower and grassy weeds in sorghum that emerge after crop emergence. Preventing weed seed production ahead of these crops is essential. Seed of some weed species can remain viable for several years, so allowing weeds to produce seed can create weed problems for multiple years.

In addition, as we progress to the end of July and early August, the Kochia and Russian thistle will begin to flower. This is because they are sensitive to the day length and the shortening days trigger flowering. It is important to control these weeds before they begin to produce seeds.

If the field will be planted to Roundup Ready corn or soybeans, producers may decide they can just wait and control any weed and grass seed that form now and emerge next season with a post emergence application of glyphosate in the corn or soybeans. However, with the concerns over the development of glyphosate-resistant weeds, Kochia, Palmer amaranth, and water hemp, it would be far better to control these weeds now in wheat stubble. That way, other herbicides with a different mode of action can be tank-mixed with glyphosate to ensure adequate control.

Producers should control weeds in wheat stubble fields by applying the full labeled rate of glyphosate with the proper rate of ammonium

sulfate additive. As mentioned, it is also a good idea to add 2,4-D or dicamba (unless there is cotton or other susceptible crops in the area) to the glyphosate. Do not apply the growth regulator herbicides around cotton. Tank mixes of glyphosate and either 2,4-D or dicamba will help control weeds that are difficult to control with glyphosate alone, and will help reduce the chances of developing glyphosate-tolerant weed populations.

Often dicamba or 2,4-D tank mixes with glyphosate may not perform well under the drier conditions of western Kansas, especially on Kochia and Russian thistle; however this year with the improved moisture conditions, we may find glyphosate tank mixes will work well. If drought and heat stress set in, however, utilizing Gramoxone with atrazine (atrazine is synergistic with Gramoxone) has been a more effective treatment than glyphosate/dicamba or glyphosate/2,4-D.

Several have asked about the addition of atrazine for residual weed control in fallow. Although atrazine provides residual control of weeds, it is best applied later in the fall. At this time of year, atrazine residual is quite short and will not provide adequate control of fall emerged weeds/winter annuals. An application of atrazine needs to be made in the fall (mid October through November), depending on the weeds being targeted. Also, keep in mind that atrazine antagonizes glyphosate -- just the opposite of the synergistic effect of atrazine and Gramoxone. Do not apply atrazine with reduced rates of glyphosate.

If you have any questions, please contact the Kansas State Research and Extension Office or the Kansas State Experiment Station in Colby. You can also find information on Facebook at Kansas State Sunflower District Agronomy or on Twitter at @cropswithJeanne. Check out the Kansas State Sunflower District website at [www.sunflower.ksu.edu](http://www.sunflower.ksu.edu) and on the 'Agronomy' tab.

card shower

A card shower has been requested for former resident Maxine Zollinger. She will be celebrating her 75th birthday on July 21, 2014. Cards may be sent to her at 1913 N. Monroe Street, Apt. B, Hutchinson, Kan. 67502-4145.

student news

Nicole D. Hendrich of Goodland was named to the Wichita State University's dean's honor roll for spring 2014. The student must be enrolled in 12 credit hours and earn at least a 3.5 grade point average.

Matthew L. Belshe of Goodland received his Bachelor of Nursing, Cum Laude from Wichita State University in the spring 2014.

genesis and salvation army

Genesis and Salvation Army are available year round to help those in need. Call (785) 890-2299 to speak to a volunteer.

activities

Tours of the 1907 Victorian House at 202 W. 13th are from 1 to 5 p.m. Wednesday through Monday. Closed on Tuesday.

The High Plains Museum, 1717 Cherry Ave., is open from 9 a.m. to 5 p.m. Monday, Wednesday through Saturday and from 1 to 5 p.m. Sunday. Closed Tuesdays.

The Carnegie Arts Center is open from 10 a.m. to 5 p.m. Tuesday through Saturday, 1 to 4 p.m. on Sunday and 1 to 6 p.m. on Monday at 120 W. 12th. The center is always in need of hosts and hostesses on Sundays. New monthly exhibits and you are invited to visit the gift shop.

The Goodland Public Library is open from 10 a.m. to 8 p.m. Monday through Thursday and from 10 a.m. to 5 p.m. Friday and Saturday. For information call (785) 899-5461 or stop by the library.

Big Brothers/Big Sisters of Sherman County is seeking mentors and children to mentor. Call 890-3665.

The Good Sam Family Support Council meets at 7 p.m. the second Thursday of every month at the Goodland Elks Lodge. Meetings are open to all interested people. For information call 890-3117 or 890-5936.

Breast Cancer Support Group meets at 5:30 p.m. the second Monday of the month. Any woman with cancer is welcome. Call Norma at 890-6629 for more information.

The Goodland Activities Center has the daily activities. For information call 890-7242. Memberships options for everyone including day passes for \$5. Visit [goodlandgac.com](http://goodlandgac.com) or stop by 808 Main. The hours are 5:30 a.m. to 8 p.m. on Monday through Thursday, Friday 5:30 a.m. to 6 p.m., Saturday 10 a.m. to 6 p.m. and Sunday 1 to 5 p.m. Aerobics are at 5:30 a.m. on Monday and

the calendar

calendar

There will be a Goodland Grade School Basketball camp for third, fourth and fifth graders from 10 a.m. to noon from Monday to Friday, July 25, at the Mustang Gym at Max Jones Fieldhouse. Cost is \$5 for insurance and \$10 if you want a t shirt. For information call Coach Andy Scheopner at (785) 821-0299.

There will be a Goodland community blood drive on Tuesday, July 29, from noon to 6 p.m. at the Goodland United Methodist Church Fellowship Hall. The goal is to collect 76 pints.

A free sack lunch will be provided to kids at 12:30 p.m. every Wednesday before the summer

matinee at The Sherman Theatre. A movie pass is not required to get a sack lunch.

Prairie Land Food distribution is 1 to 2 p.m. Saturday, July 26, at Cat's TnT, 115 E. 9th, or at the Bernadine Johnson residence, located at 704 Walnut. For information call 899-2338, 821-1275, 890-2287, 821-1827, 890-3793 or 899-4278 or order online at [www.prairielandfood.com](http://www.prairielandfood.com).

Summer matinees will be every two weeks at 1:30 p.m. on Wednesdays at the Sherman Theatre, 1203 Main. The movie on Wednesday will be "Shrek Forever After" (PG).

The Kids Cooking Class is held on the second Wednesday of each

month from 3:45 to 5:15 p.m. at the 4-H Building. This class is open for second to fifth graders. For information call 890-4880.

senior menu

Today: Chicken salad sandwich, German cucumbers, Mandarin oranges, bun and cookie. Monday: Chili dog with cheese, Italian blend vegetables, bun and plums. Tuesday: Lasagna, corn, tossed salad with tomatoes, garlic bread and hot cinnamon apple slices. Wednesday: Turkey, sweet potatoes, green beans, bread and orange pineapple salad. Thursday: Cook's choice entree, broccoli salad, peaches, bread and pudding. Friday: Taco salad, watermelon, chips and brownie.

Wednesday. Insanity class meets at 5:30 a.m. on Monday, Tuesday, Wednesday, Thursday, Friday and Saturday. Taekwondo with Wayne Luckert call for times and dates.

Weight Watchers meets at 5:30 p.m. for weigh in and 6 p.m. for the meeting every Tuesday at the Harvest Evangelical Free Church, 521 E. Hwy. 24. For information call (785) 890-6423.

Goodland Alcoholics Anonymous, 1013 Center. If you drink alcohol, that's your business. If you want to stop, we can help. Call 821-3826 or 728-7491.

Goodland Al-Anon Family Group meets at 6 p.m. on Fridays at First Christian Church, 711 Arcade. For information call Alice or Marilyn at 890-5914 or 821-2862. They also meet at Mondays at 6:30 p.m.

The "Freedom Today" group of Narcotics Anonymous meets at 8 p.m. Tuesdays, 8 p.m. Fridays and 8 p.m. on Sundays at 1013 Center. Call 890-8369.

Bird City Alcoholics Anonymous group meets at 6:30 p.m. (Mountain Time) on Fridays at the Senior Center on 4th Street.

Narcotics Anonymous meets at 6:30 (Mountain Time) on Tuesdays at the Senior Center. Call (785) 734-2734 for more information.

thrift store

The Goodland Churches Thrift Shop, 1002 Main, is open from 10 a.m. to 5 p.m. on Monday through Friday. Donations welcome. The daily specials are 50 percent off men's department on Monday, 50 percent off housewares, furniture, electronics and crafts on Tuesday, 10 cent books on Wednesday, 50 percent off children's department on Thursday and 50 percent of ladies' department on Friday. For information call 890-2007.

health department

The Sherman County Health De-

partment at 1622 Broadway is open from 8 a.m. to noon and 1 to 5 p.m. Monday through Friday.

Blood pressures; infants', children's and adults' immunizations; health assessments for Kan Be Healthy, daycare and school entry; fasting blood sugar and hemoglobin; and family planning available by appointment. Sharps containers are available for a fee. WIC program available. Call 890-4888 or go to [www.sherman.kansas.com](http://www.sherman.kansas.com).

If you have questions, concerns or complaints about child care, call the health department.

Water Testing — The Northwest Local Environmental Protection Group does well evaluations, including testing for bacteria and nitrates. To schedule an evaluation or discuss environmental concerns, call the Health Department at 890-4888.

hospital volunteers

Gift shop hours are 9 a.m. to noon and 1 to 4 p.m.; a.m. and p.m. volunteers are in the gift shop.

early head start

Early Head Start is a state funded program for income eligible families with prenatal mothers and children up to age three. Families participate in a variety of educational activities and receive free medical and dental care.

Services include special needs of children with disabilities. If you have a family member with a special problem, such as drug or alcohol abuse, job loss or other family crisis, your family can qualify. Call 785-672-3125, ext. 187.

preschool

Sherman County Head Start is a free preschool for eligible 3 and 4 year olds. The federally funded program is targeted to families who meet certain economic guidelines and provides hearing, vision, dental and educational screenings. Nutri-

tious meals are served, and parents are encouraged to get involved in their children's education. For information call 890-2552.

mops

MOPS (Mothers of Preschoolers) meets the first Monday of every month October thru May. Meeting time: 6 p.m. -7:30 p.m. at the Harvest Evangelical Free Church; 521 E Highway 24; Goodland. For more information email [goodlandmops@gmail.com](mailto:goodlandmops@gmail.com) or call (785) 890-6423.

crimestoppers

If you have information about any crime, call the Goodland Area Crime Stoppers "Look Line" at 899-5665. Your call will be confidential and you will not be asked your name. If the information results in the arrest and/or conviction of those involved, you could be eligible for a reward of up to \$1,000. Goodland Area Crime Stoppers is a nonprofit organization formed by citizens against crime.

The police department can also be called at 890-4570.

family shelter

The Northwest Kansas Domestic and Sexual Violence Services provides help day or night to victims of domestic violence and sexual assault. For information or help, call (800) 794-4624. In the Colby area, call (785) 443-1130.

animal shelter

Lost a pet? Call 890-4575 or go to [www.petfinder.com](http://www.petfinder.com) and be sure to enter the Goodland zip code 67735. You can also call the Goodland Police Department at 890-4570 or Northwest Kansas Animal Shelter at 899-4398. Interested in adopting a pet? Call the animal shelter or go to the website [www.nwkasgoodland.webs.com](http://www.nwkasgoodland.webs.com).

For personalized dog/cat tags for \$12 each email [LafieLd13@aol.com](mailto:LafieLd13@aol.com)

Juvenile offenders get help with school

The hardest part of high school wasn't earning a 3.5 grade average, securing a stellar ACT score or even graduating early for 17-year-old Alexia. The hardest part was moving 26 times during her high school career as a juvenile offender.

Sentenced as a juvenile for offenses she committed as 13-year-old, Alexia continually switched schools due to changes in her custody and treatment that included movements to home placements, residential care facilities and detention centers throughout Kansas.

"At every placement, every time I moved, I presented myself to the school's administrators and said, 'I am here to go to school,'" said Alexia, whose name has been changed to protect her privacy. "But it was hard. Each school had different kinds of teaching, different requirements and different expectations."

Multiple residence changes make up just one of the risk factors that contribute to why juvenile offenders like Alexia falter in school. How-

ever, for the first time, a program aimed at responding to this issue was made available to the Kansas Department of Corrections juvenile services division this past spring.

iGRAD, a Keys for Networking program, helps Kansas youth 15 and older track placement history and secure records in an online database to ease communication between schools and providers and deliver interventions for risk factors that create barriers to educational success.

The ability to be part of iGRAD gives juveniles in custody access to an invaluable tool, said Jane Adams, executive director of Keys for Networking.

"Youth in custody are moved for a variety of reasons," she said. "When youth move, they lose their friends, they lose their place in whatever course they were enrolled in and each time the curriculum and teaching methods change. In addition, time is lost and schools are reluctant -- even within the same

school district -- to offer credit when the student moves in the middle of the semester."

Confidentiality issues also can cause problems for the student because teachers are not informed of where the student has moved or why, Adams said. When they disappear, school records often do not move with the student or in a timely fashion. Yet, the new school where the student is enrolling is often hesitant to believe the juvenile who can end up getting enrolled in a course the student has already taken.

"One student took English III three times because each time he moved he could not convince the new school he'd already taken the course," Adams said. "He ended up not graduating on time because he still had to complete English IV."

"Though most of these students -- as many as half -- also have special education needs, these needs are often not taken into account by the schools," Adams said.

Individualized education plans,

written statements of the educational program designed to meet a student's individual needs, get lost in school transfers or the students are in the district for such a short period that the school did not have time to implement the plans or even enough time to assess the student for specialized needs, Adams said.

"Students do not receive the services they need and that are federally and state mandated," Adams said. "Moreover, they are expelled or suspended from school without consideration of their disability."

Through her involvement with GEAR UP and iGRAD, Alexis, who had an ACT score of 29, said she was able to better focus on her studies and that resulted in her graduating in December 2013. She has enrolled in summer school at the University of Kansas where she plans to pursue degrees in theater and vocal music.

"GEAR UP was the only program that ever emphasized post-secondary education and careers," said Alexis.

Classifieds work!  
899-2338

Specials for the week July 18-24

Drinks included. Dine-in or carry out!

- Friday, July 18: Fish Sandwich
- Saturday, July 19: Hot Chicken Fried Chicken
- Sunday, July 20: BBQ Ribs
- Monday, July 21: Meatloaf
- Tuesday, July 22: Hot Hamburger
- Wednesday, July 23: Open-faced Roast Beef Sand.
- Thursday, July 24: Spaghetti



Jct. of Hwys. 27 and 40, Sharon Springs, Kansas • Phone: 785-852-4664

Thank you!

The family of Betty Short Webb sincerely thanks those who took time to visit her when she received her Meals on Wheels, saw that she had a ride to and from church, and any other courtesies extended to her. Thanks to all those at the Good Samaritan Center for their gentle and loving ways.

We sincerely appreciated the cards, flowers and memorials received in Betty's passing. Thanks to Koons Chapel, Pastor Lew Van Der Wege and the ladies of Circle Three of the Methodist Church, for all the love and concern for the family.

-Sincerely, Dick and Sarah Short

The Goodland Star-News

SUBSCRIBER

Roberta Rehor

You receive two free passes to see:

HOW TO TRAIN YOUR DRAGON 2 3D (PG)

Clip and bring to the show. Non Transferable



1203 Main Avenue • (785) 899-6103

# Fatal infection reported in state

Kansas Department of Health and Environment has been notified of a fatal case of primary amoebic meningoencephalitis caused by *Naegleria fowleri*, a free-living amoeba found in freshwater, in a resident of Johnson County. The investigation indicates there were several potential fresh water exposures in Kansas, so the actual source of the infection cannot be determined.

Initial laboratory examination has identified the presence of *Naegleria fowleri* in a specimen from the patient, and additional laboratory testing by the U.S. Centers for Disease Control and Prevention is pending. This is the second known case of primary amoebic meningoencephalitis caused by *Naegleria fowleri* in Kansas. The first case occurred in 2011.

*Naegleria fowleri* can be found in freshwater environments around the world, but infection causing primary amoebic meningoencephalitis is extremely rare. From 1962 to 2013, there have been 132 cases reported in the United States, with 34 of those cases occurring from 2004 to 2013. Most cases have occurred in southern-tier states. The risk of infection is very low, but increases during the summer months when water temperatures rise and more people participate in water-related activities. The infection typically occurs when the amoeba enters the body through the nose while the person is swimming underwater or diving and travels to the brain.

"We are very saddened to learn of this unfortunate circumstance, and our thoughts and prayers are with the family and friends during this difficult time," said Robert Moser,

MD, Kansas Department of Health and Environment secretary and state health officer. "It is important for the public to know that infections like these are extremely rare and there are precautions one can take to lower their risk - such as nose plugs."

Symptoms usually appear about five days after infection, but can range between one and seven days, and include headache, fever, nausea and vomiting, stiff neck, confusion, lack of attention to people and surroundings, loss of balance and bodily control, seizures, and hallucinations. This infection cannot be spread from person to person or contracted from a properly maintained swimming pool.

Though the risk of infection is extremely low, the following precautions might decrease the possibility of infection:

Hold your nose shut, use nose clips, or keep your head above water when taking part in water-related activities in bodies of warm freshwater.

Avoid putting your head under the water in hot springs and other untreated thermal waters.

Avoid water-related activities in warm freshwater during periods of high water temperature.

Avoid digging in, or stirring up, the sediment while taking part in water-related activities in shallow, warm freshwater areas.

There is no known way to control the occurrence of *Naegleria fowleri* in freshwater lakes and rivers.

For more information on healthy swimming visit the Centers for Disease Control website at <http://www.cdc.gov/healthyswimming/>.

# Vacation Bible school



Preschoolers played toe tag with the help of adults at the Goodland United Methodist Church's Vacation Bible School on Tuesday night. The church was having their vacation Bible school until Thursday. The school was for kids up to fifth grade. Photo by Pat Schiefen/The Goodland Star-News

# Aviation expo to be in September

After a successful inaugural event last year, state aviation officials are gearing up and partnering with the Kansas Commission on Aerospace Education to host the 2nd Annual Kansas Aviation Expo, Sept. 22-26.

This year's Expo will feature a week's worth of events, including the Fly Kansas Air Tour, two around-the-world pilots and business seminars. Last year's inaugural event featured several leading industry speakers and left attendees requesting an annual event.

"This year our theme will be 'where dreams comes true' because there is something for everyone when it comes to aviation," said Jesse R. Romo, Director of Aviation for the Kansas Department of Transportation. "One of our goals this year is to reach out and engage as many school kids as possible to encourage them to pursue their dreams and consider a career in aviation."

During the air tour, pilots will fly their aircraft throughout the state carrying the message that aviation is for everyone. For three days, three stops a day, the group will barnstorm in aircraft that range from a vintage Stearman to a modern Cessna 182. Each stop will highlight a different aspect of Kansas aviation and draw in several local school kids. Day 1 kicks off Sept. 22 in Wellington, moves to Hutchinson for lunch and ends in Dodge City with an evening event. Day 2 begins in Scott City, continues to Salina and ends in Topeka. The third day will go through Pittsburg and Independence before ending in Benton.

Following the air tour on Sept.

25, Barrington Irving, the youngest person to fly around the world solo, will bring his Flying Classroom to Wichita and demonstrate to high school students how STEM (Science, Technology, Engineering and Mathematics) is used in aviation. The Flying Classroom event will include a career fair at which hundreds of high school students will learn about all the options aviation has to offer.

On the evening of Sept. 25, Amelia Rose Earhart will talk about her around-the-world flying trip and her Fly With Amelia Foundation that helps high school girls learn how to fly. Amelia Rose, who is not related to her namesake, recreated the route the earlier Amelia Mary Earhart had charted for her ill-fated 1937 attempt to fly around the world.

The schedule for Friday, Sept. 26, will include speakers from the FAA, TSA, Aircraft Owners and Pilots Association and more.

Gov. Sam Brownback said the week's events are valuable to highlight the importance of aviation to the Kansas economy and to introduce young people to aviation and possible careers.

"Kansas is proud of its history in aviation," said Gov. Brownback. "The popularity of this event highlights the importance of aviation and the contributions Kansas and Kansans continue to make in this critical industry."

For more information on the event, go to the Kansas Commission on Aerospace Education website at [www.flykansas.org/](http://www.flykansas.org/) or visit the event Facebook page at [www.facebook.com/KansasAviationExpo](http://www.facebook.com/KansasAviationExpo).

# Tax scams don't stop after April

You filed your tax return and got your refund, but your phone's caller ID says Internal Revenue Service or you got an e-mail from the IRS. Did you make a mistake on your taxes or is it a scam?

"If you get an unexpected phone call or e-mail from someone claiming to be from the IRS, you should assume it's a scam," said IRS spokesman Michael Devine. "The IRS will mail a written notification of any tax problem, not initiate contact by phone or email."

According to the IRS, scam callers are frequently insulting or hostile - to scare their

potential victims. Some demand payment on a pre-paid debit card or by wire transfer.

"If you answer an unexpected phone call from someone claiming to be from the IRS, ask for a call back number and an employee badge number. Then call the IRS at (800) 829-1040 to see if the IRS is really trying to contact you," said Devine.

What if you get an e-mail from the IRS instructing you to open an attachment or visit a web site?

The IRS says if you get a 'phishing' email: Don't reply, open any attachments or click

on any links. Do forward the email to [phishing@irs.gov](mailto:phishing@irs.gov). Then delete it.

"The IRS receives thousands of reports every year from taxpayers who receive emails out-of-the-blue claiming to be from the IRS," said Devine. "If you open the attachment, a virus might infect your computer system and criminals may be able to steal your personal information or send more e-mails using your account."

# Safety tips for families during camping

While the preparations for a family camping or hiking trip usually include a review of the necessary gear, Safe Kids Kansas recommends parents also review safety guidelines with their children.

"Going camping or hiking can be wonderful activities for children and families but it's also a time when kids are in an environment they're not used to," says Cherie Sage, coordinator of Safe Kids Kansas. "It's really about preparing kids so they know what to do in different situations like sitting near a campfire or swimming in open bodies of water. Serious injuries can be completely avoided by following a few simple tips."

Safe Kids Kansas recommends

these five tips to stay safe while camping.

1. Be safe around the campfire. Actively supervise children near a campfire or portable stove. Follow posted rules about campfires, and do not light fires in windy or excessively dry conditions. Keep a bucket of water and a shovel near a fire and extinguish the fire completely before going to sleep or leaving the campsite.

2. Be prepared for emergencies. Keep first aid supplies and emergency phone numbers handy and know where the nearest phone is located. Cell phones might not work in remote areas.

3. Protect against sudden weather change. Dress children in layers of

clothing to help prevent heat-related illness and hypothermia. A child's body temperature changes faster than an adult's does. Bring waterproof clothes to protect against rain or wind.

4. Actively supervise around water. Never leave children unattended around water. We know it sounds strict, but there is no room for compromise on this one.

5. Wear a life jacket. Always have your children wear properly fitting life jackets approved by the U.S. Coast Guard while on boats, around open bodies of water or when participating in water sports.

To learn more information, visit

the safety tips section on the Safe Kids website at [www.safekids.org](http://www.safekids.org), or call (785) 296-1223 or (785) 296-0351.

## corrections

The Goodland Star-News will correct any mistake or misunderstanding in a news story. Please call our office at (785) 899-2338 to report errors. We believe that news should be fair and factual. We want to keep an accurate record and appreciate you calling to our attention any failure to live up to this standard.

## County seeking board members

The Sherman County Commissioners are requesting Sherman County citizens interested in being appointed to the Goodland Regional Medical Center Hospital Board to send a letter outlining their interest in serving the community in this important capacity. Please include pertinent qualifications or attributes that should be considered. Mail or deliver to: Sherman County Commissioners, 813 Broadway, Room 102, Goodland KS 67735. Must be submitted by August 8th at 5:00 PM.

## There's an APP for that!



with David Fischer and George Seamon (Northwest Kansas Library System)  
**Tuesday, July 22 at 6 p.m.**  
**Goodland Public Library**

NWKLS staff will be going over new apps for Kindles, Nooks and iPads.

Not understanding how to do something on your handheld device? Come and we will ask the techs how to accomplish your task! Bring your handheld device and all id's and passwords for your device.

**When experience counts you can count on Rick Billinger.**



- 2 years in the House of Representatives
- 30 plus years in commercial and retail business
- 27 years in Farming
- 20 years on the Goodland, KS city commission
- Endorsed by Ward Cassidy

**VOTE RICK BILLINGER**

Pol. ad paid for by Billinger for Kansas, Douglas Sederstrom, CPA, Treasurer.

**CROSSROADS Worship**

This isn't the church of your childhood. This isn't a "pretend you're perfect" place. This is a group of people who want change in their lives coming together to **encourage** each other and **praise God** for second, third (or more) chances.

**Saturdays 6 pm** **REAL PEOPLE**

**CLARK CROSSING**  
223 E 10th Street

from our viewpoint...

# Airlines looking to pull a fast one

Airlines are asking Congress to overturn a regulation requiring them to quote the full cost of a ticket, rather than just the fare, in advertising or when people go online.

In an over regulated world, it'd be nice to think that shedding at least one set of regulations would be a good thing. But we have to ask, why do the airlines want to deceive people into thinking their fare will be lower than it really is?

The carriers want to be able to advertise, or quote, just the fare for a ticket, which might be, say, \$400. However, the actual bill may be closer to \$495 with taxes and fees; the consumer won't know until they get to the last page of a website sale or read the fine print at the bottom of the page.

This is not something every airline did, even when regulations allowed it. Some independent websites showed both prices up front, while some made you wait to see the full bill. It was the same with airlines until the current regulations went into effect.

The airlines fought the regulation before the Department of Transportation issued it two years ago, but having lost that battle, took their fight to Congress. A House committee passed the bill out on a voice vote – no record of who supported or opposed it – after a reported nine minutes of discussion.

One representative called it “a gift to the airlines.” “It’s misleading to the consumer,” Rep. Jerrold Nadler, D-N.Y., said to an Associated Press reporter. “It’s just dishonest.”

The airlines’ hope, apparently, is that, in an era of rising ticket prices, people will be comfortable enough with the basic fare to commit to a sale, and won’t be inclined to back out later when they see the full price.

The airlines argue that they should be able to advertise prices the same way hotels, rental car companies and even grocery stores do – sans taxes.

“Consumers are better served when they can buy airfares like they buy any other product,” said Sharon Pinkerton, senior vice president of the group Airlines for America, which represents the carriers. “I think what’s confusing is to have airfares treated differently.”

Maybe that’s true, though it seems more honest to disclose the entire price of a ticket, room or other service up front.

We wouldn’t back a law to require groceries or department stores to post their prices “including sales tax,” but it might be nice if they did so. It’d be nice if we felt the airlines weren’t trying to trick us as they continually hike their prices, too. We’d prefer them to give us the bad news up front.

Most people don’t travel by air that often, and many may not know what to expect. But if the airlines get the law changed, they’ll certainly do whatever they think will be best for sales, not consumers.

Our advice is, “buyer beware.” Anyone who goes to buy an airline ticket, especially on a website, should know it’ll cost a bunch more than the advertised price. — Steve Haynes



# Political questions abound

To the Editor:

If you haven't heard already, 104 current and former Republican elected officials have formed a group called Republicans for Kansas Values and they have officially endorsed not the incumbent governor, not the Republican Primary challenger, but the lead Democratic challenger! What path is the Republican Party going these days? Obviously, not the path toward unity.

It troubles me that a faction would feel the need to turn on their own party. Can anyone remember a time when so many prominent officials organized a revolt of this magnitude? What does this say about being able to work together for the common good, on both sides of the conflict? Why does it seem to be “my way or the highway” these days? Whatever happened to working together to find practical solutions?



## from our readers

to the editor

Lots of questions, very few answers. Plenty of finger-pointing though. Suspiciously similar to when I walk into a room in the middle of a quarrel between my young children.

The Kansas Secretary of State's office reports that almost 31 percent of Kansas voters are unaffiliated. These “independent” voters also experienced a higher increase in numbers than the Republican voters since March 1 of this year. The number of registered Republicans in Kansas is about 765,000, or a little over 44 percent of registered voters. Are Republicans becoming disenchanted with the

party lines and escalating internal turmoil? Or maybe the 6,500-plus newly registered voters are fed up with both parties and want nothing to do with either.

One thing is sure: Kansas needs leadership that has the best interests of Kansas at heart. First. Foremost. Always.

Primary Election day is Aug. 5. General Election day is Nov. 4. Please find some time to educate yourself on the candidates in all the races. And please don't rely on advertising propaganda to make up your mind for you. Inform yourself and make the choice that best represents your opinions and values. Let the true voice of Kansas be heard. Maybe, just maybe, we can get back to basics.

Adam W. Smith  
Wallace County Commissioner  
Candidate for State Representative  
120th District

# Make an informed choice

The August primary election is less than a few weeks away. Republicans in the 120th District have several choices for state and national offices. November will be the month where political parties clash and the final winners and losers will be decided.

I will end my four years as a state representative in November. I have enjoyed the many contacts I have made and the knowledge I have gained about politics in Kansas.

My biggest disappointment about elections is that so many people don't vote and so many more don't know anything about the people they are voting for. This past weekend, I was at a conference where people from all over our state were present. I asked everyone I spoke with “who is your state representative and who is your state senator.” Only two people actually knew.

I spoke with a lady who told me that she learned more about what was going on in Topeka from my articles than anywhere else. She graduated from an area high school and still subscribes to their paper.



## ward cassidy

state rep.

My point is that only a small minority of Kansans work diligently not only to vote but encourage others to vote their way. Only a small minority know what the major issues are in Kansas. In the 120th District, the most common emails I received dealt with gun control and abortion issues. These are both important issues, but there are many more that will affect the quality of life we have in northwest Kansas.

I would advise that post cards should not be the deciding factor on how you choose your candidate or how you vote on an issue. Post cards can come from anyone and say about anything they want. Recent post cards have been used to make people fearful of an issue and have not presented the facts accurately. Cards on the Renewable Energy Standards

were made out to make people think they were paying for wind energy projects in the state out of their electric bills. There was a lot more to the issue.

Being a state representative is a challenging job. Being a representative from western Kansas is even more so. I went to Topeka thinking I was a conservative Republican. Basic fiscal thought was to not spend more than the state was bringing in and to limit the size of government.

I found that the Legislature is run by the far right, and when they limit government and spending, it hurts western Kansas more than I liked. I ended up making concessions to save a few things necessary for our survival.

A final thought: the quality of life in northwest Kansas is something we should very much appreciate and not take for granted. It is past time to forget old concerns and to concentrate on working hard to find ways to preserve our communities.

# The Goodland Star-News

(USPS No. 222-460. ISSN 0893-0562)

Member: Kansas Press Association

Inland Press Association Colorado Press Association

National Newspaper Association

e-mail: [star.news@nwkansas.com](mailto:star.news@nwkansas.com)

Steve Haynes, President

Kevin Bottrell, Editor

Pat Schiefen, Society Editor

Advertising Department

Jessica Harenberg, Reagan Osban and Angela Bonham

Sheila Smith, Circulation Manager



## Nor'west Press

Richard Westfahl, General Manager

Gary Stewart, Jim Bowker, James Jackson

Tracy Traxel, Rebecca Satterlee, Gloria Bustillos,

and Judy McKnight

[nwkansas.com](http://nwkansas.com)

N.T. Betz, Director of Internet Services

([nbetz49@nwkansas.com](mailto:nbetz49@nwkansas.com))

Evan Barnum, Systems Admin. ([support@nwkansas.com](mailto:support@nwkansas.com))

Published every Tuesday and Friday except the days observed for New Year's Day, Memorial Day, July 4th, Labor Day, Thanksgiving and Christmas Day, at 1205 Main Ave., Goodland, Kan. 67735.

Periodicals postage paid at Goodland, Kan. 67735; entered at the Goodland, Kan., Post Office under the Act of Congress of March 8, 1878.

POSTMASTER: Send address changes to The Goodland Star-News, 1205 Main Ave., Goodland, Kan. 67735.

TELEPHONE: (785) 899-2338. Editorial e-mail: [star-news@nwkansas.com](mailto:star-news@nwkansas.com).

Advertising questions can be sent to: [goodlandads@nwkansas.com](mailto:goodlandads@nwkansas.com).

The Goodland Star-News assumes no liability for mistakes or omissions in advertising or failure to publish beyond the actual cost of the ad.

SUBSCRIPTIONS: In Sherman County and adjacent counties: three months, \$29; six months, \$46; 12 months, \$81. Out of area, weekly mailing of two issues: three months, \$39; six months, \$54; 12 months, \$89 (All tax included). Mailed individually each day; (call for a price).

Incorporating:

## The Goodland Daily News

1932-2003

## The Sherman County Herald

Founded by Thomas McCants

1935-1989

## THE SHERMAN COUNTY STAR

Founded by Eric and Roxie Yonkey

1994-2001

## Nor'West Newspapers

Haynes Publishing Company

# Water dependence

You don't realize how much you depend on water until the tap stops running.

I turned on the tap at our house in Colorado last month, and nothing happened.

The water had always worked before. It certainly wasn't frozen, since it was June and the temperature outside was in the 70s.

So where was the water? It was 10 in the morning and we, being on vacation, hadn't taken our showers yet. In fact, we were just getting ready for breakfast.

Breakfast wasn't so bad. You really don't need water to make a couple of pieces of toast and have some fruit.

Luckily, I had already made the coffee, or I'd have been trekking down to the river in my robe and slippers to fill up the pot. That would have been an interesting sight, since the house isn't exactly in the woods. It's in a small subdivision about a block from the Rio Grande, with neighbors and the usual assorted dogs, cats and children.

Still, as soon as breakfast was done, I tried to rinse the dishes.

Dang. That didn't work. I just had to hope that the jelly didn't harden too much before I could get water.

Before long, it was noon, then 1 p.m. and then 2.

For lunch, we had cold sandwiches on paper plates, but I hate working with food when I can't wash my hands. That just causes cross



## cynthia haynes

open season

contamination and a chance at gastrointestinal upsets in the days to come.

We had flushed the toilet before we knew that the water was off, so we couldn't “steal” any from the tank.

Steve opened the faucet on the sink so we'd

hear the water when it came back on, and about 3:30 that afternoon, the swoosh of running water could be heard.

We showered and shaved, washed the dishes and filled a couple of jugs just in case the tap went dry again.

Later, when I headed for town, I noticed a Volkswagon sized hole in the road where the water main had been dug up. I'm not sure what they were fixing, but whatever the problem, it got fixed and we had water again.

You just don't know how often you use water until it isn't available. Thank goodness, I say, for running water and indoor plumbing.

## where to write

**U.S. Sen. Pat Roberts**, 109 Hart Senate Office Building, Washington D.C. 20510. (202) 224-4774; website – [roberts.senate.gov](http://roberts.senate.gov).

**U.S. Sen. Jerry Moran**, 354 Russell Senate Office Building, Washington, D.C. 20510. (202) 224-6521; Fax (202) 228-6966. website – <http://moran.senate.gov>.

**U.S. Rep. Tim Huelskamp**, 1st Congressional District, 126 Cannon House Office Building, Washington D.C., 20575-1601. (202-225-2715) Website – <https://huelskamp.house.gov>.

**State Rep. Ward Cassidy**, State Capitol Building Rm 151-S, 300 SW 10th, Topeka, Kan. 66612. Phone (785) 296-7616, home (785) 332-2850; e-mail address [ward.cassidy@house.ks.gov](mailto:ward.cassidy@house.ks.gov).

**State Sen. Ralph Ostmeyer**, State Capitol Building, Rm. 136-E, 300 SW 10th, Topeka, Kan. 66612. (785-296-7399; e-mail address [ostmeyer@senate.state.ks.us](mailto:ostmeyer@senate.state.ks.us)).

**Kansas Attorney General**, 301 S.W. 10th, Lower Level, Topeka, KS 66612-1597 (785) 296-3751 Fax (785) 291-3699 TTY: (785) 291-3767

# Feedback sought on rate increase

RATE, from Page 1

fully scrutinized. "We have to ask ourselves, 'is this rate request just and reasonable,'" he said. "Everything is looked at, even our own salaries."

Jacobs said the Corporation Commission and groups like the Citizen's Utility Ratepayer Council also makes determinations.

"We don't always agree, that's why it's a litigated process," he said.

Jacobs said the company is asking for a rate increase that will total \$7.3 million. For residential users, the monthly customer charge would increase from \$16 to \$21.70. The company calculated that the average monthly bill would increase about \$.17, and there would be a decrease in the commodity charge would decrease .17 cents per therm. For commercial customers, the monthly customer charge would increase from \$22.75 to \$36, and the per therm commodity charge

would decrease by the same amount as residential.

The driving force behind the rate increase, Jacobs said, is infrastructure upgrades such as pipelines, replacing old pipe and responding to new federal and state regulations. He said the increase was not to cover basic operating costs.

"We're not spending on things that don't provide a return," he said.

David Springe, consumer counsel for the Citizen's Utility Ratepayer Board, said his organization is a five-member volunteer board that scrutinizes things like proposed rate increases.

Springe said one of the issues he looked at was how much shareholder profit is built into the rate increase.

"Black Hills has about 10 percent profit built in, we think that's too much," he said.

Springe said the board's economic consultant recommends 8.5 percent, and the Corporation

Commission has the discretion to set that percentage.

Springe also objected to the increase in the base customer charge.

"There has been a movement to try and get all the money in the customer charge instead of based on you actually using gas," he said. "Our policy is that the commission should land about fifty-fifty between customer charge and usage."

Springe then brought up surcharges and riders, saying that utilities like Black Hills often use surcharges to recover safety-related expenses.

"There has been a proliferation of surcharges," he said. "And they are asking for a new one so they can do upgrades between rate changes."

Once the public feedback period ends, the staff at the Corporation Commission will make a recommendation to the commission, who will then make a decision on the rate increase.

# Neighborhood Revitalization talks continue at city-county meeting

TALKS, from Page 1

amount decreasing each year. He said this would be less of a financial shock to the person doing the project if, when it is finished, they go from getting a small amount back to paying all of it. It would also be less of a burden on those county entities who are getting cut, he said, and would be an easier sell.

City Commissioner Brian Linin said the math could be done many different ways, but for someone considering a project, getting 90 percent back for five years sounds very good. Evert agreed, saying builders would use that larger chunk of money each year to pay down principle and come out ahead when they come off the rebate program.

Klemm said the county still feels strongly about tying the commercial side of the program to jobs. He said they spoke to a representative from Manatron, the company that provides the tracking software for the program, who said the software is already set up to be able to track job creation.

"We asked him how many counties he oversees, and the answer was about 40," Klemm said. "We asked him what he was seeing, and he said that a lot of counties are lowering the rebate amounts or shortening it to five years."

Linin floated several ideas he had been considering since the last meeting. One was to look at capping the total amount of money that could be paid back under the plan. Klemm said this had been considered, but they were not sure how to implement it, especially since many projects don't have exact dollar amounts when they start.

Linin said he still sees the goal of the program as raising the valuation of the county, and that it should be the metric used to determine the success of the program.

"You to look at it year to year and compare the numbers," he said. "At some point you'll see correlation." Klemm said county valuation changes are affected

by many macro-economic forces besides Neighborhood Revitalization, and that he did not think those could be filtered out.

The city asked for time to look over the changes, and discuss them at their regular meeting on Monday.

HAPPY BIRTHDAY!



Vega Mercer

My goodness and great heavens,  
Granddaughter Vega is in her 75!

Happy Birthday!  
Love, Papa Curtis

# NASCAR greets to race in Colby on Sunday

NASCAR, from Page 1

far west for a dirt-track race. He will be in one of the Bracks' IMCA

Modifieds for the \$1,000-to-win race. Wallace, known as "Herm" by many of his fans, is the only driver to have over 900 starts in NASCAR's

top three series.

Tickets are available online at [www.brownpapertickets.com](http://www.brownpapertickets.com). Hot laps will begin at 6 p.m. and racing will start at 7. Check out [thomascountyspeedway.com](http://thomascountyspeedway.com) or the track's facebook page for details.

# Absolute AUCTION

Various Medical Equipment, Office Supplies, and Office Furniture

MONDAY, JULY 28, 2014 @ 10:00 AM CDT  
ON SITE - 175 S. RANGE AVE. - COLBY

PROPERTY VIEWING: Thursday, July 24, 2014, 5:30-7:30 PM CDT

CALL TO REQUEST A SALE BILL!!!

Property will be sold by room NOT by item.

View a Sale Bill at [www.homelandre.com](http://www.homelandre.com)



1055 S. Range Ave.  
Colby, KS 67701  
785-462-8255  
[www.homelandre.com](http://www.homelandre.com)  
[tharrison@homelandre.com](mailto:tharrison@homelandre.com)

**Tom Harrison**  
785-443-0136







SPECIALIZING IN CUSTOMIZED  
STEEL AND POST FRAME BUILDINGS

WE WILL BEAT ANY NORTHWEST KANSAS  
COMPETITOR'S PRICE ON A COMPARABLE PROJECT!!

**AFFORDABLE • SUSTAINABLE • LOW-MAINTENANCE • MULTI-PURPOSE**  
Vap Construction, Inc. offers numerous design styles, sizes, exterior finishes, accessories and colors for your Commercial, Agricultural or Residential Building.

**CONTACT US FOR A QUOTE TODAY! CALL: 866-492-1978**  
Serving Kansas, Nebraska, Colorado and Wyoming • Fully insured with over 25 years of experience  
For more information visit: [vapconstruction.com](http://vapconstruction.com) • 605 North 10th Street | Atwood, KS 67730




# SERVICE LUBE TECHNICIAN NEEDED

Finley Motors, Inc. is currently taking applications for a full-time Service Lube Technician. This position will offer full-time benefits which include health/dental insurance, retirement, vacation pay, and holiday pay. Apply in person at Finley Motors, Inc. or call Danny Archer at (785) 899-2346.

# FINLEY MOTORS, INC.

1520 Highway 27, Goodland, KS 67735

Toll free: (800) 525-3701

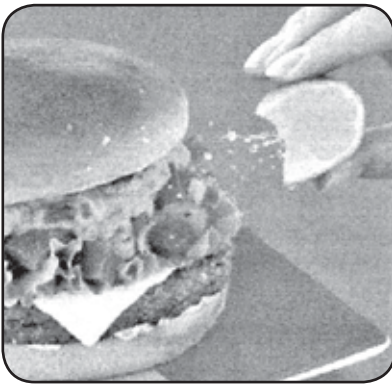
"Your volume & variety dealer!"



[WWW.FINLEYMOTORSINC.COM](http://WWW.FINLEYMOTORSINC.COM)

# Taste the Greatness!

Try our new Guacamole Burger!



With a 1/4 lb. 100% beef patty (or grilled or crispy chicken) topped with pico de gall, ranch sauce, white cheddar cheese, crispy leaf lettuce and a lime wedge, all on a fresh artisan bun, it's hard to go wrong with McDonald's newest burger!

**Quarter Pounder:** Sandwich \$4.69 • Combo \$6.69  
**Chicken:** Sandwich \$4.89 • Combo \$6.89



GOODLAND LOCATION ONLY • OPEN DAILY 6 A.M. TO 11 P.M.



- |                                                                                                                                                                                                                                                                                                                                                                                                                                                                                                                                                                                                                                                                                                                                                                                                                                                                                                                                                                                                                                                                                                                                                                                                                                                                                                                                                                                                                                                                                                                                                                                                     |                                                                                                                                                                                                                                                                                                                                                                                                                                                                                                                                                                                                                                                                                                                                                                                                                                                                                                                                                                                                                                                                                                                                                                                                                                                                                                                                                                                                                                                                                                                              |                                                                                                                                                                                                                                                                                                                                                                                                                                                                                                                                                                                                                                                                                                                                                                                                                                                                                                                                                                                                                                                                                                                                                                                                                                                                                                                                                                                 |
|-----------------------------------------------------------------------------------------------------------------------------------------------------------------------------------------------------------------------------------------------------------------------------------------------------------------------------------------------------------------------------------------------------------------------------------------------------------------------------------------------------------------------------------------------------------------------------------------------------------------------------------------------------------------------------------------------------------------------------------------------------------------------------------------------------------------------------------------------------------------------------------------------------------------------------------------------------------------------------------------------------------------------------------------------------------------------------------------------------------------------------------------------------------------------------------------------------------------------------------------------------------------------------------------------------------------------------------------------------------------------------------------------------------------------------------------------------------------------------------------------------------------------------------------------------------------------------------------------------|------------------------------------------------------------------------------------------------------------------------------------------------------------------------------------------------------------------------------------------------------------------------------------------------------------------------------------------------------------------------------------------------------------------------------------------------------------------------------------------------------------------------------------------------------------------------------------------------------------------------------------------------------------------------------------------------------------------------------------------------------------------------------------------------------------------------------------------------------------------------------------------------------------------------------------------------------------------------------------------------------------------------------------------------------------------------------------------------------------------------------------------------------------------------------------------------------------------------------------------------------------------------------------------------------------------------------------------------------------------------------------------------------------------------------------------------------------------------------------------------------------------------------|---------------------------------------------------------------------------------------------------------------------------------------------------------------------------------------------------------------------------------------------------------------------------------------------------------------------------------------------------------------------------------------------------------------------------------------------------------------------------------------------------------------------------------------------------------------------------------------------------------------------------------------------------------------------------------------------------------------------------------------------------------------------------------------------------------------------------------------------------------------------------------------------------------------------------------------------------------------------------------------------------------------------------------------------------------------------------------------------------------------------------------------------------------------------------------------------------------------------------------------------------------------------------------------------------------------------------------------------------------------------------------|
| <p><b>Best current Sherman County People</b></p> <ul style="list-style-type: none"> <li>Best Financial planner _____</li> <li>Best car sales person _____</li> <li>Best employer _____</li> <li>Best coach _____</li> <li>Best Physical Therapist _____</li> <li>Best Massage Therapist _____</li> <li>Best City employee _____</li> <li>Best County employee _____</li> <li>Best Pastor _____</li> <li>Best mechanic _____</li> <li>Best principal _____</li> <li>Best Chiropractor _____</li> <li>Best Investment Broker _____</li> <li>Best Attorney _____</li> <li>Best Secretary _____</li> <li>Best School Teacher _____</li> <li>Best Physician _____</li> <li>Best Ag Equipment _____</li> <li>Best Electrician _____</li> <li>Best Bartender _____</li> <li>Best Waiter/Waitress (one each) _____</li> <li style="padding-left: 20px;">Waiter _____</li> <li style="padding-left: 20px;">Employed at: _____</li> <li style="padding-left: 20px;">Waitress _____</li> <li style="padding-left: 20px;">Employed at: _____</li> <li>Best postal carrier _____</li> <li>Best Dentist _____</li> <li>Best Real Estate Broker _____</li> <li>Best Insurance Agent _____</li> <li>Best Pharmacist _____</li> <li>Best Auctioneer _____</li> <li>Best Radio Personality _____</li> <li>Best College Professor _____</li> <li>Best Nurse _____</li> <li>Best Veterinarian _____</li> <li>Best Public Official _____</li> <li>Best Sheriff's Deputy _____</li> <li>Best local artist _____</li> <li>Best police officer _____</li> <li>Best firefighter _____</li> <li>Best plumber _____</li> </ul> | <p><b>Best Sherman Co. Food and Beverage</b></p> <ul style="list-style-type: none"> <li>Best Pizza _____</li> <li>Best Burger _____</li> <li>Best Chicken _____</li> <li>Best Breakfast _____</li> <li>Best Steak _____</li> <li>Best coffee _____</li> <li>Best Mexican food _____</li> <li>Most Romantic Restaurant _____</li> <li>Best Chinese food _____</li> <li>Best restaurant to take out of town guests _____</li> <li>Best desserts _____</li> <li>Best sandwich _____</li> <li>Best place to get ice cream _____</li> <li>Best liquor store _____</li> <li>Best drive thru _____</li> </ul> <p><b>Best Sherman County Entertainment</b></p> <ul style="list-style-type: none"> <li>Best place for first date _____</li> <li>Best local event _____</li> <li>Best place to dance _____</li> <li>Best local radio station _____</li> <li>Best live performance _____</li> <li>Best place to play Bingo _____</li> <li>Best teen hangout _____</li> </ul> <p><b>Best Around Sherman County</b></p> <ul style="list-style-type: none"> <li>Best place to picnic _____</li> <li>Best place to run/walk _____</li> <li>Best place to meet singles _____</li> <li>Best tourist attraction _____</li> <li>Best church _____</li> <li>Best golf course _____</li> <li>Best park _____</li> <li>Best civic organization _____</li> <li>Best day trip _____</li> <li>Best outdoor activity _____</li> <li>Best place to view sunset _____</li> <li>Best yard _____</li> <li>Best place for exercise classes _____</li> </ul> | <p><b>Best Sherman Co. Goods and Services</b></p> <ul style="list-style-type: none"> <li>Best daycare provider _____</li> <li>Best automotive repair _____</li> <li>Best auto body shop _____</li> <li>Best Gas/convenience store _____</li> <li>Best new/used car dealer _____</li> <li>Best auto parts _____</li> <li>Best home health care _____</li> <li>Best auto glass _____</li> <li>Best tire center _____</li> <li>Best nursing home _____</li> <li>Best assisted living _____</li> <li>Best beauty salon _____</li> <li>Best nail salon _____</li> <li>Best cell phone carrier _____</li> <li>Best butcher _____</li> <li>Best photographer _____</li> <li>Best tanning beds _____</li> <li>Best florist _____</li> <li>Best carpet cleaning _____</li> <li>Best ag supply store _____</li> <li>Best gift shop/collectables _____</li> <li>Best bank _____</li> <li>Best pharmacy/drug store _____</li> <li>Best bar _____</li> <li>Best lumber yard _____</li> <li>Best heating &amp; cooling _____</li> <li>Best eye-ware _____</li> <li>Best internet/cable provider _____</li> <li>Best motel/hotel _____</li> <li>Best hardware store _____</li> <li>Best furniture store _____</li> <li>Best appliance store _____</li> <li>Best towing service _____</li> <li>Best barber _____</li> <li>Best "big rig" shop _____</li> <li>Best funeral home _____</li> </ul> |
|-----------------------------------------------------------------------------------------------------------------------------------------------------------------------------------------------------------------------------------------------------------------------------------------------------------------------------------------------------------------------------------------------------------------------------------------------------------------------------------------------------------------------------------------------------------------------------------------------------------------------------------------------------------------------------------------------------------------------------------------------------------------------------------------------------------------------------------------------------------------------------------------------------------------------------------------------------------------------------------------------------------------------------------------------------------------------------------------------------------------------------------------------------------------------------------------------------------------------------------------------------------------------------------------------------------------------------------------------------------------------------------------------------------------------------------------------------------------------------------------------------------------------------------------------------------------------------------------------------|------------------------------------------------------------------------------------------------------------------------------------------------------------------------------------------------------------------------------------------------------------------------------------------------------------------------------------------------------------------------------------------------------------------------------------------------------------------------------------------------------------------------------------------------------------------------------------------------------------------------------------------------------------------------------------------------------------------------------------------------------------------------------------------------------------------------------------------------------------------------------------------------------------------------------------------------------------------------------------------------------------------------------------------------------------------------------------------------------------------------------------------------------------------------------------------------------------------------------------------------------------------------------------------------------------------------------------------------------------------------------------------------------------------------------------------------------------------------------------------------------------------------------|---------------------------------------------------------------------------------------------------------------------------------------------------------------------------------------------------------------------------------------------------------------------------------------------------------------------------------------------------------------------------------------------------------------------------------------------------------------------------------------------------------------------------------------------------------------------------------------------------------------------------------------------------------------------------------------------------------------------------------------------------------------------------------------------------------------------------------------------------------------------------------------------------------------------------------------------------------------------------------------------------------------------------------------------------------------------------------------------------------------------------------------------------------------------------------------------------------------------------------------------------------------------------------------------------------------------------------------------------------------------------------|

**Contest rules:** Must be current business/person IN SHERMAN COUNTY. Only one answer per "Best of." Try to fill out survey completely. Name and phone number must be included (box to the right). One ballot per person.

Return ballots to our office, by mail, or email.  
EMAIL: [jcorbin@nwks.com](mailto:jcorbin@nwks.com)

**The Goodland Star-News**  
1205 Main, Goodland, KS 67735  
Phone: (785) 899-2338 • Fax: (785) 899-6186

NAME: \_\_\_\_\_  
Contact number: \_\_\_\_\_  
Contact email: \_\_\_\_\_



# IRS has adopted "Taxpayer Bill of Rights"

The Internal Revenue Service in June announced the adoption of a "Taxpayer Bill of Rights" that will become a cornerstone document to provide the nation's taxpayers with a better understanding of their rights.

The Taxpayer Bill of Rights takes the multiple existing rights embedded in the tax code and groups them into 10 broad categories, making them more visible and easier for taxpayers to find on IRS.gov.

Publication 1, "http://www.irs.gov/uac/Publication-1.-Your-Rights-as-a-Taxpayer-1 Your Rights as a Taxpayer." has been updated with the 10 rights and will be sent to millions of taxpayers this year when they receive IRS notices on issues ranging from audits to collection.

The rights will also be publicly visible in all IRS facilities for taxpayers and employees to see.

"The Taxpayer Bill of Rights contains fundamental information to help taxpayers," said IRS Commissioner John A. Koskinen.

"These are core concepts about which taxpayers should be aware. Respecting taxpayer rights continues to be a top priority for IRS employees, and the new Taxpayer Bill of Rights summarizes these important protections in a clearer, more understandable format than ever before."

The IRS released the Taxpayer Bill of Rights following extensive discussions with the Taxpayer

Advocate Service, an independent office inside the IRS that represents the interests of U.S. taxpayers.

Since 2007, adopting a Taxpayer Bill of Rights has been a goal of National Taxpayer Advocate Nina E. Olson, and it was listed as the Advocate's top priority in her most recent Annual Report to Congress.

"Congress has passed multiple pieces of legislation with the title of 'Taxpayer Bill of Rights,'" Olson said.

"However, taxpayer surveys conducted by my office have found that most taxpayers do not believe they have rights before the IRS and even fewer can name their rights. I believe the list of core taxpayer rights the IRS is announcing today will help taxpayers better understand their rights in dealing with the tax system."

The tax code includes numerous taxpayer rights, but they are scattered throughout the code, making it difficult for people to track and understand. Similar to the U.S. Constitution's Bill of Rights, the Taxpayer Bill of Rights contains 10 provisions. They are:

1. The Right to Be Informed
2. The Right to Quality Service
3. The Right to Pay No More than the Correct Amount of Tax
4. The Right to Challenge the IRS's Position and Be Heard
5. The Right to Appeal an IRS Decision in an Independent Forum
6. The Right to Finality
7. The Right to Privacy

8. The Right to Confidentiality
9. The Right to Retain Representation
10. The Right to a Fair and Just Tax System

The rights have been incorporated into a redesigned version of Publication 1, a document that is routinely included in IRS correspondence with taxpayers.

Millions of these mailings go out each year. The new version has been added to IRS.gov, and print copies will start being included in IRS correspondence in the near future.

The timing of the updated Publication 1 with the Taxpayer Bill of Rights is critical because the IRS is in the peak of its correspondence mailing season as taxpayers start to receive follow-up correspondence from the 2014 filing season.

The publication initially will be available in English and Spanish, and updated versions will soon be available in Chinese, Korean, Russian and Vietnamese.

The IRS has also created a special section of IRS.gov to highlight the 10 rights.

The web site will continue to be updated with information as it becomes available, and taxpayers will be able to easily find the Bill of Rights from the front page.

The IRS internal web site for employees is adding a special section so people inside the IRS have easy access as well.

As part of this effort, the IRS will add posters and signs in coming

months to its public offices so taxpayers visiting the IRS can easily see and read the information.

"This information is critically important for taxpayers to read and understand," Koskinen said.

"We encourage people to take a moment to read the Taxpayer Bill of Rights, especially when they are interacting with the IRS. While these rights have always been there for taxpayers, we think the time is right

to highlight and showcase these rights for people to plainly see."

"I also want to emphasize that the concept of taxpayer rights is not a new one for IRS employees; they embrace it in their work every day," Koskinen added.

"But our establishment of the Taxpayer Bill of Rights is also a clear reminder that all of the IRS takes seriously our responsibility to treat taxpayers fairly."

Koskinen added, "The Taxpayer Bill of Rights will serve as an important education tool, and we plan to highlight it in many different forums and venues."

**Classifieds work!**  
**899-2338**

## Sleep Beautifully

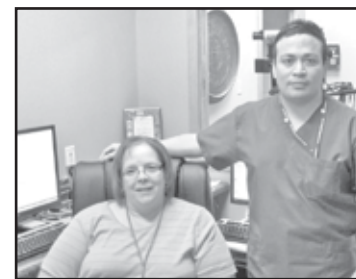


Did you know sleep problems can have an adverse effect on health issues, such as diabetes, blood pressure problems, cardio-vascular health and your general well-being? The Sleep Disorder Center at Scott County Hospital provides state of the art evaluations and treatment of sleep disorders for adults and pediatrics (children). It provides 2 private bedrooms with bathrooms and a living room area to provide a home-like ambiance.



Dr. Robert Ballard

Sleep studies are read by Dr. Robert Ballard, M.D., certified by the American Academy of Sleep Medicine and Board Certified in pulmonary disease. Our Sleep Technicians can help eliminate, under Dr. Ballard's guidance, the risk bad sleep habits can put on your overall health, and also treat specific issues. Our Technicians are bi-lingual to better serve our patients.



Scott County Hospital Sleep Disorder Center can treat sleep disorders including: snoring, sleep apnea, insomnia, nightmares, bed wetting, sleep walking/talking, restless leg syndrome, fatigue and much more. By diagnosing, treating and managing these disorders, we hope to improve the quality and longevity of our patient's lives.

## Sleep Disorder Center

at Scott County Hospital

201 Albert Avenue, Scott City, KS 67871 • Phone: (620) 874-4856

[www.scotthospital.net](http://www.scotthospital.net)

**HomeLand REALTY AUCTION**  
"Western Hospitality"  
(785) 899-3060  
[www.homelandre.com](http://www.homelandre.com)  
1112 Main Avenue  
Goodland, KS 67735

**NEW LISTING**  
**821 Harrison**  
3 BR/2 Bath  
Give Rose a call today!  
**522 College**  
\$195,000  
5 BR/3 Bath  
Call Tom today!

601 Cherry (Lot).....	\$20,000
812 Center.....	\$35,000
207 Broadway.....	\$44,500
425 Center.....	Contract
506 E. 11th.....	\$49,000
1523 Clark.....	\$59,500
218 W. 11th.....	Contract
1008 Sherman.....	\$65,000
222 W. 4th, Bird City.....	\$69,000
205 Main.....	\$69,500
1213 Caldwell.....	\$73,000
807 Eastridge.....	\$75,000
821 Harrison.....	\$76,000
923 Caldwell.....	Contract
1303 Caldwell.....	\$86,000
1222 Sherman.....	\$89,900
1016 Kansas.....	Contract
401 Caldwell.....	Contract
310 Sycamore.....	Contract
930 Centennial.....	Contract
213 Aspen.....	Contract
1185 Road 65.....	Contract
228 Acacia.....	\$175,000
522 College.....	\$195,000
6525 Road 16.....	\$300,000
1101 Main/com.....	Contract
2402 Commerce Rd/com.....	\$950,000

# Light the way to a cure

Keep the fire of hope burning by purchasing a luminaria candle in memory of someone lost to cancer, in honor of someone still fighting, or in special recognition of someone who has beaten this dreaded disease.

Complete this form and send it along with your donation to:  
Sheila Smith, 1205 Main, Goodland, Kan. 67735

Name: \_\_\_\_\_

Address: \_\_\_\_\_

City: \_\_\_\_\_

Daytime Phone: \_\_\_\_\_

**Please join us for the luminaria ceremony at 9 p.m.**

\$10.00 per luminaria please!

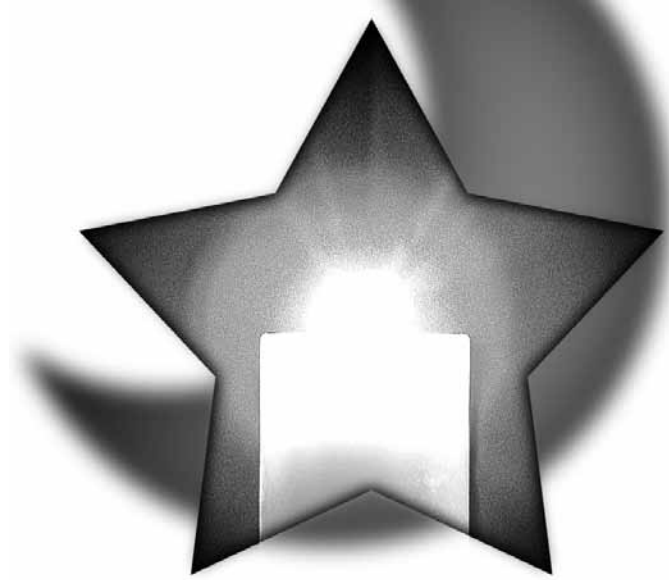
In honor of  In memory of

In honor of  In memory of

In honor of  In memory of

Total Enclosed: \_\_\_\_\_

**Make checks payable to:** The American Cancer Society



## RELAY FOR LIFE-SHERMAN COUNTY

Friday & Saturday  
July 18 & 19  
7 p.m. to 7 a.m.  
at the High School  
Track behind Vo-Tech

# Andale native went to Nashville for career

**By Ron Wilson**  
**Director**  
*Huck Boyd National Institute for Rural Development at Kansas State University*  
 Jill Martin seems to have been born with a love for music. At the age of two, she was walking around singing songs in her rural Kansas home. That love of music would lead to a music career in Nashville, and ultimately to another love in her life. Special thanks to Newman University in Wichita and writer Jayden Gregory whose article was used with permission for this story. Last week we learned about Kansan Logan Mize who went to Nashville to pursue a musical career. Today we'll meet Jill Martin who also made such a journey.

Jill Martin grew up at Andale, a rural community west of Wichita. Andale is a community of 928 people. Now, that's rural. Jill loved music at an early age. "I think I drove everyone in my family crazy because I was constantly singing around the house," she said. As a little girl, she discovered Whitney Houston. "I remember listening to (her) album in the second grade and I asked my dad how she got her voice to do a run, and he told me, 'She probably practiced a lot,'" Jill said. "I can remember listening to that specific song over and over until I could do it." Her vocal abilities continued to grow. By the fourth grade, she was performing solos. By the seventh

grade, she was singing in weddings with a band called The Martinaires. While with the band, she discovered her knack as a country singer and learned the classic country songs that she continues to love. Jill attended Newman University in Wichita. She joined a local band called "Annie Up" and toured the Midwest performing with the group. After graduation, she made the big move to Nashville, Music City USA. In Nashville, she auditioned for a local TV show. She didn't make it as a contestant, but something else happened: She met a guy named Logan Mize. As we learned last week, Logan Mize also grew up in small town Kansas near Wichita and went to

Nashville for a music career. Logan and Jill met in Nashville in 2008 and were married in 2010. Professional music careers seem to have their twists and turns. In 2005, Jill had auditioned unsuccessfully for the television show American Idol. She decided to try again in 2010. After a successful audition, she earned the "golden ticket" – a yellow paper from the show saying that she had advanced to audition at Hollywood Week, where judges select the finalists who will appear on TV. "It was such a great experience and it really made me realize what type of artist I want to be and what kind of artist I do not want to be," she said. Jill did not advance beyond the Hollywood round, but she did

achieve something much greater. On the day she was sent home from the show, she learned she was expecting. Talk about twists and turns... "God had a better plan for me," Jill said. Logan and Jill now have a little boy named Lincoln. As he has grown older, Jill has resumed her musical career. In January 2013, she recorded a very personal debut album, Jill Martin. "The songs on the album were so personal for me," she said. "I wrote them with my husband about my life. It's scary putting it out there, but I feel like if you are honest in your songs, people will relate to them." Relate they did. The album reached number 24 on the iTunes

music chart and was also featured in Billboard magazine, reaching number two on the Heatseeker chart – a remarkable accomplishment for an independent artist. The album received a number of rave reviews on iTunes and five out of five stars. "It was a dream come true," Jill said. For more information, see www.jillmartinmusic.com. Jill Martin seems to have been born with a love of music which took her all the way to Nashville. There she also fell in love with Logan Mize. We salute Jill Martin, Logan Mize, and all aspiring small town Kansas musicians for making a difference with their creative talents. I love it.

## matters of record

**Municipal Court**  
 These are cases decided by the Goodland Municipal Court:  
**Jan. 4:** Alec J. Hamilton, careless driving, fined \$160.  
**Jan. 6:** Stibe Yovani Torrez Lozano, disobey traffic control device, fined \$135.  
 Kristyn M. Yost, speeding in school zone 1-10 mph over limit, fined \$150.  
**Jan. 7:** Jario S. Bustos, illegal/no tag, fined \$135.  
 Billy Martin Curry, assault, fined \$160.  
**Jan. 8:** Joseph M. Bradley, minor consuming alcohol, fined \$260.  
 Jake W. Margheim, careless driving, fined \$160.  
**Jan 10:** Mielani L. Gould, vi-

cious animal and no animal license, fined \$830.40.  
**Jan. 11:** Amber L. Barrie, speeding 11 mph over limit, fined \$111.  
**Jan. 20:** Zachary L. Bray, disobey traffic control device, fined \$135.  
 Drew T. Gray, speeding 11 mph over limit, fined \$111.  
 Aime M. Salas, disobey traffic control device and expired/no driver's license, fined \$235.  
 Charles L. Thorson, no parking zone, fined \$185.  
**Jan. 24:** Scott S. Steggall, careless driving, fined \$160.  
**Jan. 28:** Gary Lynn Webring, speeding in school zone 11 mph over limit, fined \$162.  
**Jan. 29:** Deborah R. Ferris,

speeding in school zone 1-10 mph over limit, fined \$150.  
**Jan. 30:** Jaciann K. Houser, illegal/no tag, fined \$135.

Jeffery L. Willauer, speeding in school zone 12 mph over limit, fined \$174.

**Classifieds work!**  
**899-2338**

## public notice

**IN THE FIFTEENTH JUDICIAL DISTRICT DISTRICT COURT OF SHERMAN COUNTY, KANSAS**  
 AMERICAN IMPLEMENT, INC., Plaintiff  
 vs.  
 EDDIE LOHMAN d/b/a LOHMAN FENCING, and THE BANK OF KREMLIN, Defendants

Implement, Inc. was Plaintiff and Eddie Lohman d/b/a Lohman Fencing, and The Bank of Kremlin were Defendants, to satisfy Judgment in the sum of \$17,083.72, together with interest thereon as provided by law, and costs accrued and accruing, and the amount of costs incurred in executing upon the judgment including sheriff costs of said sale.

Burton Pianalto  
 Sheriff of Sherman County, Kansas

Case No. 2014 CV 14

**NOTICE OF SALE**  
 Notice is given that on the 5th day of August, 2014, at 10:00 o'clock a.m., in the foyer of the Sherman County Courthouse, 813 Broadway, Goodland, KS 67735, the Sheriff of Sherman County will offer for sale and sell for cash at public auction to the highest and best bidder the following personal property:

Moser Law Office, P.A.  
 CHARLES F. MOSER - #14867  
 113 W. Greeley Ave.  
 P.O. Box 429  
 Tribune, KS 67879-0429  
 620-376-4325 (O)

Published in The Goodland Str-News, Friday, July 18 and 25, 2014.

A John Deere 332 skid steer loader, Serial number T0332TE118354

Sale will be made pursuant to a Writ of Special Execution issued upon a judgment entered on July 15, 2014, in the District Court of Sherman County, Kansas, in Case No. 14-CV-14, wherein American

**DOOR & WINDOW REPLACEMENTS**  
**SEAMLESS RAIN GUTTERS**  
**GENERAL CARPENTRY REPAIRS**  
**Ron Lucke**  
**CUSTOM BUILDING**  
**(719) 346-8840**  
**CELL: (719) 349-8840**

**Transformers: Age of Extinction 3D (PG-13) starts July 25!**  
**July 18-24**  
 Nightly 7 PM  
 Sunday Matinee 1:30 PM  
 Movie bucks make great gifts!  
**Sherman Theatre**  
 1203 Main - Phone 899-6103  
 Wednesday, July 23, 1:30 PM: Shrek Forever After (PG)

**NOW TAKING APPOINTMENTS!**  
 Goodland Regional Medical Center  
 Specialty clinic in Goodland, KS  
 Call for your appointment today!  
**785-890-6030**  
 Dr. Alfred Carr  
 Ear, Nose & Throat  
 Dr. Rachel McArthur  
 Audiologist  
 • Hearing, Tinnitus and Balance Diagnostic services  
 • Clean and repair all makes and models of hearing aids  
 • Dispense all types of hearing aids  
 • We accept most major insurances.  
 Serving the Goodland area for over 30 years!  
**Colorado Hearing**  
**Tinnitus and Balance**  
 www.coloradohearingcenter.com

**Worship warms the heart**  
**Calvary Gospel Church**  
**Lead Pastors:** Randy and Mary Payne  
**Assistant Pastors:** Jacob and Rannie Soyze  
**Care Pastors:** Darrell and Jeri Schmid  
**Children's Pastors:** John and Mary Ellen Coumerlin  
 Fourth & College • 890-3605  
**Sunday:** Kid's Church: 8:30 and 10:30 a.m.  
 Morning Service: 8:30 and 10:30 am  
 Youth @ the Rock House, Sixth & Caldwell: 6:30 p.m.  
 Prayer and Praise: 5:00 p.m. except last Sunday of the month  
**Wednesday:** Kids 4 Christ 6:30 p.m.  
 during school year  
 Life Groups - See website  
 website: www.calvarygospel.net  
 email: info@calvarygospel.net or see us on Facebook

**Goodland United Methodist Church**  
 1116 Sherman 899-3631  
**Pastors:** Lew Van Der Wege  
**Sunday:** Adult Classes: 9:15 a.m.  
 Worship: 10:30 a.m. and 5 p.m.  
**Wednesday:** Wednesday Nite Live (Sept. - May)  
 5:45 - 6:15 p.m. Simple Supper - All are welcome!  
 6:15 - 7:30 p.m. Worship and Classes for all ages

**Pleasant Home Church**  
 Serving the rural community  
 Celebrating 125 years of God's gracious blessings!  
 Rt. 1, Box 180 • 3190 Road 70  
 (785) 694-2807  
**Pastor:** Perry Baird  
**Sunday:** Worship Service: 9 a.m.  
 Sunday School: 10 a.m.

**Promiseland Baptist Church**  
**Pastor:** Rick Holmes • 890-7082  
 225 W. 16th  
 (785) 890-7944  
**Sunday:** Sunday School: 10:30 a.m.  
 Morning Service: 11:30 a.m.  
 Evening Service: 6:30 p.m.  
**Wednesday:** Bible Study Service  
 6:30 p.m.

**Bible Baptist Church**  
**Pastor:** Clifford Middlebrooks  
 Fifth & Broadway  
 890-7368  
**Sunday:** Sunday School: 9 a.m.  
 Morning Service: 10 a.m.  
 Evening Service: 6:30 p.m.  
**Wednesday:** Evening Bible Study: 7 p.m.

**Church of Jesus Christ of Latter-Day Saints**  
 1200 15th Street • Burlington, CO  
 (719) 346-7984  
**Sacrament Meeting:** 10 a.m.  
**Sunday School:** 11:15 a.m.  
**Priesthood/Relief Society:** 12 a.m.

**Iglesia Del Dios Vivo**  
 La Luz Del Mundo  
 Spanish Speaking Church - translation available  
**Minister:** Jose S. Lopez  
 1601 Texas • 899-5275  
**Daily Prayer:** Sunday thru  
 Saturday: 5a.m. & 6 p.m.  
**Sunday:** Sunday School: 9 a.m.

**United Methodist Church Brewster:**  
**Pastor:** Mike Baughn  
 Worship Service: 10:45 a.m. CST  
 Sunday School: 9:45 a.m. CST  
**Minister:** Sheryl Johnson  
 Worship Service: 9 a.m. CST  
 Sunday School: 10:15 am CST

**First Christian Church (Disciples of Christ)**  
**Pastor:** Rev. Carol Edling Jolly  
 Eighth & Arcade • 890-5233  
**Sunday:** Church School - All ages 9 a.m.  
 Worship 10:30 a.m.  
 Youth Group: weekly Jr./Sr. High groups  
**Thursday:** Prayer Class - Noon  
 Pastor Carol's Class Wednesdays 5:30 p.m.  
 www.goodlandfccdoc.org

**Kanorado United Methodist Church**  
**Pastor:** Justin Schlichenmayer  
 399-2468  
**Sunday:** Sunday School: 9 a.m.  
 Worship Service: 10 a.m.

**Church of the Nazarene**  
**Pastor:** Bob Willis  
 Third & Caldwell  
 899-2080 or 899-3797  
**Sunday:** Sunday School: 9:45 a.m.  
 Worship Service: 10:50 a.m.  
 Evening Service: 6 p.m.  
**Wednesday:** Evening Service: 7 p.m.

**St. Paul's Episcopal Church**  
**Celebrant:** Father Don Martin  
 13th & Center  
 Church 890-2115 or 890-7245  
**Services:** 5 p.m. Saturday evening

**Goodland Bible Church**  
 109 Willow Road • 899-6400  
**Pastor:** Chad DeJong  
**Sunday:** Sunday School: 9:30 a.m.  
 Morning Worship: 10:45 a.m.  
 6 p.m. AWANA during school  
 Evening Worship: 7:30 p.m.  
**Wednesday:** 6:30 youth group  
 Growth groups call for information  
 www.goodlandbible.org

**First Baptist Church**  
**Pastor:** Rich Blanchette  
 1121 Main  
 890-3450  
**Sunday:**  
 Sunday School: 9 a.m.  
 Coffee fellowship: 9:45 a.m.  
 Morning Worship: 10 a.m.  
 www.firstbaptistchurchgoodland.com

**Crossroads Worship**  
**Pastor:** Craig Groeschel  
 223 E. 10th  
 262-9517  
**Services:**  
 Saturday 6 p.m.  
 Lifechurch.tv

**Harvest Evangelical Free Church**  
**Pastor:** Brian Fugleberg  
 521 E. Hwy. 24 • 890-6423  
 www.goodlandefree.com  
**Sunday:** Worship: 10:30 a.m. • **Sunday school:** 9:15  
**Wednesday:** Junior High and Senior High Youth Groups starts at 6:20 p.m. with a meal  
**1st Monday of each month:** MOPS 6 p.m. (Oct.-May)  
**2nd-5th Monday,** Men's Fraternity Study, 6:30 p.m.  
 Call Church to register. For grades PreK-5

**Seventh Day Adventist Church**  
 1160 Cattletrail  
**Pastor:** Jim McCurdy  
**Saturday:** Sabbath School: 9:30 a.m.  
 Worship Service: 11 a.m.

**Emmanuel Lutheran Church**  
 13th & Sherman • 890-6161  
**Pastor:** Darian Hybl  
**Sunday:** Christian education/fellowship:  
 10:15 a.m.  
 Worship Service: 9 a.m.

**Church of Christ**  
 401 Caldwell  
 890-6185  
**Sunday:** Bible Study: 9:45 a.m.  
 Worship Service: 10:45 a.m.  
**Wednesday:** Bible Study: 7 p.m.

**The following sponsors urge YOU to attend your chosen House of Worship this Sabbath:**  
**Short & Son Trucking**  
 Hwy. 24  
**Goodland Star-News**  
 1205 Main St.  
**Good Samaritan Center**  
 208 W. 2nd  
**KLOEIKKCEJIKWGB**  
 3023 W. 31



### CARD OF THANKS

**To all my family and friends,** thank you for coming out and braving the storm for my auction, supper and dance benefit. A big thank you to Judy and Dave, Kathy and Phil, and Janet and Craig. Appreciate every one of you! -Rhonda Lovins. -7-15-7-18-

### GARAGE SALES

**417 E. 12th.** Friday from 4-7 p.m. and Saturday from 8 a.m. to ???. Treadmill, china hutch, bookcase, Yamaha Scooter and lots of miscellaneous. -7-18-7-18-

**904 Kansas.** Moving sale Saturday from 8 a.m. to 2 p.m.. -7-15-7-18-

### WANTED

**Junk batteries,** non-ferrous metals and iron. Darrel Bowen. Phone 785-899-2578. -tfn-

### NOTICE

**Christmas in July.** Craft and vendor show. Saturday, July 26 from 9 a.m. to 3 p.m. CT at Union Square, 312 W. Washington, St. Francis. Homemade crafts, artwork, food, coffees, local vendors. -7-18-7-25-

**ROOFING CONTRACTOR:** Vap Construction of Atwood, KS has either repaired or replaced the roofs of over 500 homes, businesses, and ag buildings in the last five years. We are a Northwest Kansas company and will be here for the life of your home or building. Please call us for a quote on your roof. We specialize in asphalt shingles and metal roofing. Vap Construction, Inc. Office: 785-626-9400 or call Toll Free: 866-492-1978. -7-4-7-29-

### HELP WANTED

**The Goodland Housing Authority** is accepting applications for a full-time maintenance/custodial person. Knowledge of building maintenance, skills and experience necessary. Pay will depend on experience. Benefits including KPERs. Application are available at 515 E. 5th Street, Goodland, Kansas from 9-12 and 1-4 p.m. MT. -7-18-7-29-

**Short-Haul Truck Driver (Goodland, Kansas):** Truck

Driver, Tractor-Trailer-Drives gasoline or diesel-powered tractor-trailer combination to transport and deliver products or other materials. Drives mostly local but some long distance routes. May require over-night stays. Assist in loading and unloading truck. Operates a tractor trailer truck that transports cargo to and from specified destinations. Prepares, receives and provides appropriate documentation for the delivery or pick up of goods to ensure timely service. Loads, secures and unloads cargo. Maintains radio or telephone contact with dispatcher to receive delivery or pick up instructions or to receive notice of changes in scheduled delivery or pick up. Maintains logs of travel and cargo according to federal and state regulations. Collects COD's from customers when required. Relies on instructions and pre-established guidelines to perform the functions of the job. Other Responsibilities may include: Washing equipment as directed by Site Supervisor; Polishing and Waxing as directed by Site Supervisor; Performing maintenance duties as directed by Site Supervisor; Responsible for other duties as deemed necessary by management. Qualifications: Class A Commercial CDL with tanker endorsement (2 years' experience preferred); High School Diploma; Related job experience; Ability to stand; sit;



### Night Shift Mill Operator

We are looking for a hardworking, dependable individual who must be mechanically inclined to work on the night shift in a sunflower processing facility. Drug testing is required.

**PAY STARTING AT \$14.00 / Hour**

Please apply in person at:  
1320 E. College Dr.  
in Colby, KS

lift and/or move up to 50 lbs.; Excellent Customer Service & Attitude; Proficient Computer Skills; Must also have ability to obtain forklift certification. Apply in person at 106 E. 19th St., Goodland, or fax resume to (785) 899-0068. -7-15-7-25-

**Wallace County Community Care Center** has openings for a full time or PRN nurse, part time activity director, part time maintenance/housekeeping/laundry. We are excited about our new management team and the changes that are coming. Call 785-852-4244 talk to Teresa ext.10 or Sharon ext.11 to apply. -7-4-7-22-

**CDL driver wanted.** Home every night and weekends. Work out of Goodland. Call (785) 821-0492. -7-1-7-18-

**The team at Kansasland Tire of Norton** has an immediate opening for a service truck operator/general service person. Must have a valid driver's license. Competitive wages, 401k, insurance and uniforms. Experience preferred, but not necessary, we will train. Please stop by 11101

Rd. E1, Norton, and pick up an application or call (785) 877-5181. EOE. -2-14-tfn-NORTON-

### FOR SALE

**Mueller 26ga. metal panels.** 57 pieces (27' long by 3' wide, 6" ribs), light stone color. Brand new, never opened. \$4,000 OBO. Call (719) 342-1500. -7-18-8-18-

**1993 GMC pickup.** 97,000 miles, excellent running condition. \$2,500. Call (970) 580-6792. -7-15-7-25-

**214 W. 9th, Goodland.** 3 bedroom, 2 bath house for sale. \$65,000. Call (785) 443-1443 to make appointment. -6-20-7-20-

**McNab puppies for sale,** out of working parents. Long Island, KS. Leave message at (308) 645-9085. -NT 5-13-tfn-

**Aluminum printing plates,** 23 5/8 x 30, never been inked. 50 cents each. Goodland Star-News. -1-24-tfn

**1948 Philco Radio/Phonograph cabinet,** good condition. Both radio and phono work. \$100.00. Call (719) 350-0705. -12-31-tfn-

**2 Harley Davidson die cast models.** 1-1:10 scale Hot Wheels HD Softail. 1-1:10 scale Maisto FLSTS Heritage Springer. Still in original boxes! Call Gary at (719) 350-0705. -9-24-tfn

**AWP tool belt/pouches** with kidney belt and suspenders. Paid \$100 plus, asking \$50. Call Gary at (719) 350-0705. -9-24-tfn

**FIREWOOD FOR SALE** in Goodland. Call (785) 890-7224 or (785) 821-2814. -12-11-tfn-

### FOR RENT

**1 bedroom apartment,** close to downtown. Call (785) 821-0106. Goodland. -7-11-8-11-

**Houses and apartments in**

**Goodland.** All sizes. Call for details. (785) 890-6538. -1-10-tfn-

**Houses and apartments.** Cole Real Estate. 785-899-2683. -tfn-

### SERVICES

**Almanza's Interior Services, Inc..** Drywall specialist. Drywall hanging, drywall finishing, texture and paint. Free estimates. References available. Spanish call (785) 332-5353. English call (785) 890-6223. -3-7-tfn-

**Burlington-Goodland area.** Residential overhead door service and repair, 20 years experience. Call Gary at (719) 350-0705. -7-12-tfn

**CAT'S TNT for jewelry,** vinyl graphic designs, massages, quilting and more! Stop by 119 E. 9th, Goodland -3-23-tfn

### The Northwest Kansas Educational Service Center

is accepting applications for the 2014-2015 school year.

- Head Start Teachers (Sherman/Gove Counties)
- Gifted Facilitator
- Speech Pathologists
- Early Childhood Special Education Teachers
- Interrelated Teachers (Oberlin/Grinnell)
- Head Start Aides (Rawlins/Thomas County)
- Para-educators (Golden Plains/Quinter/Sherman County)

Applications are available at [www.nkesc.org](http://www.nkesc.org) or 785-672-3125. Applications will be accepted until the positions are filled. \*NKESC is an EOE\*

### Apply Now MATERIALS MGMT. ASST.

The **Materials Management Assistant** orders, receives, stores, and distributes all shipments delivered to Materials Management Department by vendors. Daily inventory and restocking of Pyxis Supply Units. Assist Accounts Payable in reconciling invoices to orders, track supplies in transit, and assist management personnel from other areas in obtaining relevant supplies. Other duties as assigned by department manager.

Minimum high school diploma or GED; post-high school study in related area preferred for this position.

Pre-employment physical, TB skin test, D/A screen, and physical assessment required. Excellent benefits and competitive wages. GRMC is tobacco-free.

Complete our online application at [www.goodlandregional.com](http://www.goodlandregional.com). You may include a Resume by email to: [ltaylor@gmedctr.org](mailto:ltaylor@gmedctr.org), or mail to GRMC, Attn: Human Resources, 220 W. 2nd, Goodland, KS 67735, or fax (785) 890-4045.

Goodland Regional Medical Center is an EOE/ M-F/V/H employer.  
220 W. 2nd St. Goodland KS, 67735  
(785) 890-3625

### HELP WANTED

**Alliance Field Services** is looking for a dependable individual to assist with our foreclosed properties. Handyman and problem solving skills helpful. Great weekly pay, must have drivers license and pass background check. Travel required. Located in Goodland. Contact Cynthia at 785-821-1811

### CNA, CMA, LPN & RN'S NEEDED

**Good Samaritan Society SHERMAN COUNTY**  
Good Samaritan Society in Goodland, KS, is now accepting applications for all positions. There include: CNA, CMA, LPN and RN. Applicant must be honest and reliable. Structured attendance policy is enforced. For more information please contact Shaunda Mann DNS at (785) 890-7517, or apply online at: [good-sam.com](http://good-sam.com). EOE.

### Opening for TRUCK DRIVER

**Required:** high school diploma or equivalent, CDL with HAZMAT & Tanker endorsement, ability to operate a forklift. **Duties:** Deliveries, load and unload product, utilize a forklift, general warehouse duties.

Apply at **Helena Chemical**  
6409 Road 25, Goodland, or call 785-899-2391

Excellent working environment, outstanding compensation & benefits. Pre-employment drug screening required. EOE M/F/V/H

### Help Wanted - RN

**Full time 6-2 shift Relief charge nurse MDS Nurse, training provided**

For more information, call DNS Janet at 785-332-2531. To apply, go to [www.good-sam.com](http://www.good-sam.com)

820 South Denison, St. Francis, KS 67756  
785-332-2531 • EEO

### S&T Customer Service Representative

**Full Time (temporary), Colby**

In keeping with our mission for providing quality products and services, this position supports the company's mission statement by responding promptly to customer inquiries and resolving problems in a thorough and effective manner while maintaining a focus on excellent customer service. Tasks may include serving as primary contact for customers, processing orders, customer applications, and disconnects; as well as dispatching technicians, maintaining records, selling and promoting all S&T services, answering phones, etc. Those interested must have a high school diploma, 2-3 years computer experience, one year customer service and valid KS driver's license with good driving record.

Applications available at all S&T locations: Brewster, Colby, Dighton, Goodland, Colby. See our website for more details. Drug testing required. This institution is an equal opportunity provider and employer. 1-800-432-8294 [careers@sttelcom.com](http://careers@sttelcom.com) [www.sttelcom.com](http://www.sttelcom.com)

### Kansas Department of Transportation Equipment Operator Class Series (EO Tr/EO/EO Sr)

The Kansas Department of Transportation is looking for dependable, trainable, team players with good communication skills to become part of our family. Currently hiring an **Equipment Operator Trainee** position in Goodland. Position is eligible for promotion to an Equipment Operator with completion of 6 months experience and completion of training program. On-the-job training is provided to obtain a CDL within sixty days. An annual \$250 Personal Protection Equipment allowance is available. Health insurance including dental and vision insurance are provided at a minimal cost. Other benefits include vacation and sick leave. This position is subject to pre-employment physical testing and drug testing. Valid unrestricted driver's license is required at the time of hire. Starting pay is \$12.35/hour. **Women and minorities are encouraged to apply.** Kansas Tax Clearance Certificate: Each applicant applying for a State of Kansas job vacancy must obtain a State Tax Clearance Certificate by accessing the Kansas Department of Revenue's website at: <http://www.ksrevenue.org/taxclearance.html>. A Tax Clearance is a comprehensive tax account review to determine and ensure that an individual's account is compliant with all primary Kansas Tax Laws. Applicants are responsible for submitting their certificate with all other application materials to the hiring agency. Application and Personal Data forms may be completed on-line at <http://www.jobs.ks.gov>. Submit on-line forms to **Transportation, Department of - District 3 mailbox**. Paper forms are available at any KDOT office and may be sent to Kansas Department of Transportation, P.O. Box 350, Norton, KS 67654. Indicate **Requisition #178024** on the application form by the closing date of **July 25, 2014**. This ad is paid for by the *Kansas Dept. of Transportation*.

### Apply Now PAYROLL CLERK

The **Payroll Clerk** performs all activities necessary to process bi-weekly payrolls, including maintaining related records, filing tax reports and voluntary deduction reports, processing involuntary deductions such as levies and garnishments, preparing accounting transactions and documents, documenting and updating procedures, and preparing special reports for management. Additional time may be required periodically to assist with accounting, special projects and audits. Prefer 3 to 5 years of payroll experience and/or equivalent training and high school graduate or equivalent.

We offer a full-comprehensive benefit packet: Health/Dental BCBS, HSA, Life/AD&D, LTC/STC, PTO, Pension with Employer Match, and AFLAC products.

Complete our online application at [www.goodlandregional.com](http://www.goodlandregional.com). You may include a Resume by email to: [ltaylor@gmedctr.org](mailto:ltaylor@gmedctr.org), or mail to GRMC, Attn: Human Resources, 220 W. 2nd, Goodland, KS 67735, or fax (785) 890-4045.

Goodland Regional Medical Center is an EOE/ M-F/V/H employer.  
220 W. 2nd St. Goodland KS, 67735  
(785) 890-3625

### Sponsored by The Goodland Star-News

1205 Main  
Goodland, Kan. 67735  
899-2338

### Sponsored by CLARK Crossing Co.

Books • Coffee • Art  
223 E. 10th, Goodland  
Phone: (785) 262-9517

9	3	7	8	6	4	1	5	2
5	8	1	9	2	3	4	7	6
2	6	4	7	1	5	3	9	8
6	4	8	1	3	7	5	2	9
3	9	2	6	5	8	7	1	4
7	1	5	4	9	2	8	6	3
1	5	9	3	8	6	2	4	7
4	2	3	5	7	9	6	8	1
8	7	6	2	4	1	9	3	5

### NOW HIRING! PART-TIME FRONT DESK STAFF

Flexible hours. Employee discount at Penny's Diner, Excellent promotional opportunities, Dynamic training program. APPLY TODAY! 801 N. Highway 27 (Junction of Hwy K-27 @ US-40) Sharon Springs, KS Phone: (785) 852-4664. (785) 852-4665. fax. EOE. [sharonsprings@mail.oaktreeinn.com](mailto:sharonsprings@mail.oaktreeinn.com)

### Help Wanted - CNA

**Full time 2-10 shift**

For more information, call DNS Janet at 785-332-2531. To apply, go to [www.good-sam.com](http://www.good-sam.com)

820 South Denison, St. Francis, KS 67756  
785-332-2531 • EEO

### Help Wanted

**As United Plains Ag continues to grow, we have a full time position available.**

**Truck Driver**

Must have a class A CDL License and will be hauling Dry Fertilizer and Grain.

Contact Jeff Kahle at 785-769-4611 or Eric Starns at 620-376-8633 or e-mail to [jeff.kahle@chsinc.com](mailto:jeff.kahle@chsinc.com) [eric.starns@chsinc.com](mailto:eric.starns@chsinc.com)

UNITE PLAINS AG EOE

### Economic Development Coordinator

The City of Goodland, Kansas (4,600) is looking for a dynamic leader to serve as its economic development coordinator. The City is poised for economic growth as it looks to focus its energy on its economy. While the position will work to recruit businesses to the community, it will also need to be filled by an individual who can help create programs that grow and retain current employers of the community and serve as the Director of the Goodland area Chamber of Commerce. The position will require someone with good communication, creative thinking, and collaborative skills. Review of applications will begin on August 1, 2014 and the position will remain open until filled. Cover letter and resume including three (3) references should be submitted to Gerry Bieker, City Manager, P.O. Box 59, Goodland, KS 67735. Electronic submittals can be made to [gerry.bieker@cityofgoodland.org](mailto:gerry.bieker@cityofgoodland.org). Starting salary range is \$43,000 - \$59,000 annually DOQ, plus competitive benefits.

# 14 and Under softball team places fourth at state

The Goodland 14 and Under Slammers placed fourth at the state tournament in Topeka last weekend.

The team played five games, one on Friday and four on Saturday. There were 13 teams in the double-elimination tournament.

The Cheney Fusion team won the tournament. Second place was the Hays Lady Monarchs and third place was the Rebels. The Topeka Magic and Clay Center B's were the fifth place finishers after the Slammers.

In game one on Friday, the Slammers defeated the Topeka Lady Warriors 13-5. Topeka took a 3-2 lead in the first and extended it with a two-run second inning. In the third, the Slammers scored seven runs, then sealed the deal with a four-run fourth inning.

Elke Kernal led the team in hitting, getting a triple with bases loaded in the fourth inning. Kaitlyn Daise and Hannah Ferguson each hit two singles, with Margaux Thompson and Trina Rathgeber hitting one single each. Daise pitched all four innings, giving up five runs on four hits and striking out two.

Goodland fell behind early in game two on Saturday against Emporia Energy. The girls made three errors resulting in three runs for Emporia in the first inning.

The Slammers trailed 6-2 after four innings, then in the fifth, Daise and Demi Mitchek scored off a triple by Carlie Zimmerman. Ferguson followed that up with another triple, and then scored on a single by Rathgeber to tie the game 6-6. The Slammers took the lead on an RBI single by Chelsea Phillips.

Goodland won the game 7-6 in the sixth inning when Thompson scored on a sacrifice fly by Mitchek.

Daise pitched the complete game, allowing six hits on seven runs and striking out two.

The team's first loss came in the afternoon game on Saturday against the Hays Lady Monarchs, the only other western Kansas team at the tournament.

Ferguson started on the mound and gave up eight runs in the first inning. She was replaced by Daise in the second inning. The Lady Monarchs would not score any more runs, but the Slammers couldn't get their offense going either, losing the game 8-0 after five innings.

Mitchek and Ferguson each got singles, the only hits in the game for the Slammers.

With the loss, the Slammers went to the consolation bracket, where

they beat the Clay Center B's 12-2.

Thompson and Daise scored in the first inning. Clay Center's only two runs also came in the first inning, but the Slammers took a 6-2 lead in the second and never looked back. Thompson, Daise and Rathgeber hit three singles each. Mitchek hit a double and two singles and Ferguson hit two singles. Kernal and Zimmerman hit a single each.

Daise was once again the winning pitcher, allowing just three hits and striking out three batters.

The win put Goodland in the game for third place against the Rebels. The Slammers fell behind early 7-3 in the first inning. The girls rallied, with Thompson, Phillips, Simmerman and Kayleigh McCombs scoring runs. They closed to within one point, but the Rebels scored another three runs in the fourth to complete their 11-7 win.

Daise hit three singles in the game. Rathgeber hit a single and a double, bringing in three batters. McCombs and Thompson each had two singles.

Rathgeber started on the mound, giving up five runs on three hits before being replaced. Ferguson pitched three and a third innings, giving up six runs on three hits, but striking out four. Daise finished the final inning, allowing two hits, but no runs.

Goodland 14 and Under Slammer Demi Mitchek (above), kept a hand on home plate while waiting for the umpire to make the call. Margaux Thompson (below) attempted a bunt and first baseman Hannah Ferguson (right) caught a throw from a teammate to get an out. The Slammers were at the state tournament in Topeka last weekend, where they placed fourth.

Photos by Jeris McCombs



## FUN BY THE NUMBERS

		5				2	7
			3		8		
9	2	7					4
		3		2			1
			3				
5			1	8		4	
8	5				2		
3	4			5			7
		7	6				9

Level: Advanced

Like puzzles? Then you'll love sudoku. This mind-bending puzzle will have you hooked from the moment you square off, so sharpen your pencil and put your sudoku savvy to the test!

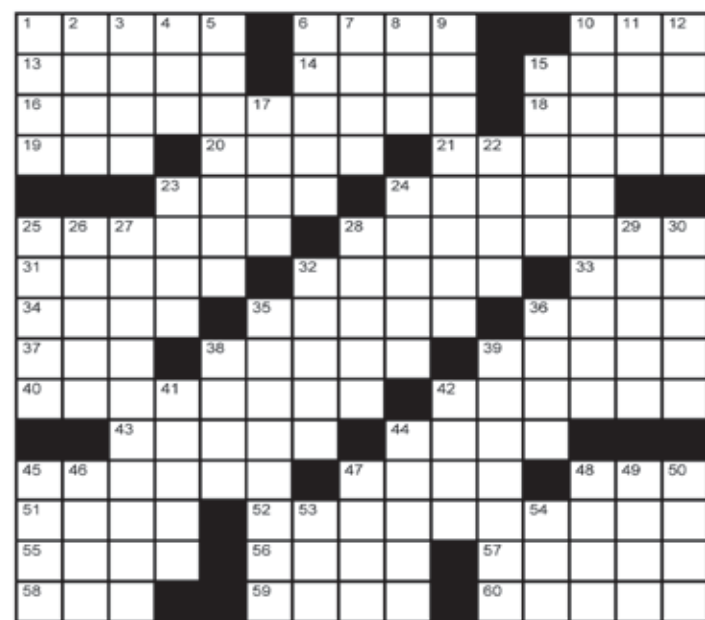
### Here's How It Works:

Sudoku puzzles are formatted as a 9x9 grid, broken down into nine 3x3 boxes. To solve a sudoku, the numbers 1 through 9 must fill each row, column and box. Each number can appear only once in each row, column and box. You can figure out the order in which the numbers will appear by using the numeric clues already provided in the boxes. The more numbers you name, the easier it gets to solve the puzzle!

## Crossword Puzzle

### Across

- 1 Very soft, as a sound
- 6 Health resorts
- 10 Uncooked
- 13 North of the Irangate scandal
- 14 Angel's instrument
- 15 Sport played on horseback
- 16 Fancy car
- 18 Actor Sharif
- 19 Peaks: abbr.
- 20 Lays out by the pool
- 21 Donate some money
- 23 Cleaner scent
- 24 Actress Keaton
- 25 Sweet and kind
- 28 Excursion on the water
- 31 Go \_\_\_ for the ride
- 32 Niagara \_\_\_
- 33 Highway: abbr.
- 34 Brothers and sisters, for short
- 35 Word with tread, wind or steel
- 36 Play to the camera
- 37 Christmas \_\_\_
- 38 There are four in most rooms
- 39 Bite down on
- 40 Trash pickup, electric, water, etc.
- 42 Wind \_\_\_
- 43 Clock sounds
- 44 Billy who sang "Piano Man"
- 45 Good pitch
- 47 Guy
- 48 From \_\_\_ Z
- 51 Worked with a certain tool
- 52 Kind of tournament



### Down

- 11 Jai \_\_\_ (fast-moving sport)
- 12 Tattered
- 15 What an arrow does
- 17 Hit the doorbell
- 22 Bowlers and derbies
- 23 Ten in a bowling alley
- 24 "Guys and \_\_\_"
- 25 Beer amounts
- 26 Existing
- 27 He played Mr. Brady on "The Brady Bunch"
- 28 Fancy dances
- 29 "Who's there?" response
- 30 Easter candy
- 32 Nail \_\_\_
- 35 "Holy" fish
- 36 TV's Dr. \_\_\_
- 38 Candle part
- 39 Rooted for your team
- 41 Makes a check useless
- 42 Freezing
- 44 One of the Jacksons
- 45 "The \_\_\_ must go on"
- 46 Ripped
- 47 "No \_\_\_, no fuss"
- 48 Not much
- 49 Scrabble piece
- 50 Small bills
- 53 "Bravo!"
- 54 Grandma, in Germany

This crossword puzzle brought to you by:

Stop in and see us during

# CRAZY DAYS

July 17-19

20 % off ALL Artwork!

20 % off Anything You Can Wear!

20% off ALL Fiction Books!

Plus, MUCH more!

New Life

212 Norris Ave. McCook

308-345-6889



The crossword puzzle brought to you by:

**CLARK Crossing Co.**  
Books • Coffee • Art

223 E. 10th, Goodland, KS 67735 • Ph: (785) 262-9517  
Hours: Daily 8 a.m. to 4 p.m. • Fri. & Sat. 7-11 p.m.