

inside today

More local news, views from your Goodland Star-News



Baseball team goes undefeated

The Goodland 12 and Under Rough Riders baseball team ended their regular season with an undefeated record and are looking for success in tournament play.

See Page 10

weather

80°
10 a.m.
Monday



Today

• Sunset, 8:16 p.m.

Wednesday

• Sunrise, 5:20 a.m.
• Sunset, 8:16 p.m.

Middy Conditions

- Soil temperature 66 degrees
- Humidity 52 percent
- Sky Sunny
- Winds south 15 mph
- Barometer 29.73 inches and steady
- Record High today 102° (2002)
- Record Low today 34° (1895)

Last 24 Hours*

High Sunday	80°
Low Sunday	46°
Precipitation	none
This month	3.19
Year to date	6.73
Below Normal	1.41 inches

The Topside Forecast

Today: Sunny with a high near 95, winds breezy out of the southwest at 10 to 30 mph and a low around 60. Wednesday: Mostly sunny with a 30 percent chance of showers and thunderstorms at night, a high near 89, winds breezy out of the southwest at 15 to 20 mph and a low around 55.

Extended Forecast

Thursday: Sunny with a high near 82 and a low around 58. Friday: Mostly sunny with a high near 87 and a low around 61. Saturday: Sunny with a 20 percent chance of showers and thunderstorms, a high near 91 and a low around 63. (National Weather Service)

brought to you by:

Truck & Tractor Repair, LLC

Full Line of Truck Parts & Accessories.
714 E. Hwy. 24, Goodland
Phone: (785) 899-2401

markets

10 a.m.

Wheat — \$6.75 bushel
Posted county price — \$6.68
Corn — \$4.38 bushel
Posted county price — \$4.30
Milo — \$5.80 bushel
Soybeans — \$13.47 bushel
Posted county price — \$13.81
Millet — no bid
Sunflowers
Oil current crop — \$18.95 cwt.
Confection — no bid
Pinto beans — no bid
(Markets by Scoular Grain, Sun Opta, Frontier Ag and 21st Century Bean. These may not be closing figures.)



Dr. Milton Wolf, candidate for the U.S. Senate in the Republican Primary Election, met with local citizens at the Butterfly Cafe on Saturday. Wolf is running against incumbent Sen. Pat Roberts. Photo by Kevin Bottrell/The Goodland Star-News

Senate candidate visits Goodland

By Kevin Bottrell

kbottrell@nwkansas.com

The Republican challenger for the U.S. Senate seat made a fiery speech in front of a crowd of both diners and politically interested citizens at the Butterfly Cafe on Saturday.

Dr. Milton Wolf of Lyons is running against incumbent U.S. Sen. Pat Roberts in the Republican Primary. The Primary Election is Tuesday, Aug. 5.

Wolf said he is pro-life and supports Second Amendment rights. He and his family are life-long National Rifle Association members. He advocates for the repeal and replacement

of the Affordable Care Act as well as an end to the Internal Revenue Service, saying the federal agency has become corrupt. He had harsh words for other federal agencies as well.

“The biggest threat to our farmers is a government inspector with a clip board,” he said. “During the shutdown the EPA sent home 93 percent of its employees. I think they should have stayed home and gone to the private sector.”

Wolf also advocates for term limits.

“I have this radical idea, some may even call it crazy, that no one should be in Washington for 47 years,” Wolf said.

Wolf also criticized previous Republican administrations and Republicans in Congress.

“It is not enough to elect the same people over and over,” he said. “Republicans presided over the largest growth of government before Barack Obama.”

Wolf is a cousin of President Barack Obama, but he described the president as the “worst in our lifetime.”

“You can’t choose your family,” he said, “but you can choose to stand up to him and say ‘you’re wrong.’”

Wolf promised to launch the “mother of all family feuds” if elected.

National accounting firms to merge

Kennedy and Coe, a national accounting and consulting firm in the food and agriculture industry with an office in Goodland, has announced plans to combine with California firm, Matson and Isom. Owners of both firms voted to merge operations on January 1 of next year pending final approvals.

Together, the firm becomes one of the nation’s largest agricultural consulting and accounting practices. With a combined 375 people and almost \$60 million in revenue, it will be about 60th in size among U.S. accounting firms. Jeff Wald will preside as chief executive officer and the firm will bear a new name.

“We do great work in our key focus areas, and

as a firm that started in the heartland, Kennedy and Coe’s deepest focus has always been in food and agriculture. We are determined to be part of the industry rather than a firm that just serves it. Over the years, we’ve added extraordinary capabilities and talent to anticipate and preempt problems for clients, and to help them seize new opportunities,” said Jeff Wald, chief executive officer of Kennedy and Coe. “Matson and Isom is a great firm that also happens to be the largest local CPA firm in the incredibly important California food and ag market. Most importantly, we share this unique vision to positively impact the future of farming and food production in America.”

Both firms focus on helping producers sustain and grow their businesses in wildly fluctuating conditions – weather, commodity price volatility, land values, and economic pressures – making sure their operations are strong and thriving for the next generation. Both firms also work extensively with related businesses throughout the food-supply chain including input suppliers, processors, packagers, storage and distributors.

“Neither of our firms are interested in growth for growth’s sake. What we’re interested in is helping the food and ag industry through some challenging yet exciting times. We can do that a lot better together than separately,” said Jim Holt, Matson and Isom’s managing director.

Freedom Festival coming up soon

Goodland’s annual Fourth of July celebration is coming up in just three weeks.

The Freedom Festival will begin at 6 p.m. with the opening up of the carnival rides. The Kiwanis Club will have a concession stand and the Rotary Club will have watermelon.

At 7 p.m. there will be live music by the Wilkens Brothers Band.

Gates to the grandstands open at 8:30 p.m. and the fireworks show by Joe Diaz begins about 9:45 p.m.

The Sherman County Community Service committee is always looking for donations to help put on the festival. Each year it takes about \$9,500.

Donations can be sent to Sherman County Community Service, Box 185, Goodland, Kan., 67735.

At last report, the committee had raised \$3,500.

The festival is primarily funded by private donations. Proceeds from the Home-Owned Carnival wristband sales go toward carnival operations and maintenance.

For information, contact Aaron Duell at info@freedomfest.shermanfairgrounds.com or 821-2120.

Wheat Plot Tour scheduled for tonight

By Jeanne Falk Jones

Kansas State Agronomist

Mark your calendars for this evening, for the annual Kansas State Wheat Plot Tour in Sherman County at 5:30 p.m. This is going to be a special wheat plot tour because we are celebrating the retirement of Jim Shroyer. Jim has been with Kansas State for 34 years and is doing his final round of wheat plot tours before his retirement on July 3.

Jim will be discussing how to select your next variety, including strengths and weaknesses of varieties and how varieties ‘fit’ in northwest Kansas. The wheat plot in Sherman County has 32 varieties to look at. Jim will also discuss the roller coaster of growing conditions and just how our wheat has responded to moisture at different

See WHEAT, Page 5

Medical wizards



Dave Branda put his name up under House Boothroy at the High Plains Museum on Saturday. The museum is displaying a Harry Potter exhibit, and the local companion exhibit describes the

various medical wizards that Goodland has seen over the years. Visitors are invited to take a quiz to see which famous medical wizard they most resemble. Photo by Kevin Bottrell/The Goodland Star-News

Prevent aquatic invasion of waters

As the warming weather beckons outdoor enthusiasts to their favorite lake or river, Kansans should remember that they play a critical role in helping stop aquatic invaders that threaten lakes and rivers in Kansas and many other states.

Aquatic nuisance species are animals and plants not native to Kansas that can threaten lake and river ecology, harm native or desirable species and interfere with our economy. They often hitchhike on the boats and equipment used by unsuspecting people who may unknowingly transport them to a previously uninfested body of water.

“Zebra mussels, Asian carp and white perch are already established in our state,” said Gov. Sam Brownback. “These and other unwanted aquatic species pose serious environmental and economic threats, not only to Kansas waters, but also those of other states.

“Unwary travelers can spread these species between states. As vice chair of the Midwestern Governors Association, I share the concerns of other governors in our region and urge everyone who visits a body of water in any state to take precautions to avoid spreading these species to other waters.”

“These species don’t respect political boundaries, and they occur in public and private water bodies of all sizes,” said Jessica Howell, Kansas aquatic nuisance species program coordinator. “Whatever your destination, it’s important to follow the local laws and regulations concerning aquatic invaders. In Kansas, go to ProtectKS Waters.org for information about nuisance species and the necessary precautions.”

There are three primary ways to help stop the spread of nuisance species:

- Clean, drain and dry boats and equipment after every visit to any lake or river (including anything that gets wet, such as tackle, swim gear, footwear and the like).

- Don’t move live fish between bodies of water or up streams.
- Don’t dump plants or animals in the water or drainage ditches. Instead, discard unused bait on dry land or in an approved receptacle, and find a new home with a pet shop or friend for unwanted aquarium species or pets.

It is also important to prevent the introduction of new species, including aquarium pets. In 2013, three tropical fish specimens were discovered in Kansas, an arowana at Lake Shawnee, near Topeka; a pacu at Stone Lake, near Great Bend; and a tilapia at Mill Creek, upstream from Shawnee Mission Park.

None of these exotic fish likely would have survived the winter. However, in 2013 and early 2014, two new populations of Chinese and Japanese mystery snails were reported in Kansas – both of which now have reproducing populations in several Kansas waters. These snails are popular with aquarium and water-garden enthusiasts.

About Asian carp, zebra mussels and white perch

Asian carp – actually three species of carp – threaten waterways and fish populations. They can eat up to 40 percent of their body weight each day, competing with native fish for food and threatening the diversity and quality of other aquatic life.

Zebra mussels are dime-sized, shelled animals that attach themselves to anything below the water line. In addition to damaging boating and fishing equipment, they’ll foul rocky shorelines with their sharp shells, making it hard to walk or wade along the shore. White perch, native to the Atlantic coast, were accidentally introduced into Wilson and Cheney reservoirs as contaminants in shipments of stocked fish. Since then, they have been spread to other reservoirs by unwary people.

For more details, go to ProtectKS Waters.org.

card shower

A card shower has been requested for **Delores Peter’s** 85th birthday on Monday, June 30, 2014. Cards may be sent to her at 105 E. Colledge Drive, Room 102, Colby, Kan. 67701.

kanorado senior center

The **Kanorado Senior Center** is in need of cash donations and donations for our benefit auction on July 12. Donations will help keep the center functioning. Their mailing address is the Kanorado Senior Center, Box 176, Kanorado, Kan. 67741 or for donations call Tammy at the center (785) 399-2348, Connie Sheldon (785) 399-2402, John Veselik (785) 399-8016, Sally Pettibone (785) 399-2337 or Jessica Colby (785) 399-8014.

genesis and salvation army

Genesis and Salvation Army are available year round to help those in need. Call (785) 890-2299 to speak to a volunteer.

activities

Tours of the 1907 Victorian House at 202 W. 13th are from **1 to 5 p.m. Wednesday through Monday**. Closed on Tuesday.

The **High Plains Museum**, 1717 Cherry Ave., is open from **9 a.m. to 5 p.m. Monday, Wednesday through Saturday and from 1 to 5 p.m. Sunday**. Closed Tuesdays.

The **Carnegie Arts Center** is open from **10 a.m. to 5 p.m. Tuesday through Saturday, 1 to 4 p.m. on Sunday and 1 to 6 p.m. on Monday** at 120 W. 12th. The center is always in need of hosts and hostesses on Sundays. New monthly exhibits and you are invited to visit the gift shop.

The **Goodland Public Library** is open from **10 a.m. to 8 p.m. Monday through Thursday** and from **10 a.m. to 5 p.m. Friday and Saturday**. For information call (785) 899-5461 or stop by the library.

Big Brothers/Big Sisters of Sherman County is seeking mentors and children to mentor. Call 890-3665.

The **Good Sam Family Support Council** meets at **7 p.m.** the second Thursday of every month at the Goodland Elks Lodge. Meetings are open to all interested people. For information call 890-3117 or 890-5936.

Breast Cancer Support Group meets at **5:30 p.m. the second Monday** of the month. Any woman with cancer is welcome. Call Norma at 890-6629 for more information.

The **Goodland Activities Center** has the daily activities. For information call 890-7242. Memberships options for everyone including day passes for \$5. Visit goodlandgac.com or stop by 808 Main. The hours are 5:30 a.m. to 8 p.m. on Monday through Thursday, Friday 5:30 a.m. to 6 p.m., Saturday 10 a.m. to 6 p.m. and Sunday 1 to 5 p.m. **Aerobics** are at 5:30 a.m. on Monday and

the calendar

calendar

A free **sack lunch** will be provided to kids at **12:30 p.m. every Wednesday** before the summer matinee at The Sherman Theatre. A movie pass is not required to get a sack lunch.

The Tenth Annual **Outdoor Youth Skills Day** will be **Saturday**. Call Troy Mannis at (785) 821-1838 for information.

Prairie Land Food sign up will be until Monday. Distribution is 1 to 2 p.m. Saturday, June 28, at Cat’s TnT, 115 E. 9th, or at the Bernadine Johnson residence, located at 704 Walnut. For information call 899-2338, 821-1275, 890-2287, 821-1827, 890-3793 or 899-4278 or order online at www.prairielandfood.com. The

Wednesday. **Insanity class** meets at 5:30 a.m. on Monday, Tuesday, Wednesday, Thursday, Friday and Saturday. **Taekwondo** with Wayne Luckert call for times and dates.

Weight Watchers meets at **5:30 p.m. for weigh in** and 6 p.m. for the meeting every **Tuesday** at the Harvest Evangelical Free Church, 521 E. Hwy. 24. For information call (785) 890-6423.

Goodland Alcoholics Anonymous, 1013 Center. If you drink alcohol, that’s your business. If you want to stop, we can help. Call 821-3826 or 728-7491.

Goodland Al-Anon Family Group meets at **6 p.m. on Fridays** at First Christian Church, 711 Arcade. For information call Alice or Marilyn at 890-5914 or 821-2862. They also meet at Mondays at 6:30 p.m.

The “Freedom Today” group of **Narcotics Anonymous** meets at **8 p.m. Tuesdays, 8 p.m. Fridays and 8 p.m. on Sundays** at 1013 Center. Call 890-8369.

Bird City Alcoholics Anonymous group meets at **6:30 p.m. (Mountain Time) on Fridays** at the Senior Center on 4th Street.

Narcotics Anonymous meets at 6:30 (Mountain Time) on Tuesdays at the Senior Center. Call (785) 734-2734 for more information.

thrift store

The Goodland Churches Thrift Shop, 1002 Main, is open from 10 a.m. to 5 p.m. on Monday through Friday. Donations welcome. The **daily specials** are 50 percent off men’s department on Monday, 50 percent off housewares, furniture, electronics and crafts on Tuesday, 10 cent books on Wednesday, 50 percent off children’s department on Thursday and 50 percent off ladies’ department on Friday. For information call 890-2007.

health department

The Sherman County Health Department at 1622 Broadway is open from 8 a.m. to noon and 1 to 5 p.m.

Prairie Pak will have deli turkey, ham steak, chicken breast (diced or strips), full cooked Angus burgers, chicken thighs, seasonal fresh fruits and vegetables. The specials are a summer griller including ground beef patties, pork tenderloin, pork chops, chicken breast filets, Italian sausage links and top sirloin steaks; chuck steak burgers, breakfast sandwiches, breaded chicken breasts and red velvet cake.

The **Run With the Law** will start with registration at **9 a.m. on Saturday, June 21**, at Goodland High School, 1209 Cherry. Project is to raise money for the Special Olympics Kansas.

Summer matinees will be every two weeks at **1:30 p.m. on Wednesdays** at the Sherman

Monday through Friday.

Blood pressures; infants’, children’s and adults’ immunizations; health assessments for Kan Be Healthy, daycare and school entry; fasting blood sugar and hemoglobin; and family planning available by appointment. Sharps containers are available for a fee. WIC program available. Call 890-4888 or go to www.sherman.kansas.com.

If you have questions, concerns or complaints about child care, call the health department.

Water Testing — The Northwest Local Environmental Protection Group does well evaluations, including testing for bacteria and nitrates. To schedule an evaluation or discuss environmental concerns, call the Health Department at 890-4888.

hospital volunteers

Gift shop hours are 9 a.m. to noon and 1 to 4 p.m.; a.m. and p.m. volunteers are in the gift shop. Today: a.m. Helen Musil and p.m. Debbie Lucas. Wednesday: a.m. Connie Soellner and p.m. Margaret Baalman. Thursday and Friday: None.

early head start

Early Head Start is a state funded program for income eligible families with prenatal mothers and children up to age three. Families participate in a variety of educational activities and receive free medical and dental care.

Services include special needs of children with disabilities. If you have a family member with a special problem, such as drug or alcohol abuse, job loss or other family crisis, your family can qualify. Call 785-672-3125, ext. 187.

preschool

Sherman County Head Start is a free preschool for eligible 3 and 4 year olds. The federally funded program is targeted to families who meet certain economic guidelines and provides hearing, vision, dental and educational screenings. Nutri-

Theatre, 1203 Main. The movie on Wednesday will be “Happy Feet 2” P(G).

The **Kids Cooking Class** is held on the **second Wednesday of each month** from 3:45 to 5:15 p.m. at the 4-H Building. This class is open for second to fifth graders. For information call 890-4880.

senior menu

Today: Taco salad, Mexicali corn, chips and gelatin with fruit. **Wednesday:** Goulash, broccoli cook’s choice complement, bread and fruit crisp. **Thursday:** Turkey roast, mashed potatoes with gravy, seasoned carrots, bread and pineapple upside down cake. **Friday:** Chicken salad sandwich, baked beans, coleslaw, bun and ambrosia fruit salad.

tious meals are served, and parents are encouraged to get involved in their children’s education. For information call 890-2552.

mops

MOPS (Mothers of Preschoolers) meets the first Monday of every month October thru May. Meeting time: 6 p.m. -7:30 p.m. at the Harvest Evangelical Free Church; 521 E Highway 24; Goodland. For more information email goodlandmops@gmail.com or call (785) 890-6423.

crimestoppers

If you have information about any crime, call the Goodland Area Crime Stoppers “Look Line” at 899-5665. Your call will be confidential and you will not be asked your name. If the information results in the arrest and/or conviction of those involved, you could be eligible for a reward of up to \$1,000. Goodland Area Crime Stoppers is a nonprofit organization formed by citizens against crime.

The police department can also be called at 890-4570.

family shelter

The Northwest Kansas Domestic and Sexual Violence Services provides help day or night to victims of domestic violence and sexual assault. For information or help, call (800) 794-4624. In the Colby area, call (785) 443-1130.

animal shelter

Lost a pet? Call 890-4575 or go to www.petfinder.com and be sure to enter the Goodland zip code 67735. You can also call the Goodland Police Department at 890-4570 or Northwest Kansas Animal Shelter at 899-4398. Interested in adopting a pet? Call the animal shelter or go to the website www.nwkasgoodland.webs.com.

For personalized dog/cat tags for \$12 each email LafieLd13@aol.com

birth

Liam Owen McCool

Liam Owen McCool was born on Thursday, June 5, 2014, at Citizens Medical Center in Colby. He weighed 7 pounds, 4 ounces and was 19.25 inches long.

His parents are Jennifer Rose and

John Paul McCool Jr. of Goodland and his grandparents are John P. and Kristine J. McCool of Goodland and Frank Shandrick of North Glen, Colo., and Vicki Williams of Lakewood, Colo.

Rick Lee Peters

Rick Lee Peters, 65, of Victoria, passed away on June 3, 2014, at the Hays Medical Center. Rick was born March 4, 1949, to Lloyd and Donna Peters. He grew up in Osborne until he and his parents moved to Goodland in the summer of 1966. He met his future wife Jill at that time. Rick graduated from Goodland High School with the class of 1967. In 1969, he enlisted in the Navy. After boot camp, Rick returned to Goodland and was united in marriage to Jill Ann McCall, the daughter of Marjorie McCall and the late Alvin McCall, on September 30, 1969.

Rick later attended The University of Kansas, graduating in 1984 with a Masters in Fine Art with Distinction in Painting and Drawing. He taught at Southwestern College in Winfield for 9 years. Rick was Artist in Residence at the Amarillo Museum of Art while teaching at Amarillo College in Amarillo, Texas for 4 years. Four more years followed in Kansas City, Missouri,

working at the Kemper Museum of Contemporary Art while teaching at Longview College in Lee’s Summit, Missouri. Rick and his wife moved to Great Bend where he taught at Barton Community College until he retired. He continued to produce art, exhibiting his works as he had done throughout his career.

Rick was a very talented, creative artist with a wonderful smile and sense of humor, with a great laugh. He was the best husband and father and will be greatly missed by his family and many friends.

Rick was preceded in death by his parents. Survivors include his wife and soul mate of 44 years, Jill, of Victoria. Son Tim Lehi (Kelly) of San Francisco, CA; daughter Aimee Susanne (Ben) Maestas and his four precious granddaughters Susanne Rose, Sarah Marie, Anna Elisabeth, and Mariam Elaine, all of Victoria; and brother Terry Peters of Topeka.

A memorial service is pending with burial in the Downs Cemetery in Downs, KS.

How healthy are the trees in your yard?

One of the most important clues in determining the health of your tree is the amount of new growth that the tree produces.

A healthy tree should have a minimum of four to six inches of new growth each year. Check branches with the tips in the open and not shaded by the tree itself. Anything less than four inches on the majority of its branches suggests the tree is under a great deal of stress.

So, how do you tell where the new growth stops?

Look for a color change in the stem. New growth is often greener than that from the previous year. There is also often an area of what



dana belshe

- ag notebook

looks like compressed growth where growth transitions from one year to the next.

Lastly, look at leaf attachment!

Leaves are only produced on current seasons’ growth. Therefore, new growth stops where leaves are no longer attached directly to the twig but to side branches. However, pay attention as leaves may appear to be attached directly to last year’s

growth but are actually borne on short spurs. If you look closely, you can tell the difference.

All these clues tell you are whether a tree is under stress or not. It does not tell you what is causing poor growth. The most common cause by far is environmental stress caused by the warm, dry winters and hot, dry and windy spring and summer.

Stress is cumulative. In other words, trees may not have completely recovered from stressful conditions that occurred several

years ago. The accumulating stress may have damaged root systems. In some cases, root systems were damaged enough that those trees may struggle as we enter summer. Though the roots were able to keep up with moisture demands during the cooler spring weather, they may not be able to as temperatures rise. Such trees may suddenly collapse and die or slough off branches they can no longer support. If possible, water to a depth of 12 inches every couple of weeks if we do not receive rain in order to avoid further stress.

Visit us on Facebook! Goodland Star News

Specials for the week June 13-19

Drinks included. Dine-in or carry out!

Friday, June 13: Nacho Grande

Saturday, June 14: Hot Chicken Fried Steak

Sunday, June 15: BBQ Ribs

Monday, June 16: Meatloaf

Tuesday, June 17: Chicken and Rice Casserole

Wednesday, June 18: Beef and Noodles

Thursday, June 19: Potato Bar

Jct. of Hwys. 27 and 40, Sharon Springs, Kansas • Phone: 785-852-4664



American Profile

Celebrating Hometown Life

See American Profile magazine in this week’s issue of

Your sponsorship could be right here!

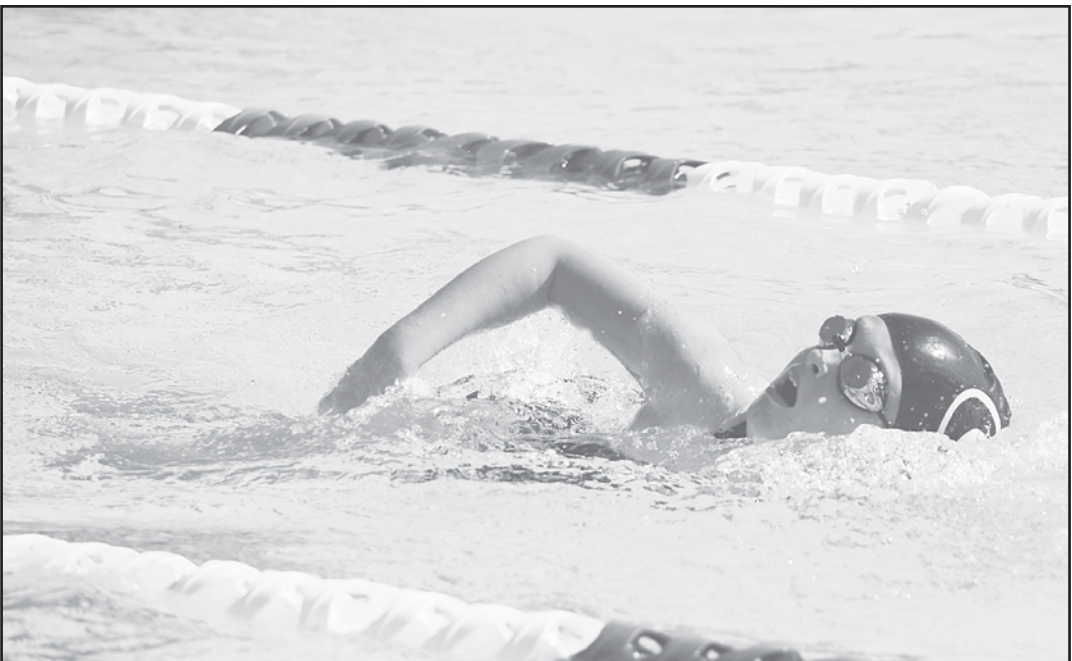
(available in local area only)

Brought to you by:

The
Goodland Star-News

Call The Goodland Star-News today for more information!
(785) 899-2338

Swim team action



Swimmers competing at the swim meet held at Steever Water Park on Saturday morning. There were eight swim teams competing. Swimmers that compete are between the ages of eight and under to 18.

Photos by Kevin Bottrell/The Goodland Star-News

Library has new titles, movies for their readers

The Goodland Public Library, 812 Broadway, has added new materials available to its patrons.

Added in non-fiction are “The Afterlife of Billy Fingers: How my bad-boy brother proved to me there’s life after death” by Annie Kagan; “A Million Miles in a Thousand Years: What I Learned while Editing my Life” by Donald Miller; “Hope for Today, Promises for Tomorrow: Finding Light beyond the Shadow of Miscarriage or Infant Loss” by Teske Drake; “The Waiting: the true story of a lost child, a lifetime of longing and a miracle for a mother who never gave up” by Cathy LaGrow; “Coping with Infertility, Miscarriage and Neonatal Loss: finding perspective and creating meaning” by Amy Wenzel; “Modern Pioneering: more than 150 recipes, projects and skills

for a self-sufficient life” by Georgia Pellegrini; “1,000 Places to see in the United States and Canada before you Die” by Patricia Schultz and “365th Fighter Squadron in World War II: in action over Europe with the P-47” by Kent D. Miller.

New audio books are “The Target” By David Caldacci; “The Lincoln Myth” by Steve Berry; “I’ve Got you Under my Skin” by Mary Higgins Clark; “Walking on Water” by Richard Paul Evans; “The One and Only” by Emily Giffin; “Hopeful” by Shelly Shepard Gray; “The Good Guy” by Dean R. Koontz; “River Road” by Jayne Ann Krentz; “Night Diver” by Elizabeth Lowell; “Field of Prey” by John Sandford; “Keep Quiet” by Lisa Scottoline; and “Carnal Curiosity” by Stuart Woods.

DVD’s added are “Victory at Sea,”

“The Dragon Pearl,” “Hemingway and Gellhorn,” “Kingdom of Heaven,” “The Monuments Men,” “No Time for Sergeants,” “Operation Pacific,” “Paths of Glory,” “The Sapphires,” “Justice League Justice on Trial,” “Free Birds,” “Khumba” and “The Nut Job.”

Fiction titles added are “Robert B. Parker’s Cheap Shot” by Ace Atkins; “The Lincoln Myth: a novel” by Steve Berry; “Starfire: a novel” by Dale Brown; “Four Friends” by Robyn Carr; “Wild Storm” by Richard Castle; “Tom Clancy’s Op-center, Out of the Ashes” by Dick Couch; “Ghost Ship” by Clive Cussler; “The Skin Collector: A Lincoln Ryme novel” by Jeffrey Deaver; “Walking on Water: the Fifth Journal of the Walk Series” by Richard Paul Evans; “The Hurricane Sisters” by Doro-

thea Benton Frank; “Three Junes” by Julia Glass; “When Darkness Falls” by Heather Graham; “Waking the Dead” by Heather Graham; “Hopeful” by Shelley Shepard Gray; “The One and Only: a novel” by Emily Giffin; “Vertigo 42: a Richard Jury mystery” by Martha Grimes; “Midnight Crossroad/#1” by Charlaire Harris; “Death at the Door” by Carolyn G. Hart; “The Heart’s Pursuit” by Robin Lee Hatcher; “Sniper’s Honor: a Bob Lee Swagger novel” by Stephen Hunter; “Live to See Tomorrow” by Iris Joansen; “Mr. Mercedes: a novel” by Stephen King; “The Hidden Child: a novel” by Camilla Lackberg; “The Keeper: a novel” by John T. Lescroart; “The Last Bride” by Beverly Lewis; “When We Met” by Susan Mallery; “The Last Kind Words Saloon: a novel”

by Larry McMurtry; “A Family Affair” by Fern Michaels; “Resistant” by Michael Palmer; “Unlucky 13” by James Patterson; “A Moment in Time” by Tracie Peterson; “The Kracken Project” by Douglas J. Preston; “Not Quit a Wife: by Mary Jo Putney; “The Kill Switch: a Tucker Wayne novel” by James Rollins; “Field of Prey” by John Sandford; “The Heiresses” by Sara Shepard; “Saucer: Savage Planet” by Stephen Coonts; “A Shiver of Light: a Merry Gentry novel” by Laurell K. Hamilton; “Kill Order” by James Dashner; “The Scorch Trials” by James Dashner; “Paper Towns” by John Green; “Underhand” by J. J. McIsaac; and “Tesla’s Attic (#1)” by Neal Shusterman.

New large print editions are “Distortion” by Terri Blackstock; “Undetected” by Dee Henderson; “The Mark of Evil” by Tim F. LaHaye;

“The Last Bride” by Beverly Lewis; “Still Life with Bread Crumbs” by Anna Quindlen; “Bridge to Haven” by Francine Rivers; “The Longest Ride” by Nicholas Sparks; “Seasons of Tomorrow” by Cindy Woodsmall; “By Its Cover” by Donna Leon; “NYPD Puzzle” by Parnell Hall; “Saddlemates: a Western Story” by Max Brand; “Saucer: Savage Planet” by Stephen Coonts; “A Shiver of Light: a Merry Gentry novel” by Laurell K. Hamilton; “Kill Order” by James Dashner; “The Scorch Trials” by James Dashner; “The Death Cure” by James Dashner; “Paper Towns” by John Green; “Underhand” by J.J. McIsaac; and “Tesla’s Attic” by Neal Shusterman.

matters of record

Real estate

The following real estate transactions have been reported by the Sherman County Register of Deeds.

Michael D. Irvin as Conservator of Rachel N. Irvin conveys and warrants to Jeffrey H. Deeds and Jill M. Deeds, Lots 1, 2 and 3, and N10’ of Lot 4, Block 1, CK&N Addition to Town of Goodland.

Matthew K. O’Brien and Heather D. O’Brien convey and warrant to Jeffrey H. Deeds and Jill M. Deeds, Lots 1, 2 and 3, and N10’ of Lot 4, Block 1, CK&N Addition to Town of Goodland.

Daniel D. O’Brien conveys and warrants to Jeffrey H. Deeds and Jill M. Deeds, Lots 1, 2 and 3, and N10’ of Lot 4, Block 1, CK&N Addition to Town of Goodland.

Shawn P. O’Brien and Diane A. O’Brien, convey and warrant to Jeffrey H. Deeds and Jill M. Deeds, Lots 1, 2 and 3, and N10’ of Lot 4, Block 1, CK&N Addition to Town of Goodland.

Solon L. Bloomer Family Partners Limited Partnership II, to Pillango Investments, LLC, all of Sec.21, T9S, R38W, less a portion of S/2 of Sec.21, T9S, R38W.

SLB Limited Partnership, to Pillango Investments, LLC, all of Sec.21, T9S, R38W, less a portion of S/2 of Sec.21, T9S, R38W.

Daniel K. Brack and Nicole L. Brack convey and warrant to Deidra S. Mitchek, Lots 18, 19, 20 and 21, Block 4, First Addition to City of Goodland.

John R. Baker and Kathy L. Baker convey and warrant to Homestead Heritage L.P., the NE/4 of Sec.25, T6S, R42W.

Dale Murphy conveys and warrants to Tracy N. Ostmeier and Linc Ostmeier, the N15’ of Lot 15, all of Lot 16, S20’ of Lot 17, Block 39, Second Addition to City of Goodland.

Wade L. Heidemann and Diane L. Heidemann convey and warrant to Richard A. Stefan, Lot 9, Block 10, Rosewood Addition to City of Goodland.

Ricky R. Rogers, Trustee of the Ricky R. Rogers Revocable Trust UTA August 17, 1999, to Paul H. Niblock and Jenny Len Niblock, the NW/4 of Sec. 23, T8S, R37W.

Linda R. Rogers, Trustee of the Linda R. Rogers Revocable Trust UTA August 17, 1999, to Paul H. Niblock and Jenny Len Niblock, the NW/4 of Sec. 23, T8S, R37W.

Robert Simmons and JoAnn Simmons, to Bob E. Simmons and JoAnn Simmons, the W/2 of Lots 1, 2 and 3, Block 31, Second Addition to City of Goodland, AKA 115 E. 5th.

College looking for singers

Colby Community College is attempting to contact former members of the Sunflower Singers performance group. The Singers, under the direction of Randy Berls, will be performing at the college’s Founder’s Day event on Saturday, July 12. Call Berls at 460-5520 or (785) 890-0082.

Visit us on Facebook
899-2338

Honor rolls named

Colby Community College has announced its spring 2014 Honor Roll recipients.

To be on the Dean’s Honor Roll a student must earn at least 15 credit hours with no failing grades and have a 4.0 grade point average.

Those on the President’s Honor Roll from Goodland include Angie

have a 3.75 to 3.99 grade point average. To be on the President’s Honor Roll a student must earn at least 15 credit hours with no failing grades and have a 4.0 grade point average.

Those on the President’s Honor Roll from Goodland include Angie

Jones and Sheldon Nelson, Kanorado Josephina Garcia and Amanda Diaz of Burlington.

Those named to the Dean’s Honor Roll include Garth Helton of Goodland and Heidi Pletcher of Sharon Springs.

corrections

The Goodland Star-News will correct any mistake or misunderstanding in a news story. Please call our office at (785) 899-2338 to report errors.

We believe that news should be fair and factual. We want to keep an accurate record and appreciate you calling to our attention any failure to live up to this standard.

Enjoy a night at the movies!

Colby

Goodland

Goodland

www.goodlandnet.com/movies

Sherman

1203 Main - Phone 899-2100

Tonight 7 PM:

X-Men: Days of Future Past 3D (PG-13)

Starts Friday 7 PM: Mom’s Night Out (PG)

COME & GO RECEPTION

Public come and go reception for Michael Solomon, outgoing Economic Development Director / Chamber of Commerce Director, on Thursday June 26, 2014 from 3-5 p.m. at the City Building.

Cleary has been building solid relationships for over 36 years for good reason — we treat our Clients like family.



CALL US FOR A FREE CONSULTATION!
785-462-2023
990 S. Range Ave.
Colby, KS 67701

BUILDING SALE!
30’x40’x13’ • \$13,085
42’x72’x15’ • \$24,310
60’x104’x17’ • \$49,825

800-373-5550 | ClearyBuilding.com

25th annual Slice of Life

Slice of Life 25th annual Benefit Auction & Golf Tournament, sponsored by the Goodland Medical Foundation

June 27 & 28, 2014

• Benefit auction: Friday, June 27, 6:30 p.m. MT

At the Goodland Elks Lodge in Goodland, tickets \$50/person. (Live auction, meal and beverages. Bid on great items, look for new mobile bidding option. Dance to the Jimmy Dee Band.)

• Golf Tournament: Saturday, June 28, 8:30 a.m. MT

(Shotgun start at Sugar Hills Golf Club in Goodland. 3 person team. \$150/person.)

More information at: www.goodlandregional.com or contact Joyce Moore, Goodland Medical Foundation at (785) 890-2206, or any foundation member.

All proceeds will benefit the Goodland Medical Foundation.

Goodland Medical Foundation

Slice of Life

RICHARDSON'S

HOMESTEAD

REALTY AND AUCTION

Amazing New Listings!

311 Washington....Executive brick ranch! Over 1600 sq ft on one level offering 3 bedrooms, 2 baths, gourmet kitchen with appliances, laundry room with washer and dryer, new hardwood floors through most of house, french doors to beautiful patio and backyard. Partial basement for storage, attached double car garage.

317 Sycamore....Rosewood Addition. 3 bedroom, 2 bath brick ranch with oversized double car attached garage, large living room, kitchen with appliances and dining area, central heat and air, privacy fenced yard, full unfinished basement. \$150,000

102 Circle Drive....Maintenance free exterior! Corner lot with beautiful landscaping. Open floor plan with great room featuring kitchen, dining area and living room, two bedrooms, 1 1/2 baths and laundry on main floor. Basement is finished with big family room, two more bedrooms and bath. Double car attached garage, sprinkler system. The remodeling has all been done....just move in! \$185,000

Here's a few of our other fine listings:

1402 Walnut.....\$74,600

1528 Colorado.....\$50,000

414 Main.....\$120,000

512 West 12th.....\$68,000

295 Rd. 73, Kanorado....\$70,000

1522 Caldwell.....\$65,500

785-899-2328 800-974-2426

1023 Main Street ~ Goodland, KS

Terry Richardson and Donna Moore

E-mails: Terry or Donna@goodlandhomestead.com

www.goodlandhomestead.com

from our viewpoint...

Era of interference should be ended

Reinvade, reoccupy, and re-destroy Iraq. That is the solution to the inevitable civil war that happens when the U.S. pulls out? Will we do it until either Iraq is remade in our image or until the U.S. economy, political environment, and culture is also destroyed?

Eight years ago a group of Portland peace activists raised the funds to bring together a number of experts to produce an exit strategy from Iraq. Ours was done, as it turns out, at the same time that the Iraq Study Group did their work. We were just unaware that the government had finally at long last decided maybe it was time to think Exit Plan. Duh. I expect we were all simply inspired and challenged by the insightful and cogent strategy published shortly before in the widely cited peer-reviewed journal, The Onion.

Still, despite the obvious – and our group, which was informed by military experts and conflict transformation experts alike, noted well that no matter when the US left the Iraqis would have a bloody civil war and settle on a new autocratic government that shot its way to power and repressed its citizenry – it took the US three more years to begin to leave, longer to finish leaving, and now the correctly predicted violent settling-out process is happening in earnest.

Naturally, the US conflict industry is dismayed when the US isn't spending every last centavo on weaponry and other military profiteering contracts. Time to respond! Go bomb! Send in "advisers." No-fly attacks, hunt down insurgents with drones and war jets. Remobilize US troops because if there is one glaringly blatant truth, proxy troops no longer work in this post-Cold War era. They seemed to be Just Fine and a great way to drain the American taxpayer when their loyalty was fairly dependable.

Our supported administrations are now routinely driven from power by the ballot, the bullet, or the bodies--that is, by the elections we no longer control, by violent insurgencies, or by civil society nonviolent revolution.

Stop it. Stop interfering in other countries. Stop sending arms. Stop the drones. Just support civil society with helpful and requested aid, never guns or tanks or war jets or anti-insurgent helicopters or anti-government rocket-propelled grenade launchers. And for any chance of success, keep U.S. troops at home. Let Iraqis work it through and then try to be a friend to their citizenry with our goods of life. It may not be as fast as the "I've got a gun to your head so go vote!" model of spreading "democracy" that is favored by our leaders and our military industrial congressional complex, but it is the only one that actually works. Can we please start now?

– Dr. Tom H. Hastings, director of PeaceVoice: www.peace-voice.info

Letter Policy

The Goodland Star-News encourages and welcomes letters from readers. Letters should be typewritten, and must include a telephone number and a signature. Unsigned letters will not be published. Form letters and letters deemed to be of no public interest or considered offensive will be rejected. We reserve the right to edit letters for length and good taste. We encourage letters, with address and phone numbers, by e-mail to: <star.news@nwkansas.com>.

The Goodland Star-News

(USPS No. 222-460. ISSN 0893-0562)

Member: Kansas Press Association

Inland Press Association Colorado Press Association
National Newspaper Association

e-mail: star.news@nwkansas.com

Steve Haynes, President
Kevin Bottrell, Editor
Pat Schiefen, Society Editor
Advertising Department

Jessica Harenberg, Reagan Osban and Angela Bonham
Sheila Smith, Circulation Manager

Nor'west Press

Richard Westfahl, General Manager
Gary Stewart, Jim Bowker, James Jackson
Kris McCool, Tracy Traxel, Rebecca Satterlee
and Judy McKnight



nwkansas.com

N.T. Betz, Director of Internet Services
(nbetz49@nwkansas.com)

Evan Barnum, Systems Admin. (support@nwkansas.com)

Published every Tuesday and Friday except the days observed for New Year's Day, Memorial Day, July 4th, Labor Day, Thanksgiving and Christmas Day, at 1205 Main Ave., Goodland, Kan. 67735.

Periodicals postage paid at Goodland, Kan. 67735; entered at the Goodland, Kan., Post Office under the Act of Congress of March 8, 1878. POSTMASTER: Send address changes to The Goodland Star-News, 1205 Main Ave., Goodland, Kan. 67735.

TELEPHONE: (785) 899-2338. Editorial e-mail: star-news@nwkansas.com.

The Goodland Star-News assumes no liability for mistakes or omissions in advertising or failure to publish beyond the actual cost of the ad.

SUBSCRIPTIONS: In Sherman County and adjacent counties: three months, \$29; six months, \$46; 12 months, \$81. Out of area, weekly mailing of two issues: three months, \$39; six months, \$54; 12 months, \$89 (All tax included). Mailed individually each day: (call for a price).

Incorporating:

The Goodland Daily News

1932-2003

The Sherman County Herald

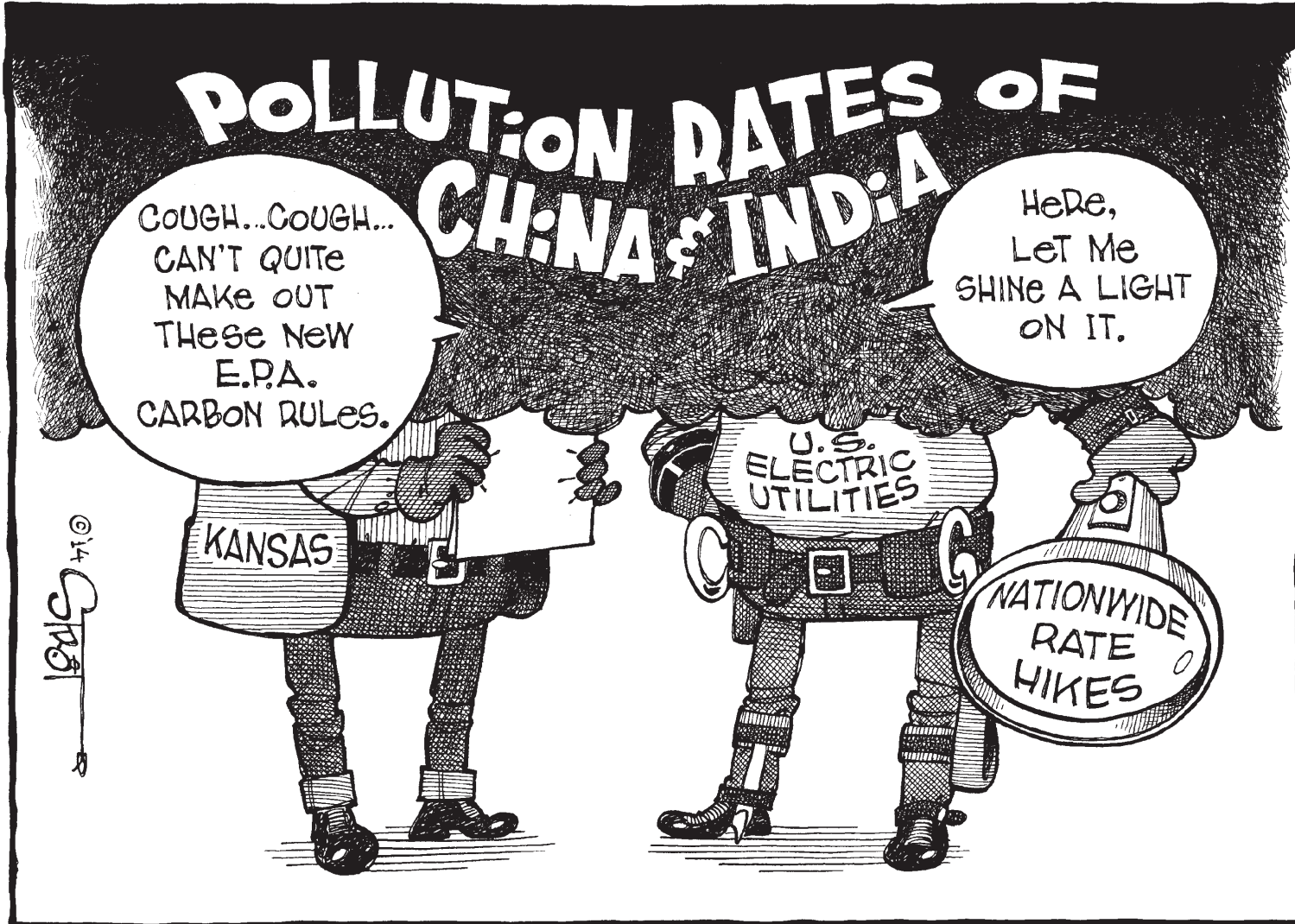
Founded by Thomas McCants
1935-1989

THE SHERMAN COUNTY STAR

Founded by Eric and
Roxie Yonkey
1994-2001

Nor'West Newspapers

Haynes Publishing Company



Letters of thanks

To the Editor:

I have the distinct privilege to work with some exceptional individuals, both youth and adults, who are ever so grateful to the community your newspaper reaches. It is my hope that I can express our thanks to the community for hosting two AFS exchanges students.

Host families, teachers, coaches, church members, and many others are to thank for the success of Paulina's and Tove's experiences. Thank you also to the High Plains Museum for sharing our AFS story in its recent exhibit. The community is a trove in an unassuming package perfectly sized to enter the hearts and minds of the youth of the world. Thank you for taking the time to show the world who we are.

These international high school students attended Goodland High School, lived with host families and discovered what Goodland is all about. The students are now preparing to take Goodland back to Sweden and Germany. Before their return to their home countries, they have left words of thanks.

AFS-USA is always looking for supportive host families. Over the past decades the community has created more than 100 global connections through AFS. By hosting an AFS Exchange Student, Goodland helps build bridges of intercultural understanding at home and abroad while connecting with outstanding young people.

AFS has been a leader in international high school student exchange for more than 65 years. Each year, AFS-USA sends approximately



from our readers

• to the editor

1,100 US students abroad, provides \$3 million in scholarships and financial aid, and welcomes 2,300 international high school students who come to study in US high schools and live with host families. More than 5,000 volunteers in the US make the work of AFS possible.

For more information about how to host a student, study abroad, or volunteer with AFS, call 800-AFS-INFO or visit www.afsusa.org.
Nickolas Evert

Dear Goodland community:

Thank you so much for having me. It's been a great year for me. I felt totally welcomed by every single one of you. I want to thank Goodland High School and all the teachers and coaches I got to work with. I appreciate your support through the whole year. A big thank you goes to Coach Livengood for helping me a lot the first months. I also want to thank my friends Maddie, Nicole and Raquel for the many rides they have given me.

Thank you to the First Baptist Church of Goodland and the youth group of Chuck and Janet Redlin I got to go to.

I also want to thank my liaison, Nick Evert, for always being there for me. I want to thank

all my great friends that I met this year. I am going to miss you guys.

Last, but not least, my biggest thank you goes to my wonderful family, Max and Brenda Linin and Bill, Rachel, Nathan, Halli, Joel and Gauge for being the best host family I could have ever asked for.

Paulina Wagner

Dear Goodland community:

My name is Tove Vernberg and I was an exchange student from Sweden. I had an amazing year in Goodland, Kansas, and there are so many people I want to thank for that.

First of all, I want to thank Goodland High School for letting me attend their school this year. Then I would like to thank the AFS club in the high school for letting me be a part of their club. I would also like to thank my liaison, Jeanne Irvin, for always being there for me and helping me through this year.

And most of all I would like to thank my host family, Bryce, Jessica, Grace, Eve, and Henry Cole. It has been amazing living with you and I couldn't have asked for a better host family.

And another very important group I would like to thank is all my friends. My year would have been completely different (in a bad way) without you!

I could not have gotten to a better place than Goodland, and I will for sure be back sooner than you expect.

Tove Vernberg

A sunny trip to Maine



steve haynes

• along the sappa

Views of New York are spectacular as the train climbs up and over the Hell Gate Bridge and works its way downtown to Penn Station. More views back to Manhattan after we climb out of the tunnels, then the train winds up to 130 southbound. We pass through Philadelphia, Wilmington and Baltimore, then glide into Washington, where we change trains.

This is one time I'm more than glad we're not at an airport. We're overloaded, but a "red cap," or baggage porter, takes us, bags and all, around to the next platform, where we can board our car for Chicago. Whole thing takes five to 10 minutes, and we don't even go into the depot.

I'd forgotten how green and lush and rugged the Potomac valley is. We pass miles of history, alongside the Chesapeake and Ohio Canal of 1850, the nation's original artery of commerce between the coast and the "northwest territories," what we think of as the old Midwest. The canal tied rivers and seacoast together in a day when commerce moved mostly by water.

Then we're at Harper's Ferry, where John

Brown of Kansas seized the government armory in 1859, hoping to take the rifles stored there and arm a slave rebellion in the South. The government set an army colonel, Robert E. Lee, to put down the rebellion.

Brown was hanged, and the war had to wait a couple of years.

Soon, our train is into the teeth of a grade nearly as tough as any in Colorado or the Sierras. Then we top out and drift down to the birthplace of the Ohio, Pittsburg, which calls at midnight.

We sleep across Ohio, wake up in Indiana, where we find the train losing time amidst a fleet of freights. We're into Chicago an hour late, giving us four hours to walk, find a church and eat lunch. On the way back, we buy popcorn which is too good to be true, then settle into the Zephyr for McCook, via Galesburg, Ottumwa and Omaha.

We have dinner in the dinner, talking with a woman from Virginia on the way to San Francisco to see her sister. In the diner, they have to fill every table, so you never know who you'll sit with. It's almost always fun.

Iowa is beautifully green in the setting sun, then it's dark and I've time to write in the dark. After nine days, it'll be good to be in our own bed, the cats should be happy to have us back and there'll be a paper to do.

where to write

U.S. Sen. Pat Roberts, 109 Hart Senate Office Building, Washington D.C. 20510. (202) 224-4774; website – roberts.senate.gov.

U.S. Sen. Jerry Moran, 354 Russell Senate Office Building, Washington, D.C. 20510. (202) 224-6521; Fax (202) 228-6966. website – <http://moran.senate.gov>.

U.S. Rep. Tim Huelskamp, 1st Congressional District, 126 Cannon House Office Building, Washington D.C., 20575-1601. (202-225-2715) Website – <https://huelskamp.house.gov>.

State Rep. Ward Cassidy, State Capitol Building Rm 151-S, 300 SW 10th, Topeka, Kan. 66612. Phone (785) 296-7616, home (785) 332-2850; e-mail address ward.cassidy@house.ks.gov.

State Sen. Ralph Ostmeyer, State Capitol Building, Rm. 136-E, 300 SW 10th, Topeka, Kan. 66612. (785-296-7399; e-mail address ostmeyer@senate.state.ks.us.

Kansas Attorney General, 301 S.W. 10th, Lower Level, Topeka, KS 66612-1597 (785) 296-3751 Fax (785) 291-3699 TTY: (785) 291-3767

kansas classifieds

For Sale
SALE PIANOS! We've selected a dozen of our nicest pianos, then slashed the prices! Check out the deals at piano4u.com. Mid-America Piano, Manhattan. 800-950-3774

Help Wanted
DRIVERS WANTED NOW Multiple Locations throughout Oklahoma Haul Railroad Crews 21+, Valid Driver's License, Clean MVR Drug & Background Checks Apply Online: www.RCXhires.com

Help Wanted
Want a Career Operating Heavy Equipment? Bulldozers, Backhoes, Excavators. "Hands On Training" & Certifications Offered. National Average 18-22 Hourly! Lifetime Job Placement Assistance. VA Benefits Eligible! 1-866-362-6497

Help Wanted/Truck Driver
Drivers - CDL-A. Train and work for us! Professional, focused CDL training available. Choose Company Driver, Owner Operator,

Lease Operator or Lease Trainer. (877) 369-7885 www.CentralTruckDrivingJobs.com

Help Wanted/Truck Driver
Drivers- \$\$ TRY SOMETHING DIFFERENT \$\$ Get home weekly with CTS! Great pay and benefits. Call Kevin today 877-325-4996 ext 211. Central Transportation Services www.ctsco.com

Help Wanted/Truck Driver
"Partners In Excellence" OTR Drivers APU Equipped Pre-Pass EZ-pass passenger policy. 2012 & Newer equipment. 100%

NO touch. Butler Transport 1-800-528-7825 www.butlertransport.com

Help Wanted/Truck Driver
Quality Drive-Away hiring drivers for South Hutchinson and Salina locations. \$250 Sign-On Bonus! Deliver vehicles nationwide with plenty of reload opportunities! No CDL or truck required! Commercial experience preferred but not required! Apply online at QualityDriveAway.com or call 1-866-764-1601 today!

Misc.

CANADA DRUG CENTER. Safe and affordable medications. Save up to 90% on your medication needs.

Call 1-800-908-4082 (\$25.00 off your first prescription and free shipping).

The Space You Need



GARAGE | GENERAL STORAGE | HOBBY SHOP

The Style You Want

If you're running out of space in your home, it's time to talk with Morton about a new building. From basic storage buildings to garages that complement your home, Morton will work with you from concept through completion to ensure your project runs smoothly & results in a quality building.

Eight offices serving Kansas
800-447-7436
mortonbuildings.com



800-447-7436 • mortonbuildings.com

WILD WEST FESTIVAL
July 2nd through July 5th
At Hays Municipal Park
Hays, KS
Wednesday, July 2nd * 9:30pm * Craig Morgan
Wednesday, July 2nd * 7:30pm * Chase Rice
Thursday, July 3rd * 9:30pm * Brett Eldredge
Saturday, July 5th * 9:00pm * Hairball
\$15
One \$15 Ticket is your pass to all events.
Tickets available at
www.wildwestfestival.com
Friday, July 4th * 10 p.m. * Fireworks Display

CONSTRUCTION EQUIPMENT AUCTION
THURSDAY, JUNE 26
Bidding starts to close at 10 a.m. CDT
BID NOW!
purple wave auction®
100+ ITEMS SELLING WITHOUT RESERVE! Including: backhoes, dozers, dump trucks, excavators, graders, heavy trucks, loaders, mixer trucks, rollers and more. 10% buyer's premium. **866.608.9283**

The Goodland Star News Service Directory

NEW SYSTEM PROFESSIONAL WINDOW CLEANING
Serving Northwest Kansas & Northeastern Colorado since 1992!
(785) 462-6995 OR (800) 611-6735
egriffith@st-tel.net
www.mywindowcleaner.net
Eldean and Janet Griffith • PO Box 692, Colby, KS

NEW LOCATION.... NEW PRODUCTS!
All my jewelry left in stock is on sale 50% off or more...excludes body jewelry. Great gifts!
G&G/FREDS' PIPES
403 14th, Burlington, CO • Phone: (719) 212-7048 or (719) 342-0503 (after hrs)
Monday-Saturday 9:30 AM-6:30 PM • Closed Sunday
*ALL PIPES AND ACCESSORIES INTENDED FOR TOBACCO USE.

Newbanks Pumps, Inc.
We sell the best and service the rest!
Water Well Drilling & Service
~ Irrigation wells ~ Domestic wells
~ Stock wells ~ Solar Systems
Curt Goble, Owner
Ph: (785) 899-6302 ~ Email: newbankspumps@gmail.com
CO #841 • KS #856 • Elec. Cont. #6127

I make insurance simple.
Lynn A. Hoelting
1610 Main
Goodland, KS 67735
785-899-2378
lynn.hoelting@fbfs.com
Auto | Home | Life | Farm/Ranch | Business | College | Retirement
Farm Bureau Property & Casualty Insurance Company, Western Agricultural Insurance Company, Farm Bureau Life Insurance Company, West Des Moines, IA. *Company providers of Farm Bureau Financial Services MC035C-BL-BG 0-1-16

~SALE! ~SALE!
We have sold our building, so everything goes to the walls!
Starting May 23rd...
40% off
everything until all is sold!
Thanks!
(Cash or in-state checks only)
PJ'S HOME CENTER
1630 Sandy Road (1/2 miles north of I-70 Exit 19, west side of road)
Goodland, KS • PHONE: (785) 899-6241

Goodland Home Health, LLC
Sue McCracken, RN
655-B E. 22nd, Goodland, KS
Office: (785) 890-7658 • Cell: (785) 821-0050
We provide the best care for those individuals due to illness who are unable to care for themselves or their loved ones.

"Seek Shelter Today!"
LIFE • HOME • CAR • FARM • BUSINESS
Jim Alcorn, Agent
1624 S. Main Street
Goodland, KS 67735-0727
Business: (785) 899-2553
www.shelterinsurance.com

DAN BRENNER FORD, INC.
222 W. HWY. 24, I-70 BUSINESS LOOP, GOODLAND, KS
(Toll Free) 800-636-8770
(Business) 785-899-2316 (Fax) 785-899-2317

AMERICAN BUILDINGS
A NUCOR COMPANY
ERIC RICHARDSON CONSTRUCTION INC.
4815 SNEAD DRIVE, BURLINGTON CO 80807
SERVING EASTERN COLORADO AND WESTERN KANSAS
OWNER: ERIC RICHARDSON
CALL FOR PRICING: 719-346-8230
SALES: MIKE RUHS

The Decorating Co.
Interior Design Consultants
Irene Smith & Rochelle Kling
There's no limit to our imagination.
106 E. 11th, Goodland, KS 67735
(785) 890-5441
E-mail: decorco@st-tel.net

Windy Plains Bike Shop
Professional bicycle repairs since 1978!
Parts, accessories and service for all makes.
Pick up and delivery available in Goodland!
TIRED OF FLATS?
ASK ABOUT OUR NO FLAT GUARANTEE!
Harold Sneath
6085 Rd. 17
(785) 899-4786 • (785) 899-5858 (home)
Same day service on most out of town repairs!



Langer Industrial Service
2022 County Road 11 • Levant, KS 67743 • 785-586-2208
Monday - Friday 8 a.m. - 5 p.m.
We pay cash up to for all scrap metal*
Brass • Copper • Aluminum • Batteries • Electric motors • Cars
• Combines • Farm Equipment • Prepared/Unprepared Iron and Tin
• Container Service • Off site baling and car crushing
• Limited pickup service available
*chedule deliveries after normal business hours by appointment when necessary
* Some Conditions Apply

Celebrating 40 years in business!
Hot Brush
Michael S. Boyson
BANNERS - LETTERING - PINSTRIPES - ART
Award winning Quality signs since 1974
204 W. 4th Bird City, Kansas
785-734-2423

Culligan
better water. pure and simple.
• Drinking Systems • Water Softeners (Sales & Rentals)
• Water Coolers • Salt Sales & Delivery
Scheopner's Water Conditioning, Inc.
Goodland & Colby, KS • Toll free: (800) 536-2352

WANTED: DIRTY CARPET
IF YOU HAVE DIRTY CARPET, WE CAN STEAM CLEAN IT.
NO JOB TOO BIG OR TOO SMALL!
• Commercial/Residential
• Advanced Truck Mounted Steam Cleaning Equipment
• Water Damage Restoration
• FREE ESTIMATES
PRO FLOOR CARE
Carpet & Upholstery Cleaning
(785) 462-8313 or (800) 473-4138

Don't touch that dial!
Now's the time to tune-up the heating and air conditioning. Pick up the phone and call us for comfort-enhancing, money-saving heating and air conditioning services.
Call today!
(785) 899-5770
577 W. 31st, Goodland, KS

BURLINGTON FAMILY DENTISTRY
Justin Evanson
DDS, MD
Oral Surgeon
Jason Ehtessabian
DDS, FAGD, PC
Fellow of the Academy of General Dentistry
Dr. Justin Evanson
Dr. E
IV Sedation, Wisdom teeth removal, Implant placement, and Exceptional Comprehensive Dental Care for the Entire Family!
(719) 346-8266
340 14th St. Burlington, CO
www.burlingtonfamilydentistry.net

University engineers design systems for kids

A group of Kansas State University engineers and students is developing technology to improve the health and quality of life for children with severe developmental disabilities.

Steven Warren, associate professor of electrical and computer engineering, and Punik Prakash, assistant professor of electrical and computer engineering, are collaborating with Heartspring Inc. The Wichita-based nonprofit organization is a therapeutic residential and day school program that uses evidence-based and emerging best practices to serve students who often have multiple diagnoses, including autism spectrum disorders, cerebral palsy, speech and language impairments, and other developmental disabilities.

The collaborative work is supported by a five-year \$125,000 grant

from the National Science Foundation's General and Age-Related Disabilities Engineering program.

The professors are using the grant to teach senior design courses where engineering students develop customized devices and software to help children at Heartspring. The professors and students collaborate with Heartspring administrators, clinicians and paraeducators to understand the needs of these children. Most of the children have a primary diagnosis of autism and a majority are nonverbal.

"The intent of this program is to pursue a specific design for a specific child when possible," Warren said. "When we are finished with a design, that individual would then get to keep and use a copy of the design. This is research where you can add immediate benefit to these children's lives."

The design courses began in fall 2011. Nearly 30 professors and students took part on design teams during the 2013-2014 academic year. The courses have involved several engineering departments, including electrical and computer engineering; mechanical and nuclear engineering; biological and agricultural engineering; and industrial engineering.

In some of these courses, students learn about bioinstrumentation and how to develop sensors and hardware to measure physiological signals.

"It's often the students' first exposure to an open-ended design problem," Prakash said. "They identify a specific problem and propose how they can address that. It's a real-world problem, similar to the kind they will work on throughout their professional careers."

Some of the student-developed projects so far have included:

- Smartphone tools and apps to help paraeducators track and record children's behavioral, physiological and cognitive development.
- Wearable sensors, such as accelerometers, that can be placed in shoes or clothing to monitor self-abusive behaviors. The engineers are working with Minyoung Suh, assistant professor of apparel, textiles, and interior design, to develop wearable sensors embedded in clothing.
- A musical toothbrush that tracks brushing activity and plays different songs so children know how long to brush the different areas of their mouths.
- Multi-touch surface computer games that teach children how to sort items, take turns and interact with other children.

- An adjustable stand for these multi-touch surface computers.
- Mattress and bed sensors that track breathing rates, heart rates and movement of children while they are sleeping and potentially can alert para educators of seizures and bedwetting.
- Shoe sensors to quantify the progress of children learning to walk.

Warren and Prakash are continuing the design courses every semester while the grant is active. When possible, the professors take students to Heartspring so they can tour the facility and better understand the usage environments.

Heartspring leaders continue to see the project's potential to make a difference in the lives of the children with special needs.

"All too often clinicians and teachers don't know what is pos-

sible and engineers don't know what is needed," said Gary Singleton, president and chief executive officer of Heartspring. "When the two come together, there is an opportunity to encourage interdisciplinary collaboration and to imagine new solutions to real-world problems."

Other university collaborators include Stephen Dyer, professor of electrical and computer engineering; Kim Fowler, instructor of electrical and computer engineering; Bala Natarajan, professor of electrical and computer engineering; Edwin Brokesh, instructor of biological and agricultural engineering; Garth Thompson, professor of mechanical and nuclear engineering; and Jack Xin, associate professor of mechanical and nuclear engineering.

matters of record

Real estate

The following real estate transactions have been reported by the Sherman County Register of Deeds.

Schulte Bros. Farms, LLC conveys and warrants to Austin Ray Spresser and Abbi Spresser, the S/2 of NW/4 of Sec.30, T7S, R41W.

Morgan Schulte, Marque Schulte, Kevin Schulte and Alyssa Schulte, and Kyle Schulte, all convey and warrant to Austin Ray Spresser and Abbi Spresser, the N/2 of NW/4 of Sec.30, T7S, R41W

Dressman and Mitchek, LTD, to The Dressman Family Revocable Trust, dated November 11, 1999, all mineral interest in: SE/4 of Sec.21, T6S, R41W; NE/4 of Sec.28, T6S, R41W; SW/4 of Sec.28, T6S, R41W; SE/4 of Sec.28, T6S, R41W.

Federal Home Loan Mortgage Corporation, to Carol S. Armstrong and Lincoln K. Purcell, Lots 7, 8, 9 and 10, Block 25, First Addition to City of Goodland, AKA 515 W. 12th.

Phyllis Jean Winslow conveys and warrants to Dennis L. Snethen and Rosemarrie E. Snethen, Lots 7 and 8, Block 75, Subdivision of Blocks to original town of Goodland, AKA 1201 Broadway.

Michael D. Miller and Jodi L. Miller convey and warrant to Apache Hills, LLC, a tract of land in NW/4, Sec.29, T8S, R39W.

Edward A. Flodin and Ashleigh P. Flodin, to Federal Naional Mortgage Association, the N100' of Lots 1, 2 and 3, and N100' of E8' of Lot 4, Block 67, Orginal Town

of Goodland.

Chad Michael DeJong and Lisa Kathleen DeJong convey and warrant to Clifford Junior Smith, Lots 4, 5 and 6, Block 41, First Addition to City of Goodland.

Damon Unlimited, LLC conveys and warrants to Cherry Street Properties, LLC, a tract of land in SW/4 of Sec.20, T8S, R39W; a tract of land in SW/4 of Sec.20, T8S, R39W.

NOW TAKING APPOINTMENTS!



Dr. Alfred Carr
Ear, Nose & Throat

Goodland Regional Medical Center
Specialty clinic in Goodland, KS



Dr. Rachel McArthur
Audiologist

- Hearing, Tinnitus and Balance Diagnostic services
- Clean and repair all makes and models of hearing aids
- Dispense all types of hearing aids
- We accept most major insurances.

Serving the Goodland area
for over 30 years!

Colorado Hearing
Tinnitus and Balance
www.coloradohearingcenter.com

Now Hiring Drivers

Pet and Passenger Program
2011 and Newer Equipment
West and Midwest Runs
Regular Home Time
Paid Weekly



1800 East 50th Street Sioux Falls, SD • 605-332-5531 • jradatz@kandjtrucking.com



Light the way to a cure

Keep the fire of hope burning by purchasing a luminaria candle in memory of someone lost to cancer, in honor of someone still fighting, or in special recognition of someone who has beaten this dreaded disease.

RELAY FOR LIFE-SHERMAN COUNTY

Friday & Saturday – July 18 & 19

7 p.m. to 7 a.m.

at the High School Track behind Vo-Tech

Complete this form and send it along with your donation to:
Sheila Smith, 1205 Main, Goodland, Kan. 67735

Name: _____

Address: _____

City: _____

Daytime Phone: _____

Please join us for the luminaria ceremony at 9 p.m.

\$10.00 per luminaria please!

☐ In honor of ☐ In memory of _____

☐ In honor of ☐ In memory of _____

☐ In honor of ☐ In memory of _____

Total Enclosed: _____

Make checks payable to: The American Cancer Society



X734

DEERE SEASON

\$400 OFF¹

ALL

FOUR-WHEEL STEER
Signature Series Tractors

- 25.5 hp (19 kW)*
- 54-in. high-capacity mower deck with AutoConnect™
- Exclusive 4-wheel steering
- 4-year or 700-hour bumper-to-bumper warranty**

DO DONUTS AROUND YOUR TREES.

X534



- 24 hp (17.9 kW)*
- 48-in. or 54-in. mower deck
- Exclusive 4-wheel steering
- 4-year or 500-hour bumper-to-bumper warranty**

\$400 OFF¹

ALL FOUR-WHEEL STEER SELECT SERIES™ TRACTORS

X304



- 18.5 hp (13.8 kW)*
- 42-in. mower deck
- Exclusive 4-wheel steering
- 4-year or 300-hour bumper-to-bumper warranty**

\$400 OFF¹

ALL FOUR-WHEEL STEER SELECT SERIES TRACTORS

JohnDeere.com/4WheelSteer



AMERICAN IMPLEMENT

COLBY, KS • 405 W. HORTON AVE.....	(800) 532-6529	MONTEZUMA, KS • HWY 56 EAST.....	(620) 846-2215
ELKHART, KS • 364 US HWY 56.....	(800) 445-5917	OAKLEY, KS • 3670 US HWY 40.....	(800) 209-4001
DODGE CITY, KS • 11311 E. WYATT EARP BLVD.....	(620) 227-2165	SCOTT CITY, KS • NORTH HWY 83.....	(800) 779-7244
GARDEN CITY, KS • 2611 WEST JONES AVE.....	(800) 475-4114	SUBLETTE, KS • 1008 WEST LA LANDE AVE.....	(620) 675-2691
GOODLAND, KS • 1104 WEST HWY 24.....	(877) 320-4020	ULYSSES, KS • 2718 WEST OKLAHOMA AVE.....	(800) 356-3460
HUGOTON, KS • EAST HWY 51.....	(800) 544-9833	WALSH, CO • 42494 WEST HWY 160.....	(888) 324-5284
LEOTI, KS • E. HWY 96.....	(620) 375-2621	WHEELER, KS • 685 KANSAS AVE.....	(800) 832-2124

¹Offer valid from March 4, 2014, until July 31, 2014. Get \$400 off the X304, X324 and X534 Select Series and the X734, X739 and X754 Signature Series models. Prices are suggested retail prices only and are subject to change without notice at any time. Dealer may sell for less. Taxes, setup, delivery, freight and preparation charges not included. Attachments and implements sold separately. Shown with the optional equipment not included in the price. Prices and models may vary by dealer. *The engine horsepower and torque information are provided by the engine manufacturer to be used for comparison purposes only. Actual operating horsepower and torque will be less. Refer to the engine manufacturer's website for additional information. **Hour limitations apply and vary by model. See the LIMITED WARRANTY FOR NEW JOHN DEERE TURF AND UTILITY EQUIPMENT at JohnDeere.com and JohnDeere.ca/4Warranty for details. John Deere's green and yellow color scheme, the leaping deer symbol and JOHN DEERE are trademarks of Deere & Company.

A0003KKB1A58869-AMISX100617G5N-BW-00412764

All Central Time, for Kansas Mountain Time Stations subtract an hour

Tuesday Evening										June 17, 2014	
	7:00	7:30	8:00	8:30	9:00	9:30	10:00	10:30	11:00	11:30	
ABC	2014 NBA Finals		Local		Local	Local			Jimmy Kimmel Live		
CBS	NCIS		NCIS: Los Angeles		Person of Interest		Local	Late Show Letterman	Ferguson		
NBC	America's Got Talent				The Night Shift		Local	Tonight Show	Meyers		
FOX	Fam. Guy	Brooklyn	Brooklyn	Mindy	Local						
Cable Channels											
A & E	Storage	Storage	Shipping	Shipping	Big Smo	Shipping	Storage	Storage Wars		Local	
AMC	Ghostbust	Ghostbusters II					Freakshow	Freakshow	Town	Local	
ANIM	Wild Russia		Wild Russia		Wild Russia		Wild Russia		Russia	Local	
BET	Being Mary Jane		Being Mary Jane		Being Mary Jane		Wendy Williams Show		Latifah	Local	
BRAVO	Housewives/Atl.		The People's Couch		Housewives/NYC		Happens		Housewives/NYC	Atlanta	
CMT	Local	Local	Reba	Reba	Legally Blonde 2					Flicka	
CNN	Clinton Meeting				Anderson Cooper 360		Spotlight	CNN Special Report		Local	
COMEDY	Tosh.0	Tosh.0	Tosh.0	Tosh.0	Daily	Colbert	At Midnig	Tosh.0		Local	
DISC	Local	Local	Deadliest Catch		Deadliest Catch		Deadliest Catch		Siberian Cut		
DISN	Local	Local	Good Luck Jessie		Dog	Austin	Camp Rock 2				
E!	Kardashian		True Hollywood Story		True Hollywood Story		Chelsea	E! News		Escape	
ESPN	College Baseball				SportsCenter				SportCtr	Local	
ESPN2	SportCtr	World Cup	Tonight		Olbermann		ESPN FC			Local	
FAM	Chasing Life		Pretty Little Liars		The 700 Club		Chasing Life		Liars	Local	
FOOD	Local	Local	Chopped		Chopped		Chopped		Chopped		
FX	Thor				Fargo		Fargo				
HGTV	Flip or F	Flip or F	Flip or F	Flip or F	Hunters	Hunt Intl	Flip or F	Flip or F	Flip or F	Flip or F	
AmericanProfile // CELEBRATING THE AMERICAN SPIRIT //											
HIST	Top Gear		The Hunt		Top Gear		Pawn	Pawn Stars		Local	
LIFE	Little Women: LA		Little Women: LA		Little Women: LA		Little Women: LA			Local	
MTV	Awkward.		Awkward.		Awkward.		16 and Pregnant			Local	
NICK	Local	Local	Sam & Cat	Webheads	Nick News	Full H'se	Full H'se	Full H'se	Full H'se	Full H'se	
SCI	Wil Whe.		Wil Whe.		Heroes of Cosplay		Heroes of Cosplay			Local	
SPIKE	Law Abiding Citizen				Walking Tall				Drift	Local	
TBS	Big Bang	Big Bang	Big Bang	Big Bang	Conan		Holmes	Conan		Local	
TCM	Random Harvest		The Merry Widow				Witness-Pros.			Local	
TLC	Local	Local	The Little Couple		Couple	Couple	The Little Couple		The Little Couple		
TNT	Rizzoli & Isles		Perception		Rizzoli & Isles		Perception			Local	
TOON	Cleveland	Cleveland	Amer. Dad	Amer. Dad	Family Guy		Chicken	Aqua Teen	Venture	Local	
TRAV	Chowdown.		Chowdown.		Bizarre Foods		Chowdown.		Chowdown.	Local	
TV LAND	Griffith	King	King	King	Cleveland	Jennifer	The King of Queens		Raymond	Local	
USA	Royal Pains		Playing	Playing	Mod Fam	Mod Fam	Royal Pains			Local	
VH1	I Love the 2000s		I Love the 2000s		Hit the Floor		Love, Hip Hop		Love	Local	
WGN	MLB Baseball				How I Met		How I Met	How I Met	Parks	Parks	
Premium Channels											
HBO	Local	Local	Man of Steel				Game of Thrones			VICE	
MAX	Local	Local	Two	Top Gun					My Super Ex-Girlfriend		
SHOW	Local	Local	Twilight	Nurse	Californ.	The Last Exorcism Part II			Penny Dreadful		

©2009 Hometown Content, listings by Zap2it

Wednesday Evening							June 18, 2014			
	7:00	7:30	8:00	8:30	9:00	9:30	10:00	10:30	11:00	11:30
ABC	Middle	Goldbergs	Mod Fam	Goldbergs	Motive		Local	Jimmy Kimmel Live		Nightline
CBS	Hawaii Five-0		Criminal Minds		CSI: Crime Scene		Local	Late Show Letterman		Ferguson
NBC	Stanley Cup		Local	Local	Local			Tonight Show		Meyers
FOX	So You Think				Local					
Cable Channels										
A & E	Duck D.	Duck D.	Duck D.	Big Smo	Big Smo	Duck D.	Duck D.	Duck Dynasty		Local
AMC	Shooter				Lara Croft-Life					Local
ANIM	Treehouse Masters		Treehouse		Treehouse		Treehouse Masters	Treehouse		Local
BET	Set It Off		The Message		The Message		Wendy Williams Show	Latifah		Local
BRAVO	Housewives/OC		Million Dollar		Untying	Untying	Happens	Million Dollar		NYC
CMT	Local	Local	Reba	Reba	Crazy Heart					
CNN	Anthony Bourd.		CNN Tonight		Anderson Cooper 360		Anthony Bourd.		CNN Tonig	Local
COMEDY	South Pk	South Pk	South Pk	South Pk	Daily	Colbert	At Midnig	South Park		Local
DISC	Local	Local	Dual Survival		Dual Survival		Dual Survival		Naked and Afraid	
DISN	Local	Local	Good Luck Jessie		Dog	Jessie	I Didn't	Austin	Jessie	Good Luck
E!	Kardashian		Kardashian		Local	The Soup	Chelsea	E! News		Chelsea
ESPN	College Baseball				SportsCenter		SportsCenter		SportCtr	Local
ESPN2	MLB Baseball		Baseball Tonight		Olbermann		World Cup Tonight			Local
FAM	Cyberbully				The 700 Club		Daddy	Daddy	Melissa	Local
FOOD	Local	Local	Restaurant: Im.		Restaurant Steakout		Restaurant Steakout		Restaurant: Im.	
FX	Jack and Jill				Jack and Jill				The Wedding Singer	
HGTV	Property Brothers		Property Brothers		Hunters	Hunt Intl	Brother vs. Brother		Property Brothers	
HIST	American Pickers		American Pickers		American Pickers		American Pickers			Local
LIFE	Madea's Family		Day Late-Dollar				Madea's Family Reunion			Local
MTV	Catfish: The TV Show		Catfish: The TV Show		Catfish	Catfish: The TV Show	Catfish: The TV Show	Catfish: The TV Show		Local
NICK	Local	Local	Sam & Cat	Webheads	Full H'se	Full H'se	Full H'se	Full H'se	Full H'se	Full H'se
SCI	Indiana Jones				Contact					Local
SPIKE	Law Abiding Citizen			The Departed						Local
TBS	Big Bang	Big Bang	Big Bang	Big Bang	Conan		Holmes	Conan		Local
TCM	Sous les Toits		A Nous la Liberte			Le Million			Grand	Local
TLC	Local	Local	19 Kids	19 Kids	19 Kids and Counting		19 Kids and Counting		A Duggar Leaves Home	
TNT	Castle		Castle		Hawaii Five-0		Cold Justice			Local
TOON	Cleveland	Cleveland	Amer. Dad	Amer. Dad	Fam. Guy	Fam. Guy	Chicken	Aqua Teen	Venture	Local
TRAV	Trip Flip	Trip Flip	Baggage B	Baggage B	Food Paradise		Trip Flip	Trip Flip	Baggage B	Local
TV LAND	Raymond	Raymond	Cleveland	Jennifer	Cleveland	Jennifer	King	King	Cleveland	Local
USA	Suits		Graceland		Mod Fam	Mod Fam	Suits			Local
VH1	I Love the 2000s		I Love the 2000s		Space Jam				Love	Local
WGN	Hulk				Salem		Salem		Rules	Rules
Premium Channels										
HBO	Local	Local	Admission			Leftovers	The Conjuring			
MAX	Local	Local	True Crime		Runner Runner		Payback			
SHOW	Local	Local	Election	David Beckham Into the Unknown	Penny Dreadful		Californ.	Nurse		

©2009 Hometown Content, listings by Zap2it

Thursday Evening							June 19, 2014				
	7:00	7:30	8:00	8:30	9:00	9:30	10:00	10:30	11:00	11:30	
ABC	Black Box		Rookie Blue				Local	Jimmy Kimmel Live		Nightline	
CBS	Big Bang	Mom	Two Men	Millers	Elementary		Local	Late Show Letterman		Ferguson	
NBC	Hollywood Game Night		Undate	Undate	Last Comic Standing		Local	Tonight Show		Meyers	
FOX	Hell's Kitchen		Gang Related		Local						
Cable Channels											
A & E	The First 48		Campus Killer		Beyond Scared Straig		The First 48			Local	
AMC	Teen Wolf		Back to School		River Renegade		Halt and Catch Fire	AmerWere		Local	
ANIM	North Woods Law		River Renegade		North Woods Law		River Renegade	North Wds		Local	
BET	Jumping the Broom						Wendy Williams Show	Latifah		Local	
BRAVO	Atlanta	Housewives/Atl.		Housewives/Atl.		TBA	Happens	Housewives/OC		Million	
CMT	Local	Local	Wild Hogs					Party Down	South		
CNN	The Sixties		The Sixties		Anderson Cooper 360		The Sixties	The Sixti		Local	
COMEDY	Tosh.0	The Comedy	Central Roast		Daily	Colbert	At Midnig	Tosh.0		Local	
DISC	Local	Local	Mermaids-Body				Mountain Monsters		Mountain Monsters		
DISN	Local	Local	Good Luck Jessie		Bolt			Good Luck	Jessie		
E!	True Hollywood Story		Kardashian		Kardashian		Chelsea	E! News		Dinner	
ESPN	College Baseball				SportsCenter		SportsCenter		SportCtr	Local	
ESPN2	SportCtr	World Cup	Tonight		Olbermann		ESPN FC		Prince	Local	
FAM	The Smurfs		The Fosters		The 700 Club		Prince	Prince	Prince	Local	
FOOD	Local	Local	Food Network Star		Chopped		Chopped Canada	Chopped		Local	
FX	21 Jump Street					21 Jump Street					
HGTV	Fixer Upper		Fixer Upper		Hunters	Hunt Intl	Fixer Upper	Fixer Upper		Local	
HIST	Pawn	Pawn	American	American	American	American	Pawn	Pawn Stars		Local	
LIFE	Family That Preys			Little Women: LA		Betty	Family That Preys			Local	
MTV	Bad Grandpa .5		The Challenge: Free		Bad Grandpa .5				Jackass		
NICK	Local	Local	Sam & Cat	Webheads	Instant	See Dad	Full H'se	Full H'se	Full H'se	Full H'se	
SCI	Dominion			Dominion						Local	
SPICE	MPACT Wrestling				Countdown	Cops	Cops	Cops	Jail	Local	
TBS	Big Bang	Big Bang	Big Bang	Big Bang	Conan		Holmes	Conan		Local	
TCM	Pillow Talk		Lover Come Back						Send Me No Flowers	Local	
TLG	Local	Local	Honey	Here Comes Honey Boo Boo			Here Comes Honey		Sextuplets	Turn 10	
TNT	Castle		Castle		Murder in the First		Perception			Local	
TOON	Cleveland	Cleveland	Amer. Dad	Amer. Dad	Fam. Guy	Fam. Guy	Loiter	The Eric	Delocated	Local	
TRAV	Bizarre Foods		Bizarre Foods		Bizarre Foods		Bizarre Foods		Bizarre	Local	
TV LAND	Boss	Boss	King	King	King	King	Everybody-Raymond		Raymond	Local	
USA	Mod Fam	Mod Fam	Mod Fam	Mod Fam	Mod Fam	Mod Fam	Law & Order: SVU		Laws SVU	Local	
VH1	I Love the 2000s		I Love the 2000s		American Pie				Arks	Local	
WGN	How I Met	How I Met	How I Met	How I Met	How I Met	How I Met	How I Met	How I Met	Parks	Parks	
Premium Channels											
HBO	Local	Local	Enough Said		Oblivion				Game of Thrones		
MAX	Local	Local	Enemy of the State					Kick-Ass 2			
SHOW	Local	Local	Alex Cross			Scary Movie V			Penny Dreadful		

GARAGE SALE

506 Caldwell (5th Street garage). MOVING SALE Saturday from 8 a.m. to 3 p.m.. Furniture, exercise bike, many assorted tools, 20 foot extension ladder, holiday items, and lots of miscellaneous. -6-17-6-20-

CARD OF THANKS

I want to say thank you to all my friends, the community, family, residents and staff at Wheatridge Acres for the bake sale and donations. I appreciate all of you! Thank you! -Rhonda Lovins. -6-17-6-20-

The family of Russell Briney would like to thank friends and family for memorials, kind words, prayers, cards, food and flowers. -6-13-6-17-

WANTED

Junk batteries, non-ferrous metals and iron. Darrel Bowen. Phone 785-899-2578. -tfn-

HELP WANTED

Immediate opening for Home Health Care for Goodland elderly couple. Call (609) 937-0349. -6-17-6-20-

CMA/CNA positions open. Full and part-time positions. Night shift. CMA/CNA day and evening shift. Dental and vision available. Apply in person at Wheat Ridge Acres, 707 Wheat Ridge Circle in Goodland. Phone: (785) 899-0100. -6-13-6-17-

AgSun, LLC is now hiring a Mill Operator/Truck Driver. Operator must have a CDL to drive truck part-time to deliver feed to area feedlots and dairies. Some grain handling involved, especially at fall harvest. Insurance and participating retirement plan is offered. Need to hire ASAP. Please inquire at AgSun, LLC in Brewster, KS by calling Don at 785-694-2752. -6-10-7-10-

RAWLINS COUNTY HEALTH CENTER IS CURRENTLY ACCEPTING APPLICATIONS FOR A BI MONTHLY CIRCULATION NURSE. JOB DUTIES WILL INCLUDE: The Circulation Nurse plans and administers the activities of the surgical areas. Ensures nursing services are delivered to each patient in accordance with quality standards. Acts as liaison between surgery physician and patient care team. Develops short and long-range departmental plans. Manages department resources and day to day employee relations and staff development. Minimum qualifications include: RN license. Previous experience

preferred. Must have a friendly personality, ability to work cooperatively with all hospital departments, patients, and visitors, a high degree of technical skill, be detail oriented, be a quick learner, and enjoy working in a fast paced environment which requires flexibility and adaptability to changing patient care needs. Offering an excellent benefit package and competitive salary. Applications are available online at www.rchc.us under Careers and may be returned to: Tara Bowles, Employee Relations Director, tbowles@rchc.us. Applications accepted until position filled. EOE. -cfp 6-10-6-20-

RAWLINS COUNTY HEALTH CENTER IS CURRENTLY ACCEPTING APPLICATIONS FOR A BI MONTHLY PRE-OP/ POST-OP NURSE JOB DUTIES WILL INCLUDE (list is not exhaustive): The Pre-Op/Post-Op Nurse gives medications, assesses and makes sure patients are adequately prepared for surgery, educates patients about procedure. Minimum qualifications include: RN license. Previous experience preferred. Must have a friendly personality, ability to work cooperatively and communicate with all hospital departments, patients, and visitors, a high degree of technical skill, exemplary assessment skills, be detail oriented, be a quick learner, and enjoy working in a fast paced environment which requires flexibility and adaptability to changing patient care needs. Must remain calm under pressure and have excellent critical thinking skills. Offering an excellent benefit package and competitive salary. Applications are available online at www.rchc.us under Careers and may be returned to: Tara Bowles, Employee Relations Director, tbowles@rchc.us. Applications accepted until position filled. EOE. -cfp 6-10-6-20-

RAWLINS COUNTY HEALTH CENTER IS CURRENTLY ACCEPTING APPLICATIONS FOR A BI MONTHLY SCRUB TECH. JOB DUTIES WILL INCLUDE (list is not exhaustive): The Scrub Tech will be responsible for assisting with operative procedures and patient care. Minimum qualifications include: C.N.A.. LPN and Certified Scrub Tech (CST) preferred. Must have a friendly personality, ability to work cooperatively with all hospital departments, patients, and visitors, a high degree of technical skill, be detail oriented, be a quick learner, and enjoy working in a fast paced

environment which requires flexibility and adaptability to changing patient care needs. Offering an excellent benefit package and competitive salary. Applications are available online at www.rchc.us under Careers and may be returned to: Tara Bowles, Employee Relations Director, tbowles@rchc.us. Applications accepted until position filled. EOE. -cfp 6-10-6-20-

Jill's Helping Hands in hiring in the Goodland area. Duties would include light housekeeping, laundry, errands, and meal preparation for future meals. Looking to hire a mature, dependable, and caring person. Great Part time job and flexible in setting a regular schedule. 10 to 15 hours per week approximately to start. Please call Jill at 785-622-4254 or e-mail at jillshelpinghands@ruraltel.net. -6-10-6-20-

Part-time CNA for Goodland Home Health. Call (785) 890-7658 for an application. -6-3-7-3-

The team at Kansasland Tire of Norton has an immediate opening for a service truck operator/general service person. Must have a valid driver's license. Competitive wages, 401k, insurance and uniforms. Experience preferred, but not necessary, we will train. Please stop by 11101 Rd. E1, Norton, and pick up an application or call (785) 877-5181. EOE. -2-14-tfn NORTON-

FOR SALE

2000 Starcraft tent trailer 3 way refrigerator furnace sleeps 6 plus. Call (719) 346-8182. -6-16-6-27

Sharon Springs, KS home for sale. 4 bedroom, 2.5 baths, 2 car garage. Great location, many updates. Call Jamie at (785) 821-3813. -6-17-7-17-

23 cu. ft. Maytag refrigerator with icemaker. Newer, clean, in good shape and works great. \$350. Call (785) 821-1280. -6-13-6-17-

Charming remodeled home for sale. Located in St. Francis. New appliances, A/C and heating, etc.. Visit: www.railegelbvieh.com/webster for more information. -5-20-6-20-

McNab puppies for sale, out of working parents. Long Island,

KS. Leave message at (308) 645-9085. -NT 5-13-tfn-

REGISTERED ANGUS. 2 year old bulls. Adam Jones, Crooked Creek Angus. (785) 332-6206. www.crookedcreekangus.com. -sfh 4-25-6-27-

1948 Philco Radio/Phonograph cabinet, good condition. Both radio and phonowork. \$100.00. Call (719) 350-0705. -12-31-tfn-

2 Harley Davidson die cast models. 1-1:10 scale Hot Wheels HD Softail. 1-1:10 scale Maisto FLSTS Heritage Springer. Still in original boxes! Call Gary at (719) 350-0705. -9-24-tfn

AWP tool belt/pouches with kidney belt and suspenders. Paid \$100 plus, asking \$50. Call Gary at (719) 350-0705. -9-24-tfn

FOR RENT

Very nice 3 bedroom duplex, 2 baths. Call (785) 821-0106. Goodland. -5-4-7-4-

Houses and apartments in Goodland. All sizes. Call for details. (785) 890-6538. -1-10-tfn-

Houses and apartments. Cole Real Estate. 785-899-2683. -tfn-

SERVICES

MAX'S REPAIR in Goodland. Tell me what you want. Call (785) 821-5577. -6-17-6-27-

Almanza's Interior Services, Inc.. Drywall specialist.

CNA, CMA, LPN & RN'S NEEDED



Good Samaritan Society in Goodland, KS, is now accepting applications for all positions. There include: CNA, CMA, LPN and RN. Applicant must be honest and reliable. Structured attendance policy is enforced. For more information please contact Shaunda Mann DNS at (785) 890-7517, or apply online at: good-sam.com. EOE.

Drywall hanging, drywall finishing, texture and paint. Free estimates. References available. Spanish call (785) 332-5353. English call (785) 890-6223. -3-7-tfn-

Burlington-Goodland area. Residential overhead door service and repair, 20 years experience. Call Gary at (719) 350-0705. -7-12-tfn

Sponsored by

The Goodland Star-News

1205 Main
Goodland, Kan. 67735
899-2338

4	2	5	7	9	1	6	8	3
1	3	9	6	5	8	7	4	2
7	6	8	4	2	3	1	5	9
8	9	3	5	7	4	2	6	1
5	1	7	2	8	6	3	9	4
2	4	6	3	1	9	8	7	5
6	5	1	8	4	2	9	3	7
9	8	4	1	3	7	5	2	6
3	7	2	9	6	5	4	1	8

HELP WANTED

The Thomas County Sheriff's Office is currently seeking applications for a **Detention Deputy**. Applicants must be at least 21 years of age and meet required standards in the following categories: background investigation; written, oral and psychological testing, keyboard skills; health screening.

The Sheriff's Office is an equal opportunity employer and provides employees single health Insurance, sick leave, vacation, KPERs, retirement benefits, overtime provisions, and uniforms (cleaning supplied). Salary depends on qualification and experience.

Persons wishing to apply may pick up an application at the Thomas County Sheriff's Office, 225 N. Court, Colby, Kansas 67701. (Phone: 785-460-4570). Position to remain open until filled. Interviews will begin immediately.

The Northwest Kansas Educational Service Center is accepting applications for the 2014-2015 school year.

- Head Start Teachers (Sherman/Gove Counties)
- Gifted Facilitator
- Speech Pathologists
- Early Childhood Special Education Teachers
- Interrelated Teachers (Oberlin/Grinnell)
- Head Start Aides (Rawlins/Thomas County)
- Para-educators (Golden Plains/Quinter/Sherman County)

Applications are available at www.nkesc.org or 785-672-3125. Applications will be accepted until the positions are filled. *NKESC is an EOE*



Customer Service Representative

Full Time (temporary), Colby

In keeping with our mission for providing quality products and services, this position supports the company's mission statement by responding promptly to customer inquiries and resolving problems in a thorough and effective manner while maintaining a focus on excellent customer service. Tasks may include serving as primary contact for customers, processing orders, customer applications, and disconnects; as well as dispatching technicians, maintaining records, selling and promoting all S&T services, answering phones, etc. Those interested must have a high school diploma, 2-3 years computer experience, one year customer service and valid KS driver's license with good driving record.

Applications available at all S&T locations: Brewster, Colby, Dighton, Goodland, Colby. See our website for more details. Drug testing required. This institution is an equal opportunity provider and employer. 1-800-432-8294 careers@sttel.com www.sttel.com

Seasonal Help Wanted

The Scoular Company is looking for an individual to help run our truck scale at our Goodland, Kansas, grain handling facility during wheat harvest. Interested applicants may pick up an application at the Goodland office at 1632 Main Street.

Contact:

Jeff Bhend, Facility Manager / (800) 356-1130 / jbhend@scoular.com

The Scoular Company is an equal opportunity employer.



www.scoular.com

Opening for TRUCK DRIVER

Required: high school diploma or equivalent, CDL with HAZMAT & Tanker endorsement, ability to operate a forklift. **Duties:** Deliveries, load and unload product, utilize a forklift, general warehouse duties.

Apply at Helena Chemical
6409 Road 25, Goodland, or call 785-899-2391

Excellent working environment, outstanding compensation & benefits. Pre-employment drug screening required. EOE M/F/V/H



Administrative Assistant

The City of Goodland is seeking an Administrative Assistant for the City Manager's Office. This position performs all clerical duties for the City Manager, the Economic Development Coordinator and other department heads. Desired qualifications are technical degrees or some college credits with three years of similar or related experience. Review of applications will begin on July 7, 2014 and the position will remain open until filled. Application is available online at www.cityofgoodland.org and should be submitted to Gerry Bieker, City Manager, P.O. Box 59, Goodland, KS 67735. Electronic submittals can be made to gerry.bieker@cityofgoodland.org. Starting salary is \$13.00/hour with an excellent benefit package. EOE



Help Wanted

Part-time Paper Inserter

25 to 30 hours per week.
PLEASE APPLY IN PERSON!

The
Goodland Star-News

1205 Main Avenue, Goodland, KS 67735

JOIN A WINNING TEAM IN GOODLAND

Store Manager

Casey's is looking for a friendly, energetic individual to fill a managerial position.

- Days, Nights, Weekends, various hours
- 1/2 Price meals
- Free fountain drinks
- Friendly, home-town work environment
- Experience preferred
- Paid Training



Apply to:

Casey's General Store
213 Washington
Ellis, KS 67637
www.caseys.com
EOE



LIFE WIRELESS
announces

Immediate Distribution Partnership Opportunities

- Industry Leading Compensation
- Comprehensive Market & Representative Bonus Plans
- Broad Range of Geographic Territories
- Streamlined Onboarding & Training
- Real Time Order Approvals
- Stateside Technical & Field Support

Don't miss this exciting opportunity

CALL 1-866-874-9293

Email: partnerships@lifewireless.com

Your hometown. Their future.



Imagine the possibilities for your community if everyone designated **just 5%** of their estates to hometown needs.

With the help of community foundations, we can create permanent sources of funding for local charities, schools, churches, parks, and so much more!



A little planning. A big impact.

Learn more at keepfiveinkansas.com

12 and Under team is undefeated, begins tournament play

The Goodland Rough Riders 12 and Under baseball team ended their regular season on June 10 with an undefeated record.

The Rough Riders are scheduled to compete in tournament play today at 8:30 a.m. in Burlington. The winner of that game will go on to play in the championship game at 8:30 a.m. Saturday.

In their final regular season game, the Rough Riders beat the Burlington-Richardson Construction team 13-1 on the road.

After a leadoff single from Colton McCarty, Goodland got five runs on five more base hits. The Rough Riders added seven more runs in the top of the third on a double by McCarty and singles by Mason Neal, Andrew Schields, Jake DeLaRosa and Trevor Daise and two singles from Brock Mull and Bryson Ihrig.

The Burlington team scored their only run in the bottom of the third, while Goodland added one more in the fourth on a home run by McCarty to win 13-1.

In their first game on May 14, the Rough Riders beat Stratton 13-4.

The team gave up one run on one hit in the first, but in the bottom of the inning, Schields scored, tying the game 1-1.

Leyton Cure broke the tie in the second inning, scoring on a fielder's choice. The Rough Riders extended their lead to 4-1 in the third with two runs on singles from DeLaRosa and Trevor Daise and a double from McCarty.

Stratton put in two runs in the top of the fourth, but the Rough Riders scored another run in the bottom of the fourth and four runs in the bottom half of the fifth on six hits including a double from Henry Cole.

The Rough Riders held Stratton to just one more run in the game while scoring four more to win 13-4.

Against the Limon-Black, the Rough Riders got out to an early 1-0 lead in the first, but lost the lead when Limon scored two runs in the second. They tied the game 2-2 in the third with a run from Mason Neal on a single from Jack Daise.

The Rough Riders retook the lead 3-2 in the top of the fourth on a solo home run from McCarty. Limon pulled ahead again in the bottom of the fourth, taking a 4-3 lead.

The Rough Riders opened up the taps in the fifth inning, scoring five runs on three hits, including home runs from McCarty and DeLaRosa. Limon was unable to score again, but the Rough Riders added six runs in the sixth inning to win 14-4.

Goodland defeated the Burlington C&C team. 12-3. Cole scored

matters of record

The following real estate transactions have been reported by the Sherman County Register of Deeds.

Pamela M. Cullen and Kurt V. Childress, to Pamela M. Cullen, the N/2 of Lot 11, all of Lot 12, Block 32, Academy Addition to City of Goodland, AKA 1101 Arcade.

Zephyr Land, LLC conveys and quit claims to Baillon Oilgas Corporation, an undivided 1/2 interest in any minerals, oil and gas located in NE/4 of Sec. 4, T8S, R38W.

David Rietcheck and Lori J. Rietcheck convey and warrant to Aron B. Hernandez, the S12.5' of Lot 5, all of Lot 6, and N25' of Lot 7, Block 2, Kohler First Addition to City of Goodland.

Christopher D. Irvin conveys and warrants to Jeffrey H. Deeds and Jill M. Deeds, all of Lots 1, 2 and 3, and N10' of Lot 4, Block 1, CK&N Addition to Town of Goodland.

Laura E. Irvin conveys and warrants to Jeffrey H. Deeds and Jill M. Deeds, all of Lots 1, 2 and 3, and N10' of Lot 4, Block 1, CK&N Addition to Town of Goodland.

Thomas M. Irvin conveys and warrants to Jeffrey H. Deeds and Jill M. Deeds, all of Lots 1, 2 and 3, and N10' of Lot 4, Block 1, CK&N Addition to Town of Goodland.

Ryan J. Irvin conveys and warrants to Jeffrey H. Deeds and Jill M. Deeds, Lots 1, 2 and 3, and N10' of Lot 4, Block 1, CK&N Addition to Town of Goodland.

Jennifer R. Smith conveys and warrants to Jeffrey H. Deeds and Jill M. Deeds, Lots 1, 2 and 3, and N10' of Lot 4, Block 1, CK&N Addition to Town of Goodland.

Michael P. Smith and Jennifer E. Smith, convey and warrant to Jeffrey H. Deeds and Jill M. Deeds,

in the bottom of the first inning. Burlington tied the game 1-1 with a run in the top of the second, but the Rough Riders exploded with four runs in the bottom half of the inning. Cole and Mull each hit doubles.

Burlington added a run in the top of the third, but the Rough Riders extended their lead to 8-2 in the bottom of the inning on hits from Jack Daise and Ihrig.

Goodland held Burlington scoreless in the fourth while adding three runs of their own on singles from Ryan Berls, Schields and Mull; a double from Ihrig, a triple from McCarty and a home run from DeLaRosa.

Each team put up one more run in the game, which ended in the sixth inning with a 12-3 win for Goodland.

The team got a big win over Hugo, 18-2 in six innings. Two runs scored in the bottom of the first in a single from Neal and a double from Truman Hooker. Neither team scored again until the third, when Hugo put one run across on one hit.

In the bottom half of the inning, Goodland put two runs on the board on doubles by Neal and DeLaRosa and a single by Cole.

Hugo would score one more run in the top of the fourth, but the rest of the game was all Goodland. The Rough Riders put in four runs in the fourth and five runs each in the fifth and sixth innings to win 18-2.

The Rough Riders' biggest win of the season came against Flagler on June 2.

Goodland batted around in the first inning, nearly going through the order twice and bringing home 12 runs. Among the team's four hits was a home run for Neal.

The Rough Riders gave up one run in the bottom half of the inning, but came back with another eight runs in the second and three more in the third. In the top of the fourth, Flagler put together a three-run rally, but it was not enough to overcome Goodland, who won 23-4.

On June 7, Goodland traveled to Limon to face the Limon Grey team. The Rough Riders got things going with two runs in the first off the bats of Cole, Mull and DeLaRosa.

The Limon team would score their only run in the bottom of the first on a walk and a single. After that, the Rough Riders scored one run in the second, two in the third and three in the sixth to win 8-1.

Also on the team are Manten Cure and Trent Coon. Coaches are Harvey DeLaRosa, Kale Schields, Dallas DeLaRosa and Mike McCarty.

Get set and go



Goodland Swim Club members Lindsey Cure and Rilynn Frazier jumped off the starting platforms at the Goodland swim meet on Saturday at Steever Water Park. Cure and Frazier compete in the 9-10 Girls division. Photo by Kevin Bottrell/The Goodland Star-News



Kanorado home for sale!

Charming home with so much to offer! 2 BR, 1.75 baths on main, with 2 BR in bsmt. Extensively renovated in past few years. Stainless steel appl., FA/AC; 2-car det. garage. Check it out...208 Beech St., Kanorado, KS. \$99,000.

**HENDRICKS REALTY, INC.**
1401 Rose Avenue
Burlington, Colorado 80807
Phone: 719-346-7187
www.hendricksrealtyinc.com


Taste the Greatness!



Try our new Guacamole Burger!

With a 1/4 lb. 100% beef patty (or grilled or crispy chicken) topped with pico de gallo, ranch sauce, white cheddar cheese, crispy leaf lettuce and a lime wedge, all on a fresh artisan bun, it's hard to go wrong with McDonald's newest burger!

Quarter Pounder: Sandwich \$4.69 • Combo \$6.69
Chicken: Sandwich \$4.89 • Combo \$6.89



GOODLAND LOCATION ONLY • OPEN DAILY 6 A.M. TO 11 P.M.

Lots 1, 2 and 3, and N10' of Lot 4, Block 1, CK&N Addition to Town of Goodland.

The Goodland Star-News

SUBSCRIBER

Tony Martin

You receive two free passes to see:

X-MEN: DAYS OF FUTURE PAST 3D (PG-13)

Clip and bring to the show. Non Transferable



1203 Main Avenue • (785) 899-6103

FUN BY THE NUMBERS

		3			5			8
		9		4	2		3	
2		5				6		4
	3					1	5	
8								3
6	5	2			4	7	8	9
9			3	2			7	5
5	2	7		8				1
			7		6	4		

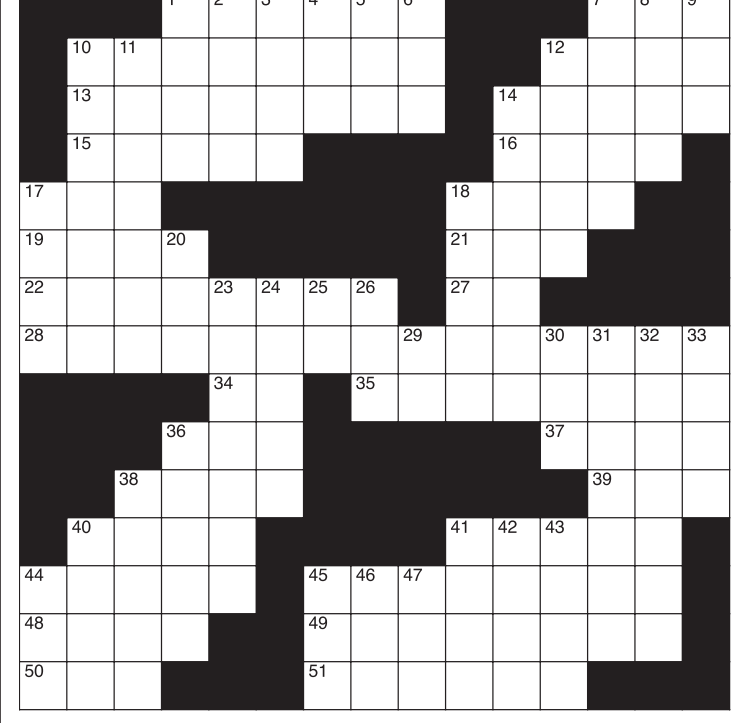
Level: Beginner

Like puzzles? Then you'll love sudoku. This mind-bending puzzle will have you hooked from the moment you square off, so sharpen your pencil and put your sudoku savvy to the test!

Here's How It Works:

Sudoku puzzles are formatted as a 9x9 grid, broken down into nine 3x3 boxes. To solve a sudoku, the numbers 1 through 9 must fill each row, column and box. Each number can appear only once in each row, column and box. You can figure out the order in which the numbers will appear by using the numeric clues already provided in the boxes. The more numbers you name, the easier it gets to solve the puzzle!

Crossword Puzzle




- ### CLUES ACROSS

 - Missouri River tributary
 - Orange-brown African antelope
 - Access steps
 - Scottish word for gutter
 - Oiled whetstone
 - Tranquility
 - Indian rat snake genus
 - Competent
 - Premier ___ Wine
 - Carbamide
 - Belongs to "2001" computer
 - Campaign commission
 - Lives without oxygen
 - Blue Hen school
 - Herb-grinding tools
 - "Fast Five" star's initials
 - Does not pay debts
 - Word element meaning life
 - Town of 1993 Texas siege
 - Prohibitions
 - Cardboard box (abbr.)
 - Hillside (Scot.)
 - Yemen capital
 - Plural of 40 across
 - Cloths showing needle-work skills
 - Settled a debt
 - Cause annoyance in (abbr.)
 - Million gallons per day
 - Parson
- ### CLUES DOWN

 - Pale (archaic)
 - ___ Marie Presley
 - Bachelor of ___
 - Deuce
 - Light brown color
 - Vision organ
 - Australian bear
 - A single occurrence
 - Stinging insect
 - High voice
 - About title
 - Medieval fiddle
 - Marched in a procession
 - People of Southeast Asia
 - Hoopoe bird genus
 - Unit of a tennis match
 - Steep-sided valleys
 - China's largest ghost town
 - Undergraduate degree
 - Finish
 - 1st state
 - South by west
 - Tea wagon
 - Lactaid enzyme
 - British prep school
 - Blatted
 - Woven pigtail
 - Boast
 - Saliva
 - Countertenor
 - Close by
 - Beats per minute
 - Tiny drink
 - Macaws
 - Married woman

The crossword puzzle brought to you by:

**CLARK Crossing Co.**
Books • Coffee • Art
223 E. 10th, Goodland, KS 67735 • Ph: (785) 262-9517
Hours: Daily 8 a.m. to 4 p.m. • Fri. & Sat. 7-11 p.m.