

The Goodland Star-News

1205 Main Avenue, Goodland, KS 67735 • Phone (785) 899-2338

MIDWEEK
Tuesday, March 25,
2014

\$1

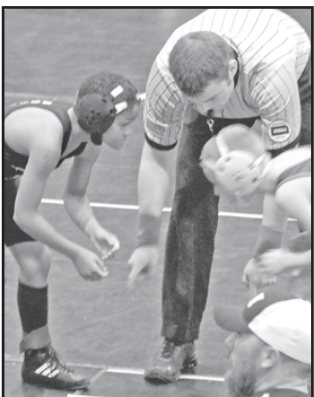
Volume 82, Number 24

16 Pages

Goodland, Kansas 67735

inside today

More local news, views from your Goodland Star-News



Wrestling tournament

The Kansas Kids Wrestling District 4 tournament was held at the Max Jones Fieldhouse on Saturday, bringing in hundreds of athletes, coaches and fans.

See Page 12

weather report

31°
10 a.m.
Monday



Today

• Sunset, 7:04 p.m.

Wednesday

• Sunrise, 6:40 a.m.

• Sunset, 7:05 p.m.

Midday Conditions

- Soil temperature 37 degrees
- Humidity 85 percent
- Sky cloudy
- Winds north 18-26 mph
- Barometer 30.24 inches and rising

- Record High today 85° (1907)
- Record Low today -6° (1965)

Last 24 Hours*

High Sunday	49°
Low Sunday	16°
Precipitation	none
This month	0.35
Year to date	1.29
Below normal	0.32 inches

The Topside Forecast

Today: Mostly sunny with a high near 54, winds breezy out of the northeast at 5 to 30 mph and a low around 35. Wednesday: Mostly sunny with a high near 72, winds breezy out of south at 10 to 30 mph and a low around 39.

Extended Forecast

Thursday: Partly sunny with a 30 percent chance of rain and snow, a high near 52, winds breezy and a low around 29. Friday: Mostly sunny with a high near 55 and a low around 31. Saturday: Sunny with a high near 66 and a low around 37.

(National Weather Service)
Get 24-hour weather info. at 162.400 MHz.

local markets

10 a.m.
Wheat — \$7.81 bushel
Posted county price — \$6.52
Corn — \$4.73 bushel
Posted county price — \$4.55
Milo — \$4.37 bushel
Soybeans — \$13.38 bushel
Posted county price — \$13.52
Millet — no bid
Sunflowers
Oil current crop — \$18.70 cwt.
Confection — no bid
Pinto beans — \$36
(Markets by Scoular Grain, Sun Opta, Frontier Ag and 21st Century Bean. These may not be closing figures.)



Shelter for snowy days



The information kiosk at the Van Gogh now has a shelter courtesy of the Goodland Rotary Club. The kiosk has information about various things in Goodland including restaurants, attractions and lodging.

Photo by Kevin Bottrell/The Goodland Star-News

Colorful 5K run set for Saturday

Help celebrate the end of the Sherman County Wellness Challenge at the Kolor Splash 5K on Saturday at the Max Jones Fieldhouse parking lot.

Registration will begin at 2 p.m. with the race starting at 3 p.m.

During the color run, participants will be splashed with colorful powder, and will likely look as though they have been tie dyed by the time they get to the finish line.

Registration will be available up to race day. Cost is \$10 per person or \$5 for Wellness Challenge members. Registrations forms are available at the Goodland Activities Center or www.goodlandgac.com.

County's rating goes from A to A+

International rating firm Standard and Poor's has upgraded Sherman County's long-term rating from A to A+ on the county's 2012 general obligation bonds.

The firm assessed the local economy as well as the county's budget in determining its rating. Figuring into the rating was budget flexibility — the county has had reserves greater than 30 percent of its expenditures over the past few years — pensions and debt.

The firm said the county's outlook is "stable" and that no changes were expected in the next two years unless the local economy, population or budgetary performance were to decline.

The Sherman County Commissioners announced the rating change at a public meeting earlier this month. County Commissioner Ken Klemm said the rating means that if the county needed to borrow money, it could do so at a very low rate.

Standard and Poor's defines its ratings as a tool for investors to use when decided whether or not to purchase bonds.

Aviation safety event planned for April 5 at Colby airport

Representatives of both the government and the aviation industry in Kansas will talk to area pilots about aviation safety at a special presentation next month.

The Federal Aviation Administration Safety Team will put on "Super Safety Saturday," a set of presentations from 9 a.m. to 3 p.m. on Saturday, April 5, at Colby's Shalz

Field Municipal Airport. The event is about safety, but is open to anyone with an interest in aviation. A hot lunch will be provided, free of charge.

The meeting will include discussions about aircraft ownership and maintenance, control-tower operations, automation and special-issuance licenses for pilots with mi-

nor medical problems.

Mark Ostmeyer of MC Aviation Services, manager of the airport, will give one of the presentations. The other three speakers include two industry representatives, David Dewhirst, Michael Scheiman, and James Lamb, a member of the agency's safety team. Ostmeyer said he especially would welcome

anyone from the International Flying Farmers club, which has a convention in town that weekend.

This will be the first safety day here in several years, Ostmeyer said, although he tried to have them every year in the past.

MC Aviation, Great Plains Spraying, CBK Flyers and Dillons are sponsors for the event.

New Sonic under construction



Contractors were hard at work turning the former Wendy's building into a Sonic. Kevin Sanderson told the Goodland City Commission at their March 17 meeting that work began that day, and that the building was expected to be completed in five

weeks. Sanderson and his wife Jenifer have been working on getting the restaurant up and running for some time, and it is expected to be open before this summer.

Photo by Kevin Bottrell/The Goodland Star-News

genesis and salvation army

Genesis and Salvation Army are available year round to help those in need. Call (785) 890-2299 to speak to a volunteer.

activities

Tours of the 1907 Victorian House at 202 W. 13th are from **1 to 5 p.m. Wednesday through Monday**. Closed on Tuesday.

The **High Plains Museum**, 1717 Cherry Ave., is open from **9 a.m. to 5 p.m. Monday, Wednesday through Saturday and from 1 to 5 p.m. Sunday**. Closed Tuesdays.

The **Carnegie Arts Center** is open from **10 a.m. to 5 p.m. Tuesday through Saturday, 1 to 4 p.m. on Sunday and 1 to 6 p.m. on Monday** at 120 W. 12th. The center is always in need of hosts and hostesses on Sundays. New monthly exhibits and you are invited to visit the gift shop.

The **Goodland Public Library** is open from **10 a.m. to 8 p.m. Monday through Thursday** and from **10 a.m. to 5 p.m. Friday and Saturday**. For information call (785) 899-5461 or stop by the library.

Big Brothers/Big Sisters of Sherman County is seeking mentors and children to mentor. Call 890-3665.

The **Good Sam Family Support Council** meets at **7 p.m.** the second Thursday of every month at the Goodland Elks Lodge. Meetings are open to all interested people. For information call 890-3117 or 890-5936.

Breast Cancer Support Group meets at **5:30 p.m. the second Monday** of the month. Any woman with cancer is welcome. Call Norma at 890-6629 for more information.

The **Goodland Activities Center** has the daily activities. For information call 890-7242. Memberships options for everyone including day passes for \$5. Visit goodlandgac.com or stop by 808 Main. The hours are 5:30 a.m. to 8 p.m. on Monday through Thursday, Friday 5:30 a.m. to 6 p.m., Saturday 10 a.m. to 6 p.m. and Sunday 1 to 5 p.m. **Aerobics** are at 5:30 a.m. on Monday and Wednesday. **Insanity class** meets at 5:30 a.m. on Monday, Tuesday, Wednesday, Thursday, Friday and Saturday. **Taekwondo** with Wayne Luckert call for times and dates.

Weight Watchers meets at **5:30 p.m. for weigh in** and 6 p.m. for the meeting every **Tuesday** at the Harvest Evangelical Free Church, 521 E. Hwy. 24. For information call (785) 890-6423.

Goodland Alcoholics Anonymous, 1013 Center. If you drink alcohol, that's your business. If you want to stop, we can help. Call 821-3826 or 728-7491.

Goodland Al-Anon Family Group meets at **6 p.m. on Fridays** at First Christian Church, 711 Arcade. For information call Alice or Marilyn at 890-5914 or 821-2862.

The "Freedom Today" group of **Narcotics Anonymous** meets at **8 p.m. Tuesdays, 8 p.m. Fridays and**

the calendar

calendar

The Sherman County Sheriff's office will have a **program for parents** on parenting a pre-teen and teen at **7 p.m. on Wednesday, April 9**, at the Elks Lodge, 1523 Arcade.

Prairie Land Food distribution is 1 to 2 p.m. Saturday, at Cat's TnT, 1018 Main, or at the Bernadine Johnson residence, located at 704 Walnut. For information call 899-2338, 821-1275, 890-2287, 821-1827, 890-3793 or 899-4278 or order online at www.prairielandfood.com.

A discussion of "Dancing at Rascal Fair" by Ivan Doig will be at **6:30 p.m. on Thursday, April 24**, at the Goodland Public Library, 812 Broadway. For information call (785) 899-5461 or www.goodlandlibrary.org.

The **AARP Tax-Aide program is available on Monday, Tuesday and Thursday from 1 to 6 p.m.** at Cat's TNT, 1018 Main, Goodland, until April 15. Their number is (785) 821-1827 to call for an appointment. The program helps low and moderate-income

8 p.m. on Sundays at 1013 Center. Call 890-8369.

Bird City Alcoholics Anonymous group meets at **6:30 p.m. (Mountain Time) on Fridays** at the Senior Center on 4th Street.

Narcotics Anonymous meets at 6:30 (Mountain Time) on Tuesdays at the Senior Center. Call (785) 734-2734 for more information.

thrift store

The Goodland Churches Thrift Shop, 1002 Main, is open from 10 a.m. to 5 p.m. on Monday through Friday. Donations welcome. The **daily specials** are 50 percent off men's department on Monday, 50 percent off housewares, furniture, electronics and crafts on Tuesday, 10 cent books on Wednesday, 50 percent off children's department on Thursday and 50 percent of ladies' department on Friday. For information call 890-2007.

health department

The Sherman County Health Department at 1622 Broadway is open from 8 a.m. to noon and 1 to 5 p.m. Monday through Friday.

Blood pressures; infants', children's and adults' immunizations; health assessments for Kan Be Healthy, daycare and school entry; fasting blood sugar and hemoglobin; and family planning available by appointment. Sharps containers are available for a fee. WIC program available. Call 890-4888 or go to www.sherman.kansas.com.

If you have questions, concerns or complaints about child care, call the health department.

Water Testing — The Northwest Local Environmental Protection

people prepare their taxes. Sites have been added for Hoxie. The program will be available from 9 a.m. to 3 p.m. (Mountain Time) on Fridays, March 21, and Friday, April 4. Call (785) 675-3102 to make an appointment.

The **Goodland Soup Bol** serves dinner at **5 p.m. on Monday nights** at the Goodland Methodist Church Fellowship Hall for anyone who wants to come. Free will donations welcome. For information call 899-3631.

The **Kids Cooking Class** is held on the **second Wednesday of each month** from 3:45 to 5:15 p.m. at the 4-H Building. This class is open for second to fifth graders. For information call 890-4880.

senior menu

Today: Chili, five cup salad, crackers and cinnamon roll. **Wednesday:** Cook's choice entree, au gratin potatoes, beets, bread and apricots. **Thursday:** Oven baked chicken, mashed potatoes with gravy, green beans, bread and gelatin with fruit. **Friday:** Italian fish, parslied potatoes, seasoned carrots, bread and rosy

Group does well evaluations, including testing for bacteria and nitrates. To schedule an evaluation or discuss environmental concerns, call the Health Department at 890-4888.

hospital volunteers

Gift shop hours are 9 a.m. to noon and 1 to 4 p.m.; a.m. and p.m. volunteers are in the gift shop. Today: a.m. Lana Ginn. Wednesday: a.m. Patti Purvis. Thursday: None. Friday: a.m. Avis Alcorn and p.m. Lana Ginn.

early head start

Early Head Start is a state funded program for income eligible families with prenatal mothers and children up to age three. Families participate in a variety of educational activities and receive free medical and dental care.

Services include special needs of children with disabilities. If you have a family member with a special problem, such as drug or alcohol abuse, job loss or other family crisis, your family can qualify. Call 785-672-3125, ext. 187.

preschool

Sherman County Head Start is a free preschool for eligible 3 and 4 year olds. The federally funded program is targeted to families who meet certain economic guidelines and provides hearing, vision, dental and educational screenings. Nutritious meals are served, and parents are encouraged to get involved in their children's education. For information call 890-2552.

applesauce.

school menu

Today: Breakfast - oatmeal breakfast round, yogurt cup, fruit, fruit juice and milk. Lunch - corn dog, spinach salad, peas, apple wedges and milk. **Wednesday:** Breakfast - breakfast pizza, fruit, fruit juice and milk. Lunch - beef and noodles, mashed potatoes, fresh baby carrots, blueberry oat muffin, pineapple and milk. **Thursday:** Breakfast - blueberry bubble bread, fruit, fruit juice and milk. Lunch - chicken quesedilla, tortilla chips and salsa, refried beans, orange and milk. **Friday:** Breakfast - whole wheat bagel with toppings, fruit cocktail, fruit juice and milk. Lunch - tomato soup, grilled cheese sandwich, celery and carrots, fruit and milk.

school calendar

Today: 6 p.m. sixth grade vocal concert in Goodland High School auditorium. **Wednesday:** 7:30 a.m. professional learning community. **Thursday:** 3 p.m. varsity softball at Hays. **Friday:** None.

mops

MOPS (Mothers of Preschoolers) meets the first Monday of every month October thru May. Meeting time: 6 p.m. -7:30 p.m. at the Harvest Evangelical Free Church; 521 E Highway 24; Goodland. For more information email goodlandmops@gmail.com or call (785) 890-6423.

crimestoppers

If you have information about any crime, call the Goodland Area Crime Stoppers "Look Line" at 899-5665. Your call will be confidential and you will not be asked your name. If the information results in the arrest and/or conviction of those involved, you could be eligible for a reward of up to \$1,000. Goodland Area Crime Stoppers is a nonprofit organization formed by citizens against crime.

The police department can also be called at 890-4570.

family shelter

The Northwest Kansas Domestic and Sexual Violence Services provides help day or night to victims of domestic violence and sexual assault. For information or help, call (800) 794-4624. In the Colby area, call (785) 443-1130.

animal shelter

Lost a pet? Call 890-4575 or go to www.petfinder.com and be sure to enter the Goodland zip code 67735. You can also call the Goodland Police Department at 890-4570 or Northwest Kansas Animal Shelter at 899-4398. Interested in adopting a pet? Call the animal shelter or go to the website www.nwkasgoodland.webs.com.

obituary

Philip L. Brian

Philip L. Brian, 84, Piscataway, N.J., former Brewster student, died Tuesday, March 4, 2014, at the Somerset Valley Rehab in Bound Brown, N.J.

He was born on July 20, 1929, to Leroy and Thela (Seigal) Brian in Lyndon. Mr. Brian grew up and went to school at Brownville and Brewster. The family moved to Piscataway, N.J., in 1968.

Mr. Brian enlisted in the U.S. Navy during the Korean Conflict and was a part of the USS Tarawa from 1953 to 1954. He was a chief boiler engineer for Henry Heide, Inc. in New Brunswick, N.J.

Preceding him in death were his wife Grace D. Brian in 1997, his parents and his youngest Sharon Brian.

Survivors include a daughter Beatrice Brian, Piscataway, N.J.; a son Philip Brian of Pennsylvania; a stepson Kenneth Angelo; three brothers, Ray (Phyllis) Brian of Hutchinson, Gene (Betty) Brian of Norton and Bob (Sharon) Brian of Miami, Fla.; three sisters, Dora Hopson of Colby, Dona Plantz of Topeka and Mary (Bill) Torbit of Mesa, Ariz.; and two grandsons.

Graveside services were at 9 a.m. (Mountain Time) on Friday, March 7, 2014, at the Resurrection Burial Park, Piscataway, N.J.

Visitation was from noon to 2 p.m. and 5 to 7 p.m. (Mountain Time) on Thursday, March 6, 2014, at the Piscataway Funeral Home, 18 Stelton Road, Piscataway, N.J.

Eveline Marie Saindon

Eveline Marie (Bechard) Saindon, 100, longtime Goodland resident, died Sunday, March 23, 2014, at Good Samaritan Society — Sherman County in Goodland.

She was born on June 9, 1913, to Angelina (Metro) and Joseph Bechard in Aurora, Kan. She attended school in Aurora and Oakley.

On Aug. 17, 1931, she and Walter Earl Saindon were married in Oakley. The couple made their home in Thomas County before moving to Goodland in 1945.

Mrs. Saindon belonged to Our Lady of Perpetual Help Catholic Church, Saint Cecilia Circle and Golden Buckle Campers Club.

Preceding her in death were her husband, her parents, many siblings and two grandchildren.

Survivors include two daughters, Patsy Cole of Lexington, Ky., and Gloria Gard of Huntington Station, N.Y.; a sister Luella Davidson of Hays; two grandchildren; four great-grandchildren; and a great-great-grandchild.

Graveside service and burial will be at 2 p.m. on Tuesday, March 25, 2014, at the Goodland Cemetery with Father Norbert Dlabal presiding.

Memorials to Hospice of Sherman County may be sent to Koons Funeral Home, 211 N. Main, Goodland, Kan. 67735.

sunflower 4-h

The Sunflower 4-H Club met on Monday, March 3, at the 4-H Building for its annual model meeting. Acting President Kinsey Volk called the meeting to order and Acting Vice President Rilynn Frazier led the club in the flag salute and 4-H pledge. Roll call of "Do you have a checking account?" was answered by 15 members, 10 parents and one leader. Wyatt Arntt led the club in singing "The ABC's."

Following a short business meet-

ing, Kinsey Volk read a poem, Nathaniel Salmans shared a 4-H fact, Rilynn Frazier shared a current event and Jared Quain shared a Health and Safety tip. A short recess was called for recreation and Kinsey Volk led the club in playing "Egg Relay."

The Fitzgibbons family served refreshments. The next club meeting will be April 21 and will be parents night.

Ryan Berls, reporter

Colby museum plans archaeology day

The Kansas Anthropological Association and the Prairie Museum of Art and History will co-sponsor this year's Archaeology Day at the Prairie Museum on Saturday, April 5, featuring three talks on historical and prehistorical topics.

At noon (Mountain Time), Steven and Kathleen Holen of the Center for American Paleolithic Research in Ft. Collins, Colo., will present "Early Humans in the Central Great Plains: Where Did They Come From and When Did They Arrive?"

At 1 p.m. (Mountain Time), local

historian Mike Baughn will discuss the Cheyenne Hole massacre on Sappa Creek in 1875.

At 1:45 p.m. (Mountain Time), archaeologist and former Cottonwood Ranch curator Don Rowilson will give an overview of northwest Kansas archaeology.

The program is free and open to the public at the Prairie Museum of Art and History, 1905 S. Franklin Avenue in Colby. Call Rob Aiken at (785) 462-6399 for more information.

PUBLIC NOTICE

Due to the County Assessors Property Valuation Notices that went out recently, the Sherman County Board of Commissioners want to remind the public that if they have a concern about the valuation on their property, they need to call the County Appraiser's office on or before March 31, 2014 to set up an appointment time for an appeal. Call: 785-890-4825

**Classifieds work!
899-2338**

The
Goodland Star-News
SUBSCRIBER

Brian Fugleberg

You receive two free passes to see:

**NON-STOP
(PG-13)**

Clip and bring to the show. Non Transferable

**The SHERMAN
THEATRE**

1203 Main Avenue • (785) 899-6103

Follow us on Facebook Goodland Star News

Specials for the week March 21-27

Drinks included. Dine-in or carry out!

Friday, March 21: Salmon Patties

Saturday, March 22: Soup and Sandwich

Sunday, March 23: Pork Chops

Monday, March 24: Spaghetti

Tuesday, March 25: Chicken Bowl

Wednesday, March 26: Ugly Steak

Thursday, March 27: Mexican Lasagna

Jct. of Hwys. 27 and 40, Sharon Springs, Kansas • Phone: 785-852-4664



American Profile
Celebrating Hometown Life

See American Profile magazine in this week's issue of

Your sponsorship could be right here!

(available in local area only)

Brought to you by:

The
Goodland Star-News

Call The Goodland Star-News
today for more information!
(785) 899-2338

Remembering the blue and the gray



The area's barbershop chorus, the Tumbleweed Chorus, had its annual show on Saturday at the Frahm Theater at Colby Community College. The program was tribute to the music of the War Between the States. Director for the chorus is Peggy Cabrinha

of Atwood. Included in the group were local members John Collett, Scott Briney and Ken Corke. Also singing were the Prairie Rose Harmony, the ladies barbershop chorus. Also singing were Uncalled 4, an area quartet, and the Rusty Pipes, senior quartet

champions from Cincinnati, Ohio. Dr. Phil Shuman directs the ladies group.

Photo by Sam Dieter/Colby Free Press

Cancer Society urges increased colon screenings

While a combination of earlier detection and better treatments have yielded a steady decline in the colorectal cancer death rate over the past 20 years, colorectal cancer will kill an estimated 50,310 people in the U.S. in 2014, including 480 in Kansas, according to the American Cancer Society.

Colorectal cancer is one of only a handful of cancers for which screening is proven to save lives, both by finding and removing polyps before they turn cancerous and by finding cancers early, when treatment is most likely to be successful.

During March, National Colon Cancer Awareness Month, the American Cancer Society is highlighting the need to do more to save lives from the nation's third leading cause of cancer death in both men and women by urging patients and their doctors to talk about the importance of colorectal cancer screening, which is recommended for people at average risk beginning at age 50.

"Although screening guidelines differ for some cancers, this is not the case for colorectal cancer," said Richard C. Wender, M.D., chief cancer control officer for the American Cancer Society and chair of the National Colorectal Cancer Roundtable. "All guidelines recommend screening with

either colonoscopy every 10 years or a stool test at home every year, and the benefit of screening is clear. Colon cancer screening accomplishes two things — it prevents colon cancers from developing by removing polyps and it detects cancers early when it is highly curable."

More than one in three adults aged 50 and older are not being screened as recommended for colorectal cancer. The American Cancer Society recommends that most people begin regular screening at age 50. People at higher risk, such as those with a family history of colon cancer, may need to start screening earlier.

"A great number of people do not understand that there are choices for being screened," Wender said. "If patients are offered a choice among several screening options, then we can increase the chance they will get screened. As we like to say: the best test for you is the one you get."

The Society recommends the following colorectal cancer screening tests:

- Tests that detect precancerous polyps and cancer: flexible sigmoidoscopy every five years; or colonoscopy every 10 years; or double contrast barium enema every five years; or CT colonography every five years.

- Tests that primarily detect cancer: yearly guaiac-based fecal occult blood test with high test sensitivity for cancer (older versions of the fecal occult blood test should not be used to test for colorectal cancer); or yearly fecal immunochemical test with high test sensitivity for cancer; or Stool DNA test.

Tests that detect precancerous polyps allow doctors to remove the polyps and potentially prevent cancer altogether. And while cancers detected at the earliest stage have a five-year survival rate of 90 percent, only 40 percent of colon cancers are currently detected at this stage, partly because too few people are screened.

The Society is increasing efforts during March and beyond to ensure more people are aware of the lifesaving potential of screenings.

"Public policies such as the Affordable Care Act are improving access to colon cancer screening, but we have a lot of work to do to ensure everyone has the opportunity to be screened," Wender said.

For information and guidance on colorectal cancer, go to cancer.org/fightcoloncancer or call the American Cancer Society 24 hours a day, seven days a week at (800) 227-2345.

corrections

The Goodland Star-News will correct any mistake or misunderstanding in a news story. Please

call our office at (785) 899-2338 to report errors. We believe that news should be fair and factual. We

want to keep an accurate record and appreciate you calling to our attention any failure to live up to this standard.

Brewster schools name third quarter honor role

The Brewster School District has released the Honor Roll for the third quarter. To be on the Superintendent's Honor Roll, students must earn a 4.0 grade average. Those on the Principal's Honor Roll must have a grade average of 3.5 to 3.99. Honor Roll students have an average of 3.0 to 3.49.

High School Principal's Honor Roll
Juniors: Dara Roulier, Layton Werth.
Sophomores: T-Aera Abbott, Tylor Cheatum, Rachel Friess.

Freshmen: Tad Holm, Jaden Schmidt.

Honor Roll
Seniors: Tanner Abbott, Yumi Inagaki.
Juniors: Alicia Barrie, C.J. Fellen.
Sophomores: Justin Schmidt.
Freshmen: Dalton Arntt, Ronnie Cloyd.

Junior High Superintendent's Honor Roll
Sixth Grade: Weston Schmidt.
Principal's Honor Roll
Seventh Grade: Desmond Pur-

vis.
Sixth Grade: Genesis Aguilar, Cameron Ford-Gillen.

Honor Roll
Eighth Grade: Austin Bear, Jacob Benham, Adrian Mercado
Seventh Grade: Karlee Brown, Lane Cheatum, Mckedzie Clymer, Mikenna Hanevik, Brett Roulier, Ben Roeder.
Sixth Grade: Anjel Blume, Morgan Bryant, Jacson Clymer, Autumn O'Brian.

matters of record

Sherman County Bastille
The following people were booked into the Sherman County Bastille:

March 14: Juan Ollarzabal, 19, Garden City, arrested by state trooper for possession of hallucinogenic drugs and drug paraphernalia possession.

Jonathan Orosco, 21, Garden City, arrested by state trooper for possession of hallucinogenic drugs and drug paraphernalia possession.

March 15: Michael Brown, 29, Manhattan, arrested by state trooper for possession of hallucinogenic drugs, drug paraphernalia possession and warrant for another jurisdiction.

March 16: Rafael Marcias, 33, Goodland, arrested by state trooper for driving under the influence, transporting an open container and unsafe turn.

Adare Webster, 42, Goodland, arrested by state trooper for driving under the influence and improper lane change.

March 17: Daezjon Brown, 22,

Goodland, arrested by city police for domestic battery.

District Court
These are cases decided by the Goodland District Court:
Nov. 7: Mario Lamant Mackey, speeding, fined \$201.
Gretchen L. Sedoff, speeding, fined \$165.

Nathan Sergio, speeding, fined \$183.
Katherine Anne Downey, speeding, fined \$171.

Nov. 8: Cory C. Ball, speeding, fined \$237.
Gage Mikel Gutkowski, speeding, fined \$153.

Jose E. Nunez, operate a motor vehicle without a valid license, fined \$156.
Miranda Ann Sandner, speeding, fined \$147.

Jonathan D. Stanfield, speeding, fined \$171.

Brenda Schell Steele, speeding, fined \$210.
Shadoe Logan White, defective muffler, fined \$159.

Nov. 9: Kirk Len Henderson, defective muffler, fined \$147.
Charles Lewis Terrell Seegars, vehicles, unlawful acts, e.g., registration, fined \$196.

Keithan Lane Smith, improper driving on laned roadway, fined \$171.

Enjoy a night at the movies!
www.goodlandnet.com/movies
Tonight 7 PM
Non-Stop (PG-13)
Starts Fri. 7 PM: Mr. Peabody & Sherman 3D (PG)

Bids needed for projects at Wolak Building

Sherman County is currently taking sealed bids for two projects at the Wolak Building. The first project is for repair of the sidewalk on the west side of the building. The second project is widening the ambulance bay door. Please contact Duane at 890-4849 to schedule a time to look at the project. Bids must be in County Clerk's Office by April 1, no later than 5 p.m. MT, and will be opened on April 8, 2014. Mailed bids are to go to: Sherman County Clerk, 813 Broadway-Room 102, Goodland, KS 67735.

Cleary has been building solid relationships for over 36 years for good reason — we treat our Clients like family.

CALL US FOR A FREE CONSULTATION!
785-462-2023
990 S. Range Ave.
Colby, KS 67701

Building pictured is not priced in ad. Crew travel required over 50 miles. Local building code modifications extra. Price subject to change without notice.

BUILDING SALE!
30'x40'x13' • \$13,085
42'x72'x15' • \$24,310
60'x104'x17' • \$49,825

FEATURING: Cleary FABRAL

800-373-5550 | ClearyBuilding.com

ATTENTION: AVIATORS

FAA Team presents:
Super Safety Saturday Aviation Educational Event

Event Details:
Saturday, April 5, 2014 • 9 a.m. - 3 p.m.
Hot lunch provided • Shalz Field, Colby, KS - KCBK

Select#: CEO754293
FPM JAMES ONEAL LAMB

For More Information, Contact: Mark Ostmeyer
(785) 460-4438 | (785) 443-4000 | mcas@st-tel.net

Directions: Located two miles north of Colby on K25
We would like to thank these presenters and the following sponsors for bringing this event to Colby:
Dillons Food Stores • Great Plains Spraying • CBK Flyers • MC Aviation Services

Hail the power of BACON!

Try our new
Bacon Clubhouse Burger!

A quarter-pounder with flavorful beef seasoning, or our premium grilled or crispy chicken patty,

applewood smoked bacon, white cheddar cheese, caramelized grilled onions, farm fresh tomato, crisp leaf lettuce and our special sauce on our new artisan roll.

McDonald's

GOODLAND LOCATION ONLY • OPEN DAILY 6 A.M. TO 11 P.M.

from other viewpoints...

Where would this road lead?

Last year several legislators crafted a proposal for changing the constitutional process chosen by the people of Kansas for selecting Supreme Court justices. These legislators sought endorsements by the Kansas Bar Association and the Kansas District Judges Association.

According to several sources, the endorsements would induce the Legislature to give judicial branch employees their first pay raise in more than 4 years. I told our 1500 employees that while the justices supported the pay raises, we opposed the trade. Later one of the crafting legislators publicly denied any linkage between the overdue pay raises and selection of justices and demanded my apology.

Recently one of these legislators advanced a new proposal. Linking money to other court issues can no longer be denied. Rather, it is glaring.

Instead of pay raises, this time legislative money is being offered to keep all Kansas courts open after July 1 – in direct exchange for some important restructuring of the judicial branch. More specifically, the money would be given if the association now endorsed the “package deal.” The package includes changing the statewide unified court system in two fundamental ways.

First, it allows the chief judge in each of Kansas’ 31 judicial districts to submit and control his or her own budget. Second, it allows the judges in each judicial district to choose their own chief judge. The Supreme Court has exclusively exercised the authority for both actions since at least the late 1970’s after a constitutional amendment.

All 31 chief judges – the ones most directly affected by the decentralizing budget provision – oppose it. Additionally, many prefer the Supreme Court’s traditional chief judge selection process, where for almost 40 years the Court has sought input from all judges and employees working closely with them before making the appointment. Chief judges and justices alike ask, “What needs fixing?”

One packaging legislator informed the association that without a positive statement about the entire package, it would fail. The money for keeping the courts open would then be lost. And no other legislative revenue proposal for keeping courts open was planned. In other words, no endorsement means closed courts. So while disagreeing with a significant part of the package, the executive committee concluded, “The KDJA can accept [it], because the courts of Kansas will be allowed to remain open for business.” The Kansas Senate approved it a few hours later.

The Supreme Court strongly opposes the package – for reasons that should be clear. Most objectionable is the diffusion of the unified court system’s centralized authority in exchange for money to keep Kansas courts open.

As the package moves through the House of Representatives, all Kansans should ask themselves at least two questions:

First, is this package true to the will of the people when they voted to change their constitution and place all administrative authority under the Supreme Court and to eventually unify all Kansas courts?

Second, if Kansans start down the road where judges feel compelled to help bargain away the Court’s authority, where does that road end? Will otherwise fair and impartial judges be asked to decide court cases the way some legislators want them to be decided – in exchange for money to keep the courts open for the people of Kansas they all are supposed to be serving?

—Lawton R. Nuss, Salina native and a fourth-generation Kansan. He has served on the Kansas Supreme Court since 2002 and as chief justice since 2010.

The Goodland Star-News

(USPS No. 222-460. ISSN 0893-0562)

Member: Kansas Press Association

Inland Press Association Colorado Press Association

National Newspaper Association

e-mail: star.news@nwkansas.com

Steve Haynes, President
Kevin Bottrell, Editor
Pat Schiefen, Society Editor
Advertising Department

Jessica Harenberg and Angela Bonham
Sheila Smith, Circulation Manager

Nor’west Press

Richard Westfahl, General Manager
Gary Stewart, Jim Bowker, James Jackson
Kris McCool, Tracy Traxel,
Judy McKnight.



nwkansas.com

N.T. Betz, Director of Internet Services
(nbetz49@nwkansas.com)

Evan Barnum, Systems Admin. (support@nwkansas.com)

Published every Tuesday and Friday except the days observed for New Year’s Day, Memorial Day, July 4th, Labor Day, Thanksgiving and Christmas Day, at 1205 Main Ave., Goodland, Kan. 67735.

Periodicals postage paid at Goodland, Kan. 67735; entered at the Goodland, Kan., Post Office under the Act of Congress of March 8, 1878.

POSTMASTER: Send address changes to The Goodland Star-News, 1205 Main Ave., Goodland, Kan. 67735.

TELEPHONE: (785) 899-2338. Editorial e-mail: star-news@nwkansas.com.

Advertising questions can be sent to: goodlandads@nwkansas.com

The Goodland Star-News assumes no liability for mistakes or omissions in advertising or failure to publish beyond the actual cost of the ad.

SUBSCRIPTIONS: In Sherman County and adjacent counties: three months, \$29; six months, \$46; 12 months, \$81. Out of area, weekly mailing of two issues: three months, \$39; six months, \$54; 12 months, \$89 (All tax included). Mailed individually each day; (call for a price).

Incorporating:

The Goodland Daily News
1932-2003

**The Sherman
County Herald**

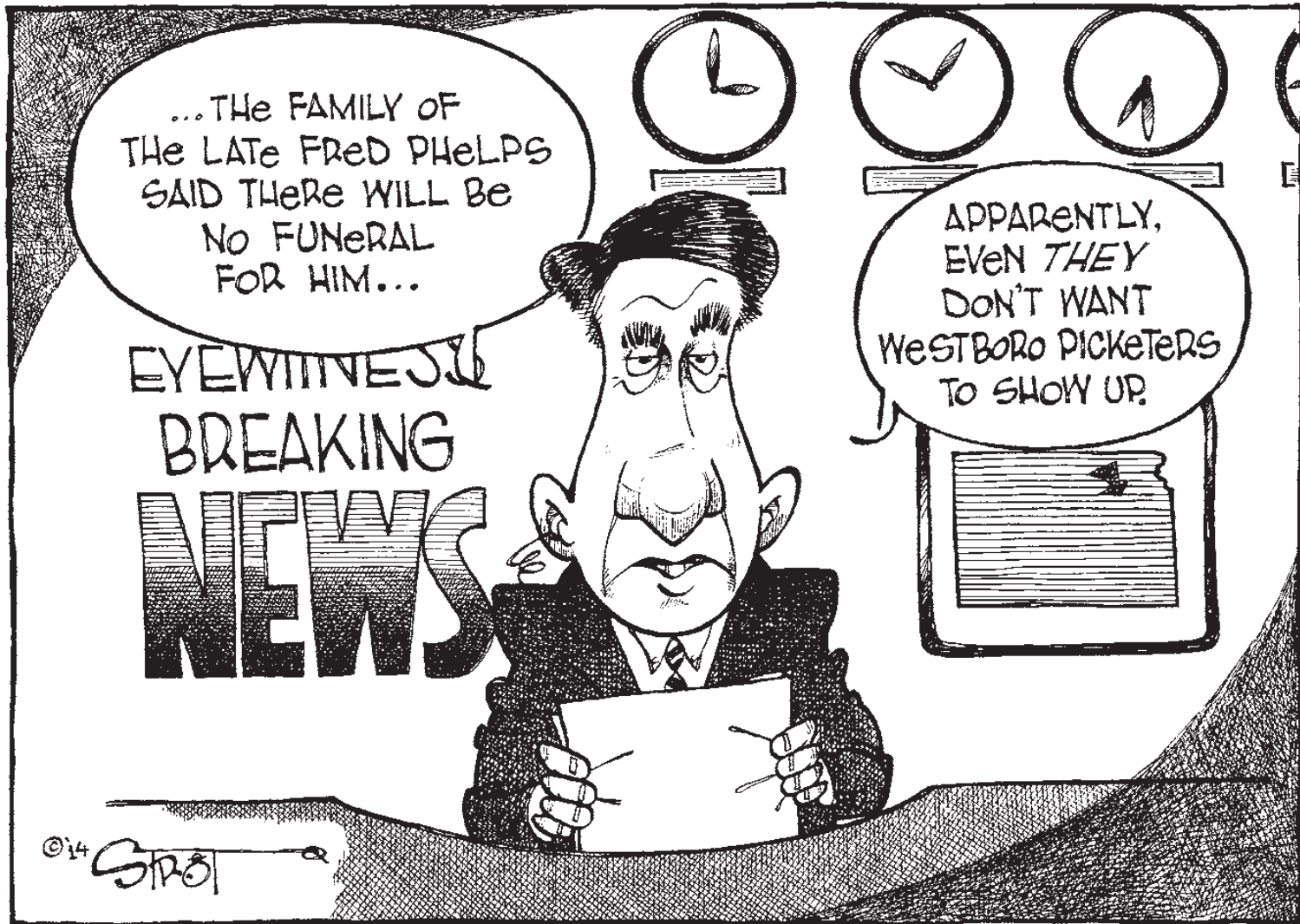
Founded by Thomas McCants
1935-1989

**THE SHERMAN COUNTY
STAR**

Founded by Eric and
Roxie Yonkey
1994-2001

Nor’West Newspapers

Haynes Publishing Company



Two higher ed trainwrecks



education frontlines

• John Schrock

Higher education officials in Kansas sighed with relief. The Kansas Supreme Court did not mandate \$400+ million more in K-12 funding. But that ruling punted the education adequacy decision to lower courts. If that postponed decision comes in 2015, it will coincide with another disaster that could result in far worse higher ed funding than had these disasters occurred separately. The dramatic enrollment downturn due to the Qualified Admissions standards could trigger a major cut in university funding.

Kansas universities have taken small hits in funding three times over the last three decades. Kansas is a balanced budget state. Kansas cannot spend more than it receives in tax revenue. When taxes fell below estimates, state entities including universities had to give back allocated money. These “rescissions” occurred mid-year. But those amounts were minor compared to the shortfall that will occur due to the recent dramatic state tax cuts combined with any future ruling to restore funding to K-12 schools.

K-12 schools consume half of the state tax dollars. Other state agencies have been cut to the bone, leaving support for public universities the most vulnerable state expense. While the KS Supreme Court decision requires the state to address the equity issue, and either allocate \$100+ million to poorer K-12 schools or tinker with the funding formula, the lower court decision on adequate funding continues to threaten Kansas public university funding.

If the decision to increase K-12 funding comes down in fall of 2015, that train wreck will coincide with a second disaster: the dra-

matic drop in regent school enrollments due to the Qualified Admission.

Kansas legislators will then have the perfect solution. They can shift large amounts of money from shrinking universities to K-12 schools and not raise taxes.

That would result in a university draw-down on the scale of the 1970s nationwide post-baby boom drop off in university enrollment. That was an academic blood-bath. Under financial exigency, tenured professors were fired. Departments were closed. Meanwhile, Kansas community colleges and Washburn will overflow, not being bound by the Qualified Admission standards.

Only the Kansas Board of Regents can address this issue. Unfortunately, many in higher education remain in denial, expecting this problem to go away. After all, over three years ago the regents announced the tougher standards that added an extra math and would move from ACT-of-21 OR QA curriculum, etc. to ACT-of-21 AND QA curriculum, etc. So, when the KBOR issues commands, the Kansas high schools that send students to Kansas colleges must follow – right?

Wrong. Despite recent school consolidation, some rural Kansas schools still graduate less than ten students. That is a complete high school of less than 40 students. Such small

schools cannot hire teachers to teach just math or just science. Their small staff must teach across disciplines. There is no talent nor time to offer the added course.

Even in larger schools that offer the full QA curriculum, there are many students who just do not have the interest to pursue the added math. That is not to say that they are not “college-able.” They want to study literature or art or history. But they are not going to take that extra year of high school math. In fall 2015, they will have to attend community colleges first and transfer to a four-year school later. Some Kansas universities will lose over 40 percent of their freshman class.

Topeka officials believe that they only need to mandate that something be done, and it will be done. They do not recognize that they cannot enforce mandates that are beyond the capacity of schools and students. The extra math was a-course-too-far. Some of our future Einsteins and Rembrandts will have to attend community colleges for awhile rather than state universities because the KBOR insisted every college student must be better in math.

There is no wiggle-room to “gradually” or partially implement the QA standards. They were set in regulations. Putting them off a year or two solves nothing. This problem will still remain the third year onward.

The regents have less than a year to bring QA requirements back to reality. If they do not, the resulting drop in enrolments in 2015 can provide our Legislature with a rationale for switching funding to K-12.

Protein for breakfast



Insight this week

• john schlageck

The old adage bears repeating – eat breakfast like a king, lunch like a prince and dinner like a pauper.

Put another way, nutritionists believe breakfast is the most important meal of the day. It breaks the fast, provides fuel for the body and prepares for healthy nutrient intake.

Breakfasts vary, however, and beginning your day with a meal that includes plenty of high quality protein remains the foundation for experiencing healthy benefits.

The ideal breakfast for weight loss contains 25 to 30 grams of high-fiber, low-sugar carbohydrates. Foods such as eggs, lean meat, low-fat dairy, beans afford good choices for breakfast as well.

“If you’re too busy for breakfast, you’re probably giving up more than a meal,” says Karen Hanson, Manhattan Hy-Vee registered dietician. “Research shows kids who eat breakfast perform better in school. And if you’re trying to lose weight, eating breakfast jumpstarts your metabolism and keeps you from overeating later.”

Children rely heavily on a consistent food intake, the dietician notes. If they miss breakfast, that period of semi-starvation before lunch can create physical, intellectual and even behavioral problems.

Kids who eat breakfast and are physically

active concentrate better. They typically score higher on tests.

Keep grab-and-go items like cereal, yogurt, fruit and string cheese on hand for busy mornings. On those really rushed mornings, kids can eat in the car on the way to school or day care. It’s better than not eating at all.

Other tips include making oatmeal with milk instead of water; eating lunch, dinner or snack foods (ham and cheese sandwich, leftover veggie pizza) for breakfast; or using yogurt or low-fat milk to make breakfast smoothies. Adults need a breakfast boost too.

“Breakfast recharges your brain and body after the overnight fast,” Hanson says. “If we skip breakfast, our body responds by increasing hunger and hanging on to calories. If you’re trying to lose weight by skipping breakfast, you’re sabotaging yourself.”

A bowl of whole-grain cereal and a banana is

a quick breakfast that will keep you focused all morning. Try leftover pizza with 100 percent juice if you’re not a breakfast-food fan.

A balanced breakfast makes a big difference in overall health and well-being, Hanson says. Here are three tips for making breakfast fit into your morning routine.

Organize the night before. Set the table with bowls and spoons for cereal. Ready a blender for smoothies. Make muffin or waffle mix so it’s ready to cook in the morning.

Keep it simple with a bowl of high fiber, higher protein cereal and fruit.

Pack breakfast to go. Plan a nutritious breakfast that can be eaten in the car or on the bus. Teens might like a banana, a bag of trail mix and a carton of milk. You can also check out breakfast options at your child’s school.

A recent *American Journal of Clinical Nutrition* study suggests a breakfast containing 35 grams protein from lean beef and eggs leads to improved appetite control and satisfaction throughout the day.

Eating breakfast results in diet quality. It sets the stage for the rest of the day while moderating appetite swings and improving vigilance and memory tasks.

where to write

U.S. Sen. Pat Roberts, 109 Hart Senate Office Building, Washington D.C. 20510. (202) 224-4774; website – roberts.senate.gov.

U.S. Sen. Jerry Moran, 354 Russell Senate Office Building, Washington, D.C. 20510. (202) 224-6521; Fax (202) 228-6966. website – <http://moran.senate.gov>.

U.S. Rep. Tim Huelskamp, 1st Congressional District, 126 Cannon House Office Building, Washington D.C., 20575-1601. (202-225-2715) Website – <https://huelskamp.house.gov>.

State Rep. Ward Cassidy, State Capitol Building Rm 151-S, 300 SW 10th, Topeka, Kan. 66612. Phone (785) 296-7616, home (785) 332-2850; e-mail address ward.cassidy@house.ks.gov.

State Sen. Ralph Ostmeier, State Capitol Building, Rm. 136-E, 300 SW 10th, Topeka, Kan. 66612. (785-296-7399; e-mail address ostmeier@senate.state.ks.us.

Kansas Attorney General, 301 S.W. 10th, Lower Level, Topeka, KS 66612-1597 (785) 296-3751 Fax (785) 291-3699 TTY: (785) 291-3767

Lyndon Johnson’s War on Poverty – 50 years later

Take a journey back in time 50 years, to January 1964. The State of the Union address by former U.S. President Lyndon B. Johnson brought attention to poverty, which later led to the passing of federal legislation to assist citizens in need. That same month, Bob Dylan released his album “The Times They Are A-Changin’,” a collection of songs that spoke to a time of social change and the issues of racism and poverty.

While many things have changed since 1964, time hasn’t brought much change to some areas of concern. When Johnson’s War on Poverty commenced, the U.S. poverty rate was around 19 percent, according to the U.S. Census Bureau. The census’ most recent overall poverty rate (www.census.gov/hhes/www/poverty/about/overview/index.html) from 2012 is slightly down from 50 years ago at 15 percent, but the poverty rate for children under age 18 is nearly 22 per-cent.

In Kansas (quickfacts.census.gov/qfd/states/20000.html), that census showed a current overall poverty rate at 13 percent, slightly down from the national average. The childhood poverty rate, though, is a percentage point higher in Kansas, according to 2013 data from the Kansas Action for Children (kac.org), a nonprofit organization committed to improving the lives of Kansas’ families and children. Nearly one in four Kansas children live in poverty.

“I think the growth in poverty is a long-term trend in Kansas,” said Shannon Cotsoradis, president and chief executive officer of the Kansas Action for Children. “If you look back to 2003, we were just under 12 percent of children living in poverty. Now we’re just under 24 percent, so it’s almost doubled in the last decade.”

In an attempt to lessen Kansas’ poverty rate, a group of Kansas State Research and Extension professionals, including campus faculty, state specialists and agents, plan to undergo training in a curriculum called “Together We Can: Creating a Healthy Future for our Family,” which was developed by Michigan State University Extension. The “Family and Child Development” program focus team is the Kansas

State group that will receive training later this spring.

Once the team members are trained in the curriculum, as well as the social and economic factors that impact families near poverty, they will be more prepared to provide community programs and support throughout the state in the curriculum’s six focus areas: positive co-parenting relationships, stress and conflict management strategies, ongoing involvement of both parents, money management/child support payment, and healthy decisions about couple relationships.

Lisa Newman, a family development agent for the Kansas State Research and Extension Central Kansas District, is a co-chair for the “Family and Child Development” team. The team members, she said, will use the curriculum to help families out of poverty in the local communities they serve. The curriculum’s particular focus is on young, single-parent families, as many people in poverty come from single-parent head of households.

According to the Centers for Disease Control and Prevention’s National Vital Statistics Reports, the most current data from 2011 shows the birth rate for unmarried women (www.cdc.gov/nchs/data/nvsr/nvsr62/nvsr62_01_tables.pdf#104) in the United States at 41 percent, which is slightly down from 2007-2008 but still up from 33 percent in 2000 and 18 percent in 1980. In Kansas, the current rate is just over 37 percent.

Newman said she looks forward to using the “Together We Can” curriculum in the work she does in Ottawa and Saline counties. A recent report by Kansas State examining child and family well-being in Kansas showed that Saline County particularly was in the top five Kansas counties for childhood poverty at just over 28 percent and was also higher than the state and national averages in birth rate for unmarried women at 48 percent. More Kansas county data can be found by accessing the report online at www.dcf.ks.gov.

Newman is currently on the guiding coalition for Circles of the Heartland for Saline County, a local group that is part of the Circles USA national initiative to equip families

and communities to resolve poverty, and works with the Wichita-based Kansas Leadership Center on poverty issues.

“I try to be that field faculty member who is able to provide resources, whether that is the programming with ‘Together We Can’ or helping with whatever resources I can pull together from state specialists from Kansas or somewhere else in the country,” Newman said. “It gives me great comfort knowing I have access to research-based, safe, reliable resources to provide to families in need.”

Reasons behind poverty

According to the U.S. Department of Agriculture’s Economic Research Service, “any individual with total income less than an amount deemed to be sufficient to purchase basic needs of food, shelter, clothing and other essential goods and services is poor.”

The amount of income necessary to purchase these basic needs is the poverty line. The current poverty line for a family of four, for example, is \$23,550 before taxes. Current federal poverty lines for all sizes of families can be found on the U.S. Department of Health and Human Services website (aspe.hhs.gov/poverty/13poverty.cfm).

Elaine Johannes is an associate professor and extension specialist in youth development for the School of Family Studies and Human Services at Kansas State University and serves as co-chair with Newman on the ‘Family and Child Development’ team. She said there are numerous reasons behind poverty in Kansas.

The single-parent head of household situations play a big factor, Johannes said. Single parents are primarily females who are often unemployed, or most likely, underemployed. Minimum wage last went up in 2009 and is currently \$7.25 per hour in the United States.

In some situations, she said, there is a lack of full-time, well-paid positions available due to industries leaving the state or businesses scaling back due to a slow recovery from the economic recession that hit five years ago.

“The answer to this real dilemma is complex,” Johannes said. “We also have to look at the safety net

programs that have formally been funded and are no longer receiving the same amount of funding. We formally had sustainably funded safety net programs like child health insurance, Head Start, access to early education, certain subsidies for housing and access for TANF, for example.”

Johannes said when all of these things make it more difficult for parents to make ends meet, more children become eligible for free and reduced meals in schools. According to the Kansas Action for Children, nearly 50 percent of Kansas schoolchildren received free or reduced price lunches in 2013, an increase from 43 percent in 2009. This is where child hunger becomes a concern.

“When school is not in session, these kids are not eating in many cases or maybe are fortunate if they get one meal a day,” Cotsoradis said. “There aren’t a lot of sites for kids to access free and reduced meal programs during the summer months in Kansas.”

A family and community issue

When children are born into poverty, they face numerous challenges. According to Child Trends (www.childtrends.org), a nonprofit organization that provides information about the well-being of U.S. children and youth, poverty harms a child’s brain and other body systems, leads to poor health, and creates and widens achievement gaps. Poor children are more likely to live in neighborhoods with more crime and violence, and they often have a home environment with more stress, aggravation and depression among family members.

Also, poor families from rural communities are more susceptible to living in poverty, according to a recent USDA-ERS report (www.ers.usda.gov/topics/rural-economy-population/rural-poverty-well-being/geography-of-poverty.aspx#howis). Johannes said rural communities might not have grocery stores close by where families can use Supplemental Nutrition Assistance Program benefits, or are too small to have childcare availability or a Head Start program in place. The Kansas Action for Children reported that currently there are only 43 slots available in Head Start

programs for every 100 eligible children across the state.

People, especially in rural communities, often do not have close access to healthcare, including mental health treatment.

“It’s not only early childhood poverty that is a concern, especially when you think about teen suicide,” Johannes said. “When a young person is growing up in chronic poverty, they either build resilience and move through it, they acquiesce to it and continue in the cycle which seems to be what mostly happens, or they become so depressed and dismayed that they give up.”

If people don’t notice poverty in their communities, Johannes said, they probably intentionally don’t notice it because it is scary to think about.

“Even here in Manhattan, we see people standing outside with homeless signs,” Johannes said. “I think people see that, become fearful and ask themselves, ‘If it happens to them, can it happen to me?’ It can. Many Americans are on a bubble and can go either way.”

Building strong communities

Johannes said given all of the issues that influence poverty, it is going to take a full community to help people get out of it.

“‘Together We Can’ really equips our agents to work in concert with faith, business, education, health, industry and other community circles, to address well-being and family poverty from a lot of different perspectives,” Johannes said. “We might not have the one solution, but we are equipped to bring evidenced-based knowledge and systems support to work in concert with communities.”

Integrating the curriculum into an established community group or program is key to helping it reach more people.

“Our successful agents embed their work inside of coalitions, systems, networks and safety net agencies of public health and schools, for example,” Johannes said.

Newman’s work with the Circles of the Heartland for Saline County is an example of an agent finding success working inside another community group. Newman said she can see “Together We Can” being applicable also to local Head

Start programs, community action programs or any other programs or groups where those in poverty can be reached.

More home and family resources are available on the K-State Research and Extension website (www.ksre.k-state.edu/p.aspx?tabid=22).

UPCOMING EVENTS in Kansas

Brought to you in part by Kansas Department of Wildlife, Parks & Tourism

Butler County Unveiled
March 28-29, El Dorado Civic Center
Make your Flint Hills Wedding dreams come true! Sample cakes, hear music, meet photographers & gain hundreds of tips. Top your day off with a fashion show!
ButlerCountyBridal.com

Kansas State Parks Open House
March 29, Statewide
Free entrance day and open house at all 26 Kansas State Parks. Most parks have a variety of special events lined up for the day! Sign up for your chance to win a one-night cabin stay! Learn more and view activities at ksoutdoors.com/state-parks

Safari Film Fest 2014
April 25-26, Chanute
Live the Adventure!
Celebrate explorers Martin & Osa Johnson with feature films, matinees, documentaries, and family activities including a Museum Open House.
(620) 431-2730, safari-museum.com

Get your State Parks Passport
Save \$10 on an annual State Park Permit when you register your vehicle in Kansas and gain access to recreational opportunities at all Kansas State Parks. Park permits are also available at all park offices. Visit ksoutdoors.com for more info.





Red Cross offers flood warning app

The American Red Cross has a new Flood App to help save lives and reduce losses from floods and flash floods.

This free app gives iPhone, iPad and Android smart phone users instant access to local and real-time information, so they know what to do before, during and after a flood. The content is available in English and Spanish based on the user’s language settings on their mobile device. The app includes location-based, audible flood and flash flood watches and warnings – even if the app is closed.

Other features of the app include: one-touch “I’m safe” messaging

that allows users to send a message letting family and friends know that they are out of harm’s way; pre-loaded content that gives users instant access to critical action steps, even without mobile connectivity;

toolkit with flashlight, strobe light and audible alarm to let others know where you are; locations of open Red Cross shelters; and real-time recovery resources for returning home and cleaning up.

USED VAN FOR SALE BY SEALED BIDS

1999 Chevrolet Venture Van that has 126,139 miles. Van can be seen at the Sherman County Courthouse. Call 785-821-1863 for an appointment. **Bids must be in County Clerk’s Office by March 28, no later than 5 p.m. MT, and will be opened on March 31, 2014. Mailed bids are to go to:** Sherman County Clerk, 813 Broadway-Rm.102, Goodland, Kansas 67735.

March SUPER SALE

QSI
Quality Structures, Inc.
www.qualitystructures.com
800-374-6988

Take ADVANTAGE of our LOWEST PRICES OF THE YEAR! THROUGH MARCH 31st

Specializing in Complete Post Frame Buildings.

QUALITY
3-Ply Laminated Columns
#2 and Better Framing Lumber
All Steel Entry and Garage Doors
Rust Resistant Painted Steel Exterior
Screw Application on Exterior Steel

DURABILITY
60 yr. Column Warranty
40 yr. Steel Warranty
10 yr. Entry & Garage Door Warranty
5 yr. Workmanship Warranty
Builders Risk Policy

STRENGTH
90 Mph Wind Load
30 Lb. P.S.F. Truss Load
Roof And Wall Wind Bracing
Trusses Designed for Ceiling Load
Engineered to meet or exceed local code

FULLY INSURED Experience the QSI Advantage FREE ESTIMATES

April Consultant Schedule

ALLERGIST**	Jeffrey Rumbyrt, M.D.	April 21
CARDIOLOGIST**	Barry Smith, M.D.	April 9 & 23
CARDIOLOGIST	Vijay Subbarao, M.D.	March 13
COUNSELING SERVICES	Thursdays by Appointment	
DERMATOLOGIST	Theodore Alkousakis, M.D	April 15
DIETITIAN	Sarah Linton, RD, LD, CDE	Tuesdays by Appointment
EARS, NOSE, THROAT	Alfred N. Carr, M.D.	April 4 & 11
GASTROENTEROLOGIST	Jeffrey D. Huston, M.D.	April 1, 14 & 15
GENERAL SURGEON	David D. Beck, M.D.	TBD
GENERAL SURGEON	Jeffrey Cross, M.D.	TBD
GYNECOLOGY	Laura Rokosz, M.D.	April 2 & 30
OBSTETRICS/GYNECOLOGY	David Forschner, M.D.	April 16
ONCOLOGY	Prakash Neupane, M.D.	April 4, 11, 18, 25
OPHTHALMOLOGIST	Brian Joondeph, M.D.	April 16
OPHTHALMOLOGIST**	Eric Fry, M.D.	April 18
OPHTHALMOLOGIST	Robert Fante, M.D.	April 25
ORTHOPEDIST	Tim Birney, M.D.	April 14
ORTHOPEDIST	Armond Hatzidakis, M.D.	April 7
ORTHOPEDIST	James Holmes, M.D.	April 21
ORTHOPEDIST	Edward Parks, M.D.	May 27
ORTHOPEDIST	Raj Bazaz, M.D.	April 14
ORTHOPEDIST	Kevin Nagamani, M.D.	April 9
PATHOLOGIST	Pathology Services P.C.	Call for Availability
PODIATRIST	Erik Ouderkirk, D.P.M.	April 9
PODIATRIST	Daniel Mallett, D.P.M.	April 23
PULMONOLOGIST	Ken Weisiger, M.D.	April 3, 17, 24 & 25
RADIOLOGISTS	Professional Radiology Services	WEEK DAYS
SPEECH THERAPY	Crystal Schultz	Monday – Thursday
UROLOGIST**	Kevin McDonald M.D.	April 9
UROLOGIST**	Wallace Curry, M.D.	April 1

For an appointment please call 785-890-6030

**For an appointment with Dr. Rumbyrt please call 1-888-849-8424

**For an appointment with Dr. Fry please call 1-800-526-3937

**For an appointment with Dr. McDonald or Dr. Curry please call 1-877-312-1619

**For an appointment with Dr. Smith please call 855-744-1065

Goodland Family Health Center
106 Willow Road • (785) 890-6075
Monday – Friday, 8:30 a.m. to 5 p.m.
Walk-in Clinic M-F 8:30 a.m to 9:30 a.m.
Saturday Clinic 9-11 a.m.

Dr. Mohedine Shafei (Out of office on Monday)
Dr. Douglas Van Marel (Out of office on Friday)
Dr. Travis Daise (Out of office on Wednesday)
Dr. Kali Rubenthaler (Out of office on Thursday)
Dr. David Younger (Out of office on Thursday)
Jackie Jorgensen, ARNP (Out of office on Friday)
Dr. Lisa M. Unruh – Pediatrician (Out of office on Tuesday)

Goodland Regional Medical Center

Wedding & Prom Planning Guide

Wedding and Prom seasons are fast approaching. We've compiled great information to help you in your quest for the perfect event.

Bride's Wedding Checklist

10-12 months to go:

1. Establish budget-decide priority of where to save and where you would be more likely to splurge.
2. Start guest list.
3. Choose wedding party. Who's going to be at your side on your big day?
4. Start narrowing down venues.
5. Tell everyone to save the date!

6-9 months to go:

1. Continue research on venues, flowers, entertainment, etc. It would be wise to get everything in writing once finalized.
2. Time to create your gift registry!
3. Arrange hotel rooms for out-of-town guests, and be sure to book your own suite if desired.
4. This is a good time to decide and start to finalize bridesmaid and flower girls dresses.
5. Start deciding on bachelor/bachelorette parties.

3-5 months to go:

1. Book locations, entertainment, catering and cakes if necessary.
2. Shop for and reserve men's formal wear.
3. Finalize these things: guest list, invitations, vows, menu, hair and make-up, honeymoon plans, photographer.
4. Purchase the rings!

6-8 weeks to go:

1. Mail out invites!
2. Touch base with vendors, pay deposits and confirm dates and details with them.
3. Start researching marriage license details and name-change paperwork.
4. Begin dress fittings. Also be sure to buy the appropriate undergarments!
5. Write thank you cards for any early wedding gifts you may have received.

3-5 weeks to go:

1. Make final shotlist with photographer.
2. Obtain marriage license.
3. Final dress fitting!
4. Hunt down anybody that hasn't RSVP'd!
5. Confirm song list with DJ if you have one.

1-2 weeks to go:

1. Give caterer final guest count.
2. Create seating chart if needed.
3. Check weather and have a back-up plan if needed.
4. Start packing for that honeymoon!
5. Pamper yourself with a massage!

THE DAY BEFORE:

1. Get rings and marriage certificate ready.
2. Assign someone to pack up gifts after reception, and have someone to take back formal wear rentals the next day.
3. Head to bed early and get that beauty rest!

Prom & Wedding Beauty Dos and Don'ts

1. **DO** choose a classic 'do. You want your hairdo to be timeless, and not embarrassing when you pull out that prom or wedding photo 20 years down the road. Use clean lines and keep it simple, and avoid straying too far from your normal comfort zone.

2. **DO** use simple make-up. Save the blue eyeshadow and dark red lipstick for Halloween. Natural beauty photographs so much better anyway!

3. **DO** keep your beauty routine the same. Now would not be a good time to try out that new pimple cream, only to find out you have a reaction to it.

4. **DON'T** wear body glitter! You and your date/groom will be the best glittery couple around! Instead, opt for a lotion that has a slight shimmer.

5. **DON'T** opt for dewy skin. When you plan on taking pictures, your skin may instead look greasy and oily. Instead, use a shine control mask to help diminish any shine.

6. **DON'T** eat foods that increase bloating (dairy, fizzy drinks, caffeine, salt, coffee, junk food, etc.)

The Dress

1. **DON'T** show too much skin! A thigh-high slit, cutouts and a plunging neckline will make you look classless instead of classy.

2. **DO** choose a figure-flattering silhouette. It's worth the extra dollars to have your dress tailored to your body shape.

3. **DO** choose a comfortable dress and shoes also. You want to be able to dance the night away in comfort!

4. **DON'T** spend your entire savings on a dress. There are many places that have affordable dresses. No need to spend every penny on a dress for one night.

Shop these great sponsors for your special occasion!

Whether it's casual or formal, we have just what you're looking for!

Book your Bridal Showers, Rehearsal Dinners and Wedding Receptions!

We offer full food & beverage catering menus!

City Limits Convention Center

2227 S. Range
Colby, KS
785-460-0131



TUXEDO, BRIDAL & PROM SHOP

Pure Elegance Bridal

Prom Dresses
Bridal Gowns
Bridesmaid Dresses
Mother of the Bride Dresses

Tuxedos
Jewelry,
Shoes &
Accessories



Centennial Plaza
2514 Vine St., Hays
(785) 621-4480
pebridals@gmail.com

**Mon-Fri 10-5
Sat 10-3**
After hours by appointment
www.pebridal.com

PROM SPECIAL

Book a prom hair appointment with **LISA** or **AMBER**, and get a **FREE** mini mani with **MELODY**! Call today, spaces fill fast!

Ask about wedding hair and nail appointments also!

Amazing Hair & Nails

1016 W. Highway 24, Suite #2, Goodland
Ph: (785) 890-4440

Prom Tuxedo Headquarters!

Call today for a tux ordering/measuring appointment for your Prom or upcoming Wedding.

We carry a nice variety of Prom and Wedding jewelry also!



ZIMBELMAN'S Jewelry

327 14th Street, Burlington, CO 80801
Phone: (719) 346-8623
www.zimbelmansjewelry.com

Grins & Giggles Photo Booths & Portraits

Creating Fun & Capturing Memories
Providing Entertainment Services To All Events!
Fully Equipped for In-Door and Out-Door Events.

Weddings, Proms, Graduation Parties, Sweet 16's, Anniversaries, Family Reunions, Corporate Events, School Functions, Fund Raisers
Serving Eastern CO - Western KS, SW Nebraska and Beyond!
Burlington, CO - 719-340-1003

See Full Details @ www.grinsandgigglesphotoboos.com
Mention you saw our ad in this paper and receive a Special Bonus and Discount at the Time of Booking.



High School Prom and your Wedding are both very special occasions. Let us make you one-of-a-kind jewelry, corsages and boutonnieres, tiaras and other keepsakes that are as unique as you are. We can coordinate colors too!



Designs Unlimited, LLC

1012 Main, Goodland • (785) 890-7673

READY FOR PROM?

Have you booked your appointment for hair, tanning or nails for Prom? Call Page today!

Also taking appointments for Weddings. We can help you look your best on that special day!

MARCH SPECIAL: Book a paid Mani with Page, receive free bottle of polish!

Klip n' Kurl Salon
Goodland's Premier Salon & Spa
1120 Main, Goodland, KS • PHONE: (785) 899-3942



Wedding & Prom Planning Guide

Wedding Tuxes Timeline

3-6 months to go: Decide which retailer you want to use. Color choices need to be narrowed down also.

2-5 months to go: Select the tux style you wish to go with and place your order.

6-8 weeks to go: Measurements should be collected and given to the tux retailer. The groom and any local groomsmen should visit the retailer to be measured and fitted.

1 week to go: Final fittings and pick up tuxes.

1 business day after wedding: Return those tuxes to avoid any late charges!

Prom and Wedding Flowers

Color coordination is BIG! Know what colors you are wanting, and also be open-minded about your flower choices. Some flowers may not be in season, but there are always similar flowers to what you are wanting.

For Prom, be sure to decide on colors, and give your florist AT LEAST a 2-3 week notice.

For Weddings, a 3-4 month (if not more) notice would be ideal. Also, bring your florist to your wedding location.

He or she can help give great ideas.

Getting There is Half the Fun!

Are you splurging for a limo? OH what about a horse-drawn carriage! Is Dad letting you borrow that classic car he's had stored in the garage for the last 15 years?

No matter which way you arrive to your Prom or Wedding, be sure to match your ride to your taste. You don't have to go with the glitzy limo ride...pulling up to the high school or church in a John Deere tractor could be quite memorable! If you are a person to think outside the box, your possibilities are endless!

Also, if borrowing someone's vehicle, be sure to give the person plenty of notice. You don't want them out of town at a classic car show the weekend of Prom or your Wedding.

Tickle Those Tastebuds!

Whether you're thinking BBQ or Italian, 5-star or 2-star, your budget plays a big role in how to cater your wedding.

If the budget is tight, bribe family into helping make the fixings. If the budget is loose, then go for the caterer. As long as you know how many mouths you are feeding, delicious food is always possible.

Also be sure to know if any guests may be vegan, or if Aunt Susan is horribly allergic to peanuts. Putting notes next to any foods that are vegan, or that have nuts, would be a great idea.

Capture the Memories

1. Decide what style of photographs you are wanting. Are you leaning towards traditional, staged photos? Or maybe more candid shots where the subject doesn't realize they're being photographed? Either way, talk with your photographer and make sure you are both on the same style page.

2. Decide on what level of service you want. Do you want photos of the ceremony only, or are you pining for the whole package?

3. Budget is BIG! Knowing how much you can afford to spend will allow you to discard any photographers who are out of your price range.

4. Decide how to use your pictures. Do you want enough professional pictures for the entire family, or just an album for you and your new husband?

5. ALWAYS CONFIRM, CONFIRM, CONFIRM! Once you have chosen your photographer, make sure you are penciled in on their calendar! Confirm at least 2-3 months ahead of the wedding, and again 1-2 weeks before, just to iron out the last-minute details.

6. If your photographer is staying for the whole reception, please feed them! And make sure they are seated close to the bride and groom's table so he or she can capture all the loving moments.

Deals and steals are abound at these great sponsors!

**New Spring 2014
Bridal Gowns Are Here Now!
Prom Dresses Arriving Daily!**

**We Also Have A Large
Selection Of:**
Bridal Accessories • Shoes
New Bridesmaid Dresses In Store

Like Us on Facebook

Schoen's Bridal World

818 N. Morgan • Downs, KS • 785-454-6292
Mon-Sat. 9:00 am to 5:00 pm



**See us for your
Prom &
Wedding needs!**

**Prom nails by Crystal: Acrylic: \$25 • Shellac: \$10
Tanning: 10 sessions: \$45 • Month: \$65
Upsdos by Janna, Sara or Tiffany: \$45**

Call for your appointment today! (785) 890-4247

Beauty for Life

1006 Main, Goodland, KS
www.vagaro.com/beautyforlife

Get ready for your closeup!

**Let us make sure you look
picture-perfect for your
prom or wedding day!**

We have 7 stylists
to pamper you

*Appointments are limited,
so call now to book yours!*

Carousel

1175 S. Range Ave. | Colby, KS 67701 | (785) 460-2651

Introducing
Chauntell Peter
& her air-brush
makeup



WE'RE HERE FOR YOU!

- Tuxedo rentals • Formal wear
- Wedding & event planning
- Table & chair linen
- Video • DJ services

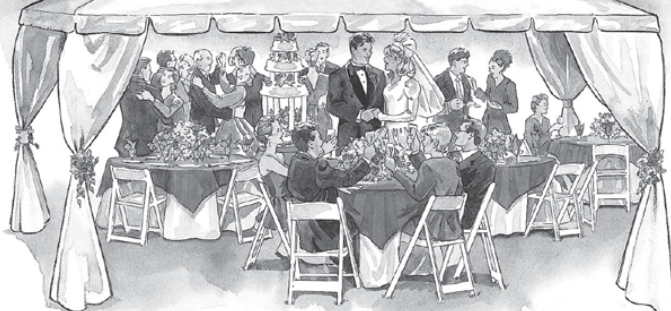
**Nora's
Photography**

1502 Main, Goodland • Ph: (785) 899-0060

Sunshine or Starlight

**RENT A GREAT BIG
PARTY**

WWW.GRANDRENTALHAYS.COM



Why buy when you can rent?

- Tents
- Tables & Chairs
- Table Linens & Skirting
- Champagne & Chocolate Fountains
- Champagne & Wine Glasses
- Frozen Drink Machines
- Arches
- China
- Colonnades
- Candelabras
- Dance Floor
- Delivery & Set Up Available

**GRAND
RENTAL
STATION**

1505 Vine St., Hays, KS
785-625-7391 or 800-494-6912
Western Kansas'
Most Complete Party Rental

**Set the tone for your wedding
with custom invitations that
reflect your personal style.**

Rehearsal Dinner Invitations
Bridal Shower Invitations
Save the Date Cards
Wedding Invitations
Wedding Programs

**LEROY'S
PRINTING**
Est. 1964

560 N. Franklin, Downtown Colby
(785) 460-2211 (800) 244-9447 www.leroysprinting.com



**ARE YOU READY FOR
YOUR CLOSEUP?**

**Picture perfect skin is only a
consultation away!**

*Reveal vibrant, youthful skin with
NeriumAD by reducing:*

Fine lines & wrinkles, Discoloration,
Uneven skin texture, Enlarged pores



Call today or see me at the

Colby Home & Garden Show - March 21, 22 & 23
Mary Mitchell (785) 443-1458
www.mitch2014.theneriumlook.com



**CHECK OUT OUR BRAND NEW
PRICING ON WEDDING PACKAGES**

We customize to
fit your needs

*Call to book your
appointment*

keesa*
photography

640 N. Franklin, Colby KS
(785) 462-5039



kansas classifieds

Help Wanted
Can You Dig It? Bulldozers, Backhoes, and Excavators. 3 Week Hands On Training Provided. Become Nationally Certified. Lifetime Job Placement Assistance. GI Bill Eligible! 1-866-362-6497

Help Wanted
"Partners In Excellence" OTR Drivers APU Equipped Pre-Pass EZ-pass passenger policy. 2012 & Newer equipment. 100% NO touch.

Butler Transport 1-800-528-7825 www.butlertransport.com

Help Wanted/Truck Driver
Drivers - CDL-A. Train and work for us! Professional, focused CDL training available. Choose Company Driver, Owner Operator, Lease Operator or Lease Trainer. (877) 369-7885 www.CentralTruckDrivingJobs.com

Help Wanted/Truck Driver

Drivers: Need Contract Drivers, CDL A or B to transfer commercial vehicles from local body plants to various locations throughout U.S. --OTR -No forced dispatch -Drivers choice- Apply online at www.mamotransportation.com under Careers or call 1-800-501-3783 to speak with a recruiter.

Help Wanted/Truck Driver
Exp. Flatbed Drivers: Regional opportunities now

open with plenty of freight & great pay! 800-277-0212 or driveforprime.com

Help Wanted/Truck Driver
Great Plains Trucking, a subsidiary of privately owned Great Plains Manufacturing of Salina, KS is looking for experienced drivers or driving school graduates to deliver product to our dealer network. We offer excellent compensation, benefits and home time. Please contact

Brett at brettw@gptrucking.com or 785-823-2261

Help Wanted/Truck Driver
Local & OTR Company, Class A CDL, Health Insurance, Dental/Vision, Pd Vacation & Company matched 401K. Safety/Performance Incentives. Call Monson and Sons @ 1-800-463-4097 ext 109 or ext 110. EOE.

Misc. For Sale
WORLD'S LARGEST GUN

SHOW - April 5 & 6 - Tulsa, OK Fairgrounds. Saturday 8-6, Sunday 8-4. WANENMACHER PRODUCTIONS. Free appraisals. Bring your guns! www.TulsaArmsShow.com

Misc. For Sale
Your Land is Your Down Payment. And we'll match your tax refund up to \$8,000. Singles starting at \$39,900. Doubles starting at \$59,900. Less than perfect credit OK! 866-858-6862

NOTICE: Roofer Registration

Beginning July 1, 2013, roofing contractors operating in the State of Kansas are required by law to register with the Kansas Attorney General's Office.

To register, or to view a list of registered roofing contractors, visit the Attorney General's website at www.InYourCornerKansas.org.



Kansas Attorney General
Derek Schmidt
1-800-432-2310

Not paid for at taxpayers' expense.

March SUPER SALE

QSI

Quality Structures, Inc.
www.qualitystructures.com
800-374-6988

Specializing in Complete Post Frame Buildings.

Take **ADVANTAGE** of our **LOWEST PRICES OF THE YEAR!** THROUGH MARCH 31st

<p>QUALITY</p> <ul style="list-style-type: none"> 3-Ply Laminated Columns #2 and Better Framing Lumber All Steel Entry and Garage Doors Rust Resistant Painted Steel Exterior Screw Application on Exterior Steel 	<p>DURABILITY</p> <ul style="list-style-type: none"> 60 yr. Column Warranty 40 yr. Steel Warranty 10 yr. Entry & Garage Door Warranty 5 yr. Workmanship Warranty Builders Risk Policy 	<p>STRENGTH</p> <ul style="list-style-type: none"> 60 Mph Wind Load 30 Lb P.S.F. Truss Load Roof And Wall Wind Bracing Trusses Designed for Ceiling Load Engineered to meet or exceed local code
---	---	--

FULLY INSURED Experience the QSI Advantage **FREE ESTIMATES**

Your hometown. Their future.



Imagine the possibilities for your community if everyone designated **just 5%** of their estates to hometown needs.

With the help of community foundations, we can create permanent sources of funding for local charities, schools, churches, parks, and so much more!

KEEP 5 IN KANSAS

A little planning. A big impact.

Learn more at
keepfiveinkansas.com

Get the latest *Star-News* on your electronic devices

The

Goodland Star-News

1205 Main Avenue, Goodland, KS 67735 • Phone (785) 899-2338

WEEKEND
Friday, August 16, 2013

\$1

Volume 81, Number 66

8 Pages

Goodland, Kansas 67735

weather report

64°
9 a.m.
Thursday

Today
• Sunset, 7:40 p.m.

Saturday
• Sunrise, 6:02 a.m.
• Sunset, 7:39 p.m.

Midday Conditions

- Soil temperature 69 degrees
- Humidity 70 percent
- Sky partly cloudy
- Winds southeast 7 mph
- Barometer 30.15 inches and falling
- Record High today 105° (1983)
- Record Low today 51° (1978)

Last 24 Hours*

High Wednesday	80°
Low Wednesday	59°
Precipitation	0.13
This month	0.79



Shot fired near police on Sunday

Early Sunday morning, the Goodland Police Department took a man into custody after he had fired a shot near several officers.

In a release Monday, the department said that at 4 a.m. Sunday, officers responded to a call for service at a home on Sycamore Street in reference to a man who was very intoxicated and had become emotionally distraught.

The man locked himself in an upstairs room and while officers were attempting to address the situation the man discharged a firearm into the floor of the room. The bullet traveled through the upstairs floor and into the wall of a downstairs room about 15 feet from where officers were standing.

Additional officers arrived on

Online access to The Goodland Star-News faster than Postal Service

We want *Star-News* customers to know we continue to depend on the United States Postal Service for delivery to most of our customers, but we have an alternate and more timely way customers can receive and read *The Goodland Star-News* on a regular basis.

We have joined with **MediaPass** to allow customers access to the editions of the *Star-News* through our web page, and with one download

customers have all the pages of each edition shortly after they are printed on Tuesday and Friday of each week.

You can use your personal computer, a tablet, laptop or even a smart phone to keep yourself up-to-date on the happenings around town.

For those currently receiving the *Star-News* in the mail we offer a free trial to access the online newspaper editions.

Signing up online through the

MediaPass system allows a customer to purchase a three month, six month or one year subscription.

For the free online trial contact Sheila Smith at the *Star-News* office (785) 899-2338 or by email to star.news@nwkansas.com.



The Goodland Star-News

1205 Main St., Goodland, Kan., 67735 • Phone (785) 899-2338

kansas classifieds

Adoption
ANSWER OUR PRAYERS!
Loving married couple wishes
to adopt newborn into a home
filled with happiness, security
and love. Call for more info
1-800-492-2011.

For Sale
Kansas Bull Test's

Performance Tested Bull Sale
April 2 - 12:30 PM - Beloit,
Kansas Selling 100 bulls & 15
heifers Brian Hagedorn: 785-
458-2137 KansasBulls@gmail.

Help Wanted
Anthony, Kansas is seeking

Water/Wastewater Operator.
High School Diploma/GED
and valid driver's license
required. Applications and
complete job description:
www.anthonykansas.org.
620-842-5434. EOE. Open
until filled.

The Goodland Star News Service Directory

NEW HOURS
MARCH 1

Open daily
8 am - 4 pm (MT)

CLARK Crossing Co.
Books • Coffee • Art

NIGHTS AT CLARK:
Fridays & Saturdays
7 pm - 11 pm

SW Corner of 10th & Clark, Goodland, (785) 262- 9517

Newbanks Pumps, Inc.
We sell the best and service the rest!
Water Well Drilling & Service
~ Irrigation wells ~ Domestic wells
~ Stock wells ~ Solar Systems
Curt Goble, Owner
Ph: (785) 899-6302 ~ Email: newbankspumps@gmail.com
CO #841 • KS #856 • Elec. Cont. #6127

TRANE
It's Hard To Stop A Trane

Don't touch that dial!

Now's the time to tune-up
the heating and air
conditioning. Pick up
the phone and call
us for comfort-enhancing,
money-saving heating and
air conditioning services.

Bowman's
Heating / Air
Conditioning

Call today!
(785) 899-5770
577 W. 31st, Goodland, KS

NEW SYSTEM
PROFESSIONAL
WINDOW CLEANING

Serving Northwest Kansas
& Northeastern Colorado
since 1992!

(785) 462-6995 OR (800) 611-6735
egriffith@st-tel.net

www.mywindowcleaner.net

Eldean and Janet Griffith • PO Box 692, Colby, KS

NEBRASKALAND
KANSASLAND
COLORADOLAND
TIRE GROUP

GOODYEAR

KANSASLAND TIRE
Willie Weems
Store Manager
24-hour Service

1402 Main
Goodland, KS 67735
www.thetirestore.com

785.899.3689
Fax: 785.899.2131
Toll Free: 800.281.3689

Tire and Auto Service Professionals

The Decorating Co.

Interior Design Consultants
Irene Smith &
Rochelle Kling

There's no limit to our imagination.

106 E. 11th, Goodland, KS 67735
(785) 890-5441
E-mail: decorco@st-tel.net

Celebrating 40 years in business!

Hot Brush
Michael S. Boyson

BANNERS - LETTERING - PINSTRIPES - ART

Award winning Quality signs since 1974
204 W. 4th Bird City, Kansas
785-734-2423

WANTED: DIRTY CARPET
IF YOU HAVE DIRTY CARPET, WE CAN STEAM CLEAN IT.
NO JOB TOO BIG OR TOO SMALL!

• Commercial/Residential
• Advanced Truck Mounted Steam Cleaning Equipment
• Water Damage Restoration
• FREE ESTIMATES

PRO FLOOR CARE
Carpet & Upholstery Cleaning
(785) 462-8313 or (800) 473-4138

Cleaning NW Kansas
one house at
a time!

Guaranteed
Ultra
Cleaning
Power

MARCH SPECIALS

St. Patrick's Day drawing:
\$25 minimum purchase
\$20 Member minimum purchase

• **Storewide St. Patricks Day sale:**
10% off! (Members will receive
additional 10% off 1 item.)

• Come in on St. Patrick's Day wearing green and
receive a free gift with purchase!
• 10% off 1 item over \$10 for MMJ Card
• 15% off for all active duty/retired military

• **March 28, 29, 30:**
LG water pipes with perk on sale
All Hookas in stock on sale

G&G Freds' Tobacco, Pipes & Accessories
All pipes & accessories intended
for tobacco use.

415 14th, Burlington, CO • Beginning Dec. 26 Open 9 AM-7 PM
Phone: (719) 212-7048 or (719) 342-0503 (after hrs)

LASERS BY TALIA
LOOK BETTER, FEEL BETTER

• **Laser Hair Removal**
• **Ultrasonic Slimming**
• **Teeth Whitening**

MON. & WED. NOON - 6 P.M.
TUES., THURS. & FRI.
8 A.M. - 5 P.M.

APPOINTMENTS ALSO
AVAILABLE AFTER HOURS

1580 ROSE AVE. • BURLINGTON, CO
719-346-4640

Goodland Home Health, LLC
Sue McCracken, RN
655-B E. 22nd, Goodland, KS
Office: (785) 890-7658 • Cell: (785) 821-0050
*We provide the best care for those individuals due to illness
who are unable to care for themselves or their loved ones.*

"Seek Shelter Today!"
LIFE • HOME • CAR • FARM • BUSINESS

SHELTER INSURANCE

Jim Alcorn, Agent
1624 S. Main Street
Goodland, KS 67735-0727
Business: (785) 899-2553
www.shelterinsurance.com

Windy Plains Bike Shop

Professional bicycle repairs since 1978!
Parts, accessories and service for all makes.
Pick up and delivery available in Goodland!

TIRED OF FLATS?
ASK ABOUT OUR NO FLAT GUARANTEE!

Harold Sneath
6085 Rd. 17
(785) 899-4786 • (785) 899-5858 (home)
Same day service on most out of town repairs!

Culligan
better water. pure and simple.®

• Drinking Systems • Water Softeners (Sales & Rentals)
• Water Coolers • Salt Sales & Delivery

Scheopner's Water Conditioning, Inc.
Goodland & Colby, KS • Toll free: (800) 536-2352

Sealy **Mohave** **Ashley Furniture** **MED** **IFT**

Superior
Flooring and Furniture and Accessories

360 14th St., Burlington, CO ~ PHONE: (719) 346-7579
Dan and Myrna Troyer

Your ad could be here!

Call The Goodland Star-News
today to find out how!
(785) 899-2338

ODDS & ENDS SALE
Come look at all that's on sale!
~ 25% off selected items ~ Used tools for sale
~ Lots of used storm windows
~ Something for everyone!

PJ'S HOME CENTER
1630 Sandy Road (1/2 miles north of I-70 Exit 19, west side of road)
Goodland, KS • PHONE: (785) 899-6241

PLUM CREEK LTD
Downtown Colby • 785-460-1978

Men's Suits & Casual Wear
Missy & Women's Dress & Casual Clothing
Tuxedos by Jim's Formal Wear - Bridal Registry

*Let us make your wedding &
prom tux picture perfect!*

LUCK OF THE DRAW!

• **1-5**=Dollar amount off
• **6-10**= 15% off • **Face card**=\$13 haircut

Draw for your savings until March 31, 2014!
Amazing Hair & Nails
Melody Knudson: Owner/Operator
Lisa Roberson & Amber Barrie: Hair Extraordinaires
1016 W. Highway 24, Suite #2, Goodland • Ph: (785) 890-4440

DAN BRENNER FORD, INC.
2003 PRESIDENT'S AWARD
Ford
2005 PRESIDENT'S AWARD

"Where Service is an Affair of the Heart"

222 W. HWY. 24, I-70 BUSINESS LOOP, GOODLAND, KS
(Toll Free) 800-636-8770
(Business) 785-899-2316 (Fax) 785-899-2317

AMERICAN BUILDINGS
A NUCOR COMPANY

ERIC RICHARDSON CONSTRUCTION INC.
48515 SNEAD DRIVE, BURLINGTON CO 80807

SERVING EASTERN COLORADO AND WESTERN KANSAS
OWNER: ERIC RICHARDSON
CALL FOR PRICING: 719-346-8230
SALES: MIKE RUHS

Langer Industrial Service

2022 County Road 11 • Levant, KS 67743 • 785-586-2208
Monday - Friday 8 a.m. - 5 p.m.

We pay cash up to for all scrap metal*
Brass • Copper • Aluminum • Batteries • Electric motors • Cars
• Combines • Farm Equipment • Prepared/Unprepared Iron and Tin
• Container Service • Off site baling and car crushing
• Limited pickup service available
*chedule deliveries after normal business hours by appointment when necessary
* Some Conditions Apply

BURLINGTON FAMILY DENTISTRY

Justin Evanson
DDS, MD
Oral Surgeon

Jason Ehtessabian
DDS, FAGD, PC
Fellow of the
Academy of General Dentistry

Dr. Justin Evanson **Dr. E**

**IV Sedation, Wisdom teeth removal,
Implant placement, and Exceptional Comprehensive
Dental Care for the Entire Family!**

(719) 346-8266 340 14th St.
Burlington, CO
www.burlingtonfamilydentistry.net

All Central Time, for Kansas Mountain Time Stations subtract an hour

Tuesday Evening												March 25, 2014											
		7:00	7:30	8:00	8:30	9:00	9:30	10:00	10:30	11:00	11:30												
ABC	S.H.I.E.L.D.			Goldbergs	Trophy	Mind Games		Local	Jimmy Kimmel Live	Nightline		ABC	S.H.I.E.L.D.			Goldbergs	Trophy	Mind Games		Local	Jimmy Kimmel Live	Nightline	
CBS	NCIS			NCIS: Los Angeles		Person of Interest		Local	Late Show Letterman	Ferguson		CBS	NCIS			NCIS: Los Angeles		Person of Interest		Local	Late Show Letterman	Ferguson	
NBC	The Voice			About-Boy	Fisher	Chicago Fire		Local	Tonight Show	Meyers		NBC	The Voice			About-Boy	Fisher	Chicago Fire		Local	Tonight Show	Meyers	
FOX	Glee			New Girl	Brooklyn	Local						FOX	Glee			New Girl	Brooklyn	Local					
Cable Channels																							
A & E	Storage	Storage		Barry'd	Storage	Storage	Storage	Storage	Storage Wars		Local	A & E	Storage	Storage		Barry'd	Storage	Storage	Storage	Storage Wars		Local	
AMC	Rocky IV			Game of Arms		Game of Arms		Game of Arms		Blood Dia		AMC	Rocky IV			Game of Arms		Game of Arms		Blood Dia			
ANIM	Monkeys			Raised Wild		Raised Wild		Monkeys		Raised	Local	ANIM	Monkeys			Raised Wild		Raised Wild		Monkeys		Raised	Local
BET	Friday	The Game		The Game	Together	The Game	Together	Wendy Williams Show		Marriage	Local	BET	Friday	The Game		The Game	Together	The Game	Together	Wendy Williams Show		Marriage	Local
BRAVO	Housewives/NYC			Housewives/NYC		Dating Rituals		Happens	Housewives/NYC	Atlanta		BRAVO	Housewives/NYC			Housewives/NYC		Dating Rituals		Happens	Housewives/NYC	Atlanta	
CMT	Local	Local		The Dukes of Hazzard		The Dukes of Hazzard		Ron White: Salute Troops		Ron White		CMT	Local	Local		The Dukes of Hazzard		The Dukes of Hazzard		Ron White: Salute Troops		Ron White	
CNN	Piers Morgan Live			CNN Special Report		E. B. OutFront		Piers Morgan Live		Report	Local	CNN	Piers Morgan Live			CNN Special Report		E. B. OutFront		Piers Morgan Live		Report	Local
COMEDY	Tosh.0	Tosh.0		Tosh.0	Kroll	Daily	Colbert	At Midnig	Tosh.0	Daily	Local	COMEDY	Tosh.0	Tosh.0		Tosh.0	Kroll	Daily	Colbert	At Midnig	Tosh.0	Daily	Local
DISC	Local	Local		Amish Mafia		Amish Mafia		Amish Mafia		Clash of the Ozarks		DISC	Local	Local		Amish Mafia		Amish Mafia		Amish Mafia		Clash of the Ozarks	
DISN	Local	Local		Dog	Jessie	Cloud 9				Jessie	Win, Lose	DISN	Local	Local		Dog	Jessie	Cloud 9				Jessie	Win, Lose
E!	E! News	The Soup		Total Divas		Total Divas		Chelsea	E! News	Chelsea		E!	E! News	The Soup		Total Divas		Total Divas		Chelsea	E! News	Chelsea	
ESPN	College Basketball					SportsCenter		SportsCenter		SportCtr	Local	ESPN	College Basketball					SportsCenter		SportsCenter		SportCtr	Local
ESPN2	Update	Wm. Basketball				Olberrmann			Baseball	NBA	Local	ESPN2	Update	Wm. Basketball				Olberrmann			Baseball	NBA	Local
FAM	Twisted			Pretty Little Liars		The 700 Club		Abduction		Chopped		FAM	Twisted			Pretty Little Liars		The 700 Club		Abduction		Chopped	
FOOD	Local	Local		Chopped		Chopped		Chopped		Chopped		FOOD	Local	Local		Chopped		Chopped		Chopped		Chopped	
FX	Real Steel					Justified		Justified		Justified		FX	Real Steel					Justified		Justified		Justified	
HGTV	Hawaii	Hawaii		Beach	Beach	Hunters	Hunt Intl	Flip It to Win It		Beach	Beach	HGTV	Hawaii	Hawaii		Beach	Beach	Hunters	Hunt Intl	Flip It to Win It		Beach	Beach
AmericanProfile												// CELEBRATING THE AMERICAN SPIRIT //											
HIST	Cnt. Cars	Cnt. Cars		American	American	American	American	Cnt. Cars	Counting Cars		Local	HIST	Cnt. Cars	Cnt. Cars		American	American	American	American	Cnt. Cars	Counting Cars		Local
LIFE	Dance Moms			Kim of Queens		Kim of Queens		Dance Moms			Local	LIFE	Dance Moms			Kim of Queens		Kim of Queens		Dance Moms			Local
MTV	Teen Mom 2			Teen Mom 2		Are You the One?		Are You the One?		Teen Mom	Local	MTV	Teen Mom 2			Teen Mom 2		Are You the One?		Are You the One?		Teen Mom	Local
NICK	Local	Local		SpongeBot	Sam & Cat	Full H'se	Full H'se	Full H'se	Full H'se	Full H'se	Local	NICK	Local	Local		SpongeBot	Sam & Cat	Full H'se	Full H'se	Full H'se	Full H'se	Full H'se	Local
SCI	Face Off			Jim Henson's		Face Off		Jim Henson's		Gargoyles	Local	SCI	Face Off			Jim Henson's		Face Off		Jim Henson's		Gargoyles	Local
SPIKE	Ink Master			Ink Master		Tattoo	Tattoo	Tattoo	Tattoo	Ink Maste	Local	SPIKE	Ink Master			Ink Master		Tattoo	Tattoo	Tattoo	Tattoo	Ink Maste	Local
TBS	Big Bang	Big Bang		Cougar	Big Bang	Conan		Holmes	Conan		Local	TBS	Big Bang	Big Bang		Cougar	Big Bang	Conan		Holmes	Conan		Local
TCM	Carson	Cross-Lorraine				Black Hand				3 Musktrs	Local	TCM	Carson	Cross-Lorraine				Black Hand				3 Musktrs	Local
TLC	Local	Local		Little People, World		Little People, World		Little People, World		The Little Couple		TLC	Local	Local		Little People, World		Little People, World		Little People, World		The Little Couple	
TNT	NBA Basketball			NBA Basketball				In NBA		Local		TNT	NBA Basketball			NBA Basketball				In NBA		Local	
TOON	King/Hill	Cleveland		Amer. Dad	Amer. Dad	Family Guy		Chicken	Boondocks	Squid	Local	TOON	King/Hill	Cleveland		Amer. Dad	Amer. Dad	Family Guy		Chicken	Boondocks	Squid	Local
TRAV	Andrew Zimmern's			Bizarre Foods		Bizarre World		Andrew Zimmern's		Bizarre	Local	TRAV	Andrew Zimmern's			Bizarre Foods		Bizarre World		Andrew Zimmern's		Bizarre	Local
TV LAND	Raymond	Raymond		Raymond	Raymond	The King of Queens		King		Local		TV LAND	Raymond	Raymond		Raymond	Raymond	The King of Queens		King		Local	
USA	Mod Fam	Mod Fam		Chrisley	Chrisley	Mod Fam	Mod Fam	Law-SVU		Local		USA	Mod Fam	Mod Fam		Chrisley	Chrisley	Mod Fam	Mod Fam	Law-SVU		Local	
VH1	All About Benj.			Fabulous Life		Basketball Wives LA		Single Ladies		Hip Hop	Local	VH1	All About Benj.			Fabulous Life		Basketball Wives LA		Single Ladies		Hip Hop	Local
WGN	The Matrix							Salem	How I Met	Parks	Local	WGN	The Matrix							Salem	How I Met	Parks	Local
Premium Channels																							
HBO	Local	Local		Real Time	Dark Shadows			Girls		REAL Sports Gumbel		HBO	Local	Local		Real Time	Dark Shadows			Girls		REAL Sports Gumbel	
MAX	Local	Local		Beautiful Creatures		Ocean's Twelve				Pitch Perfect		MAX	Local	Local		Beautiful Creatures		Ocean's Twelve				Pitch Perfect	
SHOW	Local	Local		Other Shore		The Impossible				Lies	Comedy	SHOW	Local	Local		Other Shore		The Impossible				Lies	Comedy

©2009 Hometown Content, listings by Zap2it

Wednesday Evening										March 26, 2014					
	7:00	7:30	8:00	8:30	9:00	9:30	10:00	10:30	11:00	11:30					
ABC	Middle	Suburg.	Mod Fam	Mixology	Nashville		Local	Jimmy Kimmel Live	Nightline						
CBS	Survivor		Criminal Minds		CSI: Crime Scene		Local	Late Show Letterman	Ferguson						
NBC	South Pole Heroes		Law & Order: SVU		Chicago PD		Local	Tonight Show	Meyers						
FOX	American Idol				Local										
Cable Channels															
A & E	Duck D.	Duck D.	Duck Dynasty		Wahlburgr	Wahlburgr	Duck D.	Duck Dynasty		Local					
AMC	Jaws				Jaws 2					Local					
ANIM	Mermaids-Body		Mermaids: New		Mermaids-Body				Mermaids	Local					
BET	Being Mary Jane			TBA	The Game	The Game	Wendy Williams Show		We Party	Local					
BRAVO	Real Housewives		Housewives/Atl.		Flipping Out		Happens	Flipping Out		Real					
CMT	Local	Local	Reba	Reba	The Dukes of Hazzard		Mrs. Doubtfire								
CNN	Piers Morgan Live		Death Row Stories		E. B. OutFront		Piers Morgan Live		Death Row	Local					
COMEDY	South Pk	South Pk	Work.	Broad Cit	Daily	Colbert	At Midnig	Work.	Daily	Local					
DISC	Local	Local	Naked and Afraid		Naked and Afraid		Survivorman & Son		Ice Cold Gold						
DISN	Local	Local	Dog	Jessie	16 Wishes			Dog	Liv-Mad.	ANT Farm					
E!	The Soup	RichKids	Total Divas		The Soup	The Soup	Chelsea	E! News		Chelsea					
ESPN	NBA Basketball			NBA Basketball					SportCtr	Local					
ESPN2	College Basketball				SportsCenter		Olbermann		Tennis	Local					
FAM	Three Men and a Baby				The 700 Club		Daddy	Daddy	Melissa	Local					
FOOD	Local	Local	Restaurant: Im.		Save My Bakery		Restaurant: Im.		Restaurant: Im.						
FX	Iron Man 2				The Americans			The Americans		Americans					
HGTV	Property Brothers		Property Brothers		Hunters	Hunt Intl	Property Brothers		Property Brothers						
HIST	American Pickers		American Pickers		Vikings		American Pickers			Local					
LIFE	Preachers' Daughters		Bring It!		Bring It!		Preachers' Daughters			Local					
MTV	Teen Mom 2		The Real World		The Real World		Teen Mom 2		Real Wrld	Local					
NICK	Local	Local	SpongeBot	Sam & Cat	Full H'se	Full H'se	Full H'se	Full H'se	Full H'se	Full H'se					
SCI	Pirates-Worlds							Lost City Raiders		Local					
SPIKE	The Expendables			Rambo				Next of Kin		Local					
TBS	Big Bang	Big Bang	Big Bang	Deal With	Conan		Holmes	Conan		Local					
TCM	Little Women			Meet Me in St. Louis				Red Dust		Local					
TLC	Local	Local	The Little Couple		My 600-Lb. Life		Hoard-Buried		Girl- Half- Face						
TNT	Castle		Castle		Dallas		The Mentalist			Local					
TOON	King/Hill	Cleveland	Amer. Dad	Amer. Dad	Fam. Guy	Fam. Guy	Chicken	Boondocks	Squid	Local					
TRAV	Toy Hntr	Backroad	Extreme Bunkers		Food Paradise		Toy Hntr	Backroad	Bunkers	Local					
TV LAND	Raymond	Raymond	Cleveland	Soul Man	Cleveland	Soul Man	King	King	Cleveland	Local					
USA	Psych		Psych After Pshow		Chrisley	Mod Fam	Psych			Local					
VH1	Fabulous Life		Fabulous Life		You Got Served				Fab. Life	Local					
WGN	Parks	Parks	Parks	Parks	Parks	Parks	Rules	Rules	Rules	Rules					
Premium Channels															
HBO	Local	Local	The Great Gatsby					Girls	Doll & Em	Doll & Em					
MAX	Local	Local	Original Gangstas		Life of Pi				The Conjuring						
SHOW	Local	Local	Some Girl(s)		Shameless		Lies	Quartet							

CARD OF THANKS

Thank you for the lovely cards and flowers for my 85th birthday. They were greatly appreciated. It's real nice to have friends. Love to all. -Audrey Finley. -3-21-3-25-

LOST AND FOUND

FOUND: pair of prescription eyeglasses, found at the skate park in Goodland. They are at the Goodland Star-News office. Please stop in if these are yours. -3-21-3-25-

WANTED

Want to buy: John Deere diesel engines, running or not. Call (785) 263-6275. -11-29-3-29-

Junk batteries, non-ferrous metals and iron. Darrel Bowen. Phone 785-899-2578. -tfn-

NOTICE

BURLINGTON GUN & COIN SHOW. Burlington, CO. Friday and Saturday, April 11-12, 2014, Burlington Community Center, 340 S. 14th Street. Friday from 9 a.m. to 5 p.m. MT and Saturday from 9 a.m. to 4 p.m. MT. Admission \$3 adults, 12 & under free with adult supervision. For more information please call (719) 346-7623. -3-25-4-4-

American Profile Cookbooks Available! Stop by The Goodland Star-News. -tfn-

Advertising Deadlines (box and line ads): Tuesday edition (Friday at noon). Friday edition (Wednesday at noon). Please check your ad the first time it runs. If you find an error, please call us at (785) 899-2338 so it can be corrected, since we will not be responsible for errors after that first day. Thank you! The Goodland Star-News.

HELP WANTED

Accepting applications for Bagger/Warehouseman for agriculture business.

Experience in grain elevator helpful. For interview call Sunrise Staffing Services, LLC @ (785) 628-6877 apply online at sunrisestaffingservices.com or pick up application at the SunOpta Plant, 1701 Industrial Loop, Goodland. -3-25-4-4-

Full-time IT consultant to work with IT director to provide services to contracted business and home customers via remote assistance tools, and computer repair in shop and at customer location. Must have a passion for IT technology and be willing to expand knowledge and skills. Must be a self-starter, detail-oriented, have good work ethic, strong customer service skills, be comfortable working with people at their location and take direction from supervisors and customers when needed. Working knowledge and understanding of Windows hardware and software necessary; understanding of networks and network domains functionality helpful. Some day travel necessary, must reside in NW Kansas area or be willing to relocate. Job offers full-time benefits including health insurance, 401K, AFLAC, plus. EOE. Send resume to: support@nortonks.com. (785) 874-4844. -3-21-3-25-

Several open positions. Please apply in person at Motel 6 in Goodland. -3-21-4-8-

Help Wanted: Administrative Assistant. Sherman County Health Department has an opening for an administrative assistant. Applicant must have good interpersonal and teamwork skills, have strong organizational skills, be proficient with Microsoft Office and QuickBooks and have the ability to multi-task in a busy office environment. Bilingual, helpful but not mandatory. Job Description and Application can be downloaded off the Sherman County Health Department Webpage or may

be picked up at the Health Department, 1622 Broadway. Application open through March 28, 2014. -3-21-3-28-

Sherman County Treasurer's Office is taking applications for a full-time clerk. The applicant needs to enjoy working with the public and will be required to have excellent communication skills. Most of the daily work is completed on the computer, excellent computer skills are a must. High school diploma or GED is required; general business training with experience is preferred. Wage will be based on experience. Applications can be picked up at the Sherman County Treasurer's Office. The position will remain open until filled. Sherman County is an EEO employer. -3-14-3-25-

CROP PRODUCTION SERVICES in Goodland, KS is currently accepting applications for a Truck Driver. Must have a Class A, CDL and a Hazmat endorsement or be able to obtain one. Pre-employment background check and drug screening required. All positions offer competitive wages with a 401K and benefits. Applications may be picked up in person at the office located at 1620 S. Highway 27, Goodland, KS. Phone: (785) 8995601. Inquire with Dan at (785) 821-6247 or JB at (785) 821-0236. EOE. -3-14-3-25-

CROP PRODUCTION SERVICES in Goodland, KS is currently accepting applications for a full-time Spray Rig Operator. Must have a Class A CDL and a Hazmat Endorsement or be able to obtain one. Pre-employment background check and drug screening required. All positions offer competitive wages with a 401K and benefits. Applications may be picked up in person at the office located at 1620 S. Highway 27 in Goodland, KS. Phone: (785) 899-5601.

Inquire with Dan at (785) 821-6247 or JB at (785) 821-0236. EOE. -3-14-3-25-

The team at Kansas Tire of Norton has an immediate opening for a service truck operator/general service person. Must have a valid driver's license. Competitive wages, 401k, insurance and uniforms. Experience preferred, but not necessary, we will train. Please stop by 11101 Rd. E1, Norton, and pick up an application or call (785) 877-5181. EOE. -2-14-tfn NORTON-

PSI Transport is always looking for good company livestock and grain haulers as well as shop mechanics. Competitive pay, life/health/dental benefits and bonus program available. EOE. (785) 675-3477. -6-10-TFN

FOR SALE

Round cane bales, 1,500 lbs. Good protein, low nitrate. Round millett bales, 1,500 lbs. Good protein, low nitrate. NW Sherman County. Call (785) 399-2498. -3-21-4-8-

GOODLAND HOME FOR SALE: 102 Circle Drive. 4 bedroom, 2.5 bath, 2 car garage, corner lot. Call (308) 225-1027. -3-21-4-21-

La-Z-Boy luxury-lift power recliner. New, mauve color, used one month. Call (785) 672-4879. -3-18-3-28-

Aluminum printing plates, 23 5/8 x 30, never been inked. 50¢ each. Goodland Star-News. -1-24-tfn

1948 Philco Radio/Phonograph cabinet, good

PART-TIME OPENING



The City's Public Works and Parks Departments are looking to fill part-time seasonal positions. Interested individuals, at least 18 years of age, should either stop by the City Office to pick up an application or visit us online at www.cityofgoodland.org to fill out an application. The positions will be staffed throughout the 2014 summer season.

condition. Both radio and phono work. \$100.00. Call (719) 350-0705. -12-31-tfn-

2 Harley Davidson die cast models. 1-1:10 scale Hot Wheels HD Softail. 1-1:10 scale Maisto FLSTS Heritage Springer. Still in original boxes! Call Gary at (719) 350-0705. -9-24-tfn

AWP tool belt/pouches with kidney belt and suspenders. Paid \$100 plus, asking \$50. Call Gary at (719) 350-0705. -9-24-tfn

FIREWOOD FOR SALE in Goodland. Call (785) 890-7224 or (785) 821-2814. -12-11-tfn-

FOR RENT

3 bedroom, 1 bath house. Recently remodeled. References checked. Call (785) 821-3093. -3-21-4-1-

BUSINESS SPACE at 120 W. 11th St. in downtown Goodland. Weekdays call (785) 899-4631 or (785) 899-5687. -3-11-4-11-

Houses and apartments in Goodland. All sizes. Call for details. (785) 890-6538. -1-10-tfn-

Houses and apartments. Cole Real Estate. 785-899-



FARM CREDIT
OF WESTERN KANSAS
Financing ag. for generations.

Crop Insurance Professional

Farm Credit is accepting applications for a full time position as a crop insurance professional in an established agency. Position requires a minimum of one to five years of related administrative experience or related insurance environment. This person must be able to provide accurate complete policy documentation while maintaining a thorough understanding of crop insurance products. The successful applicant will have an understanding of agriculture production in Northwest Kansas and will display strong communication and computer skills. Salary to be determined based upon qualifications, with benefit package provided. To apply submit letter of application and resume to Farm Credit of Western Kansas, PO Box 667, Colby, KS 67701 attention Randy Wilson or email to randy.wilson@fcwk.com. Applications accepted until position is filled. EEO/AA/M/F/Veteran/Disability

2683. -tfn-

SERVICES

Almanza's Interior Services, Inc.. Drywall specialist. Drywall hanging, drywall finishing, texture and paint. Free estimates. References available. Spanish call (785) 332-5353. English call (785) 890-6223. -3-7-tfn-

Burlington-Goodland area. Residential overhead door service and repair, 20 years experience. Call Gary at (719) 350-0705. -7-12-tfn

CAT'S TNT for jewelry, vinyl graphic designs, massages, quilting and more! Stop by 1018 Main, Goodland - 3-23-tfn

Sponsored by

The Goodland Star-News

1205 Main
Goodland, Kan. 67735
899-2338

"Juniors"

D	E	N	I	M		B	A	S	T	E		J	E	B
E	R	I	K	A		A	S	H	E	N		E	R	E
J	A	N	E	R		R	U	S	S	E	L	L	I	E
A	S	A		O	M	I	T	S		I	D	L	E	R
C	A	J	U	N	S		D	I	R	T		Y	R	A
E	X	A	M	S		D	U	C	K	S		O	L	A
L	I	M	P			W	A	V	E	S		S	L	I
L	O	A				G	A	T	E	D		H	U	L
						S	M	I	L	E	D	A	T	
						C	A	T	S		H	I	N	T
P	R	A	D	A		Y	I	E	L	D		N	A	H
A	I	R				J	U	M	P	I	N	G	R	O
Y	O					O	S	C	A	R		U	T	T
A	T	M				B	E	A	D	S		N	E	E

Sponsored by

The Goodland Star-News

1205 Main
Goodland, Kan. 67735
899-2338

2	4	1	8	7	9	3	6	5
5	3	6	2	4	1	7	8	9
7	9	8	5	3	6	2	1	4
6	5	4	1	8	2	9	3	7
1	7	2	4	9	3	6	5	8
3	8	9	7	6	5	4	2	1
9	1	7	6	2	8	5	4	3
8	2	3	9	5	4	1	7	6
4	6	5	3	1	7	8	9	2

public notice

PUBLIC NOTICE

To: Crystal Ragels

Packrats Storage unit 18,

SEEKING FARM EQUIPMENT SERVICE TECHNICIANS (3)

Direct Hire. Located in McPherson (KS). Large AG Equipment Dealership seeking Combine, Tractor, and Forage Harvester Technicians with 1 or more year experience. Related Service/Repair certifications a plus. Must have own tools. Valid driver's license. \$17-20.00/hr DOE. Over time required. Generous commission/Bonus Email: dkuchta@oasisadvantage.com Ph:316.262.8222 Fax:316.262.8238 www.oasisstaffing.com EOE

ARE YOU LOOKING FOR AN EXCITING CAREER? JOIN THE CLEARY TEAM!!



NOW HIRING EXPERIENCED BUILDING CONSTRUCTION CREW AND FOREMAN

Cleary Building Corp. is seeking responsible, hard working, energetic personnel to lead and/or join our crew teams!! Must have a clean driving record and previous construction experience! **APPLY TODAY!!** www.workforclearybuildingcorp.com 990 S. Range Avenue Colby KS 67701 785-462-2023

1820 Cherry
Goodland, Ks. 67735
From: Packrats Storage

Your personal belongings in storage at Packrats Storage of Goodland, Kansas, will be

sold if restitution is not made by March 31, 2014.

Published in The Goodland Star-News, Tuesday, March 25, 2014.

POOL STAFF NEEDED



The City of Goodland is now accepting applications for Pool Staff for the 2014 Summer Season at Steever Water Park. Please stop by the City Office between 7:00am-4:00pm to obtain an application or go to our website: www.cityofgoodland.org.

RN/LPN charge nurse needed



Good Samaritan Society in Goodland, KS is now accepting applications for RN/LPN charge nurse. Applicant must be honest and reliable. Structured attendance policy is enforced. For more information please contact Shaunda Mann DNS at 785-890-7517 or apply online at good-sam.com.

NOW HIRING!



Front Desk Clerks; Cooks; Housekeeping; Servers; Maintenance

Flexible hours. Full and part-time positions available. Great benefits including insurance, vacation pay & 401K. Top pay. Certification bonus. Monthly bonus program. Employee discount at Penny's Diner, Excellent promotional opportunities, Dynamic training program. APPLY TODAY! 801 N. Highway 27. Front Desk Clerks/Van Drivers must have good driving record and be able to pass a drug test. (Junction of Hwy K-27 @ US-40) Sharon Springs, KS Phone: (785) 852-4664. (785) 852-4665-fax. sharonsprings@mail.oaktreeinn.com



Help Wanted

As United Plains Ag continues to grow, we have 2 full time positions available at Sharon Springs, KS.

Truck Drivers

Must have a class A CDL License with Hazmat Endorsement.

Apply at United Plains Ag or Contact

Jeff Kahle or Patrick Gibbs

at 785-852-4241 or e-mail to



EOE

jeff.kahle@chsinc.com
patrick.gibbs@chsinc.com

Join Our Team
Selling advertising for Nor'West Newspapers!

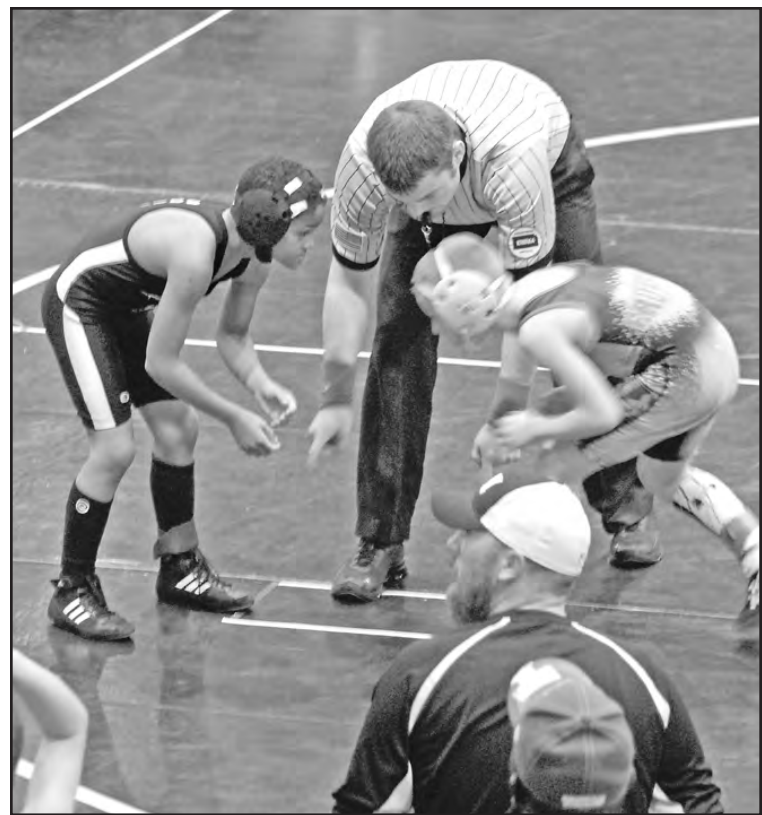
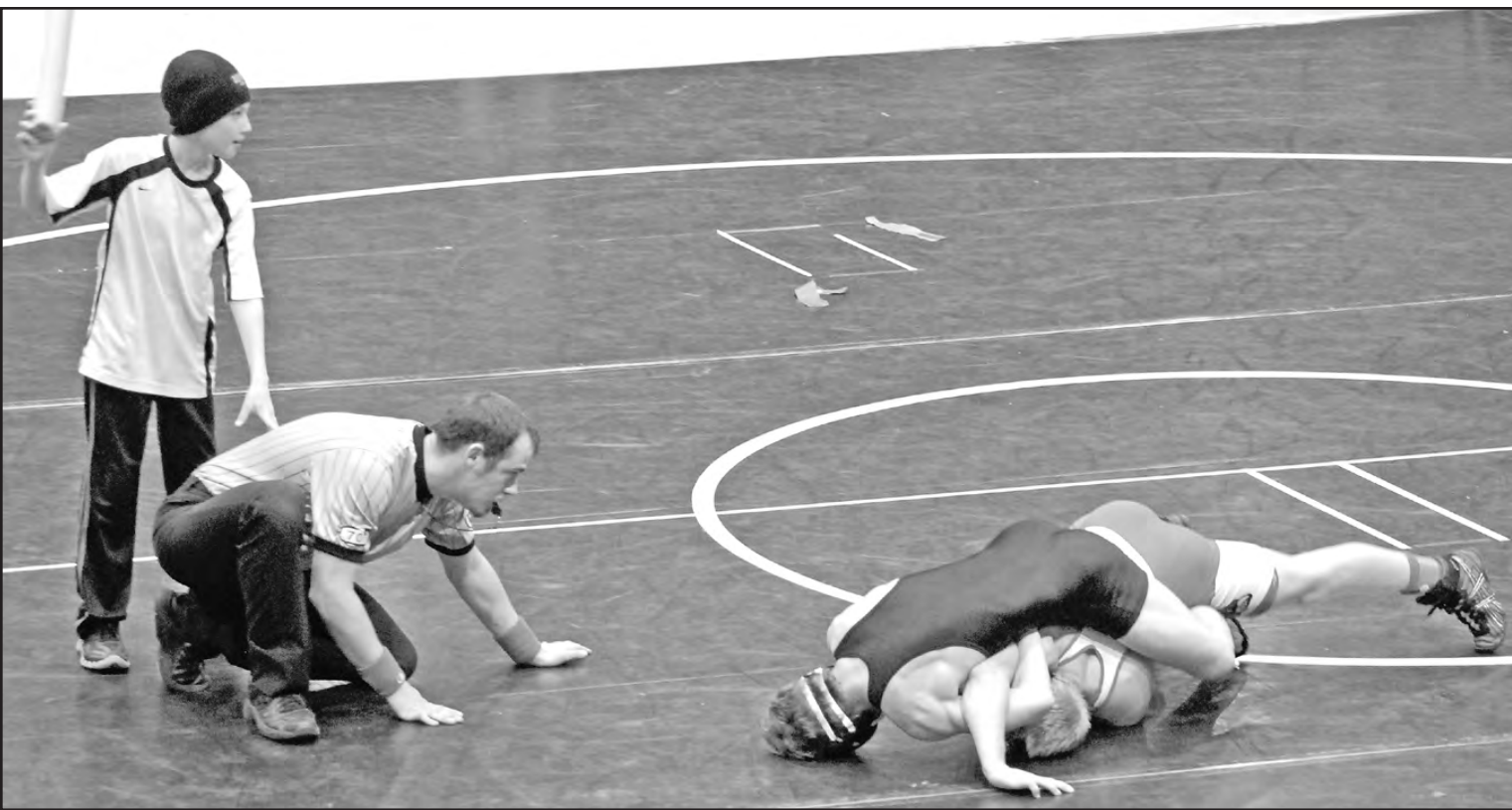
FULL TIME ADVERTISING EXECUTIVE

Work week is 40 hours. Computer skills are helpful but not required. Must have good communication skills, excellent customer service skills with attention to detail, and enjoy a fast-paced atmosphere.

BASE PAY PLUS COMMISSION!

SEND A LETTER AND RESUME TO:
Kevin Bottrell, Editor, 1205 Main, Goodland, KS 67735
Email: kbottrell@nwkansas.com
or apply in person. No calls please.

The
Goodland Star-News
1205 Main, Goodland, KS 67735



Kids Wrestling tournament brings hundreds to Goodland

The Max Jones Fieldhouse was packed with athletes, coaches and spectators on Saturday for the Kansas Kids Wrestling District 4 Tournament. District 4 includes 43 counties in Western Kansas. The 2014 Kansas State Wrestling Folkstyle Championship Tournament is Friday through Sunday at the Kansas ExpoCenter in Topeka. District 4 wrestlers will begin against District 2.

Photos by Kevin Bottrell
The Goodland Star-News



Follow us
on
Facebook



FUN BY THE NUMBERS

		8					4	2
			3		7			
						3		1
8			7					
2					9		8	6
			4				9	
	3	9			2			4
			9	6	1	7		
	1							

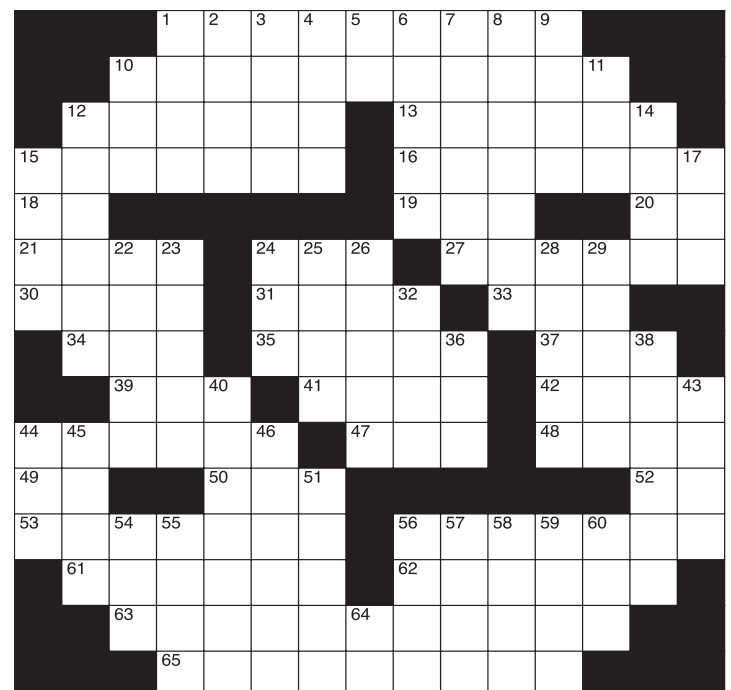
Level: Beginner

Like puzzles? Then you'll love sudoku. This mind-bending puzzle will have you hooked from the moment you square off, so sharpen your pencil and put your sudoku savvy to the test!

Here's How It Works:

Sudoku puzzles are formatted as a 9x9 grid, broken down into nine 3x3 boxes. To solve a sudoku, the numbers 1 through 9 must fill each row, column and box. Each number can appear only once in each row, column and box. You can figure out the order in which the numbers will appear by using the numeric clues already provided in the boxes. The more numbers you name, the easier it gets to solve the puzzle!

Crossword Puzzle



CLUES ACROSS

- Recapture the past
- "Tosh.0" and "South Park" are two
- Military greeting
- Passenger ships
- Can't move
- Any omission of a part
- 43rd state
- Compassionate nursing care
- Pa's partner
- Dutch cheese
- London radio station
- Perfumed powder bag
- Liquid body substances
- Expresses pleasure
- Escape from prison
- Long-wave hue
- Bleated
- Male swan
- Head cover
- Fewer calories
- Teal duck genus
- Inspire with love
- Grab
- Cruel inhuman person
- 6th musical tone
- Indigenous tribe of Indonesia
- Megabyte
- Headpin in bowling
- Light, fitful naps
- Precede
- Greek and Turkish Sea
- Pot 'o gold location
- Was in disagreement

CLUES DOWN

- A player's part
- Ratites
- Distribute
- 15th day of March
- Empire State
- Small island
- Con or swindle accomplices
- Oasts kiln shape
- Female sheep
- Motor vehicle
- ___ Lanka
- More melancholy
- Not all
- Apple, pumpkin or a la mode
- ___ King Cole, musician
- Palms with egg shaped nuts
- Mistress of a household
- Founder of Babism
- Semitic fertility god
- Connected links
- Chocolate tree
- Miao-Yao is their language
- Moss capsule stalk
- Young society woman
- Bartenders
- Buried port city
- One point S of SE
- Cervid
- Inexperienced (var.)
- Exercises authority over
- Handles
- Neither
- Alumnus
- Sunrise
- Cease exertion
- Double curve
- Maneuver
- Not happy
- Old English

The crossword puzzle brought to you by:

The

Goodland Star-News

1205 Main, Goodland, Kan. 67735
(785) 899-2338

School calendar for March 26-April 1

Goodland High School • Grant Junior High School
West Elementary School • Central Elementary School

The INSURANCE AGENCY Inc.

1020 Main
Goodland, KS
(785) 899-5011

Susan Doke Roxann Kling

Culligan

better water. pure and simple.®

- Drinking Systems
- Water Softeners (Sales & Rentals)
- Water Coolers • Salt Sales & Delivery

904 Main Street, Goodland
(785) 899-2352

Hitchcock INC. of GOODLAND VALLEY

The Leader in Precision Irrigation

328 W. Hwy. 24, Goodland, KS
(785) 899-5628

CASE III AGRICULTURE

AG POWER
EQUIPMENT SUPPLY

124 W. Highway 24, Goodland, KS
(785) 899-3432

Wednesday:
7:30 a.m.: PLC

Thursday:
3 p.m.: Varsity Softball at Hays

Saturday:
Solo and Ensemble contest

Monday:
3 p.m.: Varsity Baseball, here versus Wray

Tuesday:
GWAC Art Show in Colby
2 p.m.: Junior High Track at Limon

Linda & Walt Linthacum
- Owners/Agents
L & W
Andrist
Insurance Agency, LLC
102 E. 8th (8th & Main), Goodland, KS
(785) 890-5678 • 800-892-4245



SHORT & SON INC.

SINCE 1934

Goodland, KS 67735
PHONE: (785) 899-2592
Livestock & Machinery Hauling
Bonded Livestock Dealers

PS Crop Production Services

Highway 27, Goodland
(785) 899-5601

We proudly support
our area schools!

The
Goodland Star-News

1205 Main, Goodland, KS 67735
Phone: (785) 899-2338
Email: star.news@nwkanas.com