

## weather report

**88°**  
 10 a.m.  
 Monday



### Today

- Sunset, 7:24 p.m.
- Wednesday**
- Sunrise, 6:12 a.m.
- Sunset, 7:23 p.m.

### Midday Conditions

- Soil temperature 73 degrees
- Humidity 43 percent
- Sky sunny
- Winds southwest 17 - 25 mph
- Barometer 30.13 inches and steady
- Record High today 102° (1960)
- Record Low today 44° (1911)

### Last 24 Hours\*

High Sunday	97°
Low Sunday	66°
Precipitation	none
This month	0.79
Year to date	8.64
Below normal	6.86 inches

### The Topside Forecast

Today: Sunny and hot with a high near 99, winds out of the southwest at 5 to 10 mph and a low around 66. Wednesday: Sunny with a high near 95, winds out of the southeast at 5 to 15 mph and a low around 65.

### Extended Forecast

Thursday: Sunny and hot with a high near 97 and a low around 67. Friday: Sunny and hot with a high near 99 and a low around 67. Saturday: Sunny and hot with a high near 98 and a low around 68. Sunday: Sunny with a high near 96.

(National Weather Service)

Get 24-hour weather info. at 162.400 MHz.

## local markets

10 a.m.

- Wheat — \$7.05 bushel
- Posted county price — \$6.66
- Corn — \$6.39 bushel
- Posted county price — \$6.02
- Milo — \$5.68 bushel
- Soybeans — \$13.94 bushel
- Posted county price — \$13.50
- Millet — no bid
- Sunflowers
- Oil current crop — \$21.30 cwt.
- Confection — no bid
- Pinto beans — \$28
- (Markets by Scoular Grain, Sun Opta, Frontier Ag and 21st Century Bean. These may not be closing figures.)

## inside today

More local news, views from your Goodland Star-News



About a dozen officers, deputies, troopers, other law enforcement employees, and Selby, the police's drug dog, took part in the torch run. Photos by Kevin Bottrell/The Goodland Star-News

# Cops carry torch for Special Olympics

A procession of flashing lights was seen heading down several streets in Goodland on Friday, but it wasn't an emergency, it was the Special Olympics Kansas Law Enforcement Torch Run.

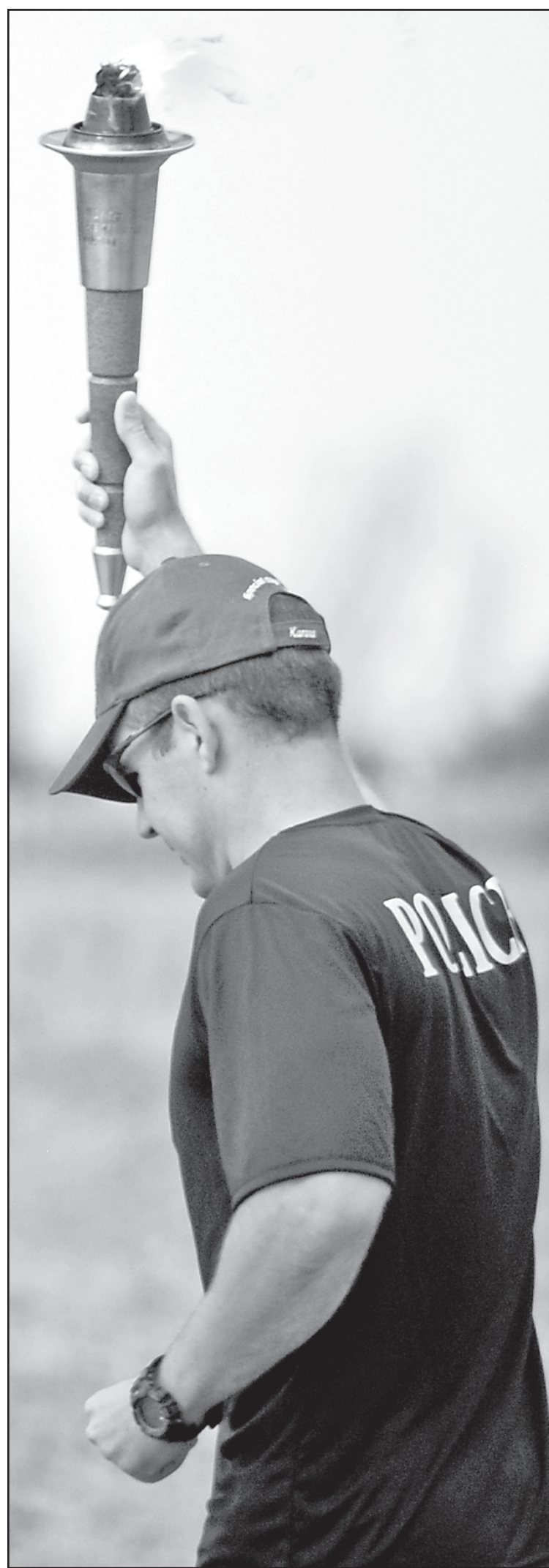
About a dozen Goodland Police Officers, Sheriff's Deputies, Kansas Highway Patrol troopers and other local law enforcement employees gathered at Golden West Friday morning to start the run. The Sheriff's Department brought out its big truck to carry local Special Olympics athletes while law enforcement officers ran behind with the torch. The runners, escorted by police vehicles, went down Kansas Avenue, then took Eighth Street to Main. They went down Main Street to 17th Street. They stopped at the High Plains Museum where

many of the Special Olympics Athletes got out to run beside the officers. The run finished at the Van Gogh, where an ice cream social was held for the athletes, officers and the community.

Other torch runs have been held across the state, including several in northwest Kansas, as a fund raiser and awareness campaign for Special Olympics Kansas. The next Special Olympics event will be the World's Largest Convoy on Saturday, Sept. 7, which brings together truck drivers from all over the region in one big convoy. One leg of the convoy will start in Goodland while the other will start in Oakley. The two will meet in Colby, where there will be a social gathering for the drivers and athletes.



The law enforcement runners stopped briefly at the High Plains Museum to allow some of the Special Olympics Kansas Athletes to get out of the truck and run as well (above). Police Chief Cliff Couch (right) lit the torch to get the run started before handing it off to other officers.



# Library to hold talk on domestic servants

The Goodland Public Library will hold a presentation "African American Women Domestic: The Story of Two Kansas," at 7 p.m. Tuesday, Sept. 10.

Angela Bates will present the free program, which is made possible by the Kansas Humanities Council.

Ernestine and Charlesetta Williams of Nicodemus learned basic cleaning and cooking skills from their mother and grandmother, who had been enslaved in Kentucky. When they moved to California in the 1950s, their

domestic skills provided many employment opportunities, even in Hollywood. Bates will discuss the family legacy of domestic work and share mementos Ernestine and Charlesetta collected.

Bates is the executive director of the Nicodemus Historical Society. She presents educational programs across the nation covering Nicodemus, Exodusters and black towns in the west, Buffalo Soldiers and black women in the west.

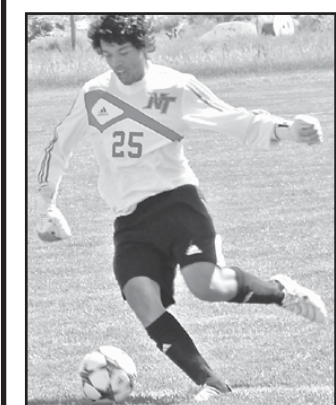
"When I watched the movie 'The Help,' I

reflected on my own experiences as the child of a domestic cook," Bates said. "My mother and aunt shared wonderful stories about their experiences with such greats as Walt Disney, John Wayne, Bob Hope and others. This rich history makes me proud of their accomplishments and appreciate the skills that I now possess as a professional cook."

"African American Women Domestic: The Story of Two Kansas," is part of the Kansas Humanities Council's "The Way We Worked" Speakers Bureau, featuring presen-

tations and discussions examining the theme of work and working in Kansas and how these stories help define us.

The Kansas Humanities Council conducts and supports community-based programs, serves as a financial resource through an active grant-making program and encourage Kansas to engage in the civic and cultural life of their communities. For more information, visit [www.kansashumanities.org](http://www.kansashumanities.org).



## Mavericks win Saturday

The Northwest Kansas Technical College beat Northeastern Junior College at home on Saturday for the first win of their regular season.

See Page 10



## Brewster celebrates 125th Anniversary

Visitors checked out the classic cars and trucks on display (right) during the Brewster 125th Anniversary celebration last weekend. The two-day event included many different activities such as Buffalo Bingo (above) with Jenny the buffalo provided by Goodland's The Buffalo Guys.

Photos by Heather Alwin and Ken Klemm





card shower

Friends of Josephine Mann are requesting a card shower to celebrate her 90th birthday on Saturday, Aug. 31. Her address is 1619 Caldwell, Goodland, Kan. 67735.

patient news

Roger Collins is in Citizens Medical Center in Colby and would appreciate calls and cards. He lost part of his leg about a year ago and is at risk for losing part of his other leg. His address is 100 E. College Drive, Room 118, Colby, Kan. 67701 or (785) 462-751.

genesis and salvation army

Genesis and Salvation Army are available year round to help those in need. Call (785) 890-2299 to speak to a volunteer.

activities

Tours of the 1907 Victorian House at 202 W. 13th are from 1 to 5 p.m. Wednesday through Monday. Closed on Tuesday.

The High Plains Museum, 1717 Cherry Ave., is open from 9 a.m. to 5 p.m. Monday, Wednesday through Saturday and from 1 to 5 p.m. Sunday. Closed Tuesdays.

The Carnegie Arts Center is open from 10 a.m. to 5 p.m. Tuesday through Saturday, 1 to 4 p.m. on Sunday and 1 to 6 p.m. on Monday at 120 W. 12th. The center is always in need of hosts and hostesses on Sundays. New monthly exhibits and you are invited to visit the gift shop.

The Goodland Public Library is open from 10 a.m. to 7 p.m. Monday through Thursday and from 10 a.m. to 5 p.m. Friday and Saturday. For information call (785) 899-5461 or stop by the library.

Big Brothers/Big Sisters of Sherman County is seeking mentors and children to mentor. Call 890-3665.

The Good Sam Family Support Council meets at 7 p.m. the second Thursday of every month at the Goodland Elks Lodge. Meetings are open to all interested people. For information call 890-3117 or 890-5936.

Breast Cancer Support Group meets at 5:30 p.m. the second Monday of the month. Any woman with cancer is welcome. Call Norma at 890-6629 for more information.

The Goodland Activities Center has the daily activities. For information call 890-7242. Memberships options for everyone including day passes for \$5. Visit goodlandgac.com or stop by 808 Main. The hours are 5:30 a.m. to 8 p.m. on Monday through Thursday, Friday 5:30 a.m. to 6 p.m., Saturday 10 a.m. to 6 p.m. and Sunday 1 to 5 p.m. Aerobics are at 5:30 a.m. on Monday and Wednesday. Insanity class meets at 5:30 a.m. on Monday, Tuesday, Wednesday, Thursday, Friday and Saturday. Taekwondo with Wayne Luckert call for times and dates.

Weight Watchers meets at 5:30 p.m. for weigh in and 6 p.m. for the meeting every Tuesday at the Harvest Evangelical Free Church, 521 E. Hwy. 24. For information call (785) 890-6423.

Goodland Alcoholics Anonymous, 1013 Center. If you drink alcohol, that's your business. If you want to stop, we can help. Call 821-3826 or 728-7491.

Goodland Al-Anon Family

the calendar

calendar

There will be a hot dog feed at 5 p.m. on Saturday, Sept. 14, at Smoky Gardens. Heartland Soul will provide live music.

The Brewster Library and Museum will have this year's Annual Hot Dog/Watermelon Feed starting at 5 p.m. (Mountain Time) on Thursday at Hunter Hall Park. Donations will go to the library and museum.

The Young Professionals After Hours Tailgate will be held at 5:30 p.m. on Friday, Sept. 6, in the parking lot across from the post office.

A presentation on "African American Women Domestic: The Story of Two Kansans" will be held at 7 p.m. on Tuesday, Sept. 10, at the Goodland Public Library, 812 Broadway.

Discussion of the book "Holes" by Louis Sachar will be led by Valerie Brown-Kuchera at 6:30 p.m. on Thursday, Sept. 19, at the Goodland Public Library, 812 Broadway.

Goodland will have its first 5K/1 mile Glo Run on Saturday, Sept. 28. Registration starts at 8 p.m. and the run is from 9 to 10 p.m. The night run begins at Chambers Park, 13th and Sherman, and will take runners on a tour of Goodland. Runners have the choice of taking a one mile route or a 5K route and are en-

couraged to wear their brightest gear. Registration is available online at cityofgoodland.org, goodlandgac.com and facebook.com/goodlandeventsteam. Pre-registration is \$15, registration the day of the run is \$20. Registrations make prior to Friday, Sept. 6, will include a t-shirt.

The Goodland Farmers Market is open Saturdays from 8 a.m. to 11 a.m. at Chambers Park. Selling are baked goods and fresh garden vegetables.

Prairie Land Food sign up will be until Monday, Sept. 16. Distribution is 1 to 2 p.m. Saturday, Sept. 28, at Cat's TnT, 1018 Main, or at the Bernadine Johnson residence, located at 704 Walnut. For information call 899-2338, 821-1275, 890-2287, 821-1827 or 899-4278 or order online at www.prairielandfood.com. The Prairie Pak will have lean ground beef, boneless ham steak, chicken breast strips, pork sausage, pollock fillets, seasonal fresh fruits and vegetables. The specials are a prime rib roast, Schwann's pepperoni pizzas, chicken breast chunks and turkey cutlets.

senior menu

Today: Ham and beans, coleslaw, cornbread and cantaloupe. Wednesday: Taco salad, citrus slices, chips and fruit cobbler. Thursday: Cook's choice entree, oven fried potatoes, seasoned

carrots, bread and cottage cheese with fruit. Friday: Chicken salad sandwich, baked beans, macaroni salad, bun and Mandarin oranges.

school menu

Today: Breakfast - Baked French toast stripes with syrup, strawberries and bananas and milk. Lunch - Chicken nuggets, mashed potatoes with gravy, fresh broccoli, strawberries and bananas and milk. Wednesday: Breakfast - Western melet quesadilla with salsa, potato rounds, fresh pear and milk. Lunch - Chili, whole grain corn chips, celery and cucumbers, cinnamon roll, orange smiles and milk. Thursday: Breakfast - Scrumptious coffee-cake, sunrise smoothie, graham crackers and milk. Lunch - Baked ham, two potato mash, green beans, angel biscuit with jelly, kiwi and milk. Friday: Breakfast - Biscuit and gravy, apricots, fruit juice and milk. Lunch - macaroni and cheese, meat balls, seasoned peas, fresh baby carrots, whole wheat bread with jelly, apple wedges and milk.

school calendar

Today: 5:30 p.m. multicultural potluck at West Elementary. Wednesday: 7:30 a.m. professional learning community. Thursday: none. Friday: 6:15 p.m. football and cross country sports drink scrimmage. 8 p.m. back to school dance.

Group meets at 6 p.m. on Fridays at First Christian Church, 711 Arcade. For information call Alice or Marilyn at 890-5914 or 821-2862.

The "Freedom Today" group of Narcotics Anonymous meets at 8 p.m. Tuesdays, 8 p.m. Fridays and 8 p.m. on Sundays at 1013 Center. Call 890-8369.

Bird City Alcoholics Anonymous group meets at 6:30 p.m. (Mountain Time) on Fridays at the Senior Center on 4th Street. Narcotics Anonymous meets at 6:30 (Mountain Time) on Tuesdays at the Senior Center. Call (785) 734-2734 for more information.

Stratton "AA by the Book" Alcoholics Anonymous group meets at 7 p.m. Thursdays for a beginners open meeting. Filies and young people welcome. Call (719) 348-5398 for men and (719) 346-8553 for women. On U.S. Highway 24 go to Statton and it is the second house on the left, 513 Iola Street.

Fibromyalgia and Chronic Myofascial Pain Support Group meets from 6:30 to 8:30 p.m. the third Wednesday of every month in the Emergency Medical Services building, 257 15th St., in Burlington. Call Debbie at 719-346-4612.

thrift store

The Goodland Churches Thrift Shop, 1002 Main, is open from 10 a.m. to 5 p.m. on Monday through Friday. Donations welcome. For information call 890-2007.

health department

The Sherman County Health Department at 1622 Broadway is open from 8 a.m. to noon and 1 to 5 p.m. Monday through Friday. Blood pressures; infants', chil-

dren's and adults' immunizations; health assessments for Kan Be Healthy, daycare and school entry; fasting blood sugar and hemoglobin; and family planning available by appointment. Sharps containers are available for a fee. WIC program available. Call 890-4888 or go to www.sherman.kansas.com.

If you have questions, concerns or complaints about child care, call the health department.

Water Testing - The Northwest Local Environmental Protection Group does well evaluations, including testing for bacteria and nitrates. To schedule an evaluation or discuss environmental concerns, call the Health Department at 890-4888.

hospital volunteers

Gift shop hours are 9 a.m. to noon and 1 to 4 p.m.; a.m. and p.m. volunteers are in the gift shop.

early head start

Early Head Start is a state funded program for income eligible families with prenatal mothers and children up to age three. Families participate in a variety of educational activities and receive free medical and dental care.

Services include special needs of children with disabilities. If you have a family member with a special problem, such as drug or alcohol abuse, job loss or other family crisis, your family can qualify. Call 785-672-3125, ext. 187.

preschool

Sherman County Head Start is a free preschool for eligible 3 and 4 year olds. The federally funded program is targeted to families who

meet certain economic guidelines and provides hearing, vision, dental and educational screenings. Nutritious meals are served, and parents are encouraged to get involved in their children's education. For information call 890-2552.

crimestoppers

If you have information about any crime, call the Goodland Area Crime Stoppers "Look Line" at 899-5665. Your call will be confidential and you will not be asked your name. If the information results in the arrest and/or conviction of those involved, you could be eligible for a reward of up to \$1,000. Goodland Area Crime Stoppers is a nonprofit organization formed by citizens against crime.

The police department can also be called at 890-4570.

family shelter

The Northwest Kansas Domestic and Sexual Violence Services provides help day or night to victims of domestic violence and sexual assault. For information or help, call (800) 794-4624. In the Colby area, call (785) 443-1130.

animal shelter

Lost a pet? Call 890-4575 or go to www.petfinder.com and be sure to enter the Goodland zip code 67735. You can also call the Goodland Police Department at 890-4570 or Northwest Kansas Animal Shelter at 899-4398. Interested in adopting a pet? Call the animal shelter or go to the website www.nwkasgoodland.webs.com.

vice Center of Oakley. She received her Master of Arts in literature from Fort Hays State University.

For more information call (785) 899-5461 or go to www.goodlandlibrary.org.

obituary

Katherine Hope Davis

Katherine Hope Davis, 94, Goodland homemaker, died Thursday, Aug. 22, 2013, at her home in Goodland.

She was born on Oct. 17, 1918, to Adolph and Julesie (Hansson) Gemmer in Bird City. In 1938 she graduated from Sherman Community High School.

On Aug. 13, 1943, she and Jim Trablik were married in Watertown, N.Y. He died in 1978.

On Dec. 3, 1989, she and Irvin Davis were married in Wallace County. He died in 2002.

Mrs. Davis was a member of the Seventh Day Adventist Church since 1954.

She enjoyed gardening, crocheting and reading.

Preceding her in death were her husbands; her parents; two sisters, Julesie Olsen and Agnes Gemmer; two brothers, Rudy Gemmer and Jack Stewart; three grandchildren,

Robert Scott Ayers, Marcia Pugh and Cody Sharp; and a great-granddaughter, Esther Le'Chelle Salts.

Survivors include three daughters, Judy (Grady) Nations of Burlington, Beth Pugh of Goodland and Vicki (Guy) Fitzwater of Santa Fe, N.M.; a sister, Freda House of Goodland; 10 grandchildren; 24 great-grandchildren and 16 great-great-grandchildren.

Services will be at 10 a.m. on Tuesday, Aug. 27, 2013, at the Seventh Day Adventist Church in Goodland with Pastor Jim McCurdy officiating and burial in the Goodland Cemetery.

Visitation was from 3 to 7 p.m. on Monday, Aug. 26, 2013, at Koons Chapel, 211 N. Main, Goodland.

Memorials to Amazing Facts Ministries may be sent to the funeral home.



Davis

KOONS FUNERAL HOME, INC

AND MONUMENTS  
www.koonsfuneralhome.com

Conference to talk about grazing lands

Has the stress and worry of the present drought caused you to question the way in which you make management decisions on the grazing lands you operate?

Over the past couple of growing seasons, statements often heard are "I don't like the way my pastures look; or "I sure have had an increase in weedy-type plants" since the drought has been in place. Both are indications that ranchers are concerned about the plant communities in their pastures.

With droughts which have staying power, the stress to both the land and the manager can accumulate. The answer is to gain a better understanding of how climate and plant communities interact with one another.

The Kansas Graziers Association along with the Natural Resources Conservation Service and Kansas Farmers Union will hold a one-day drought-plan-writing workshops Tuesday at the conservation service's Conference Center at 747

Duvall, Salina.

Presenters include: conservation service range specialists David Kraft, Dwayne Rice and Doug Spencer. Also on the program is experienced rancher Ted Alexander, who has developed and implemented drought plans that have greatly benefited his ranch.

Attendees will be encouraged to:

- Identify critical decision dates at their ranch location.
- Pinpoint decisions which they can make before actual drought conditions are present.
- Seek the development of a ranch forage inventory which is the benchmark for fine tuning all decisions on the ranch.

The workshop will begin at 8:30 a.m. (Mountain Time) and finish mid-afternoon. There is no cost. Lunch will not be provided; a break at noon is scheduled.

For information contact Mary at kfu.mary@gmail.com or call (785) 562-8726.

Current and past farm costs compared

In the latest installment to the Arthur Capper Cooperative Center fact sheet series, Brian Briggeman and Chuck Mickelsen explore the evolution of the costs of agricultural production, and peer into the future evolution of these costs.

"Today, the costs of agricultural production have surged to the historically high levels of the late 1970s," said Briggeman, director of the Arthur Capper Cooperative Center at Kansas State University.

Briggeman and Mickelsen, both from the Department of Agricultural Economics at Kansas State, compared these elevated costs to the 1970s, showing that technological costs have surged for today's producers. On an inflation-adjusted basis, total costs of producing an acre of corn are just two percent higher today than they were in 1975. Where the differences lie between these two time periods is in the cost

of seed, nearly 200 percent higher, and cost of machinery and equipment, nearly 100 percent higher.

"While some costs have risen sharply, land rental costs remain below their 1970s highs," said Briggeman. "Looking ahead, economic conditions suggest costs may continue their rise, especially land rents."

These added costs have provided benefits to farmers, such as improved yields and farm efficiency. And at today's commodity prices, these benefits have led to solid profit opportunities for crop farmers.

However, history has shown that these profits are often short-lived. So, the question is will these profits hold if these sizable costs continue to grow?

Information is available by contacting Briggeman at bbrigg@k-state.edu or (785) 532-2573.

Library book discussion to be in September

Discussion of "Holes" by Louis Sachar will be led by Valerie Brown-Kuchera of the Northwest Kansas Educational Service Center at 6:30 p.m. on Thursday, Sept. 19, at the Goodland Public Library, 812 Broadway.

The book talks about when Stanley Yelnats is sent to Camp Green

Lake, a juvenile detention center. He discovers that the lake is a vast dry bed where the inmates dig holes each day in the searing sun. The mystery of the warden's obsession with digging is gradually revealed as the story weaves the story of Stanley's incarceration with family myths of his "no-good-dirty-

rotten-pig-stealing-great-great-grandfather."

This is part of the Talk About Literature in Kansas book discussion series provided by the Kansas Humanities Council.

Brown-Kuchera coordinates seminars and conferences for the Northwest Kansas Educational Ser-

vice Center of Oakley. She received her Master of Arts in literature from Fort Hays State University.

For more information call (785) 899-5461 or go to www.goodlandlibrary.org.

Got family news? Call 899-2338

Enjoy a night at the movies!  
Sherman  
TONIGHT 7 PM  
Wolverine 3D (PG-13)  
Starts Friday 7 PM: The Conjuring (R)

The Goodland Star-News SUBSCRIBER  
Shannon Cure  
You receive two free passes to see:  
WOLVERINE 3D (PG-13)  
Clip and bring to the show. Non Transferable  
The SHERMAN THEATRE  
1203 Main Avenue • (785) 899-6103

American Profile  
Celebrating Hometown Life  
See American Profile magazine in this week's issue of  
Your sponsorship could be right here!  
(available in local area only)  
Brought to you by:  
The Goodland Star-News  
Call The Goodland Star-News today for more information!  
(785) 899-2338

Country Legends  
www.catcountry.org  
Fun on the Farm Jamboree  
at the Sherman Theatre, Goodland, KS  
Saturday, October 26, 2013, shows at 2 p.m. and 7 p.m. MT  
Featuring Georgette Jones and Country Legend T.G. Sheppard  
\$25 TICKETS ON SALE NOW AT THE GOODLAND STAR-NEWS!  
The Goodland Star-News  
1205 Main Avenue, Goodland, KS 67735 • Ph: (785) 899-2338



## Fun at the 50's drive-in



The Goodland United Methodist Youth held a 50's Drive-In Diner and also invited people to show off their show cars in the parking lot. Some of the servers and some attending the hamburger and hot dog feed were dressed in 50's styles. Some of the cars in the parking were a Mustang Mach I and Model A's. The money raised will be used for a youth mission trip in the summer of 2014.

Photos by Pat Schiefen/The Goodland Star-News



## K-State is lead center on wheat

The National Science Foundation has named Kansas State University as its lead institution for the world's first Industry/University Cooperative Research Center on wheat.

The premier center, named the NSF/UCRC Wheat Genetics Resource Center, is the first National Science Foundation-established research center for any crop plant. It will focus on improving the food production and disease resistance of wheat and other crop plants, as well as serve as a training hub for graduate students and young researchers.

Currently, there are 61 National Science Foundation Industry/University Cooperative Research Centers, most of which are devoted to engineering and electronics.

"We're thrilled that Kansas State University is recognized as an international leader in securing and improving major food sources that are vital to feeding the world's growing population," said Kirk Schulz, university president. "This decision by the National Science

Foundation and the support of our industry partners underscores the expertise and talent at Kansas State University. It is a significant milestone in being recognized as a Top 50 public research university by 2025."

The National Science Foundation center will be divided between Kansas State University and Colorado State University, with Kansas State University serving as the lead institution. Bikram Gill, university distinguished professor of plant pathology and director of the university's Wheat Genetics Resource Center, will serve as director.

Collaborators include Kansas State University's departments of agronomy, plant pathology, entomology and grain science and industry; the U.S. Department of Agriculture's plant science and wheat genetics units; the Kansas Wheat Commission; the Kansas Wheat Alliance; and multiple corporations, including Bayer Crop Science, Syngenta, Limagrain, Dow

AgroSciences LLC, General Mills and the Heartland Plant Innovation Center.

The National Science Foundation awarded a seed grant to start the research center, with the stipulation that at least three industry partners had to join and financially back the center. According to Gill, 10 companies signed on as partners.

The Kansas-based research center will be largely based at the Kansas Wheat Innovation Center in Manhattan, where scientists will conduct research on wheat germplasm improvement, using the wheat gene bank of the Wheat Genetics Resource Center.

Both the gene bank -- which maintains about 14,000 wild wheat species strains and about 10,000 genetic stocks -- and its accompanying laboratory will relocate to the Kansas Wheat Innovation Center, Gill said. Several postdoctoral research fellows also will transition to the building.

According to Gill, the research

center creates unprecedented opportunities for graduate students and postdoctoral researchers to work alongside industry partners and academic scientists, as well as to develop new genetic research that could immediately improve food security and safety.

"It's really a win-win for all involved," Gill said. "It's good news for Kansas State University because it's taking one of the university's big strengths and using it to improve food supplies, food safety and the economy, and train future scientists. It's good news for businesses that are interested in improving their wheat growing and breeding efforts. They will be able to use this research to accelerate those areas. We see this as very, very exciting news."

### corrections

The Goodland Star-News will correct any mistake or misunderstanding in a news story. Please call our office at (785) 899-2338 to report errors. We believe that news should be fair and factual. We want to keep an accurate record and appreciate you calling to our attention any failure to live up to this standard.

**Classifieds work!**  
899-2338

**SHERMAN** Goodland, Kansas  
COUNTY SPEEDWAY  
www.shermancountyspeedway.com

**Saturday, August 31**  
**6:30 p.m. MT**

Pit Pass Pricing: \$25: 12 & up; \$10: 12 & Under  
Grandstand Pricing: \$10: 13 & up • \$5: 6-12 • 5 & under FREE  
Grandstands open at 2 p.m. MT • Pit Gates Open 12 p.m. MT  
Hot Laps: 4:00 p.m. MT • Pit Gates Close At 5:30 p.m. MT

- IMCA MODIFIEDS • IMCA STOCKS
- ECONO'S • IMCA HOBBY STOCKS
- IMCA NORTHERN SPORT MODS

**Track sponsors:**  
Budweiser and SCSRA

## Goodland students to get free books

Reading is Fundamental, the largest nonprofit children's literacy program, and Macy's Inc. have teamed up to award the Northwest Kansas Educational Service Center Early Head Start and Head Start programs a grant to buy books for children and their families.

The Early Head Start and Head Start programs will have book distributions in their classrooms the month of October with this money. These kids get to pick

from a variety of age appropriate books to keep.

Reading is Fundamental has given 400 million books to 37 million children since 1966. Since 2004 Macy's has helped raise \$25.8 million for the Reading is Fundamental program.

Counties of the kids that will benefit from this grant are Sherman, Cheyenne, Decatur, Gove, Graham, Logan, Norton, Rawlins, Thomas, Trego and Wallace.

## Goodland High School Black & Gold Boosters



Proudly supporting GHS students in academics, activities and athletics.

**Membership BBQ**  
**Friday, August 30 at 5 p.m.**  
**Cowboy Stadium, west end**  
**\$5 per plate (no carry-outs please)**

Thank you to the following donors:

- |             |                                  |
|-------------|----------------------------------|
| Hamburgers: | Century Feeders                  |
| Buns:       | Eklund's First Insurance         |
| Chips:      | Wilkins Truck & Trailer          |
| Cookies:    | Goodland Regional Medical Center |
| Drinks:     | S&T Communications               |
| Publicity:  | The Goodland Star-News           |

**We want parents, grandparents, business people, faculty, staff and YOU to be a member!**

### Membership dues:

- |                        |                       |
|------------------------|-----------------------|
| <b>Single:</b>         | <b>\$15.00</b>        |
| <b>Family:</b>         | <b>\$20.00</b>        |
| <b>Black:</b>          | <b>\$30.00</b>        |
| <b>Gold:</b>           | <b>\$50.00</b>        |
| <b>Cowboy/Cowgirl:</b> | <b>\$100.00</b>       |
| <b>Corporate</b>       | <b>\$250 &amp; up</b> |

**BIG** savings on our Truckload Sale of GM engines and GM transmissions.  
**SAVE HUNDREDS!**  
Call Rich, Kamron or Nathon at Vince's GM Center.  
**(719) 346-5326 or (800) 231-8991.**  
Can deliver within 200 miles from Burlington  
**VINCE'S GM CENTER**  
1847 Rose Avenue, Burlington, CO 80807  
GMC www.vincesgmcenter.com

Do new people know about your business?  
Let us help at 899-2338



from our viewpoint...

# Who watches the watchdogs?

Given that the First Amendment precludes the government from being an actual "watchdog on news media," who else steps in to call the news media to account?

In today's world, increasingly it is citizen-critics or organizations outside of mainstream journalism, empowered by the Web's ability for two-way conversations and comments, and by independence from past restraints of expensive printing presses and broadcast machinery.

There's one more approach, present in about 25 news organizations: An in-house public critic, the ombudsman. In various ways and formats, those ombudsmen – down from 40 such positions just a few years ago – tackle complaints, evaluate newsgathering and arbitrate claims of misreporting, distortion and even the absence of coverage.

Sometimes called "reader advocate" or "public editor," the idea of an on-the-payroll, independent reviewer is a relatively new concept in the United States – about a half-century in its current form.

Their very-public presence means correcting faults in public. Whistleblowers exist in many kinds of businesses, but rarely are they paid to operate in plain view from the start – which can result in some very-public spats.

Case in point: The current flap inside National Public Radio over a 2011 report critical of South Dakota's state-funded efforts that relocated what the report said was a surprisingly high number of Native American children into foster care. NPR ombudsman Edward Schumacher-Matos spent more than a year checking the report and found that it was "fundamentally flawed," according to a story posted on NPR's online news site.

The original NPR report said state authorities appeared to disregard the federal Indian Child Welfare Act, which favors placing Native American children with relatives or other Native American families before other options – and may have done so because of cultural bias and to gain increased federal aid to support such placements, involving as much as \$100 million.

Both Schumacher-Matos and NPR News agree that figure isn't correct. But they disagree over the tone of some of the report, and whether state officials' views were properly represented. In the end, the ombudsman's 80-page critique may well be more significant for opining on a story missed or underreported than about factual errors.

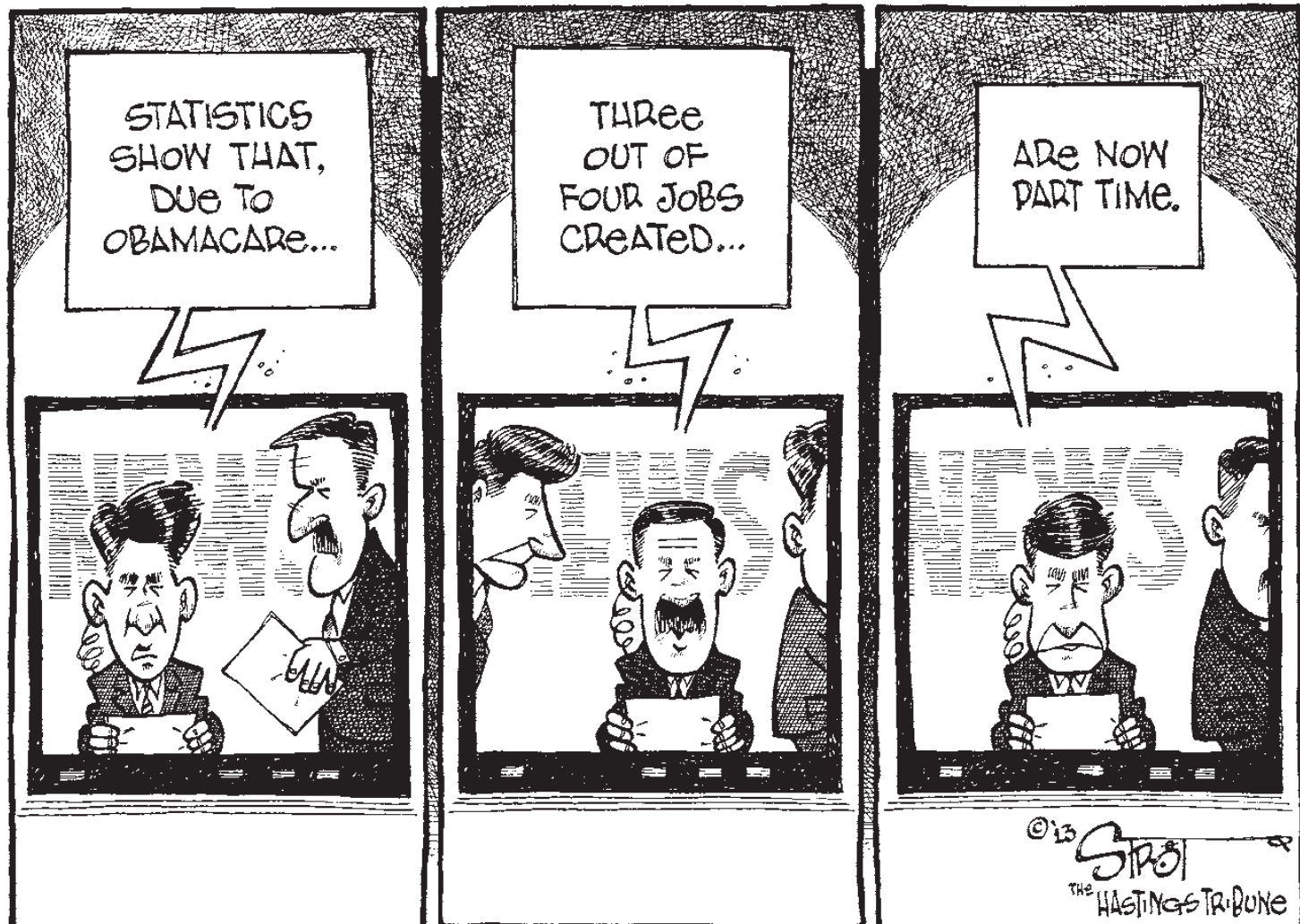
NPR's management stands by the story's essentials, while conceding some mistakes. But, "I had a gnawing sense that the real issue was deeper than the story," Schumacher-Matos wrote.

The ombudsman wrote that "... the centrally relevant matter of child neglect is simply dismissed. That many of the foster decisions, meanwhile, are in fact made by the tribes' own independent judges goes unreported altogether. The crucial context of social ills and a crisis of Indian family breakdowns on the state's reservations are also all but missing."

Newsrooms large and small have been battered by economic hardship and traditional audiences have been splintered by new ways of getting information. What's left to sustain a free press is a focus on credibility – fair and truthful reporting – that surveys and polls say the public wants.

More news operations should provide for the kind of public follow-up and self-critique that NPR engaged in, both for the sake of accuracy and to sustain a free press. By holding itself accountable with the same vigor the news media employs on others, we will have the credible "watchdog on government" that the nation's Founders envisioned.

—Gene Policinski, chief operating officer of the Newseum Institute and senior vice president of its First Amendment Center



# Sheriff budget increase not justified

To the Editor:

I know that our commissioner meetings usually last from four to five hours or longer; therefore it is impossible for the newspaper to print everything that goes on and a lot of it is quite boring. I have been asked if there is only one commissioner, but would like to assure the public that there are three commissioners sitting there making the decisions and we all bring something different to the table but work together for the common good of the community.

I have learned that sometimes it is best for me to write my thoughts down and read them so as not to miss any points that I want to make. Therefor I am submitting the thoughts that I read to the Sheriff at our budget meeting and I feel like a lot of the points that I made were missed in the last newspaper article, so the following is what I read to our Sheriff and our Undersheriff so you know what I am thinking and what homework I do to try to make the correct decisions.

"Sheriff: you are elected by the people to protect them and uphold the law and we are elected as the chief executives of the county, and one of our main jobs is to budget wisely. I have received several calls after the article in the paper and want to make it perfectly clear that the Commission is not asking for this budget increase for the Sheriff's Office, the Sheriff is requesting the increase.

This confusion seems to stem from last year's election, when at the forum the past Sheriff state that every year he had returned



from our readers

• to the editor

money from the general fund at the end of the year and your rebuttal was that he must be over budgeting. The Commission looked long and hard at that budget and did cut it some from what he requested for this year.

At our last budget meeting with you, you stated that if everything went well the rest of the year you would come in under budget by approximately \$30,000. I would like to thank you and commend you on a job well done staying within your budget guidelines.

The increase you are asking for is \$146,000, which equates to a little over two mills. This year the public will see a fair increase in their taxes due to the school bond issue passing by popular vote. I think another two mills on top of that would be more than the general public could stand.

There are approximately 6,000 people in this county and a little more than 4,000 reside within the city limits of Goodland. The City of Goodland budgets around \$500,000 for the city police, and if we add the \$720,000 you are asking for that will make a total of a little over \$1.2 million the taxpayers will be paying for law enforcement.

I checked with Dispatch and as of Monday, Aug. 19, the police had been called by Dispatch

a little more than 10,500 times since the first of the year, and the Sheriff's Office has been called upon a little more than 7,500 times since the first of the year. It is apparent that law enforcement is very busy in this country.

One of the largest raises in your budget plan is for salaries. You have stated that you are short on manpower and need more employees, and some employees have not even had ample time for vacation in the past. I had the deputy clerk pull all the records and all the past and present employees have had or been paid for their vacation time except for one. The new Undersheriff has lost about three hours of vacation time.

I have also looked over all of the overtime for this year, and see that there is very little, which makes me think that you are doing a good job scheduling, but also makes me wonder about the need for extra personnel. I think at this time the Commission agrees that you may need some capital expenditures as you have to have equipment as well as maintain it to do your job.

I do not feel at this time that all of the proposed increases are justifiable. Another point that needs to be made is when you sit on this side of the table, we as Commissioners must remember that we have to budget more than \$20,000 in benefits for each full time employee, which consist of health insurance, social security taxes, workmen's compensation, retirement, etc.

Larry Enfield  
Sherman County Commissioner

## The Goodland Star-News

(USPS No. 222-460. ISSN 0893-0562)

Member: Kansas Press Association

Inland Press Association Colorado Press Association  
National Newspaper Association

e-mail: [star.news@nwkansas.com](mailto:star.news@nwkansas.com)

Steve Haynes, President  
Kevin Bottrell, Editor  
Pat Schiefen, Society Editor  
Advertising Department

Jessica Harenberg and Angela Bonham  
Sheila Smith, Circulation Manager

### Nor'west Press

Richard Westfahl, General Manager  
Gary Stewart, Jim Bowker, James Jackson  
Kris McCool, Tracy Traxel,  
Judy McKnight, Sheri Arroyo.

[nwkansas.com](http://nwkansas.com)

N.T. Betz, Director of Internet Services  
([nbetz49@nwkansas.com](mailto:nbetz49@nwkansas.com))

Evan Barnum, Systems Admin. ([support@nwkansas.com](mailto:support@nwkansas.com))

Published every Tuesday and Friday except the days observed for New Year's Day, Memorial Day, July 4th, Labor Day, Thanksgiving and Christmas Day, at 1205 Main Ave., Goodland, Kan. 67735.

Periodicals postage paid at Goodland, Kan. 67735; entered at the Goodland, Kan., Post Office under the Act of Congress of March 8, 1878.

POSTMASTER: Send address changes to The Goodland Star-News, 1205 Main Ave., Goodland, Kan. 67735.

TELEPHONE: (785) 899-2338. Editorial e-mail: [star-news@nwkansas.com](mailto:star-news@nwkansas.com). Advertising questions can be sent to: [goodlandads@nwkansas.com](mailto:goodlandads@nwkansas.com)

The Goodland Star-News assumes no liability for mistakes or omissions in advertising or failure to publish beyond the actual cost of the ad.

SUBSCRIPTIONS: In Sherman County and adjacent counties: three months, \$29; six months, \$46; 12 months, \$81. Out of area, weekly mailing of two issues: three months, \$39; six months, \$54; 12 months, \$89 (All tax included). Mailed individually each day; (call for a price).

Incorporating:

## The Goodland Daily News

1932-2003

### The Sherman County Herald

Founded by Thomas McCants  
1935-1989

### THE SHERMAN COUNTY STAR

Founded by Eric and Roxie Yonkey  
1994-2001

### Nor'West Newspapers

Haynes Publishing Company

# Journey to health



sheri arroyo

• little fish

The state of our health is a contributing factor to every single facet of our life. It affects our feelings of personal well-being and self worth. How healthy we feel affects our approach to work and interferes with our social interactions. Our health even affects the service we perform for our fellow man and our service to The Lord. It is much easier to feel that all is right with the world when our body is functioning at its optimum.

Health and Nutrition were not Blessings that I enjoyed as a child. My parents did the best they could with the resources they had, but meals were intended to fill the stomach and keep you alive. And I had a Anxiety Disorder even back then, of course they just called it "bad nerves" back in the day.

And as an adult I've enjoyed cycle after cycle of symptomatic physical misbehavior. In fact, there's probably not in the entire world a specialty field that hasn't poked, and prodded, and pondered upon this perfect specimen of spectacularly unhealthy and obese carnage that I've been carrying around for almost half a century.

But let's face it, physical ills are a reality of life...

We have been warned of the dangers in the improper and indiscriminate use of drugs, including "over-the-counter drugs." Cans of immediate and fast acting energy are sold at almost every store. And in this day and age it is easier, faster, and more popular to get a lump of fat on a bun than it ever was to get a plate full of healthy. And even in the least social of lives it is difficult to find the time for proper exercise, most find it difficult to find even the opportunity.

So there is no surprise in hearing that health experts say obesity constitutes a major health problem, especially in the United States. In fact, the Surgeon General recently declared obesity a disease. Being overweight increases the risk of many other diseases and creates physical discomfort as well as psychological burdens.

So, what then is the solution?

I've come to the conclusion that since I must partake of this Earthly Experience, maybe I should be able to enjoy it a bit... So, I decided to do something about the poor shape of the vehicle that I am driving around in this life. So, recently I went on a journey looking for health. My plan includes an all natural health supplement, accompanied by a change in eating habits and increased exercise. Some of you may have noticed the change in my column photo. I've had a bit of success. I've also been researching online about the possible effects of adding other natural ingredients to my diet.

For instance, a common kitchen spice that is generally known for its qualities of taste have a myriad of healthful benefits. So a few of the following columns will be dedicated to just that: healthful benefits to spicing up our lives and a healthier future.

As always, your views and opinions are welcome. To contact me directly, email me at [littlefish\\_67@yahoo.com](mailto:littlefish_67@yahoo.com).

el servicio que realizamos para nuestros semejantes y nuestro servicio para el señor. Es mucho más fácil de sentir que todo está bien con el mundo cuando nuestro cuerpo está funcionando en su grado óptimo.

Salud y nutrición no fueron las bendiciones que disfruté como una niña. Mis padres lo hicieron lo mejor que pudieron con los recursos que tenían, pero las comidas estaban destinadas a llenar el estómago y mantenerse con vida. Y tenía un trastorno de ansiedad, incluso entonces, por supuesto sólo lo llamaron "Mal de los nervios" en el día.

Y he disfrutado como un adulto ciclo tras ciclo de conducta física sintomática. De hecho, probablemente no hay en el mundo entero una especialidad que no ha pinchado y empujado y reflexionó sobre este espécimen perfecto de carnicería espectacularmente obesa y poco saludable que he estado cargando durante casi medio siglo.

Pero seamos realistas, los males físicos son una realidad de la vida...

Nos lo hemos advertido de los peligros en el uso inadecuado e indiscriminado de drogas, incluyendo "medicamentos". Latas de inmediato y rápido actuando energía se venden en casi todas las tiendas. Y en este día y edad, es más fácil, más rápido y más popular para conseguir un trozo de grasa en un pan que alguna vez fue para conseguir un plato lleno de sana. Y ni siquiera en el menos social de vidas es difícil encontrar el tiempo para el ejercicio adecuado, más les resulta difícil encontrar siquiera la oportunidad.

Así que no hay ninguna sorpresa en la audiencia que los expertos en salud dicen que la obesidad constituye un problema de salud importante, especialmente en los Estados Unidos. De hecho, el Cirujano General recientemente declarado la obesidad una enfermedad. El sobrepeso aumenta el riesgo de otras enfermedades y crea malestar físico, así como las cargas psicológicas.

Así que ¿cuál es la solución...

Yo he llegado a la conclusión de que ya debo participar de esta experiencia terrenal, quizá debería poder a disfrutar un poco... Entonces, decidí hacer algo sobre el mal del vehículo que estoy conduciendo en esta vida. Recientemente, fui en un viaje en busca de salud. Mi plan incluye un suplemento de salud natural todos, acompañado por un cambio en sus hábitos alimenticios y ejercicio creciente. Algunos de ustedes habrán notado el cambio en la foto de mi columna. He tenido un poco de éxito. También he estado investigando en Internet sobre los posibles efectos de la adición de otros ingredientes naturales para mi dieta.

Por ejemplo, una especia de cocina común que generalmente es conocida por sus cualidades de sabor tienen un sinnúmero de beneficios saludables. Así que algunas de las siguientes columnas se dedicará a eso... Beneficios saludables a aderezando nuestras vidas y un futuro más saludable...



# Southern Corn Rust appearing in Kansas

Small, light brown, circular lesions covering corn leaves this time of year are not a welcome sight.

Southern corn rust, a fungal disease caused by the Puccinia polysora pathogen, begins to show up in Kansas around Aug. 1 each year, according to Kansas State Research and Extension plant pathologist Doug Jardine. Corn producers, particularly those who farm north of Interstate 70, should evaluate each field for the disease and determine if fungicide treatment is necessary and economical.

Jardine identified southern corn rust in Kansas for the first time in 2013 on Aug. 1 in McPherson County. He said he has since seen it in other north-central Kansas counties including Riley, Clay, Cloud and Washington, but there may be more cases other crop scouts have identified elsewhere.

The disease does not live year-round in Kansas, as it requires a live plant to survive. It lives mainly in southern Texas and northern Mexico, where temperatures allow corn to grow year-round, and it travels northward to the U.S. Corn Belt each summer. Because the disease is currently wide-spread in south central Nebraska, it would have had to blow over Kansas from those southern areas.

The negative impact of southern corn rust depends heavily on a number of factors:

- Weather forecast.
- Stage of crop development.
- Yield potential of the field.
- Amount of disease in the field.
- Susceptibility of the hybrid.

Southern rust is favored by hot, humid conditions, which Kansas experienced in early August. However, mid-August temperatures cooled, which Jardine said slowed the spread of southern rust.

Although the recent weather has been a benefit to farmers, the stage of the corn might be a problem.

"The problem this year is corn was planted two to three weeks late," Jardine said. "This is a problem across the entire Corn Belt."

If corn is hit with southern rust and has not yet passed the soft dough stage - 35 days before maturity - it may be beneficial for farmers to spray fungicides. Products containing a triazole mode of action are recommended.

If the corn is already in the denting phase of maturity, Jardine said, producers probably won't see an economic benefit to spraying, as the rust likely won't affect the yield too much. He said much of south central Kansas has reached that denting stage of development already and likely won't need to be sprayed.

Jardine said corn producers should evaluate each field separately. If southern rust has hit a

field of younger corn and the corn has good yield potential, spraying could be economical.

"There is some good corn this year, and some of it has 200 (bushel per acre) yield potential," Jardine said. "A field with a reasonable amount of rust could have 10 to 15 percent yield loss."

A 10 percent loss on a 200-bushel per acre yield is 20 bushels. If corn is at \$6 per bushel, that could mean \$120 loss per acre. Therefore, Jardine said, it would be economical to pay \$30 per acre to spray that field.

Jardine said the worst-case situation would be to see an epidemic of southern rust early on that is not treated, and producers could see as much as a 30 percent loss. With the current cooler-than-normal August temperatures, though, that is not a likely situation this year.

Another tip for producers is to research how susceptible their corn hybrid might be to a southern rust. Genetic resistance to southern rust is limited, with most hybrids rating five to seven on a scale of one to nine (one being resistant). In Kansas, greatest yield losses to southern rust occur when susceptible hybrids are planted late or when the disease arrives earlier than normal. The crop that is two to four weeks behind and is more susceptible to southern rust should be examined very closely.

# Brass band to play in Oberlin on Sept. 7

The Nebraska Brass will perform at 6:30 p.m. (Mountain Time) at the Oberlin Gateway Center on Saturday, Sept. 7, sponsored by the Oberlin Arts and Humanities.

Founded in 1987, the Nebraska Brass is one of the Midwest's most popular brass quintets and recently celebrated its 25th anniversary season. Audiences young and old enjoy serious musicianship and light-hearted humor as the group presents a variety of music ranging from classical to popular, including Dixieland and jazz.

The Nebraska Brass is composed of musicians with a wealth of experience in both classical and commercial idioms. Members have performed with ensembles such as the Omaha Symphony Orchestra, Lincoln's Sym-

phony Orchestra, Nebraska Jazz Orchestra, Dallas Symphony, Chicago Symphony Orchestra, Nashville Symphony, Strategic Air Command (U.S. Air Force) and Mannheim Steamroller. In addition, members have toured and performed throughout the U.S., Australia, Europe, South America, Japan, and the Caribbean with numerous musical ensembles.

In addition to their busy performing schedules, members are experienced as educators in Nebraska and Iowa public schools and Nebraska Wesleyan University in Lincoln. They have released four CD's.

This is a season ticket event or \$12 for adults and \$7 for students grades 1-12. For information call Ella Betts (785) 475-3557 or Mary Henzel (785) 470-0218.

# The Goodland Star News Service Directory

## August Service Special

### Oil Change Special

5 qts. Conventional Oil & Filter change **\$19<sup>95</sup>\***

6 qts. Dexos Oil & Filter change **\$26<sup>95</sup>\***

\*Not valid with other offers. Not valid on Diesel Engines. Not valid with synthetic oil. Expires 8/31/2013.

No sales tax on labor in Colorado.

**SCHEDULE ONLINE AT:**  
[www.vincesgmcenter.com](http://www.vincesgmcenter.com)

1847 Rose Ave., Burlington, CO 80807  
(800) 231-8991 • (719) 346-5326

Be sure to visit us on Facebook!

## WEEKEND SPECIAL

### FRIDAY, SATURDAY AND SUNDAYS!

Half rack ribs, mashed potatoes, corn on the cob and a drink **ONLY \$10!**

Hours:  
Monday-Saturday 10:30 AM-8:30 PM  
Sundays 10:30 AM-2 PM



**FRIED CHICKEN • BBQ BRISKET • HOT WINGS**

1016 Main Street, Goodland, KS 67735 • Phone (785) 890-3710

The Service Directory does the hard work for you!

Call Angela today to find out how!  
(785) 899-2338



**RCDS**  
RIGHT COMBINATION DANCE ★ STUDIO

[www.rcdsnnow.com](http://www.rcdsnnow.com)

**Come try one of our ZUMBA or Yoga classes!**




**better water. pure and simple.®**

- Drinking Systems • Water Softeners (Sales & Rentals)
- Water Coolers • Salt Sales & Delivery

**Scheopner's Water Conditioning, Inc.**


Goodland & Colby, KS • Toll free: (800) 536-2352

Welcome




**Dr. Justin Evanson**  
DDS, MD

Oral and Maxillofacial Surgeon



Dr. Justin Evanson has joined the Burlington Family Dentistry team, providing **ORAL SURGERY with IV SEDATION**, including wisdom teeth extractions. •• Accepting most insurances. ••

Now you can have oral surgery right here in Burlington and avoid the trip to the city.



**Jason Ehtessabian,**  
DDS, PC

Please call for an appointment  
(719) 346-8266

**BURLINGTON FAMILY DENTISTRY**  
340 14th St. • Burlington  
[www.burlingtonfamilydentistry.net](http://www.burlingtonfamilydentistry.net)

Dr. E

**Don't swelter through another hot summer!**




Sleep in cool, cool comfort with a dependable Trane air conditioning system. Don't hesitate... call today for information!

**Bowman Heating & Air Conditioning**  
(785) 899-5770  
577 W. 31st, Goodland

"Seek Shelter Today!"

LIFE • HOME • CAR • FARM • BUSINESS



**Jim Alcorn, Agent**  
1624 S. Main Street  
Goodland, KS 67735-0727  
Business: (785) 899-2553



[www.shelterinsurance.com](http://www.shelterinsurance.com)

**WANTED: DIRTY CARPET**

**IF YOU HAVE DIRTY CARPET, WE CAN STEAM CLEAN IT.**  
**NO JOB TOO BIG OR TOO SMALL!**

- Commercial/Residential
- Advanced Truck Mounted Steam Cleaning Equipment
- Water Damage Restoration
- FREE ESTIMATES

**PRO FLOOR CARE**  
Carpet & Upholstery Cleaning  
(785) 462-8313 or (800) 473-4138



Cleaning NW Kansas one house at a time!



**NEBRASKALAND KANSASLAND COLORADOLAND TIRE GROUP**

**KANSASLAND TIRE**

**Willie Weems**  
Store Manager  
24-hour Service

1402 Main Goodland, KS 67735  
www.thetirestore.com  
Tire and Auto Service Professionals

785.899.3689  
Fax: 785.899.2131  
Toll Free: 800.281.3689

**Windy Plains Bike Shop**

Professional bicycle repairs since 1978!  
Parts, accessories and service for all makes.  
Pick up and delivery available in Goodland!

**TIRED OF FLATS? ASK ABOUT OUR NO FLAT GUARANTEE!**

**Harold Sneten**  
6085 Rd. 17  
(785) 899-4786 • (785) 899-5858 (home)  
Same day service on most out of town repairs!



## Truck Lettering

**800-886-2423**

AWARD WINNING SIGNS AND PINSTRIPING SINCE 1974

**Hot Brush** 204 W. 4th Box 309  
Bird City, Kan. 67731

**The Decorating Co.**


Interior Design Consultants  
**Irene Smith & Rochelle Kling**

There's no limit to our imagination.

**106 E. 11th, Goodland, KS 67735**  
(785) 890-5441  
E-mail: [decorco@st-tel.net](mailto:decorco@st-tel.net)




**NEW SYSTEM PROFESSIONAL WINDOW CLEANING**



Serving Northwest Kansas & Northeastern Colorado since 1992!

(785) 462-6995 OR (800) 611-6735  
[egriffith@st-tel.net](mailto:egriffith@st-tel.net)

[www.mywindowcleaner.net](http://www.mywindowcleaner.net)




Eldean and Janet Griffith • PO Box 692, Colby, KS



**Superior**  
Flooring and Furniture and Accessories

**360 14th St., Burlington, CO ~ PHONE: (719) 346-7579**  
Dan and Myrna Troyer



"Where Service is an Affair of the Heart"

**DAN BRENNER FORD, INC.**

222 W. HWY. 24, I-70 BUSINESS LOOP, GOODLAND, KS  
(Toll Free) 800-636-8770  
(Business) 785-899-2316 (Fax) 785-899-2317

**Langer Industrial Service**

2022 County Road 11 • Levant, KS 67743 • 785-586-2208  
Monday - Friday 8 a.m. - 5 p.m.

**We pay cash up to for all scrap metal\***

- Brass • Copper • Aluminum • Batteries • Electric motors • Cars
- Combines • Farm Equipment • Prepared/Unprepared Iron and Tin
- Container Service • Off site baling and car crushing
- Limited pickup service available

Schedule deliveries after normal business hours by appointment when necessary  
\* Some Conditions Apply

**Langer Industrial Service**

2022 County Road 11 • Levant, KS 67743 • 785-586-2208  
Monday - Friday 8 a.m. - 5 p.m.

**We pay cash up to for all scrap metal\***

- Brass • Copper • Aluminum • Batteries • Electric motors • Cars
- Combines • Farm Equipment • Prepared/Unprepared Iron and Tin
- Container Service • Off site baling and car crushing
- Limited pickup service available

Schedule deliveries after normal business hours by appointment when necessary  
\* Some Conditions Apply



# State association trains coaches, keeps records

By Ron Wilson

Director

Huck Boyd National Institute for Rural Development at Kansas State University

School is back in session and fall sports are gearing up. Have you ever wondered: Who coaches the coaches? Who officiates the officials? Who records the records? And for that matter, who leads the youth leaders? It is essential that there is a state high school activities association which leads and regulates these activities. In our state, that association is led by an executive who will now be serving at the national level as well. He comes from rural Kansas.

Gary Musselman is executive director of the Kansas State High School Activities Association. The

Kansas State High School Activities Association is a statewide, self-funded, non-profit association which organizes, governs and regulates interscholastic activities. In Kansas, the association has more than 750 member schools including middle and high schools, public and private.

Gary Musselman has rural roots, having grown up at Ness City. He was actually born in the nearby community of Ransom, population 326 people. Now, that's rural.

From the time he was a sophomore in high school, Gary knew he wanted to be a teacher and a coach. He went to Kansas State for his secondary education degree and later earned a master's in secondary school administration from Wichita State. Through the years, Gary served as a teacher and coach

at Independence, Andover, Beloit and Halstead. He was the high school principal at LaCrosse before joining the staff of the Kansas State High School Activities Association in 1988 and becoming executive director in 1996.

So what are the functions of the association? Some of the organization's activities are highly visible, such as the state tournaments for high school sports. Others are less well known such as the scholars bowl, music festivals or debate programs. The association keeps a list of state winners and state records in athletics and also supports the Kansas Association for Youth organization and student councils.

"Annually, more than 105,000 kids are in school athletics across Kansas," Gary said. "Another 30 to

50,000 participate in competitions such as music or debate." Each of these activities needs a common set of rules which the activities association provides.

"We have a legislative board of 78 elected representatives of schools across the state which makes the rules," Gary said. "Then we have an executive committee and a separate appeals board to which a parent may appeal a ruling. Only a small fraction of the work we do involves rules enforcement," he said.

Gary believes that school activities should be a laboratory for learning, a place to learn sportsmanship and citizenship in a way that reflects the educational values of Kansas.

"A 2008 University of Kansas study showed that 94 percent of the 2,000 kids who dropped out were

not involved in school sports," Gary said. "When kids are engaged (in activities), it is very meaningful to their educational success. School activities help kids learn life skills."

In addition to the KAY leadership program, the association operates a student council summer workshop. For coaches, the association offers mandatory rules tests which coaches must pass with 90 percent proficiency. For officials, the association offers registration, testing, and training for nearly 5,000 men and women. For schools, the association offers the opportunity for fair student competition, plus specific benefits such as catastrophic insurance coverage for student-athletes.

Now Gary's leadership is being taken to the national level. In 2013, he was selected to serve a four-year

term on the Board of Directors of the National Federation of State High School Associations based in Indianapolis.

"I am blessed and honored," Gary said. "We are planting seeds. It is rewarding being involved with things that help kids develop." For more information, go to [www.kshsaa.org](http://www.kshsaa.org).

School is back in session, and so are fall sports. So who officiates the officials? Who coaches the coaches? And who leads the student leaders? The Kansas State High School Activities Association. We commend Gary Musselman and all those at the activities association, plus all those involved in our schools and our teams. They are making a difference by supporting these activities which keep our kids active.

# Gene found to stop early sprouting

A new study about the common problem of preharvest sprouting, or PHS, in wheat is nipping the crop-killing issue in the bud.

Researchers at Kansas State University and the U.S. Department of Agriculture-Agricultural Research Service, or USDA-ARS, found and cloned a gene in wheat named PHS that prevents the plant from preharvest sprouting. Preharvest sprouting happens when significant rain causes the wheat grain to germinate before harvest and results in significant crop losses.

"This is great news because preharvest sprouting is a very difficult trait for wheat breeders to handle through breeding alone," said Bikram Gill, university distinguished professor of plant pathology and director of the Wheat Genetics Resource Center. "With this study, they will have a gene marker to expedite the breeding of wheat that will not have this problem."

Gill conducted the study with Guihau Bai, a researcher with the Hard Winter Wheat Genetics Research Unit of the USDA-ARS, adjunct professor of agronomy at Kansas State University and the study's lead author. Also involved were Harold Trick, professor of plant pathology; Shubing Liu, research associate in agronomy; Sunish Sehgal, senior scientist in plant pathology; Jianui Li, research assistant professor; and Meng Lin, doctoral student in agronomy, all

from Kansas State University; and Jianming Yu, Iowa State University.

Their study, "Cloning and Characterization of a Critical Regulator for Pre-Harvest Sprouting in Wheat," appears in a recent issue of the scientific journal "Genetics."

The finding will be most beneficial to white wheat production, which loses \$1 billion annually to preharvest sprouting, according to Gill.

He said consumers prefer white wheat to the predominant red wheat because white wheat lacks the more bitter flavor associated with red wheat. Millers also prefer white wheat to red because it produces more flour when ground. The problem is that white wheat is very susceptible to preharvest sprouting.

"There has been demand for white wheat in Kansas for more than 30 years," Gill said. "The very first year white wheat was grown in the state, though, there was rain in June and then there was preharvest sprouting and a significant loss. The white wheat industry has not recovered since and has been hesitant to try again. I think that this gene is a big step toward establishing a white wheat industry in Kansas."

Gill said identifying the PHS gene creates a greater assurance before planting a crop that it will be resistant to preharvest sprouting once it grows a year later. Wheat breeders can now bring a small tissue sample of a wheat plant into a lab and test

whether it has the preharvest sprouting resistance gene rather than finding out once the crop grows.

Much of the work to isolate the PHS gene came from Gill and his colleagues' efforts to fully sequence the genome -- think genetic blueprint -- of common wheat. Wheat is the only major food plant not to have its genome sequenced. The genome

of wheat is nearly three times the size of the human genome.

Researchers were able to study sequenced segments of the common wheat genome and look for a naturally occurring resistance gene. Gill said without the sequenced segments, finding the PHS gene would have been impossible.

**KANSAS LUXURY ESTATE & ACREAGE AUCTION**  
 Sept. 25<sup>th</sup> at 10 am | 29910 Antioch Rd., Louisburg, KS 66053

Property previously listed at \$5 million - Opening bid \$500,000

Preview Dates: Thurs., Aug 29<sup>th</sup> & Sept 12<sup>th</sup> - 4-7 pm

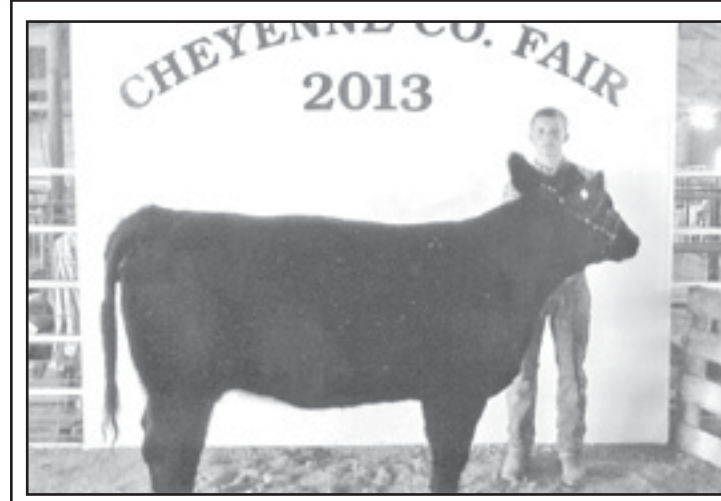
- 10,000± sq. ft. home on 54± acres
- English greenhouse
- Replica Kansas Jayhawks basketball court
- Barn & stables
- Heated pool
- Stocked pond

United Country Kansas City Auction & Realty | 816-507-4242 • KansasLuxuryEstate.com  
 Paul A. Light, Broker #BR00220476 - Richard Shawn Terrell, Auctioneer #BR00216208  
 Terms: 8% Buyer's Premium. See website for complete terms and conditions.



**Thank You**  
 Truck and Tractor Repair for purchasing my 2013 Market Steer! Thank you for all you do for the agriculture industry and 4-H in Northwest Kansas.

Travis Rogers



**Thank You**  
 Crop Production Services for purchasing my breeding heifer at the 2013 Cheyenne County 4-H premium sale. Your support of 4-H and the agriculture industry you serve is greatly appreciated.

Taylor Rogers

**PROFESSIONAL JOB EXPO**  
 with on the spot interviews

**Mosaic/ 2708 N 11th Street/ Garden City**  
**Wednesday, September 4 and**  
**Thursday, September 5 - 9:30 AM to 6:30 PM**

Mosaic is currently looking for motivated, dedicated professional leaders for careers with a purpose:

**Accounting, Public Relations, Management, Human Resources, Nursing**

Positions require college degree and experience in each respective related field. Must also have a valid driver's license and good driving record with a clear criminal record. Mosaic is a drug-free workplace.

Mosaic offers a comprehensive benefits package including a free health insurance option! Other benefits include dental insurance, vision coverage, paid time off, 403(b) retirement program, tuition assistance, supplemental insurance, a compelling mission and much more!

Go to [www.mosaiccareers.org](http://www.mosaiccareers.org) to learn more.

**MOSAIC**  
 A life of possibilities for people with intellectual disabilities.

**Estate Sale**  
**LOG HOME KITS**

AMERICAN LOG HOMES IS ASSISTING LIQUIDATION OF LAND DEVELOPER'S ESTATE

3 Log Homes selling for **BALANCE OWED. FREE DELIVERY**

- Model #101 Carolina \$38,940 - **BALANCE OWED \$17,000**
- Model #203 Georgia \$49,500 - **BALANCE OWED \$22,900**
- Model #305 Biloxi \$36,825 - **BALANCE OWED \$15,700**

**NEW - HOMES HAVE NOT BEEN MANUFACTURED**

- Make any design changes you desire!
- Comes with Complete Building Blueprints & Construction Manual
- Windows, Doors, and Roofing NOT INCLUDED
- **NO TIME ON DELIVERY**

View at [www.thegreatamericanlogco.com](http://www.thegreatamericanlogco.com)  
 Ready Only Reply. Call 704-602-3035 ask for Accounting Dept.

**Dr. Sarah Gabel**  
 Joins Family Center for Health Care

Dr. Sarah Gabel practices a wide range of family medicine including obstetrics. She is Board Certified in Family Practice with a fellowship in OB. She offers the full spectrum of diagnostic and treatment procedures for maintaining wellness, treating illness and injuries, and dealing with acute needs. Dr. Gabel provides continuing and comprehensive health care for the individual and family across all ages, genders, diseases, and body systems.

Dr. Gabel will begin seeing patients September 4.

**Office Hours:**  
 Mondays: Off  
 Tuesdays: 8AM-4:30PM  
 Wednesdays: 8AM-1PM  
 Thursdays 1PM-7PM  
 Fridays: 8AM-12PM

310 E. College Drive, Colby, KS  
 (785) 462-6184 or 1-800-453-6751  
[www.nwkshealthcare.com](http://www.nwkshealthcare.com)

- Family Practice
- Adult (male and female) Medicine
- Obstetrics and C-sections
- High Risk Pregnancy
- Family Planning
- Elder Care
- Pediatrics
- Non-Surgical Tubals
- Abnormal Pap & Abnormal Bleeding

Dr. Kelly Gabel, General Surgeon  
 Dr. Darren Matchell  
 Dr. John Dygert  
 Brian Unruh, PA-C  
 Andy Rose, PA-C  
 Jennifer Haag, PA-C  
 Luetta Flanagan, ARNP  
 Tricia Carney, ARNP  
 Tina Benson, ARNP

**Dr. Kelly Gabel**  
 General Surgeon Joins Family Center for Health Care

Dr. Gabel offers surgical procedure options close to home for the communities we serve. As a general surgeon Dr. Gabel performs a variety of surgeries from lumpectomies to trauma and is available for consultations. He is trained in the latest laparoscopic and general surgery procedures allowing our citizens to receive the highest quality surgical care in Colby.

Dr. Gabel is originally from St. Francis, and is glad to be back in northwest Kansas fulfilling a long-time personal dream.

Dr. Gabel will begin seeing patients September 4.

**Office Hours:**  
 Mondays: 8AM—12PM, 1PM-4PM  
 Tuesdays: O.R., 7AM-5PM  
 Wednesdays: 8AM-12PM, O.R., 1PM-5PM  
 Thursdays: 8AM-12PM, O.R. 1PM-5PM  
 Fridays: Off

(785) 462-6184 or 1-800-453-6751  
[www.nwkshealthcare.com](http://www.nwkshealthcare.com)

Here are just a few of the procedures Dr. Gabel provides.

- Appendectomy
- Hysterectomies & Mastectomy
- EGD & Colonoscopy
- Bowel resection
- Gall Bladder Removal
- Trauma Care
- Laparoscopic Procedures

Dr. Darren Matchell  
 Dr. John Dygert  
 Dr. Sarah Gabel  
 Brian Unruh, PA-C  
 Andy Rose, PA-C  
 Jennifer Haag, PA-C  
 Luetta Flanagan, ARNP  
 Tricia Carney, ARNP  
 Tina Benson, ARNP



# The Community Page



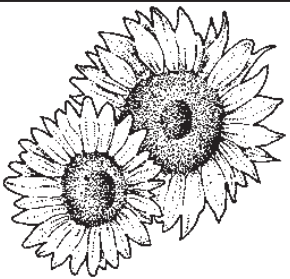
SINCE 1934  
Hwy. 24 • Goodland, Kan. • (785) 899-2592



**Truck & Tractor Repair, LLC**

Over 30 years experience with quality truck repair and maintenance!

Phone: (785) 899-2401  
714 E. Hwy. 24, Goodland, KS 67735



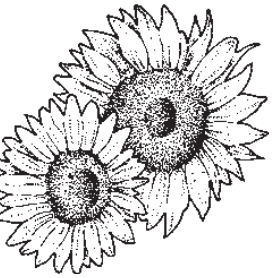
"Where Service is an Affair of the Heart"  
**DAN BRENNER FORD**

222 W. Hwy. 24, I-70 BUSINESS LOOP, GOODLAND, KS  
(Toll Free) 800-636-8770  
(Business) 785-899-2316 (Fax) 785-899-2317



**Gambino's Pizza**

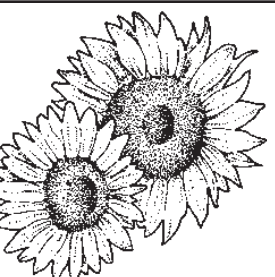
402 E. 17th, Goodland • (785) 8905988



**Your Ad**

Could Be Here!  
Call Angela at 899-2338

The Goodland Star-News



**YOUR AD**

could be here!  
Call Angela at 899-2338

The Goodland Star-News



The Grant Junior High parliamentary team that went to the national Family, Career and Community Leaders of America conference in Nashville, Tenn. Pictured are team members Layne Goodwin, Katie Brighton, Kayleigh McCombs, Chelsea Phillips and Kaitlyn Townsend. Alternate Demi Mitchek was not pictured. Photo by Sarah Short

## Junior High club members attend national conference



Kinsey Volk stood by her display for her presentation in National Programs in Action. Volk won a gold medal for her efforts. Photo by Sarah Short

Members of Family, Career and Community Leaders of America from Grant Junior High qualified to go to the 2013 National Leadership Conference in Nashville, Tenn., in July. Students attending were Kinsey Volk, Demi Mitchek, Katie Brighton, Kayleigh McCombs, Chelsea Phillips, Kaitlyn Townsend and Layne Goodwin with their advisor Sarah Short.

Volk participated in National Programs in Action and presented her successful project "Feed My Starving Children." She received a gold medal.

The parliamentary team of Layne Goodwin, Brighton, McCombs, Phillips, Kaitlyn Townsend and alternate Demi Mitchek received a silver medal. The team had to take a 25 question test over parliamentary procedure and then conduct a 20 minute meeting demonstrating required motion and procedure.

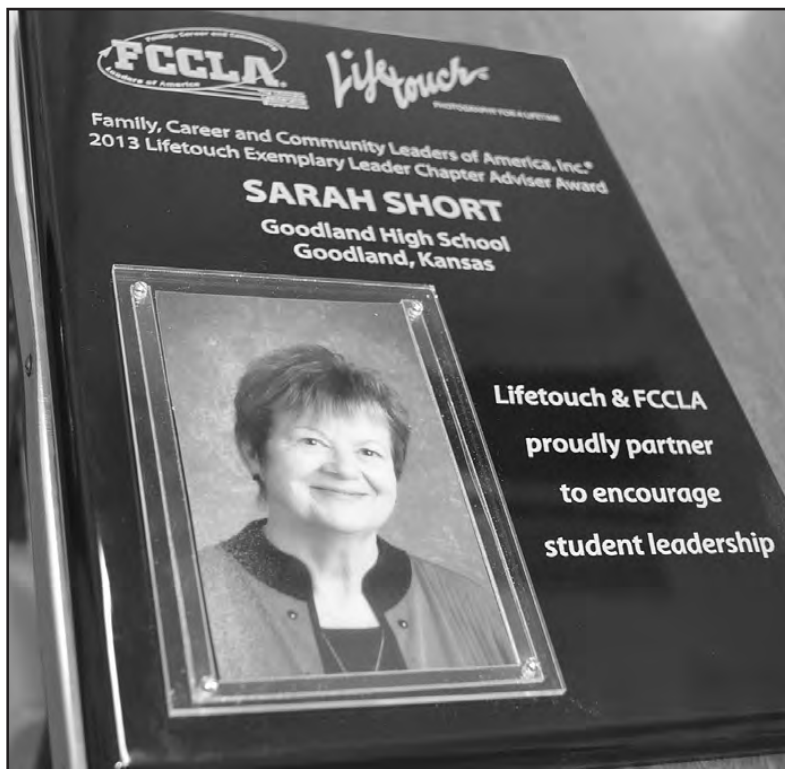
Advisor of the Grant Junior High chapter Sarah Short received the awards of Advisor of the Year, Advisor and Mentor Award and Lifetouch Exemplary Leader Award. The advisor and mentor award recognized her effort to train new Family, Career and Community Leader advisors. She had to achieve master advisor recognition, devote at least two years to new advisor assistance, assume adult leadership role in the organization, conduct advisor workshops, attend training workshop and use nation and state organization resources.

The meeting held from July 7 to 11 had the student-originated theme of "Discover Your Voice." They examined and discussed issues include family, school and community violence prevention, physical as well as financial fitness, future career exploration and countless community service projects.

Over 3600 students competed in Students Taking Action with Recognition which are competitive events that build proficiency and achievement in leadership and job related skills.

Also accompanying the group were Dick Short, Sara Townsend and Mellanie Goodwin.

Family, Career and Community Leaders of America has over 5,500 chapter and 200,000 member from 50 state associations, Puerto Rico and the Virgin Islands.

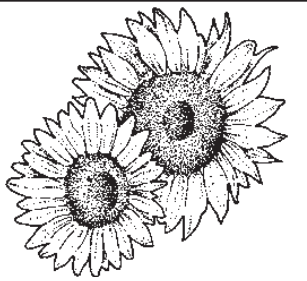


Pictured is the plaque that Sarah Short received from the Family, Career and Community Leaders of America conference. She also received the Advisor of the Year, Advisor and Mentor Award and the Lifetouch Exemplary Leader Award. Sarah Short retired from the Goodland School District. She taught family and consumer science and was the advisor for the Family, Career and Community Leaders of America clubs. Photo by Pat Schiefen The Goodland Star-News

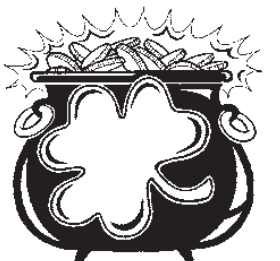


**Medical Arts Pharmacy**

202 Willow Rd,  
Goodland, Kan. 67735  
785-890-5111



6845 Rd. 17 • Goodland, Kan.  
(785) 899-6515



**Garcia's**  
Home Furnishings & Appliance

1114 Main  
Goodland, Kan.  
(785) 899-5123

**YOUR AD**

could be here!  
Call Angela at 899-2338

The Goodland Star-News



**L & W**

Andrist  
**Insurance Agency, LLC**

Linda & Walt Linthacum - Owners/Agents  
102 E. 8th (8th & Main)  
Goodland, KS 67735  
(785) 890-5678  
800-892-4245



**Culligan**

better water. pure and simple.®

904 Main Street, Goodland  
(785) 899-2352



The Goodland Star-News

1205 Main  
Goodland, Kan.  
(785) 899-2338





All Central Time, for Kansas Mountain Time Stations subtract an hour

# TV CHANNEL GUIDE

Tuesday Evening August 27, 2013										
	7:00	7:30	8:00	8:30	9:00	9:30	10:00	10:30	11:00	11:30
ABC	Extreme Weight Loss				Body of Proof	Local	Jimmy Kimmel Live	Nightline		
CBS	NCIS		NCIS: Los Angeles		Person of Interest	Local	Late Show Letterman	Ferguson		
NBC	Hollywood Game Night		America's Got Talent			Local	Tonight Show w/Leno	J. Fallon		
FOX	So You Think					Local				
Cable Channels										
A & E	Storage	Storage	Barter Kings		Barter Kings		Storage Wars			Local
AMC	The Mummy				The Mummy					Local
ANIM	Wildman	Wildman	Wildman	Wildman	Wildman	Wildman	Wildman	Wildman	Wildman	Local
BET	I Can Do	The Game	The Game	The Game	Husbands	Husbands	Wendy Williams Show	Prchr Kid		Local
BRAVO	Interior Therapy	Interior Therapy	Interior Therapy	Interior Therapy	Million Dollar LA	Property	Interior Therapy	Real		Local
CMT	Local	Local	Reba	Reba	Monster Garage		Monster Garage	Cops Rel.		Local
CNN	Piers Morgan Live	Anderson Cooper 360	E. B. OutFront		Piers Morgan Live		Anderson	Local		Local
COMEDY	Tosh.0	Tosh.0	The Jesel		The Comedy Central Roast		Drunk History			Local
DISC	Local	Local	Amish Mafia		Amish Mafia		Amish Mafia	Tickle	Porter Ri	Local
DISN	Local	Local	Good Luck Austin		Jessie	Fish Hook	Gravity	Gravity		Local
E!	El News	Vanessa	Total Divas		Total Divas		Chelsea	El News	Chelsea	Local
ESPN	World Series		World Series		SportsCenter		SportsCenter	SportCtr		Local
ESPN2	U.S. Open Ten.				Olbermann		Olbermann	Baseball		Local
FAM	Twisted		The Vineyard		The 700 Club		The Vineyard	Insanity!		Local
FOOD	Local	Local	Chopped		Chopped		Chopped			Local
FX	The Proposal				The Proposal					Local
HGTV	Property	Property	Property	Property	Hunters	Hunt Intl	Income Property		Property	Local

## AmericanProfile // CELEBRATING THE AMERICAN SPIRIT //

Wednesday Evening August 28, 2013										
	7:00	7:30	8:00	8:30	9:00	9:30	10:00	10:30	11:00	11:30
ABC	Middle	Middle	Mod Fam	Neighbors	ABC's The Lookout	Local	Jimmy Kimmel Live	Nightline		
CBS	Big Brother		Criminal Minds		CSI: Crime Scene	Local	Late Show Letterman	Ferguson		
NBC	America's Got Talent		America's Got Talent			Local	Tonight Show w/Leno	J. Fallon		
FOX	MasterChef					Local				
Cable Channels										
A & E	Duck D.	Duck D.	Duck D.	Dads	Dads	Dads	Duck D.	Duck Dynasty		Local
AMC	The Mummy Returns				The Mummy Returns					Local
ANIM	Gator Boys		Gator Boys		Gator Boys		Gator Boys	Gator Boy		Local
BET	Scandal		Scandal		Sunday Best		Wendy Williams Show	Tyson		Local
BRAVO	Million Dollar LA		Million Dollar LA		Top Chef Masters		Million Dollar LA	Top Chef Masters		Local
CMT	Local	Local	Reba	Reba	Wild Hogs			Fat Cops		Local
CNN	Piers Morgan Live	Anderson Cooper 360	E. B. OutFront		Piers Morgan Live		Anderson	Local		Local
COMEDY	South Pk	South Pk	Futurama		The Comedy Central Roast		Futurama			Local
DISC	Local	Local	Jungle Gold		Jungle Gold		Gold Rush	Patrick Dempsey		Local
DISN	Local	Local	Good Luck Austin		Austin	Austin	Hannah Montana			Local
E!	Who Wore	Who Wore	Kardashian		The Soup	The Soup	Chelsea	El News		Local
ESPN	MLB Baseball		Baseball Tonight		SportsCenter		SportsCenter	SportCtr		Local
ESPN2	U.S. Open Ten.				Olbermann		Olbermann	Baseball		Local
FAM	Spell-Mageddon		Melissa	Daddy	The 700 Club		Prince	Prince	Sexy	Local
FOOD	Local	Local	Restaurant: Im.		Restaurant: Im.		Restaurant: Im.	Mystery D	Mystery D	Local
FX	Iron Man				The Bridge		The Bridge			Local
HGTV	Love It or List It		Property Brothers		Hunters	Hunt Intl	Brother vs. Brother	Property Brothers		Local
HIST	Larry the Cable Guy		Top Shot All-Stars		Hatfields	Hatfields	Pawn	Pawn Stars		Local
LIFE	Hidden Away		Gone Missing		Hidden Away		Hidden Away			Local
MTV	The Challenge		The Challenge		The Challenge		Catfish: The TV Show	Teen Mom		Local
NICK	Local	Local	Sam & Cat	Victoriou	Full H'se	Full H'se	Full H'se	Full H'se	Full H'se	Local
SCI	Paranormal Witness		Joe Rogan Questions		Paranormal Witness		Joe Rogan Questions	Beyond		Local
SPIKE	Cops	Cops	Cops	Cops	Jail	Jail	Jail	Jail		Local
TBS	Big Bang	Big Bang	Big Bang	Big Bang	Conan		Office	Conan		Local
TCM	The Music Man				Carousel					Local
TLC	Local	Local	Extreme Cougar Wives		Honey	Honey	Honey	Cheer Perfection		Local
TNT	Castle		Castle		The Mentalist		The Mentalist	Mentalist		Local
TOON	King/Hill	King/Hill	Amer. Dad	Amer. Dad	Fam. Guy	Fam. Guy	Chicken	Aqua Teen	Squid	Local
TRAV	RIDE	RIDE	Bikinis	Bikinis	Horneytown	Magic Man	RIDE	RIDE	Bikinis	Local
USA	Raymond	Raymond	Cleveland	The Exes	Soul Man	King	King	Cleveland		Local
WGN	Royal Pains		NCIS		Suits		Royal Pains			Local
VH1	Greatest Songs		Tough Love: Co-Ed		Tough Love: Co-Ed		Hollywood Exes	How Stell		Local
WGN	Rules	Rules	WGN News at Nine		Funniest Home Videos		Rules	Rules	30 Rock	Local
Premium Channels										
HBO	Local	Local	Hard	Clear History			The Newsroom	REAL Sports Gumbel		
MAX	Local	Local	Strike Back		Strike Back		Man-Iron Fists			
SHOW	Local	Local	Step Up	Ray Donovan	Access		Richard Pryor: Omit the Logic	Access		

## Thursday Evening August 29, 2013

	7:00	7:30	8:00	8:30	9:00	9:30	10:00	10:30	11:00	11:30
ABC	Motive				Rookie Blue	Local	Jimmy Kimmel Live	Nightline		
CBS	Two Men	Two Men	Big Brother		Elementary	Local	Late Show Letterman	Ferguson		
NBC	America's Got Talent		Hollywood Game Night		Hollywood Game Night	Local	Tonight Show w/Leno	J. Fallon		
FOX	Glee		New Girl	Mindy		Local				
Cable Channels										
A & E	After the First 48		Panic 9-1-1		Panic 9-1-1		The Pitch			Local
AMC	National Lamp.		Owner	Owner	The Pitch		Owner	Owner	National	Local
ANIM	Swamp'd!	Swamp'd!	Swamp'd!	Swamp'd!	Swamp'd!	Swamp'd!	Swamp'd!	Swamp'd!		Local
BET	Big Momma's House		Getting Played		The Wendy Williams Show					Local
BRAVO	Matchmaker		Matchmaker		Eat, Drink, Love		Housewives/OC	Real Housewives		Local
CMT	Local	Local	Reba	Reba	Extreme Makeover		Extreme Makeover	Extreme Makeover		Local
CNN	Piers Morgan Live	Anderson Cooper 360	E. B. OutFront		Piers Morgan Live		Anderson	Local		Local
COMEDY	Sunny	Sunny	Tosh.0	Tosh.0	The Comedy Central Roast		South Park			Local
DISC	Local	Local	Amish Mafia		Amish Mafia		Airplane Repo	Airplane Repo		Local
DISN	Local	Local	Jessie	Austin	ANT Farm	Phineas and Ferb	Shake It	Good Luck	Austin	Local
E!	Total Divas		Missie Awards		Bikinis		Chelsea	El News	Chelsea	Local
ESPN	College Football				SportsCenter		SportsCenter	SportCtr		Local
ESPN2	U.S. Open Ten.				Olbermann		Olbermann	Baseball		Local
FAM	National Treasure				Prince	Prince	Prince	Insanity!		Local
FOOD	Local	Local	Chopped		Cutthroat Kitchen		Chopped	Anne Burrell		Local
FX	Iron Man 2				Wilfred	Wilfred	Iron Man			Local
HGTV	House Hunters Reno		Flip or F	Flip or F	Hunters	Hunt Intl	Hunters	Hunt Intl	Flip or F	Local
HIST	Pawn	Pawn	Hatfields		Top Gear		Pawn	Pawn Stars		Local
LIFE	Project Runway		Supermarket		Project Runway		Project Runway			Local
MTV	Ridic.	Ridic.	Ridic.		Ridic.	Ridic.	Ridic.	2013 VMAs		Local
NICK	Local	Local	Swindle		Full H'se	Full H'se	Full H'se	The Nanny		Local
SCI	Age of Dinosaurs				Land of the Lost		Land of the Lost			Local
SPIKE	IMPACT Wrestling				Fight Master		Police Videos	Police		Local
TBS	Big Bang	Big Bang	Big Bang	Big Bang	Conan		Office	Conan		Local
TCM	Smart	Mystery of the Wax Museum			I Am a Fugitive From a Gang		Gold Diggers of 1935			Local
TLC	Local	Local	Say Yes	Say Yes	Say Yes	Say Yes	Four Weddings: Unveiled	Four Weddings		Local
TNT	Hawaii Five-0		Hawaii Five-0		Perception		CSI: NY			Local
TOON	King/Hill	King/Hill	Amer. Dad	Amer. Dad	Fam. Guy	Fam. Guy	Children	Newsread	Squid	Local
TRAV	Mysteries-Museum		Mysteries-Museum		Mysteries-Museum		Mysteries-Museum			Local
TV LAND	Everybody-Raymond		Raymond	Raymond	The King of Queens		The King of Queens	King		Local
USA	Law & Order: SVU		Law & Order: SVU		Law & Order: SVU		NCIS			Local
VH1	Basketball Wives		Basketball Wives		Poetic Justice					Local
WGN	How I Met	How I Met	WGN News at Nine		Funniest Home Videos		Rules	Rules	30 Rock	Local
Premium Channels										
HBO	Local	Local	Ready to Rumble		The Newsroom		Anna Karenina			
MAX	Local	Local	Chasing Mavericks		Strike Back		Strike Back		American Reunion	
SHOW	Local	Local	Woman	People Like Us			Sexy Baby			

## Friday Evening August 30, 2013

	7:00	7:30	8:00	8:30	9:00	9:30	10:00	10:30	11:00	11:30
ABC	Last Man	Neighbors	Shark Tank		20/20	Local	Jimmy Kimmel Live	Nightline		
CBS	Undercover Boss		Hawaii Five-0		Blue Bloods	Local	Late Show Letterman	Ferguson		
NBC	Betty	Betty	Dateline NBC			Local	Tonight Show w/Leno	J. Fallon		
FOX	Bones		The Following			Local				
Cable Channels										
A & E	Storage	Storage	Storage	Storage	Dads	Dads	Storage Wars			Local
AMC	The Green Mile				Mission to Mars					Local
ANIM	Handfishin'		Handfishin'		Handfishin'		Handfishin'	Fishin'		Local
BET	Are We Done Yet?		National Security		The Wendy Williams Show					Local
BRAVO	Scary Movie				Scary Movie			Panic Room		Local
CMT	Local	Local	Reba	Reba	Mrs. Doubtfire					Local
CNN	Piers Morgan Live	Anderson Cooper 360	Great Expectations		Stroumbouloupoulos		Anderson Cooper 360	Great		Local
COMEDY	National-Van Wilder		Tosh.0	Tosh.0	J. Oliver	I Love You, Man				Local
DISC	Local	Local	Gold Rush		Gold Rush - The Dirt		Gold Rush	Alaskan Steel Men		Local
DISN	Local	Local	Good Luck Austin		Teen Beach Movie		Dog	Good Luck		Local
E!	Music Awards		Fashion Police		Fashion Police		Chelsea	El News	Chelsea	Local
ESPN	College Football				SportsCenter		SportsCenter	SportCtr		Local
ESPN2	U.S. Open Ten.				Olbermann		Olbermann	Baseball		Local
FAM	Twister		The 700 Club		Prince	Prince	Prince	Paid		Local
FOOD	Local	Local	Restaurant: Im.		Diners	Diners	Diners	Diners	Diners	Local
FX	Alvin-Chipmunk		Chipmunks-Squeakquel		White Chicks					Local
HGTV	Amazing Water Homes		Cool Pools		Hunters	Hunt Intl	Hunt Intl	Hunt Intl	Cool Pools	Local

## AmericanProfile // CELEBRATING THE AMERICAN SPIRIT //

HIST	American	American	American	American	American	American	American Restoration			Local
LIFE	Hoarders		Hoarders		Hoarders		Hoarders			Local
MTV	Ridic.	Ridic.	Ridic.	Ridic.	Ridic.	Ridic.	Ridic.	Ridic.		Local
NICK	Local	Local	Turtles	Turtles	Rabbids	Sanjay	Full H'se	Full H'se	The Nanny	Local
SCI	WWE SmackDown!		Continuum		Haven		Continuum	Cosplay		Local
SPIKE	Con Air	Con Air			Kick-Ass					Local
TBS	Shrek		Shrek the Third		Are We Th	Are We Th	Are We Th			Local
TCM	Paths of Glory		Act of Love							Local
TLC	Local	Local	What Not to Wear		Say Yes	Say Yes	Say Yes	Say Yes	What Not to Wear	Local
TNT										



**WANTED**

**CELEBRITY POWER CHAIR** WITH RECLINING SEAT. Working or not. JET-3 with joystick control preferred. Call (785) 890-2585, leave a message. -8-23-8-27-

**Custom haying service.** Now baling failed corn and milo. Can also do CRP cane or alfalfa. Reasonable rates, turnkey job, can travel. Call Tadd Neitzel at (785) 332-7004. -8-13-9-13-

**Want to buy John Deere diesel engines,** running or not. (785) 263-6275. -8-6-9-6-

**Junk batteries,** non-ferrous metals and iron. Darrel Bowen. Phone 785-899-2578. -tfn-

**NOTICE**

**American Profile Cookbooks Available!** Stop by The Goodland Star-News. -tfn-

**Advertising Deadlines (box and line ads):** Tuesday edition (Friday at noon). Friday edition (Wednesday at noon). Please check your ad the first time it runs. If you find an error, please call us at (785) 899-2338 so it can be corrected, since we will not be responsible for errors after that first day. Thank you!

The Goodland Star-News.

**HELP WANTED**

**Elevator workers.** Archer Daniels Midland Company (ADM), a world leader in agricultural processing, is currently seeking candidates for seasonal positions as elevator workers at our Brewster, KS location. Elevator workers will unload grain, perform clean-up work, perform some maintenance, and assist in other areas of grain handling. Positions require the flexibility to work overtime and weekends. Successful completions of a pre-employment drug screen, physical and background check is required. Please apply online at [www.adm.com/jobs](http://www.adm.com/jobs). ADM is a Equal Opportunity/Affirmative Action Employer. -8-23-9-3-

**CNA's Wanted in Northwest Kansas.** ResCare HomeCare is looking for CNA's or Home Health Aides that are looking for part time, extra cash with flexible hours. We provide supports in the home to assist the client to remain in their home. Requirements- CNA License; enjoy working with people; and we will train the rest!. Apply online or call Rachel 785-728-7198 [www.rescare.com](http://www.rescare.com) select "careers". E.O.E.

M/F/D/V. -8-23-9-2-

**Immediate Openings.** Do you enjoy working with people? We require no experience and will train you. Full-time openings in Day Services and Residential; hours vary. You can apply online; call or stop by. ResCare Golden West, 108 Aspen Rd. Goodland, KS . 785-899-2322. [www.rescare.com](http://www.rescare.com) select "careers". E.O.E. M/F/D/V. -8-23-9-2-

**PSI Transport is always looking** for good company livestock and grain haulers as well as shop mechanics. Competitive pay, life/health/dental benefits and bonus program available. EOE. (785) 675-3477. -6-10-TFN

**FOR SALE**

**1994 F-150** former gas utility pickup. 150,000 miles, 6 cylinder, auto. Everything works \$2100. Call 785-675-3640 or 785-657-1713, Hoxie.-8-21-8-28-

**Steel Buildings big or small** save up to 50% for best deal

with contract construction to complete. Source#18X. 800-964-8335. -8-16-8-27-

**FIREWOOD FOR SALE** in Goodland. Call (785) 890-7224. -12-11-tfn-

**FOR RENT**

**Accepting applications for Bagger/Warehouseman** for agriculture business. Experience in grain elevator helpful. For interview call Sunrise Staffing Services, LLC @ (785) 628-6877 apply on line at [sunrisesaffingservices.com](http://sunrisesaffingservices.com) or pick up application at the SunOpta Plant, 1701 Industrial Loop, Goodland. -8-23-9-2-

**Nice 2 bed, 1 1/2 bath home** in Goodland. Central heat and air, garage, \$600. Call (303) 941-2369. -8-16-8-27-

**Houses and apartments** in Goodland, KS. All sizes. Call for details. (785) 890-6538. -6-12-tfn

**Houses and apartments.** Cole Real Estate. 785-899-2683. -tfn-

**SERVICES**

**Beckman Fencing. Need a fence?** We can build it! Barbwire, pipe corrals, continuous panels, chain link, privacy fence...also any concrete flatwork. Contact Jared at (785) 672-7607. -7-26-8-26-

**Burlington-Goodland area.** Residential overhead door service and repair, 20 years experience. Call Gary at (719) 350-0705. -7-12-tfn

**CAT'S TNT for jewelry,** vinyl!

graphic designs, massages, quilting and more! Stop by 1018 Main, Goodland - 3-23-tfn

**FOR RENT**

**Westside Apartments on Cattletrail has (2) 3 bedroom units for rent.** These units come furnished with all of the kitchen appliances and a washer/dryer. Please contact NW Kansas Housing at (785) 421-2151 or [nwkpdc@ruraltel.net](mailto:nwkpdc@ruraltel.net) for more information.

**HELP WANTED**

**Hiring for Maintenance, plant operator, Equipment operator, truck driver and a Feed Sales.** These are full-time positions with competitive wages and benefits. Applications available online at: [www.wpellc.com](http://www.wpellc.com) or you can pick up an application at: **3022 County Rd 18 Oakley, KS 67748 Phone: 785-672-8810**



**kansas classifieds**

**For Sale**  
**BACK TO SCHOOL PIANO SALE!** Over 120 Grand, Vertical, and Digital Pianos ON SALE, from \$488! Hurry sale ends Sept 2nd, Mid-America Piano, 1-800-950-3774 Piano4u.com

**Help Wanted**  
Anthony, Kansas is seeking Water/Wastewater Operator. High School Diploma/GED and valid driver's license required. Applications and complete job description: [www.anthonykansas.org](http://www.anthonykansas.org). 620-842-5434. EOE. Open until filled.

**Help Wanted**  
**BRANSON MISSOURI** Foreclosures: Maintenance Free, Great Location, Perfect Second Home!! 1, 2, 3 Bedroom Condos Off Hwy. 76. Starting \$69,500. For Info Packet; 417-243-2210; [dfast@bransonUSArealty.com](mailto:dfast@bransonUSArealty.com)

**Help Wanted**  
Heavy Equipment Operator Career! 3 Week Hands On Training School. Bulldozers, Backhoes, Excavators. National Certifications. Lifetime Job Placement Assistance. VA Benefits Eligible! 1-866-362-

6497  
**Help Wanted**  
"Partners In Excellence" OTR Drivers APU Equipped Pre-Pass EZ-pass passenger policy. 2012 & Newer equipment. 100% NO touch. Butler Transport 1-800-528-7825

**Help Wanted/Truck Driver**  
Drivers: CDL-A. Train and work for us! Professional, focused CDL training available. Choose Company Driver, Owner Operator, Lease Operator or Lease Trainer. (877) 369-7885 [www.CentralTruckingDrivingJobs.com](http://www.CentralTruckingDrivingJobs.com)

**Help Wanted/Truck Driver**  
DRIVERS: Transport America has Dedicated and Regional openings! Variety of home time options; good miles & earnings. Enjoy Transport America's great driver experience! TAdriers.com or 866-204-0648.

**Help Wanted/Truck Driver**  
Exp. Flatbed Drivers: Regional opportunities now open with plenty of freight & great pay! 800-277-0212 or [primeinc.com](http://primeinc.com)

**Dental Assistant/Front Office Duties**

Burlington Family Dentistry is expanding and looking for a friendly, reliable and hardworking individual to join our team! Interest or experience within the medical or dental field preferred, however no experience necessary. Drop off resume and apply within- 340 14th Street (Main Street) in Burlington.



**CHIEF OF POLICE**

The City of Wathena, Kansas (pop. 1348) is accepting applications for the full time position of Chief of Police. The Chief of Police is responsible for planning, organizing, and directing all activities of the Police Department. A college education is preferred but not required. Training and course work in criminal justice, law enforcement, or a closely related field is preferred. Work experience should include five years in police work and two years in a supervisory position. Possession of, or ability to obtain appropriate certification as a police officer in the State of Kansas. Applicant must pass background check, and psychological evaluation. Salary range DOQ. City benefit package includes health, dental, life insurance, vacation, holidays, and sick leave. Job requires living in the City limits. Applications will be accepted until position is filled. Send resume or applications are available at the City Hall in Wathena, 206 St. Joseph Street, P.O. Box 27, Wathena, Kansas 66090. 1-785-989-4711. EOE.

**NOW HIRING!**

**Front Desk Clerks; Cooks; Housekeeping; Servers**  
Flexible hours. Full and part-time positions available. Great benefits including insurance, vacation pay & 401K. Top pay. Certification bonus. Monthly bonus program, Employee discount at Penny's Diner. Excellent promotional opportunities, Dynamic training program. APPLY TODAY! 801 N. Highway 27. Front Desk Clerks/Van Drivers must have good driving record and be able to pass a drug test. (Junction of Hwy K-27 @ US-40) Sharon Springs, KS Phone: (785) 852-4664. (785) 852-4665-fax. [sharonsprings@mail.oaktreeinn.com](mailto:sharonsprings@mail.oaktreeinn.com)



**City Superintendent**

The City of Wathena, Kansas, is seeking a working City Superintendent who will supervise four full-time employees in Street/Utility Work. Knowledge for all aspects of city operations such as electric distribution, water, wastewater, and street maintenance are desirable. Electrical distribution background is definitely required. This position receives administrative direction from the mayor and a five member council. Requirements: Class 1 Water Supply System Operator and Class 1 Wastewater Treatment Facility System Operator or the ability to obtain certifications within twelve months of hiring. Valid driver's licenses required. Strong communication skills and ability to work with the public are an integral part of this position. Salary is based on qualifications and experience. Benefits include KPERS, health & dental insurance, vacation, and sick time. Accepting only qualified applicants. Applications will be accepted until position is filled. Send resume or applications are available at the City Hall in Wathena, 206 St. Joseph Street P.O. Box 27, Wathena, KS 66090. 785-989-4711. EOE.

**Mosaic is searching for Community Relations Managers in the following cities:**  
\*\*Winfield, KS.\*\* \*\*Garden City, KS.\*\* \*\*Liberal, KS.\*\* \*\*Ellsworth, KS.\*\*  
Mosaic, a not for profit organization that provides a life of possibilities for people with intellectual disabilities, is now seeking a hands on, mission driven go-getter with excellent people and leadership skills to serve as the Community Relations Manager to build community support and raise friends and funds within our Winfield, Garden City and Liberal Kansas locations.

**The Community Relations Manager's job duties consist of:**  
\* Develop and execute a comprehensive community relations and donor development plan following an already established model with proven success.  
\* Enhance relationships for the organization and gain sustainable financial support.  
\* Friend and raising, public relations, and marketing.  
\* Building lasting community relationships.  
\* Recruitment and management of volunteers to achieve measurable outcomes.

**Successful applicants will have the following:**  
\* Bachelor's Degree in marketing, public relations, communications or a related field required.  
\* Minimum of three years experience in a similar position or position with transferable skills.  
\* Previous experience with volunteer management is helpful.  
\* Ability to multitask and work effectively in a fast paced environment.  
\* Computer savvy.  
\* Exemplary public speaking and persuasion skills.

**Mosaic offers competitive wages and employee paid health insurance.**  
The position will require residence within a commutable distance to Winfield, or Garden City or Liberal Kansas.

Due to the anticipated response rate, please submit the following 3 items to [jill.falsh@mosaicinfo.org](mailto:jill.falsh@mosaicinfo.org)  
1. In subject line of email, put city of interest.  
2. Resume, including dates of employment AND salary history.  
3. Cover letter.  
We will not be able to review submissions without these 3 items.

**Time for a New Career?**

The Goodland Star-News is looking for a **FULL TIME ADVERTISING EXECUTIVE** to join our team selling advertising for Nor'West Newspapers. Work week is 40 hours. Computer skills are helpful but not required. Must have good communication skills, excellent customer service skills with attention to detail, and enjoy a fast-paced atmosphere.

Send a resume to:  
**Kevin Bottrell, Editor,**  
1205 Main, Goodland, KS 67735,  
or apply in person. No calls please.

The Goodland Star-News  
1205 Main, Goodland, KS 67735

**Sponsored by**  
**The Goodland Star-News**  
1205 Main  
Goodland, Kan. 67735  
899-2338

**Sponsored by**  
**The Goodland Star-News**  
1205 Main  
Goodland, Kan. 67735  
899-2338

8	2	4	3	9	1	6	5	7
5	1	3	6	7	2	8	4	9
9	7	6	8	4	5	1	3	2
3	5	8	7	6	9	2	1	4
2	9	7	4	1	8	3	6	5
4	6	1	5	2	3	7	9	8
6	4	2	1	5	7	9	8	3
1	3	9	2	8	4	5	7	6
7	8	5	9	3	6	4	2	1

Use Your Head

C	O	T	E	S	A	S	P	I	C	T	A	P
A	V	I	L	L	A	W	A	L	D	O	A	V
V	A	N	I	L	L	A	B	E	A	N	K	I
S	L	V	T	O	Y	E	D	F	L	E	S	H
H	A	L	L	A	I	N	G	R	A	I	N	
B	U	I	L	D	I	N	G	B	L	O	C	K
D	U	R	E	R	A	I	O	T	T	O	E	
E	T	A	S	O	M	I	T	S	O	I	L	I
S	A	T	W	O	O	S	I	N	C	A	S	
C	H	I	C	K	E	N	N	O	O	D	L	E
S	A	N	D	H	E	Y						
H	E	L	L	I	O	S	A	U	N	A	M	A
E	V	A	C	A	P	I	T	O	L	D	O	M
R	E	V	K	L	I	N	E	L	E	M	O	N
E	R	A	S	E	C	T	S	Y	E	A	R	S





# Mavericks rack up another win Saturday

The Northwest Kansas men's soccer team got its second win of the year and the first of the regular season against Northeastern Junior College from Sterling, Co., at home on Saturday. The Mavericks won 5-1, giving them a 1-0 record. The team will go on a road trip over the next two weeks, playing Trinidad State Junior College and Pratt Community College on Tuesday and Thursday in Trinidad. From there they will head to Rock Springs, Wyo., to play Western Wyoming Community College and Westminster JV on Friday and Saturday. On Sunday the Mavericks will play Metro State University in Denver. The final game of the road trip will be a rematch with Northeastern in Sterling. The Mavericks return home for a game against Western Nebraska Community College at 4 p.m. Saturday, Sept. 7. There will be a tail gate party at 2 p.m. that day with free food and music and a free t-shirt for the first hundred people.

Photos by Pat Schiefen/The Goodland Star-News

## Sports events coming up

The Goodland High School football and cross country teams will hold their Sports Drink Scrimmage at 6:15 p.m. Friday at Cowboy Stadium. Price of admission is a sports drink for the teams to use throughout the year.

The volleyball team will hold its scrimmage at 6 p.m. next Tuesday at the Max Jones Fieldhouse.

### FUN BY THE NUMBERS

					2		6	
	8			2	3		4	
	3	2	6			7	5	
8	2	4			9	5	7	
	7	1		5			2	
5								
1		7		3	5	6	2	9
	9			6				3
			2			1		

Level: Beginner

Like puzzles? Then you'll love sudoku. This mind-bending puzzle will have you hooked from the moment you square off, so sharpen your pencil and put your sudoku savvy to the test!

**Here's How It Works:**

Sudoku puzzles are formatted as a 9x9 grid, broken down into nine 3x3 boxes. To solve a sudoku, the numbers 1 through 9 must fill each row, column and box. Each number can appear only once in each row, column and box. You can figure out the order in which the numbers will appear by using the numeric clues already provided in the boxes. The more numbers you name, the easier it gets to solve the puzzle!

### Crossword Puzzle

1	2	3	4	5	6	7	8	9	10	11			
12				13			14		15				
16				17				18					
	19						20						
				21	22	23		24					
	25	26					27			28	29	30	
31				32		33				34			
35					36			37			38		
39						40			41		42		
43					44			45		46			
				47				48					
49	50	51	52							53	54	55	
56							57	58	59		60		61
62						63					64		
65										66			67

- CLUES ACROSS**
- Feminist Lucretia
  - Lacrimal gland fluid
  - Airborne (abbr.)
  - Double-reed instrument
  - De Mille (dancer)
  - Burn plant: \_\_\_\_ vera
  - Represent by drawing
  - Roy Harold Scherer
  - Point that is one point N of due E
  - Causing vexation
  - Belonging to a thing
  - Leg joint
  - Suffragette Anthony
  - Form a sum
  - Point midway between E and SE
  - Convert a hide into leather
  - Radical derived from butane
  - Priest's liturgical vestment
  - Goat and camel hair fabric
  - Sticky
  - Talk
  - Committed information rate
  - Strong twisted cotton thread
  - 331/3 rpms
  - Honey (abbr.)
  - Founding Father Franklin
  - Frees from pain or worry
  - Tennis player Bjorn
  - Not inclined to speak
  - Shoulder blade
  - Express pleasure
  - One week before Easter
  - Attired
  - Chew the fat
  - Weighing device
  - Captain \_\_, British pirate
  - Tropical American cuckoo
  - Any place of bliss or delight
- CLUES DOWN**
- "Rounders" actress Gretchen
  - Off-Broadway theater award
  - Grave
  - Court game
  - Pitch
  - Sense of self-esteem
  - Mandela's party
  - Lights again
  - Likewise
  - Film set microphone pole
  - "Housewives" Leakes
  - A torn off strip
  - Promotions
  - A. Godfrey's instrument
  - Bill in a restaurant
  - Cozy
  - Knocking out
  - Polio vaccine developer
  - Numeral system
  - Former gold coin worth \$10
  - Swats
  - Flows back or recedes
  - Rotation speed indicator
  - Respect beliefs of others
  - Original matter
  - Cologne
  - Small round soft mass
  - Kisses noisily
  - Large passenger vehicle
  - Prevents harm to creatures
  - Songwriter Sammy
  - Jai \_\_, sport
  - Payment (abbr.)
  - Settled onto
  - Incline from vertical
  - Father
  - Brew
  - Strong desire
  - Insecticide

The crossword puzzle brought to you by:  
**The Goodland Star-News**  
1205 Main, Goodland, Kan. 67735  
(785) 899-2338

## School calendar for Aug. 28-Sept. 3

Goodland High School • Grant Junior High School  
West Elementary School • Central Elementary School

Wednesday: 7:30 AM-PLC

Friday: 6:15 PM-Football and Cross Country Sports Drink Scrimmage  
8 PM-Back to school dance

Monday: NO SCHOOL-LABOR DAY

Tuesday: 12 PM-Girls Varsity Golf at Cimarron

**Linda & Walt Linthacum**  
- Owners/Agents  
**L & W**  
Andrist  
**Insurance Agency, LLC**  
102 E. 8th (8th & Main), Goodland, KS  
(785) 890-5678 • 800-892-4245

**SHORT & SON INC.**  
SINCE 1934  
Goodland, KS 67735  
PHONE: (785) 899-2592  
Livestock & Machinery Hauling  
Bonded Livestock Dealers

**PS Crop Production Services**  
Highway 27, Goodland  
(785) 899-5601

We proudly support our area schools!  
**The Goodland Star-News**  
1205 Main, Goodland, KS 67735  
Phone: (785) 899-2338  
Email: star.news@nwkansan.com

**The INSURANCE AGENCY Inc.**  
1020 Main Goodland, KS  
(785) 899-5011  
Susan Doko Roxann Kling

**Culligan**  
better water. pure and simple.<sup>®</sup>  
• Drinking Systems  
• Water Softeners (Sales & Rentals)  
• Water Coolers • Salt Sales & Delivery  
904 Main Street, Goodland  
(785) 899-2352

**Hitchcock INC. of GOODLAND VALLEY**  
The Leader in Precision Irrigation  
328 W. Hwy. 24, Goodland, KS  
(785) 899-5628

**CASE III AGRICULTURE**  
AG POWER EQUIPMENT SUPPLY  
124 W. Highway 24, Goodland, KS  
(785) 899-3432

*Welcome back to school, Students!*