

**weather
report****65°**10 a.m.
Monday**Today**

• Sunset, 7:44 p.m.

Wednesday

• Sunrise, 5:59 a.m.

• Sunset, 7:43 p.m.

Midday Conditions

• Soil temperature 71 degrees

• Humidity 93 percent

• Sky cloudy but breaking up

• Winds calm

• Barometer 30.16 inches

and steady

• Record High today 103° (1936)

• Record Low today 41° (1920)

Last 24 Hours*

High Sunday 83°

Low Sunday 62°

Precipitation trace

This month 0.56

Year to date 8.41

Below normal 5.94 inches

The Topside Forecast

Today: Mostly cloudy with a 50 percent chance of scattered showers and thunderstorms, a high near 78, winds out of the southwest at 5 to 10 mph switching to the southeast and a low around 60. Wednesday: Mostly cloudy with a 40 percent chance of scattered showers and thunderstorms, a high near 77, winds out of the south at 5 to 10 mph and a low around 60.

Extended Forecast

Thursday: Mostly sunny with a 30 percent chance of showers and thunderstorms, a high near 81 and a low around 60. Friday: Sunny with a 20 percent chance of showers and thunderstorms.

**local
markets****10 a.m.**

Wheat — \$6.89 bushel

Posted county price — \$6.59

Corn — \$5.83 bushel

Posted county price — \$5.39

Milo — \$5.12 bushel

Soybeans — \$12.11 bushel

Posted county price — \$12.82

Millet — no bid

Sunflowers

Oil current crop — \$21.50 cwt.

Confection — no bid

Pinto beans — \$28

(Markets by Scoular Grain, Sun Opta,

Frontier Ag and 21st Century Bean.

These may not be closing figures.)

**inside
today**More local
news, views
from your
Goodland
Star-News**Bike races
at the track**

The I-70 Flat Track Motorcycle Races were held Friday at the Sherman County Speedway.

See Page 10

Cops to carry torch for Special Olympics

Goodland Police officers and Sherman County Sheriff's deputies will help carry the Special Olympics Kansas torch on a run through Goodland on Friday, Aug. 23.

The run will start at 9 a.m. at Golden West, then head east on Eighth Street to Main. It will go south on Main to 17th Street, then east to Cherry Avenue and on to the Van Gogh. When the run is finished — about 10 a.m. — there will be an ice cream social for Special Olympics Kansas athletes and the community.

Goodland Police Chief Cliff Couch said he was pleased to be approached by the Special Olympics Kansas, as the torch run was a big deal at his previous home in Florida.

"We're pretty excited," he said.

The Goodland run is part of a statewide Law Enforcement Torch Run that will carry the torch about 1,500 miles. So far this year, approximately 950 officers from over 88 agencies have carried the "Flame of Hope" throughout 29 counties in Kansas.

In northwest Kansas, officers will carry the torch in Plainville, Stockton, Hoxie, Atwood and Goodland from Aug. 21 to 23. The run is to create awareness of Special Olympics and the upcoming Northwest Kansas World's Largest Truck Convoy on Sept. 7.

The Special Olympics is encouraging everyone to step out and cheer the officers on and enjoy the excitement as the Special Olympics torch travels through northwest Kansas.

The Law Enforcement Torch Run began in Wichita in 1981 with six runners and has grown to an international program that involves thousands of Law Enforcement personnel. The torch run is the largest grassroots fundraiser and public awareness vehicle for Special Olympics. Officers volunteer hundreds of hours each year.



Carnival delights crowds

A little rain here and there didn't stop the crowds from turning out for the Sherman County Carnival. The home owned carnival includes rides such as the Jeep Ride for kids (above) and the Ferris Wheel.

Photos by Pat Schiefen
The Goodland Star-News



Commission approves budget, vehicle purchase

By Kevin Bottrellkbottrell@nwkansas.com

The Goodland City Commissioners approved their 2014 budget at the regular meeting Aug. 5.

The commission held a public hearing on the budget at the start of the meeting, and with no one from the public turning up to comment, they made the formal adoption motion. The commissioners made several changes to the

proposed budget at a budget session in July, including:

- Increased water and sewer transfers by \$7,500 each.

- Decreased funding for the library by \$2,000; repayment for the Wolak Building by \$1,500 in both 2013 and 2014; new equipment for the police department by \$1,000; the airport by \$1,000 in 2013 and \$2,000 in 2014; recreation by \$1,000 in 2013 and 2014;

and reduced funds in several other line items for street and alley work and administration.

The commission also approved an ordinance notifying the public that it would be taking in more property tax revenue this year. City Manager Doug Gerber said the state requires municipalities to pass this ordinance. While the tax levy itself has not increased, he said, an increase in valuation means the city will take in about \$30,000 more next year than

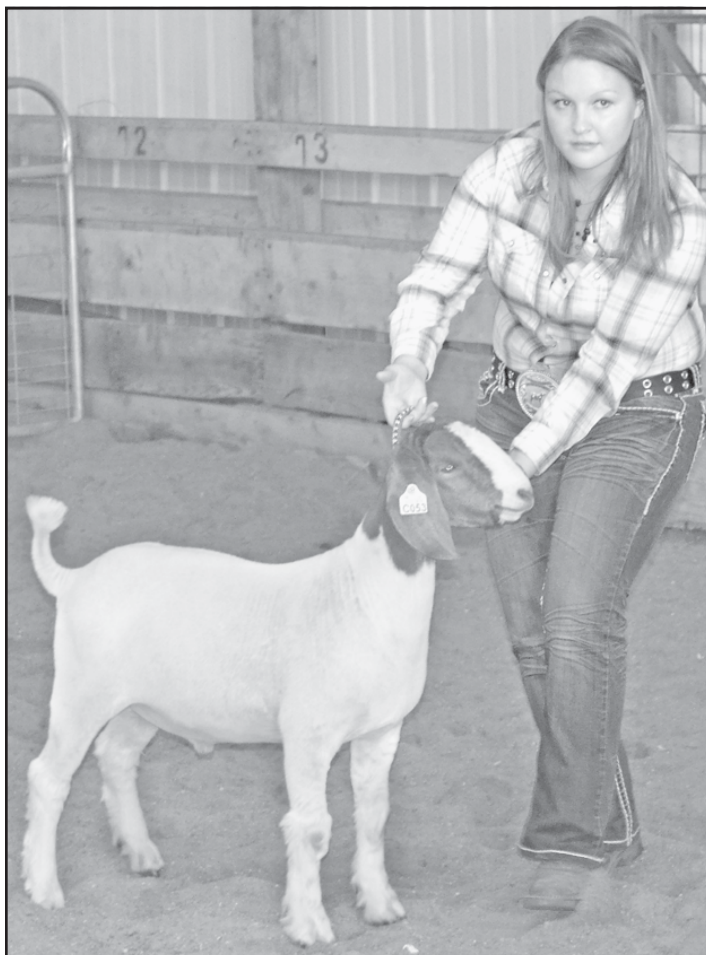
it did this year.

In other business, the commission:

- Authorized purchase of a 2012 Jeep Compass from Dan Brenner Ford. Gerber said Brenner put in four bid options, of which the Jeep was the second lowest bid. The city also approached Herl Chevrolet and Finley Motors, he said. Herl did not put in a bid and

See BUDGET, Page 5

Champions of champions



Lacie Cowan won Reserve Grand Champion in goats at the Tri-State Royal of Champions on Saturday. The event brings together champions from county fairs in eastern Colorado, northwest Kansas and southwest Nebraska.

Photo by Pat Schiefen/The Goodland Star-News

Nurses get trauma training

Several Goodland Regional Medical Center nurses and nurses from surrounding communities recently participated in a two-day trauma-care training class hosted by the hospital.

Hannah Bandy, Christy Pemberton, Karen Daise, Kathy Erickson and Esther Van Marel completed the Trauma Nurse Core Course. The course focuses on the optimal care of the trauma patient, which is best accomplished within a framework where all members of the trauma team use a systematic, standardized approach to the care of the injured patient. According to

the Emergency Nurses Association, trauma injury is the primary cause of death in persons under age 45.

"Emergency nurses are essential members of the trauma team," said Tina Whisnant, director of nurses at the hospital. "It is vital that we facilitate trauma-related, continuing education opportunities for the nurses who provide care to our trauma patients."

The purpose of the course is to present core-level knowledge, refine skills and build a firm foundation in trauma nursing to insure quality care of trauma patients.

Brewster 125th celebration to begin with 5k run on Aug. 24

By Heather Alwincolby.society@nwkansas.com

Brewster is inviting everyone to come celebrate the city's 125th anniversary with a weekend bash on Saturday and Sunday, Aug. 24 and 25.

Festivities will begin with a 5K and one-mile color fun run/walk at 8 a.m. Saturday and conclude with a street dance at 8 p.m. During the day, you'll find a chili cook-off, quilt show, antique car, tractor and motorcycle show, parade, talent show, pedal tractor races, buffalo bingo and more.

Carolyn Richards, owner of the Craft Peddler store downtown, will offer come-and-go classes from

10 a.m. to 2 p.m. for attendees to make Christmas ornaments honoring Brewster's anniversary. All proceeds will go to the Brewster Heritage Center.

On Sunday, the town will have a community church service and potluck dinner.

Brewster History

Platted in 1888, the city began as a station on the Rock Island Railroad. It was named for Robert Brewster, a railroad foreman who helped lay tracks through the area.

A few months after its platting, Brewster had a population of about 80 residents, mainly living in tents and sod houses.

Originally, the area post office

was located in Hastings, two miles north and a mile east of Brewster, but it was relocated to Brewster in 1888. Hastings businesses followed the post office by setting up shop in Brewster.

By 1909, the newspaper reported Brewster's population was 500, and the town had three general stores, a restaurant and lodging house, a hardware, implement and furniture store, a meat market, a grocery, bank, livery stable, men's clothing store, school and a hotel.

In 1920, Brewster was incorporated as a second-class city, enabling it to issue bonds to build

See BREWSTER, Page 5

student news

James Harrison of Sharon Springs graduated from Northeastern State University in Tahlequah, Okla., in the spring of 2013 with a Bachelor of Science - environmental, health and safety management degree.

genesis and salvation army

Genesis and Salvation Army are available year round to help those in need. Call (785) 890-2299 to speak to a volunteer.

activities

Tours of the 1907 Victorian House at 202 W. 13th are from **1 to 5 p.m. Wednesday through Monday.** Closed on Tuesday.

The **High Plains Museum**, 1717 Cherry Ave., is open from **9 a.m. to 5 p.m. Monday, Wednesday through Saturday and from 1 to 5 p.m. Sunday.** Closed Tuesdays.

The **Carnegie Arts Center** is open from **10 a.m. to 5 p.m. Tuesday through Saturday, 1 to 4 p.m. on Sunday and 1 to 6 p.m. on Monday** at 120 W. 12th. The center is always in need of hosts and hostesses on Sundays. New monthly exhibits and you are invited to visit the gift shop.

The **Goodland Public Library** is open from **10 a.m. to 7 p.m. Monday through Thursday** and from **10 a.m. to 5 p.m. Friday and Saturday.** For information call (785) 899-5461 or stop by the library.

Big Brothers/Big Sisters of Sherman County is seeking mentors and children to mentor. Call 890-3665.

The **Good Sam Family Support Council** meets at **7 p.m.** the second Thursday of every month at the Goodland Elks Lodge. Meetings are open to all interested people. For information call 890-3117 or 890-5936.

Breast Cancer Support Group meets at **5:30 p.m. the second Monday** of the month. Any woman with cancer is welcome. Call Norma at 890-6629 for more information.

The **Goodland Activities Center** has the daily activities. For information call 890-7242. Memberships options for everyone including day passes for \$5. Visit goodlandgac.com or stop by 808 Main. The hours are 5:30 a.m. to 8 p.m. on Monday through Thursday, Friday 5:30 a.m. to 6 p.m., Saturday 10 a.m. to 6 p.m. and Sunday 1 to 5 p.m. **Aerobics** are at 5:30 a.m. on Monday and Wednesday. **Insanity class** meets at 5:30 a.m. on Monday, Tuesday, Wednesday, Thursday, Friday and Saturday. **Taekwondo** with Wayne Luckert call for times and dates.

Weight Watchers meets at **5:30 p.m. for weigh in** and 6 p.m. for the meeting every **Tuesday** at the Harvest Evangelical Free Church, 521 E. Hwy. 24. For information call (785) 890-6423.

Goodland Alcoholics Anonymous, 1013 Center. If you drink alcohol, that's your business. If you want to stop, we can help. Call 821-3826 or 728-7491.

Goodland Al-Anon Family Group meets at **6 p.m. on Fridays**

the calendar

calendar

The Brewster Library and Museum will have this years **Annual Hot Dog/Watermelon Feed starting at 5 p.m. (Mountain Time) on Thursday, Aug. 29**, at Hunter Hall Park. Donations will go to the library and museum.

Goodland will have its first **5K/1 mile Glo Run on Saturday, Sept. 28.** Registration starts at 8 p.m. and the run is from 9 to 10 p.m. The night run begins at Chambers Park, 13th and Sherman, and will take runners on a tour of Goodland. Runners have the choice of taking a one mile route or a 5K route and are encouraged to wear their brightest gear. Registration is available online at cityofgoodland.org, goodlandgac.com and facebook.com/goodlandeventsteam. Pre-registration is \$15, registration the day of the run is \$20. Registrations make prior to Friday, Sept. 6, will include a t-shirt.

The **Goodland Farmers Market** is open **Saturdays from 8 a.m. to 11 a.m.** at Chambers Park. Selling are baked goods and fresh garden vegetables.

Commodity Distribution for Sherman County residents will be

at **1:30 p.m. on Monday** at First Christian Church, 8th and Arcade. Foods will include carrots, orange juice, peaches, potato flakes, apricot halves, beef stew, vegetable soup, fruit and nut mix and diced tomatoes. For information call Genesis (785) 890-2299.

Prairie Land Food distribution is 1 to 2 p.m. Saturday, Aug. 24, at Cat's TnT, 1018 Main, or at the Bernadine Johnson residence, located at 704 Walnut. For information call 899-2338, 821-1275, 890-2287, 821-1827 or 899-4278 or order online at www.prairie-elandfood.com.

A **Community dance** will be held from **on Friday, Aug. 23**, at Knights of Columbus Hall, 8th and Caldwell, Goodland. Admission is \$5. Will be alcohol free, family fun environment. Water and soda will be available with some finger foods. For information call (890) 2688.

senior menu

Today: Crispy chicken salad, Mandarin oranges, bread stick and bar cookies. **Wednesday:** Hamburger, potato rounds, green beans, bun and cantaloupe. **Thursday:** Smothered steak with gravy, broccoli salad, rosy pears,

bread and cake. **Friday:** Turkey ala king, mixed vegetables, five cup salad, biscuit and cook's choice complement.

school menu

Tuesday to Friday: School not in session. **Monday:** Breakfast - Aloha muffin square, whole grain cereal, grapes and milk. Lunch - Pig in a blanket, potato wedges, broccoli with cheese, fresh apple, gelatin with juice and milk. **Tuesday:** Breakfast - Star spangled pancakes, sausage links, fruit juice and milk. Lunch - Chicken wrap with lettuce and tomato, Spanish rice, cooked carrots, tropical fruit and milk. **Wednesday:** Breakfast - Whole what bagel with toppings, fresh orange and milk. Lunch - Spaghetti with meat sauce, spinach salad, grapes and milk. **Thursday:** Breakfast - Breakfast pita with salsa, has brown potatoes, kiwi and milk. Lunch - Taco salad with tortilla chips and salsa, refried beans, cinnamon puff, pineapple tidbits and milk. **Friday:** Breakfast - Breakfast lasagna, fruit cocktail and milk. Lunch - Chicken and noodles, mashed potatoes, green beans, orange wedges and milk.

obituaries

Joyce Dian Rew

Joyce Dian Bower Rew, 79, Derby, former Goodland resident died July 16, 2013.

She was born on Aug. 21, 1932, to Leo Bower and Beatrice Eversole Bower in Oakley. Leo Bower lived in Goodland and worked for the family businesses until his early death death in 1937. Mrs. Rew and her mother continued to live in Goodland. She graduated in 1950 from Sherman Community High School and then attended the University of Kansas at Lawrence living in the Miller Scholarship Hall.

In the summer of 1952 she and Victor M. Rew were married in Goodland. The couple them moved to the Kansas City area where he was employed. He died in 1959. She and her daughter returned to Goodland to live with Beatrice

Bower. While living in Goodland he taught business classes at Edson High School. Later they moved to the Wichita area settling in Derby.

Mrs. Rew worked for Boeing Corporation until retirement.

Preceding her in death were her husband and her parents.

Survivors include a daughter Vicki (Joe) Bryant of Derby.

Services were held on Thursday, July 18, 2013, at Smith Family Mortuary, 1415 N. Rock Road, Derby with burial in Newcomer Floral Hills Cemetery in Kansas City, Mo.

Visitation was Wednesday, July 17, 2013, at the funeral home.

Memorials may be sent to the Woodlawn United Methodist Church, 431 S. Woodlawn, Derby, Kan. 67037.

Betty Calkins

Betty Calkins, 73, Goodland resident, died Saturday, Aug. 10, 2013.

Services are pending with Bate-man Funeral Home, 211 E. 11th,

Goodland. A full obituary will follow.

birth

Elisabeth Joyce Brown

Elisabeth "Sissy" Joyce Brown was bon on Sunday, July 21, 2013, at New Beginnings Birthing Center at Goodland Regional Medical Center. She weighed 7 pounds, 3 ounces and was 19 inches long.

Her parents are Alan Brown and Chelsey Horney of Goodland. Her maternal grandparents are Brian Horney of Valley Falls and Julie Horney of Hope and her paternal grandparents are the late Toni "Sis" Sietz, Tom and Darlene Brown and Jim Herren, all of Valley Falls. Maternal great-grandparents are Rita and Ervin Elfman of Goodland and Janice Dean of Gardener and paternal great-grandparents are



Elisabeth Joyce Brown

Jyce Brown of Valley Falls and Joan Sietz of Atchison. Her great-great-grandmother is Margie Albers of Goodland.

Former resident to celebrate birthday

Donna Swager's mother Barbara Stoecklein will celebrate her 80th birthday on Tuesday, Aug. 13, 2013. Areception in her honor will be held from noon to 2:30 p.m. (Mountain Time) on Saturday, Aug. 17, at the Senior Progress Center, 165 Fike Park, Colby. The celebration will continue with Mass at 4:30 p.m. (Mountain Time) at Sacred Heart Church in Colby.

Mrs. Stoecklein was born Barbara Dinkel in Garden City, Kansas and was married for 28 years to Bernard Scheopner until his death. They lived in Goodland and Colby where they owned a Culligan Water Conditioning franchise. They have six children, 17 grandchildren and 15 great-grandchildren. Barbara later married Ted Stoecklein, who is also deceased. For many years, she owned a bed and breakfast in Emporia. She has been active in the Catholic Church for her entire life.



Barbara Stoecklein

Cards may be sent to her at 600 S. Mission Ridge Ave., Apt. No. 4, Colby, Kan. 67701.


Lunch Break. We're There.
The Goodland Star-News

Hot cars can become deadly for children

Hot summer days across the United States have contributed to at least 24 child deaths this year from heatstroke when children were left unattended in vehicles. Safe Kids Kansas, the Kansas Department of Transportation and the Kansas Department for Children and Families are joining together to observe National Heatstroke Prevention Day on July 31, and remind caregivers to never leave children alone in cars. As determined advocates in preventing childhood injury, these partners are working to together to educate parents and caregivers with tips to avoid these tragedies.

"As these tragedies continue to occur, Kansas partners are intensifying our efforts to get the message out that the inside of a vehicle is an extremely dangerous place for a child alone in hot weather," said Cherie Sage, Safe Kids Kansas. "Even on a mild day, the inside of a car can reach deadly temperatures within 10 minutes. This is a place no child should be

alone, and because children's bodies heat up three to five times faster than adults', they are much more susceptible to heatstroke."

Most people assume this would never happen to them, but in over half of all cases, the parent or caregiver "misremembered." That is, they believed their child had been dropped off and were safe with a care provider, unintentionally leaving them in the vehicle. It has happened to caring and responsible families from all walks of life. "Fatal Distraction," Gene Weingarten's Pulitzer Prize-winning article in The Washington Post at http://ow.ly/ldDwU, explains how these heartbreaking and preventable tragedies can happen to anyone.

"Heatstroke can happen more quickly than you might think," said Secretary Phyllis Gilmore, Kansas Department for Children and Families. "We don't want to see this happen to any family. That's why we are asking everyone to help protect kids by never leaving children alone in a

car, not even for a minute."

The National Highway Traffic Safety Administration's "Where's baby? Look before you lock" campaign urges parents and caregivers to take important precautions to prevent inadvertent incidents from occurring:

- Never leave a child unattended in a vehicle – even if the windows are partially open or the engine is running and the air conditioning is on.
- Make a habit of looking in the vehicle – front and back – before locking the door and walking away.
- Ask the childcare provider to call if the child does not show up for care as expected.
- Do things that serve as a reminder a child is in the vehicle, such as placing a purse or briefcase in the back seat to ensure no child is accidentally left in the vehicle, writing a note or using a stuffed animal placed in the driver's view to indicate a child is in the car seat.
- Teach children a vehicle is not

a play area. Lock vehicles and store keys out of a child's reach.

"If you see a child alone in a car, call 911," said Chris Bortz, Kansas Department of Transportation. "Emergency personnel are trained to respond to these situations. One call could save a life."

This information can be made available in alternative accessible formats upon request. For more information about obtaining an alternative format, you may contact Safe Kids Kansas at (785) 296-1223, or csage@kdheks.gov. Both speech/hearing disabled and hearing Kansans can access the Kansas Relay Center by calling toll-free (800) 766-3777. Callers should inform the relay operator of the number they wish to call and the type of call they are making direct, credit card, collect, person-to-person, etc.

National Bowling League meeting


Tuesday, August 27, 7:30 p.m. at Century Lanes in Burlington

Whether you have a team already put together or just wish to bowl, contact us. This is the league meeting. Leagues will begin in September! Please contact League Secretary Leroy Arends at (719) 346-7360 or Century Lanes at (719) 346-7921.

Century Lanes

210 4th Street, Burlington, CO 80807
Phone: (719) 346-7921



Enjoy a night at the movies!

TONIGHT 7 PM
Grown Ups 2 (PG-13)
Starts Friday 7 PM: Turbo 3D (PG)

Classifieds work!
899-2338

American Profile

Celebrating Hometown Life

See American Profile magazine in this week's issue of

Your sponsorship could be right here!

(available in local area only)

Brought to you by:

The Goodland Star-News

Call The Goodland Star-News today for more information!
(785) 899-2338



Just a part of the crowd that came to the Kansas State final of the Texaco Country Showdown Thursday night at the Northwest Kansas District Free Fair. Six acts competed for the opportunity to compete in the southwest regional in Raton, N.M., in October.

The winner was Matt Coleman (left) from Joplin, Mo. Others competing were a female vocalist, male duet, another male vocalist and two bands.

Photos by Pat Schiefen/The Goodland Star-News

Missouri man wins contest

Matt Coleman from Joplin, Mo., was the first artist to perform and the last standing at the Kansas State final of the Texaco Country Showdown Thursday night at the Northwest Kansas District Free Fair at Goodland.

The bleachers were filled with people bringing their own chairs and standing and sitting on the ground. The weather made it a good night to sit and listen to music.

A representative of Rocking M

Radio said Goodland was selected to have the state final because of the size of the crowd that attended. The other local sponsor was Bankwest.

Coleman represented radio station KHST/FM in Pittsburg. He will move on to the southwest regional in Raton, N.M., at the Shuler Theater on Oct. 19. There he will compete against winners from North, South and West Texas, Alabama, Arizona, Wyoming, Colorado, New Mexico and Oklahoma.

The regional winner will receive an all expense paid trip to Nashville and compete for the "Best New Act in Country Music" and \$100,000.

The criterion used for judging included marketability, vocal and instrumental ability, originality, stage presence, talent with bonus points for original songwriting.

Other competitors were Halle Stephens from Nebraska who represented KWBG Colby/Goodland, Bryce Gooch and Greg Anderson

represented KSOK/AM Arkansas City, Bryson Hasty represented KSOK/FM Arkansas City, The Tip-pers represented KMXN Lawrence and Timmy Jonas and the Whiskey Militia represented KVWF Wichita.

Jones and Rane, a band from Denver, opened the show and did accompaniment if needed.



Haying, grazing approved for Sherman County

The Kansas Farm Service Agency announced recently that emergency haying and grazing of Conservation Reserve Program Rare and Declining Habitat, Grass Waterways, Wetland Restoration, Wetland Restoration Non-Floodplain, Farmable Wetlands Pilot Buffer acreage has been approved for 66 counties

in Kansas, including Gove, Logan, Rawlins, Sheridan, Sherman, Thomas, Trego and Wallace.

"This authorization provides additional relief for many Kansas livestock producers who have suffered through severe drought conditions," said Adrain Polansky, executive director. "Many of these additional

acres have wetland related characteristics and are likely to contain better quality hay and forage than on other CRP acres."

To minimize the impact, harvesting of hay is limited to a single cutting per field. No more than 50 percent of a field may be hayed; haying must be completed by Sat-

urday, Aug. 31. Grazing is permitted through Monday, Sept. 30. Livestock must be removed at the end of the grazing period or when the minimum average height reaches five inches. No extension will be granted for authorizations. Before haying or grazing, a conservation plan must be developed in compli-

ance with laws and regulations.

Hay may be sold as long as hay was not sold from the same acreage during the previous two years. Producers without livestock may rent or lease the haying or grazing privileges. The annual payment reduction has been changed from 25 percent to 10 percent for all emer-

gency haying and grazing activity in 2013.

Conservation Reserve participants need to contact the agency's county office to request emergency haying and grazing. If the cover is destroyed, the practice must be re-established at the contract participant's own expense.

correction

The story "K-18 team defeated at state" on Page 10 of the Friday, Aug. 9, edition of the Goodland Star-News incorrectly named one of the players who hit a single and a double in the game. The player's name is Dawson Ensign.

This was a reporting error.

☆☆☆☆

The Goodland Star-News will correct any mistake or misunderstanding in a news story.

Please call (785) 899-2338 to report errors.

We believe that news should be fair and factual.

We want to keep an accurate record and appreciate you calling to our attention any failure to live up to this standard.



LIKE YOUR BEST FRIEND, WE ARE ALWAYS THERE FOR YOU.

SIT BACK AND ENJOY YOUR COMMUNITY NEWSPAPER.

The Goodland Star-News
1205 Main, Goodland • (785) 899-2338

Claremont Inn & Winery

Our Tasting & Sales Room Is OPEN Daily!



Come find out how you can create your own Custom Labeled Wine
Perfect for Weddings, Anniversaries & Businesses

Ask about our Professional Photo Booth Rental
For your Wedding or Special Event!



Claremont Inn & Winery Stratton, CO
www.claremontinn.com 719-348-5125

Classifieds work! Call 899-2338

RICHARDSON'S HOMESTEAD REALTY AND AUCTION

Great listings at Homestead Realty!

New listing...1304 Harrison...5 bedroom, 2 bath ranch style home with double car detached garage. Beautiful yard on nice corner lot. Thermal windows, newer floor coverings, open floor plan. Please call Donna today to schedule your viewing 785-899-2328 or cell 785-899-8089.

411 Arcade...3+ bedroom, 2 1/2 bath brick ranch with double car attached and detached garage. Large open kitchen/dining, main floor laundry, finished basement. \$169,900. Please let Donna show you this home 785-899-2328 or 899-8089.

408 Center...3 bedroom ranch, one level living. Open floor plan, central heat and air, hot tub. \$60,000.

617 Center...3 bedroom, 1 3/4 bath bungalow, basement, detached garage, steel siding, lot of new landscaping. \$58,000.

785-899-2328 800-974-2426
1023 Main Street ~ Goodland, KS

E-mails: Terry or Donna@goodlandhomestead.com



Terry Richardson



Donna Moore

www.GoodlandHomestead.com

BIG savings on our Truckload Sale of GM engines and GM transmissions.
SAVE HUNDREDS!
Call Rich, Kamron or Nathon at Vince's GM Center.
(719) 346-5326 or (800) 231-8991.
Can deliver within 200 miles from Burlington
VINCE'S GM CENTER
1847 Rose Avenue, Burlington, CO 80807
www.vincesgmcenr.com

from our viewpoint...

Student loan fix is no silver bullet

Congress got together this summer to solve a problem with a bipartisan approach that the Democrat-led Senate and the Republican-dominated House could both get behind.

While the nation was stunned, the deal made good sense for both parties and offered a more-or-less permanent solution to the student loan “crisis.” Instead of another one-year patch, extending artificially low rates again, the bill ties future rates to Federal Reserve 10-year lending rates.

That means instead of a crisis when rates start to yo-yo again, the cost of federally backed student loans ought to rise and fall with the market, as other rates do. There’s nothing wrong with that.

This is supposed to save the average student about \$1,500 a year in interest charges, a laudable result, but it won’t solve all the issues in higher education.

The most pressing issue is to halt the spiraling cost of an education, which has been fed by unlimited federal spending and cheap, easy-to-get loans. The solution may not be as popular as holding down interest rates, however.

Economist note that college costs have soared even though states and students have been in a pinch since the Great Recession began more than five years ago. Tuition and other costs have risen far faster than prices as a whole.

Even when states were cutting their education budgets over the last few years, colleges, private and public, kept raising rates. That defies common sense and the normal behavior of prices in a market where cash is scarce and buyers are hurting.

What made the difference?
Federal money, of course. Congress made sure that students could keep borrowing more and more to pay their bills. In effect, the huge increase in college costs – salaries for professors, equipment and buildings, what have you – is being financed on the backs of middle-class students eager for an education.

And this burden could result in a whole generation of young families who can’t quite pay the bill for college. As a class, it would be “too big to fail,” requiring perhaps another form of federal bailout.

Because it involves scaling back the federal role and making college loans a little harder to get, the solution may not be popular with families or colleges, but the threat to our young people is great. The threat to the economy could be worse.

But the market is oversaturated with college graduates right now. Huge numbers are working in jobs that just don’t require – and won’t pay for – a college degree.

Colleges have no fiscal discipline; they continued to hike tuition and fees in the face of the worst economy in half a century. Only slowing the flow of federal money will rein them in.

Should we let kids continue to take on more debt than might be wise, and continue encouraging colleges to spend and grow – or let the market slow things down? The answer should be obvious, but it may not be popular.

We’ll see how Congress responds to this one. – *Steve Haynes*

Letter Policy

The Goodland Star-News encourages and welcomes letters from readers. Letters should be typewritten, and must include a telephone number and a signature. Unsigned letters will not be published. Form letters and letters deemed to be of no public interest or considered offensive will be rejected. We reserve the right to edit letters for length and good taste. We encourage letters, with address and phone numbers, by e-mail to: <star.news@nwkans.com>.

The Goodland Star-News

(USPS No. 222-460. ISSN 0893-0562)

Member: Kansas Press Association

Inland Press Association Colorado Press Association

National Newspaper Association

e-mail: star.news@nwkans.com

*Steve Haynes, President
Kevin Bottrell, Editor
Pat Schiefen, Society Editor
Advertising Department*

*Jessica Harenberg and Angela Bonham
Sheila Smith, Circulation Manager*

Nor’west Press

*Richard Westfahl, General Manager
Gary Stewart, Jim Bowker, James Jackson
Kris McCool, Tracy Traxel,
Judy McKnight, Sheri Arroyo.*



nwkansas.com

N.T. Betz, Director of Internet Services
(nbetz49@nwkans.com)

Evan Barnum, Systems Admin. (support@nwkans.com)

Published every Tuesday and Friday except the days observed for New Year’s Day, Memorial Day, July 4th, Labor Day, Thanksgiving and Christmas Day, at 1205 Main Ave., Goodland, Kan. 67735.

Periodicals postage paid at Goodland, Kan. 67735; entered at the Goodland, Kan., Post Office under the Act of Congress of March 8, 1878.

POSTMASTER: Send address changes to The Goodland Star-News, 1205 Main Ave., Goodland, Kan. 67735.

TELEPHONE: (785) 899-2338. Editorial e-mail: star-news@nwkans.com.

com. Advertising questions can be sent to: goodlandads@nwkans.com.

The Goodland Star-News assumes no liability for mistakes or omissions in advertising or failure to publish beyond the actual cost of the ad.

SUBSCRIPTIONS: In Sherman County and adjacent counties: three months, \$29; six months, \$46; 12 months, \$81. Out of area, weekly mailing of two issues: three months, \$39; six months, \$54; 12 months, \$89 (All tax included). Mailed individually each day; (call for a price).

Incorporating:

The Goodland Daily News

1932-2003

The Sherman County Herald

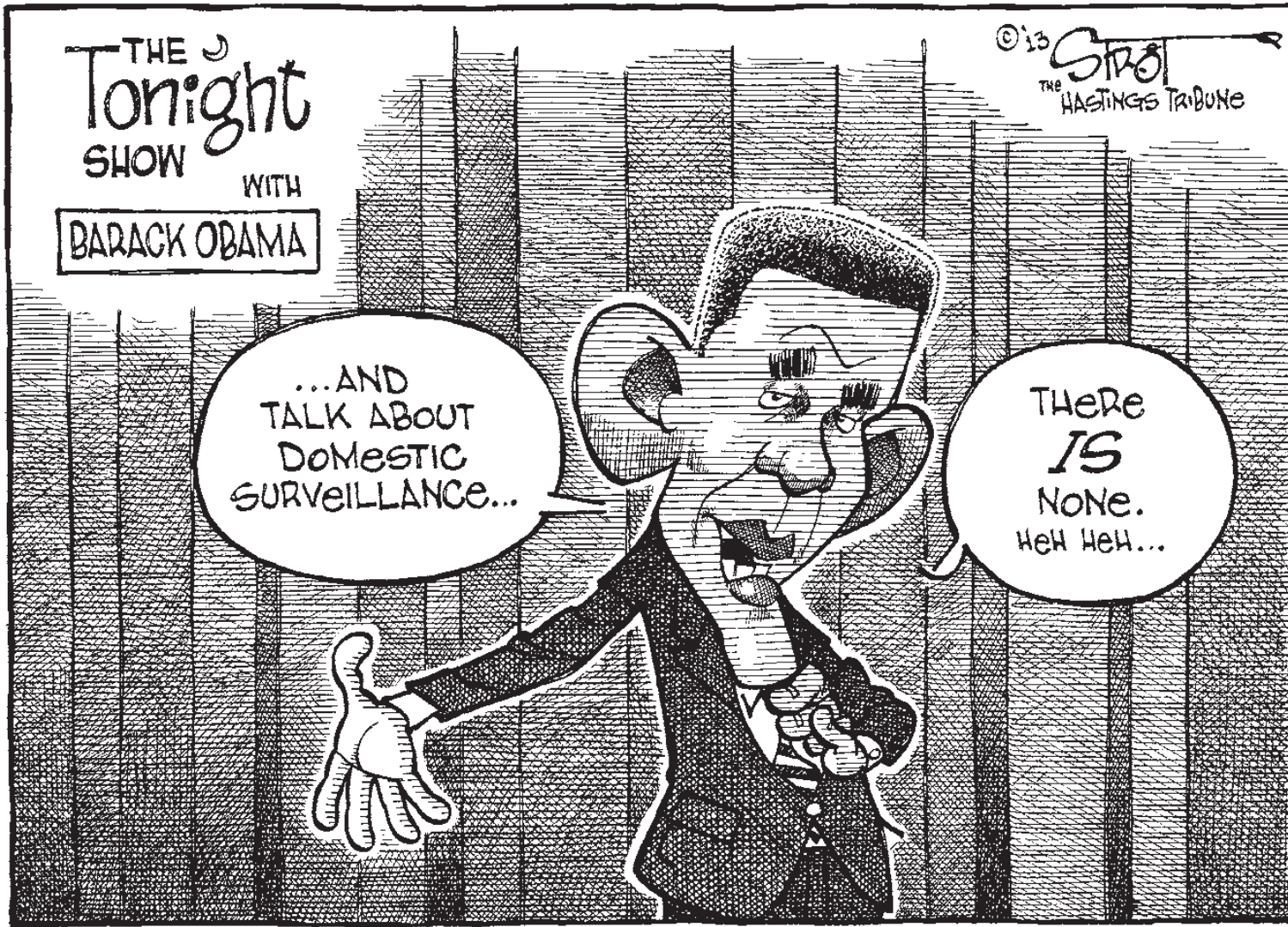
Founded by Thomas McCants
1935-1989

THE SHERMAN COUNTY STAR

Founded by Eric and
Roxie Yonkey
1994-2001

Nor’West Newspapers

Haynes Publishing Company



Turkish traffic



cynthia haynes

• open season

Watching the bumper cars at the county fair on Friday night reminded me of traffic in Istanbul.

Actually, the Turkish drivers were much better than the wild-eyed drivers at the fair. I never saw anyone hit another car during the week I sat, frequently cringing, in the seat behind the bus drivers.

Traffic signs are more or less suggestions in Turkey, it seems, but the drivers tend to be courteous, and even when four lanes of traffic coming from three directions funneled into a single lane going down a narrow alley between thousand-year-old buildings, drivers would seldom honk, gesture or curse.

Buses, cars, trucks and motorcycles moved together in a huge dance as they jockeyed for position and passed each other with inches to spare.

Going down one alley with cars parked on both sides of the road, our driver stopped for a couple of seconds, surveyed the room he had to pass safely, reached out and pulled in his mirrors – and slid by all the parked vehicles like a greased eel. We broke into spontaneous applause and gave him a generous tip at the end of the day.

As I said, while the traffic in the cities is awful, Turkish drivers are some of the most courteous I’ve ever seen.

I think I only heard our bus drivers honk a couple of times in a week of traveling around Turkey. On the one occasion, he honked politely rather than really pushing on the horn as a large van started backing up towards us and didn’t stop right away. There was nowhere for our bus to go!

Sitting on a bus as it zooms along the countryside and through the towns and cities gives you a chance to really see what’s out there.

Out in the country, away from the tourist areas and cities, you could almost believe you where in the Midwest.

The fields of newly cut wheat were interspersed with fields of barley and corn. Hay bales dotted the landscape as they do here, but the bales were mostly the old-fashioned small rectangular ones of my youth.

Then there were the fields of tomatoes and melons with workers out hand picking the produce. It’s the sort of scene you can find in Texas and Colorado, except in Turkey, the

field hands included women in long dresses and headscarfs picking produce along with the men.

The other odd thing I noticed about the living in Turkey is the house.

Turks live in apartments.

Now, Istanbul is a city of 15 million people, and you expect to find plenty of apartment buildings downtown, just as you would find them in any large city in the world.

But, we traveled all over the country, and there are way more apartment buildings than there are single-family homes. Even in the smaller cities and town, apartment buildings predominate. In towns the size of those in northwest Kansas, they have three and four-story apartment buildings. Only in the really rural areas are there single-family homes scattered about.

We had dinner with a family in their third-story walk-up apartment while we were in Istanbul. Though the stairway was rather stark, the apartment was modern and comfortable and the family had decorated it nicely.

I lived in apartments during my college days and when we were first married, and I really wouldn’t want to go back to living in one again, but lots of people love them.

And, a lot of those people seem to be Turkish.

The dumbing down of our nation

Maybe I am just a hard case, but when I read that some brilliant educator decided that school should start later because teens function better later in the day, I laughed out loud. This educator wants schools to alter their days to accommodate teens no matter what the consequences are for the rest of the world.

I’m guessing the whole idea makes teens everywhere think the world should revolve around them. Not that they didn’t already think that, but now they are going to have proof that they do rule.

Can you imagine what our ancestors would think of that idea? I mean, didn’t they walk a mile to school in the snow, uphill both ways – and it did before dawn, right? They probably stayed all day and ate whatever their moms packed in their bandana lunch packages. I bet they even studied to make sure their grades met with the approval of their parents and teachers.

My now-grown son just laughed when I told him about this idea. He said, “Mom, you would just have kicked our rears and said get up and get going. If we needed to, we would just get up earlier.”

Imagine the chaos when these same teens graduate and go out into the work force. I can just see them in an interview asking, “You want



from other pens

• sharon friedlander

me here at WHAT time?” To say that they are going to be ill-prepared for the real world is a massive understatement.

Our nation has begun to experience the brain drain caused by a few more brilliant ideas that have crippled our schools. We now don’t teach for the academic value, but so the tests will show where we stand. It must not matter at all that we are lagging behind so many other nations in science and math. Where will our scientists come from? How will research be accomplished?

It is mind boggling to me that we continue to hamstring our educational system, then complain that our kids know nothing to help them survive in a competitive world after graduation. We can no longer discipline our children without the threat of arrest, and neither can the schools. We mustn’t make our children conform to rules and regulations because it might scar them for life.

Celebrating farmer’s markets

Over the first week of August, local markets across the country celebrated National Farmers Market Week.

Farmers markets are an important part of America’s diverse agriculture sector, providing unique benefits to communities across our nation. They give Americans a chance to learn about agriculture by meeting some of the people who grow and raise our food. They provide valuable marketing opportunities for small and beginning farmers – many of whom scale up to larger regional markets and other institutions. And they help expand access to locally-grown foods that are in greater demand than ever before.

We have seen incredible growth in the number of farmers markets over the past few years. Today, according to the National Farmers Market Directory, more than 8,100 local markets are in operation – up from about 5,000 markets just a few years ago.



from other pens

• tom vilsack

Sales of local foods have skyrocketed along with the popularity of farmers markets. In 2005, local food sales totaled about \$1 billion across the nation. Last year sales of local foods was nearly \$7 billion.

At the U.S. Department of Agriculture, we believe that strengthening local and regional food systems, including farmers markets, will be a cornerstone of a revitalized rural economy.

Under the Obama Administration, the Agriculture Department has helped nearly 450 farmers market and other direct-marketing projects in every state, under our Farmers Market Promotion Program. We’ve also supported

nearly 300 projects to help farmers develop and sell new, value-added products through our Value-Added Producer Grants program.

We have helped increase the number of markets that accept EBT technology – which allows folks to use nutrition assistance benefits to buy fresh, farmers market produce – by nearly 100 percent in the last two years.

And to be sure American agriculture is ready to meet the growing demand for local products, we’ve helped thousands of small producers to get started and keep growing.

We want to continue these efforts – and to do so, the department continues to urge Congress to pass a comprehensive Food, Farm and Jobs Bill. This would expand the department’s support for local and regional marketing opportunities, including farmers markets, around the country.

Tom Vilsack is currently serving as the United States Secretary of Agriculture.

Commission approves budget

BUDGET, from Page 1

Finley had a vehicle, but it sold. The Jeep, replacing an existing 1993 Buick, will serve as a pool car for various city staff.

• Heard a proposal from Kay Younger of the Goodland Arts Council to refurbish the fountain at Chambers Park into a planter.

Younger said the council will power wash, caulk and paint the fountain and then fill it with dirt and plant various types of flowers. There will be several other flower pots arranged around the fountain. She said the goal was to have the painting done by the Flatlander Fall Festival in September.

Mayor Annette Fairbanks asked if the Arts Council would be responsible for maintaining the fountain after the work is com-

pleted. Younger said the council will maintain it. Fairbanks suggested putting something in writing to that effect.

The commission did not approve the project at the meeting, suggesting that first Younger should check with the Chad Mann family, as his memorial had been responsible for a lot of work on the fountain.

• Received an Economic Development report from director Michael Solomon, who said that the Crop Production Services expansion is moving along. The city's road design has been approved by the Kansas Department of Transportation, he said, and it is out to bid with the deadline being Aug. 27. The road is being bid as one project along with a road for a new four-home residential project.

Brewster to celebrate 125th anniversary

BREWSTER, from Page 1

power lines to Colby. Brewster built a water works in 1930 and issued bonds for a new sewer system the next year.

Movies came to Brewster in the 1920s. Charley Mallory built the Liberty Theatre, now closed, in 1925.

Brewster formed a school district in 1888, less than two months after the town was platted, and classes started Jan. 14, 1889.

Several social organizations have entertained the community during its history, including an Odd Fellow and Rebekah lodges, American Legion and Veterans of Foreign Wars posts and auxiliaries, a Grand Army of the Republic post, the Brewster Lions Club, Boy Scout and Girl Scout troops and 4-H clubs.

In 1988, when Brewster celebrated its centennial, the population was 340. At the last census in 2010, Brewster had 305 residents.

Brewster businesses and community services now include a post office, senior center, grocery store, S&T Telephone, Prairie Land Insurance, Chelle's Bar and Grill, the Craft Peddler, TJ's Tire, Frontier Ag Inc., CHS Brewster Agronomy Center, ADM Grain, Thomas County Cabinetry, Schultz Trailer Park, the Beauty Retreat, Ag Sun LLC, Brewster Electric and Craig Fulwider Carpentry.

Brewster Heritage Center

The Brewster Heritage Center Library and Museum, opened in 1975 as a bicentennial project, will be open Saturday, Aug. 24, from 8 a.m. to 5 p.m. The center is normally open Mondays and Wednesdays from 1 to 4 p.m. and Saturdays

from 9 to 11 a.m.

The center, fully supported by donations and memorials, is in the former Brewster State Bank, built in 1919 to replace a smaller wooden building, which later served as the American Legion Building. The museum still uses the 1905 door from the original bank.

Half of the building houses the library while the other half has artifacts from Brewster's past. The museum includes a school room, a kitchen area filled with gadgets from the past, a tool room with a monkey wrench collection, clothes from 1912 to 1918 and a picture gallery.

The library features books of its own, along with services from the Northwest Kansas Library System.

Wyoming recognizes Kansas carry permits

Kansans with concealed carry licenses can now use those licenses in Wyoming, according to Kansas Attorney General Derek Schmidt.

Wyoming is now the 32nd state to recognize Kansas concealed carry licenses. This allows Kansas license

holders to legally carry concealed handguns while traveling in Wyoming, though they must comply with Wyoming laws.

Wyoming's recognition is a response to Kansas legislation enacted earlier this year recognizing

other states' permits.

Kansas now recognizes all valid out-of-state permits when the non-resident permit holder is traveling temporarily in Kansas, but individuals moving to Kansas must obtain a Kansas-issued license.

A complete list of states that recognize Kansas permits is available on the Attorney General's website at www.ag.ks.gov.

The Goodland Star News Service Directory

August Service Special Oil Change Special

5 qts. Conventional Oil
& Filter change

\$19⁹⁵*

6 qts. Dexos Oil
& Filter change

\$26⁹⁵*

*Not valid with other offers. Not valid on Diesel Engines. Not valid with synthetic oil. Expires 8/31/2013.



No sales tax on labor in Colorado.

SCHEDULE ONLINE AT:
www.vincesgmcenter.com

1847 Rose Ave., Burlington, CO 80807
(800) 231-8991 • (719) 346-5326

Be sure to visit us on Facebook!

WEEKEND SPECIAL FRIDAY, SATURDAY AND SUNDAYS!

*Half rack ribs, mashed potatoes,
corn on the cob and a drink
ONLY \$10!*

Hours:
Monday-Saturday 10:30 AM-8:30 PM
Sundays 10:30 AM-2 PM



The Service Directory does the
hard work for you!

Call Angela today to
find out how!
(785) 899-2338



www.rcdsnow.com

FALL ENROLLMENT STARTS SOON!
AUGUST 12-15, 4-7 PM AT STUDIO

Don't swelter through another hot summer!



Sleep in cool, cool comfort with
a dependable Trane air conditioning
system. Don't hesitate...
call today for information!

Bowman Heating & Air Conditioning
(785) 899-5770
577 W. 31st, Goodland

WANTED: DIRTY CARPET

IF YOU HAVE DIRTY CARPET, WE CAN STEAM CLEAN IT.
NO JOB TOO BIG OR TOO SMALL!

- Commercial/Residential
- Advanced Truck Mounted Steam Cleaning Equipment
- Water Damage Restoration
- FREE ESTIMATES

PRO FLOOR CARE

Carpet & Upholstery Cleaning
(785) 462-8313 or (800) 473-4138



Cleaning
NW Kansas
one house at
a time!

Truck Lettering 800-886-2423

AWARD WINNING SIGNS AND PINSTRIPING SINCE 1974

Hot Brush 204 W. 4th Box 309
Bird City, Kan. 67731

Superior
Flooring and Furniture and Accessories
360 14th St., Burlington, CO ~ PHONE: (719) 346-7579
Dan and Myrna Troyer

Langer Industrial Service

2022 County Road 11 • Levant, KS 67743 • 785-586-2208
Monday - Friday 8 a.m. - 5 p.m.

We pay cash up to for all scrap metal*

- Brass • Copper • Aluminum • Batteries • Electric motors • Cars
- Combines • Farm Equipment • Prepared/Unprepared Iron and Tin
- Container Service • Off site baling and car crushing
- Limited pickup service available

Schedule deliveries after normal business hours by appointment when necessary

* Some Conditions Apply

Culligan

better water. pure and simple.®

- Drinking Systems • Water Softeners (Sales & Rentals)
- Water Coolers • Salt Sales & Delivery

Scheopner's Water Conditioning, Inc.

Goodland & Colby, KS • Toll free: (800) 536-2352

"Seek Shelter Today!"

LIFE • HOME • CAR • FARM • BUSINESS



Jim Alcorn, Agent
1624 S. Main Street
Goodland, KS 67735-0727
Business: (785) 899-2553

www.shelterinsurance.com



NEBRASKA
KANSAS
COLORADO
TIRE GROUP

GOODYEAR

KANSASLAND TIRE

Willie Weems
Store Manager
24-hour Service

1402 Main 785.899.3689
Goodland, KS 67735 Fax: 785.899.2131
www.thetirestore.com Toll Free: 800.281.3689
Tire and Auto Service Professionals

The Decorating Co.



Interior Design Consultants
**Irene Smith &
Rochelle Kling**

There's no limit to our imagination.

106 E. 11th, Goodland, KS 67735
(785) 890-5441
E-mail: decorco@st-tel.net



"Where Service is an Affair of the Heart"

DAN BRENNER FORD, INC.

222 W. HWY. 24, I-70 BUSINESS LOOP, GOODLAND, KS
(Toll Free) 800-636-8770
(Business) 785-899-2316 (Fax) 785-899-2317

Welcome



Dr. Justin Evanson
DDS, MD

Oral and
Maxillofacial
Surgeon



Dr. Justin Evanson has joined the Burlington Family Dentistry team, providing ORAL SURGERY with IV SEDATION, including wisdom teeth extractions. •• Accepting most insurances. ••

Now you can have oral surgery right here in Burlington and avoid the trip to the city.



BURLINGTON
FAMILY DENTISTRY
340 14th St. • Burlington

www.burlingtonfamilydentistry.net

Jason Ehtessabian,
DDS, PC

Please call for an
appointment

(719) 346-8266



Dr. E



Windy Plains Bike Shop

Professional bicycle repairs since 1978!
Parts, accessories and service for all makes.
Pick up and delivery available in Goodland!

TIRED OF FLATS?
ASK ABOUT OUR NO FLAT GUARANTEE!

Harold Snethen

6085 Rd. 17

(785) 899-4786 • (785) 899-5858 (home)
Same day service on most out of town repairs!

NEW SYSTEM PROFESSIONAL WINDOW CLEANING



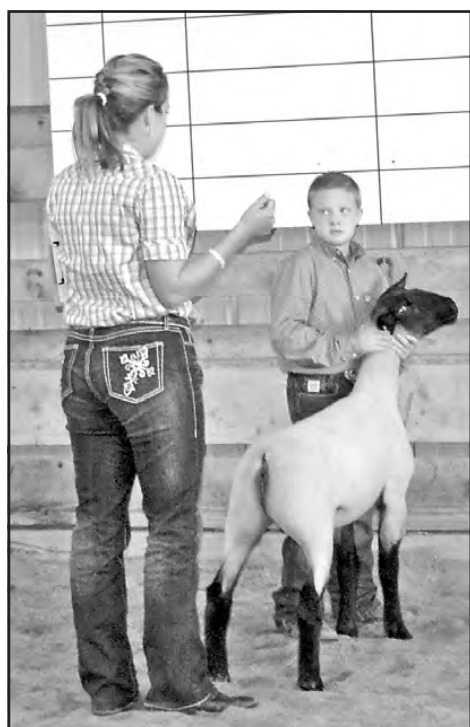
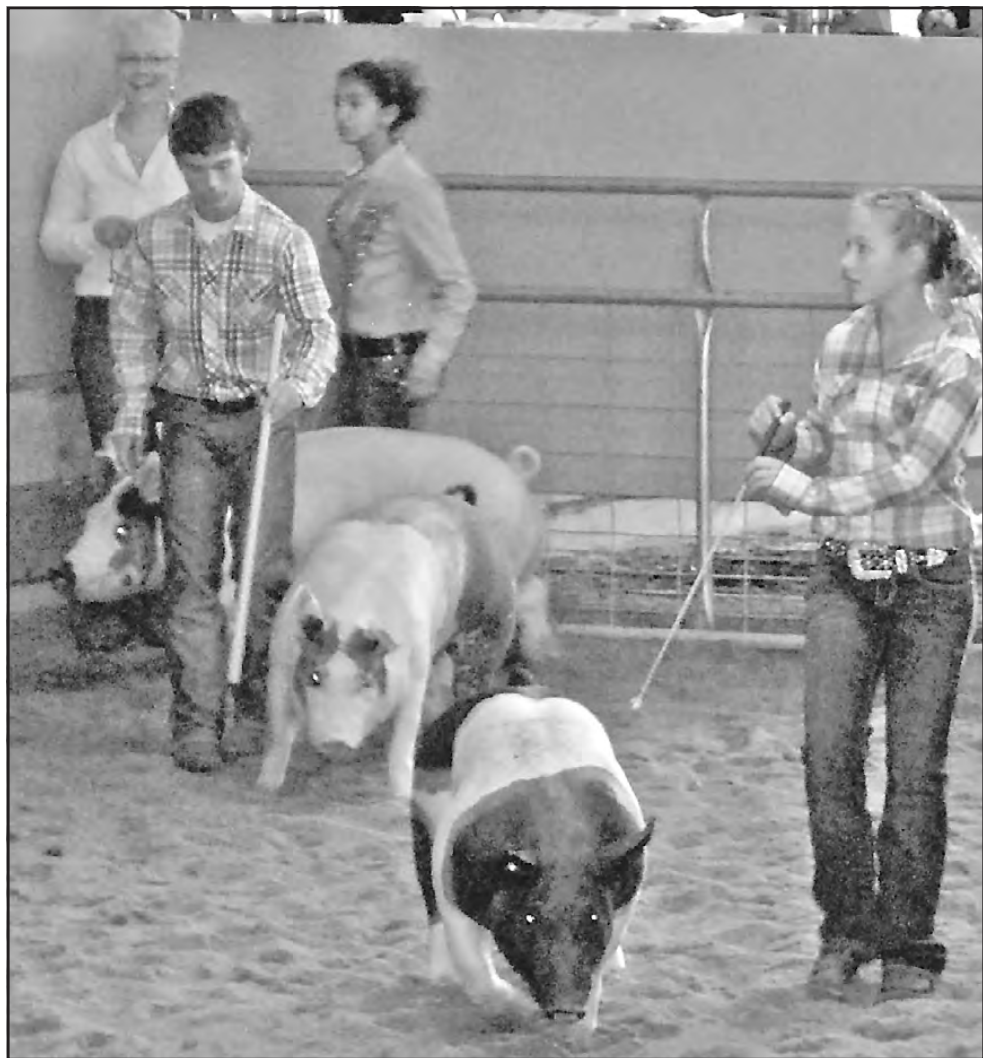
Serving Northwest Kansas
& Northeastern Colorado
since 1992!

(785) 462-6995 OR (800) 611-6735
egriffith@st-tel.net

www.mywindowcleaner.net



Eldean and Janet Griffith • PO Box 692, Colby, KS



Animals, crafts and more shown at fair

The various showmanship events are a big draw to the Northwest Kansas District Free Fair. The Swine Show (top left) was held Wednesday, while the Sheep Show (above left) was last Tuesday. Also judged were entries such as vegetables and flowers (above right) On Thursday was the Round Robin Showmanship event (left), where 4-Hers show several different animals that are not their own. Rabbit and poultry judging (below) was Monday. Various crafts judged at the fair include latch hook (right).

Photos by Kevin Bottrell and Pat Schiefen/The Goodland Star-News



All Central Time, for Kansas Mountain Time Stations subtract an hour

Tuesday Evening							August 13, 2013				
	7:00	7:30	8:00	8:30	9:00	9:30	10:00	10:30	11:00	11:30	
ABC	Extreme Weight Loss				Body of Proof		Local	Jimmy Kimmel Live		Nightline	
CBS	NCIS		NCIS: Los Angeles		Person of Interest		Local	Late Show Letterman		Ferguson	
NBC	Hollywood Game Night		America's Got Talent				Local	Tonight Show w/Leno		J. Fallon	
FOX	So You Think				Local						
Cable Channels											
A & E	Storage	Storage	Barter Kings		Barter Kings		Storage	Storage Wars		Local	
AMC	Godfather II						Godfather III		Local		
ANIM	Megalodon: The Monst				Megalodon: Sharktwee				Shark	Local	
BET	Diary	The Game	The Game	The Game	Husbands- Ho.		Wendy Williams Show		Phat	Local	
BRAVO	Interior Therapy		Interior Therapy		Million Dollar LA		Happens		Property	Real Housewives	
CMT	Local	Local	Reba	Reba	Extreme Makeover		Extreme Makeover		Extreme Makeover		
CNN	Piers Morgan Live		Anderson Cooper 360		E. B. OutFront		Piers Morgan Live		Anderson	Local	
COMEDY	Tosh.0	Tosh.0	Drunk	The Jesel	Daily	Colbert	Drunk	The Jeselnik Offensi		Local	
DISC	Local	Local	Amish Mafia		Amish Mafia: The Res		Amish Mafia		Tickle	Porter Ri	
DISN	Local	Local	Good Luck Jessie		Cars				Dog	Austin	
E!	Shallow Hal				Total Divas		Chelsea	E! News		Chelsea	
ESPN	World Series		World Series		SportsCenter		SportsCenter		SportCtr	Local	
ESPN2	SportCtr	Softball			SportCtr		Baseball Tonight		Nine/IX	Local	
FAM	Twisted		The Vineyard		The 700 Club		The Vineyard		Sexy	Local	
FOOD	Local	Local	Chopped		Chopped		Chopped		Chopped		
FX	Step Brothers				Step Brothers				Vampires Suck		
HGTV	Property	Property	Property	Property	Hunters	Hunt Intl	Power Broker		Property	Property	



We Celebrate Hometown Life

Stories from hometowns just like yours. Look for us each week in this paper.

HIST	Shelby	Shelby	Shelby	Shelby	Hatfields	Hatfields	Shelby's Greatest Hits Vol. 1			Local
LIFE	Dance Moms		Double	Double	Double	Double	Dance Moms			Local
MTV	Catfish: The TV Show		Catfish: The TV Show		Sara	Catfish: The TV Show	True Life			Local
NICK	Local	Local	Hathaways	Victoriou	Nick News	Full H'se	Full H'se	Full H'se	The Nanny	The Nanny
SCI	Face Off			Heroes of Cosplay	Face Off				Cosplay	Local
SPIKE	Ink Master		Ink Master		Tattoo	Tattoo	Ink Master		Ink Maste	Local
TBS	Big Bang	Big Bang	Big Bang	Big Bang	Conan		Conan		Conan	Local
TCM	Girl Crazy			The Human Comedy					Requiem-Hvy.	Local
TLC	Local	Local		The Little Couple		Who Do You		Who Do You	The Little Couple	
TNT	Rizzoli & Isles		Perception		Rizzoli & Isles		Perception		Mentalist	Local
TOON	King/Hill	King/Hill	Amer. Dad	Amer. Dad	Fam. Guy	Fam. Guy	Chicken	Aqua Teen	Squid	Local
TRAV	Airport 2	Airport 2	Mud People		Bizarre Foods		Airport 2	Airport 2	Mud Pple	Local
TV LAND	Raymond	Raymond	Raymond	Raymond	King	King	The King of Queens		King	Local
USA	Covert Affairs		Suits		Graceland		Covert Affairs			Local
VH1	Love, Hip Hop		Couples Therapy		Stomp the Yard 2				Hip Hop	Local
WGN	How I Met	How I Met	WGN News at Nine		Funniest Home Videos		Rules	Rules	30 Rock	Local
Premium Channels										
HBO	Local	Local	Mr. Poppers		Clear History				Hard Knocks	
MAX	Local	Local	Juwanna Mann		Chronicle				Prometheus	
SHOW	Local	Local	Salmon	Trevor Noah: African	The Help					

©2009 Hometown Content, listings by Zap2it

Wednesday Evening							August 14, 2013				
	7:00	7:30	8:00	8:30	9:00	9:30	10:00	10:30	11:00	11:30	
ABC	Middle	Last Man	Mod Fam	Neighbors	ABC's The Lookout		Local	Jimmy Kimmel Live	Nightline		
CBS	Big Brother		Criminal Minds		CSI: Crime Scene		Local	Late Show Letterman	Ferguson		
NBC	America's Got Talent		America's Got Talent		Camp		Local	Tonight Show w/Leno	J. Fallon		
FOX	MasterChef		MasterChef		Local						
Cable Channels											
A & E	Duck D.	Duck D.	Duck Dynasty		Bad Ink	Bad Ink	Duck D.	Duck Dynasty		Local	
AMC	Scarface						Scarface			Local	
ANIM	River Monsters		Wild Appalachia		River Monsters		River Monsters		Wild App.	Local	
BET	Death at a Funeral					The Game	The Wendy Williams Show			Local	
BRAVO	Million Dollar LA		Million Dollar LA		Top Chef Masters		Happens	Million Dollar LA		Top Chef	
CMT	Local	Local	Reba	Reba	Shanghai Knights					Bounty	
CNN	Piers Morgan Live		Anderson Cooper 360		E. B. OutFront		Piers Morgan Live		Anderson	Local	
COMEDY	South Pk	South Pk	Futurama	Futurama	Daily	Colbert	Futurama	South Park		Local	
DISC	Local	Local	Naked and Afraid		Naked and Afraid		Naked and Afraid		Naked and Afraid		
DISN	Local	Local	Good Luck Jessie		Austin	Dog	ANT Farm	Shake It	Dog	Austin	
E!	Kardashian		Kardashian		The Soup	The Soup	Chelsea	E! News		Chelsea	
ESPN	MLB Baseball				SportsCenter		SportsCenter		SportCtr	Local	
ESPN2	Soccer				Softball				Baseball	Local	
FAM	Spell-Mageddon		Melissa	Daddy	The 700 Club		Prince	Prince	Sexy	Local	
FOOD	Local	Local	Restaurant: Im.		Restaurant: Im.		Restaurant: Im.		Mystery D	Mystery D	
FX	Transformers				The Bridge		The Bridge		The Bridge		
HGTV	Love It or List It		Property Brothers		Hunters	Hunt Intl	Brother vs. Brother		Property Brothers		
HIST	Larry the Cable Guy		Top Shot All-Stars		Larry the Cable Guy		Pawn	Pawn Stars		Local	
LIFE	Sleep-Enemy		I Know What				Sleeping With the Enemy			Local	
MTV	The Challenge		The Challenge		The Challenge		Catfish: The TV Show		Catfish	Local	
NICK	Local	Local	Sam & Cat	Victoriou	Full H'se	Full H'se	Full H'se	Full H'se	Full H'se	Local	
SCI	Paranormal Witness		Joe Rogan Questions		Paranormal Witness		Joe Rogan Questions		Odysseus	Local	
SPIKE	Cops	Cops	Fight Master		Street Warrior				Ways Die	Local	
TBS	Big Bang	Big Bang	Big Bang	Deal With	Conan		Deal With	Conan		Local	
TCM	Carson	Dark Victory				Man-Came to Dinner				Local	
TLC	Local	Local	Raising Fame		Honey	Honey	Honey	Extreme Cougar Wives		Honey	
TNT	Franklin & Bash		Castle		Franklin & Bash		The Mentalist		Mentalist	Local	
TOON	King/Hill	King/Hill	Amer. Dad	Amer. Dad	Fam. Guy	Fam. Guy	Chicken	Aqua Teen	Squid	Local	
TRAV	Adam Rich	Adam Rich	Best Daym	Best Daym	Food Paradise		Adam Rich	Adam Rich	Best Daym	Local	
TV LAND	Raymond	Raymond	Cleveland	The Exes	Soul Man	King	King	King	Cleveland	Local	
USA	Royal Pains		Necessary Roughness		Suits		Royal Pains			Local	
VH1	Couples Therapy		Couples Therapy		La La	La La	Couples Therapy		Hollywood	Local	
WGN	Rules	Rules	WGN News at Nine		Funniest Home Videos		Rules	Rules	30 Rock	Local	
Premium Channels											
HBO	Local	Local	Hard	Rise of the Guardians			The Newsroom		True Blood		
MAX	Local	Local	Lake Placid		Strike Back		Chasing Mavericks				
SHOW	Local	Local	Man on a Ledge		Ray Donovan		Jim Rome on Showtime		Dexter		

©2009 Hometown Content, listings by Zap2it

Thursday Evening							August 15, 2013				
	7:00	7:30	8:00	8:30	9:00	9:30	10:00	10:30	11:00	11:30	
ABC	Wipeout		Motive		Rookie Blue		Local	Jimmy Kimmel Live	Nightline		
CBS	Big Bang	Two Men	Big Brother		Elementary		Local	Late Show Letterman	Ferguson		
NBC	America's Got Talent		Hollywood Game Night		Hollywood Game Night		Local	Tonight Show w/Leno	J. Fallon		
FOX	Glee		New Girl	Mindy	Local						
Cable Channels											
A & E	The First 48		Panic 9-1-1		Panic 9-1-1		The First 48		Local		
AMC	Pulp Fiction		Owner	Owner	The Pitch		Owner	Owner	Pulp	Local	
ANIM	Wildman	Wildman	Wildman	Wildman	Gator Boys		Wildman	Wildman	Wildman	Local	
BET	Are We Done Yet?		National Security			The Wendy Williams Show			Local		
BRAVO	Housewives/NJ		Housewives/NJ		Housewives/NJ		Happens		Housewives/OC		
CMT	Local	Local	Reba	Reba	Jerry Maguire						
CNN	Piers Morgan Live		Anderson Cooper 360		E. B. OutFront		Piers Morgan Live		Anderson	Local	
COMEDY	Sunny	Sunny	Tosh.0	Tosh.0	Daily Colbert		Tosh.0		Local		
DISC	Local	Local	Airplane Repo		Airplane Repo		Airplane Repo		Airplane Repo		
DISN	Local	Local	Good Luck Jessie		Adventures of Sharkboy		Video	Dog	Austin		
E!	El News	Vanessa	Total Divas		Pop Innovators		Chelsea	E! News	Chelsea		
ESPN	NFL Football				SportsCenter		SportsCenter		SportCtr	Local	
ESPN2	ATP Tennis				ATP Tennis				NFL Live	Local	
FAM	Titanic				The 700 Club		Prince	Prince	Insanity!	Local	
FOOD	Local	Local	Chopped		Cutthroat Kitchen		Chopped		Anne Burrell		
FX	Superbad		Anger	Anger	Wilfred	Wilfred	The Simpsons Movie				
HGTV	Rehab	Rehab	Renovation Raiders		Hunters	Hunt Intl	Hunters	Hunt Intl	Renovation Raiders		
HIST	Pawn	Pawn	Hatfields	Hatfields	Shelby	Shelby	Pawn	Pawn Stars	Local		
LIFE	Project Runway			Supermarket	Double		Project Runway		Local		
MTV	Ridic.	Ridic.	Ridic.	Ridic.	Strangers		Ridic.	Malibu's Most Wanted		Local	
NICK	Local	Local	The Last Airbender				Full H'se		Full H'se	The Nanny	
SCI	Pirates-Dead				Prince Caspian				Local		
SPIKE	IMPACT Wrestling				Kick-Ass				Local		
TBS	Big Bang		Sullivan	Big Bang	Conan		Sullivan	Conan	Local		
TCM	The Macomber Affair		Man in Gray				Duke in the Sun		Local		
LOCAL	Local	Local	Extreme Cougar Wives		Say Yes:The Big Day		Four Weddings		Wedding Island		
TNT	Hawaii Five-0		Hawaii Five-0		Perception		Franklin & Bash		Cold Case		
TOON	King/Hill	King/Hill	Amer. Dad	Amer. Dad	Fam. Guy	Fam. Guy	Childrens	Newsread	Squid	Local	
TRAV	Mysteries-Museum		Mysteries-Museum		Mysteries-Museum		Mysteries-Museum		Mysteries		
TV LAND	Raymond	Raymond	King	King	King	King	Everybody-Raymond		Raymond	Local	
USA	Burn Notice		Graceland		Cover Affairs		Burn Notice		Local		
WH1	Love, Hip Hop		Love, Hip Hop		Hollywood Exes		T.I.-Tiny		La La	Music	
WGN	How I Met	How I Met	WGN News at Nine		Funniest Home Videos		Rules		Rules	30 Rock	
Premium Channels											
HBO	Local	Local	Rock of Ages		The Newsroom		The Watch				
MAX	Local	Local	The Eagle				Strike Back		Taken 2		
SHOW	Local	Local	50/50		Step Up Revolution				Katt Williams		

Delinquent Taxes

Published in the Goodland Star News, Goodland, Kansas, Tuesday, August 06, 13 & 20, 2013. Notice is hereby given that the taxes assessed for the year 2012 on the lands, lots and blocks described in the following list, accompanied by the names of the owner and situated in Sherman County, State of Kansas, are whole or in part unpaid and that said land, lots or blocks will be, on the First Tuesday of September, 2013 bid off by me in the name of Sherman County, NO BIDDERS BEING allowed and sold to Sherman County for the amount of delinquent taxes and interest and legal charges due thereon and unpaid to said date, according to the provision of Chapter 79, Articles 23 of the Kansas Statutes Annotated unless otherwise prohibited by applicable Federal or State law.

April J. Hall,
Sherman County Treasurer

706.50 Aaron, Rose Dorine Subd-2nd Addn to Goodland Blk-36 Lot-15 Prop Addn: 402 W 7th St 67735
75.41 Adams, David T & Susan D Subd-Kanorado Original Town Blk-4 Lot-14 Prop Addn: Main St 67741
103.15 Adams, David T & Susan D Subd-Kanorado Original Town Blk-4 Prop Addn: Walnut St 67741
171.56 Aguirre, Joe Jr Subd-Rule's 1st Add to Kanorado Blk-17 Lot-5 Prop Addn: 308 Locust St 67741
47.89 Aguirre, Jose Jr & Pena, Olevia Subd-Rule's 1st Add to Kanorado Blk-15 Lot-9 Prop Addn: 102 Front St 67741
358.52 Albers, Andrew Ray Albers, Glenda Leann Subd-First Addn to Goodland Blk-38 Lot-5 Prop Addn: 612 W 15th St 67735
681.90 Almanza, Luis A & Tania Elvira Chavez Subd-Beahm's Addn to Goodland Blk-26 Prop Addn: 420 Harrison Ave 67735
96 Appraisal Assoc of Okla Sec-24 Twp-10 Rng-41
2.40 Appraisal Assoc of Okla Sec-08 Twp-10 Rng-40
20.95 Appraisal Assoc of Okla Sec-22 Twp-10 Rng-40
5.30 Appraisal Assoc of Okla Sec-19 Twp-10 Rng-40
16.67 Appraisal Assoc of Okla Sec-27 Twp-10 Rng-40
247.46 Arasmith, Patrick L & Margaret L Subd-Sharp's Addn to Goodland Blk-6 Prop Addn: 1515 Cattletail Ave 67735
898.86 Armstrong, Robert K Subd-Goodland City Tracts Sec-29 Twp-08 Rng-39 Prop Addn: 2157 Caldwell 67735
36.01 Bagley, Rex & Sandra Subd-Kanorado Original Town Blk-11 Prop Addn: Main St 67741
624.33 Baker, DELVIN & Darlene, Sec-01 Twp-09 Rng-40 Prop Addn: 6130 Hwy 27 67735
3,554.33 Balderas, Jesus & Rosalba Subd-Goodland City Tracts Sec-19 Twp-08 Rng-39 Prop Addn: 910 W Hwy 24 67735
173.30 Barnhart, Shirley A Subd-Sharp's Addn to Goodland Blk-1 Lot-9 Prop Addn: 520 W 16th St 67735
172.18 Baumfalk, Virgil Sec-06 Twp-08 Rng-40 Prop Addn: 1396 Road 67 67735
581.17 Beedy, Geraldine V (TOD) Subd-Kohler First Add to Goodland Blk-5 Prop Addn: 215 Cherry Ave 67735
216.22 Bennett, Debra & Hall, Tika Subd-Beahm's Addn to Goodland Blk-26 Prop Addn: 404 Harrison Ave 67735
36 Benton, Laura Edith Sec-24 Twp-10 Rng-41
8.18 Benton, Laura Edith Sec-15 Twp-10 Rng-40
7.10 Benton, Laura Edith Sec-27 Twp-10 Rng-40
1,929.68 Bentzinger, Justin D Subd-Goodland Original Town Blk-66 Prop Addn: 1102 Main Ave 67735
479.86 Bentzinger, Justin D Subd-First Division of First Addn Blk-10 Lot-1 Prop Addn: 1502 Syracuse Ave 67735
475.62 Bentzinger, Justin D Subd-Sharp's Addn to Goodland Blk-12 Lot-24 Prop Addn: 515 W 16th St 67735
572.67 Bentzinger, Justin D Sec-13 Twp-08 Rng-40 Prop Addn: Co Rd
1,226.20 Bentzinger, Justin D Sec-23 Twp-08 Rng-40 Prop Addn: Co Rd
1,149.22 Black, Shawn Sec-31 Twp-07 Rng-38 Prop Addn: 2540 Road 68 67735
607.35 Blevins, Ira D & Mary E Subd-Goodland Original Town Blk-73 Lot-15 Prop Addn: 1219 Center Ave 67735
1,015.78 Bohl, Larry D & Marilyn I Subd-2nd Addn to Goodland Blk-4 Prop Addn: 124 Main Ave 67735
415.17 Bohl, Marilyn Subd-C K & N Addn to Goodland Blk-10 Prop Addn: 1528 Sherman Ave 67735
329.26 Bohl, Marilyn I Subd-Goodland Original Town Blk-71 Lot-7 Prop Addn: 313 W 12th St 67735
659.27 Bohl, Marilyn I Subd-2nd Addn to Goodland Blk-12 Lot-17 Prop Addn: 215 Main Ave 67735
118.40 Bohl, Marilyn I & Larry D Subd-Sharp's Addn to Goodland Blk-9 Lot-3 Prop Addn: 1606 Texas Ave 67735
47.89 Bohl, Marilyn I & Larry D Subd-Sharp's Addn to Goodland Blk-9 Lot-5 Prop Addn: Texas Ave 67735
568.64 Bohl, Marilyn I Etal Subd-Goodland Original Town Blk-80 Prop Addn: 122 W 14th ST 67735
85.69 Borgman, Joy TOD to James M Borgman Jack L Borgman Sec-28 Twp-07 Rng-39
85.69 Borgman, Belle, Borgman, Jack L, Borgman, James M TOD Sec-27 Twp-07 Rng-39
394.12 Bostwick, Samara Subd-Beahm's Addn to Goodland Blk-38 Prop Addn: 602 College Ave 67735
15.33 Bostwick, Samara Subd-2nd Addn to Goodland Blk-19 Lot-17 Prop Addn: Sherman Ave 67735
385.26 Bostwick, Samara Subd-2nd Addn to Goodland Blk-24 Lot-6 Prop Addn: 412 Center Ave 67735
15.33 Bostwick, Samara Subd-2nd Addn to Goodland Blk-47 Lot-13 Prop Addn: Sherman Ave 67735
22.71 Bostwick, Samara Subd-Sharp's Addn to Goodland Blk-1 Lot-13 Prop

Addr: 1525 Montana Ave 67735
164.39 Bostwick, Samara Subd-Sharp's Addn to Goodland Blk-1 Lot-14 Prop Addn: 1521 Montana Ave 67735
339.86 Bostwick, Samara Subd-Sharp's Addn to Goodland Blk-1 Lot-16 Prop Addn: 1519 Montana Ave 67735
47.62 Bostwick, Samara Subd-Sharp's Addn to Goodland Blk-1 Lot-18 Prop Addn: 1515 Montana Ave 67735
187.65 Buell, Leona L & Weehunt, Loren Dale Subd-Sharp's Addn to Goodland Blk-3 Lot-6 Prop Addn: 1534 Syracuse Ave 67735
1,073.12 Burk, Jerrod Sec-31 Twp-08 Rng-39 Prop Addn: 3342 Sunset Dr 67735
1.56 Buzzi, Gretchen Revocable Trust Sec-18 Twp-09 Rng-37
328.40 Caldwell's Inc Subd-Kohler First Add to Goodland Blk-6 Lot-12 Prop Addn: 205 Caldwell Ave 67735
276.88 Calkins, Leonard L & Betty M Subd-First Addn to Goodland Blk-28 Lot-4 Prop Addn: 809 W 12th ST 67735
80.07 Calkins, Loran Etal Subd-First Addn to Goodland Blk-28 Lot-7 Prop Addn: W 12th St 67735
44.45 Carson, Connie Subd-Sharp's Addn to Goodland Blk-8 Prop Addn: 910 W 17th St 67735
10.34 Chapman, Christopher E Sec-31 Twp-06 Rng-42
144.14 Clark, Angel A Subd-C K & N Addn to Goodland Blk-11 Lot-6 Prop Addn: 1516 Grand Ave 67735
113.13 Clift, Jimmy Subd-Sharp's Addn to Goodland Blk-1 Lot-11 Prop Addn: 526 W 16th St 67735
337.86 Cockey, William A & Linda M Subd-2nd Addn to Goodland Blk-35 Lot-16 Prop Addn: 408 W 6th St 67735
47.87 Cody, Amy M Estate Subd-Kanorado Original Town Blk-5 Lot-11 Prop Addn: 504 Center St 67741
1,926.51 Cody, Rodney Dean Jr Family TR Subd-Goodland City Tracts Sec-19 Twp-08 Rng-39 Prop Addn: 118 E Hwy 24 67735
465.29 Cody, Rodney Dean Jr Family TR Subd-Goodland Sub of Blks to Orig Blk-50 Prop Addn: 222 E 10th St 67735
267.77 Conrad, Lawrence A Sec-04 Twp-08 Rng-41 Prop Addn: 6780 Road 10 67735
264.25 Cotten, Robert L & Sandra L Subd-First Addn to Goodland Blk-25 Lot-33 Prop Addn: 520 W 13th St 67735
179.34 Cramer, Cramer, Walter & Wilson Partners Sec-27 Twp-08 Rng-42
270.35 Daise, Paul K Family Rev TR Sec-25 Twp-07 Rng-42 Prop Addn: 6995 Road 6 67741
135.82 Daise, Randall L Sec-19 Twp-06 Rng-41 Prop Addn: Co Rd
594.01 Daniels, Kenneth D Subd-Goodland Original Town Blk-63 Prop Addn: 1116 Broadway Ave 67735
87.34 Dankin, Lawrence Etal Subd-C K & N Addn to Goodland Blk-10 Lot-4 Prop Addn: 1516 Sherman Ave 67735
77.35 Davis, Tarry A Sec-30 Twp-08 Rng-39 Prop Addn: Co Rd
3.61 Egan, Thomas J Sec-29 Twp-08 Rng-40 Prop Addn: Co Rd
2.77 Elliott Burks, Marie Sec-15 Twp-10 Rng-40
12 Elliott, Cecily Sec-24 Twp-10 Rng-41
2.40 Elliott, Cecily Sec-27 Twp-10 Rng-40
2.77 Elliott, Cecily Sec-15 Twp-10 Rng-40
5.30 Elliott, J C & Benton, Laura Edith Sec-31 Twp-10 Rng-40
57.36 Emig, Norma L Sec-05 Twp-10 Rng-40
38.09 First National Bank Sec-27 Twp-08 Rng-42
141,458.74 First National Bank of Goodland Subd-Goodland Energy Center Lot-6 Prop Addn: 101 Sunflower Dr 67735
246.46 Fisher, Gary Leon & Brenda Sue Subd-First Addn to Goodland Blk-8 Lot-4 Prop Addn: 903 W 9th St 67735
212.88 Flores, Irma Subd-C K & N Addn to Goodland Blk-5 Lot-11 Prop Addn: 1526 Caldwell Ave 67735
988.49 Flying Anchor Rev Liv TR Subd-3rd Addn to Goodland Blk-26 Lot-7 Prop Addn: 620 E 15th St 67735
121.95 Flying Anchor Rev TR Sec-09 Twp-09 Rng-39 Prop Addn: Co Rd
125.12 Flying Anchor Rev Liv TR Sec-09 Twp-09 Rng-39 Prop Addn: Co Rd
361.62 Flying Anchor Rev TR Sec-10 Twp-09 Rng-39 Prop Addn: Co Rd
431.06 Flying Anchor Rev Liv TR Sec-10 Twp-09 Rng-39 Prop Addn: Co Rd
317.53 Flying Anchor Rev TR Sec-10 Twp-09 Rng-39 Prop Addn: 2215 Road 61 67735
114.72 Flying Anchor Rev TR Young, Leonard & Wilma Sec-10 Twp-09 Rng-39 Prop Addn: Co Rd
234.90 Flying Anchor Rev Liv TR Sec-10 Twp-09 Rng-39 Prop Addn: Co Rd
85.95 Foster, Travis J Subd-Goodland Original Town Blk-57 Prop Addn: W 11th St 67735
198.95 Galli, Jason C Subd-2nd Addn TO Goodland Blk-33 Prop Addn: 222 W 6th St 67735
316.76 Gamboa, Eraclio & Nicole Subd-Rule's 1st Add to Kanorado Blk-17 Lot-1 Prop Addn: 310 Locust St 67741
220.30 Garza, Vicenta Ray Subd-2nd Addn to Goodland Blk-14 Lot-5 Prop Addn: 208 Caldwell Ave 67735
1,076.09 GEC II LLC Subd-Goodland Energy Center Lot-22 Prop Addn: Railroad Dr 67735
1,074.38 GEC II LLC Subd-Goodland Energy Center Lot-21 Prop Addn: Railroad Dr 67735
1,330.39 GEC II LLC Subd-Goodland Energy Center Lot-20 Prop Addn: Railroad Dr 67735
994.90 GEC II LLC Subd-Goodland Energy Center Lot-19 Prop Addn: Railroad Dr 67735
1,091.46 GEC II LLC Subd-Goodland Energy Center Lot-15 Prop Addn: Energy Park DR
10,136.75 GEC II LLC Subd-Goodland Energy Center Lot-18 Prop Addn: 101 Energy Park Dr 67735
647.65 George, Harold A LLC Sec-10 Twp-07 Rng-42 Prop Addn: 7245 Road

4 67741
421.39 Gomez, Maria R Subd-Kohler First Addn to Goodland Blk-2 Prop Addn: 104 College Ave 67735
3,451.07 Goodland Grain LLC Subd-Goodland Industrial Park Blk-3 Lot-3 & 6 Prop Addn: Co Rd
465.13 Gould, Mark Allen & Mielani Leann Subd-3rd Addn to Goodland Blk-11 Lot-23 Prop Addn: 1003 Cherry Ave 67735
252.35 Gutierrez, Roberto A & Josefa G Subd-Replate Blk 1 Cody's Addn Blk-1 Lot-18 Prop Addn: 104 Center St 67741
379.24 H & W Enterprises, LLC Sec-23 Twp-10 Rng-37
1,861.90 H O N I Inc & H W P of Vero Beach Inc Subd-Goodland City Tracts Sec-19 Twp-08 Rng-39 Prop Addn: 516 W Hwy 24 67735
3.98 Hannan, Helen Sec-11 Twp-07 Rng-37
620.89 Harrington, Patricia M Subd-2nd Addn to Goodland Blk-44 Lot-10 Prop Addn: 722 Clark Ave 67735
404.30 Haynes, Tommy L & Retina A Subd-2nd Addn to Goodland Blk-3 Lot-13 Prop Addn: 117 Main Ave 67735
772.60 Heid, John & Madden, Shelly K Subd-Goodland Original Town Blk-66 Prop Addn: 121 W 11th St 67735
497.78 Heid, John & Madden, Shelly Subd-First Addn to Goodland Blk-35 Lot-18 Prop Addn: 620 W 14th St 67735
465.13 Heid, John & Madden, S K Subd-Goodland Sub of Blks to Orig Blk-75 Lot-11 Prop Addn: 1209 Broadway Ave 67735
360.53 Heier, Timothy R Subd-Eastridge Addn #1 Blk-4 Lot-2 Prop Addn: 804 Eustis Ave 67735
14.77 Helena Chemical Co Sec-19 Twp-08 Rng-38 Prop Addn: 6409 Road 25 67735
1,089.74 Hellerud, Thomas Lee Subd-3rd Addn to Goodland Blk-22 Lot-19 Prop Addn: 1309 Cherry Ave 67735
559.25 Hellerud, Timothy E Subd-C K & N Addn to Goodland Blk-18 Lot-8 Prop Addn: 1618 Caldwell Ave 67735
684.27 Hellman, Lauren & Rosalie Subd-Rule's 1st Add to Kanorado Blk-16 Lot-23 Prop Addn: 305 Locust St 67741
899.03 Hernandez, Benny J Subd-3RD Addn to Goodland Blk-2 Prop Addn: 602 E 9th St 67735
255.71 Hernandez, Reina Subd-Kohler First Addn to Goodland Blk-6 Lot-13 Prop Addn: 211 Caldwell Ave 67735
176.21 Hernandez, Rhonda Renee Subd-2nd Addn TO Goodland Blk-23 Lot-16 Prop Addn: 419 Grand Ave 67735
4,714.85 Hicks, Truman & Catherine-Subd-Sharp's Addn to Goodland Blk-9 Lot-14 Prop Addn: 1613 Colorado Ave 67735
363.11 Hillman, Craig L Subd-C K & N Addn to Goodland Blk-7 Lot-5 Prop Addn: 1516 Broadway Ave 67735
123.67 Hostetler, Brent Subd-First Addn to Goodland Blk-35 Lot-8 Prop Addn: 615 W 13th St 67735
133.64 Hostetler, Brent Subd-Beahm's Addn to Goodland Blk-48 Prop Addn: 721 Cherry Ave 67735
114.48 Hostetler, Brent Subd-2nd Addn to Goodland Blk-20 Lot-1 Prop Addn: 304 Sherman Ave 67735
242.26 Hostetler, Brent Subd-2nd Addn to Goodland Blk-37 Lot-13 Prop Addn: 322 W 7th St 67735
953.46 Howard, Clarence L Subd-First Division of First Addn Blk-8 Lot-3 Prop Addn: 1506 Kansas Ave 67735
802.92 Howard, Clarence L, Jr Etal Subd-Sharp's Addn to Goodland Blk-9 Lot-1 Prop Addn: 1602 Texas Ave 67735
82.19 James, Curt Subd-Kanorado Original Town Blk-3 Lot-8 Prop Addn: 208 Locust St 67741
2,979.79 Jennings, Jeremiah Thomas Koehler, Colleen Subd-Goodland Original Town Blk-59 Lot-11 Prop Addn: 1024 Main Ave 67735
532.35 Johnson, Leon L & Carol J Subd-2nd Addn to Goodland Blk-17 Prop Addn: 318 Broadway Ave 67735
.36 Jones, Annette Rae Sec-24 Twp-10 Rng-41
8.18 Jones, Annette Rae Sec-15 Twp-10 Rng-40
7.10 Jones, Annette Rae Sec-27 Twp-10 Rng-40
214.61 Kear, Lonny Lee & Jodie A Subd-Sharp's Addn to Goodland Blk-8 Lot-9 Prop Addn: 525 W 15th St 67735
128.88 Kimminau, Lyle Subd-First Addn to Goodland Blk-10 Lot-4 Prop Addn: 705 W 9th St 67735
571.07 Klinge, Dennis & Peggy Sec-33 Twp-08 Rng-38 Prop Addn: 6220 Road 28 67735
860.29 Koch, Diane L Subd-C K & N Addn to Goodland Blk-3 Lot-25 Prop Addn: 1503 Cherry Ave 67735
482.17 Lance, Leroy & Ruby I (TOD) Subd-First Addn to Goodland Blk-35 Prop Addn: 622 W 14th St 67735
94.74 Ledesma, Antonio Sec-29 Twp-08 Rng-42 Prop Addn: Hwy 24 67741
88.26 Ledesma, Antonio Sec-29 Twp-08 Rng-42 Prop Addn: 265 US Hwy 24 67741
219.41 Lester, Ron & Joyce E Subd-Goodland Original Town Blk-84 Prop Addn: 1408 Grand Ave 67735
161.86 Liby, Denise (Schmidt) Etal Sec-34 Twp-08 Rng-42 Prop Addn: Co Rd
561.79 Linnell, Beckie Sec-05 Twp-08 Rng-40 Prop Addn: 6702 Road 15 67735
706.30 Lucero, Charles L Subd-C K & N Addn to Goodland Blk-6 Prop Addn: 1525 Broadway Ave 67735
33.78 M & M Farms TR Sec-22 Twp-08 Rng-38 Prop Addn: Co Rd
670.12 M & M Farms TR Subd-Edson Original Town Blk-1 Sec-22 Twp-08 Rng-38 Prop Addn: Co Rd
1,611.78 M & M Farms TR Subd-Edson Original Town Blk-1 Sec-22 Twp-08 Rng-38 Prop Addn: Co Rd
40.69 M D & M Liv TR Sec-22 Twp-08 Rng-38 Prop Addn: Co Rd
82.25 M D & M Liv TR Sec-22 Twp-08 Rng-38 Prop Addn: Co Rd
107.10 M D & M Liv TR Sec-22 Twp-08 Rng-38 Prop Addn: Co Rd
10,075.27 MAA Goodland Hospitality LLC Subd-Goodland City Tracts Sec-25

Twp-08 Rng-40 Prop Addr: 2420 Commerce Rd 67735
474.64 McGlone, Michael Charles Subd-Goodland Original Town Blk-90 Prop Addr: 309 E 14th St 67735
346.47 Mendiola, Jorge & Araceli Subd-3rd Addn to Goodland Blk-13 Prop Addr: 1116 Cherry Ave 67735
3,012.20 Merchant, Mayuri & Sailesh Subd-Goodland City Tracts Sec-29 Twp-08 Rng-39 Prop Addr: 811 E Hwy 24 67735
554.67 Migchelbrink, Cary C; Vallejo, Tonia S & Sec-16 Twp-07 Rng-38 Prop Addr: Co Rd
836.30 Miller, Kenneth P Subd-2nd Addn to Goodland Blk-37 Lot-1 Prop Addr: 602 Sherman Ave 67735
249.76 Miller, Rodney B Etal Subd-2nd Addn to Goodland Blk-30 Lot-16 Prop Addr: 515 Broadway Ave 67735
44.39 MJR Investments, LLC Sec-18 Twp-07 Rng-40
12.73 MJR Investments, LLC Sec-19 Twp-06 Rng-41
50.82 MJR Investments, LLC Sec-05 Twp-07 Rng-41
50.82 MJR Investments, LLC Sec-02 Twp-07 Rng-42
12.73 MJR Investments, LLC Sec-14 Twp-07 Rng-42
50.82 MJR Investments, LLC Sec-33 Twp-07 Rng-42
12.77 MJR Investments, INC Sec-05 Twp-06 Rng-37
38.09 MJR Investments, LLC Sec-13 Twp-07 Rng-40
286.50 Mojica, Isreal & Mojica, Samantha Subd-Sharp's Addn TO Goodland Blk-12 Lot-16 Prop Addr: 1615 Montana Ave 67735
208.47 Montoya, Jose J & Esther Subd-Kanorado Original Town Blk-11 Prop Addr: Walnut St 67741
429.06 Moreno, Jesus F Barrera Moreno, David F Barrera Subd-Goodland City Tracts Sec-19 Twp-08 Rng-39 Prop Addr: 1619 Kansas Ave 67735
674.35 Mote, O D Subd-2nd Addn to Goodland Blk-11 Lot-16 Prop Addr: 211 Center Ave 67735
804.56 Musil, Melvin L JR & Cynthia Lynn Subd-Goodland Original Town Blk-71 Prop Addr: 312 W 13th St 67735
71.67 Nemechek, Melvin R & Nemechek, Victor M Sec-32 Twp-09 Rng-39 Prop Addr: Co Rd
101.66 New Goodland Energy Center LLC Sec-20 Twp-08 Rng-40 Prop Addr: Co Rd
2.99 New Goodland Energy Center LLC Subd-Goodland Energy Center Lot-26 Prop Addr: Winderidge Dr
2.99 New Goodland Energy Center LLC Subd-Goodland Energy Center Lot-25 Prop Addr: AgriPower Dr 67735
2.99 New Goodland Energy Center LLC Subd-Goodland Energy Center Lot-11 Prop Addr: Windridge Dr
131.75 New Goodland Energy Center LLC Subd-Goodland Energy Center Lot-12 Prop Addr: AgriPower Dr 67735
3.36 New Goodland Energy Center LLC Subd-Goodland Energy Center Lot-10 Prop Addr: Energy Park Dr
3.36 New Goodland Energy Center LLC Subd-Goodland Energy Center Lot-1 Prop Addr: Windridge Dr
3.36 New Goodland Energy Center LLC Subd-Goodland Energy Center Lot-2 Prop Addr: AgriPower Dr 67735
3.36 New Goodland Energy Center LLC Subd-Goodland Energy Center Lot-9 Prop Addr: Energy Park Dr
3.36 New Goodland Energy Center LLC Subd-Goodland Energy Center Lot-8 Prop Addr: Energy Park Dr
3.36 New Goodland Energy Center LLC Subd-Goodland Energy Center Lot-4 Prop Addr: Synergy Dr
2.99 New Goodland Energy Center LLC Subd-Goodland Energy Center Lot-13 Prop Addr: Energy Park Dr
2.99 New Goodland Energy Center LLC Subd-Goodland Energy Center Lot-24 Prop Addr: Railroad Dr 67735
4,559.75 New Goodland Energy Center LLC Subd-Goodland Energy Center Lot-16 Prop Addr: 201 Energy Park Dr 67735
4,476.51 New Goodland Energy Center LLC Subd-Goodland Energy Center Lot-5 Prop Addr: Energy Park Dr 67735
144,506.48 New Goodland Energy Center LLC Subd-Goodland Energy Center Lot-5 Prop Addr: 200 Energy Park Dr 67735
219.49 Northdurft, Bradley J Subd-C K & N Addn to Goodland Blk-10 Lot-6 Prop Addr: 1524 Sherman Ave 67735
613.26 Northern Trust Co (The) Sec-14 Twp-08 Rng-42 Prop Addr: Co Rd
259.59 Northern Trust Co (The) Sec-29 Twp-06 Rng-40 Prop Addr: Co Rd
311.72 Northdurft, Jerome D & Virginia L Sec-26 Twp-08 Rng-39 Prop Addr: 2326 Road 63 67735
57.22 Orchard, Gary Subd-Hartstine's 2nd to Kanorado Blk-20 Lot-23 Prop Addr: Oak St 67741
213.64 Orchard, Gary Subd-Hartstine's 2nd to Kanorado Blk-21 Lot-7 Prop Addr: Oak St 67741
27.24 Orchard, Gary Subd-Hartstine's 2nd to Kanorado Blk-21 Lot-25 Prop Addr: Western Ave 67741
38.09 Ormsby Land & Mfg. Co. Sec-34 Twp-09 Rng-38
464.57 Pace, Charles Michael Subd-Replate Blks 6-9 Kanorado Blk-8 Lot-39 Prop Addr: 115 Western St 67741
47.61 Pancake, Amy J & Gary D Sec-03 Twp-09 Rng-40
177.70 Paterniti, Tim Subd-C K & N Addn to Goodland Blk-18 Prop Addr: 1601 Clark Ave 67735
136.45 Pena, Valentino & Kristi Subd-3rd Addn to Goodland Blk-12 Lot-7 Prop Addr: 1016 Cherry Ave 67735
209.67 Peter, Arlene J Rev TR Sec-09 Twp-06 Rng-40 Prop Addr: CO RD
36.53 Peters, Linda Jo Sec-27 Twp-07 Rng-38
185.28 Phillips, Ed Subd-First Addn to Goodland Blk-39 Lot-11 Prop Addr: 724 W 15th St 67735

184.78 Potterf, Andrew L
Subd-Sharp's Addn to Goodland Blk-3 Lot-7 Prop Addr: 1536 Syracuse Ave 67735
8.31 Power Drive Supply LLC Subd-Replate Blks 6-9 Kanorado Blk-8 Lot-27 Prop Addr: 107 Western St 67741
75.96 R C Enterprises of Brewster, KS, LLC Sec-25 Twp-10 Rng-37
4,964.40 Rasure, Daniel P Strnad, Jill E Subd-Sugar Hills Golf Club Sec-21 Twp-08 Rng-40 Prop Addr: 6488 Road 16 67735
95.45 Reyna, Jimmy & Dominga Subd-Sharp's Addn to Goodland Blk-8 Lot-3 Prop Addr: 1612 Colorado Ave 67735
740.45 Reyna, Jimmy G & Dominga Subd-Sharp's Addn to Goodland Blk-8 Lot-6 Prop Addr: 1624 Colorado Ave 67735
37.03 Rooney, Patricia A aka Kelly-Brennan, Briahn Sec-27 Twp-09 Rng-37
36.41 Sanderson, Kenneth B Sec-02 Twp-09 Rng-38 Prop Addr: Co Rd
408.66 Schaffer, Dale & Tasha Subd-Goodland Original Town Blk-67 Lot-11 Prop Addr: 223 W 11th St 67735
349.58 Schaffer, Dale & Tasha Subd-2nd Addn TO Goodland Blk-17 Prop Addr: 324 Broadway Ave 67735
245.88 Schaffer, Dale & Tasha Subd-Goodland Sub of Original Town Blk-1 Lot-1 Prop Addr: 1502 Caldwell Ave 67735
1,170.86 Schiefen, Patricia A Subd-Goodland Original Town Blk-59 Lot-15 Prop Addr: 1019 Center Ave 67735
100.63 Schroeder, Carlene Subd-Sharp's Addn to Goodland Blk-1 Lot-6 Prop Addr: 1530 Kansas Ave 67735
47.89 Schroeder, Carlene Subd-Sharp's Addn to Goodland Blk-1 Lot-7 Prop Addr: Kansas Ave 67735
204.56 Scott, Arnold Subd-2nd Addn to Goodland Blk-19 Lot-18 Prop Addr: 315 Sherman Ave 67735
181.33 Scott, Arnold R Subd-First Division of First Addn Blk-9 Prop Addr: 1503 Syracuse Ave 67735
282.33 Scott, Arnold R Subd-2nd Addn to Goodland Blk-48 Lot-17 Prop Addr: 709 Grand Ave 67735
229.39 Scott, Arnold R Subd-Sharp's Addn to Goodland Blk-2 Prop Addr: 1505 Syracuse Ave 67735
402.72 Shepard, Dan L Subd-3rd Addn to Goodland Blk-12 Lot-23 Prop Addr: 1001 Caldwell Ave 67735
1,023.65 Short, Tamara Subd-First Addn to Goodland Blk-38 Lot-1 Prop Addr: 1420 Montana Ave 67735
17,446.72 Shreeji Motel Inc Subd-Goodland City Tracts Sec-25 Twp-08 Rng-40 Prop Addr: 2218 Commerce Rd 67735
493.63 Slusher, Harold Wayne, II Subd-3rd Addn to Goodland Blk-22 Lot-8 Prop Addr: 528 E 14th St 67735
260.67 Smith, Chandler Etal Subd-3rd Addn to Goodland Blk-11 Prop Addr: 517 E 10th St 67735
739.47 Smith, Chandler Etal Subd-3rd Addn to Goodland Blk-20 Lot-13 Prop Addr: 1223 Caldwell Ave 67735
3,496.10 Smith, Clifford E Subd-C K & N Addn to Goodland Blk-26 Lot-1 Prop Addr: 421 E 17th St 67735
129.54 Smith, Clifford E Subd-C K & N Addn to Goodland Prop Addr: E 17th St 67735
621.91 Smith, James A & Velda O Sec-31 Twp-08 Rng-39 Prop Addr: 3353 Sunset Dr 67735
35.42 Smith, Tillie Etal Subd-Sharp's Addn TO Goodland Blk-14 Lot-1 Prop Addr: Montana Ave 67735
338.52 Smith, Tillie L (TOD) Subd-3RD Addn to Goodland Blk-7 Prop Addr: 604 E 10th St 67735
838.02 Somers, Brian K & Carolyn R Subd-2nd Addn to Goodland Blk-16 Prop Addr: 302 Clark Ave 67735
309.61 Soper, Jeff Subd-First Addn to Goodland Blk-12 Lot-32 Prop Addr: 518 W 10th St 67735
206.58 Soto, Erika Perez Etal Subd-3rd Addn to Goodland Blk-23 Prop Addr: 1310 College Ave 67735
36.53 Stampler, Judith Sec-27 Twp-07 Rng-38
36.41 Stampler, Ronald Sec-34 Twp-07 Rng-38
31.88 Stasser, M Merle Sec-19 Twp-07 Rng-41 Prop Addr: Co Rd
31.88 Stasser, M Merle Sec-20 Twp-07 Rng-41 Prop Addr: Co Rd
76.32 Stasser, M Merle Sec-29 Twp-07 Rng-41 Prop Addr: Co Rd
135.05 Stasser, M Merle Sec-30 Twp-07 Rng-41 Prop Addr: Co Rd
236.83 Stegman, Dennis W Etal Sec-30 Twp-08 Rng-39 Prop Addr: Hwy 24 67735
38.09 Strange, Dorothy Robert & Elvin E Sec-10 Twp-09 Rng-38
2,096.28 Studer, Roger J & Carmen M

Subd-First Addn to Goodland Blk-34 Lot-1 Prop Addr: 1310 Syracuse Ave 67735
11,843.99 Sunrich Aquisition Inc Subd-Goodland Industrial Park Blk-2 Lot-2 Prop Addr: 1701 Industrial Loop 67735
142.01 Sunrich LLC Subd-Goodland City Tracts Sec-24 Twp-08 Rng-40 Prop Addr: Hwy 27 67735
1,407.39 Tabor, Misty D Subd-First Addn to Goodland Blk-6 Prop Addr: 823 Cattletail Ave 67735
358.52 Tracy, Mary Lou Subd-Goodland Sub of Blks to Orig Blk-78 Prop Addr: 1310 Clark Ave 67735
10,012.69 Trandel, Thomas Subd-N Main Addn Sec-18 Twp-08 Rng-39 Prop Addr: 214 N Main Ave 67735
277.06 Turner, Rose M Subd-Kohler First Addn to Goodland Blk-2 Prop Addr: 101 Walnut Ave 67735
262.40 Urban, Rocky E Subd-2nd Addn to Goodland Blk-4 Lot-11 Prop Addr: 117 Center Ave 67735
788.77 Valdez, Donald & Robin Subd-Replate Blks 6-9 Kanorado Blk-7 Lot-17 Prop Addr: 203 Western St 67741
261.02 Vallejo, Tonia S & Stephen C Sec-08 Twp-07 Rng-38 Prop Addr: Co Rd
653.68 Varney, Lisa Subd-Goodland Original Town Blk-70 Lot-10 Prop Addr: 414 W 13th St 67735
814.08 Walker, Dr Andy & Vickie Subd-First Addn to Goodland Blk-24 Prop Addr: 1108 Kansas Ave 67735
309.31 Walker, Waylon & Irene Subd-2nd Addn to Goodland Blk-27 Lot-4 Prop Addr: 410 Clark Ave 67735
407.02 Warren Rick Subd-2nd Addn to Goodland Blk-22 Prop Addr: 423 Kansas Ave 67735
981.18 Weiss, Ronald Lee Subd-C K & N Addn to Goodland Blk-11 Lot-12 Prop Addr: 1532 Grand Ave 67735
4,374.83 West, Alex D & Pamela S Subd-Sharp's Addn to Goodland Blk-13 Lot-1 Prop Addr: 531 W 17th St 67735
902.64 Widner, Bob G Subd-C K & N Addn to Goodland Blk-10 Lot-20 Prop Addr: 1527 Grand Ave 67735
486.81 Wieland, R Scott Sec-12 Twp-10 Rng-37 Prop Addr: Co Rd
139.84 Wilson, James L Subd-First Addn to Goodland Blk-36 Prop Addr: 526 W 14th St 67735
691.88 Winter, Larry A DVM Sec-29 Twp-08 Rng-42 Prop Addr: 245 Road 63 67741
542.60 Witzel, Chandra Subd-Rule's 1st Add to Kanorado Blk-19 Lot-14 Prop Addr: 504 Front St 67741
752.97 Witzel, Chandra & Mueller, Natasha Subd-Hartstine's 2nd to Kanorado Blk-32 Lot-17 Prop Addr: 412 Rule St 67741
360.39 Xarhis, John Alex & Kristina-Subd-Goodland Original Town Blk-80 Prop Addr: 120 W 14th St 67735
245.02 Yanez, Jeannie Murry &/or Villalera Toni Esmerada Subd-Kohler First Add to Goodland Blk-6 Lot-15 Prop Addr: 227 Caldwell Ave 67735
227.80 Yarbrough, Walter & Yarbrough, Matilda Subd-First Addn to Goodland Blk-36 Lot-14 Prop Addr: 527 W 13th St 67735
1,215.13 Yarbrough, Walter & Mary M Subd-C K & N Addn to Goodland Blk-15 Prop Addr: 1602 Main Ave 67735
292.09 Yarbrough, Walter Subd-Sharp's Addn to Goodland Blk-7 Lot-5 Prop Addr: 1622 Wyoming Ave 67735
310.18 Yarbrough, Walter Subd-Sharp's Addn to Goodland Blk-8 Lot-9 Prop Addr: 1629 Wyoming Ave 67735
539.52 Yarger, Michael J Subd-Goodland City Tracts Sec-20 Twp-08 Rng-39 Prop Addr: 1801 Caldwell 67735
1,450.29 Yarger, Michael J Sec-20 Twp-08 Rng-39 Prop Addr: 1207 E 8th St 67735
349.23 Yarger, Michael J & Cindie J Sec-02 Twp-07 Rng-39 Prop Addr: Co Rd
198.43 Yarger, Michael J & Cindie J Sec-11 Twp-07 Rng-39 Prop Addr: Co Rd
2,050.65 Yarger, Mike & Cindy Subd-Goodland City Tracts Sec-20 Twp-08 Rng-39 Prop Addr: 1825 Cherry Ave 67735
593.31 Young, Leonard V & Wilma I Sub

WANTED
Custom haying service. Now baling failed corn and milo. Can also do CRP cane or alfalfa. Reasonable rates, turnkey job, can travel. Call Tadd Neitzel at (785) 332-7004. -8-13-9-13-

WANTED: Old comic books that originally sold for 10-12¢ each when new. Good cash buyer. Call Tim at (303) 517-9875. -8-13-8-16-

Want to buy John Deere diesel engines, running or not. (785) 263-6275. -8-6-9-6-

Junk batteries, non-ferrous metals and iron. Darrel Bowen. Phone 785-899-2578. -tfn-

NOTICE
Plum Creek - 40% Off Missy and Women's summer apparel! New fall arriving daily! Colby, Kansas. -8-13-8-23-

American Profile Cookbooks Available! Stop by The Goodland Star-News. -tfn-

Advertising Deadlines (box and line ads): Tuesday edition (Friday at noon). Friday edition (Wednesday at noon). Please check your ad the first time it runs. If you find an error, please call us at (785) 899-2338 so it can be corrected, since we will not be responsible for errors after that first day. Thank you! The Goodland Star-News.

HELP WANTED
CCA CARRIER POSITION at the Goodland Post Office. PART-TIME. \$15 per hour. Call (785) 899-7212 for more information. -8-13-8-16-

Production framer with helper and tools. Pays hourly. 6 day job. Call (307) 286-6981. -8-13-8-16-

Part-time CNA wanted for Goodland Home Health. May pick up application at 655-B East 22nd in Goodland. -7-19-8-19-

HELP WANTED: Competitive CaseIH Dealership looking for full-time Sales People. Competitive wages, benefits, health and retirement available. Call Ag Power Equipment Co. in Goodland at (785) 899-3432. -7-12-8-12-

PSI Transport is always looking for good company livestock and grain haulers as well as shop mechanics. Competitive pay, life/health/dental benefits and bonus program available. EOE. (785) 675-3477. -6-10-TFN

FOR SALE
1969 Holiday Rambler Travel Trailer. 27 feet, fully self-

contained, full size living room, kitchen, twin beds, full size bathroom. Call (785) 821-3211. -8-9-8-13-

Side by side Whirlpool refrigerator. \$350. Call in evenings, (785) 891-3761. -7-26-8-13-

LAND FOR SALE: 310 acres of grassland 9 miles south of Stratton. For sale by owner. Water will on property. For more information call (303) 522-5346. -7-12-8-12-

FIREWOOD FOR SALE IN GOODLAND. Call (785) 890-7224. -12-11-tfn-

FOR RENT
Nice 2-story, 3 bed, 1 bath home in Goodland. Garage, central heat and air, large kitchen and dining room. \$650. Call Gary at (303) 941-2369. -8-13-8-16-

3 bedroom house, 1 bedroom apartment available soon in Goodland. Also very nice 3 bedroom house/apartment with furnished commons area for students/individuals or family. High quality living conditions and affordable for responsible tenants. Call (785) 821-0106. -7-23-8-23-

Houses and apartments in Goodland, KS. All sizes. Call for details. (785) 890-6538. -6-12-tfn

Houses and apartments. Cole Real Estate. 785-899-2683. -tfn-

SERVICES
Beckman Fencing. Need a fence? We can build it! Barbwire, pipe corrals, continuous panels, chain link, privacy fence...also any concrete flatwork. Contact Jared at (785) 672-7607. -7-

26-8-26-
Failed corns, custom swathing and baling. 30ft. draper swather, no crimping. Save your dried out leaves. Will do on shares or buy standing corn in the field. Call (785) 332-5588 or (785) 772-5040. -7-26-8-20-

MLH Vacuum Repair & Maintenance Service. (785) 899-5222. All makes and models, reasonable prices, free estimates, plus pickup and delivery available. -7-19-8-19-

Burlington-Goodland area. Residential overhead door service and repair, 20 years experience. Call Gary at (719) 350-0705. -7-12-tfn

CAT'S TNT for jewelry, vinyl graphic designs, massages, quilting and more! Stop by 1018 Main, Goodland - 3-23-tfn

kansas classifieds

Help Wanted
Addiction Counselor - Topeka Correctional Facility. LAC required. Meet drug policy/security check. Mid 40's & excellent benefits. See: www.mirrorinc.org Resume: Janet@jhaynes@mirrorinc.org, call (785) 559-5044. EOE

Help Wanted
FULLTIME POLICE OFFICER, Council Grove. KLETC certified preferred. Applications to

City Hall. P.O. Box 313, Council Grove, KS 66846, 620-767-5417 Drug, alcohol prescreening required, EOE.

Help Wanted
NOW HIRING! Truck Driving School Instructors. JOIN CRST's brand new training school in Cedar Rapids, Iowa! Relocation assistance provided. Call: 866-397-7407; email: mknot@crst.com

Help Wanted
"Partners In Excellence" OTR Drivers APU Equipped Pre-Pass EZ-pass passenger policy. 2012 & Newer equipment. 100% NO touch. Butler Transport 1-800-528-7825

Help Wanted/Truck Driver
Drivers: CDL-A. Train and work for us! Professional, focused CDL training available. Choose Company Driver, Owner Operator, Lease Operator or Lease Trainer. (877) 369-7885 www.CentralTruckingDrivingJobs.com

Help Wanted/Truck Driver
DRIVERS: Transport America has Dedicated and Regional openings! Variety of home time options; good miles & earnings. Enjoy Transport America's great driver experience! TAdriers.com or 866-204-0648.

Help Wanted/Truck Driver
Exp. Flatbed Drivers: Regional

opportunities now open with plenty of freight & great pay! 800-277-0212 or primeinc.com

Help Wanted/Truck Driver
Experienced Drivers - Excellent Regional Runs! Great Home Time & Benefits! Up to \$.40 Per Mile, Weekly Pay, & Late Model Equipment. Arnold Transportation www.drivearnold.com 888-742-8056

Misc.

FOR RENT

Westside Apartments on Cattletrail has (2) 3 bedroom units for rent. These units come furnished with all of the kitchen appliances and a washer/dryer. Please contact NW Kansas Housing at (785) 421-2151 or nwkpdc@ruraltel.net for more information.

For Sale Manufactured & Modular Homes New & Used, Singles and Doubles. Use your Land, Cash, or combination

of both for Down Payment. Special Financing for ALL Types of Credit! Habla Espanol! 866-858-6862

USD 352-paraprofessionals needed

USD 352 is taking applications for the following positions:
Paraprofessionals (7-hours per day; Monday through Friday). Benefits include: single health insurance plan; paid sick and personal leave. Applications may be picked up at the Administration Office, 1312 Main, Goodland. USD 352 is an Equal Opportunity Employer.

Sponsored by

The Goodland Star-News

1205 Main
Goodland, Kan. 67735
899-2338

Maintenance Worker Needed

The City of Wathena, Kansas is currently accepting applications for the position of Maintenance Worker. This position has responsibilities with the city's electric, water, and wastewater utilities as well as street maintenance. Experience with electrical work preferred. Certification as water and/or wastewater operator desired (or the commitment to obtain the certifications as soon as possible after start date). Valid drivers licenses. High school diploma or GED required. Salary commensurate with experience. Benefits include vacation, sick leave, KPERS retirement, medical and dental. Position open until filled. Send resume or applications are available at the City Hall in Wathena, 206 St. Joseph Street P.O. Box 27, Wathena, KS 66090. 785-989-4711. EOE.

HELP WANTED

Hiring for Maintenance, plant operator, Equipment operator, truck driver and a Feed Sales. These are full-time positions with competitive wages and benefits. Applications available online at: www.wpellc.com or you can pick up an application at:
3022 County Rd 18
Oakley, KS 67748
Phone: 785-672-8810

Western Plains Energy, LLC

JOIN A WINNING TEAM

Are you looking for a rewarding career?

ATWOOD

- Store Manager
- Asst. Store Manager
- Kitchen Help
- Cashier

GOODLAND

- Store Manager
- Asst. Store Manager
- Kitchen Help
- Cashier
- Delivery Driver

COLBY

- Delivery Driver

OAKLEY

- Store Manager
- Asst. Store Manager
- Kitchen Help
- Cashier

Full-time & Part-time hours available. Must be able to work weekends & Holidays.

Check out these benefits:

- Advancement Opportunities
- Medical/Dental Insurance
- 401(k) Savings Plan
- Flexible Spending Account
- Casey's Stock Purchase Plan
- Paid Training
- Vacation/Sick Leave

Apply at Individual Store or online at www.caseys.com
EOE

CASEY'S GENERAL STORE

Time for a New Career?

The Goodland Star-News is looking for a **FULL TIME ADVERTISING EXECUTIVE** to join our team selling advertising for Nor'West Newspapers. Work week is 40 hours. Computer skills are helpful but not required. Must have good communication skills, excellent customer service skills with attention to detail, and enjoy a fast-paced atmosphere.

Send a resume to:
Kevin Bottrell, Editor,
1205 Main, Goodland, KS 67735,
or apply in person. No calls please.

The
Goodland Star-News
1205 Main, Goodland, KS 67735

Leaning into the turn



Motorcycle riders rounded the first corner at the Sherman County Speedway on Friday during the I-70 Flat Track Racing Series. These riders will compete in Colby, Stockton and Hays throughout the rest of the summer. This is the first time in many years that Goodland has been the host for motorcycle racing.
Photo by Kevin Bottrell/The Goodland Star-News

Country Legends

www.catcountry.org



Fun on the Farm Jamboree

at the Sherman Theatre, Goodland, KS

Saturday, October 26, 2013, shows at 2 p.m. and 7 p.m. MT

Featuring Georgette Jones and Country Legend T.G. Sheppard

**\$25 TICKETS ON SALE NOW AT
THE GOODLAND STAR-NEWS!**

The
Goodland Star-News

1205 Main Avenue, Goodland, KS 67735 • Ph: (785) 899-2338

Win The Fight Against Cancer NATURALLY.org

A non-profit organization providing the public with **FREE** information, Amazon anti-cancer books and more!

Visit our site today to see how we can make a difference in your life!



The Goodland Star-News Ad Deadlines

For Tuesday papers

Friday Noon

For Friday papers

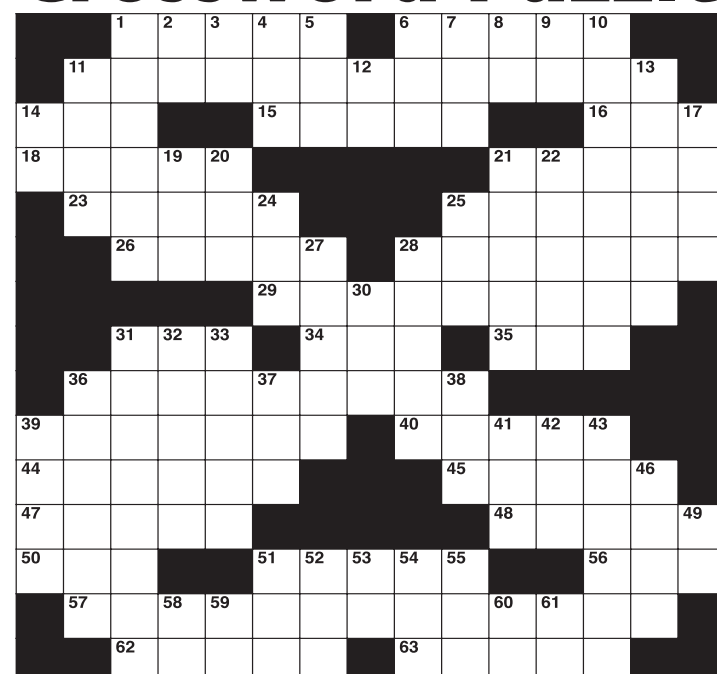
Wednesday Noon

For Country Advocate

Friday Noon

You may call the ad in to (785) 899-2338 or stop by the Star-News at 1205 Main.

Crossword Puzzle



CLUES ACROSS

1. S.A. grassy plain
6. Condemnation
11. Twitter or Facebook
14. Chest muscle (slang)
15. Changed ocean level
16. Cause bodily suffering to
18. Red Jamaican tropical fruit
21. 3rd largest Swiss city (alt. sp.)
23. Bluish greens
25. Billowing clouds
26. Duchy princes
28. Sarcasms
29. Equal business associate
31. State certified accountant
34. Swiss river
35. Winged goddess of the dawn
36. Not a jet airplane
39. Ethically
40. Dark brownish black
44. Removed writing
45. Skill in an occupation or trade
47. Standard unit of length
48. Indescribably bad
50. ___ Lanka
51. Locution
56. Printing liquid
57. Small travel cases
62. Old Norse poems
63. Mammy's partner

8. Expression of sympathy
9. The Show Me State
10. Expunctions
11. Subdivision of a denomination
12. Peace Garden State
13. One who causes death
14. The Keystone state
17. Hawaiian garlands
19. Cologne
20. Large northern deer
21. Montana's 5th largest city
22. Compound containing NH₂
24. Small unit of time (abbr.)
25. Auto
27. Saponaceous
28. Gulf of, in the N.E. Aegean
30. Golf score
31. A disease remedy
32. Dark gemstone
33. More competent
36. Matador
37. Not new
38. Political action committee
39. Microelectromechanical systems (abbr.)
41. Woman's undergarment
42. Enacted legislation
43. A representation of a person
46. Large casks for liquids
49. Abbr. for 50 across
51. Nursing group
52. Roman god of the underworld
53. Silver

1. Scarred face
2. Atomic #89
3. Great Lakes state
4. Tap gently
5. Boxer Muhammad
6. Quilting or spelling
7. Confined condition (abbr.)
54. Group health plan
55. The 7th Greek letter
58. ___, denotes past
59. Rural delivery
60. Oil company
61. Associated Press

The crossword puzzle brought to you by:

The
Goodland Star-News

1205 Main, Goodland, Kan. 67735

(785) 899-2338



SEE WHO'S NEW IN TOWN

Communities with a local newspaper are smarter, stronger and closer. Their citizens are connected to one another, and invested in what happens around them.

The
Goodland Star-News

Keep reading your local newspaper...
and keep your community going strong.



Goodland,
Kansas

www.shermancountyspeedway.com

Friday, Aug. 16: 7 PM MT

Saturday, Aug. 17: 6:30 PM MT

August 17: Bill Gray Memorial races

The 16th are make-up races. The 1200 Mini Sprints will be in Goodland on the 17th! Don't miss out on all the fun!



Pit Pass Pricing: \$25: 12 & up; \$10: 12 & Under
Grandstand Pricing: \$10: 13 & up • \$5: 6-12 • 5 & under FREE
Grandstands open at 2 p.m. MT • Pit Gates Open 12 p.m. MT
Hot Laps: 4:00 p.m. MT • Pit Gates Close At 5:30 p.m. MT

• IMCA MODIFIEDS • IMCA STOCKS
• ECONO'S • IMCA HOBBY STOCKS
• IMCA NORTHERN SPORT MODS

Track sponsors:
Budweiser and SCSRA

FUN BY THE NUMBERS

	9			6	5		3	
		5		9			8	
	3	1		8	2			
5	6	3			8	2		1
	8	7	5	2		3		9
4					3	5		
				3		8	1	
		6			7			
	4	8	2		9	6		3

Level: Beginner

Like puzzles? Then you'll love sudoku. This mind-bending puzzle will have you hooked from the moment you square off, so sharpen your pencil and put your sudoku savvy to the test!

Here's How It Works:

Sudoku puzzles are formatted as a 9x9 grid, broken down into nine 3x3 boxes. To solve a sudoku, the numbers 1 through 9 must fill each row, column and box. You can figure out the order in which the numbers will appear by using the numeric clues already provided in the boxes. The more numbers you name, the easier it gets to solve the puzzle!

The
Goodland Star-News
SUBSCRIBER

Verla Terry

You receive two free passes to see:

**GROWN UPS 2
(PG-13)**

Clip and bring to the show. Non Transferable



1203 Main Avenue • (785) 899-6103