

## weather report



**83°**

10 a.m.  
Monday

### Today

• Sunset, 7:53 p.m.

### Wednesday

• Sunrise, 5:53 a.m.

• Sunset, 7:52 p.m.

### Midday Conditions

• Soil temperature 74 degrees

• Humidity 60 percent

• Sky sunny

• Winds south 6 mph

• Barometer 30.02 inches

and falling

• Record High today 108° (1970)

• Record Low today 42° (1974)

### Last 24 Hours\*

High Sunday 88°

Low Sunday 65°

Precipitation none

This month trace

Year to date 7.83

Below normal 5.78 inches

### The Topside Forecast

Today: Mostly sunny with a 20 percent chance of showers and thunderstorms before 2 a.m., a high near 92, winds calm and a low around 63. Wednesday: Mostly cloudy with a 30 percent chance of showers and thunderstorms, a high near 78, winds out of the northeast at 10 to 15 mph and a low around 60.

### Extended Forecast

Thursday: Partly sunny with a 30 percent chance of showers and thunderstorms, a high near 80 and a low around 61. Friday: Mostly sunny with a 30 percent chance of showers and thunderstorms, a high near 84 and a low around 64. (National Weather Service)

## local markets

### 10 a.m.

Wheat — \$6.83 bushel

Posted county price — \$6.68

Corn — \$5.92 bushel

Posted county price — \$5.78

Milo — \$5.21 bushel

Soybeans — \$11.88 bushel

Posted county price — \$12.96

Millet — no bid

Sunflowers

Oil current crop — \$21.90 cwt.

Confection — no bid

Pinto beans — \$28

(Markets by Scouler Grain, Sun Opta, Frontier Ag and 21st Century Bean. These may not be closing figures.)

## inside today

More local news, views from your Goodland Star-News



## Parade results

The Northwest Kansas District Free Fair parade took place Saturday on Main Street. For results and photos, see Page 6.

## Large sink hole opens in Wallace County



This sinkhole — approximately 200 feet in diameter and 80 to 90 feet deep — opened last week in rural Wallace County, about eight miles north of the city of Wallace. The sinkhole opened on pasture land, about a mile from the nearest house and one mile from a previous sinkhole that had opened in 1926. The land has been closed off to visitors.

Photo by Keith Anglemeyer

## Glo Run planned in September

The City of Goodland, the Goodland Events Team and the Goodland Activities Center are glowing with excitement over Goodland's first 5k/1 Mile Glo Run, scheduled for Saturday, Sept. 28.

Run registration begins at 8 p.m. and the run is on from 9 to 10 p.m. The night run begins at Chambers Park, 13th and Sherman, and will take runners on a tour of Goodland. Runners have the choice of taking a one mile route or a 5K route and are encouraged to wear their brightest gear.

Glo Run registration is available online at cityofgoodland.org, goodlandgac.com and facebook.com/goodlandeventsteam as well as sponsor locations now through Sept. 28. Pre-registration is \$15; registration the day of the run is \$20. Registrations made prior to Sept. 6 will include a t-shirt.

The Glo Run is sponsored by the City of Goodland, Goodland Events Team, Goodland Activities Center, Sherman County Community Partnership for Prevention and Education, Gleason Chiropractic and *The Goodland Star-News*.

For more information about the run, check it out online at the City, Goodland Events Team or activities center websites or call Karen Anderson and Crystal Van Vleet at the City of Goodland, 890-4500 or Tess Smith at the activities center, 890-7242.



## Ambulance, fire station dedicated

Public officials, firefighters, emergency medical technicians, law enforcement officers and more turned out for the open house at the Wolak Emergency Services Building on Saturday. The open house celebrated the completion of renovation on the formerly empty building, which now houses the city and rural fire departments and the Northwest Kansas Emergency Medical Service.

Photo by Kevin Bottrell/The Goodland Star-News

## Horse show



Nicole Sederstrom trotted with her horse while judge Courtney Douthit looked on at the Horse Show on Friday at the Sherman County Fairgrounds. The Horse Show was one of several events held prior to Fair Week.

Photo by Kevin Bottrell/The Goodland Star-News

## Area attorney honored

Colby attorney Calvin Williams was honored with the Kansas Bar Association's Outstanding Service Award last month for service to the statewide bar.

Williams, a solo practitioner, is a criminal defense attorney, with 35 years of experience, the last 20 of which have been in Colby.

He is a 1978 graduate of Washburn University School of Law.

Currently, he serves as a commissioner for the Kansas Lawyers Assistance Program, chairman of the program's foundation and president of the Kansas Bar Association's

Solo and Small Firm Section.

Williams is past president of the Kansas Association of Criminal Defense Lawyers, and he served on Washburn Law's Board of Governors, as an adjunct professor for Washburn's Intensive Trial Advocacy Program and as a member of the Blue Ribbon Commission. Williams is an active member of numerous national criminal defense bar organizations.

The Outstanding Service Award is given to lawyers and judges for service to the legal profession or the Kansas Bar Association.

## Celebrate farmers markets

The U.S. Department of Agriculture on Saturday celebrated National Farmers Market Week with a kick-off event at the Columbia Heights Farmers Market in Washington, D.C.

"Farmers markets are an important public face for agriculture and a critical part of our nation's food system," said Secretary Tom Vilsack. "They provide benefits not only to the farmers looking for important income opportunities, but also help fill a growing consumer demand for

fresh, healthy foods."

The Goodland Farmers Market takes place from 8 to 11 a.m. Saturdays at Chambers Park.

Local food and direct marketing opportunities, including farmers markets, are one of the fastest growing segments of agriculture. According to the latest Census of Agriculture, direct sales of food products from farmers to individual consumers rose by nearly 50 percent between 2002 and 2007.

## Leadership Kansas stops in Goodland

By Kevin Bottrell

kbottrell@nwkansanews.com

Forty students from Leadership Kansas spent the better part of three days in Goodland and Colby last month, learning about economic, agricultural and educational issues in western Kansas.

This year's class includes Doug Gerber and Joseph Bain from Goodland. Each year about 500 people are nominated, while only 40 are selected during the application process. The students travel all over Kansas, learning about the different economic and social issues faced by Kansans.

Jennifer Sanderson, who served as local program chair and was in-

See LEADERSHIP, Page 5



## genesis and salvation army

Genesis and Salvation Army are available year round to help those in need. Call (785) 890-2299 to speak to a volunteer.

## activities

**Tours of the 1907 Victorian House** at 202 W. 13th are from **1 to 5 p.m. Wednesday through Monday.** Closed on Tuesday.

The **High Plains Museum**, 1717 Cherry Ave., is open from **9 a.m. to 5 p.m. Monday, Wednesday through Saturday and from 1 to 5 p.m. Sunday.** Closed Tuesdays.

The **Carnegie Arts Center** is open from **10 a.m. to 5 p.m. Tuesday through Saturday, 1 to 4 p.m. on Sunday and 1 to 6 p.m. on Monday** at 120 W. 12th. The center is always in need of hosts and hostesses on Sundays. New monthly exhibits and you are invited to visit the gift shop.

The **Goodland Public Library** is open from **10 a.m. to 7 p.m. Monday through Thursday** and from **10 a.m. to 5 p.m. Friday and Saturday.** For information call (785) 899-5461 or stop by the library.

**Big Brothers/Big Sisters** of Sherman County is seeking mentors and children to mentor. Call 890-3665.

The **Good Sam Family Support Council** meets at **7 p.m.** the second Thursday of every month at the Goodland Elks Lodge. Meetings are open to all interested people. For information call 890-3117 or 890-5936.

**Breast Cancer Support Group** meets at **5:30 p.m. the second Monday** of the month. Any woman with cancer is welcome. Call Norma at 890-6629 for more information.

The **Goodland Activities Center** has the daily activities. For information call 890-7242. Memberships options for everyone including day passes for \$5. Visit goodlandgac.com or stop by 808 Main. The hours are 5:30 a.m. to 8 p.m. on Monday through Thursday, Friday 5:30 a.m. to 6 p.m., Saturday 10 a.m. to 6 p.m. and Sunday 1 to 5 p.m. **Aerobics** are at 5:30 a.m. on Monday and Wednesday. **Insanity class** meets at 5:30 a.m. on Monday, Tuesday, Wednesday, Thursday, Friday and Saturday. **Taekwondo** with Wayne Luckert call for times and dates.

**Weight Watchers** meets at **5:30 p.m. for weigh in** and 6 p.m. for the meeting every **Tuesday** at the Harvest Evangelical Free Church, 521 E. Hwy. 24. For information call (785) 890-6423.

**Goodland Alcoholics Anonymous**, 1013 Center. If you drink alcohol, that's your business. If you want to stop, we can help. Call 821-

## the calendar

### calendar

A **Back to School Immunization Clinic** will be held from **8 a.m. to noon and 1 to 4:30 p.m. on Tuesday** at the Sherman County Health Department, 1622 Broadway. For information call 890-4888.

The **Goodland Farmers Market** is open **Saturdays from 8 a.m. to 11 a.m.** at Chambers Park. Selling are baked goods and fresh garden vegetables.

**Commodity Distribution** for Sherman County residents will be at **1:30 p.m. on Monday, Aug. 19**, at First Christian Church, 8th and Arcade. Foods will include carrots, orange juice, peaches, potato flakes, apricot halves, beef stew, vegetable soup, fruit and nut mix

3826 or 728-7491.

**Goodland Al-Anon Family Group** meets at **6 p.m. on Fridays** at First Christian Church, 711 Arcade. For information call Alice or Marilyn at 890-5914 or 821-2862.

The "Freedom Today" group of **Narcotics Anonymous** meets at **8 p.m. Tuesdays, 8 p.m. Fridays and 8 p.m. on Sundays** at 1013 Center. Call 890-8369.

**Bird City Alcoholics Anonymous** group meets at **6:30 p.m. (Mountain Time) on Fridays** at the Senior Center on 4th Street. **Narcotics Anonymous** meets at **6:30 (Mountain Time) on Tuesdays** at the Senior Center. Call (785) 734-2734 for more information.

**Stratton "AA by the Book" Alcoholics Anonymous** group meets at **7 p.m. Thursdays** for a beginners open meeting. Filies and young people welcome. Call (719) 348-5398 for men and (719) 346-8553 for women. On U.S. Highway 24 go to Statton and it is the second house on the left, 513 Iola Street.

**Fibromyalgia and Chronic Myofascial Pain Support Group** meets from **6:30 to 8:30 p.m. the third Wednesday** of every month in the Emergency Medical Services building, 257 15th St., in Burlington. Call Debbie at 719-346-4612.

### thrift store

The Goodland Churches Thrift Shop, 1002 Main, is open from 10 a.m. to 5 p.m. on Monday through Friday. Donations welcome. For information call 890-2007.

### health department

The Sherman County Health Department at 1622 Broadway is open from 8 a.m. to noon and 1 to 5 p.m.

and diced tomatoes. For information call Genesis (785) 890-2299.

**Prairie Land Food sign up** will be until **Monday**. Distribution is 1 to 2 p.m. Saturday, Aug. 24, at Cat's TrNt, 1018 Main, or at the Bernadine Johnson residence, located at 704 Walnut. For information call 899-2338, 821-1275, 890-2287, 821-1827 or 899-4278 or order online at www.prairie-landfood.com. The Prairie Pak will have sweet Italian sausage, lean fully cooked turkey cutlets, ground beef, breaded chicken chunks, meat balls, seasonal fresh fruits and vegetables. The specials are turkey pot roast; labor day griller with sirloins, pork chops, ground beef and chicken breast fillets; boneless pork chops; and sirloin steaks.

Monday through Friday.

Blood pressures; infants', children's and adults' immunizations; health assessments for Kan Be Healthy, daycare and school entry; fasting blood sugar and hemoglobin; and family planning available by appointment. Sharps containers are available for a fee. WIC program available. Call 890-4888 or go to www.sherman.kansas.com.

If you have questions, concerns or complaints about child care, call the health department.

**Water Testing** — The Northwest Local Environmental Protection Group does well evaluations, including testing for bacteria and nitrates. To schedule an evaluation or discuss environmental concerns, call the Health Department at 890-4888.

### hospital volunteers

Gift shop hours are 9 a.m. to noon and 1 to 4 p.m.; a.m. and p.m. volunteers are in the gift shop.

### early head start

Early Head Start is a state funded program for income eligible families with prenatal mothers and children up to age three. Families participate in a variety of educational activities and receive free medical and dental care.

Services include special needs of children with disabilities. If you have a family member with a special problem, such as drug or alcohol abuse, job loss or other family crisis, your family can qualify. Call 785-672-3125, ext. 187.

### preschool

Sherman County Head Start is a free preschool for eligible 3 and

**Community dances** will be held from **on Fridays, Aug. 9 and Aug. 23** at Knights of Columbus Hall, 8th and Caldwell, Goodland. Admission is \$5. Will be alcohol free, family fun environment. Water and soda will be available with some finger foods. For information call (890) 2688.

### senior menu

**Today:** Baked ham, candied sweet potatoes, corn, bread and watermelon. **Wednesday:** Chicken and rice casserole, peas, beets, bread and strawberries and bananas. **Thursday:** Pasta, beef and tomato casserole, three bean salad, pineapple, bread and pudding. **Friday:** Baked fish, macaroni and cheese, Italian blend vegetables, bread and gelatin with fruit.

## obituary

### Darlene Ruth Walter

Darlene Ruth Walter, 84, former Goodland schools bus driver, died after a short illness.

She was born Dec. 7, 1928, to Chester and Anna Cramer at the family farm near Kanorado. She attended school in Kanorado.

On March 16, 1947, she and Milton Walter were married at the Kanorado Methodist Church.

Mrs. Walter was a loving farm wife and caregiver. She was a member of Stateline EHU.

Preceding her in death were her husband in 2006, her parents and a sister Virginia Wilson.

Survivors include two daughters, Susan (Weldon) Phillips of Cartersville, Ga., and Diana (Allynn) Heble of Lawrence; four grandchildren; and seven great-grandchildren.

Services will be at 10 a.m. on Wednesday, Aug. 7, 2013, at Calvary Gospel Church, 402 College, Goodland with burial at the Kanorado Cemetery.

Visitation will be from 3 to 7 p.m. on Tuesday, Aug. 6, 2013, at Bateman Funeral Home, 211 E. 11th, Goodland.

Memorials to hospice may be sent to the funeral home.



Walter

## birth

### Kynsee Jade Loyd

Kynsee Jade Loyd was born at 7:47 p.m. on Monday, July 22, 2013, at the New Beginnings Birthing Center at Goodland Region Medical Center. She weighed 7 pounds, 2.8 ounces and was 20 1/4 inches long.

Her parents are Cody and Jamie Loyd of Goodland and her grandparents are Ray and Kathy Freeburg of Pine Bluffs, Wyo., and Pat and Cindy Loyd of Grover, Colo.

She was welcomed home by Brynlee Loyd.



Kynsee Jade Loyd

## Scammers picked the wrong people

Potential insurance scam artists in the Kansas City area picked the wrong people to call.

The Kansas Insurance Department heard recently from a pair of Kansas insurance agents who each received telephone solicitations for auto insurance. The agents became suspicious when the caller said he worked for the insurance company that the licensed agents work for. The caller also wanted information from the agents' driver's licenses, which was another red flag for the pair of insurance professionals.

"We received follow-up complaints from other Kansans who received the same type of calls," said Sandy Praeger, Commissioner of Insurance. "Fortunately, those who informed us of the potential scam were following the 'Stop. Call. Confirm' motto we always tell insurance consumers about. If you think something is fishy, Stop the conversation, Call our department,

### sandy praeger

• insurance comm.

and Confirm that the person on the phone is a registered Kansas insurance agent."

The insurance department's toll-free Consumer Assistance Hotline is (800) 432-2484.

The department's Anti-Fraud Division is investigating. The caller also told one licensed agent that he represented several named insurance companies; however, those companies employ their own agents and do not work through an independent agency.

"It's really important to protect your personal information, whether it's over the phone, in person or on the Internet," said Commissioner Praeger. "The more times our consumers are cautious, the fewer times the scammers succeed."

## matters of record

### Real Estate

The following real estate transactions have been reported by the Sherman County register of deeds.

Charles H. Paul and Carolyn J. Paul quit claim to Steven B. Paul; Lori Titus; Mark A. Paul; and Shelly K. VanCamp, a tract of land in NW/4 of Sec. 23, T10S, R41W.

Charles H. Paul and Carolyn J. Paul quit claim to Steven B. Paul; Lori A. Titus; Mark A. Paul; and Shelly K. VanCamp, the NE/4; N/2 of SW/4 and NE/4 of SE/4, all in

Sec. 14, T10S, R41W; AND S/2 of SW/4 of Sec. 14, T10S, R41W.

Janna K. Brachtenbach and Zane Brachtenbach convey and warrant to VLI, Inc. all tracts of land in SE/4 of Sec. 16, T8S, R40W.

US Marshall's Deed: United State of America was Plaintiff, and Jimmy E. Lovington and Arlene Aguirre were defendants. Property located in N20' of Lot 8, all of Lot 9, Block 48, Beahm's Addition to City of Goodland, was sold for judgement and costs.

## Beware of blue-green algae on ponds, lakes

With blue-green algae contaminating lakes nationwide, a Kansas State University toxicologist warns pet owners to understand the bacteria's dangers for their pets and for themselves.

Blue-green algae produce toxins that are hazardous to humans and can be fatal in animals, particularly dogs, said Deon van der Merwe, associate professor of diagnostic medicine and pathobiology. Blue-green algae, also known as cyanobacteria, grow in bodies of water, such as lakes and ponds, and other wet places, such as moist soil or rocks.

"Essentially anywhere there is water, you can find blue-green algae," said van der Merwe, who also manages the toxicology section of the Kansas State Veterinary Diagnostic Laboratory.

Blue-green algae develop when water has excess nutrients, which helps cyanobacteria grow rapidly and creates an algae bloom. Discolored water or algal scum can be signs of an algae bloom, which can last anywhere from a few days to several weeks. Cyanobacteria need sunlight to grow because they are

photosynthesizing organisms, van der Merwe said.

"If there is a lot of sunshine and if the weather is warm, that makes it easier for them to grow rapidly," van der Merwe said. "That's why blooms occur most frequently in the summer, especially in drought conditions. Under drought conditions, you typically have many cloudless days and more sunlight reaching water."

Health problems can arise when animals and people come into contact with the various toxins produced by cyanobacteria. The most prominent problem involves a toxin called microcystin, which affects the gastrointestinal tract and liver, van der Merwe said. When animals are exposed to this toxin, they may experience vomiting or diarrhea. If the cyanobacteria exposure is severe, it can be lethal and cause liver failure in animals.

Although gastrointestinal problems and liver failure also are possible in humans after blue-green algae exposure, irritant effects are more common. Humans often experience skin rashes, sneezing,

coughing, irritated eyes, running noses and conjunctivitis after blue-green algae exposure.

"If you go to a lake or pond and the water is green, it is important to avoid physical contact with that water," van der Merwe said. "If people swim or ski behind a boat and they inhale spray from behind that boat, those can also be situations in which people can be exposed."

Although blue-green algae affect all animals, they primarily affect dogs because of their behaviors, van der Merwe said. Dogs often roam around and seek out algal scums in the water or on the lakeshore. This is dangerous because even when the scum has dried, it still can maintain toxicity.

"If people suspect that their dog has been exposed and the dog starts to vomit, that is often the first sign you will see," van der Merwe said. "It is very important to get the dog to the veterinarian as soon as possible. It may be possible to do preventative treatment to stop the full development of the poisoning."

It's also important for pet owners to protect themselves from blue-green algae exposure, van der Mer-

**Enjoy a night at the movies!**  
  
**TONIGHT 7 PM**  
**THE HEAT (R)**  
 Starts Friday 7 PM: Grown Ups 2 (PG-13)

The Goodland Star-News  
 SUBSCRIBER  
**Fred H. Shields**  
 You receive two free passes to see:

**THE HEAT (R)**  
 Clip and bring to the show. Non Transferable  
  
 1203 Main Avenue • (785) 899-6103

**Classifieds work!**  
 899-2338

**HomeLand HoeDown**  
 Customer Appreciation Night  
  
**Friday - August 9th, 2013**  
 Meal will be served from 6:00 - 7:30 p.m.  
 Festivities will take place at 200 N. Franklin Ave.-Colby  
 Join us for hamburgers/hotdogs and all the fixens.  
 Live entertainment, door prizes and a good time!

**American Profile**  
 Celebrating Hometown Life  
 See American Profile magazine in this week's issue of  
**Your sponsorship could be right here!**  
 (available in local area only)  
 Brought to you by:  
**The Goodland Star-News**  
 Call The Goodland Star-News today for more information!  
 (785) 899-2338



One of Nancy Shores' piano students (above) that played at the gallery opening on Sunday at the Carnegie Arts Center. The photograph of Bill Coe is on display at the center until the end of August.

Photos by Kevin Bottrell  
The Goodland Star-News



# Nebraska artist has photographs on exhibit

Bill Coe's philosophy of "Anyone can be creative, but to be good, you must work at it everyday" is illustrated by his photography on exhibit at the Carnegie Art Center, 120 West 12th, Goodland. The exhibit will be on display until the

end of August. Entertainment for the opening on Sunday was provided by piano students of Nancy Shores. Coe was born in Hackensack, N.J., in 1944 and currently lives in Max, Neb. He was stationed in

Alaska while serving in the U.S. Army and has also lived in California. He attended a semester at the San Francisco Academy of Art in San Francisco. His work has been published in the *Bergen Evening Record* of

Hackensack, N.J.; *Benkelman Post* of Benkelman, Neb.; *Hitchcock County News* of Trenton, Neb.; *McCook Daily Gazette* of McCook, Neb.; NTV calendar in 2009, 2010, 2011, 2012 and 2013; *Easy Rider Magazine*; *In the Wind Magazine*;

*Farm and Ranch Magazine*; *Nebraska Cattlemen*; Associated Press; *Colby Free Press* and *Focus on Nebraska*. Coe's most recent shows have been at Wright Stone Gallery at McCook, Neb.; Prairie Museum of Art

and History in Colby; the American Kennel Club Dog Show art exhibit in Wichita and the Minden Opera House of Minden, Neb.

# Poster contest open to kids five to 13

Kids ages five to 13 in Kansas are encouraged to enter artwork for a statewide poster contest focusing on Put the Brakes on Fatalities Day - a nationwide effort to increase roadway safety and reduce all traffic fatalities.

Three statewide winners will receive family packages at the Great Wolf Lodge and also \$50 gas cards from QuikTrip Corporation.

A total of 18 regional winners in the six regions and age groups (ages 5-7, ages 8-10 and ages 11-13) will each receive a bicycle and a helmet donated by Safe Kids Kansas.

All entries must be postmarked by Friday, Sept. 20, and should be mailed to: AAA Kansas, Public Affairs, 3545 SW 6th Street, Topeka, Kan. 66606. On the back of the 8 1/2 by 11-inch paper entry must be the child's full name; age at time of entry; mailing address; county; a parent's name; and contact phone number. For more information on

the contest and the national safety campaign, go to Kansas Department of Transportation's Internet main website page at [www.ksdot.org](http://www.ksdot.org).

Below are the names of Kansas kids who have won the contest in the past three years:

**2012 Poster Contest Winners**  
Northeast Kansas - Cresinda Bandel, Oskaloosa; Addison Mae Gehrt Westmoreland; Jacque Stroud, Topeka.

North Central Kansas - Kady Toote, Washington; Leah Feldman, Gypsum; Eleanor Wiles, Gypsum.

Northwest Kansas - Hayden Gottstine, Logan; Haylee Tien, Logan. Southeast Kansas - Kasey Paige Smith, Cherryvale; Anna Ecoff, Parsons; Riley Brown, Humboldt.

South Central Kansas - Von Woleslagel, Hutchinson; Lauren Mason, Benton; Heather Woleslagel, Hutchinson.

Southwest Kansas - Serra Clarke, Jetmore; Carson Linenberger, Gar-

den City; Clara Jackson, Garden City.

**2011 Poster Contest Winners**  
Northeast Kansas - Sierra de Koning, Axtell; Reagan de Koning, Axtell; Necharika Kothapalli, Overland Park.

North Central Kansas - Elijah Schmidt, Junction City; Breckyn Martens, McPherson; Zoey Rankin, Ottawa.

Northwest Kansas - Aaron Moore, Oakley; Indigo Guise, WaKeeney; Donovan Schroeder, Herndon.

Southeast Kansas - Abigail Balson, Coffeyville; Macie Ables, Fredonia; Nathan Cunningham, Iola.

South Central Kansas - Heath David Moeckel, Plevna; Britton MacLaughlin, Arkansas City; Jack Kelly Lynch, Wichita.

Southwest Kansas - Emmi Lott, Rolla; Emily Allen, Garden City; John Dohogne, Garden City.

## 2010 Poster Contest Winners

Northeast Kansas - Corissa Bandel, Oskaloosa; Youna Song, Manhattan; Ashley Grimm, Morrill.

North Central Kansas - Makayla Sanderson, Courtland; Breckyn Martens, McPherson; Dylan Holerich, Tipton.

Northwest Kansas - Jailey Galentine, Gove; Reanna Harman, Hays; Morgan Kathleen Beougher, Stockton.

Southeast Kansas - Abigail Balson, Coffeyville; Riley Brown, Humboldt; Madi McDonald, Chanute.

South Central Kansas - Calli Hatfield, Wellington; Taya Wilson, Sterling; Morgan Friesen, Andover.

Southwest Kansas - Monserrat Acosta, Dodge City; Grace Lang, Fowler; Ana Maria Chairez-Almeida, Garden City.

# Logan museum to hold craft fair

Nestled in northwest Kansas, on Highway 9, the Hansen Museum sponsors one of the best craft fairs around on Saturday, Sept. 21. Hosting crafters from Kansas and surrounding states, this is a shopper's paradise. This annual event is held on the Hansen Plaza Square, Main Street, Logan. There is no admission charge to attend this event.

Chain saw artist, Blair Smith from Iowa, will be on the grounds to astound you with his chain saw artistry. His performances will begin at 8am and continue throughout the day with him completing several projects. Drawings at 10:45 a.m. and 1:15 p.m. (Mountain Time) will be held for two of his carvings.

Live entertainment on two stages will be performing at various times during the day. Left of Center from Concordia will be on the south stage at 9 a.m., 11 a.m. and 1:30 p.m. (Mountain Times). Angie LeDuc Band started in 2011, combining four talented musicians and singers into one outstanding country band, in 2012 the band changed their name to Left of Center; "We're all a little off, and have lots of fun!". Bagpipes will perform on the north stage at 10 a.m. and 12:15

p.m. (Mountain Time). This will be a chance to hear their special musical talents. Both stages promise to entertain with performances to please each and everyone attending the arts and crafts fair.

In addition to the live entertainment, there will also have several artisan presentations around the Plaza. We will have the Deer Creek Regulators fast draw shooting from 9 a.m. - 3 p.m.; Janie Lowry (quilting) will be doing a table runner demo in the community room at 10 a.m. and noon. Also, there will be "Fleece to Fabric" by area weavers and spinners and the Shepherd's Mill from 9 a.m. - 3 p.m., Brian Bethke - black smith from Atchison (originally from Stuttgart) from 9 a.m. - 3 p.m., and pottery by Josh Novak from Fort Hays from 9 a.m. - 3 p.m. Local artist, Staci Hartman will be demonstrating oil painting. All times are Mountain Time.

Museum hours are Monday through Friday 8 - 11 a.m. and noon - 3 p.m., Saturday 8 - 11 a.m. and 12 - 4 p.m., Sundays and holidays 1 - 5. All times are Mountain Time. We are handicapped accessible and there is never an admission fee.

# U.S. 36 event coming

Bargain hunters may want to mark their calendars for the 8th Annual U.S. 36 Highway Treasure Hunt, to be held Friday through Sunday, Sep. 20-22.

Towns along U.S. 36 from St. Francis to Elwood will participate in this 400-mile border-to-

border garage sale.

The sale, coordinated by the U.S. 36 Highway Association of Kansas, helps promote the economic well-being of the communities and businesses along the route.

## corrections

The Goodland Star-News will correct any mistake or misunderstanding in a news story. Please call our office at (785) 899-2338 to report errors.

We believe that news should be fair and factual.

We want to keep an accurate record and appreciate you calling to our attention any failure to live up to this standard.

## FOR RENT

Westside Apartments on Cattletrail has (2) 3 bedroom units for rent. These units come furnished with all of the kitchen appliances and a washer/dryer. Please contact NW Kansas Housing at (785) 421-2151 or [nwkpdc@ruraltel.net](mailto:nwkpdc@ruraltel.net) for more information.



## USD 352-paraprofessionals needed

USD 352 is taking applications for the following positions: **Paraprofessionals** (7-hours per day; Monday through Friday). Benefits include: single health insurance plan; paid sick and personal leave. Applications may be picked up at the Administration Office, 1312 Main, Goodland. USD 352 is an Equal Opportunity Employer.

## 30' x 40' x 10' Garage (with bells and whistles) \$22,400



- Microfoam Insulation in roof & sides
- Two 9' x 8' ins. garage doors
- One 3' 9-lite entry door
- Two 3' x 3' Insulated windows
- 4 Wainscoting
- Vented Ridge
- 12" Soffit & fascia
- 4 concrete floor

\* For a 24' x 32' x 10' Garage with the same details \$16,950  
Prices include: DELIVERY & INSTALLATION on your level site. Travel charges may apply



**Material Only Kits Now Available!**  
[www.qualitystructures.com](http://www.qualitystructures.com) • (800) 374-6988

Call for FREE information and estimates



## DRIVERS

\$\$ Stop Bumping Docks and Throwing Tarps \$\$  
**Try Dry Bulk!**  
No tank/hazmat required • Regional runs  
Owner operators & company drivers  
Great benefit package!  
Class A CDL, 1 yr. experience required  
Call Kevin: 877-325-4996 ext.211 • Apply online at [www.ctsco.com](http://www.ctsco.com)  
Central Transportation Services, Inc.

READ A  
**NEWSPAPER!**  
IT'S PORTABLE!  
The **Goodland Star-News**  
1205 Main, Goodland • (785) 899-2338

## Work In Comfort Year-Round



With Morton's Energy Performer Insulation Package Discover the distinct advantage of a Morton building. Call today for information and to get started on your building project.  
Eight offices serving Kansas  
**800-447-7436**  
[mortonbuildings.com](http://mortonbuildings.com)  
**800-447-7436 • [mortonbuildings.com](http://mortonbuildings.com)**

Let our Classifieds work for you!  
**899-2338**

from other viewpoints...

## Eisenhower speeches censored in military

If President Eisenhower were alive today, the five-star general may be shocked to know that his own speeches are too offensive to be quoted in the military he used to command.

A military chaplain has been taken to task for fulfilling the job description that most spiritual leaders (until recently) were hired to do: talk about faith. In a harmless post for his online website, "Chaplain's Corner," Lt. Col. Kenneth Reyes of the Joint Base Elmendorf-Richardson in Alaska wrote an inspirational piece called, "No Atheists in Foxholes: Chaplains Gave All in World War II."

The phrase, which President Eisenhower made famous in 1954, dates way back to the Japanese attack at Corregidor. Reyes had hoped to encourage his troops—believers and non-believers—with the brave story of the man who first coined the quote.

Turns out, the story only encouraged the attack of anti-faith zealots. Mikey Weinstein, whose own statements are fairly well-known ("Christian monsters of human degradation, marginalization, humiliation and tyranny"), organized a letter to Reyes's commanding officer, Col. Brian Duffy, demanding the chaplain be censored. Weinstein and Military Religious Freedom Foundation representative Blake Page blasted Reyes for his "redundant use of the bigoted, religious supremacist phrase, 'no atheists in foxholes,'" and accused the chaplain of "defil[ing] the dignity of service members." Of course, anyone who has actually read Reyes's column would understand how preposterous those charges are. Reyes never suggested that "there are no atheists in foxholes," he was merely tracing, in a very neutral way, the history of the well-known phrase—a far cry from the "anti-secular diatribe" the foundation calls it. Reyes goes out of his way to include unbelievers in his piece, even suggesting that "faith" can mean different things to different people.

Nonetheless, his superior, Col. Duffy, snapped to attention and within five hours of Mikey's complaint ordered the article scrubbed from the chaplain's website. In his profuse apology to the foundation, he promises to keep a vigilant watch over his troops' speech. "We remain mindful of the governing instructions on this matter and will work to avoid reoccurrence." Not surprisingly, that didn't satisfy Weinstein and foundation, who are demanding a formal punishment for Reyes. "Faith-based hate is hate all the same," Page wrote. "Lt. Col. Reyes must be appropriately reprimanded."

For what—doing his job? Engaging in constitutionally-protected speech? Like it or not, a chaplain's duties, by definition, are to offer prayer, spiritual guidance, and religious instruction. Whether Duffy punishes Reyes or not, the damage has already been done. As the Family Research Council's executive vice president, Lt. Gen. (Ret.) Jerry Boykin told Fox News's Todd Starnes, chaplains across the military are already afraid of carrying out the most basic duties of their job. "In this case, a chaplain has been censored for expressing his beliefs about the role of faith in the lives of service members.... Why do we have chaplains if they aren't allowed to fulfill that purpose?"

Thankfully the U.S. House of Representatives is on the verge of passing the Defense Department budget with language inserted to protect troops' conscience and religious rights. Additionally, over 160,000 Americans have signed a petition to Defense Secretary Hagel, urging him to issue clear policies to protect the religious freedom of our troops. Without such protections, the free speech rights and religious liberties of our nation's most diligent servants will continue to be trampled.

—Tony Perkins, Marine Corps veteran and president of the Family Research Council



## Press junket to Turkey

Where to start?

For 5,000 miles over first the Atlantic, then Europe, you don't know what's ahead. Only one of us has been to Turkey, or Turkiye, as the natives spell it. We know what we've read, seen on television, learned in school. This is for real.

We are on what's commonly known as a "junket," a trip for journalists organized and partly paid for by the something called the Niagara Foundation, which is interested in bringing people from other nations together with those of Turkey.

And while we know what we know, there's more to it than that.

Eastbound, the flight is about 10 1/2 hours with a tailwind. You fly not east, but a "Great Circle" route toward Greenland, Iceland, over Britain and Germany and down across Romania to the Black Sea. Mostly, it's night, but the pilot announces sunset and sunrise. Most of us wonder why.

We arrive in Istanbul the next morning, having lost seven hours since New York. We get the afternoon off to rest and refresh, then go out for dinner, the first of many feasts.

From the hotel, Istanbul spreads out to the west, north, east and—across the Sea of Marmara—to the south. The skyline is punctuated by the towers of modern office and apartment buildings and by the minarets of hundreds of mosques. The weather is 80s, clear and beautiful.



steve haynes

• along the sappa

We spend the next couple of days touring this ancient city, occupied by humans for as much as 8,000 years. Makes our sesquicentennials seem silly. A modern city of some 15 million, Istanbul has light rail, a subway, a busway, freeways—and traffic, lots of traffic.

The city was the capital of the eastern, or Eastern Roman, or Byzantine, empire until the conquest by Turkish muslims eight centuries ago. Today, they say the population is 99 percent Muslim, with a smattering of other "people of the book," Christians and Jews.

Istanbul's climate is moderated by the sea, but when we fly south, we find ourselves hiking around ancient Ephesus on a cloudless day with the temperature well into three digits (or in metric Turkiye, 35 to 37C). The coast of the Aegean Sea has mountains and pine trees, and lots of fire breaks bulldozed into the forest.

Farther east, we find country more like Colorado or New Mexico, with a touch of Kansas. Golden fields of wheat and barley stubble cover the valleys, and here and there, combines (red and green) clean up the last of the grain. Around Kayseri, there's little water

and the streams lead north into a huge, shallow salt lake.

Snow-capped peaks dominate the horizon, and the weather is cool, 70s to 80s by our standards. We go no farther than the center of the country, which could hold Kansas, Nebraska and Iowa with, it appears, room to spare. We drive to Cappadocia, where early Christians hid from Roman soldiers in quarters carved out of soft volcanic rock. We find that the government is trying to encourage people to stay here, rather than leaving for overcrowded Istanbul. It sounds familiar.

We ride a fast (150 mph) train to the capital, Ankara, and see the parliament building, tour the city, then it is back to Istanbul for a couple more days.

On Saturday night, we watched the now-weekly demonstration downtown on television. The Polis are shooting people with water canon mounted on strange-looking tanks. Demonstrators throw things. No one dies. Where we are, hardly anyone notices.

All too soon, and yet, soon enough, we are on the way home. Wherever we have gone, people have welcomed us and gone out of their way to help visitors, whether they knew who we were or just saw us standing on a street corner. Such a place; so much to tell.

This is just the beginning. Oh, and it's 11 1/2 hours home, against the wind.

## The virtue of 'sitzfleisch'

The bell rang for class to begin. My writing teacher announced that today our classtime would be spent on a writing assignment. After giving instructions, she released us to begin. Most of my high school classmates immediately took pencil to paper. But a few of us did not. Instead, we sat back in our seats and "thought." You know the look. You could wave your hand in front of our faces and we would not notice. We were deep in thought.

This could continue for ten, fifteen, even thirty minutes before we would "snap out of it" and begin to write furiously. We had found our stories. We had them organized in our minds. And now we wrote to beat the clock before class was over.

Those who had started at the beginning of class had plenty of time to hand in their papers. And those efforts usually produced uninspired stories of not much interest. But those of us who spent time thinking before we wrote had the stories she found worth reading aloud the next day. Many of us ran overtime, finishing and handing in our paper just as the next class was about all seated. I remember looking back as we left the classroom—our teacher was moving these last papers to the top. She would choose to read them first.

"Sitzfleisch" is the ability to sit quietly and think through a problem over a long time. It is a German term. It has no equivalent in English but we recognize the general concept. I value and promote it with my student teachers. But I only recently encountered "Sitzfleisch" in an essay by the Princeton scholar Freeman Dyson about the great Robert Oppenheimer who led our scientists to develop the atomic



education frontlines

• John Schrock

bomb during World War II.

Many great scientists have described how they solve problems. The solution never comes as a mechanical process of observation-hypothesis-test-results. Nearly all problems are solved after spending much thought-time on them, what we might call "mulling it over."

Linus Pauling described this in an interview. He had learned that xenon, an inert element that never forms chemical bonds in the human body, was a pain-killer. "I thought about it day after day for several days; in the evening when I would go to bed, I would lie there and think about the problem.... Then, seven years later, I was reading a scientific paper on crystal structure, and I said to myself, I understand anesthesia. I worked for about a year gathering data, and then I published my [classic] paper...."

Oddly, Dyson brings up "Sitzfleisch" because Oppenheimer did not have this ability: "He could never sit still long enough to do a difficult calculation. His calculations were often done hastily and were often full of mistakes." Oppenheimer's contributions were in organizing other scientists. He could

never extend his initial speculations on black holes and other physics by completing the difficult calculations. That task was eventually accomplished by others.

My concern today is that when I visit schools, I see teachers give students far fewer opportunities to sit-and-think. Thanks to often-inappropriate technologies, many students have lost the ability to be alone with their thoughts. More and more, teachers are taught to channel every student thought to get the desired consequences, often test results. Students are never allowed to be "alone with their minds." Under constant external bombardment with entertainment, many students appear unable to be alone with their internal thoughts.

One of the best places to be alone with your mind, quietly soaking up the environment around you, is on a field trip in the woods. One high school biology colleague of mine, in the center of the state, has led students on these popular experiences for years. But lately, her students insist on bringing their mobile phones and ear plugs—a practice that totally destroys the experience of being immersed in the wild. When she sets her foot down and prohibits the devices, she receives heavy pushback from both her school administrators and parents that are blinded by the new technology that they think can do no harm.

"Sitzfleisch!" They should stop and think deeply about that—if they still can.

## where to write

**U.S. Sen. Pat Roberts**, 109 Hart Senate Office Building, Washington D.C. 20510. (202) 224-4774; E-mail address — <http://roberts.senate.gov/public/index.cfm?p=EmailPat>

**U.S. Sen. Jerry Moran**, 354 Russell Senate Office Building, Washington, D.C. 20510. (202) 224-6521; Fax (202) 228-6966. E-mail address — <http://moran.senate.gov/public/index.cfm/e-mail-jerry>

**U.S. Rep. Tim Huelskamp**, 1st Congressional District, 126 Cannon House Office

Building, Washington D.C., 20575-1601. (202-225-2715) E-mail address — <https://huelskamp.house.gov/contact-me/email-me>

**State Rep. Ward Cassidy**, State Capitol Building Rm 151-S, 300 SW 10th, Topeka, Kan. 66612. Phone (785) 296-7616, home (785) 332-2850; e-mail address [ward.cassidy@house.ks.gov](mailto:ward.cassidy@house.ks.gov).

**State Sen. Ralph Ostmeyer**, State Capitol Building, Rm. 136-E, 300 SW 10th, Topeka, Kan. 66612. (785-296-7399; e-mail [ostmeyer@senate.state.ks.us](mailto:ostmeyer@senate.state.ks.us)).

## The Goodland Star-News

(USPS No. 222-460. ISSN 0893-0562)

Member: Kansas Press Association

Inland Press Association Colorado Press Association National Newspaper Association

e-mail: [star.news@nwkansas.com](mailto:star.news@nwkansas.com)

Steve Haynes, President  
Kevin Bottrell, Editor  
Pat Schiefen, Society Editor  
Advertising Department

Jessica Harenberg and Angela Bonham  
Sheila Smith, Circulation Manager

### Nor'west Press

Richard Westfahl, General Manager  
Gary Stewart, Jim Bowker, James Jackson  
Kris McCool, Tracy Traxel,  
Judy McKnight, Sheri Arroyo.



nwkansas.com

N.T. Betz, Director of Internet Services  
([nbetz49@nwkansas.com](mailto:nbetz49@nwkansas.com))

Evan Barnum, Systems Admin. ([support@nwkansas.com](mailto:support@nwkansas.com))

Published every Tuesday and Friday except the days observed for New Year's Day, Memorial Day, July 4th, Labor Day, Thanksgiving and Christmas Day, at 1205 Main Ave., Goodland, Kan. 67735.

Periodicals postage paid at Goodland, Kan. 67735; entered at the Goodland, Kan., Post Office under the Act of Congress of March 8, 1878.

POSTMASTER: Send address changes to The Goodland Star-News, 1205 Main Ave., Goodland, Kan. 67735.

TELEPHONE: (785) 899-2338. Editorial e-mail: [star-news@nwkansas.com](mailto:star-news@nwkansas.com).

The Goodland Star-News assumes no liability for mistakes or omissions in advertising or failure to publish beyond the actual cost of the ad.

SUBSCRIPTIONS: In Sherman County and adjacent counties: three months, \$29; six months, \$46; 12 months, \$81. Out of area, weekly mailing of two issues: three months, \$39; six months, \$54; 12 months, \$89 (All tax included). Mailed individually each day; (call for a price).

Incorporating:

**The Goodland Daily News**  
1932-2003

**The Sherman County Herald**  
Founded by Thomas McCants  
1935-1989

**THE SHERMAN COUNTY STAR**  
Founded by Eric and Roxie Yonkey  
1994-2001

**Nor'West Newspapers**  
Haynes Publishing Company

### Letter Policy

The Goodland Star-News encourages and welcomes letters from readers. Letters should be typewritten, and must include a telephone number and a signature. Unsigned letters will not be published. Form letters and letters deemed to be of no public interest or considered offensive will be rejected. We reserve the right to edit letters for length and good taste. We encourage letters, with address and phone numbers, by e-mail to: [star.news@nwkansas.com](mailto:star.news@nwkansas.com).

# Leadership Kansas visits Goodland

LEADERSHIP, from Page 1

charge of planning the visit, said it was about more than just promoting the area.

"It's not just about cheerleading western Kansas," she said. "It's about how western Kansas fits in with the state as a whole."

Sanderson said the students are chosen from proven, established leaders.

The students arrived in town on July 24. They were welcomed the next morning by Mayor Annette Fairbanks and met with Tracy Streeter from the Kansas Water Office and Wayne Bossert, the outgoing Groundwater Management District 4 manager to talk about water issues.

Then they discuss the economics of agriculture and visited Jeff Deeds' farm. Some of the students were several generations removed from agriculture, but were poised to take over family farms, Sanderson said. The class was able to take a look at a wide variety of modern farm equipment, the size and cost of which amazed many of the students, she said.

The students went to Northwest Kansas Technical College for lunch and a talk by Information Technology Director Brad Bergsma about advances and creativity. The class also talked about issues facing two-year colleges with a panel that included Blake Flanders, vice president for workforce development with the Kansas Board of Regents; Linda Fund, executive director of the Kansas Association of Community Colleges; Steve Kearney of Kearney Law Office; Nick Ortnier, general manager of American Implementation. Dick Short served as moderator.

Next on the agenda was rural healthcare with Kansas Secretary of Health and Environment Dr. Robert Moser.

"It's amazing when you get the secretary of anything to come out here," Sanderson said.

Moser stayed on to attend the dedication of the new dialysis unit at the hospital. The students also visited with Richard Miller, chief executive officer at the Norton County Hospital, and Kevin Sanderson, director of information systems at Goodland Regional Medical Center, about healthcare chal-

lenges from the perspective of hospital administration.

After being led through some exercises by Dr. Patrick Gleason, the students heard the providers' perspective on rural healthcare from Dr. Jeffrey Cross and Dr. Vijay Subbarao, two of the specialists who travel to Goodland from Denver. Sanderson said the doctors spoke about why it is important to make the trip from the big city to Goodland to provide healthcare.

On July 26, the students drove to Colby for a talk on economic development with the Sherman and Thomas County economic development directors, Michael Solomon and Christy Rocca in the loft at the Cooper Barn. Sanderson said they also visited the Lone Star Church and had a presentation about rural main street revitalization efforts.

Sanderson thanked the local people and organizations that helped during the visit, including Alan Townsend, Jeff Deeds, Dr. Ed Mills and Diane Styles.

# State encourages businesses to hire military veterans

The Kansas Department of Commerce encourages employers to show their support for hiring veterans by signing the "Hire a Veteran" pledge on the new KanVet website at [www.KanVet.ks.gov](http://www.KanVet.ks.gov). Employers who sign the pledge agree to consider qualified military veterans for open positions.

"Kansas is proud of those who have sacrificed to defend our country and freedoms, and we are thankful for their service," Kansas Commerce Secretary Pat George said. "The 'Hire a Veteran' pledge provides employers with a way to show their appreciation and support of our veterans, and it also helps veterans by matching them with job opportunities."

Gov. Sam Brownback and other state officials helped launch the KanVet website on July 1. KanVet connects veterans with higher education information and job searching tools designed specifically for veterans. Employment resources include information about KansasWorks, the KanServe program, opportunities with the Kansas Army and Air National Guard and descriptions of other employment services.

Education tools provide the ability to search for higher education programs for veterans at all Kansas Board of Regents universities, as well as community and technical colleges.

Employers can view the "Hire a Veteran" pledge at [www.KanVet.ks.gov](http://www.KanVet.ks.gov). Employers who take the pledge will publicly demonstrate support for hiring veterans. In addition, KansasWorks staff will contact businesses and organizations that take the pledge to help link them with qualified veterans seeking jobs.

Employers that sign the pledge will receive a signed certificate acknowledging their support. In addition, businesses will receive KanVet posters and stickers that they can use to demonstrate their support of veterans in Kansas.

In addition to Commerce, other state agencies that helped develop KanVet include the Kansas Adjutant General's Office, the Kansas Commission on Veterans Affairs, the Department for Children and Families and the Kansas Board of Regents.

To take the employer pledge or learn more about the initiative, visit [www.KanVet.ks.gov](http://www.KanVet.ks.gov).

# The Goodland Star News Service Directory

## July Service Special

### Air Conditioning Service

A/C Evacuation & Recharge Service\*

# \$49<sup>95</sup>\*

Inspect system for leaks, check drive belt condition and tension. Check hoses. Not valid with other offers. Parts and materials not included. Expires 7/31/2013.

No sales tax on labor in Colorado.

**SCHEDULE ONLINE AT:**  
[www.vincesgmcenter.com](http://www.vincesgmcenter.com)

1847 Rose Ave., Burlington, CO 80807  
(800) 231-8991 • (719) 346-5326

Be sure to visit us on Facebook!

## WEEKEND SPECIAL

### FRIDAY, SATURDAY AND SUNDAYS!

Half rack ribs, mashed potatoes, corn on the cob and a drink ONLY \$10!

Hours:  
Monday-Saturday 10:30 AM-8:30 PM  
Sundays 10:30 AM-2 PM



**FRIED CHICKEN • BBQ BRISKET • HOT WINGS**

1016 Main Street, Goodland, KS 67735 • Phone (785) 890-3710

The Service Directory does the hard work for you!

Call Angela today to find out how!  
(785) 899-2338



**www.rcdsnow.com**

**FALL ENROLLMENT STARTS SOON!**  
**AUGUST 12-15, 4-7 PM AT STUDIO**




**better water. pure and simple.®**

- Drinking Systems • Water Softeners (Sales & Rentals)
- Water Coolers • Salt Sales & Delivery


## Scheopner's Water Conditioning, Inc.

Goodland & Colby, KS • Toll free: (800) 536-2352

Welcome



**Dr. Justin Evanson**  
DDS, MD




Oral and Maxillofacial Surgeon

*Dr. Justin Evanson has joined the Burlington Family Dentistry team, providing ORAL SURGERY with IV SEDATION, including wisdom teeth extractions. •• Accepting most insurances. ••*

Now you can have oral surgery right here in Burlington and avoid the trip to the city.

**Burlington Family Dentistry**  
340 14th St. • Burlington  
(719) 346-8266  
Please call for an appointment  
Jason Ehtessabian, DDS, PC



[www.burlingtonfamilydentistry.net](http://www.burlingtonfamilydentistry.net)

**Don't swelter through another hot summer!**




Sleep in cool, cool comfort with a dependable Trane air conditioning system. Don't hesitate... call today for information!

**Bowman Heating & Air Conditioning**  
(785) 899-5770  
577 W. 31st, Goodland

"Seek Shelter Today!"

LIFE • HOME • CAR • FARM • BUSINESS



**Jim Alcorn, Agent**  
1624 S. Main Street  
Goodland, KS 67735-0727  
Business: (785) 899-2553



[www.shelterinsurance.com](http://www.shelterinsurance.com)

**Wanted: DIRTY CARPET**

**IF YOU HAVE DIRTY CARPET, WE CAN STEAM CLEAN IT.**  
**NO JOB TOO BIG OR TOO SMALL!**

- Commercial/Residential
- Advanced Truck Mounted Steam Cleaning Equipment
- Water Damage Restoration
- FREE ESTIMATES

**PRO FLOOR CARE**  
Carpet & Upholstery Cleaning  
(785) 462-8313 or (800) 473-4138




**KANSASLAND TIRE**

**Willie Weems**  
Store Manager  
24-hour Service

1402 Main Goodland, KS 67735  
www.thetirestore.com  
785.899.3689  
Fax: 785.899.2131  
Toll Free: 800.281.3689

Tire and Auto Service Professionals

**Windy Plains Bike Shop**

Professional bicycle repairs since 1978!  
Parts, accessories and service for all makes.  
Pick up and delivery available in Goodland!

**TIRED OF FLATS?**  
ASK ABOUT OUR NO FLAT GUARANTEE!

**Harold Snethen**  
6085 Rd. 17  
(785) 899-4786 • (785) 899-5858 (home)  
Same day service on most out of town repairs!



## Truck Lettering

# 800-886-2423

AWARD WINNING SIGNS AND PINSTRIPING SINCE 1974

## Hot Brush

204 W. 4th Box 309  
Bird City, Kan. 67731

## The Decorating Co.

Interior Design Consultants  
**Irene Smith & Rochelle Kling**

There's no limit to our imagination.

106 E. 11th, Goodland, KS 67735  
(785) 890-5441  
E-mail: [decorco@st-tel.net](mailto:decorco@st-tel.net)



## NEW SYSTEM PROFESSIONAL WINDOW CLEANING



Serving Northwest Kansas & Northeastern Colorado since 1992!

(785) 462-6995 OR (800) 611-6735  
[egriffith@st-tel.net](mailto:egriffith@st-tel.net)

[www.mywindowcleaner.net](http://www.mywindowcleaner.net)



Eldean and Janet Griffith • PO Box 692, Colby, KS



## Superior

Flooring and Furniture and Accessories

360 14th St., Burlington, CO ~ PHONE: (719) 346-7579  
Dan and Myrna Troyer



"Where Service is an Affair of the Heart"

## DAN BRENNER FORD, INC.

222 W. HWY. 24, I-70 BUSINESS LOOP, GOODLAND, KS  
(Toll Free) 800-636-8770  
(Business) 785-899-2316 (Fax) 785-899-2317

## Langer Industrial Service

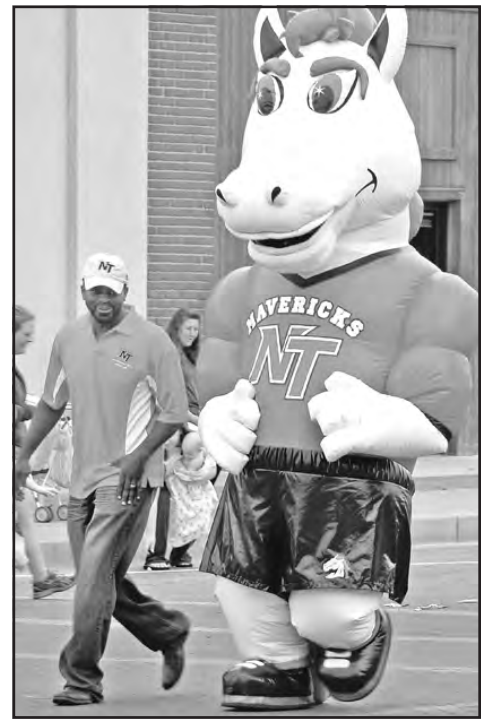
2022 County Road 11 • Levant, KS 67743 • 785-586-2208  
Monday - Friday 8 a.m. - 5 p.m.

**We pay cash up to for all scrap metal\***

- Brass • Copper • Aluminum • Batteries • Electric motors • Cars
- Combines • Farm Equipment • Prepared/Unprepared Iron and Tin
- Container Service • Off site baling and car crushing
- Limited pickup service available

Schedule deliveries after normal business hours by appointment when necessary  
\* Some Conditions Apply

Eldean and Janet Griffith • PO Box 692, Colby, KS



# Classic cars and 4-H clubs awarded at 2013 free fair parade



Carnival Lights and Country Nights was the theme for this year's Northwest Kansas District Free Fair Parade. With construction cleared up, the parade was back on Main Street this year. Entries included everything from 4-H clubs to the Northwest Kansas Technical College mascot (below right). Awards were given in several categories. The Ruleton Eager Beavers (above left) won first place in the 4-H category. In second place was the Sunflower 4-H Club and in third were the Country Clovers (above left). First place in the Community Floats category went to Sherman County Speedway (bottom). Second place went to The Basement and third place to S&M Repair. First place in the Antique Vehicle category went to a 1969 GTO Convertible. Kevin Neitzel placed first in the Individual category; a 1934 Chevy, second; and Jaime and Sarah Nemechek, third. The overall first place winner was the Ruleton Eager Beavers with Jaime and Sarah Nemechek in second place and the Sunflower 4-H Club in third.

Photos by Kevin Bottrell  
The Goodland Star-News



# Delinquent Taxes

Published in the Goodland Star News, Goodland, Kansas, Friday, August 06, 13 & 20, 2013. Notice is hereby given that the taxes assessed for the year 2012 on the lands, lots and blocks described in the following list, accompanied by the names of the owner and situated in Sherman County, State of Kansas, are whole or in part unpaid and that said land, lots or blocks will be, on the First Tuesday of September, 2013 bid off by me in the name of Sherman County, NO BIDDERS BEING allowed and sold to Sherman County for the amount of delinquent taxes and interest and legal charges due thereon and unpaid to said date, according to the provision of Chapter 79, Articles 23 of the Kansas Statutes Annotated unless otherwise prohibited by applicable Federal or State law.

April J. Hall,  
Sherman County Treasurer

706.50 Aaron, Rose Dorine Subd-2nd Addn to Goodland Blk-36 Lot-15 Prop Addn: 402 W 7th St 67735

75.41 Adams, David T & Susan D Subd-Kanorado Original Town Blk-4 Lot-14 Prop Addn: Main St 67741

103.15 Adams, David T & Susan D Subd-Kanorado Original Town Blk-4 Prop Addn: Walnut St 67741

171.56 Aguirre, Joe Jr Subd-Rule's 1st Add to Kanorado Blk-17 Lot-5 Prop Addn: 308 Locust St 67741

47.89 Aguirre, Jose Jr & Pena, Olevia Subd-Rule's 1st Add to Kanorado Blk-15 Lot-9 Prop Addn: 102 Front St 67741

358.52 Albers, Andrew Ray Albers, Glenda Leann Subd-First Addn to Goodland Blk-38 Lot-5 Prop Addn: 612 W 15th St 67735

681.90 Almanza, Luis A & Tania Elvira Chavez Subd-Beahm's Addn to Goodland Blk-26 Prop Addn: 420 Harrison Ave 67735

.96 Appraisal Assoc of Okla Sec-24 Twp-10 Rng-41

2.40 Appraisal Assoc of Okla Sec-08 Twp-10 Rng-40

20.95 Appraisal Assoc of Okla Sec-22 Twp-10 Rng-40

5.30 Appraisal Assoc of Okla Sec-19 Twp-10 Rng-40

16.67 Appraisal Assoc of Okla Sec-27 Twp-10 Rng-40

247.46 Arasmith, Patrick L & Margaret L Subd-Sharp's Addn to Goodland Blk-6 Prop Addn: 1515 Cattlerail Ave 67735

898.86 Armstrong, Robert K Subd-Goodland City Tracts Sec-29 Twp-08 Rng-39 Prop Addn: 2157 Caldwell 67735

36.01 Bagley, Rex & Sandra Subd-Kanorado Original Town Blk-11 Prop Addn: Main St 67741

624.33 Baker, DELVIN & Darlene, Sec-01 Twp-09 Rng-40 Prop Addn: 6130 Hwy 27 67735

3,554.33 Balderas, Jesus & Rosalba Subd-Goodland City Tracts Sec-19 Twp-08 Rng-39 Prop Addn: 910 W Hwy 24 67735

173.30 Barnhart, Shirley A Subd-Sharp's Addn to Goodland Blk-1 Lot-9 Prop Addn: 520 W 16th St 67735

172.18 Baumfalk, Virgil Sec-06 Twp-08 Rng-40 Prop Addn: 1396 Road 67 67735

581.17 Beedy, Geraldine V (TOD) Subd-Kohler First Add to Goodland Blk-5 Prop Addn: 215 Cherry Ave 67735

216.22 Bennett, Debra & Hall, Tika Subd-Beahm's Addn to Goodland Blk-26 Prop Addn: 404 Harrison Ave 67735

.36 Benton, Laura Edith Sec-24 Twp-10 Rng-41

8.18 Benton, Laura Edith Sec-15 Twp-10 Rng-40

7.10 Benton, Laura Edith Sec-27 Twp-10 Rng-40

1,929.68 Bentzinger, Justin D Subd-Goodland Original Town Blk-66 Prop Addn: 1102 Main Ave 67735

479.86 Bentzinger, Justin D Subd-First Division of First Addn Blk-10 Lot-1 Prop Addn: 1502 Syracuse Ave 67735

475.62 Bentzinger, Justin D Subd-Sharp's Addn to Goodland Blk-12 Lot-24 Prop Addn: 515 W 16th St 67735

572.67 Bentzinger, Justin D Sec-13 Twp-08 Rng-40 Prop Addn: Co Rd

1,226.20 Bentzinger, Justin D Sec-23 Twp-08 Rng-40 Prop Addn: Co Rd

1,149.22 Black, Shawn Sec-31 Twp-07 Rng-38 Prop Addn: 2540 Road 68 67735

607.35 Blevins, Ira D & Mary E Subd-Goodland Original Town Blk-73 Lot-15 Prop Addn: 1219 Center Ave 67735

1,015.78 Bohl, Larry D & Marilyn I Subd-2nd Addn to Goodland Blk-4 Prop Addn: 124 Main Ave 67735

415.17 Bohl, Marilyn Subd-C K & N Addn to Goodland Blk-10 Prop Addn: 1528 Sherman Ave 67735

329.26 Bohl, Marilyn I Subd-Goodland Original Town Blk-71 Lot-7 Prop Addn: 313 W 12th St 67735

659.27 Bohl, Marilyn I Subd-2nd Addn to Goodland Blk-12 Lot-17 Prop Addn: 215 Main Ave 67735

88.40 Bohl, Marilyn I & Larry D Subd-Sharp's Addn to Goodland Blk-9 Lot-3 Prop Addn: 1606 Texas Ave 67735

47.89 Bohl, Marilyn I & Larry D Subd-Sharp's Addn to Goodland Blk-9 Lot-5 Prop Addn: Texas Ave 67735

568.64 Bohl, Marilyn I Etal Subd-Goodland Original Town Blk-80 Prop Addn: 122 W 14th St 67735

85.69 Borgman, Joy TOD to James M Borgman Jack L Borgman Sec-28 Twp-07 Rng-39

85.69 Borgman, Belle, Borgman, Jack L, Borgman, James M TOD Sec-27 Twp-07 Rng-39

394.12 Bostwick, Samara Subd-Beahm's Addn to Goodland Blk-38 Prop Addn: 602 College Ave 67735

15.33 Bostwick, Samara Subd-2nd Addn to Goodland Blk-19 Lot-17 Prop Addn: Sherman Ave 67735

385.26 Bostwick, Samara Subd-2nd Addn to Goodland Blk-24 Lot-6 Prop Addn: 412 Center Ave 67735

15.33 Bostwick, Samara Subd-2nd Addn to Goodland Blk-47 Lot-13 Prop Addn: Sherman Ave 67735

22.71 Bostwick, Samara Subd-Sharp's Addn to Goodland Blk-1 Lot-13 Prop

Address: 1525 Montana Ave 67735

164.39 Bostwick, Samara Subd-Sharp's Addn to Goodland Blk-1 Lot-14 Prop Addn: 1521 Montana Ave 67735

339.86 Bostwick, Samara Subd-Sharp's Addn to Goodland Blk-1 Lot-16 Prop Addn: 1519 Montana Ave 67735

47.62 Bostwick, Samara Subd-Sharp's Addn to Goodland Blk-1 Lot-18 Prop Addn: 1515 Montana Ave 67735

187.65 Buell, Leona L & Weehunt, Loren Dale Subd-Sharp's Addn to Goodland Blk-3 Lot-6 Prop Addn: 1534 Syracuse Ave 67735

1,073.12 Burk, Jerrod Sec-31 Twp-08 Rng-39 Prop Addn: 3342 Sunset Dr 67735

1.56 Buzzi, Gretchen Revocable Trust Sec-18 Twp-09 Rng-37

328.40 Caldwell's Inc Subd-Kohler First Add to Goodland Blk-6 Lot-12 Prop Addn: 205 Caldwell Ave 67735

276.88 Calkins, Leonard L & Betty M Subd-First Addn to Goodland Blk-28 Lot-4 Prop Addn: 809 W 12th St 67735

80.07 Calkins, Loran Etal Subd-First Addn to Goodland Blk-28 Lot-7 Prop Addn: W 12th St 67735

44.45 Carson, Connie Subd-Sharp's Addn to Goodland Blk-8 Prop Addn: 910 W 17th St 67735

10.34 Chapman, Christopher E Sec-31 Twp-06 Rng-42

144.14 Clark, Angel A Subd-C K & N Addn to Goodland Blk-11 Lot-6 Prop Addn: 1516 Grand Ave 67735

113.13 Clift, Jimmy Subd-Sharp's Addn to Goodland Blk-1 Lot-11 Prop Addn: 526 W 16th St 67735

337.86 Cockey, William A & Linda M Subd-2nd Addn to Goodland Blk-35 Lot-16 Prop Addn: 408 W 6th St 67735

47.87 Cody, Amy M Estate Subd-Kanorado Original Town Blk-5 Lot-11 Prop Addn: 504 Center St 67741

1,926.51 Cody, Rodney Dean Jr Family TR Subd-Goodland City Tracts Sec-19 Twp-08 Rng-39 Prop Addn: 118 E Hwy 24 67735

465.29 Cody, Rodney Dean Jr Family TR Subd-Goodland Sub of Blks to Orig Blk-50 Prop Addn: 222 E 10th St 67735

267.77 Conrad, Lawrence A Sec-04 Twp-08 Rng-41 Prop Addn: 6780 Road 10 67735

264.25 Cotten, Robert L & Sandra L Subd-First Addn to Goodland Blk-25 Lot-33 Prop Addn: 520 W 13th St 67735

179.34 Cramer, Cramer, Walter & Wilson Partners Sec-27 Twp-08 Rng-42

270.35 Daise, Paul K Family Rev TR Sec-25 Twp-07 Rng-42 Prop Addn: 6995 Road 6 67741

135.82 Daise, Randall L Sec-19 Twp-06 Rng-41 Prop Addn: Co Rd

594.01 Daniels, Kenneth D Subd-Goodland Original Town Blk-63 Prop Addn: 1116 Broadway Ave 67735

87.34 Dankin, Lawrence Etal Subd-C K & N Addn to Goodland Blk-10 Lot-4 Prop Addn: 1516 Sherman Ave 67735

77.35 Davis, Tarry A Sec-30 Twp-08 Rng-39 Prop Addn: Co Rd

3.61 Egan, Thomas J Sec-29 Twp-08 Rng-40 Prop Addn: Co Rd

2.77 Elliott Burks, Marie Sec-15 Twp-10 Rng-40

.12 Elliott, Cecily Sec-24 Twp-10 Rng-41

2.40 Elliott, Cecily Sec-27 Twp-10 Rng-40

2.77 Elliott, Cecily Sec-15 Twp-10 Rng-40

5.30 Elliott, J C & Benton, Laura Edith Sec-31 Twp-10 Rng-40

57.36 Emig, Norma L Sec-05 Twp-10 Rng-40

38.09 First National Bank Sec-27 Twp-08 Rng-42

141,458.74 First National Bank of Goodland Subd-Goodland Energy Center Lot-6 Prop Addn: 101 Sunflower Dr 67735

246.46 Fisher, Gary Leon & Brenda Sue Subd-First Addn to Goodland Blk-8 Lot-4 Prop Addn: 903 W 9th St 67735

212.88 Flores, Irma Subd-C K & N Addn to Goodland Blk-5 Lot-11 Prop Addn: 1526 Caldwell Ave 67735

988.49 Flying Anchor Rev Liv TR Subd-3rd Addn to Goodland Blk-26 Lot-7 Prop Addn: 620 E 15th St 67735

121.95 Flying Anchor Rev TR Sec-09 Twp-09 Rng-39 Prop Addn: Co Rd

125.12 Flying Anchor Rev Liv TR Sec-09 Twp-09 Rng-39 Prop Addn: Co Rd

361.62 Flying Anchor Rev TR Sec-10 Twp-09 Rng-39 Prop Addn: Co Rd

431.06 Flying Anchor Rev Liv TR Sec-10 Twp-09 Rng-39 Prop Addn: Co Rd

317.53 Flying Anchor Rev TR Sec-10 Twp-09 Rng-39 Prop Addn: 2215 Road 61 67735

114.72 Flying Anchor Rev TR Young, Leonard & Wilma Sec-10 Twp-09 Rng-39 Prop Addn: Co Rd

234.90 Flying Anchor Rev Liv TR Sec-10 Twp-09 Rng-39 Prop Addn: Co Rd

85.95 Foster, Travis J Subd-Goodland Original Town Blk-57 Prop Addn: W 11th St 67735

198.95 Galli, Jason C Subd-2nd Addn TO Goodland Blk-33 Prop Addn: 222 W 6th St 67735

316.76 Gamboa, Eraclio & Nicole Subd-Rule's 1st Add to Kanorado Blk-17 Lot-1 Prop Addn: 310 Locust St 67741

220.30 Garza, Vicenta Ray Subd-2nd Addn to Goodland Blk-14 Lot-5 Prop Addn: 208 Caldwell Ave 67735

1,076.09 GEC II LLC Subd-Goodland Energy Center Lot-22 Prop Addn: Railroad Dr 67735

1,074.38 GEC II LLC Subd-Goodland Energy Center Lot-21 Prop Addn: Railroad Dr 67735

1,330.39 GEC II LLC Subd-Goodland Energy Center Lot-20 Prop Addn: Railroad Dr 67735

994.90 GEC II LLC Subd-Goodland Energy Center Lot-19 Prop Addn: Railroad Dr 67735

1,091.46 GEC II LLC Subd-Goodland Energy Center Lot-15 Prop Addn: Energy Park DR

10,136.75 GEC III LLC Subd-Goodland Energy Center Lot-18 Prop Addn: 101 Energy Park Dr 67735

647.65 George, Harold A LLC Sec-10 Twp-07 Rng-42 Prop Addn: 7245 Road

4 67741

421.39 Gomez, Maria R Subd-Kohler First Add to Goodland Blk-2 Prop Addn: 104 College Ave 67735

3,451.07 Goodland Grain LLC Subd-Goodland Industrial Park Blk-3 Lot-3 & 6 Prop Addn: Co Rd

465.13 Gould, Mark Allen & Meliani Leann Subd-3rd Addn to Goodland Blk-11 Lot-23 Prop Addn: 1003 Cherry Ave 67735

252.35 Gutierrez, Roberto A & Josefa G Subd-Replate Blk 1 Cody's Addn Blk-1 Lot-18 Prop Addn: 104 Center St 67741

379.24 H & W Enterprises, LLC Sec-23 Twp-10 Rng-37

1,861.90 H O N I Inc & H W P of Vero Beach Inc Subd-Goodland City Tracts Sec-19 Twp-08 Rng-39 Prop Addn: 516 W Hwy 24 67735

3.98 Hannan, Helen Sec-11 Twp-07 Rng-37

620.89 Harrington, Patricia M Subd-2nd Addn to Goodland Blk-44 Lot-10 Prop Addn: 722 Clark Ave 67735

404.30 Haynes, Tommy L & Retina A Subd-2nd Addn to Goodland Blk-3 Lot-13 Prop Addn: 117 Main Ave 67735

772.60 Heid, John & Madden, Shelly K Subd-Goodland Original Town Blk-66 Prop Addn: 121 W 11th St 67735

497.78 Heid, John & Madden, Shelly Subd-First Addn to Goodland Blk-35 Lot-18 Prop Addn: 620 W 14th St 67735

465.13 Heid, John & Madden, S K Subd-Goodland Sub of Blks to Orig Blk-75 Lot-11 Prop Addn: 1209 Broadway Ave 67735

360.53 Heier, Timothy R Subd-Eastridge Addn #1 Blk-4 Lot-2 Prop Addn: 804 Eustis Ave 67735

14.77 Helena Chemical Co Sec-19 Twp-08 Rng-38 Prop Addn: 6409 Road 25 67735

1,089.74 Hellerud, Thomas Lee Subd-3rd Addn to Goodland Blk-22 Lot-19 Prop Addn: 1309 Cherry Ave 67735

559.25 Hellerud, Timothy E Subd-C K & N Addn to Goodland Blk-18 Lot-8 Prop Addn: 1618 Caldwell Ave 67735

684.27 Hellman, Lauren & Rosalie Subd-Rule's 1st Add to Kanorado Blk-16 Lot-23 Prop Addn: 305 Locust St 67741

899.03 Hernandez, Benny J Subd-3RD Addn to Goodland Blk-2 Prop Addn: 602 E 9th St 67735

255.71 Hernandez, Reina Subd-Kohler First Add to Goodland Blk-6 Lot-13 Prop Addn: 211 Caldwell Ave 67735

176.21 Hernandez, Rhonda Renee Subd-2nd Addn TO Goodland Blk-23 Lot-16 Prop Addn: 419 Grand Ave 67735

4,714.85 Hicks, Truman & Catherine-Subd-Sharp's Addn to Goodland Blk-9 Lot-14 Prop Addn: 1613 Colorado Ave 67735

363.11 Hillman, Craig L Subd-C K & N Addn to Goodland Blk-7 Lot-5 Prop Addn: 1516 Broadway Ave 67735

123.67 Hostetler, Brent Subd-First Addn to Goodland Blk-35 Lot-8 Prop Addn: 615 W 13th St 67735

133.64 Hostetler, Brent Subd-Beahm's Addn to Goodland Blk-48 Prop Addn: 721 Cherry Ave 67735

114.48 Hostetler, Brent Subd-2nd Addn to Goodland Blk-20 Lot-1 Prop Addn: 304 Sherman Ave 67735

242.26 Hostetler, Brent Subd-2nd Addn to Goodland Blk-37 Lot-13 Prop Addn: 322 W 7th St 67735

953.46 Howard, Clarence L Subd-First Division of First Addn Blk-8 Lot-3 Prop Addn: 1506 Kansas Ave 67735

802.92 Howard, Clarence L Jr Etal Subd-Sharp's Addn to Goodland Blk-9 Lot-1 Prop Addn: 1602 Texas Ave 67735

82.19 James, Curt Subd-Kanorado Original Town Blk-3 Lot-8 Prop Addn: 208 Locust St 67741

2,979.79 Jennings, Jeremiah Thomas Koehler, Colleen Subd-Goodland Original Town Blk-59 Lot-11 Prop Addn: 1024 Main Ave 67735

532.35 Johnson, Leon L & Carol J Subd-2nd Addn to Goodland Blk-17 Prop Addn: 318 Broadway Ave 67735

.36 Jones, Annette Rae Sec-24 Twp-10 Rng-41

8.18 Jones, Annette Rae Sec-15 Twp-10 Rng-40

7.10 Jones, Annette Rae Sec-27 Twp-10 Rng-40

214.61 Kear, Lonny Lee & Jodie A Subd-Sharp's Addn to Goodland Blk-8 Lot-9 Prop Addn: 525 W 15th St 67735

128.88 Kimminau, Lyle Subd-First Addn to Goodland Blk-10 Lot-4 Prop Addn: 705 W 9th St 67735

571.07 Klinge, Dennis & Peggy Sec-33 Twp-08 Rng-38 Prop Addn: 6220 Road 28 67735

860.29 Koch, Diane L Subd-C K & N Addn to Goodland Blk-3 Lot-25 Prop Addn: 1503 Cherry Ave 67735

482.17 Lance, Leroy & Ruby I (TOD) Subd-First Addn to Goodland Blk-35 Prop Addn: 622 W 14th St 67735

94.74 Ledesma, Antonio Sec-29 Twp-08 Rng-42 Prop Addn: Hwy 24 67741

88.26 Ledesma, Antonio Sec-29 Twp-08 Rng-42 Prop Addn: 265 US Hwy 24 67741

219.41 Lester, Ron & Joyce E Subd-Goodland Original Town Blk-84 Prop Addn: 1408 Grand Ave 67735

161.86 Liby, Denise (Schmidt) Etal Sec-34 Twp-08 Rng-42 Prop Addn: Co Rd

561.79 Linnell, Beckie Sec-05 Twp-08 Rng-40 Prop Addn: 6702 Road 15 67735

706.30 Lucero, Charles L Subd-C K & N Addn to Goodland Blk-6 Prop Addn: 1525 Broadway Ave 67735

33.78 M & M Farms TR Sec-22 Twp-08 Rng-38 Prop Addn: Co Rd

670.12 M & M Farms TR Subd-Edson Original Town Blk-1 Sec-22 Twp-08 Rng-38 Prop Addn: Co Rd

1,611.78 M & M Farms TR Subd-Edson Original Town Blk-1 Sec-22 Twp-08 Rng-38 Prop Addn: Co Rd

40.69 M D & M Liv TR Sec-22 Twp-08 Rng-38 Prop Addn: Co Rd

82.25 M D & M Liv TR Sec-22 Twp-08 Rng-38 Prop Addn: Co Rd

107.10 M D & M Liv TR Sec-22 Twp-08 Rng-38 Prop Addn: Co Rd

10,075.27 MAA Goodland Hospitality LLC Subd-Goodland City Tracts Sec-25

Twp-08 Rng-40 Prop Add: 2420 Commerce Rd 67735

474.64 McGlone, Michael Charles Subd-Goodland Original Town Blk-90 Prop Addn: 309 E 14th St 67735

346.47 Mendiola, Jorge & Araceli Subd-3rd Addn to Goodland Blk-13 Prop Addn: 1116 Cherry Ave 67735

3,012.20 Merchant, Mayuri & Sailesh Subd-Goodland City Tracts Sec-29 Twp-08 Rng-39 Prop Addn: 811 E Hwy 24 67735

554.67 Migchelbrink, Cary C; Vallejo, Tonia S & Sec-16 Twp-07 Rng-38 Prop Addn: Co Rd

836.30 Miller, Kenneth P Subd-2nd Addn to Goodland Blk-37 Lot-1 Prop Addn: 602 Sherman Ave 67735

249.76 Miller, Rodney B Etal Subd-2nd Addn to Goodland Blk-30 Lot-16 Prop Addn: 515 Broadway Ave 67735

44.39 MJR Investments, LLC Sec-18 Twp-07 Rng-40

12.73 MJR Investments, LLC Sec-19 Twp-06 Rng-41

50.82 MJR Investments, LLC Sec-05 Twp-07 Rng-41

50.82 MJR Investments, LLC Sec-02 Twp-07 Rng-42

12.73 MJR Investments, LLC Sec-14 Twp-07 Rng-42

50.82 MJR Investments, LLC Sec-33 Twp-07 Rng-42

12.77 MJR Investments, INC Sec-05 Twp-06 Rng-37

38.09 MJR Investments, LLC Sec-13 Twp-07 Rng-40

286.50 Mojica, Isreal & Mojica, Samantha Subd-Sharp's Addn TO Goodland Blk-12 Lot-16 Prop Addn: 1615 Montana Ave 67735

208.47 Montoya, Jose J & Esther Subd-Kanorado Original Town Blk-11 Prop Addn: Walnut St 67741

429.06 Moreno, Jesus F Barrera Moreno, David F Barrera Subd-Goodland City Tracts Sec-19 Twp-08 Rng-39 Prop Addn: 1619 Kansas Ave 67735

674.35 Mote, O D Subd-2nd Addn to Goodland Blk-11 Lot-16 Prop Addn: 211 Center Ave 67735

804.56 Musil, Melvin L JR & Cynthia Lynn Subd-Goodland Original Town Blk-71 Prop Addn: 312 W 13th St 67735

71.67 Nemechek, Melvin R & Nemechek, Victor M Sec-32 Twp-09 Rng-39 Prop Addn: Co Rd

101.66 New Goodland Energy Center LLC Sec-20 Twp-08 Rng-40 Prop Addn: Co Rd

2.99 New Goodland Energy Center LLC Subd-Goodland Energy Center Lot-26 Prop Addn: Winderidge Dr

2.99 New Goodland Energy Center LLC Subd-Goodland Energy Center Lot-25 Prop Addn: AgriPower Dr 67735

2.99 New Goodland Energy Center LLC Subd-Goodland Energy Center Lot-11 Prop Addn: Winderidge Dr

131.75 New Goodland Energy Center LLC Subd-Goodland Energy Center Lot-12 Prop Addn: AgriPower Dr 67735

3.36 New Goodland Energy Center LLC Subd-Goodland Energy Center Lot-10 Prop Addn: Energy Park Dr

3.36 New Goodland Energy Center LLC Subd-Goodland Energy Center Lot-1 Prop Addn: Winderidge Dr

3.36 New Goodland Energy Center LLC Subd-Goodland Energy Center Lot-2 Prop Addn: AgriPower Dr 67735

3.36 New Goodland Energy Center LLC Subd-Goodland Energy Center Lot-9 Prop Addn: Energy Park Dr

3.36 New Goodland Energy Center LLC Subd-Goodland Energy Center Lot-8 Prop Addn: Energy Park Dr

3.36 New Goodland Energy Center LLC Subd-Goodland Energy Center Lot-3 Prop Addn: AgriPower Dr 67735

7,564.47 New Goodland Energy Center LLC Subd-Goodland Energy Center Lot-4 Prop Addn: Synergy Dr

2.99 New Goodland Energy Center LLC Subd-Goodland Energy Center Lot-13 Prop Addn: Energy Park Dr

2.99 New Goodland Energy Center LLC Subd-Goodland Energy Center Lot-24 Prop Addn: Railroad Dr 67735

4,559.75 New Goodland Energy Center LLC Subd-Goodland Energy Center Lot-16 Prop Addn: 201 Energy Park Dr 67735

4,476.51 New Goodland Energy Center LLC Subd-Goodland Energy Center Lot-5 Prop Addn: Energy Park Dr 67735

144,506.48 New Goodland Energy Center LLC Subd-Goodland Energy Center Lot-5 Prop Addn: 200 Energy Park Dr 67735

219.49 Northdurft, Bradley J Subd-C K & N Addn to Goodland Blk-10 Lot-6 Prop Addn: 1524 Sherman Ave 67735

613.26 Northern Trust Co (The) Sec-14 Twp-08 Rng-42 Prop Addn: Co Rd

259.59 Northern Trust Co (The) Sec-29 Twp-06 Rng-40 Prop Addn: Co Rd

311.72 Northdurft, Jerome D & Virginia L Sec-26 Twp-08 Rng-39 Prop Addn: 2326 Road 63 67735

57.22 Orchard, Gary Subd-Hartstine's 2nd to Kanorado Blk-20 Lot-23 Prop Addn: Oak St 67741

213.64 Orchard, Gary Subd-Hartstine's 2nd to Kanorado Blk-21 Lot-7 Prop Addn: Oak St 67741

27.24 Orchard, Gary Subd-Hartstine's 2nd to Kanorado Blk-21 Lot-25 Prop Addn: Western Ave 67741

38.09 Ormsby Land & Mfg. Co. Sec-34 Twp-09 Rng-38

464.57 Pace, Charles Michael Subd-Replate BLKS 6-9 Kanorado Blk-8 Lot-39 Prop Addn: 115 Western St 67741

47.61 Pancake, Amy J & Gary D Sec-03 Twp-09 Rng-40

177.70 Paterniti, Tim Subd-C K & N Addn to Goodland Blk-18 Prop Addn: 1601 Clark Ave 67735

136.45 Pena, Valentino & Kristi Subd-3rd Addn to Goodland Blk-12 Lot-7 Prop Addn: 1016 Cherry Ave 67735

209.67 Peter, Arlene J Rev TR Sec-09 Twp-06 Rng-40 Prop Addn: CO RD

36.53 Peters, Linda Jo Sec-27 Twp-07 Rng-38

185.28 Phillips, Ed Subd-First Addn to Goodland Blk-39 Lot-11 Prop Addn: 724 W 15th St 67735

184.78 Potterf, Andrew L Subd-Sharp's Addn to Goodland Blk-3 Lot-7 Prop Addn: 1536 Syracuse Ave 67735

8.31 Power Drive Supply LLC Subd-Replate Blks 6-9 Kanorado Blk-8 Lot-27 Prop Addn: 107 Western St 67741

75.96 R C Enterprises of Brewster, KS. LLC Sec-25 Twp-10 Rng-37

4,964.40 Rasure, Daniel P Strnad, Jill E Subd-Sugar Hills Golf Club Sec-21 Twp-08 Rng-40 Prop Addn: 6488 Road 16 67735

95.45 Reyna, Jimmy & Dominga Subd-Sharp's Addn to Goodland Blk-8 Lot-3 Prop Addn: 1612 Colorado Ave 67735

740.45 Reyna, Jimmy G & Dominga Subd-Sharp's Addn to Goodland Blk-8 Lot-6 Prop Addn: 1624 Colorado Ave 67735

37.03 Rooney, Patricia A aka Kelly-Brennan, Briahn Sec-27 Twp-09 Rng-37

36.41 Sanderson, Kenneth B Sec-02 Twp-09 Rng-38 Prop Addn: Co Rd

408.66 Schaffer, Dale & Tasha Subd-Goodland Original Town Blk-67 Lot-11 Prop Addn: 223 W 11th St 67735

349.58 Schaffer, Dale & Tasha Subd-2nd Addn TO Goodland Blk-17 Prop Addn: 324 Broadway Ave 67735

245.88 Schaffer, Dale & Tasha Subd-Goodland Sub of Original Town Blk-1 Lot-1 Prop Addn: 1502 Caldwell Ave 67735

1,170.86 Schiefen, Patricia A Subd-Goodland Original Town Blk-59 Lot-15 Prop Addn: 1019 Center Ave 67735

100.63 Schroeder, Carlene Subd-Sharp's Addn to Goodland Blk-1 Lot-6 Prop Addn: 1530 Kansas Ave 67735

47.89 Schroeder, Carlene Subd-Sharp's Addn to Goodland Blk-1 Lot-7 Prop Addn: Kansas Ave 67735

204.56 Scott, Arnold Subd-2nd Addn to Goodland Blk-19 Lot-18 Prop Addn: 315 Sherman Ave 67735

181.33 Scott, Arnold R Subd-First Division of First Addn Blk-9 Prop Addn: 1503 Syracuse Ave 67735

282.33 Scott, Arnold R Subd-2nd Addn to Goodland Blk-48 Lot-17 Prop Addn: 709 Grand Ave 67735

229.39 Scott, Arnold R Subd-Sharp's Addn to Goodland Blk-2 Prop Addn: 1505 Syracuse Ave 67735

402.72 Shepard, Dan L Subd-3rd Addn to Goodland Blk-12 Lot-23 Prop Addn: 1001 Caldwell Ave 67735

1,023.65 Short, Tamara Subd-First Addn to Goodland Blk-38 Lot-1 Prop Addn: 1420 Montana Ave 67735

17,446.72 Shreeji Motel Inc Subd-Goodland City Tracts Sec-25 Twp-08 Rng-40 Prop Addn: 2218 Commerce Rd 67735

493.63 Slusher, Harold Wayne, II Subd-3rd Addn to Goodland Blk-22 Lot-8 Prop Addn: 528 E 14th St 67735

260.67 Smith, Chandler Etal Subd-3rd Addn to Goodland Blk-11 Prop Addn: 517 E 10th St 67735

739.47 Smith, Chandler Etal Subd-3rd Addn to Goodland Blk-20 Lot-13 Prop Addn: 1223 Caldwell Ave 67735

3,496.10 Smith, Clifford E Subd-C K & N Addn to Goodland Blk-26 Lot-1 Prop Addn: 421 E 17th St 67735

129.54 Smith, Clifford E Subd-C K & N Addn to Goodland Prop Addn: E 17th St 67735

621.91 Smith, James A & Velda O Sec-31 Twp-08 Rng-39 Prop Addn: 3353 Sunset Dr 67735

35.42 Smith, Tillie Etal Subd-Sharp's Addn TO Goodland Blk-14 Lot-1 Prop Addn: Montana Ave 67735

338.52 Smith, Tillie L (TOD) Subd-3RD Addn to Goodland Blk-7 Prop Addn: 604 E 10th St 67735

838.02 Somers, Brian K & Carolyn R Subd-2nd Addn to Goodland Blk-16 Prop Addn: 302 Clark Ave 67735

309.61 Soper, Jeff Subd-First Addn to Goodland Blk-12 Lot-32 Prop Addn: 518 W 10th St 67735

206.58 Soto, Erika Perez Etal Subd-3rd Addn to Goodland Blk-23 Prop Addn: 1310 College Ave 67735

36.53 Stampler, Judith Sec-27 Twp-07 Rng-38

36.41 Stampler, Ronald Sec-34 Twp-07 Rng-38

31.88 Stasser, M Merle Sec-19 Twp-07 Rng-41 Prop Addn: Co Rd

31.88 Stasser, M Merle Sec-20 Twp-07 Rng-41 Prop Addn: Co Rd

76.32 Stasser, M Merle Sec-29 Twp-07 Rng-41 Prop Addn: Co Rd

135.05 Stasser, M Merle Sec-30 Twp-07 Rng-41 Prop Addn: Co Rd

236.83 Stegman, Dennis W Etal Sec-30 Twp-08 Rng-39 Prop Addn: Hwy 24 67735

38.09 Strange, Dorothy Robert & Elvin E Sec-10 Twp-09 Rng-38

2,096.28 Studer, Roger J & Carmen M

Subd-First Addn to Goodland Blk-34 Lot-1 Prop Addn: 1310 Syracuse Ave 67735

11,843.99 Sunrich Aquisition Inc Subd-Goodland Industrial Park Blk-2 Lot-2 Prop Addn: 1701 Industrial Loop 67735

142.01 Sunrich LLC Subd-Goodland City Tracts Sec-24 Twp-08 Rng-40 Prop Addn: Hwy 27 67735

1,407.39 Tabor, Misty D Subd-First Addn to Goodland Blk-6 Prop Addn: 823 Cattlerail Ave 67735

358.52 Tracy, Mary Lou Subd-Goodland Sub of Blks to Orig Blk-78 Prop Addn: 1310 Clark Ave 67735

10,012.69 Trandel, Thomas Subd-N Main Addn Sec-18 Twp-08 Rng-39 Prop Addn: 214 N Main Ave 67735

277.06 Turner, Rose M Subd-Kohler First Add to Goodland Blk-2 Prop Addn: 101 Walnut Ave 67735

262.40 Urban, Rocky E Subd-2nd Addn to Goodland Blk-4 Lot-11 Prop Addn: 117 Center Ave 67735

788.77 Valdez, Donald & Robin Subd-Replate Blks 6-9 Kanorado Blk-7 Lot-17 Prop Addn: 203 Western St 67741

261.02 Vallejo, T

All Central Time, for Kansas Mountain Time Stations subtract an hour

# TV CHANNEL GUIDE

Tuesday Evening		August 6, 2013									
	7:00	7:30	8:00	8:30	9:00	9:30	10:00	10:30	11:00	11:30	
ABC	Extreme Weight Loss				Body of Proof	Local	Jimmy Kimmel Live	Nightline			
CBS	NCIS		NCIS: Los Angeles		Person of Interest	Local	Late Show Letterman	Ferguson			
NBC	Hollywood Game Night				Local	Local	Local	Tonight Show w/Leno	J. Fallon		
FOX	So You Think				Local						
Cable Channels											
A & E	Storage	Storage	Barter Kings		Barter Kings		Storage Wars		Local		
AMC	O Brother, Where Art Thou?		Mercury Rising				16 Blocks		Local		
ANIM	Wild Arabia		River Monsters		Wild Arabia		Monsters		Local		
BET	The Game	The Game	The Game	The Game	Husbands		Wendy Williams Show	Best Man	Local		
BRAVO	Interior Therapy		Interior Therapy		Million Dollar		Happens	Property	Interior Therapy		
CMT	Local	Local	Reba	Reba	Mrs. Doubtfire				Local		
CNN	Piers Morgan Live		Anderson Cooper 360		E. B. OutFront		Piers Morgan Live	Anderson	Local		
COMEDY	Tosh.0	Tosh.0	Drunk	The Jesel	Daily	Colbert	Drunk	The Jeselnik Offensi	Local		
DISC	Local	Local	How Jaws-the World		Return of Jaws: Shar		I Escaped Jaws	Spawn of Jaws	Local		
DISN	Local	Local	Shake It	Austin	Ratatouille			Dog	Local		
E!	Kardashian				Total Divas		Chelsea	El News	Chelsea		
ESPN	World Series		World Series		SportsCenter			SportCtr	Local		
ESPN2	Little League		WNBA Basketball				Baseball Tonight	Nine/IX	Local		
FAM	Twisted		The Vineyard		The 700 Club		Prince	Prince	Paid	Local	
FOOD	Local	Local	Chopped		Chopped		Chopped		Local		
FX	Something Borrowed				Something Borrowed				Local		
HGTV	Property	Property	Power Broker		Hunters	Hunt Intl	Renovate	Renovate	Power Broker		

©2009 Hometown Content, listings by Zap2it

Wednesday Evening		August 7, 2013									
	7:00	7:30	8:00	8:30	9:00	9:30	10:00	10:30	11:00	11:30	
ABC	Middle	Suburg.	Mod Fam	Neighbors	ABC's The Lookout	Local	Jimmy Kimmel Live	Nightline			
CBS	Big Brother		Criminal Minds		CSI: Crime Scene	Local	Late Show Letterman	Ferguson			
NBC	America's Got Talent				Local	Local	Tonight Show w/Leno	J. Fallon			
FOX	MasterChef		MasterChef		Local						
Cable Channels											
A & E	Duck D.	Duck D.	Duck D.	Duck D.	Barter Kings		Duck D.	Duck Dynasty		Local	
AMC	Grease		The Killing				The Uninvited		Local		
ANIM	Wildman	Wildman	Wildman	Wildman	Gator Boys		Wildman	Wildman	Local		
BET	Luv				Sunday Best		The Wendy Williams Show		Local		
BRAVO	Million Dollar LA		Million Dollar LA		Top Chef Masters		Happens	Million Dollar LA	Top Chef		
CMT	Local	Local	Reba	Reba	Happy Gilmore			Hillbilly	Hillbilly		
CNN	Piers Morgan Live		Anderson Cooper 360		E. B. OutFront		Piers Morgan Live	Anderson	Local		
COMEDY	South Pk	South Pk	Futurama	Futurama	Daily	Colbert	Futurama	South Park	Local		
DISC	Local	Local	I Escaped Jaws		Voodoo Sharks		Top 10 Sharkdown	Great White Serial K	Local		
DISN	Local	Local	Shake It	Austin	Austin	Austin	Let It Shine		Local		
E!	Kardashian		Kardashian		The Soup	The Soup	Chelsea	El News	Chelsea		
ESPN	MLB Baseball				SportsCenter			SportCtr	Local		
ESPN2	Little League		NFL Kickoff		NFL Live		Baseball Tonight	NASCAR	Local		
FAM	Spell-Mageddon		Melissa	Daddy	The 700 Club		Prince	Prince	Sexiest Local	Local	
FOOD	Local	Local	Restaurant: Im.		Restaurant: Im.		Restaurant: Im.	Mystery D	Mystery D	Local	
FX	Taken				The Bridge		The Bridge		Local		
HGTV	Love It or List It		Property Brothers		Hunters	Hunt Intl	Brother vs. Brother	Property Brothers	Local		
HIST	Larry the Cable Guy		Top Shot All-Stars		Pawn	Pawn	Pawn	Pawn Stars	Local		
LIFE	Morning Glory		Someone Like You		Morning Glory				Local		
MTV	The Challenge		The Challenge: Rivals II		The Challenge		Catfish: The TV Show		Local		
NICK	Local	Local	Sam & Cat	Victorioru	Full H'se	Full H'se	Full H'se	Full H'se	Full H'se	Local	
SCI	Paranormal Witness		Joe Rogan Questions		Paranormal Witness		Joe Rogan Questions	Joe Rogan	Local		
SPIKE	Cops	Cops	Fight Master		Stealth				Local		
TBS	Big Bang	Big Bang	Big Bang	Deal With	Conan		Deal With	Conan	Local		
TCM	Murder, He Says		Double Indemnity		There's Always Tomorrow				Local		
TLC	Local	Local	Surviving	Surviving	Honey	Honey	Honey	Raising Fame	Honey	Local	
TNT	Franklin & Bash		Castle		Franklin & Bash		Falling Skies	Mentalist	Local		
TOON	King/Hill	King/Hill	Amer. Dad	Amer. Dad	Family Guy		Chicken	Aqua Teen	Squid	Local	
TRAV	Adam Rich	Adam Rich	Best Daym	Best Daym	Food Paradise		Adam Rich	Best Daym	Local		
TV LAND	Friends	Friends	Cleveland	The Exes	Soul Man	King	King	Cleveland	Local		
USA	Royal Pains		Necessary Roughness		Suits		Royal Pains		Local		
VH1	Couples Therapy		Couples Therapy		Love, Hip Hop		Couples Therapy	Arthur	Local		
WGN	Rules	Rules	WGN News at Nine		Funniest Home Videos		Rules	Rules	30 Rock	Local	
Premium Channels											
HBO	Local	Local	Hard	The Apparition			The Newsroom	True Blood			
MAX	Local	Local	American Reunion		Banshee		Banshee	Strike Back			
SHOW	Local	Local	Twisted		Ray Donovan		60 Minutes Sports	Dexter			

©2009 Hometown Content, listings by Zap2it

Thursday Evening		August 8, 2013									
	7:00	7:30	8:00	8:30	9:00	9:30	10:00	10:30	11:00	11:30	
ABC	Wipeout		Motive		Rookie Blue	Local	Jimmy Kimmel Live	Nightline			
CBS	Big Bang	Two Men	Big Brother		Elementary	Local	Late Show Letterman	2013 PGA			
NBC	The Winner Is...		The Winner Is...		Hollywood Game Night	Local	Tonight Show w/Leno	J. Fallon			
FOX	Glee		New Girl	Mindy	Local						
Cable Channels											
A & E	The First 48		Panic 9-1-1		Panic 9-1-1		The First 48		Local		
AMC	S.W.A.T.		Super Croc		River Monsters			National	Local		
ANIM	River Monsters		Streets		River Monsters		The Wendy Williams Show		Local		
BRAVO	Housewives/OC		Housewives/OC		Housewives/OC		Happens	Property	Housewives/NJ		
CMT	Local	Local	Reba	Reba	Shanghai Knights				Cops Rel.		
CNN	Piers Morgan Live		Anderson Cooper 360		E. B. OutFront		Piers Morgan Live	Anderson	Local		
COMEDY	Sunny	Sunny	Tosh.0	Tosh.0	Daily	Colbert	Tosh.0	Tosh.0	Daily	Local	
DISC	Local	Local	Great White Serial K		Spawn of Jaws: Shark		Sharkpocalypse	Alien Sharks	Local		
DISN	Local	Local	Shake It	Austin	Teen Beach Movie		Vanessa	El News	Austin	Local	
E!	Kardashian		Kardashian		Chelsea		SportsCenter	El News	Chelsea		
ESPN	MLB Baseball				SportsCenter			SportCtr	Local		
ESPN2	Little League		Nation		Nation		Baseball Tonight	NASCAR	Local		
FAM	Twister		The 700 Club		Prince		Prince	Insanity!	Local		
FOOD	Local	Local	Chopped		Chopped		Chopped	Anne Burrell	Local		
FX	Just Go With It		Chopped	Anger	Wilfred	Wilfred	Wilfred	Jay and Silent Bob Strike Back	Local		
HGTV	Rehab	Rehab	Renovation Raiders		Hunters	Hunt Intl	Hunters	Hunt Intl	Renovation Raiders	Local	
HIST	Pawn		Hatfields		Pawn		Pawn	Pawn Stars	Local		
LIFE	Project Runway		Supermarket		Project Runway		Project Runway		Local		
MTV	Ridic.	Ridic.	Ridic.		Strangers	Ridic.	Black Sheep	Full H'se	Full H'se	Local	
NICK	Local	Local	SpongeBob		Teenage Mutant Ninja		Full H'se	Full H'se	Local		
SCI	Invasion Roswell		SpongeBob		Species: Awake		Invasion		Local		
SPIKE	IMPACT Wrestling				Predator				Local		
TBS	Big Bang	Big Bang	Sullivan	Big Bang	Conan		Sullivan	Conan	Local		
TCM	Ben-Hur: A Tale of the Christ		Sullivan	Student Prince	Conan		Sullivan	Mata Hari	Local		
TLC	Local	Local	Say Yes	Say Yes	Say Yes	Say Yes	Four Weddings	Wedding Island	Local		
TNT	Hawaii Five-0		Hawaii Five-0		Perception		Franklin & Bash	Cold Case	Local		
TOON	King/Hill	King/Hill	Amer. Dad	Amer. Dad	Family Guy		Childrens	Newsread	Squid	Local	
TRAV	Mentalist	Mentalist	Mysteries-Museum		Mysteries-Museum		Monumental Mysteries	Mysteries	Local		
TV LAND	Raymond	Raymond	King	King	King		Everybody-Raymond	Raymond	Local		
USA	Burn Notice		Graceland		Covert Affairs		Burn Notice		Local		
VH1	Love, Hip Hop		Love, Hip Hop		Love, Hip Hop		Love, Hip Hop		Local		
WGN	How I Met	How I Met	WGN News at Nine		Funniest Home Videos		Rules	Rules	30 Rock	Local	
Premium Channels											
HBO	Local	Local	Anchorman		The Newsroom		The Bourne Legacy		Strike Back		
MAX	Local	Local	Snake Eyes		White Men Can't Jump				Local		
SHOW	Local	Local	Daylight		History, the Eagles				Local		

©2009 Hometown Content, listings by Zap2it

Friday Evening		August 9, 2013									
	7:00	7:30	8:00	8:30	9:00	9:30	10:00	10:30	11:00	11:30	
ABC	Shark Tank		Would You Fall		20/20	Local	Jimmy Kimmel Live	Nightline			
CBS	Undercover Boss		Hawaii Five-0		Blue Bloods	Local	Late Show Letterman	2013 PGA			
NBC	Betty	Betty	Dateline NBC			Local	Tonight Show w/Leno	J. Fallon			
FOX	Bones		The Following		Local						
Cable Channels											
A & E	Storage	Storage	Storage	Storage	Shelby	Shelby	Storage Wars		Local		
AMC	Break-Bad	Breaking Bad	Breaking Bad		Breaking Bad		Breaking Bad		Local		
ANIM	Tanked		Tanked		Tanked		Tanked	Treehouse	Local		
BET	Jason's Lyric		Comedy- Stars		The Wendy Williams Show				Local		
BRAVO	Housewives/OC		Tia & Tamara		Scary Movie			Scary Movie	Local		
CMT	Local	Local	Reba	Reba	Jerry Maguire				Local		
CNN	Piers Morgan Live		Anderson Cooper		Stroumbouloupoulos		Anderson Cooper 360	A Cooper	Local		
COMEDY	Work.	Work.	Work.	Tosh.0	J. Oliver		Get Him to the Greek		Local		
DISC	Local	Local	Alien Sharks		The Great White Gaun		Gold Rush	Saint Hoods	Local		
DISN	Local	Local	Shake It	Austin	ANT Farm	Jessie	Phineas	Gravity	Dog	Good Luck	
E!	Vanessa	The Soup	Fashion Police		Fashion Police		Chelsea	El News	Chelsea		
ESPN	Little League		SportsCenter		SportsCenter			SportCtr	Local		
ESPN2	ATP Tennis		Boxing		Baseball Tonight		Coaches	Local	Local		
FAM	Zookeeper		The 700 Club		Prince		Prince	Paid	Local		
FOOD	Local	Local	Restaurant: Im.		Diners		Diners	Diners	Diners	Local	
FX	Rio		Rio		Rio		Rio	Tropic Thunder	Local		
HGTV	Extreme Homes		Extreme Homes		Hunters	Hunt Intl	Hunt Intl	Hunt Intl	Extreme Homes	Local	

©2009 Hometown Content, listings by Zap2it

Saturday Evening		August 10, 2013									
	7:00	7:30	8:00	8:30	9:00	9:30	10:00	10:30	11:00	11:30	
ABC	Motive		20/20								



### CARD OF THANKS

**Thank you for the cards,** phone calls and gifts for our 70th anniversary. -Delmer and Arleta Musil. -8-2-8-6-

### WANTED

**Want to buy John Deere diesel engines,** running or not. (785) 263-6275. -8-6-9-6-

**Junk batteries,** non-ferrous metals and iron. Darrel Bowen. Phone 785-899-2578. -tfn-

### NOTICE

**To whom it may concern:** S&M Repair, LLC, Goodland, KS, will have the following vehicles for auction on August 26, 2013, at 8 a.m. MT.. 1. 2005 Peterbilt, red in color, VIN#1XB5EB9X1JD861125. 2. 2004 Kia Sedona, red in color, VIN#KNDUP132956682784. 3. 1994 Pontiac Grand Prix SE, white in color, VIN#1G2WJ52M9RF290211. For any questions about the above vehicles, please contact Drew Miller at (785) 899-5423. -7-26-8-6-

### HELP WANTED

**Progressive company looking to hire** full-time plumbers and HVAC/R technicians. Contact Mitch McClure at McClure Plumbing and Heating, Inc. 720 N. Franklin Ave., Colby, KS 67701. Phone: (785) 462-7314. -7-30-8-9-

**CBS/CSS RECOVERY SPECIALIST,** GOODLAND BRANCH OFFICE. High Plains Mental Health Center currently has a full-time position available in our Goodland Branch Office for a Recovery Specialist. Work focuses primarily on providing patients and their families with medically necessary services. Qualifications include at least (1) a BA/BS degree or be equivalent by work experience. Candidate must also be able to provide after hours on call services. Must possess valid Kansas driver's license and a good driving record. Must also be able to successfully pass an intensive background check. Interested applicants should send their resume, transcript,

three professional references and a letter of interest to Amy Bird, 208 East 7th Street, Hays, KS 67601. High Plains Mental Health Center is an Equal Opportunity Employer M/F/D/V. -7-30-8-9-

**Sherman County 911 Communications** is accepting applications for the position of Communication Officer (911 Dispatcher). This is a full-time position with benefits. Applicant must be able to pass written examination, listening skills test, type 35 wpm or higher, have a high school diploma or equivalent, and pass a background check and drug screening. Applications are available 24/7 at the dispatch center located in the basement of 204 W. 11th Street, Goodland. Applications will be accepted until August 9th. Sherman County is an EOE. -7-26-8-6-

**School Resource Officer Position:** The Goodland Police Department is accepting applications for the position of School Resource Officer (SRO). The SRO is responsible for providing law enforcement services on USD 352 campuses; educating students on a variety of topics

and programs; coordinating security for district events; and addressing student and parent concerns. Applicants must possess a high school diploma, be over the age of 21, and have the ability to obtain Kansas Law Enforcement Standards. Experience preferred. Hiring range DOQ, plus excellent benefits. Applications are available in the City Office, 204 W. 11th or at cityofgoodland.org. Position open until filled, with first review of applications August 9. EOE. -7-23-8-6

**Part-time CNA wanted for** Goodland Home Health. May pick up application at 655-B East 22nd in Goodland. -7-19-8-19-

**HELP WANTED: Competitive CaseIH Dealership** looking for full-time Sales People. Competitive wages, benefits, health and retirement available. Call Ag Power Equipment Co. in Goodland at (785) 899-3432. -7-12-8-12-

**PSI Transport is always looking** for good company livestock and grain haulers as well as shop mechanics. Competitive pay, life/health/dental benefits and bonus program available. EOE. (785)

675-3477. -6-10-TFN

### FOR SALE

**1987 Olds 88, 175,000 miles,** runs great, \$700. Aqua VU Scout II underwater camera, like new, \$75. Call (785) 821-1178.

**Steel buildings, big or small.** Save up to 50% for best deal with contract construction to complete. Source#18X. (800) 964-8335. -7-26-8-6-

**Side by side Whirlpool refrigerator.** \$350. Call in evenings, (785) 891-3761. -7-26-8-13-

**LAND FOR SALE: 310 acres of grassland** 9 miles south of Stratton. For sale by owner. Water will on property. For more information call (303) 522-5346. -7-12-8-12-

**FIREWOOD FOR SALE IN GOODLAND.** Call (785) 890-7224. -12-11-tfn-

### FOR RENT

**1502 Syracuse, Goodland.** 2 small bedroom house for rent. Call (785) 728-7322. -8-6-8-16-

**3 bedroom house,** 1 bedroom apartment available soon in Goodland. Also very nice 3 bedroom house/apartment with furnished commons area for students/individuals or family. High quality living conditions and affordable for responsible tenants. Call (785) 821-0106.

-7-23-8-23-

**Houses and apartments in** Goodland, KS. All sizes. Call for details. (785) 890-6538. -6-12-tfn

**Houses and apartments.** Cole Real Estate. 785-899-2683. -tfn-

### SERVICES

**Beckman Fencing. Need a fence?** We can build it! Barbwire, pipe corrals, continuous panels, chain link, privacy fence...also any concrete flatwork. Contact Jared at (785) 672-7607. -7-26-8-26-

**Failed corns, custom swathing and baling.** 30ft. draper swather, no crimping. Save your dried out leaves. Will do on shares or buy standing corn in the field. Call (785) 332-5588 or (785) 772-5040. -7-26-8-20-

**MLH Vacuum Repair & Maintenance Service.** (785) 899-5222. All makes and models, reasonable prices, free estimates, plus pickup and delivery available. -7-19-8-19-

**Burlington-Goodland area.** Residential overhead door service and repair, 20 years experience. Call Gary at (719) 350-0705. -7-12-tfn

**CAT'S TNT for jewelry,** vinyl graphic designs, massages, quilting and more! Stop by 1018 Main, Goodland - 3-23-tfn

## public notice

### IN THE DISTRICT COURT OF SHERMAN COUNTY, KANSAS

Wells Fargo Bank, National Association Plaintiff,

vs.

Debra L. Smee and Raymond L. Smee, et al., Defendants.

Case No. 13CV8  
Division 2  
K.S.A. 60  
Mortgage Foreclosure  
(Title to Real Estate Involved)

the following described real estate located in the County of Sherman, State of Kansas, to wit:

THE FOLLOWING DESCRIBED PROPERTY LOCATED IN SHERMAN COUNTY, KANSAS: THE NORTH FIFTY FEET (N 50') OF LOT ONE (1), BLOCK FIVE (5), KOHLER FIRST ADDITION TO THE CITY OF GOODLAND, KANSAS, ACCORDING TO THE RECORDED PLAT THEREOF.

SHERIFF OF SHERMAN COUNTY, KANSAS

Respectfully Submitted,  
By:  
Shawn Scharenborg, KS # 24542  
Sara Knittel, KS # 23624  
Kelli N. Breer, KS # 17851  
Kozeny & McCubbin, L.C. (St. Louis Office)  
12400 Olive Blvd., Suite 555  
St. Louis, MO 63141  
Phone: (314) 991-0255  
Fax: (314) 567-8006  
Email: sscharenborg@km-law.com  
Attorney for Plaintiff

Published in The Goodland Star-News, Tuesday, July 23 and 30 and August 6, 2013.

### NOTICE OF SHERIFF'S SALE

Under and by virtue of an Order of Sale issued by the Clerk of the District Court in and for the said County of Sherman, State of Kansas, in a certain cause in said Court Numbered 13CV8, wherein the parties above named were respectively plaintiff and defendant, and to me, the undersigned Sheriff of said County, directed, I will offer for sale at public auction and sell to the highest bidder for cash in hand at 10:00 AM, on 08/20/2013, at the front door of Sherman County Courthouse,

## HELP WANTED

Hiring for Maintenance, plant operator, Equipment operator, truck driver and a Feed Sales. These are full-time positions with competitive wages and benefits. Applications available online at: [www.wpellc.com](http://www.wpellc.com) or you can pick up an application at:

3022 County Rd 18  
Oakley, KS 67748  
Phone: 785-672-8810



## JOIN A WINNING TEAM

Are you looking for a rewarding career?

### ATWOOD

- Store Manager
- Asst. Store Manager
- Kitchen Help
- Cashier

### OAKLEY

- Store Manager
- Asst. Store Manager
- Kitchen Help
- Cashier

### GOODLAND

- Store Manager
- Asst. Store Manager
- Kitchen Help
- Cashier
- Delivery Driver

### COLBY

- Delivery Driver

Full-time & Part-time hours available. Must be able to work weekends & Holidays.

### Check out these benefits:

- Advancement Opportunities
- Medical/Dental Insurance
- 401(k) Savings Plan
- Flexible Spending Account
- Casey's Stock Purchase Plan
- Paid Training
- Vacation/Sick Leave

Apply at Individual Store or online at [www.caseys.com](http://www.caseys.com)  
EOE



## kansas classifieds

### Health/Beauty

ARE YOU A 45-79 YEAR OLD WOMAN WHO DEVELOPED DIABETES WHILE ON LIPITOR? If you used Lipitor between December 1996 and the Present and were diagnosed with diabetes while taking Lipitor, you may be entitled to compensation. Call Charles H. Johnson Law toll-free 1-800-535-5727

### Help Wanted

Can You Dig it? Heavy Equipment Operator Training! 3 Weeks Hands On Program. Bulldozers, Backhoes, Excavators. Lifetime Job Placement Assistance. National Certifications. VA Benefits Eligible. 1-866-362-6497

### Help Wanted

NOW HIRING! Truck Driving School Instructors. JOIN CRSTs brand new training school in Cedar Rapids, Iowa! Relocation assistance provided. Call: 866-397-7407; email: sandersen@crst.com

### Help Wanted

Partners In Excellence OTR Drivers APU Equipped Pre-Pass EZ-pass passenger policy. 2012 & Newer equipment. 100% NO touch. Butler Transport 1-800-528-7825

### Help Wanted/Truck Driver

Drivers: CDL-A. Train and work for us! Professional, focused CDL training available. Choose Company Driver, Owner Operator, Lease Operator or Lease Trainer. (877) 369-7885 [www.w](http://www.w)

CentralTruckingDrivingJobs.com

### Help Wanted/Truck Driver

Exp. Flatbed Drivers: Regional opportunities now open with plenty of freight & great pay! 800-277-0212 or [primeinc.com](http://primeinc.com)

### Help Wanted/Truck Driver

Experienced Drivers - Excellent Regional Runs! Great Home Time & Benefits! Up to \$.40 Per Mile, Weekly Pay, & Late Model Equipment. Arnold Transportation [www.drivearnold.com](http://www.drivearnold.com) 888-742-8056

### Misc. For Sale

Manufactured & Modular Homes New & Used, Singles and Doubles. Use your Land, Cash, or combination of both for Down Payment. Special Financing for ALL Types of Credit! Habla Espanol! 866-858-6862

### Sponsored by

The Goodland Star-News

1205 Main  
Goodland, Kan. 67735  
899-2338

7	4	9	5	6	3	8	2	1
6	3	1	2	7	8	9	4	5
8	5	2	9	1	4	6	7	3
3	1	8	6	9	7	4	5	2
4	9	6	3	5	2	7	1	8
5	2	7	8	4	1	3	9	6
2	6	5	4	3	9	1	8	7
1	8	4	7	2	6	5	3	9
9	7	3	1	8	5	2	6	4

### Sponsored by

The Goodland Star-News

1205 Main  
Goodland, Kan. 67735  
899-2338



## Crossword Puzzle

1	2	3	4	5	6	7	8	9	10	11	12	13	
14				15				16					
17				18				19					
20				21				22					
23								24					
25	26	27				28	29			30	31	32	
33						34				35			
36				37		38			39	40			
41				42	43					44			
45			46					47	48				
49								50					
51	52					53	54				55	56	57
58						59				60			
61						62				63			
64						65				66			

### CLUES ACROSS

- Baby or infant
- Common Indian weaverbird
- Walk
- Shiite spiritual leader's title
- Mirish
- Nostrils
- Confiscate
- Powder mineral
- Moss, lace or banded stone
- Doyle detective
- New Rochelle college
- "Case of the Ex" singer
- Rays or devilfish
- Cutting implements for sewing
- Two-toed sloth
- Lightly fry
- Japanese apricot
- Gargle
- Consumed food
- Swats
- Doctors' group
- Baseball teams
- Japanese waist pouch
- Impaired by diminution
- A fixed portion of food
- Gall
- A block of soap or wax
- Polite phrase for "What?"
- Blackberry drupelets
- Wild sheep of Northern Africa
- River in Florence
- Carried
- Was visualized
- Giant armadillo
- Dwarf buffaloes
- An account of events
- Avery dark black

### CLUES DOWN

- Morsels
- Indian wet nurse
- Cook a cake
- Retired with honorary title
- Conductor's instrument
- Manila hemp
- Yellow portion of an egg
- Curved support structure
- Reasonings
- Molten rocks
- Hillside (Scot.)
- Leases
- Point midway between E and SE
- Mauna \_\_, HI, volcano
- Leave out
- Wall painting
- Colorful Japanese animation
- Grandmothers
- Fully satisfied
- Billiards sticks
- A citizen of Oman
- Duplicate or copy
- Municipality in Philippines
- Mentally healthy
- Capacities for work or activity
- Able to read and write
- Dark bluish black
- Loudenville college
- Seizure of property by force
- Alias
- Showing no mercy or pity
- Sacred picture
- Hungarian pen inventor
- Hops kiln
- Carbamide
- Dull in color
- Upon
- Person, place or thing word
- Sleeveless Arab garment

### The crossword puzzle brought to you by:

The Goodland Star-News

1205 Main, Goodland, Kan. 67735  
(785) 899-2338

## FUN BY THE NUMBERS

		7		6				4
3			4		7	1	6	
4	1	6			8		3	7
7				1		4		
	9		3		4			
	3					9		1
5	4							
			2		1		7	5
6					9			

Level: Beginner

Like puzzles? Then you'll love sudoku. This mind-bending puzzle will have you hooked from the moment you square off, so sharpen your pencil and put your sudoku savvy to the test!

### Here's How It Works:

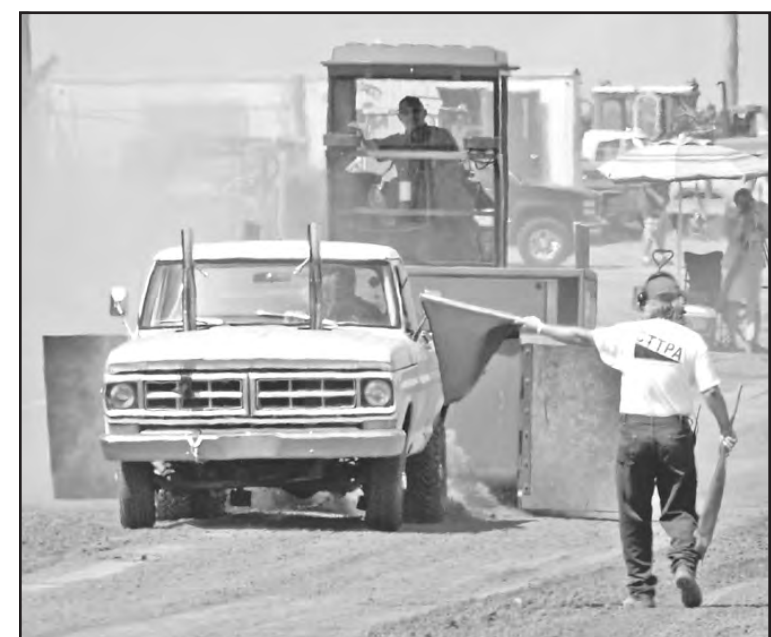
Sudoku puzzles are formatted as a 9x9 grid, broken down into nine 3x3 boxes. To solve a sudoku, the numbers 1 through 9 must fill each row, column and box. Each number can appear only once in each row, column and box. You can figure out the order in which the numbers will appear by using the numeric clues already provided in the boxes. The more numbers you name, the easier it gets to solve the puzzle!



## Tractors, trucks kick up dust at the fair

The roar of engines and plumes of dust accompanied the contestants at the Modified Tractor Pull on Sunday at the Northwest Kansas District Free Fair. The Colorado Truck and Tractor Pullers Association put on the show each year, which sees modified tractors and trucks vying to see how far they can pull the rig. The contest comes down to fractions of an inch – measured by a sometimes temperamental laser system.

Photos by Kevin Bottrell/The Goodland Star-News



## matters of record

### DEEDS

The following real estate transactions have been reported by the Sherman County register of deeds.

Eklund Insurance, LLC to Jack E. Eklund and Marilyn K. Eklund, cotrustees of the Jack E. Eklund Revocable Trust dated 4/30/2001, Lots 15 and 16, Block 18, CK&N Addition to City of Goodland.

Ty T. Gerlits conveys and warrants to Brent James Flanders and Diana L. Flanders, a tract of land in SE/4 of Sec. 22, T8S, R38W.

Lynn L. Busse and Daniel P. Busse convey and warrant to Lynn L. Busse and Daniel P. Busse, Trustees of the Lynn L. Busse Revocable Trust UTA 5/3/2013, an undivided 1/2 interest in the SE/4 of

Sec. 10, T6S, R38W.

Daniel P. Busse and Lynn L. Busse convey and warrant to Daniel P. Busse and Lynn L. Busse Trustees of the Daniel P. Busse Revocable Trust UTA 5/3/2013, an undivided 1/2 interest in the SE/4 of Sec. 10, T6S, R38W.

Daniel P. Busse conveys and warrants to Daniel P. Busse and Lynn L. Busse, the SE/4 of Sec. 14, T6S, R38W.

Steven B. Paul; Lori A. Titus; Mark A. Paul and Carrie Paul; Shelly VanCamp and Kurt VanCamp, all quit claim to Paul Clan, LLC, the NE/4; N/2 of SW/4 and NE/4 of SE/4, all in Sec. 14, T10S, R41W; AND the S/2 of SW/4 of Sec. 14, T10S, R41W.

## Partnering To Bring Medical Specialists To Goodland

### Goodland Outreach Clinic Schedule

#### Goodland Regional Medical Center

220 W. Second Street - Goodland

#### Urology

**Dr. Kevin McDonald**  
Monthly

**Dr. Wallace Curry**  
Monthly

**NE CALL**  
1-855-HAYSMED

In partnership with Goodland Regional Medical Center  
haysmed.com



Vote for your favorite businesses and employees! Help your favorites become this year's winners. You can vote by filling out the nomination form found in the Goodland Star-News, or by stopping in our office for a ballot to fill out.

Simply mark your choices and return the ballot to The Goodland Star-News.  
**BALLOTS NEED TO BE RETURNED BY AUGUST 7 BY 5 PM MT.**

- | Best of People                  | Best of Food and Beverage                        | Best of Goods and Services         |
|---------------------------------|--------------------------------------------------|------------------------------------|
| Best Financial planner _____    | Best Pizza _____                                 | Best daycare provider _____        |
| Best cars sales person _____    | Best Burger _____                                | Best automotive repair _____       |
| Best employer _____             | Best Chicken _____                               | Best auto body shop _____          |
| Best coach _____                | Best Breakfast _____                             | Best Gas/convenience store _____   |
| Best Physical Therapist _____   | Best Steak _____                                 | Best new car dealer _____          |
| Best Massage Therapist _____    | Best coffee _____                                | Best used car dealer _____         |
| Best City employee _____        | Best Mexican food _____                          | Best auto parts _____              |
| Best County employee _____      | Most Romantic Restaurant _____                   | Best home health care _____        |
| Best Pastor _____               | Best Chinese food _____                          | Best auto glass _____              |
| Best mechanic _____             | Best restaurant to take out of town guests _____ | Best tire center _____             |
| Best principal _____            | Best desserts _____                              | Best nursing home _____            |
| Best Chiropractor _____         | Best sandwich _____                              | Best assisted living _____         |
| Best Investment Broker _____    | Best place to get ice cream _____                | Best computer store _____          |
| Best Attorney _____             | Best liquor store _____                          | Best beauty salon _____            |
| Best Secretary _____            | Best drive thru _____                            | Best nail salon _____              |
| Best School Teacher _____       |                                                  | Best cell phone carrier _____      |
| Best Physician _____            |                                                  | Best butcher _____                 |
| Best Ag Equipment _____         |                                                  | Best photographer _____            |
| Best Electrician _____          |                                                  | Best tanning beds _____            |
| Best Bartender _____            |                                                  | Best florist _____                 |
| Best Waiter/Waitress (one each) |                                                  | Best carpet cleaning _____         |
| Waiter _____                    |                                                  | Best tag supply store _____        |
| Employed at: _____              |                                                  | Best gift shop/collectables _____  |
| Waitress _____                  |                                                  | Best bank _____                    |
| Employed at: _____              |                                                  | Best pharmacy/drugstore _____      |
| Best postal carrier _____       |                                                  | Best bar _____                     |
| Best Dentist _____              |                                                  | Best lumber yard _____             |
| Best Real Estate Broker _____   |                                                  | Best heating & cooling _____       |
| Best Insurance Agent _____      |                                                  | Best eye-ware _____                |
| Best Pharmacist _____           |                                                  | Best internet/cable provider _____ |
| Best Auctioneer _____           |                                                  | Best motel/hotel _____             |
| Best Radio Personality _____    |                                                  | Best hardware store _____          |
| Best College Professor _____    |                                                  | Best furniture store _____         |
| Best Nurse _____                |                                                  | Best appliance store _____         |
| Best Veterinarian _____         |                                                  | Best towing service _____          |
| Best Public Official _____      |                                                  |                                    |
| Best Sheriff's Deputy _____     |                                                  |                                    |
| Best local artist _____         |                                                  |                                    |
| Best police officer _____       |                                                  |                                    |
| Best firefighter _____          |                                                  |                                    |
| Best plumber _____              |                                                  |                                    |

Contest rules: Must be 18 or older to participate. Only one answer per "Best of." Try to fill out survey completely. Name and phone number must be included (box to the right). One ballot per person.

Return ballots to our office or by mail.  
**The Goodland Star-News**  
1205 Main, Goodland, KS 67735

NAME: \_\_\_\_\_  
Contact number: \_\_\_\_\_