



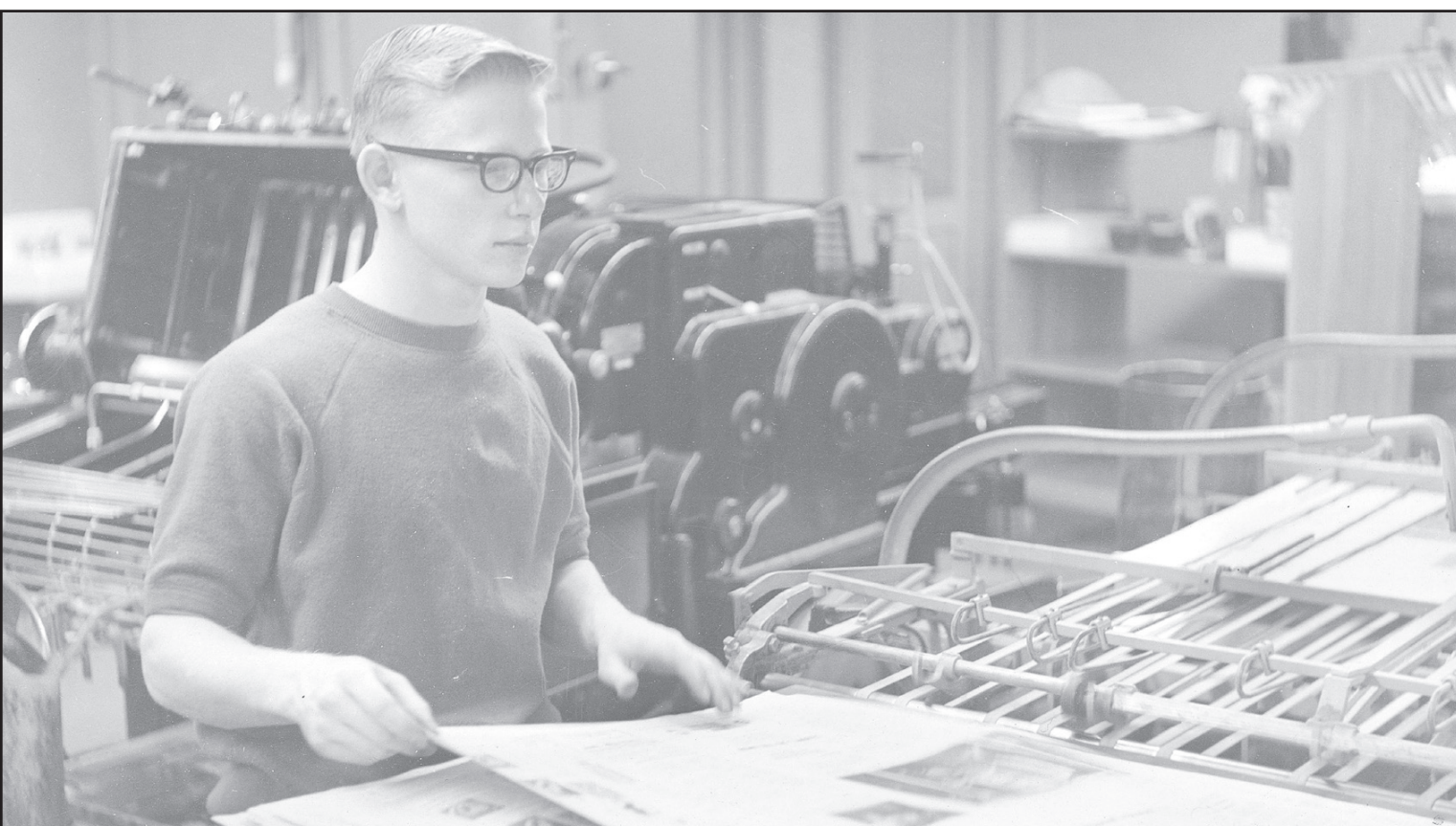
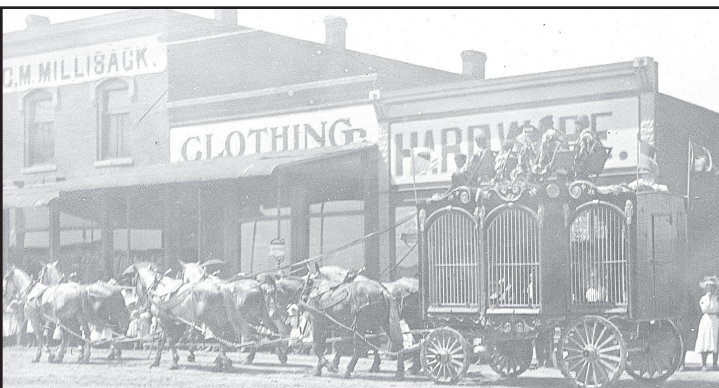
The High Plains Museum

## Goodland through the years

Goodland has changed a lot through the years. The 1200 block of Main Street used

to house this Ford garage (above), as well as clothing and hardware stores (below).

Goodland High School used to be housed in this building (right) instead of where it is now on Cherry Avenue. The county has seen many different newspapers come and go (bottom), including, but not limited to, the *Goodland Daily News*, the *Sherman County Star*, the *Sherman County Herald*, the *Goodland Republic* and most recently, the *Goodland Star-News*.



## Asbestos Shingles...

are now available

SHINGLES have been a scarce commodity for many months but we are now able to supply you with Asbestos Shingles at a moderate cost. They are easily laid and are meeting with popular favor wherever used. They may be utilized for a number of building purposes if properly planned.

We shall be please to figure with you on your requirements.

### Foster Lumber Co.

PAUL C. RASURE, manager

## CLEARANCE Of Dresses....

all good styles, most sizes from 9 to 48-- junior and stouts



Dresses that sold from 6.50 to 12.95

NOW GO at--

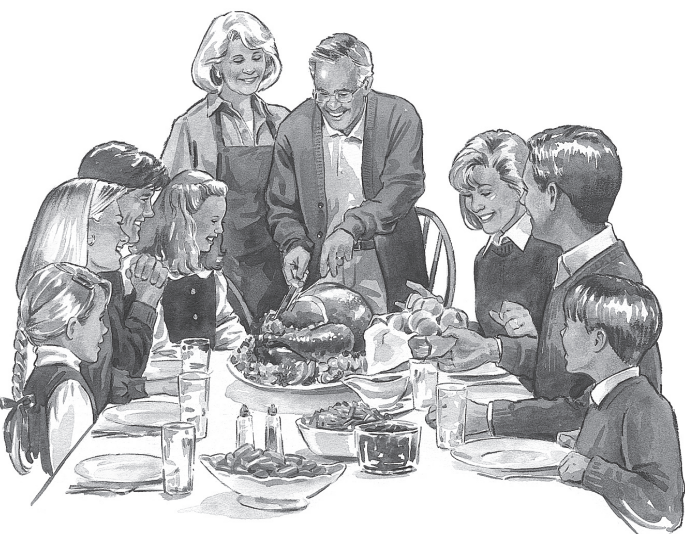
**\$3.95 to \$12.95**



Buy one or more for wear now or later.

# WOLFF'S

### — PAUSE TO GIVE THANKS —



### — then Look to the Brighter Days

For what America has done in this war, everyone should be deeply thankful. The days are bright with the wartime deeds of all America; its fighting forces and its working forces, man and women. Still brighter days are ahead, but we must not rest.

Let's pause only for a moment, this Thanksgiving. There is much to be done. Everyone must dig deeper and deeper for War Bonds. Our fighting men are carrying on, so our war workers must keep production humming. And the railroads must continue their vital transportation job as the war moves into its final chapter in the Pacific.

ROCK ISLAND LINES, a western railroad, is of ever increasing importance as America turns its eyes and its supreme effort toward the setting sun. Our 24,000 employees know this. They will see America through to the dropping of the last bomb, to that day of complete and total thanksgiving.

As yesterday — and today — so tomorrow ROCK ISLAND'S sole purpose is to provide the finest in transportation.



## ROCK ISLAND LINES

ONE OF AMERICA'S RAILROADS- ALL UNITED FOR VICTORY

### HELPFUL POINTERS ON YOUR MEAT POINTS...



SHARE THE MEAT  
 BUY LOW POINT CUTS  
 MAKE THE MOST OF YOUR MEAT

COME HERE FOR QUALITY LOW POINT MEATS AND FOR YOUR WEEKLY PRIME STEAK OR ROAST!

- DELICIOUS APPLES
- Extra Fancy Delicious.....12¢ lb.
- PRIDE OF THE ROCKIES FLOUR
- Fifty pounds for.....\$2.10
- PEANUTS
- pound......25¢
- CRACKERS
- Two pounds for......25¢
- WHEATIES
- Two packages for......20¢
- GRAPENUTS
- Two packages for......25¢
- TOMATOES
- No. Two can......10¢
- PEAS
- No. Two can......10¢
- POPCORN
- Large Yellow, pound......15¢

White House Grocery and Market