



High Plains Museum Intern Sami Philbrick showed the display of telephones and lobby furniture from the telephone building. The

exhibit starts Friday and ends Monday, July 30. Photo by Pat Schiefen/The Goodland Star-News

Museum shows hidden treasures

What is the connection between an airplane prop, old telephones and coffee grinders? The connection is that they were owned and used by someone from Goodland.

"Goodland Treasures" is the latest interactive exhibit the High Plains Museum will have on display starting today. The exhibit will explore Sherman County history through objects hidden from public view in the museum's collections.

The airplane prop is one from the time when Renner Field was used for the training of glider pilots by the military. There is an old baseball uniform and trophies from the time when Goodland had a semi-professional baseball team in the 1940s.

A school exhibit has a map showing the land acquisitions that make

up the current U.S. Desks and objects connected with schools are with the map. The row of old coffee grinders will allow people to grind coffee beans.

There are chairs from the lobby of the old telephone building decorated in a Native American influence. Telephones ranging from crank to an old bag cell phone are shown.

Currently the museum has an intern, Sami Philbrick, who is also a Goodland High School graduate finishing her masters degree in museum science. She will be at the museum until July.

The "Goodland Treasures" will last until Monday, July 30. The museum is open from 9 a.m. to 5 p.m. Monday and Wednesday through Saturday. For information call 890-4595.

Convention and visitors bureau will be at Sampler Fest

The Sherman County Convention and Visitors Bureau will have a table at the upcoming Sampler Festival on Saturday and Sunday, May 5 and 6, at Liberal's Light Park.

We will be in the Northwest Kansas tent where there will be activities both days for people and kids as well as information about the region, said Donna Price of the bureau. They will pop popcorn, have a bean bag toss and have a box with

sunflowers and goodies for kids to dig around in.

Almost a fifth of the communities in the state will have travel booths. Two Kansas products tents will be filled with Kansas entrepreneurs. Three stages will feature Kansas musicians and historic performers. The food booths will feature Kansas specialty or ethnic foods.

The event is a project of the Kansas Sampler Foundation whose

mission is to preserve and sustain rural culture and is the 23rd festival. Festival overseer WenDee LaPlant says, "We think that more people will explore the state if we can help them know about all the fun and interesting things to see and do in the state. The communities are so excited to share what they offer and audiences have always been so eager to find places that meet their tastes and budget."

The festival began on the Penner Farm near Inman in 1990 as a book signing party for Mil Penner and daughter Marci Penner's first "Kansas Weekend Guide." It remained on the farm for eight years and then started to rotate around the state every two years. The event has also been held in Pratt, Ottawa, Independence, Newton, Garden City, Concordia and Leavenworth.

LaPlant continued, "We're

pleased as can be to bring the festival to Liberal and southwest Kansas. Convention and Visitors Bureau director Sally Fuller and her staff and the entire city have bent over backwards to make sure this is yet another excellent promotion of the Kansas story."

Some of the attractions in or near Liberal, home to the International Pancake Day Race, include the Mid-America Air Museum, Doro-

thy's House and the Land of Oz, Baker Arts Center, Seward County Historical Museum and the Mighty Samson of the Cimarron bridge.

The festival is from 9 a.m. to 4 p.m. (Mountain Time) on Saturday, May 5 and 9 a.m. to 3 p.m. on Sunday, May 6. For more information call (620) 626-0170 or go to www.kansassamplerfestival.com.

Cattle feeders college to be in Oakley in May

Kansas State Research and Extension will host Cattle Feeders College on Thursday, May 3, at the Logan County Fairgrounds in Oakley. Registration will begin at 3:30 p.m. (Mountain Time), and will be followed by dinner.

This program has been designed to help producers and those involved in every facet of the feeder cattle industry. This workshop will include the following break-out sessions: Managers and Human Resource session, Cattle Crew session and Mill and Maintenance Crew session.

This program will also include the presentation of "Top Hand"

Cattle Feeding Industry Employee Awards, for those individuals who symbolize the values of hard work, honesty, reliability, integrity and animal stewardship that the Kansas Cattle Feeding Industry was built on. To nominate these individuals, please submit nominations by Friday, April 27, via e-mail to Dr. Justin Waggoner, Kansas State Extension Beef Systems Specialist, at jwaggon@ksu.edu.

There is no cost to attend, but pre-registration is required by Friday, April 27, if you plan to attend by calling the Oakley Office at (785) 671-3245.

Instrumental, vocal students to perform

Goodland High School's junior and senior students who performed at regional and state music contests will present their instrumental and vocal solos at 7:30 p.m. on Sunday, May 6, at the First Christian Church, 711 Arcade.

The performance is part of the observance of National Music Week by the Goodland Federated Music Club. National Music Week is observed each year during the first week in May, Sunday through Sunday. This is the 89th year for the observance which was begun by Charles Tremaine in 1924.

This year's theme "Music... Sounds that Inspire" encourages us to explore the far-reaching effects of music in our lives and to discover the added dimensions it can bring to the world today.

Music has been important throughout history. It exerts a strong influence on our everyday lives and has become a powerful means to deepen our worship, express patriotic fervor, or to add a joyous atmosphere to happy occasions.

Anyone can attend and refreshments will be served.

Where to donate to help disaster areas

The Kansas Division of Emergency Management advises people who want to donate to the relief effort for those affected by the massive storm system that hit the state Saturday to call the United Way's 211 number.

"It seems that as soon as a disaster hits, the calls start coming in from people asking how they can help," said Angee Morgan, deputy director of the division. "Calling 211 is

one of the best and fastest ways to do that."

Calling 211 from any phone will allow people to donate money, goods, service or volunteer to help. Contributions can also be made by going online to give.liveunited.org/page/contribute/contribution1 or at www.ksready.gov and clicking on the "Donate to Kansas disaster relief" link.

Field representative wins award for work

Darin Reed a field agent with The Knights of Columbus Western Kansas Agency finished the first quarter of 2012 ranked No. 1 out of 1,287 Knights of Columbus field agents throughout America and Canada.

His ranking is based on the amount of business he has already completed this year.

Reed also finished ranked No. 1 for April 1 as well. The last time an

agent in Western Kansas was ranked No. 1 was in 1997. Reed is the first since then and the only agent out of Western Kansas to ever hold this honor for two months.

Reed is a Marine Corps veteran and the field agent for Ellis, Grainfield, Hoxie, Angelus/Grinell, Oakley, Colby and Goodland. He has been with the Order since 2005.

Trailer hitch company located in Humbolt

By Ron Wilson

Director

Huck Boyd National Institute for Rural Development at Kansas State University

"Do you know where your trailer hitch was made? Should you care?" Those leading questions were found in an ad in a national magazine. The ad described the importance of using American-made products, such as the ones built by this particular company which is located in rural Kansas.

Joe Works is owner and co-founder of B&W Trailer Hitches in Humboldt. Joe grew up on a farm near Humboldt in southeast Kansas and returned to the farm after attending Kansas State.

When the farm economy took a downturn in the 1980s, he did some welding at night to supplement the farm income. While at the welding shop, Joe met a guy named Roger Baker. During their breaks, Joe and Roger started talking about trucks and drawing out truck bed designs on a napkin. Roger built a prototype for this new design in his garage, and ultimately the two men went into business together. Using the initials for Baker and Works, the company was named B&W Truck Beds.

Their goal was to build the highest quality truck bed on the market. The business grew and diversified. Then Joe and Roger thought about how

to improve the gooseneck trailer hitches then in use.

At that time, the best option for getting the gooseneck ball out of the way in a truck bed was a large plate with a ball that folded down. This option required a huge hole in the truck bed, and installation was cumbersome.

Together, Joe and Roger designed a hitch with a ball that could be pulled out, turned over, and stowed beneath the bed. They designed a framework which is bolted to the truck frame and requires no welding, drilling or bed removal to install. This new hitch, called the Turnover Ball, revolutionized the gooseneck hitch industry. This type of ball storage and mounting system is used by nearly every gooseneck hitch manufacturer today.

The company is now known as B&W Trailer Hitches. Joe's daughter, Beth Barlow, is marketing director for the company.

Today, the company employs some 220 people. Employees come from nearby towns like Chanute and Iola, and also rural communities like Piqua, Gas, and Bronson, population 346 people. Now, that's rural.

In 2002, Roger Baker retired from the company and sold his shares to Joe. In 2009, the company began an Employee Stock Ownership Plan under which employees buy into ownership of the company's stock.

"This helps the employees function as owners when they make their decisions," Beth Barlow said.

Today, B&W Trailer Hitches offers an extensive line of products relating to trucks and livestock. These include gooseneck and recreational vehicle hitches, receiver hitches and accessories, truck cab protectors, gooseneck couplers, truck beds, farm and ranch equipment and all terrain vehicle accessories.

Where are these products sold? The answer is, coast to coast -- literally from California to the Carolinas. B&W Trailer Hitches has a network of more than 6,000 dealers across the U.S. and in Canada.

Yet the competition is steep, particularly from low-cost overseas manufacturers.

"So many companies have taken their manufacturing overseas," Beth Barlow said. "It's investing in the latest technology that makes us efficient and able to compete with foreign competition."

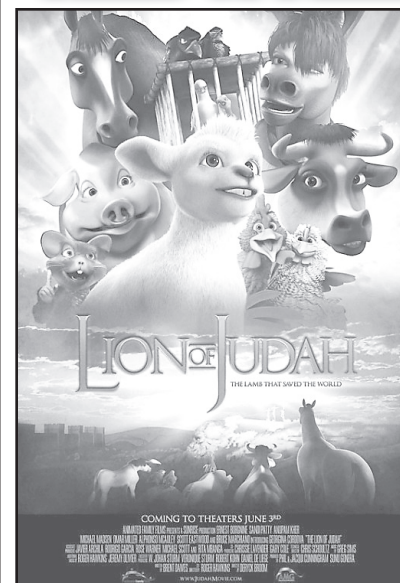
The company's website is www.

turnoverball.com. It says: "Made in the USA" can succeed, but only if we rely on the principles that work in our own neighborhoods. We grow by earning trust and improving customer value, not by cutting costs. We let people use cutting-edge technology to make things safer, easier, and higher quality, rather than let technology use us. We respond to customers and changing markets by being right-sized and flexible, not just bigger. We treat each other as family, not as 'labor' exportable to the lowest bidder."

"Do you know where your trailer hitch was made? Should you care?" It's obvious that the people of B&W Trailer Hitches care about making a difference with homegrown manufacturing.

And there's more. When B&W Trailer Hitches suffered from the economic downturn, the company considered laying off employees - but instead it chose a different course. We'll learn about that next week.

Films of Faith Film Series



Lion of Judah (Animated (PG), 2011)

Sunday, April 22 1:30 p.m. MT Sherman Theatre FREE ADMISSION!

There will be a discussion opportunity following the movie.

Sponsored by Emmanuel Lutheran Church and all the brothers and sisters in Christ of Goodland.

corrections

The Goodland Star-News will correct any mistake or misunderstanding in a news story.

Please call our office at (785) 899-2338 to report errors.

We believe that news should be fair and factual.

We want to keep an accurate record and appreciate you calling to our attention any failure to live up to this standard.

Visit our Facebook page at Goodland Star-News

RICHARDSON'S HOMESTEAD REALTY AND AUCTION

Absolute Land Auction of 380 acres Sherman County farmland

Seller: Robert Rhoads

Tuesday May 1st, 2012, 10 AM MDT

Elks Lodge, 1523 Arcade, Goodland, KS.

Selling in individual tracts only.

Tract 1 SE ¼ 13-7-40
Tract 2 South 101 acres in SE ¼ 21-7-39
Tract 3 West ½ & SE ¼ of the NE ¼ 2-8-40

Minerals believed to be intact and going to the buyers. Immediate possession of tracts 1 & 2. Producing gas well on tract 2. For more information contact Terry Richardson, Homestead Realty 785-899-8094 899-2328 office

Complete sale bill on www.goodlandhomestead.com

RICHARDSON'S HOMESTEAD REALTY AND AUCTION

1023 MAIN - GOODLAND, KS - 67735

TERRY RICHARDSON
OWNER/BROKER/AUCTIONEER

auctions@goodlandhomestead.com
785-899-2328 or 800-974-2426
www.goodlandhomestead.com

Household Hazardous Waste Collection

SHERMAN COUNTY RESIDENTS ONLY!!

Saturday, April 21, 2012

7-11 a.m. MT at HHW Facility

(17th & Broadway, west side of building)

Goodland, KS

For more information, please contact Kenny Griffith at (785) 821-1024. No early drop-offs or no drop-offs without personnel present. There will be no USED OIL collected at this time.