

weather
report

46°

10:30 a.m.
Thursday



Today

• Sunset, 4:33 p.m.

Saturday

• Sunrise, 7:07 a.m.
• Sunset, 4:34 p.m.

Midday Conditions

- Soil temperature 33 degrees
- Humidity 45 percent
- Sky cloudy
- Winds south 5 mph
- Barometer 29.82 inches and steady
- Record High today 71° (1921)
- Record Low today -13° (1990)

Last 24 Hours*

High Wednesday 56°
Low Wednesday 24°
Precipitation none
This month 0.41
Year to date 19.33
Below normal 0.29 inches

The Topside Forecast

Today: Sunny with a high near 55, winds out of the west at 10 to 15 mph and a low around 22.
Saturday: Sunny with a high near 53, winds out of the west at 10 to 45 mph and a low around 22.

Extended Forecast

Sunday: Mostly clear with a high near 40 and a low around 19.
Monday: Sunny with a high near 41 and a low around 25.
Tuesday: Sunny with a high near 52 and a low around 28.

(National Weather Service)

Get 24-hour weather info. at 162.400 MHz.



local
markets

10:30 a.m.

Wheat — \$6.52 bushel
Posted county price — \$6.32
Corn — \$6.22 bushel
Posted county price — \$6.03
Milo — \$5.91 bushel
Soybeans — \$10.64 bushel
Posted county price — \$11.15
Millet — \$11.50 hundredweight
Sunflowers
Oil current crop — \$28.40 cwt.
Confection — no bid
Pinto beans — \$28
(Markets by Scoular Grain, Sun Opta, Frontier Ag and 21st Century Bean. These may not be closing figures.)

inside
today

More local
news, views
from your
Goodland
Star-News



Area sports

action returns

Cowboy Ryan Hillmer reached for a rebound against Norton in Cowboy action at Topside Tip-Off. Sports action begins on Tuesday with the Cowboys and Cowgirls in Colby. See photo, story on Page 9.



New exhibits come to museum

By Pat Schiefen

pjschiefen@nwkansas.com

Kids as well as their parents will enjoy the new traveling exhibits that opened Wednesday at the High Plains Museum, 1717 Cherry. They are: “Considering the Commonplace: Prairie Towns Through the Lens of Bob Regier” and “K is for Kansas.”

David Kreider and Ben Kreider from the Kauffman Museum, of North Newton brought the two exhibits in a rental truck and arrived last Monday evening and spent Tuesday assembling the two exhibits.

The K is for Kansas is a fun exhibit with lots of facts about Kansas. The exhibit features large children’s alphabet blocks with facts on the side of blocks and fun things to start, push and manipulate. There is a block with a stuffed Prairie Chicken in it and when a button is pushed the call of the bird is heard.

Assembler David Kreider said the group who came up with the facts about Kansas and the people of Kansas on the alphabet blocks spent a lot of time coming up with the various facts. He said it took about six months to complete the exhibit. For example on the letter N the facts include James Naismith, narrow-leaved milkweed, Carry Nation, natural gas, Nicodemus, nine-banded armadillo and Niobrara chalk.

Naismith (1861-1939) invented the game of basketball in 1891 for young men. He was the first basketball coach at the University of Kansas as well as the only KU basketball coach with a losing record. There is a small game with this letter that allows one to shoot a wooden ball at a basket.

Nation (1846-1911) was a temperance leader who smashed saloons in Kansas trying to disrupt the illegal sale of liquor, causing \$2,000 worth of damage at one saloon.

In 1876 Nicodemus was settled by freed slaves led by Benjamin “Pap” Singleton, a Topeka carpenter and coffin maker originally from Tennessee.

Natural gas refers to the 100 billion cubic feet of the resource mined each year from the Hugoton field lying beneath southwest Kansas and spreads into Oklahoma and Texas.

Niobrara chalk forms the bluffs in Gove and Logan Counties which contains fossils of giant lizards and sea reptiles that lived in the inland ocean that covered Kansas up to 80 million years ago.

Also in this exhibit is carpet shaped like the state of Kansas and has the major rivers



David Kreider showed how the alphabet blocks were stacked in the “K for Kansas” exhibit. Pictured is a Vornado Fan. The block show interesting facts from A to Z about Kansas and its

people. The blocks have interactive features which include the fan running and a basketball game.

Photos by Pat Schiefen/The Goodland Star-News

Painted on it. There are wooden tags that kids get to place on the carpet to show the location of towns, rivers and other geological features of Kansas.

Hint the carpet is marked like the map given out by the state for people to be able to find where they are going.

The second exhibit from the Kauffman Museum Considering the Commonplace: Prairie Towns Through the Lens of Bob Regier is freestanding. Regier of North Newton spends three days annually exploring a quadrant of

the state taking pictures. His photos show an affection for small towns on the Kansas prairie.

The exhibit is organized around eight themes of elegance, entrances, light and shadow, locomotion, sacred space, sentinels, signs and lines, windows and walls. There are pictures of interesting staircases, entrances and shapes of buildings.

The banners were made by ink jet printers of the photos on special fabric, said David Kreider.

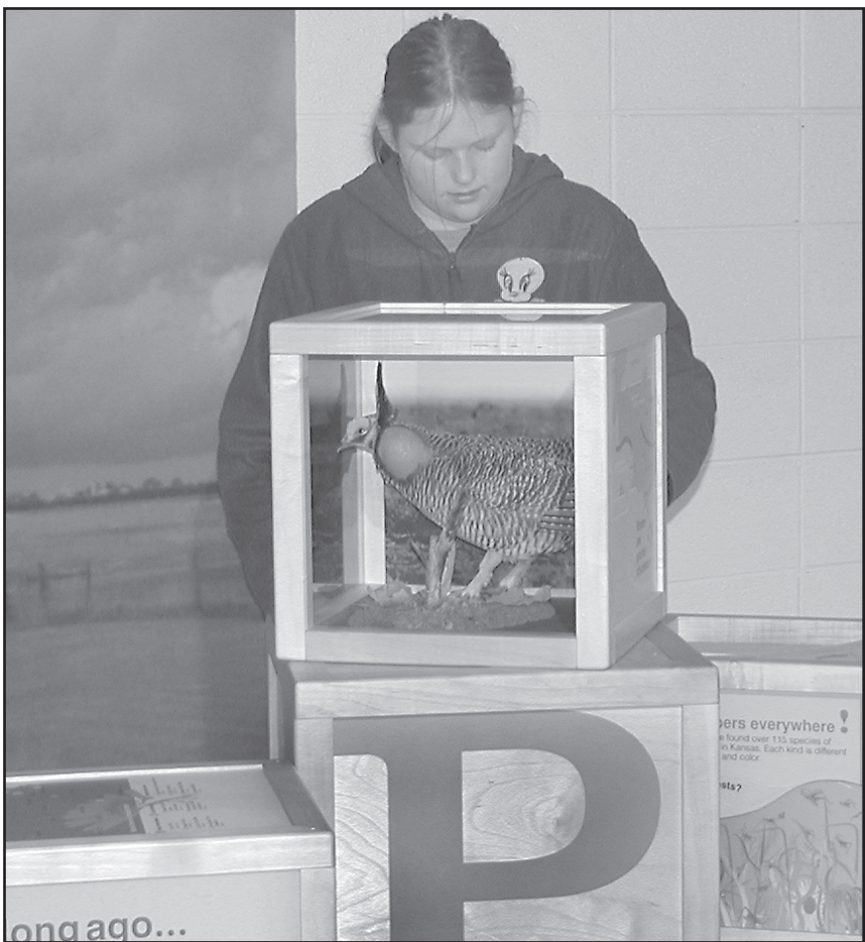
The exhibits will run through March. It cost \$6,500 to bring the exhibit to the museum, said High Plains Museum Director Karen Anderson. The money came from the City of Goodland, the High Plains Museum Endowment, Mann’s Jewelry and Gifts/Smitty’s Sports, Garcia’s Home Furnishings and Appliance and Olde Westport Spice.

A grand opening is being planned for Saturday, Jan. 14.

For information or to schedule a tour call (785) 890-4595.



David Kreider (left) and Ben Kreider (right) of the Kauffman Museum assembled the two exhibits currently on display at the High Plains Museum. They were working on “Considering the Commonplace: Prairie Towns Through the Lens of Bob Regier.” The exhibit has photographs of architectural elegance that artist Bob Regier found one of his explorations of the various small towns on the Kansas prairie.



Savannah Solomon tried out the button that produced the call of the Prairie Chicken in the “K for Kansas” exhibit currently at the High Plains Museum, 1717 Cherry. This traveling exhibit is on loan from the Kauffman Museum of North Newton.

Call to reserve space for facility meetings

The Goodland School District would love to have anyone interested in the future makeup of the district to attend one of its school facilities discussions at the Administration Building.

District officials said Wednesday they have had six calls from people signing up for one of the discussions, and hope more will call in the next week.

The district faces the challenges of too many buildings with uncertain funding levels. The Goodland School Board has

sought feedback from people since the bond election last spring and would like more before making future plans.

The choices are 7 a.m. Wednesday, Jan. 11; 11 a.m. Thursday, Jan. 12; 1 p.m. Monday, Jan. 23; 5 p.m. Wednesday, Jan. 25; 4 p.m. Tuesday, Jan. 31; 8 a.m. 8 a.m. on Monday, Feb. 6; and 7 p.m. Thursday, Feb. 9.

Each meeting will be limited to 30 people. To sign up for your choice of dates call the school district at (785) 890-8504.

Health Fair coming soon

The Sherman County Health Fair is planned for Saturday, Jan. 28, from 8 to 11:30 a.m. at the Northwest Kansas Technical College Student Union.

All blood draws will be done two weeks prior to the health fair from 7 to 9 a.m. each day of the week of Jan. 9 to 13, at the main entrance to the Goodland Regional Medical Center.

Costs for the blood profiles are: Chemistries, \$30; CBC only, \$10; A1c (Diabetes), \$15; PSA (Prostate), \$15; and TSH (Thyroid), \$15.

Fasting for 12 to 14 hours is recommended to assure an accurate cholesterol screening included in the blood chemistry profiles.

Offices closed Monday for New Year celebration

Federal, state, county, city, banks and the Post Office will be closed on Monday for New Years. The Sherman County Courthouse will close at noon today to close the books.

The Goodland Star-News office will be closed on Monday, but will be open on Tuesday. The mid-week newspaper will be a day late being delivered on Wednesday.

The Sherman County transfer station will be closed Saturday, Sunday and Monday for New Years.

First National Bank, Bankwest of Kansas and People’s State Bank will be closed on Monday, but Western State Bank will be open on Monday. First National Banks is closing at 2 p.m. today.

With Christmas and New Year being on Sunday the government offices will take the Monday off for the holiday.

The City commission first meeting of the year will be 5 p.m. on Tuesday. The Sherman County commissioners first meeting of the year will be at 8 a.m. on Tuesday, Jan. 10.