

# Students can petition to play in two sports

By Pat Schiefen  
pschiefen@nwkansas.com

The Goodland School Board at its meeting Monday night decided, on a split vote, to allow students to participate in two sports in the same season on a trial basis for the next school year — as long as they keep their grades up.

Four members voted in favor, board President Chuck Wilkens, Dick Short, Jane Philbrick and Amy Sederstrom, and two against, LeAnn Friedrichs and John Hendrich. Andrew House was not at the meeting.

The board thought allowing students to participate in two sports might make some teams more competitive.

The track team has struggled since boys baseball started up in the same season, said Goodland High Activities Director Don Smith.

Under the rule, students must petition to be allowed to do the two sports.

In the fall, that means boys could be in football and cross country.

Girls could be in volleyball, golf, tennis, cross country or cheerleading.

In winter sports, it would be basketball and cheerleading for the girls, and basketball and wrestling for the boys.

In the spring, for the boys it would be baseball, track, tennis or golf, and for the girls, softball and track.

"We are looking at a small group that could do this," said Smith.

"The student must also maintain a 2.667 (B-) grade point average."

"It will not be easy to do," said Sederstrom.

"I don't like it," said Friedrichs.

Philbrick and Sederstrom wanted to make sure the board would be

able to review policy at the end of the year.

In the petition, the student must have the grade average and declare a primary and secondary sport.

A "D or F" on weekly grades will cause the student not to be able to compete in the secondary sport for the next week, Smith said.

Continued low grades would cause the student to be dropped from the roster of the secondary sport.

The student's parents, Smith or High School Principal Sharon Gregory can request the student to drop the secondary sport.

If the student decides to drop a secondary sport, the coaches of both sports and Smith must be notified.

The student can't quit his primary sport to become a full time member of the secondary sport except if both coaches, the student and Smith agree it is in the best interest of both sports.

When competition is scheduled for both sports, the student is expected to play in his primary sport.

A written request from the student and both coaches could allow the student to play in the secondary sport.

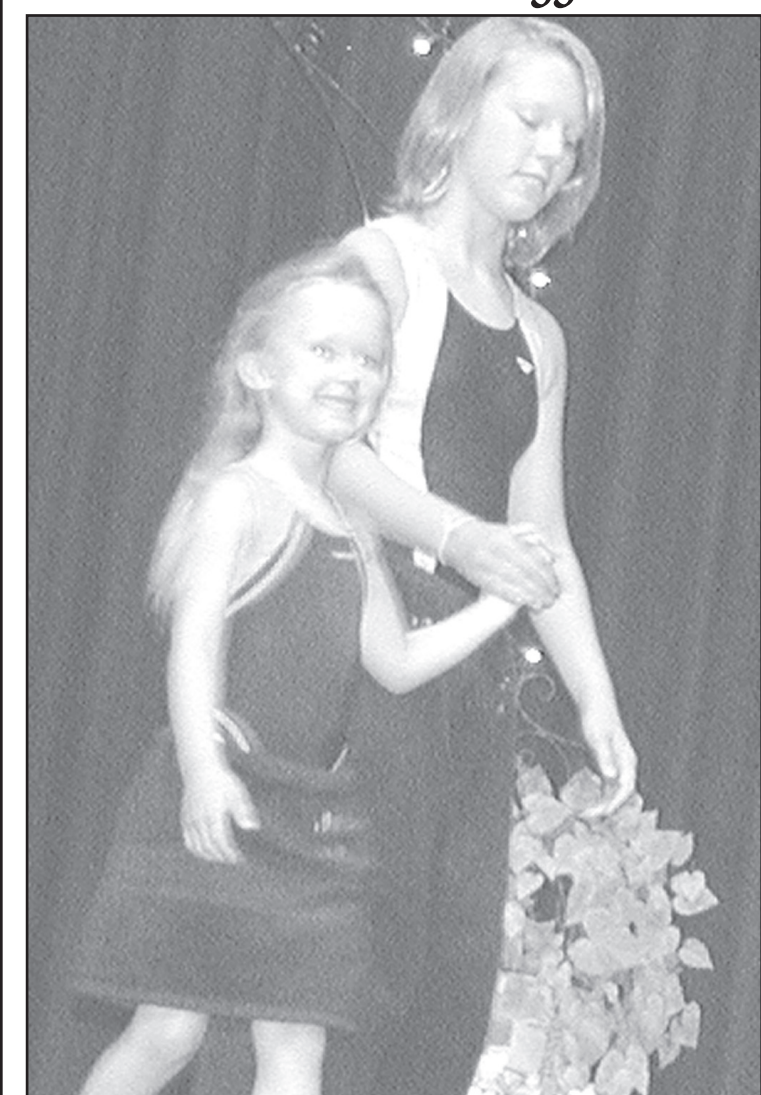
The level of competition will be considered.

On the application, the student must write out his reasons to play in two sports.

Also the parents must write out their reason they want their child to participate in two sports.

Smith said it will take a "special kid" to deal with the fact that he might not practice as much as a student who is only playing in one sport and may take the spot of someone who only goes out for the one.

## Strutin' their stuff



Brooke Lockhart (left) and her little sister Rebecca modeled swimsuit coverups Brooke made at the 4-H Style Revue on Thursday night at the Sherman Theatre downtown. Simon Bassett (right) showed off his purchased garments. He was accompanied by his basset hound Clementine, with flowers on her ears and a bow on her tail.

Photos by Pat Schiefen/The Goodland Star-News



## Sen. Brownback to visit counties

U.S. Sen. Sam Brownback will tour 10 western Kansas counties as part of his statewide tour, stopping in Sherman County next Wednesday to tour the Goodland Energy Center.

The stop here will be the last of the 10 Brownback will cover in two days, bringing him nearly full circle from his starting point. He will start in Cheyenne County, traveling to Rawlins, Decatur, Sheridan and Thomas next Tuesday. They next day, he'll start in Gove County and cover Logan, Wichita, Greeley and Wallace, ending up in Sherman County.

Brownback will start the tour at 9:30 a.m. (Mountain time) next Tuesday at the Main Street Coffee in St. Francis.

He will meet people at 11:30 p.m. in Atwood at Williams Brothers Supermarket.

At 1 p.m., he'll be at the Business Entrepreneurial Enhancement Center in Oberlin, and at 3 p.m. at

the Midwest Energy Community Room in Hoxie.

Brownback's last stop of the day will be at 6 p.m. at the Thomas County Chamber of Commerce in Colby.

Next Wednesday morning, the senator's first stop will be at 7 a.m. (Mountain Time) in Gove, then he'll stop off at a 13-county Area Energy Conference at the Colonial Steakhouse banquet room north of Oakley at 9 a.m.

Brownback will stop in Leoti at 10:30 a.m. at the Wichita County Business CARE Center, and at the Greeley County courthouse in Tribune at noon (Mountain time).

He will be at the Wallace County Senior Center at 1:30 p.m. in Sharon Springs.

His last stop is to be at 3 p.m. for a tour of the Goodland Energy Center.

All the stops are open to the public.

## Wreck injures driver, hits group of cattle

A teenage driver with three passengers encountered a group of cattle on a county road about 10:30 p.m. Friday night, hitting two and sending the driver to the hospital.

Trooper Josh McQuitty of the Kansas Highway Patrol said Shayla Matthews, 17, was southbound in a 1999 Dodge pickup on County Road 15 about four miles west and six miles north of Goodland.

Trooper McQuitty said the ac-

cident killed one of the cattle and injured the other. The driver was hurt when the air bag went off.

Matthews was taken to the Goodland hospital by ambulance, but released after treatment, a spokesman said.

The passengers, Reyna Andrew, 19; Spencer Windell, 18; and Anthony Garza, 36, all of Goodland, all were wearing seat belts, McQuitty reported. They were not injured.

## Council thinking about long-term funding

By Tom Betz  
ntbetz@nwkansas.com

Two county commissioners and four city commissioners joined the Sherman County Economic Development Council last Tuesday to talk about long-term funding for the economic development effort, naming a committee to draft a proposal to be presented at the next council meeting on Tuesday, Aug. 19.

The committee, to be chaired by Jerry Fairbanks, a council member from the First National Bank, includes council members Don Newell of S&T Communications, Walt Linthacum of L&W Andrist Insurance and Chuck Wilkens of Wilkens Truck and Tractor, County Commissioner Chuck Thomas, city Commissioner Josh Dechant and City Manager Wayne Hill.

The development budget is

\$100,000, \$50,000 each from the city and county, but with the basic expenses for the office and employees, this does not give the group much of a fund to provide incentives to potential businesses or to help retain existing ones.

Wilkens, council chairman, said he felt the effort to keep the J.C. Penney store open has given the three boards an issue to work on together, and he wants to continue that.

"I think there are a lot of good people in Goodland trying to do the right thing," he said. "Where are we headed?" I was asked earlier, and that brings up the question of where do we want to go and how do we get there?

"The whole basis of economic development is to retain what we have and recruit new businesses. I would like to see a longer-term com-

mitment from our community.

"We have been operating at times without an executive director, and that allowed us to build up the money to put in the Penney's program. That was not a lot of money, and ultimately it was not enough to change their decision.

"We appreciate the willingness of the city and county to fund this, but we are wondering if we can get a five-year to 10-year commitment.

"We need to be accountable, but ask the community to look at a 10-year deal to help positive things happen in our community."

Thomas asked if anyone knew what other counties are doing.

Council member Steve West of Western State Bank, said in Thomas County the city and county also give economic development \$50,000 each. He said the city has a sales

tax and gets one-quarter of 1 percent, which brings in \$250,000 to \$300,000 a year. They have about \$1 million in the bank and have been doing this for about four years, he said.

"It is set up through the city commission," he said, "and they have a template of requirements if you go in and apply for some of the money."

West agreed the Penney's effort opened the council's eyes.

"We need to have some money available," he said, "if we are going to compete. Adronics is here because we had a building available. We want to get results."

West said the council has been circulating ideas and will hold a public planning session on Thursday, Aug. 21, to set some goals and planning for the future.

## Long-term funding sources limited, few

By Tom Betz  
ntbetz@nwkansas.com

The city commission, county commission and Economic Development Council want to find a long-term money source for the joint economic development effort, but the options appeared limited at a meeting last Tuesday at Western State Bank.

The three boards talked about needing a steady budget and a bankroll to help attract and retain business, and appointed a committee to look at the choices.

Since the council was formed in 2003, the city and county each

have given it \$50,000 a year from general revenues. In the first year, the council received a gift from people that was used for a specific day care project, but otherwise, the city and county money makes up the budget.

The council feels that the money coming from the city and county will keep the office open, but the amount does not allow the group to have a reserve to react when a business expansion or recruitment opportunity comes up.

Someone asked about a state law allowing county commissioners to increase property taxes to pay for

economic development. County Clerk Janet Rumpel said she did not know much about it, but that it had been tried here more than 20 years ago and was defeated in a vote of the people.

Under state law, county commissioners can increase the property tax to pay for economic development programs or bonds. The increase would go into effect unless a pro-

test petition signed by 5 percent of registered voters was filed within 30 days to force a special election. Then it takes a majority vote to approve the tax.

City Commissioner Dave Daniels said the city had just finished with its budget, and commissioners had talked about a quarter-cent sales tax for development.

**Don't Miss a Good Thing!**

Farmers, Oilfield and Industrial Companies: get the lowest prices on new and rebuilt Vertical Holoshaft, Oilfield, Industrial, Lima 10-12hp Generators and Farm Duty Motors. I am a Baldor, Torquemaster and Winco Generator Dealer. I service what I sell. I also stock a wide variety of Ball Bearings.

Call Mel at: 785-625-5604 or Cell:785-650-7376

**Find An Acre of Happiness!**

In Manhattan, Kansas

- ◆1997 manufactured home
- ◆sits on 1.2 acres
- ◆4 bed, 2.5 bath
- ◆new well, septic in 2006
- ◆new appliances in 2005
- ◆2,016 square feet
- ◆large playset for kids
- ◆great place for animals

**A wonderful home for college students!**

Call Tom at (785) 443-0136

## matters of record

**District Traffic**  
The following fines have been paid in the Sherman County District Court. All ages are at the time of the ticket.

**June 2:** Lukasz, J. Zych, 25, Maspeth, N.Y., \$166 for violating motor carrier safety rules and regulations, not registering with United Carrier.

**June 3:** Lisa G. Meredith, 39,

Wray, Colo., \$183 for speeding, 88/65.

**June 4:** Oscar M. Hernandez, 49, Garden City, \$116 for violating motor carrier safety rules and regulations, brakes out of adjustment.

**Sherman**  
1203 Main - Phone 899-6103

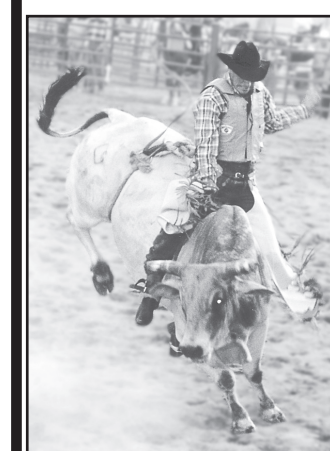
Tonight 7:00  
**The Incredible Hulk**  
ENDS THURSDAY!  
Nightly 7:00 • Sun. Matinee 1:30

## corrections

The Goodland Star-News will correct any mistake or misunderstanding in a news story. Please call our office at (785) 899-2338 to report errors. We believe that news should be fair and factual. We want to keep an accurate record and appreciate you calling to our attention any failure to live up to this standard.

## WESTERN PLAINS CHUTE OUT

Goodland, KS  
August 6th, 2008 at 6:30 PM  
Sherman County Fairgrounds



### TICKET INFORMATION

VIP seating-\$20.00  
Adult grandstand seating-\$15.00  
Youth grandstand seating-\$10.00

**BBQ starting at 4:30 for: MAJOR, PLATINUM and GOLD SPONSORS**

**PURCHASE YOUR TICKETS AT:**  
[www.nwksfair.com](http://www.nwksfair.com)  
Additional information contact: 785-899-5888

