



Monday afternoon, Gary Slough, regional manager of S&T Communications, used a snow blower to open his driveway. A figure next to his mailbox was buried neck deep in the snow, which measured about 17 inches.



Chuck Redlin (above), owner of GSL Enterprises, scooped snow at 216 E. Business U.S. 24 Sunday afternoon. The 17.7 inches of snow that fell over the weekend left a deep blanket over the town, and five-foot drifts around the trailer park. (At right) Snow drifted on the hood of a pickup at 323 E. 10th made it look like it had a horn

Photos by Sharon Corcoran and Pat Schiefen/The Goodland Star-News



Area digs out from year-end storm that closes roads

STORM, from Page 1

said they were hoping to find a sled to enjoy the snow. He said he asked his wife if she wanted to go along and said she would rather stay at home for a little peace and quiet.

Saturday, the Kansas Highway Patrol, Sherman County sheriff's deputies and city police began handing out tickets for those found on the closed roads.

In the city, drivers were ticketed if they did not have four-wheel drive or front-wheel drive with chains. With sunshine on Saturday and Sunday, many drivers thought the storm was over, but the blowing snow made travel treacherous and

tickets continued through Sunday.

The National Weather Service in Goodland recorded 16.9 inches of snow through Friday night, and another .8 on Saturday for a total of 17.7 inches. Winds whipped the snow into drifts from six to 10 feet deep, creating near-blizzard conditions. The wet snow brought 1.36 inches of moisture on Friday and .08 on Saturday for a total of 1.48 inches from the storm.

The total for December was 2.79 inches and the year end total was 24.81 inches. That is 5.06 inches ahead of the "normal" average rainfall of 19.75 inches and 8.73 inches ahead compared to 2005 (16.08 inches total).

While motels were mostly full, there was no need to open emergency shelters in Goodland. The state Department of Transportation kept closing I-70 farther and farther east at rooms filled, eventually stopping long-haul traffic at Salina.

In Goodland, police and emergency people were busy responding to calls to rescue people and dig vehicles out of drifts. The sheriff's new six-wheel-drive emergency truck was used to haul supplies and people and pull stuck cars out of drifts.

The army surplus truck led a Goodland ambulance to a rural home west of town Sunday night to pick up a 45-year-old man com-

plaining of chest pains.

When the sun began to break through on Sunday, people who had been trapped by the storm began trying to find ways to get out on the highways, and the pressure mounted with a report that I-70 had reopened in Colorado.

Wind-blown snow continued to make traveling difficult, with reports of slide offs and a couple of rollovers on I-70 near Edson.

Highway K-27 remained closed north and south out of Goodland until Monday, and on Sunday cars and trucks which drove around barriers in Sharon Springs and Wheeler were greeted in Goodland with tickets from the highway patrol and

sheriff deputies.

The Kansas National Guard closed its shelter at the army in Colby on Sunday, but the facility was turned over to Colby Fire Department crews and equipment following the collapse of part of the roof at the Colby fire station under heavy snow. No injuries were reported.

A Kansas Highway Patrol airplane crew found two stranded vehicles on Sunday, both with people inside, one along K-27 near Tribune and another along K-96 in Greeley County. The people were rescued by sheriff's deputies.

The aircraft crew flew over parts of southwest Kansas to search for

stranded motorists and look for damage not yet reported to officials.

A weather-related death was under investigation in Wallace County on Sunday. The sheriff's department is investigating the death of a 48-year-old man found in a rural home.

Initial reports indicate a generator was in use at the home, but the cause of death had not been determined and the victim's identity had not been released.

Gov. Kathleen Sebelius on Saturday designated 39 counties in western Kansas, including Sherman, as a disaster area following the storm, all west of U.S. 183.

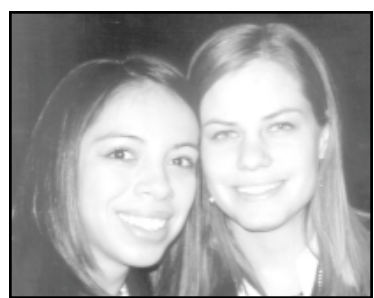
Goodland graduate competes in California

Jill Sowers, daughter of Rue and Marilyn Sowers of Goodland, and Paola Ponce competed in the final round of the 11th Annual American Society of Health-System Pharmacists National Clinical Skills Competition.

The competition was held Saturday and Sunday, Dec. 2 and 3, in Anaheim, Calif. Sowers and Ponce are students at the School of Pharmacy at the University of Kansas, and Sowers graduated from Goodland High School in 2001.

In preliminary competition on Saturday, 86 teams were cut to the top 10. Each team had two hours to evaluate and write a complex clinical case.

Sowers and Ponce made the top 10 teams. Each of the finalists gave a five-minute oral presentation of their clinical case followed by questions from the judges. Julie Long



Ponce and Sowers

and Karen Hembree Spry of the Medical University of South Carolina took the top honors.

Each of the finalists got a copy of the society's PharmPrep CD and \$100 gift certificate for purchase of the society's products and services.

corrections

The Goodland Star-News will correct any mistake or misunderstanding in a news story. Please call our office at (785) 899-2338 to report errors.

We believe that news should be fair and factual.

We want to keep an accurate record and appreciate you calling to our attention any failure to live up to this standard.

YOUR TIMING WON'T BE OFF WHEN YOU INVEST REGULARLY

If one of your worries is whether you're investing at the right time, it shouldn't be. By investing a set amount of money regularly, you establish a simple routine that makes it possible to use market fluctuations to your advantage.

To learn how investing on a regular basis can help you reach your financial goals, call today.

Investing a set amount of money on a regular basis does not ensure a profit and does not protect against loss in declining markets. Such a plan involves continual investment in securities regardless of fluctuating price levels of such securities. You should consider your financial ability to continue the purchases through periods of low price levels.



Kris Yost
Investment Representative
114 E 11th
Goodland, KS,
67735
785-899-3611

www.edwardjones.com
Member SIPC

Edward Jones
MAKING SENSE OF INVESTING

ADVERTISEMENT FOR BIDS

**ROAD IMPROVEMENT
OLD HIGHWAY 24, AKA COUNTY ROAD 64/64.2
2007
SHERMAN COUNTY**

OWNER: SHERMAN COUNTY
**ENGINEER: PENCO ENGINEERING, P.A.
711 NW 3RD STREET, PO BOX 392
PLAINVILLE, KANSAS, 67663
TEL: (785) 434-4611 FAX: (785) 434-4612**

Sherman County will receive sealed bids for the ROAD IMPROVEMENT-OLD HIGHWAY 24-2007 project at the office of the Sherman County Clerk, 813 Broadway, Goodland Kansas, 67735 until 9:00 a.m. (Mountain Time) on Wednesday, January, 24, 2007. Bids received after this time will not be accepted. Bids will publicly opened and read aloud immediately after the specified closing time.

Major items of work include:

Option 1: 81343 tons of BM-2, 4459 tons of PG 64-22, 25981 tons of Milling, and 3479 Sta. of Pavement Edge Wedge.

Option 2: 83222 tons of BM-2, 4562 tons of PG 64-22, 29379 tons of Milling; 3479 Sta. of Pavement Edge Wedge, and 1200 square yards of Subgrade Modification.

The CONTRACT DOCUMENTS may be examined at the following locations: Sherman County Public Works Department, 1004 West 8th, Goodland, Kansas 67735 or Penco Engineering, P.A., 711 NW 3rd St. Plainville, Kansas 67663.

Copies of the CONTRACT DOCUMENTS may be obtained at the office of PENCO ENGINEERING, P.A., PO Box 392, 711 NW 3rd Street, Plainville, Kansas 67663, upon payment of \$75.00 for each set Document holders of record returning the documents in good condition within 30 days after the opening bids will be refunded \$25.00 per set.

Sherman County reserves the right to reject any or all proposals and to waive any or all technicalities.

December 29, 2006
Date

/s/ Jerol J. DeBoer, Consultant

Classifieds work! 899-2338

DOOR DING DAY!!

Lanny's Quality
Since 1975 Auto Body Inc

Wednesday, Jan. 10
Get those ugly door dings fixed. Drop off your car or call for appt. Most repairs take **about 1 hour!**
(785) 899-6311 or (800) 525-4099
Hail repair estimates available.