

# COLBY FREE PRESS

10 pages

## Schools expect deep cuts

By Sam Dieter

Colby Free Press  
sdieter@nwkansas.com

The Colby Public Schools and other Kansas districts are bracing for possible deep cuts to education, though so far no one is making any actual proposals to trim the budget so far.

During this election year, no plans have been proposed that would specifically slash education funding, but over half of the state's budget goes to college or public school education. Colby Public Schools gets almost half of its money from the state.

Officials from the Kansas Department of Education have been warning school administrators to be ready for cuts, and Colby Superintendent Terrel Harrison is getting ready to do just that.

Harrison told the school board Monday that she is planning on making cuts after meetings in the past two months where she learned that the state's ending balance, the cushion at the end of the year, might drop from a \$709 million surplus in 2012 to a \$238 million shortfall in fiscal year 2016.

On Oct. 7, Harrison said, she met with officials from the Kansas Association of School Boards and Dale Dennis, deputy commissioner of education, at the associa-

tion's fall meeting in Oakley. She learned that state spending is outstripping revenues.

The state Legislative Research Department expects a \$238 million shortfall by the end of July 2016, she said. Tax collections since the shortfall was predicted have not met expectations, and some say the shortfall could be as high as \$260 million.

Harrison said Duane Goossen, a former state budget director, said at the meeting there is no way the state can balance the budget without cutting education or human services. Goossen pointed out that 90 percent of the state's budget falls into those two areas, and the state has no choice but to pay its Medicaid bills.

Harrison said she has grown more and more certain cuts will be needed over the past month. At a United School Administrators meeting Sept. 4 in Hays, she picked up some discouraging information from Dennis and Craig Neuenswander, school finance team director for the department.

At that meeting, she said, Dennis showed her a report from the research department that the state budget surplus — the money the state had left over at year end —

See "CUTS," Page 2

## K-25 fourth on 'wish list'

By Steve Haynes

Colby Free Press  
steve.haynes@nwkansas.com

Colby representatives pushed a project to rebuild K-25 from Colby north to Atwood, noting the dangers of a roadway built with no shoulders and some steep drop offs, at a "local consult" meeting last Tuesday in Hays with state transportation officials.

One Colby representative called the road a "missing link" in the state system. Others in the delegation, which included County Commissioner Paul Steele, mentioned the "Nine-Mile" intersection of U.S. 83 and U.S. 24 as a dangerous spot.

At the meeting, participants were split into three discussion groups and given three dots each

to "vote" for projects. Rebuilding K-23 north of Grainfield led the pack by a good margin, followed by adding a north leg to the U.S. 183 bypass around the west side of Hays and rebuilding U.S. 281 north of Osborne came next. K-25 from Colby to Atwood made the "A" list in fourth place, thanks to the Colby delegation.

Secretary of Transportation Mike King led the discussion, noting that nothing guaranteed the "winning" projects would be built any time soon. At best, they'll be designated for "preliminary engineering," which might include a survey, planning and possible right-of-way acquisition.

Projects could be built only if there is money left over in the cur-

See "K-25," Page 2



## 'By all means, after you'

Corey Marcum (top) seemed to be waiting for Anna Kuhlman to jump first into an adult's arms Tuesday night in the Colby Community College pool. Anna's grandmother Nana (right) helped her through the shallow end Tuesday at the Babyquatics class taught by Samantha Miller. Three babies showed up this week (below), but Miller said as many as six or seven kids have been brought by adults to learn swimming early.

SAM DIETER/Colby Free Press



## Art show draws 'quality work'

The High Plains Art Club held its third annual show Saturday and Sunday at Heartland Christian School with 97 entries from all over Kansas and several other states.

Rick Johnson, art instructor at McCook Community College in Nebraska, judged the show.

"I am pleased with the quality of work displayed," he said, "especially in the student division."

Saturday morning, Johnson gave a critique of the prize-winning entries. President Marlene Carpenter said the club couldn't continue to present such a successful show without the help of its sponsors, which included American Implementation, Colby Ag Center, Darryl Henry of Edward Jones, Dillon's Grocery, Donelan Jewelry, Dr. Tim Poling, Farmers and Mer-

chants Bank, Holiday Inn Express, Inlow Interiors, Palace Drug Store, Stramel Law Firm, Tina Harris Physical Therapy and the Sports Medicine Center.

"We also want to thank Heartland Christian School for the use of their facility," she said, "and their football team and volleyball team for their assistance in setting up the art display units. That was a great help."

Prizes were awarded at a reception on Saturday night at the school cafeteria. The Rev. Tom Peyton, a club member, was master of ceremonies and Carpenter and vice president Margaret Denneler handed out checks.

David Ketchum of Rexford took Best of Show for "Self-Portrait 2014."

Other winners included: **Student acrylic:** Allie Friesen, Colby High School; and Desmond Guy, Colby High, second.

**Adult amateur acrylic:** Peyton, Mingo, first; Ketchum, sec-

ond.

**Student oil:** no prizes awarded.

**Adult amateur oil division:** Amanda Micaela Rivera, Garden City, first; Marilyn Frisbie, McDonald, second.

**Graphite pencil and charcoal student:** Amalia Werner, Plainville High School, first; Brielle McKee, Colby High School, second.

**Adult amateur pencil and charcoal:** Hannah Lindo, Garden City; Frankie D. Burns Jr., Garden City, second.

**Mixed media and 3-D student:** Amalia Werner, Plainville High School, first; Hayoung Chang, Colby High, People's Choice Award and also first place.

**Adult amateur mixed media and 3-D:** Sarah Krehbiel, Inman, first, and People's Choice; Bev Kern, Colby, second.

**Sculpture, ceramic, pottery and stained glass student:** Kelly Sloan, Colby High, first; Brady Holzmeister, Colby High, second.

**Adult amateur sculpture, ceramic, pottery and stained glass:** John Anderson, McCook, Nebraska, first, and David Pabst, Colby, second.

**Watercolor student:** Hayoung Chang, Colby High; and Brielle McKee, Colby High, second.

**Adult amateur watercolor:** Brown, Colby, first; Ron Evans, McCook, second.

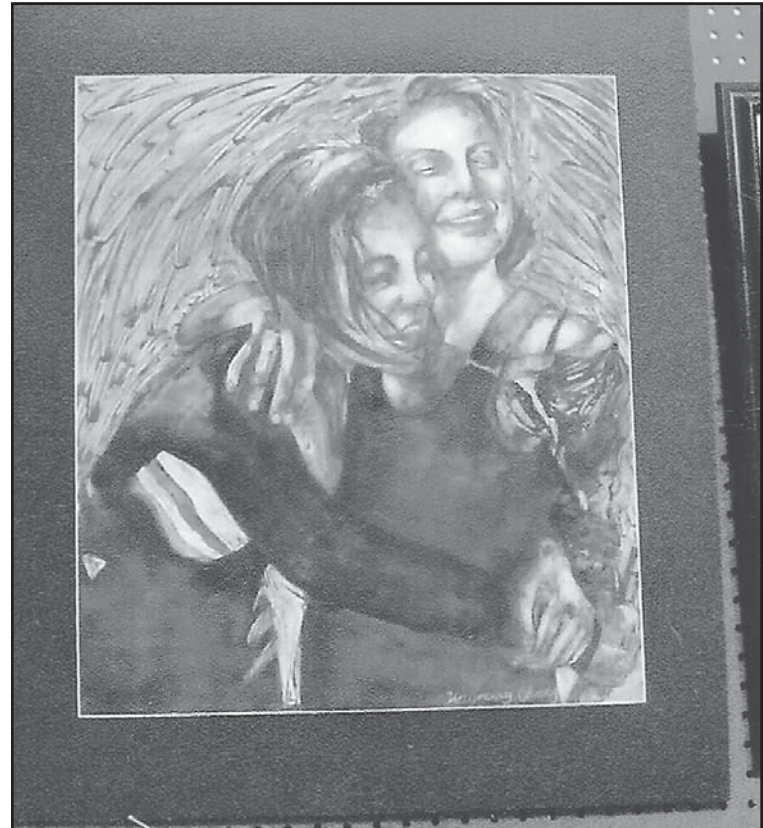
**Pastel and colored pencil student:** Kaylee Martin, Colby High.

**Adult amateur pastel and colored pencil:** Jatou Denneler, Colby, first; Barb Highland, Colby, second.

**Photography:** No student entries.

**Adult amateur photography:** Jim Brown, Colby, first; David Pabst, Colby, second.

Wildlife artist Shirley Baker of Hoxie drew the name of the winner of her painting, "Ducks in Flight," that club members were selling chances on. It went to Brenda Drey of Dallas.



The painting, "Inseparable," by Colby High School exchange student from South Korea, Hayong Chang, received the student, "People's Choice Award," and a first place in the mixed media division at the High Plains Art Club's show over the weekend.



8 10499 02034 8



## Weather



National Weather Service  
**Tonight:** Clear, with a low around 48. Calm wind becoming south around 5 mph after midnight.  
**Saturday:** Sunny, with a high near 84. West wind 5 to 10 mph becoming east in the afternoon.  
**Saturday Night:** Clear, with a low around 47. Southeast wind around 5 mph becoming south-west after midnight.  
**Sunday:** Sunny, with a high near 83. Northwest wind 5 to 10 mph.  
**Sunday Night:** Mostly clear, with a low around 48.  
**Monday:** A 20 percent chance of showers. Mostly sunny, with a high near 64.  
**Monday Night:** A 20 percent chance of showers. Partly cloudy, with a low around 38.  
**Tuesday:** Sunny, with a high near 60.  
**Tuesday Night:** Mostly clear, with a low around 37.  
**Wednesday:** Sunny, with a high near 66.  
**Wednesday Night:** Mostly clear, with a low around 37.  
**Thursday:** Sunny, with a high near 65.

Thursday: High, 71; Low 45  
Precip: Thursday None  
Month: 0.48 inches  
Year: 16.79 inches  
Normal: 19.29 inches  
(K-State Experiment Station)  
**Sunrise and Sunset**  
Saturday 8:05 a.m. 6:51 p.m.  
Moon: waxing, 4 percent  
Sunday 8:06 a.m. 6:50 p.m.  
Moon: waxing, 8 percent  
Monday 8:07 a.m. 6:49 p.m.  
Moon: waxing, 15 percent  
(U.S. Naval Observatory)

## K-25 fourth on 'wish list'

From "K-25," Page 1

rent T-Works transportation plan or, more likely, during the next plan to be drawn up after 2018.  
King said the \$7.8 billion T-Works plan is on track to be completed on time. To date, he added, it has improved 7,714 miles and 559 bridges on the state's 10,000 miles of highways. Projects range from sealing and overlays to building entire new roads.  
The Hays meeting — one of eight statewide — focused on the department's District 3, based in Norton and covering northwest Kansas. Jerry Younger, state transportation engineer and deputy secretary, the department's No. 2, said the state has spent \$248.6 million on 1,276 miles of improvements in the district so far under T-Works.  
Another \$512.6 million is scheduled, he said, including major work on I-70. Other projects yet to be done include rebuilding 11 miles of U.S. 83 between Rexford and the Selden junction with K-383 and K-23 at \$17 million, 25 miles of K-383 from Norton to the Nebraska line at \$54 million, five miles of K-27 south of Sharon Springs for \$11 million and 15 miles of U.S. 281 north of Russell for \$32 million. Except for the U.S. 83 work, all the projects include adding shoulders, shaving down hills and improving safety factors.  
Other projects on the list for possible improvement include 25 miles of K-27 in Wallace County, the last part of that highway still with-

out shoulders, at a cost of \$44 million. Work on K-23 is estimated at \$28 million, K-25 north of Colby at \$23 million, U.S. 183 Bypass around the Walmart-Home Depot area north of Hays at \$11 million for 3.5 miles and U.S. 281 at \$60 million.  
One problem the department faces, said Kent Olson, director of fiscal and asset management in Topeka, is money: The department depends on fuel tax for nearly 60 percent of revenue, but gasoline consumption is being driven down by regulations requiring manufacturers to boost mileage.  
At the same time, truck traffic is up, driving up diesel fuel use but also wearing down highways faster. Sales tax income and license fees continue to rise, but the Legislature keeps diverting highway money to other uses, up to \$1 billion over the last decade by one estimate.  
The K-23 improvements were backed by a group from Hoxie that included banker Joe Pratt and several others. Oberlin and Jennings representatives joined in. Decatur County commissioners have taken the unusual step of declaring the project a priority though it's not in their county.  
The deadly, hill-studded stretch north of Grainfield includes 2 1/2 miles from just north of Interstate 70 to the Saline River bridge with a continuous double yellow line, no passing allowed. At least five people have been killed and another couple badly injured there in the last 20 years. In most wrecks, a driver got tired of the double yellow and tried to pass on a hill.

## Schools expect deep cuts

From "CUTS," Page 1

dropped from \$709 million at the end of the 2012-2013 budget year in June 2013 to \$379 million the end of last fiscal year June 30. By June of next year, it is projected to be just \$29.4 million.  
No specific cuts have been proposed to the education budget so far this year, Harrison said later, which means school districts do not know where cuts might be made.  
"That's what scares all of us," she said.  
Officials with the Kansas Center for Economic Development presented information which shows that the base state aid per pupil — the state money the school district gets for each student — has dropped statewide from \$4,888 in 2008 and 2009 to \$3,852 for this school year, bringing the amount of money

going to districts statewide down \$371 million overall. In that time, 19,000 more students have started going to Kansas schools, but there are 665 fewer teachers. The state provides about 53 percent of the money going into public education.  
For the current 2014-2015 fiscal year, the school board approved a \$13.5 million budget. Out of the \$11.3 million of the district budget that was not money left over from last fiscal year, said district Business Manager Jo DeYoung, right around half will come from the state. Fifty-six percent of that figure is state money, but DeYoung pointed out this includes \$609,450 the state is keeping on hand for district employees in the Kansas Public Employees Retirement System. The amount of state money the district actually plans to spend, she said, comes to, \$5,743,036, or 54 percent of the \$11.3 million.  
This includes about 78 percent of the district's general fund that is expected to come from the state, she said. The projected figure now is \$4,910,053, and DeYoung was confident the final number will be very close to that. That figure depends both on the base state aid and the way money is weighted for some students; the district gets more money for kids in special education, for instance.  
Out of the supplemental general fund, 34 percent, or \$740,678, and in the capital outlay fund, 10 percent, or \$84,333, comes from the state.  
Dennis said that state's cash balance has been declining, but he has not heard of anyone in state government proposing cuts to public schools.

"We've been told (by Gov. Sam Brownback) that there will be no cuts in K-12 this year," Dennis said.  
Mark Tallman, associate director for advocacy for the school boards, who was at the meeting in Oakley, agreed that there are no public officials proposing any cuts to education, but added that he is not optimistic about the state of the budget.  
"The concern would be that it would be very difficult to avoid making cuts to education," Tallman said.  
Tallman pointed out that the state has not seen any cuts this year in education, but the amount of the expected shortfall varies widely month to month.  
"Revenues this year have been much lower than expected," Tallman said. "We are spending more than we're taking in."  
The Legislature will start working on the coming year's budget in January, Tallman said, and for schools to be unaffected, it would have make cuts to account for that shortfall without cutting education, which would be difficult. He said half of the state general fund is used for public schools, with another 15 percent for higher education.  
"The (Kansas Department of Education) is trying to warn them so that they're not surprised if that happens," Tallman said. "If you have to make those cuts, somebody is going to feel a lot of pain."  
And when the education budget is reduced, he added, it has usually come out to the base state aid, not any specific fund.

## Class fights bullying

A Colby martial arts studio will put on a seminar this weekend to help kids keep from becoming the victims of bullies and deal with bullying if it happens to them.  
Zejda's Martial Arts will have its bullying prevention seminar from 3 p.m. to 6:30 p.m. Saturday in the meeting room at the Colby Community College Student Union. The event is free and open to all area children, but attendance will be limited to 35 kids and their parents. Pizza and prizes will be provided.  
"It's going to teach them how to deal with the situation of being bullied," said instructor and owner Christine Zejda. She said

it also will teach kids how to communicate with parents if they see bullying.  
Zejda said the class will build up confidence in the kids who take it and tear down myths about bullying. Her leadership team, a group of martial arts students training to be instructors, will help at the seminar.  
The seminar is part of an international effort by the American Taekwondo Association to teach bullying prevention using Olweus Bullying Prevention Program. Zejda's is one of 1,200 schools in the association, which has 3,500 active members.  
Call Zejda at 443-1375 for information or to register.

## Briefly

The deadline for Briefly is noon the day before. The deadline for Monday's paper is noon Friday.

### Colby Public Schools grade cards delayed

Because of a hardware failure, the Colby Public School information program PowerSchool has been off line since early last week, delaying grades. Officials said the district is working on the system. Go to [www.colbyeagles.org](http://www.colbyeagles.org) for updates, or call the administrative office at 460-5000.

### Genesis gears up for holiday project.

Genesis-Thomas County food bank plans again to help feed hungry families during the holidays. Anyone interested in receiving a food basket should pick up forms from 10 a.m. to noon and 1 to 4 p.m. Wednesdays at the office, 350 S. Range Ave., Suite 13, or call the food bank at 460-7930. Forms are also available at the Pioneer Memorial Library, the Thomas County Health Department and the Kansas Department for Children and Families office. These must be returned by Thursday, Nov. 6.

### Construction shifts emergency room entry

Due to construction, access to the Citizens Medical Center emergency room beginning Monday will be through the southwest "birthing room" entrance off Franklin Ave. Concrete work between the hospital and clinic will close off the College Drive entrance. For information, contact Megan Carmichael at 460-1214.

### Used books haunt library's sale shelves

You'll find some hauntingly good bargains during the Spooktacular Book Sale at the Pioneer Memorial Library, continuing from 10 a.m. to 3:30 p.m. Saturday. For information, call the library at 460-4470.

### Baptist Church invites all to free lunch

Come and bring a friend to a free "Joyful Blessings" meal from 11:30 a.m. to 12:30 p.m. Saturday at the First Baptist Church, Webster and Grant. Everyone is welcome. For information, call Radonda Buford at 462-2804.

### Sacred Heart auction set for Saturday

The Sacred Heart Parish Auction will be Saturday at the City Limits Convention Center. For tickets, call Kathy Britton at 462-2179.

### Haunted House set to scare at fairgrounds

The American Youth Soccer Organization's haunted house will open at 7 p.m. Friday and Saturday and Thursday to Saturday, Nov. 1, at the Thomas County Fairgrounds. A children's matinee will run from 1 to 7 p.m. Sunday for \$4. General admission is \$7. For information, call Emily Griffin at 443-5884.

### Kiwanis plans feed for fall weekend

Come to the Kiwanis Pancake Feed from 7 a.m. to 2 p.m. Saturday at the Veterans of Foreign Wars Hall, 220 N. Lake, in downtown Colby. For a \$5 donation, get all you can eat. Proceeds go for Christmas, youth and community projects. For information, call Kenton Krehbiel at (785) 443-3437.

### 'End Times' Bible study starts Tuesday

"Understanding the End Times," a DVD Bible study by Irvin Baxter, will begin Tuesday at 1060 Villa Vista in Colby. For information, call Shirley Haxlett at 462-8271.

### Reception Wednesday for departing medic

A going-away reception for physician assistant Andy Rose, who will be leaving to move closer to family, will be held from 2 to 3 p.m. Wednesday in the Citizens Medical Center cafeteria. Be sure to swing by and wish him a fond farewell. For information, contact Megan Carmichael at 460-1214.

### Relay for Life volunteers to organize

Volunteers are needed for the 2015 Relay for Life. Bring your ideas to a planning meeting at 7 p.m. Thursday, Oct. 30, in the Thomas County Office Complex meeting room. One item to discuss is a new option of only going to midnight. For information or if you are interested in helping but unable to attend, call Tammy Kimminau, American Cancer Society staff, at (785) 819-2714, or email her at [tammy.kimminau@cancer.org](mailto:tammy.kimminau@cancer.org).

### Grass clipping collection to end Nov. 1

The Colby Sanitation Department will stop picking up grass clippings on as of Saturday, Nov. 1. After that date, put grass clippings in with regular trash throughout the winter. We will announce resumption of clippings-only pickups in the spring. For questions, call Omar Weber at the Public Works Department 460-4420.

## LOCAL TV LISTINGS sponsored by the COLBY FREE PRESS

### MONDAY EVENING

### OCTOBER 27, 2014

	7:00	7:30	8:00	8:30	9:00	9:30	10:00	10:30	11:00	11:30	
BROADCAST	ABC	Dancing with the Stars (N) HD			(01) Castle (N) HD	Local		Jimmy Kimmel Live HD	Nightline		
	CBS	Broke Girl	Millers (N)	Scorpion (N) HD		NCIS: Los Angeles (N)	Local	(35) Late Show (N) HD	Late Late		
	NBC	The Voice : "The Knockouts Premiere" (N) HD			The Blacklist (N) HD	Local	(35) Tonight Show HD		Late Night		
	FOX	Gotham (N) HD	Sleepy Hollow (N) HD			Local Programs					
	ION	Criminal Minds HD	Criminal Minds HD		Blue Bloods HD		Blue Bloods HD		Blue Bloods HD		
	CABLE	A&E	The First 48 HD	To Be Announced		The First 48 HD	(02) The First 48 HD	(01) The First 48 HD			
		AMC	Halloween (78, R) HD	Halloween II (81, R)	★★★½ Jamie Lee Curtis.	Halloween (78, R) ★★★½ Jamie Lee Curtis.					
		ANIMAL	The Hunt for Hogzilla	River Monsters: Unhooked : "Apocalypse" (N) HD		River Monsters (N) HD		River Monsters HD			
		BET	Gracie 2 the Grave (03, R)	Jet Li.		Paid in Full (02, R) ★★★½ Mekhi Phifer.	Wood Harris.			Wendy Williams (N) HD	
		BRAVO	Housewives/Real Housewives			Real Housewives	Bravo (N)	Watch What Manzo'd		Real Housewives	
		CARTOON	King Hill	King Hill	Cleveland	Cleveland	Dad HD	Robot	Family Guy	Family Guy	Robot
Squid HD											
CMT		Steel Magnolias (89, PG)	★★★ Sally Field, Dolly Parton.			Cops HD	Cops HD	Cops HD	Cops HD		
CNN		Anderson Cooper 360*	Anderson Cooper 360*			CNN Tonight (N)		CNN Tonight (N)		CNN Simulcast (N)	
COMEDY		Futurama	Futurama	South Park	South Park	South Park	South Park	Daily (N)	Colbert (N)	midnight	
DISCOVERY		Fast N' Loud (N) HD	Fast N' Loud (N) HD			Misfit Garage HD		Misfit Garage HD			
DISNEY	My Babysitter's a Vampire (10, NR)	★★			Austin HD	Girl Meets	Babysitter	Babysitter	Good Luck		
Good Luck									Good Luck		
E!	Live (N) HD	The Soup	Botched HD		Botched (N) HD		E! News HD		Live HD		
Botched									Botched		
ESPN	(15) Monday Night Football: Washington vs Dallas (Live) HD					(20) SportsCenter Sports news.					
ESPN2	Grantland Bask.	2014 WSOP (Taped)		2014 WSOP (Taped)		(15) College Ftbl HD		E:60 HD			
FAMILY	(6:00) ParaNorman (12)	Casper (95, PG)	Christina Ricci, Bill Pullman.		HD	The 700 Club (TV G)		Scooby-Doo 2 (04) HD			
FOOD	Hungry (N)	Mystery	Mystery		Restaurant: Impossible	Restaurant: Impossible	Mystery	Mystery			
FX	Final Destination 5 (11, R)	Nicholas D'Agosta.			Paranormal Activity 3 (11, R)	★★½ Lauren Bittner.		Paranormal 3 (11)			
HGTV	Love It or List It HD	Love It or List It (N) HD		Hunters	Hunters	Love It or List It HD		Love It or List It HD			
HISTORY	American Pickers HD	American Pickers HD		American Pickers HD		American Pickers HD		American Pickers HD			
LIFETIME	A Warden's Ransom (14, NR)	Devon Sawa.		(01) Taken for Ransom (13, NR)	Tari Polo.		Warden's Ransom (14)				
MTV	Girl Code	Girl Code	Are You the One? HD	Are You the One? (N)	The One?	Are You the One? HD		True Life			
NICK	Full Hse	Full Hse	Full Hse	Full Hse	Prince	Prince	Friends	Friends	How I Met		
How I Met									How I Met		
SPIKE	Stephen King's It (90, NR)	★★ Annette O'Toole, Tim Curry.						Last House (09) ★★★			
SYFY	The Happening (08)		The Crazies (10, R) ★★★	Timothy Olyphant.		Lost Souls (00, R) ★½ Winona Ryder.					
TBS	Family Guy	Family Guy	Dad (N) HD	Dad HD	Big Bang	Big Bang	Conan (N) HD	Cougar	Conan HD		
TCM	On Borrowed Time (39, NR)	Lionel Barrymore.			Make Way for Tomorrow		(37, NR) Beulah Bondi.		1 Ft. in Heaven (41)		
TLC	90 Day Fiance HD	90 Day Fiance HD		My Online Bride (N) HD		90 Day Fiance HD		90 Day Fiance HD			
TNT	Castle : "Setup" HD		Castle : "Countdown"		(02) Major Crimes HD	(03) Law & Order HD	(03) Law & Order HD				
TRAVEL	Bizarre Foods America	Bizarre Foods America		Bizarre Foods America		Bizarre Foods		Bizarre Foods			
TV LAND	Fam. Feud	Fam. Feud	Fam. Feud	Soul Man	The Exes	Cleveland	Friends	Friends	Queens		
Queens									Queens		
USA	WWE Monday Night Raw HD					Chrissy	Chrissy	NGIS: Los Angeles			
VH1	Love & Hip Hop (N)		Drumline: A New Beat (14, NR) HD			Love & Hip Hop		Drumline			
WGN	Home Videos HD	Home Videos HD	Home Videos HD	Home Videos HD	Home Videos HD	Home Videos HD	Parks HD	Parks HD			
HBO	(8:15) R.I.P.D. (13) HD		Mr. Dynamite: The Rise of James Brown (14)		True Detective HD		Foo Fighters: Sonic		Gravity (13, PG-13) HD		
MAX	Gatsby HD	Hot Shots!	★★½		A Good Day to Die Hard (13, R) HD	Max 10		Gravity (13, PG-13) HD			
SHOW	Homeland HD	The Affair		Homeland HD		The Affair		Therapy	Van Wilder		

## Sleep Beautifully

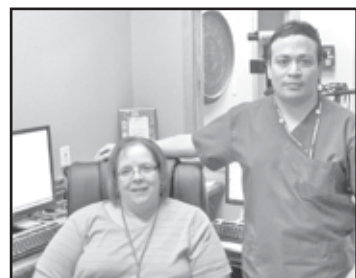


Did you know sleep problems can have an adverse effect on health issues, such as diabetes, blood pressure problems, cardio-vascular health and your general well-being? The Sleep Disorder Center at Scott County Hospital provides state of the art evaluations and treatment of sleep disorders for adults and pediatrics (children). It provides 2 private bedrooms with bathrooms and a living room area to provide a home-like ambiance.



Dr. Robert Ballard

Sleep studies are read by Dr. Robert Ballard, M.D., certified by the American Academy of Sleep Medicine and Board Certified in pulmonary disease. Our Sleep Technicians can help eliminate, under Dr. Ballard's guidance, the risk bad sleep habits can put on your overall health, and also treat specific issues. Our Technicians are bi-lingual to better serve our patients.



Scott County Hospital Sleep Disorder Center can treat sleep disorders including: snoring, sleep apnea, insomnia, nightmares, bed wetting, sleep walking/talking, restless leg syndrome, fatigue and much more. By diagnosing, treating and managing these disorders, we hope to improve the quality and longevity of our patient's lives.

## Sleep Disorder Center at Scott County Hospital

201 Albert Avenue, Scott City, KS 67871 • Phone: (620) 874-4856

[www.scotthospital.net](http://www.scotthospital.net)



# Plan health insurance enrollment

If you haven't already, it's time for you and your family to review your health insurance options, as annual open enrollment in the Kansas Health Insurance Marketplace (www.healthcare.gov/kansas-health-insurance-marketplace/) for 2015 coverage begins Saturday, Nov. 15. Many employers and some public programs, such as Medicare, also use the fall as a time for annual enrollment or the renewal of health insurance plans.

"The Affordable Care Act requires that you are insured for at least nine months out of every year, or you will have to pay a penalty at tax time for being uninsured," said Roberta Riportella, Kansas Health Foundation professor of community health at Kansas State University. "There are some exceptions to the penalty, but for the most part, you should consider the benefits of being insured as compared to paying a penalty."

Generally, you can only buy health insur-

ance coverage during annual open enrollment periods, but there are exceptions.

If you have a qualifying life event such as losing coverage through a job, getting married, or having a child, you can change your health insurance outside of the open enrollment period. This is called a special enrollment period, Riportella said. It is best to take advantage of the open enrollment period, though, because it is difficult to change coverage if you don't experience a qualifying life event.

Specifications for enrollment in health insurance coverage, by type of coverage, include:

- Insurance coverage through an employer: your employer determines the open enrollment dates. The dates will likely vary from employer to employer. If you have a spouse, you will likely have two different open enrollment periods to keep track of each year. If you are not sure when your next job-based open enrollment period is, ask your employer.

• Insurance from the marketplace: for plans starting Jan. 1, the marketplace open enrollment period is Nov. 15 through Feb. 15

• Insurance through Medicare: Medicare's initial enrollment period is a seven-month window surrounding your 65th birthday, or for those under 65 and disabled, the seven months surrounding the 25th month of disability. Special enrollment periods for Medicare vary, and specific rules and timing can be found on the Medicare website (www.medicare.gov/Pubs/pdf/11219.pdf). If a beneficiary has missed the initial enrollment period and is not eligible for a special enrollment period, the Medicare general enrollment period runs Jan. 1 to March 31 each year, with coverage beginning July 1 of that year.

• Insurance though KanCare: this is Kansas' Medicaid program. Applications for KanCare can be submitted at any time.

# Compare plans for features you need

A health insurance policy, is a legally binding contract of usually one year between an insurance company and the insured. You should be given details of how the plan will work. Those details should include the benefits covered, how much you will pay and a set of health care providers, called a provider network.

Review several aspects of insurance policies before you choose, Roberta Riportella, professor of community health at Kansas State University, said. Also, since health insurance plans change from year to year, review the details of renewal contracts. The plans could change on items such as provider networks and prescription drug coverage.

Different medical situations require more care than others, she said. Before examining the benefits in each plan, you need to understand your health care needs and identify if you're at risk for a particular need. You will be trying to match your predicted needs against the coverage and costs of eligible plans.

"Some future needs are not as predictable," Riportella said. "The best we can do is plan around the needs we know we have today."

The benefit packages within different plans will likely differ, but because of the Affordable Care Act, all plans are now required to cover at minimum the same basic set of benefits. The following types of services represent essential health benefits:

- Care before and after your baby is born.
- Outpatient care (what you get without being admitted to a hospital).
- Trips to the emergency room.
- Treatment in the hospital for inpatient care.
- Mental health and substance use disorder services (includes behavioral health treatment, counseling and psychotherapy).
- Prescription drugs.
- Services and devices to help you recover if you are injured, or have a disability or chronic condition (physical and occupational therapy, speech-language pathology and psychiatric rehabilitation).
- Lab tests.

• Preventive services such as counseling, screenings and vaccines to keep you healthy (provided at no cost to you).

• Care for managing a chronic disease.

• Pediatric services (ages 0-19, including kids' dental and vision care).

How much the plan will cost in a typical year will likely weigh in your decision. The premium is the monthly fixed charge you pay, regardless of how much medical care you use or do not use, Riportella said. That makes the premium the most predictable cost.

If you are purchasing health insurance in the marketplace, bronze level plans will likely have the least costly premiums, and silver, gold and platinum plans will have higher premiums.

"As with anything, you get what you pay for," Riportella said. "If you pay more upfront in premiums, you will pay less for each service you use down the road. You also may get a more complete plan that covers more benefits."

"If you are relatively healthy and comfortable with carrying risk, you can choose a policy with a low premium such as a bronze plan," she added. "... You could be paying large copayments or co-insurance for your care expenses. If you have a significant health event, that might bring you close to the out-of-pocket maximum — the maximum amount a person will have to pay for health care expenses within the year."

You and your family members could be better off with different policies, she said. Younger adults typically don't need the same coverage as their middle-aged parents. Policies for younger adults are usually much less expensive, which makes separate policies reasonable.

Sometimes spouses have different health care needs, so considering different policies might be the best option.

"If situations exist where family members might benefit from different plans, you should look at a variety of options," Riportella said. "Usually an employer offers only an individual plan or a family plan. Depending on income

level and tax credit eligibility, you might benefit from finding a plan in the marketplace for the children or the spouse ... especially be true if there is a young adult in the family who might be best off with a low premium cost but high deductible catastrophic plan."

Young adults under age 30, and some lower income individuals, are eligible to select a catastrophic policy with a low premium but high deductible. This type of plan requires you to pay out of pocket most everyday costs of health care except for preventive services, which are free to the insured. But, for other health care services, the insurer begins paying after paying the deductible.

Those who are purchasing a plan in the marketplace might also be eligible for tax credits to help pay for premiums, which can make their plans more affordable. Riportella said a family of four with an annual income less than \$94,200 is eligible for premium assistance. If the same family has an annual income less than \$58,875, that family is eligible for assistance with the coinsurance and copayments. Those income levels for eligibility will adjust each spring.

Riportella added that when you have employer-sponsored insurance and are considering plans for other family members in the marketplace, your eligibility for tax credits to help pay for premiums in marketplace plans can get complicated. It is best to speak either to your benefit counselors at your place of work or call the marketplace at (800) 318-2596 to find out more.

Another way to help you save money on health care is studying the various plans' specific provider networks and drug formulary.

If you are already on medications, Riportella said it's important to review the list to see that the drugs you and your doctor prefer are on it. Check also to make sure your pharmacy is within the provider network. While you may be allowed to go to doctors and pharmacies not in the network, it almost always will cost you more.

"Insurance companies make deals with doctors, hospitals,

pharmacies and other health care providers so those providers will accept less than their usual charges," she said. "This works to keep payments to those providers more reasonable, and therefore, premiums for the insurance are more reasonable. Provider groups accept these payments, because it guarantees them a flow of patients..."

People should also remember that they cannot be denied health insurance because of a pre-existing condition and cannot have a policy canceled due to becoming sick. You can, however, lose your insurance coverage for non-payment of premiums.

Each situation is different, so if you have specific questions about your health insurance coverage, you might have a local navigator, someone specifically trained to help you understand the marketplace, in your community who can help. Find out if you have a local navigator available at insureks.org/assistance.php.

Delays in enrollment and coverage, and penalties, may apply if the consumer does not enroll at the appropriate time. Make sure to check with your employer now about your specific enrollment period. If obtaining insurance through the marketplace, log on to www.healthcare.gov. To learn more about how to enroll in the marketplace or KanCare, call the marketplace, available 24/7, at (800) 318-2596. The Kansas Health Institute also has numerous resources on its website (www.khi.org/).

## Bridge Club

Meadow Lake Bridge winners Tuesday were: first, Larry Barrett; second, Elaine Ptacek; third, Billie Keck; fourth, Margaret Deneler; fifth, Dave Ulmer.

## Markets

Quotes as of close of previous business day

**Hi-Plains Co-op**

Wheat (bushel)	\$5.60
Corn (bushel)	\$3.44
Milo (hundredweight)	\$6.20
Soybeans (bushel)	\$8.98

# Soul-mates, cell-mates: faith makes difference

For the past few days I have been contemplating the lives of the Bible named Aquila and Priscilla, who appear to me to have been "soul-mates" as husband and wife.



**Tom Peyton**

• From the Pulpit

When Paul first met them at Corinth, in Acts 18:1-3, they had just been forced by the Roman government to leave the city of Rome because of their Christian faith. In fact, they had left a house behind that they had either purchased or built. But, because their occupation as tent-makers was easily portable, they were able to set up a new and prosperous business in Corinth right away.

Paul was also a tent-maker by trade, and they immediately took him in as an associate. When Paul left for Ephesus, they went with him, and set up business there. In fact, they even purchased (or built) a house, in which the newly-established Ephesian church met.

By and by, a man named Apollos came to Ephesus, eloquently preaching powerful sermons. However, he was a little behind the times, not having heard the gospel of salvation by grace through faith in Jesus Christ (he was preaching the message of John the Baptist).

Instead of making a federal case of his error, they took Apollos into their home and graciously set him straight. What a powerful evangelist he then became! (Acts 18:24-28). Finally, Paul greeted Aquila and Priscilla in his letter to the church in Rome, saying, "Greet Priscilla and Aquila, my fellow workers in Christ Jesus, who risked their own necks for my life, to whom not only I give thanks, but also all the churches of the gentiles. Likewise, greet

the church that is in their house" (Romans 16:3-5a).

Why do I think these two were soul-mates? Because they both loved and served the Lord Jesus Christ together, and extended warm hospitality to others in his name. They also worked harmoniously together in the tent-making business. And they must have been quite easy-going and flexible, because they could pull up stakes and move to a new place and set up their business almost effortlessly! There is no hint of stress in their marriage throughout all the external turmoil around them, but rather a sense of supernatural peace.

As I studied their lives, it occurred to me that marriage partners are either soul-mates enjoying a wonderful life together, or "cell-mates" — sentenced to an unhappy life together until death finally sets them free. The difference is Jesus Christ — accepting him as personal Savior, and surrendering ourselves to him as our Lord. When we are filled with his Holy Spirit, He produces in us the fruit of the Spirit: "Love, joy, peace, patience, kindness, goodness, faithfulness, meekness and self-control" (Galatians 5:22-23), all of which make for pleasant relationships. Christians who love and serve and worship Jesus Christ together often prove to be true soul-mates.

Tom Peyton is pastor of the Mingo Bible Church. He may be reached at 462-2992 or at preacherpeyton@gmail.com.

## Corrections

A Briefly item, "Once a Month Lunch Coming Up Saturday," on page 2 of the Wednesday and Thursday Colby Free Press, listed the wrong information. The dinner Saturday is at the First Baptist Church, 615 W. Webster. This

was an editing error.

☆☆☆☆☆  
The Colby Free Press wants to maintain an accurate record of our town. Please report any error or lack of clarity in a news story to us at 462-3963.

**New Full Service Salon**  
**OPENING OCTOBER 28**

Walk-ins Welcome  
175 W. 3rd, Colby • 785-460-1999  
Marcy Carter, Manager & Stylist  
Chelsie White, Stylist

# Services Directory

Worship in the church of your choice this weekend.



First Baptist Church

**FAITH FELLOWSHIP CHURCH**, Pastor Dan Keel, 815 W. 3rd. Sundays at 2 p.m. 785-462-0512.

**CELEBRATION COMMUNITY CHURCH**, 285 E. 5th - Colby Community Building. Kirby Benisch, Campus Pastor. Sunday Worship 10:45 a.m. www.celebratejesus.org

**GATEWAY FELLOWSHIP**, 2nd and Sunrise, Oakley. Pastor James Bloom, Sunday Morning Worship and Children's Church 10:15 a.m., Wednesday evening Bible Study and Intercersory Prayer 6:30 p.m. 785-671-4020.

**COLBY INDEPENDENT BAPTIST CHURCH**, 730 E. 3rd (former Jaycee's building), Pastor Bernard Heinz, 785-460-0313, Sunday School 9:30 a.m., Sunday Morning Worship 10:30 a.m., Sunday Evening 6:00 p.m., Wednesday Evening 7:00 p.m.

**ASCENSION-ON-THE-PRAIRIE EPISCOPAL**, Rev. Don Martin, College Drive & Wheatridge Rd., 785-462-3041, Holy Eucharist, 9:00 a.m. every Sunday. Evening Prayer, 5:15 p.m. Wednesday, September through May.

**COLLEGE DRIVE ASSEMBLY OF GOD**, 245 W. College Dr., Colby. Pastor Steve Todd. Sunday School 9 a.m. for all ages. Worship 10:15 a.m. Kid's Church for Kindergarten- 5th grade during Worship Service. Nursery available for kids birth - 5 yrs old. Wednesday night: Family night September - May. Meal served 6 - 6:30 p.m. CD Kidz for kids birth - 5th grade, Youth Group for 6th - 12th graders and Adult Bible Study at 7 p.m. 785-462-8234. cdag@st-tel.net.

**BEREAN BIBLE FELLOWSHIP**, 1000 S. Franklin, 785-460-2763, www.colbyborean.com; Sunday School 9:30 a.m., Sunday Worship 10:45 a.m. Pastor Mark Carlton, Youth Pastor Ben Phillips. Middle School Group Wednesday 7 p.m. at the Attic and High School Youth Group Sunday 6 p.m. at the Attic. AWANA Wednesdays at 7 p.m. at the church.

**WINONA METHODIST CHURCH**, 501 Bellview Ave. Rev. Sheryl Johnson, Sunday School, 10:30 a.m., Morning Worship 9:15 a.m. (CDT)

**FIRST BAPTIST CHURCH**, (Affiliated with American Baptist Churches USA) Pastor Paul Brigham, 615 W. Webster, 785-462-2867. Sunday School: 9:15 a.m.; Family Worship: 10:30 a.m.; Bible Study: 6:30 p.m.

**COLLEGE VIEW BAPTIST CHURCH** (Affiliated with Southern Baptist), 1185 Wheatridge Rd. at College Drive, 785-460-7144, Sunday Bible Study 9:30 a.m., Sunday Worship services, 10:45 a.m. Prayer Service at 6:30 p.m. on Wednesday's. Contemporary Evening Service at 4 p.m. through the semester.

**PLEASANT HOME CHURCH**, Pastor, Perry Baird, 785-728-7380, 3190 Road 70, Edson, Worship, 9:00 a.m., Sunday School 10:00 a.m. (MST)

**MINGO BIBLE CHURCH**, 420 Main Mingo, 785-462-2992: An independent community church served by Village Missions Pastor Tom Peyton. Sunday School: 9:30AM - all ages. Worship Services: 10:45AM. Sunday Evenings 6:30. First Sunday of month - carry-in dinner following morning worship.

**SACRED HEART CATHOLIC**, 785-462-2179, Father Dana Clark, Pastor, Saturday Eve. Mass 5:30 p.m., Sunday Masses 8:00 & 10:00 a.m., Confessions will be heard Saturday 4:30-5:05 p.m. and from 7:30-7:45 a.m. and 9:25-9:40 a.m. on Sunday.

**FIRST PRESBYTERIAN CHURCH**, Reverend Andrew Sonneborn, 515 W. 4th, 785-462-6342, Sunday Worship 9:00 a.m.

**THE SHEPHERD'S STAFF, REXFORD**, Joan Dingwerth, Director, 785-687-2565.

**WESLEYAN CHURCH**, 320 W. Pine - 785-462-8391, Sunday School 9:30 a.m., Sunday Worship 10:40 a.m., Sunday Evening Cell groups at 6:00 p.m., Wednesday Youth Ministries, Kids Clubhouse 7 p.m.

**CHURCH OF JESUS CHRIST OF LATTER-DAY SAINTS**, 1145 S. Franklin - 785-460-6605, President Andy Rose, 785-460-6807. Sacrament meeting 10 a.m., Sunday School and Primary 11:20 a.m., Priesthood, Relief Society, YM/YW, 12:10 p.m.; Family History Center open by appointment. Call 785-462-3571.

**REDEEMING LOVE MINISTRIES, INC.**, 345 N. Franklin, Dr. W. G. and Rev. Orvella Romine, Equipping Class, Sunday, 9 a.m., Sunday worship, 10 a.m., Wednesday, R.L.M Training Centers (Bible School), 6 p.m. Shop online at: www.rimregionalchurch.com.

**COLBY UNITED METHODIST CHURCH**, Rev. James Mardock, pastor, 950 S. Franklin, 785-460-6521, Sunday Worship Services at 8:30 and 11:00 a.m., Fellowship coffee 9:30 a.m., Sunday School, 9:45 a.m., KXXX broadcasts 11:00 worship. www.colbyumc.org

**CHURCH OF CHRIST**, 510 E. 4th, Sunday Bible Study 9:30 a.m., Sunday Worship 10:30 a.m., www.colbychurchofchrist.com

**OUR SAVIORS LUTHERAN CHURCH**, 217 Main St., Brewster, 785-694-2751. Sunday worship 10:00 a.m.

**FIRST CHRISTIAN CHURCH**, (Disciples of Christ), 385 W. 3rd - 785-460-2718, Sunday Morning Worship and Children's Church at 10:00 a.m.

**TRINITY LUTHERAN CHURCH**, Rev. Robert Alexander, East 5th & Country Club, 785-462-3497, Services, Sat., 5:30 p.m., Sunday Worship Service 10:30 a.m., Adult Bible Class & Sunday School 9:15 a.m. Visit us at www.trinitycolby.com.

**LEVANT COMMUNITY CHURCH**, 205 1st St., Pastor Josh Moss, 785-586-2376, Sunday School (classes for 3 years & up and 3 adult classes) 9:30 a.m., Morning worship 10:30 a.m.

**BREWSTER UNITED METHODIST CHURCH**, PO Box 250, Brewster. Pastor Mike Baughn, 785-694-2278, Sunday School: 9:45 a.m.; Worship Service, 10:45 a.m.

**REXFORD COMMUNITY CHURCH**, Rexford, Pastor Lane Purcell, 785-687-3305, Sunday School 9:30 a.m., Worship Service 10:30 a.m.

**BREWSTER COMMUNITY CHURCH**, Mike Pinkelman, Pastor, Brewster - 785-694-2720, Sunday School (adults) 9:30 a.m., Worship Service 10:30 a.m., Children's Sunday School 11:15 a.m. Bible Study 7:00 p.m., Wed. 7:00 p.m. Children's Ministries (Royal Rangers/Missionettes), Wed. 7:15 p.m. - Intercersory & Prayer, Tue. 5:30 p.m. - Women's Bible Study.

To become a sponsor call Kathryn or Sharon today at 462-3963.





## Other Viewpoints

# Department audits hurt instead of help

The Kansas Department for Children and Families has found a new way to make life difficult for struggling families and the agencies that help them.

Children and Families has been conducting aggressive audits of Early Head Start programs. The preliminary audit reports recommend that the department force 12 programs to repay about \$650,000 in grant money – not because of fraud or waste but because of accounting issues such as missing forms (even when those forms don't exist).

The harassing and uncertain nature of the audit was one reason why Wichita-based Child Start, one of the state's largest child-development programs, decided earlier this year not to reapply for nearly \$1 million in state grant funding. As a result, about 90 area children are no longer in the program.

"I've never seen anything like this," said Teresa Rupp, who has been executive director at Child Start for 31 years.

Early Head Start supports low-income families with pregnant women, infants and toddlers. It is federally funded, with some programs receiving state-administered grants, and is regularly audited. Rupp said that the federal government conducts a full independent audit of Child Start every year.

In December 2011, Children and Families decided to change the scope of its own audits. Now it is examining every transaction and virtually every time sheet and form.

"It is kind of like going after a fly with a sledgehammer," Rupp told *The Eagle* editorial board.

The auditors recommended that Child Start be required to pay back almost \$85,000, primarily because it didn't have written approval from the department to spend more on home visitations than was originally planned. Rupp said that Children and Families approved the expenditure.

"We called DCF and asked if there was a form we needed to fill out, and they said 'no,' that as long as we let them know, that was enough," she told the Kansas Health Institute News Service.

Other Early Head Start programs have received similar notices. A Topeka program was notified that hundreds of thousands of dollars in funding might be withheld because it changed some job titles without notifying the department.

"We're talking about the same people with the same responsibilities, working the same hours with the same funding stream – but with different titles. And they were all disallowed," the program's director told KHI News Service.

A Department of Children and Families spokeswoman said the agency has an obligation to taxpayers "to ensure that funds are being used as intended." So far, it has spent \$222,000 on the audits. But KHI News Service noted that some in the Head Start community think the audits are connected to the Legislature's rejection of Gov. Sam Brownback's 2011 proposal to eliminate state funding for Early Head Start – a claim the department denies.

The audits do fit a pattern. In recent years, Children and Families has raised eligibility requirements for receiving welfare and food stamps, turned down federal funds aimed at helping needy Kansans, and intimidated agencies that challenged it.

The audits are the latest example of the department treating providers and the people they serve as if they were crooks.

– *The Wichita Eagle, via the Associated Press*



"AND HERE WITH A REPORT ON THE EBOLA VIRUS..."

# Photo contest gets personal at art show

For several years now, my husband Jim's greatest desire has been to beat his friend, David Pabst, in the photography division of the High Plains Art Club's yearly art show. David is a talented photographer and usually wins the photography contests he enters.

Last year David entered some nice photographs, but he was beat out by his own wife, Linda, with her entry of the old-fashioned process of gathering hay called, "Hay Day." Linda received first place, David came in second, and Jim came along with a judge's merit award – sort of like third place.

This year, Jim finally got his wish, he came in first with his entry, "Colorado Whitewater," and David got second with the photo of his horses pulling his chuck wagon, called, "Open Range." They were probably both lucky though, because Linda Pabst didn't enter this year. I'm guessing she will leave them both in the dust next year if they don't get out there and start shooting some new photos.

Jim's photograph was taken somewhere around Aspen, Colo. I liked that picture so much that I had it printed on the front of my new book, "Secrets of Roberts Mountain." It was perfect with my story about a 13-year-old boy who fell in a Colorado whitewater river. I couldn't have asked for anything better.

Someone asked me if that made Jim a professional since he had been published. I answered, "I doubt it, he didn't get paid." And guess what? He isn't going to be paid.

*Marj Brown has lived in Colby since 1947 and has spent a good deal of that time writing about people and places here. She says its one of her favorite things to do*



**Marj Brown**

- Marj's Snippets



DAVID PABST and JIM BROWN

Jim Brown took the top photo of David Pabst and his second place photo, "Open Range," while Pabst took the photo on the right of Brown and his first place photo, "Colorado Whitewater."



# Hunting benefits all sectors of society

During the early days of our country, settlers hunted out of necessity. While farming and trading provided them with a great deal of food, it wasn't enough for sustenance. In order to survive, they hunted, fished and trapped wildlife where they lived and worked.

Today, hunting in America offers two major benefits to society: wildlife management and an economic boost.

Protecting wildlife makes sense from an environmental standpoint in today's society. This allows for future hunting seasons. Wildlife management also ensures overcrowding will be less likely.

Today, most wildlife populations continue to thrive under conservation programs put into place in the early 1900s. For example, the white-tailed deer population was a meager half a million 100 years ago. With careful conservation efforts, plentiful crops, well planned hunting seasons and reasonable limits for hunters, the population has grown to approximately 32,000,000.

Almost every other wildlife species has flourished as well. Most of these animals number in the millions today. This wasn't the case before the efforts of hunters and wildlife enthusiasts became commonplace.

Just as impressive are the numbers on the economic impact of hunting. With approximately 6 percent of the U.S. population hunting today, business is booming.

For countless small businesses in rural communities in Kansas and across this nation, hunter spending plays a major role in econom-



**John Schlageck**

- Insights

Kansas Farm Bureau

ic success.

Local shops, outfitters, hotels, convenience stores, restaurants and landowners all benefit. In 2011, nearly 13.7 million hunters spent \$38.3 billion, according to a 2011 U.S. Fish and Wildlife Service survey.

In addition to the 680,000 jobs supported by hunters, hunting generated \$11.8 billion in tax revenues for federal, state and local coffers. Wildlife agency positions are also supported by sportsmen through the purchase of hunting licenses and funds collected as excise taxes through the long-running Federal Aid in Wildlife Restoration

These sportsmen contribute on average \$8 million per day, much of which goes toward conservation efforts. Billions of dollars have been used to protect the habitats of fish and wildlife throughout the country.

Through conservation efforts, money generated and jobs created, hunting remains a positive engine in this country's economic industry. What many fail to understand about this sacred tradition is that it isn't just about the act itself.

Hunting provides the opportunity to experience nature. Some sportsmen will tell you the

best part about hunting isn't shooting; it is the peacefulness and serenity of being outdoors.

Some may even feel a connection with their ancestry while hunting. It's also an opportunity to pass such traditions to their children and friends.

For generations, families have shared these experiences and it has strengthened their relationships. It is a visceral feeling that can strengthen family bonds. Hunting remains a way of sharing in nature's beauty and the dynamic between human and animal have few comparisons in society today.

Hunting prevails as a part of our American identity. Millions of people take pride in hunting. Their experiences are much bigger than themselves and create this community called hunting.

*John Schlageck of the Kansas Farm Bureau is a leading commentator on agriculture and rural Kansas. He grew up on a diversified farm near Seguin, and his writing reflects a lifetime of experience, knowledge and passion.*

## Write us

The *Colby Free Press* encourages Letters to the Editor on any topic of general interest. Letters should be brief, clear and to the point. They must be signed and carry the address and phone number of the author.

We do not publish anonymous letters.

## COLBY FREE PRESS

155 W. Fifth St. (USPS 120-920) (785) 462-3963  
Colby, Kan. 67701 fax (785) 462-7749

Send news to: [colby.editor@nwkansas.com](mailto:colby.editor@nwkansas.com)

State award-winning newspaper, General Excellence, Design & Layout, Columns, Editorial Writing, Sports Columns, News, Photography. Official newspaper of Thomas County, Colby, Brewster and Rexford.

**Sharon Friedlander - Publisher**  
[sfriedlander@nwkansas.com](mailto:sfriedlander@nwkansas.com)

### NEWS

**R.B. Headley - Sports Editor**  
[colby.sports@nwkansas.com](mailto:colby.sports@nwkansas.com)

**Marian Ballard - Copy Editor**  
[mballard@nwkansas.com](mailto:mballard@nwkansas.com)

**Sam Dieter - News Reporter**  
[colby.editor@nwkansas.com](mailto:colby.editor@nwkansas.com)

**Heather Alwin - Society Editor**  
[colby.society@nwkansas.com](mailto:colby.society@nwkansas.com)

### ADVERTISING

**Kathryn Ballard - Advertising Representative**  
[kballard@nwkansas.com](mailto:kballard@nwkansas.com)

**Sharon Funk - Advertising Representative**  
[sfunk@nwkansas.com](mailto:sfunk@nwkansas.com)

**Kylee Hunter - Graphic Design**  
[khunter@nwkansas.com](mailto:khunter@nwkansas.com)

### BUSINESS OFFICE

Office Manager

**Melissa Edmondson - Office Manager**  
[medmondson@nwkansas.com](mailto:medmondson@nwkansas.com)

**Evan Barnum - Systems Administrator**  
[support@nwkansas.com](mailto:support@nwkansas.com)

### NOR'WEST PRESS

**Richard Westfahl - General Manager**  
Gary Stewart, Foreman

Jim Jackson, Jim Bowker, Pressmen

Kris McCool, Judy McKnight, Tracy Traxel, Mailing

THE COLBY FREE PRESS (USPS 120-920) is published every Monday, Wednesday, Thursday and Friday, except the days observed for Memorial Day, Independence Day, Labor Day, Thanksgiving Day, Christmas Day and New Year's Day, by Nor'West Newspaper, 155 W. Fifth St., Colby, Kan., 67701.

PERIODICALS POSTAGE paid at Colby, Kan. 67701, and at additional mailing offices. POSTMASTER: Send address changes to Colby Free Press, 155 W. Fifth St., Colby, Kan., 67701.

THE BUSINESS OFFICE at 155 W. Fifth is open from 8 a.m. to 6 p.m. Monday to Friday, closed Saturday and Sunday. MEMBER OF THE ASSOCIATED PRESS, which is exclusively entitled to the use for publication of all news herein. Member Kansas Press Association and National Newspaper Association.

SUBSCRIPTION RATES: In Colby, Thomas County and Oakley: three months \$35, one year \$85. By mail to ZIP Codes beginning with 676 and 677: three months \$39, one year \$95. Elsewhere in the U.S., mailed once per week: three months \$39, one year \$95. Student rate, nine months, in Colby, Thomas County and Oakley, \$64; mailed once per week elsewhere in the U.S. \$72

## Mallard Fillmore

- Bruce Tinsley



©2014 by King Features Syndicate, Inc. World rights reserved. TINSLEY 10-24



# School Activities and Menus

## Colby Public Schools

**Activities: Wednesday:** 4 p.m. coordinating council, administration building. **Friday:** varsity volleyball state tournament; 7 p.m. varsity football, Goodland. **Saturday:** Kansas Music Educators Association honor band/choir, Hays High School, E. 13th St.; Kansas Music Educators Association honor choir live auditions, Hays High, E. 13th; Kansas Music Educators Association honor jazz band, Hays High, E. 13th; varsity volleyball state tournament; varsity cross country state tournament, Wamego; 10:30 a.m. middle school wrestling, Goodland Tournament.

**Menus: Monday:** breakfast: cheese omelet, toast, orange wedge, juice; lunch: taco burger, lettuce, tomato, refried beans, Mexi-corn, strawberries and bananas. **Tuesday:** breakfast: sausage breakfast sandwich, pineapple tidbits, juice; lunch: barbecue rib on a bun, oven fries, green beans, tropical fruit, royal brownie. **Wednesday:** breakfast: scrumptious coffee cake, rosy applesauce, juice; lunch: taco soup, corn chips, salsa, broccoli, baby carrots, apple salad. **Thursday:** breakfast: pancake and sausage on a stick, sliced pears, juice; lunch: corn dog, tater tots, peas, apple sauce. **Friday:** breakfast: breakfast burrito, fruit, juice; lunch: spooky spaghetti with monster eyes, zombie fingers, bat nest, spider eggs, pumpkin pits.

**High School Lunch: Monday:** taco burger, lettuce, tomato, refried beans, Mexi-corn, strawberries and bananas. **Tuesday:** barbecue rib on a bun, oven fries, green beans, pear halves, royal brownie. **Wednesday:** taco soup, corn chips, salsa, broccoli, baby carrots, apple salad. **Thursday:** bierocks, tossed salad with spinach, green beans, mandarin oranges, fresh clementine. **Friday:** corn dog, tater tots, peas, applesauce.

### Sacred Heart

**Menus: Monday:** chicken tetrazzini, tossed salad, steamed carrots, French garlic bread, apricot halves. **Tuesday:** hamburger, bun, dark green leaf lettuce, tomato slice, tri-tater, red bell pepper strips, kiwi. **Wednesday:** beef and noodles, mashed potatoes, green beans, grapes. **Thursday:** baked chicken drumstick, savory rice, fresh broccoli, fresh cauliflower, roll, jelly, pineapple tidbits. **Friday:** fish patty, bun, sweet potato puffs, edamame, fresh pear.

### Heartland

**Activities: Friday:** 6:30 p.m. high school football at St. John's vs Cair Paravel, Salina.

### Golden Plains

**Activities: Monday:** 4 p.m. middle school scholars bowl, Rexford. **Thursday:** 7 p.m. high school football, Cheylin, Bird City. **Friday:** no school, comp day; high school volleyball State, Fort Hays State University; Halloween. **Saturday:** high school volleyball State, Fort Hays State University; middle school Music Educators Convention high school auditions.

**Menus: Rexford: Monday:** breakfast: grilled cheese; lunch: chicken-fried steak. **Tuesday:** breakfast: pancake; lunch: chicken a la king. **Wednesday:** breakfast: scrambled eggs; lunch: Italian dunkers. **Thursday:** breakfast: turnovers; lunch: soft-shell taco.

**Selden: Monday:** breakfast: burrito; lunch: ham and cheese pocket. **Tuesday:** breakfast: pumpkin breakfast cookie; lunch: pizza. **Wednesday:** breakfast: biscuits and gravy; lunch: chicken. **Thursday:** breakfast: sausage and biscuit; lunch: goulash.

### Brewster

**Activities: Monday:** 4 p.m. junior high scholars bowl, Rexford. **Thursday:** 7 p.m. high school football, Grainfield. **Friday:** Halloween. **Saturday:** high school state cross country, Wamego.

**Menus: Monday:** breakfast: cinnamon roll, mandarin orange

es; lunch: lasagna, bread sticks, green beans, salad, fruit. **Tuesday:** breakfast: waffles, pineapple; lunch: chicken patties, mashed potatoes, cooked carrots, broccoli, roll. **Wednesday:** breakfast: breakfast pizza, mixed fruit; lunch: ham and cheese sandwich, fries, fresh veggies, fruit, chocolate chip cookie. **Thursday:** breakfast: scrambled eggs, kiwi; lunch: pepperoni pizza, salad, fruit, baby carrots. **Friday:** breakfast: blueberry muffin, fruit; lunch: taco burger, refried beans, chips, corn.

### Colby Community College

**Activities:** 50th Anniversary Homecoming Week Activities. **Tuesday:** 7:30 p.m. volleyball vs. Barton Community College. **Thursday:** 7 p.m. Talent Show, Cultural Arts Center. **Saturday:** Homecoming Hall of Fame Reception; 5:30 p.m. Garden City vs. Northwest Kansas All Stars men's basketball; 7:30 p.m. men's basketball vs. K-State Salina, Colby Community Building. **Sunday:** 5:30 p.m. Garden City vs. K-State Salina men's basketball, Colby Community Building; 7:30 p.m. men's basketball vs. Northwest

Kansas All-Stars, Colby Community Building.

### Triplains

**Activities: Monday:** school in session; 4 p.m. junior high scholars bowl, Golden Plains; 4 to 5 p.m. Book Fair. **Tuesday:** 1:15 p.m. grade school pumpkin decorating; 3:30 p.m. senior class meeting; 4 to 7:30 p.m. parent-teacher conferences; 4 to 7 p.m. book fair. **Wednesday:** 8 a.m. pic-

ture retakes; 9:41 a.m. Red Cross representative will visit with high school students; 4 to 5 p.m. book fair. **Thursday:** Kay Club Halloween party for kindergarten through fourth grades; 2:30 change into costumes; 2:45 parade through school; 3 p.m. games; 3:30 refreshments; 3:50 return to classroom; 4 to 5 p.m. book fair; 7 p.m. high school football at Grainfield vs. Wheatland-Grinnell. **Friday:**

no school; 8 to 11:30 a.m. parent-teacher conferences.

**Menus: Monday:** piggies. **Tuesday:** chicken. **Wednesday:** pizza. **Thursday:** meatballs.

Send us your calendar and menus. E-mail colby.society@nwkansas.com or mail Colby Free Press, 155 W. Fifth, Colby, Kan., 67701.

## Senior Progress Center

Friday the Senior Progress Center activity will be a Halloween party.

**Activities for the week: Monday:** 11 a.m. bingo. **Tuesday:** 10 a.m. exercise; 10:30 a.m. canasta. **Wednesday:** snack day. **Thursday:** 10 a.m. exercise; 10:30 a.m. pinochle. **Friday:** 10 a.m. exercise; 11 a.m. Halloween party.

**Menus for the week: Monday:** hamburger, tater tots or tri-taters, mixed vegetables, cook's choice fruit. **Tuesday:** chicken a la king, green beans, mandarin oranges, biscuit, pudding. **Wednesday:** beef stroganoff, broccoli-cauli-

flower salad, noodles, fruit crisp. **Thursday:** cook's choice entrée, hash brown casserole, corn, rosy applesauce. **Friday:** ham and beans, coleslaw with carrots, cornbread, apricots.

The Thomas County Nutrition Center invites anyone 60 and

older and guests to lunch Monday through Friday at the senior center. Home delivery is available, as is pick-up service. A contribution of \$3.25 per meal is suggested for seniors, \$6 for others.

Make reservations at (785) 460-2901 by noon the day before.







## Red Barn

**Activities for the week: Sunday:** Rhelda Dible's birthday. **Monday:** 2 p.m. Barnswallows. **Tuesday:** Betty Nickols' birthday. **Wednesday:** 10 a.m. ladies' Bible study; Wes Bencken's birth-

day. **Thursday:** 2 p.m. Come On Down chicken-foot dominoes; Fran Leach's birthday. **Friday:** 9:30 a.m. Koffee Klatch; 2:30 p.m. Stitch and Chatter; Halloween.

## Just In On-Trade & Off-Lease!

Pre-Owned Units in Excellent Condition!

 <p>2013 GMC Sierra 1500 SLT</p> <p>Gray, Leather, 32,897 miles</p>	 <p>2010 Dodge Caliber Express</p> <p>White, Cloth, 47,668 miles</p>
 <p>2014 Chevrolet Cruze 2LT</p> <p>Red, Leather, 17,730 miles</p>	 <p>2014 Buick Encore Convenience</p> <p>Maroon, Cloth, 21,369 miles</p>
 <p>2012 Ford Fusion SEL</p> <p>White, Leather, 26,080 miles</p>	 <p>2012 Ford Fusion SE</p> <p>Black, Cloth, 22,665 miles</p>

**FINLEY MOTORS, INC.** GMC  
1520 Highway 27, Goodland, KS • www.finleymotorsinc.com • "Your volume & variety dealer!"

## WOOFER PUMP & WELL INC.

1024 Oak Ave.  
Hoxie, KS 67740

Office Phone 785/ 675-3991 Fax: 785/ 675-3990  
Shop Phone 785/ 675-3023 E-mail: woofpw@ruraltel.net

## Irrigation, Domestic, Geothermal & Environmental Services

- Irrigation Pump Repair
- Irrigation Well Drilling
- Domestic Well Drilling & Repair
- Environmental Drilling
- Windmill Repair
- Solar Systems
- Geothermal Pump Systems

For all your irrigation needs call:  
Lance Shepard (785) 675-8376



## Kiss Unwanted Items Goodbye



Sell them in the Classifieds  
**785-462-3963**

## ATTENTION

- Fact: it's vitally important that every eligible voter have their voting identification in order in time to vote on November 4th.
- Fact: For voting information go to www.electioncenter.ksdp.org or call the election hotline at 1-844-560-7474.
- Fact: Over 20,000 names are still in suspension from the August Primary; many are names of people who had voted before, but lacked photo ID or other proof of voting rights.
- Fact: Anyone and everyone who pays property tax is affected by who gets voted into the Governor's seat this November.
- Fact: Governor Brownback has experimented with the tax breaks for the rich to the point of causing a property tax crisis, particularly in Northwest Kansas counties.
- Fact: Rural counties of Northwest Kansas have experienced the largest tax increase of any other area in the state, as much as 30 percent in some taxing districts in these counties.
- Fact: Schools, rural hospitals, community issues, Medicare, Medicaid highways and services are at risk.
- Fact: Over 190,000 Kansas businesses were exempted from paying Kansas Income Tax last year causing a reverse Robinhood effect ... rob from the poor to give to the rich.
- Fact: If there was a city in Kansas named Poverty, it would be the largest city in the state. Yes, even larger than Wichita.
- Fact: While the 190,000 businesses in Kansas paid no state income tax, the hourly wage earner who works for those corporations and businesses, however, did pay their fair share of Kansas income tax.
- Fact: Actual figures show that over the past three years property taxes in rural counties have increased three times faster than in the large urban counties.
- Fact: Property taxes for public schools grew over five times faster in rural Kansas over the past three years.
- Fact: School district property taxes in Sherman, Wallace and Logan counties have a 30 percent increase while Thomas County is presently standing between 20 and 30 percent increase.
- Fact: When measured against changes in the cost of living, funding for educational programs that can actually be spent on student support programs, teachers and administrators has declined by \$500million since 2009.
- Fact: The huge tax cut experiment has left the state school funding budget in a dire state.
- Fact: Colby School District 315 since the beginning of the 2008/2009 school year has experienced cuts of 18 staff members, reduced instruction time for gifted students, Home Economics and Woods, eliminated in town busing, cut back textbook and technology purchases and elimination of the Thomas County Academy.
- Fact: Colby School District currently has one teacher to every 17 students, compared to 1 teacher to every 12 students before the tax cuts for the wealthiest.
- Fact: Colby School District has closed one kitchen and cut food service staff, yet food service costs have gone from \$441,000 to \$507,000 because everything the school purchases has gone up, even though state aid has gone down.
- Fact: State funding per pupil has gone from \$4433 per student in 2009 to \$3852 per student for 2014/2015.
- Fact: School funding operating budget was previously funded 69 percent by state/federal funds in 2008 and has now dropped to 57 percent.
- Fact: Six of the State Aid payments received by USD 315 last year bore the notation, "Highway Fund."
- Fact: Property taxes are the only likely path in order for schools and public services to survive.
- Fact: Kansas rates # 42 in the nation for teacher pay.
- Fact: Everything begins with education... from knowing how to read a ballot to knowing how to be a doctor, a researcher, educator or scientist, etc. None of it can happen without education.
- Fact: Kansas has been well known for having good schools and good colleges.

Storage | Farm Shop | Farm Office | Seed Storage

## Fully Depreciate Your Next Building in 5-10 Years & Save



## Introducing Morton's Exclusive Lease Financing Program

Leasing is a way to make improvements to your property and receive the benefits of faster deductions compared to depreciation. Essentially this equates to more money in your pockets.

**Minimize capital outlay:** You don't pay a dime until your building is complete and ready for use.

**Maximize your tax position:** Your payments are fully deductible and allow you to deduct more than a standard schedule.

**Own your building:** At the end of the lease you will purchase and own your Morton building.

Contact us today about this program & save on your next Morton building

Consult your tax advisor for more information. Certain restrictions apply. ©2014 Morton Buildings, Inc. A listing of GC licenses available at [mortonbuildings.com/licenses](http://mortonbuildings.com/licenses).



785-462-7505  
[mortonbuildings.com](http://mortonbuildings.com)

Paid for by Vera Sloan and Rosalie Seemann



# BUSINESS DIRECTORY

**TO HAVE YOUR AD PLACED IN THE BUSINESS DIRECTORY CALL KATHRYN OR SHARON TODAY AT (785)462-3963**

**THIS COULD BE YOUR AD! Call Today! 785-462-3963**

**Mobile Home Lots for Rent**  
 \$190 Month (includes water, sewer & storage shed)  
**FREE** Month with approved application  
**Friendly Acres Mobile Home Park**  
 1150 S. Franklin, Colby  
 Call 785-462-6445

**New Beginnings Counseling Services**  
**J. Douglas Finley, LCSW**  
 422 Smith Drive, Colby  
**FIRST SESSION FREE**  
 785-462-3308  
 Immediate Appointments In Office or Virtual

**Dr. Tom Barlow DENTIST**  
 785-460-7538  
 Appointments Readily Available  
 505 H N. Franklin, Colby

**LASERS BY TALIA**  
 LOOK BETTER, FEEL BETTER  
 We now have **Obagi Medical skin care, and BOTOX is coming soon!**

- Laser hair removal
- Ultrasonic slimming
- Teeth whitening

Mon. & Wed.: 12-6 p.m.  
 Tuesday, Thurs., Fri.: 8AM-5PM  
 Appointments also available after hours.  
 1580 Rose Avenue  
 Burlington, CO 80807  
**Phone: (719) 346-4640**




**Laura Barger Massage Therapist**

*Prenatal Massage Sports Massage*      *Swedish Massage Hot Stone Massage*

Available For Appointments in Colby, Atwood and McCook  
 220 N. Mission Ridge, Colby      Laura Barger  
 www.LauraBargerLMT.com      Licensed Massage Therapist  
 la\_barger@hotmail.com      (308) 882-0029

**LINDSEY D. MOORE**  
 Attorney at Law, General Practice  
 330 N. Lake Ave. | P.O. Box 627  
 Colby, KS 67701  
 moorelaw@st-tel.net  
 Phone No. (785) 460-0591  
 Fax No. (785) 460-0595



**ROOFMASTERS**  
 Serving Colby for over 30 YEARS!  
 425 East Hill, Colby, KS  
 785-462-6642

<b>RESIDENTIAL</b> Heritage Shingles Wood Shingles IR Shingles Stone Coated Steel Metal Panels	<b>COMMERCIAL</b> EPDM Rubber White TPO Single Ply Modified Systems Built up Systems Elastomeric Coating
---	---

Licensed Bonded Insured  
**FREE ESTIMATES**  
**WHO YA GONNA CALL?**

**Nancy LePell Bookkeeping**  
 165 East 3rd - Colby, KS 67701  
 785-462-7428

Income Tax Preparation - Individual, Business and Estates  
 Accounting and Bookkeeping  
 Business and Financial consultation

Christy Griffith, RTRP      Nancy LePell, EA, ChFC, CB  
 Working to bring you the best possible solutions

**SPECIALIZING IN CUSTOMIZED STEEL AND POST FRAME BUILDINGS**

**We will beat ANY Northwest Kansas competitor's price on a comparable project!!**

605 North 10th Street | Atwood, KS 67730 | vapconstruction.com | 866-492-1978




**Colby Salvage Metal Co., Inc.**  
 1150 PLAINS AVENUE, COLBY, KANSAS

1-800-631-2711      785-462-2711

GLENN GRIFFIN      LUCAS MOORE      TRACY GRIFFIN

*Buying Non-ferrous Metals and Recycling in the Tri-State Area Since 1967*





**NEW SYSTEM PROFESSIONAL WINDOW CLEANING**  
**(785) 462-6995**  
**(800) 611-6735**  
 www.MyWindowCleaner.net  
 Serving Colby since 1992!  
**Commercial • Residential • Free Estimates**



What's precious to you is precious to us.<sup>SM</sup>  
**Auto. Home. Life. Retirement.** They all matter, so wrap them all in a blanket of Nationwide<sup>®</sup> protection. We put members first, because we don't have shareholders.<sup>SM</sup>

**Join the Nation that knows what's important.**  
 Combine your policies and save up to 25%

**Shirley D Skolout**  
 Mountain Plains Agency  
 Phone: (785)460-6284  
 skolost@nationwide.com

**Coverage & Service You Can Count On**

Farming is your livelihood and no one understands that better than Farm Bureau. Our companies were originally founded 74 years ago to serve the needs of farmers. Today you can continue to rely on us to be your one-stop resource for protecting what matters most – your operation, family and future.

**Vernon Hurd**  
 550 N. Franklin Ave.  
 Colby, KS  
 785-269-9511  
 www.VernonHurd.com

Call today to see how I make insurance simple.

**FARM BUREAU FINANCIAL SERVICES**

Auto | Home | Life | Annuities | Farm/Ranch | Commercial Ag | Crop | Business

Securities & services offered through FBL Marketing Services, LLC, 5400 University Ave., West Des Moines, IA 50266, 877/850-2904, Member SIPC, Farm Bureau Property & Casualty Insurance Company, Western Agricultural Insurance Company, Farm Bureau Life Insurance Company, West Des Moines, IA. \*Affiliates \*Company providers of Farm Bureau Financial Services PC055-ML-1 (4-13)

**KANSAS Insurance INC**  
 Formerly THOMAS county INSURANCE AGENCY

**Dennis Tubbs**  
 dtubbs@kansasins.com

490 N. Franklin  
**785-462-3939**

- Home & Auto
- Farm & Crop
- Business Insurance
- Boat, Motorcycle, RV

**Nationwide Agribusiness**  
 On Your Side<sup>®</sup>

www.kansasins.com



**One combined policy + One deductible for it all**  
**One big sigh of relief**

When things go wrong, you need your insurance to go right. Contact me to see how our **one deductible advantage** can help provide you peace of mind when you need it most.

**David Browne III**  
 550 N Franklin Ave  
 Colby, KS 67701  
 785-462-3388

**FARM BUREAU FINANCIAL SERVICES**  
 Insurance • Investments

Auto | Home | Life | Business | College | Retirement

The deductible per occurrence. Securities & services offered through FBL Marketing Services, LLC, 5400 University Ave., West Des Moines, IA 50266, 877/850-2904, Member SIPC, Farm Bureau Property & Casualty Insurance Company, Western Agricultural Insurance Company, Farm Bureau Life Insurance Company, West Des Moines, IA. \*Affiliates \*Company providers of Farm Bureau Financial Services PC055-ML-1 (4-13)

**Langer Industrial Service**  
 2022 County Road 11 • Levant, KS 67743 • 785-586-2208  
 Monday - Friday 8 a.m. - 5 p.m.

**We pay cash up to for all scrap metal\***

- Brass • Copper • Aluminum • Batteries • Electric motors • Cars
- Combines • Farm Equipment • Prepared/Unprepared Iron and Tin
- Container Service • Off site baling and car crushing
- Limited pickup service available

*Schedule deliveries after normal business hours by appointment when necessary.*  
 \* Some Conditions Apply

**C.W. Beamgard Co. Inc.**

 SALES & SERVICES SINCE 1919

- New Vehicle Sales
- Service
- Used Vehicle Sales
- Windshield Pit Repair
- Parts
- Tires
- Accessories
- Towing Service

Monday - Friday 8-6, Saturday 8-Noon  
**785.626.3286**  
**Fax 785.626.3717**  
 210 State St. • Atwood, KS 67730

**Meadow Lake Restaurant & Lounge**

• Open to the Public •  
**Monday Nights \$1 Draws**  
**Saturday Nights Prime Rib**

*Our kitchen is open Mon - Sat, 5 - 9 p.m.*

**MEADOW LAKE**  
 GOLF COURSE & RESTAURANT  
**785-460-6443**  
 1085 E Golf Club Rd. • Colby, KS




**MURRAY ROOFING & CONSTRUCTION**

RESIDENTIAL • COMMERCIAL • INDUSTRIAL

**Residential:**  
 • Roofing  
 • Construction  
 • Remodels  
 • Blown in Insulation

**Commercial:**  
 -TPO, EPDM, Duro-Last, Modified, Fibered and Non-Fibered roof coatings.

**THE WORLD'S DURO-FAST BEST ROOF**  
 Elite Duro-Last Contractor

Fully Insured, Bonded, Licensed and Covered by workman's Comp.  
**Office: 785-462-6908**  
 Owner: 785-443-1339

CHECK OUT OUR WEBSITE FOR MORE INFORMATION:  
**www.MurrayEnterprises.org**

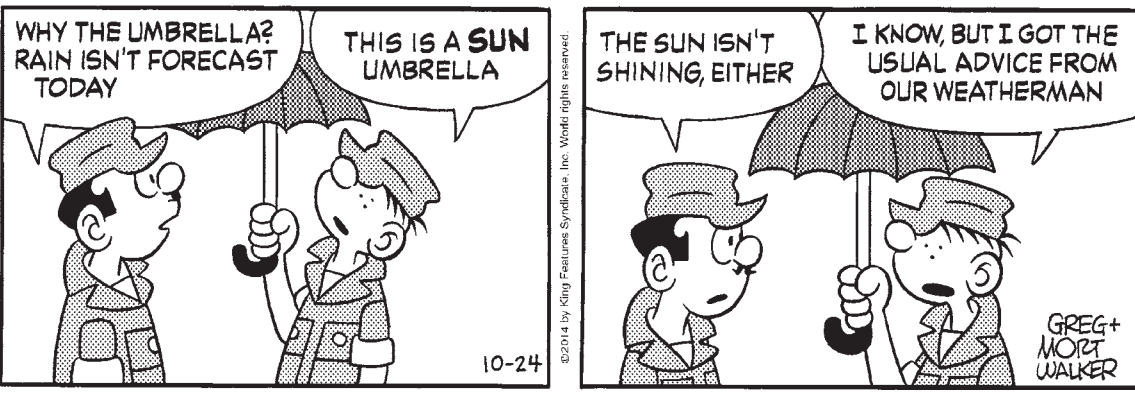





**Baby Blues** • Rick Kirkman & Jerry Scott



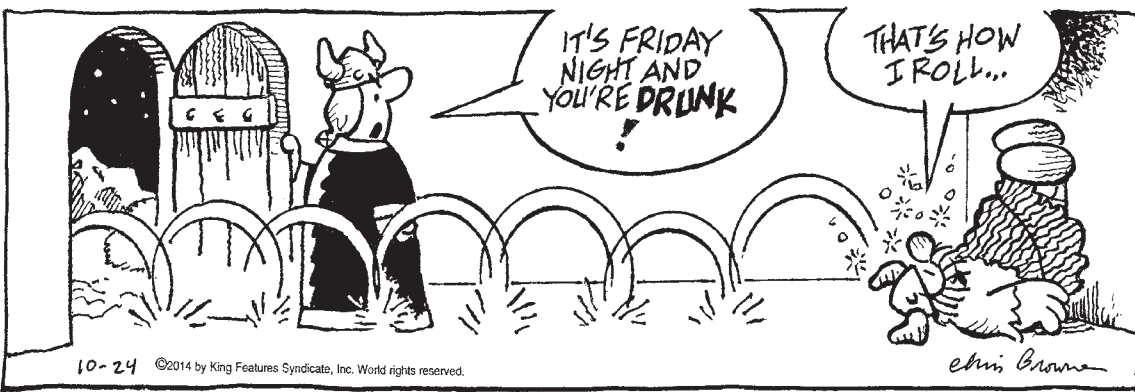
**Beetle Bailey** • Mort Walker



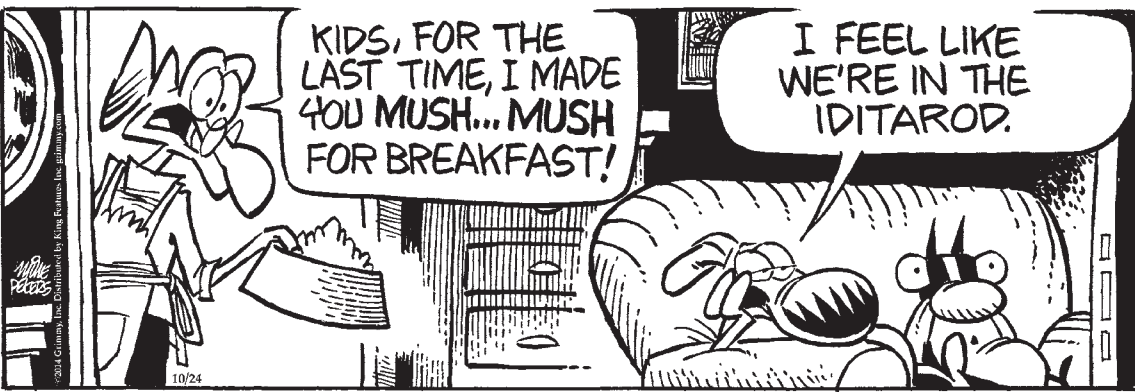
**Blondie** • Chic Young



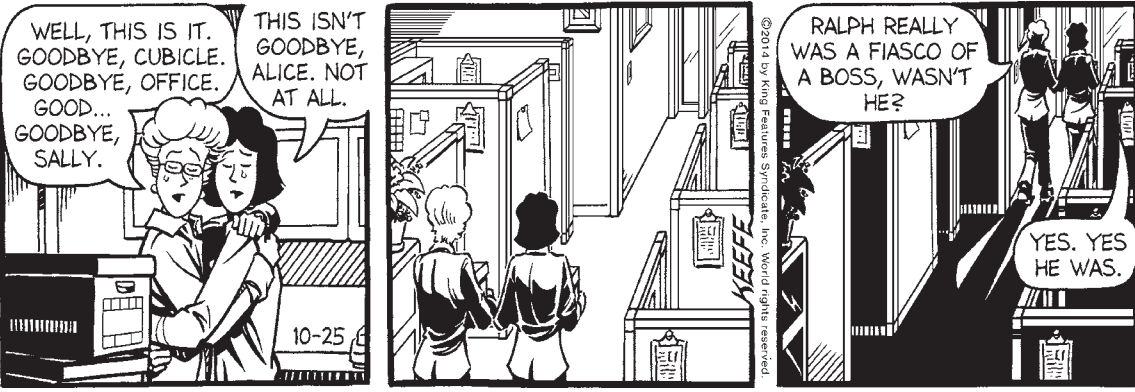
**Hagar the Horrible** • Chris Browne



**Mother Goose and Grimm** • Mike Peters



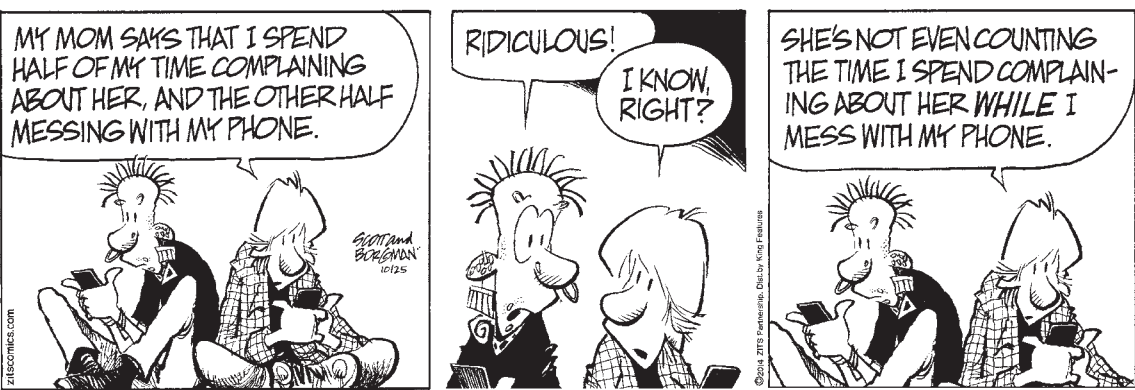
**Sally Forth** • Greg Howard



**Todd the Dinosaur** • Patrick Roberts



**Zits** • Jim Borgman & Jerry Scott



**Heloise**

- Hints from Heloise

**Leftover candy can be stashed**

Dear Readers: Halloween is almost here, and many of you will have some candy left over. Unless you are going to eat it all at once, here are some hints to store it for a nibble later on: (There are several go-to types of candy handed out at Halloween, and each has a slightly different storage hint and time.)

- Hard candies, like lollipops, can last up to a year.
- Dark chocolate (which I love and, when on sale, really stock up on!) can last longer than a year or so, even two years, so they say. It must be wrapped in foil and placed where it's dark (no direct sunlight) and pretty cool.
- Milk and white chocolate have a shorter "life span" because the ingredients, which usually are milk solids, cocoa butter, sugar, etc., only keep for less than a year.

Store candy in a cool place, like the pantry or an out-of-the-way cupboard. Don't mix different types of candies, especially a hard candy with a soft one that may give off moisture. — Heloise

**SEND A GREAT HINT TO:**  
Heloise  
P.O. Box 795000  
San Antonio, TX 78279-5000  
Email: Heloise@Heloise.com

**REUSE AIR FILTERS**  
Dear Heloise: In the hot San Antonio summers, we go through two air filters per month. I "recycle" these by putting them under my 1963 Chevy C10. It's a great truck, but leaks a few drops here and there. The filters absorb every drop and keep the garage floor clean. — Mark C. in San Antonio  
"Recycle and reuse" is my motto, and this hint does both! I tested it on several types of AC filters, and it worked for most. The cheaper (and less dense) ones bought at the grocery store did not hold up — the oil just sort of soaked through. So test one, or put a large piece of aluminum foil underneath to protect the floor. — Heloise

**TRAVEL HINT**

Dear Heloise: I bought a fragile, glass Christmas ornament on a trip, but it wasn't in a box. At the hotel, I found a plastic bottle, cut off the top and inserted the ornament, wrapped in tissue. The ornament survived the airline baggage handlers. — Frances in Kingwood, Texas

**RECYCLED PLANTERS**

Dear Heloise: Every spring, I buy annuals to plant in containers and use large household coffee containers, sugar, jumbo spice containers from a local restaurant, etc.

As the plants died off, I would scrub out the containers that were worth saving. This year, I filled all the containers into a large garbage can, lidded it with soapy water and let it soak overnight. Minimal scrubbing and a quick rinse, and they are ready for next year. — Frank N., Cranford, N.J.

**STORING LUGGAGE**

Dear Heloise: I place a scented fabric-softener sheet inside my luggage when storing it, especially if it will be stored for a long time. — Susan, via email

(c)2014 by King Features Syndicate Inc.

**Bridge** • Steve Becker

You are South, both sides vulnerable. The bidding has gone:  
West North East South  
1 ♣ Pass 1 ♦ ?

What (if anything) would you bid with each of the following five hands?

- ♠ AQJ6 ♥ KJ93 ♦ A872 ♣ 10
- ♠ AQ ♥ K84 ♦ Q93 ♣ KJ852
- ♠ J9543 ♥ Q ♦ AK7 ♣ Q865
- ♠ AJ8 ♥ AQ6 ♦ KJ3 ♣ QJ94
- ♠ KQ862 ♥ KQJ54 ♦ A9 ♣ 2

**Bidding Quiz**

1. Double. With some 15-point or better hands, you might not have a convenient way to enter the auction, but you have no such problem here. The double tells partner that you have a hand of at least opening strength and support for both unbid suits — which is exactly what you have. Partner will choose whichever major suit he prefers and relieve you of any guesswork as to which suit to bid.

2. Pass. Again you have 15 points, but this time you can't double because you don't have sufficient support for the unbid suits. Furthermore, West's club bid has taken a lot of starch out of your hand, since your club honors are badly placed. It is therefore too dangerous to do anything but pass.

3. Pass. There is some temptation to bid one spade, but with such a weak suit you might get your head chopped off by a double. Overcalls are normally based more on tricks than points, and you don't have many tricks here.

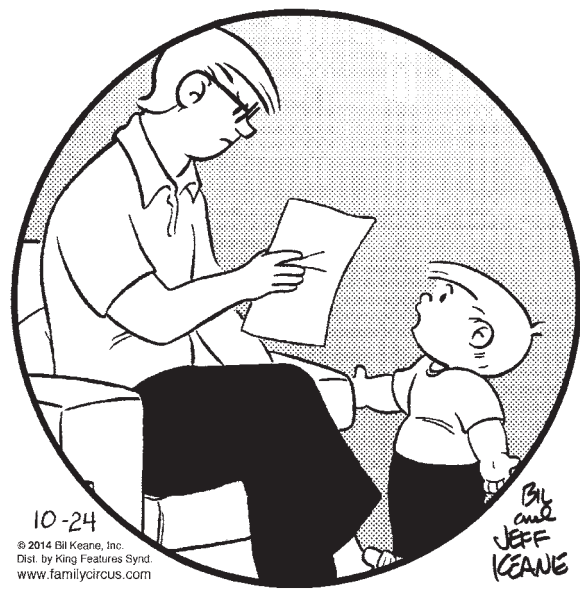
4. One notrump. The only question here is whether to double or bid one notrump. A one-notrump overcall shows 15 to 18 points, balanced distribution and stoppers in the opponents' suits — precisely what you have. A double would suggest distributional values, which you lack. Game is unlikely, but the partscore is worth fighting for.

5. One spade. Here the plan is to bid both suits in normal fashion (higher-ranking suit first). It is true that a double might locate the proper trump suit more quickly, but there is also a danger that the bidding will climb too high and too fast in one of the minors, and you could find yourself bucking a high-level contract before bidding either of your suits.

With two long suits and a good hand, you usually do best by bidding one of them instead of doubling for takeout, with the intention of bidding your second suit at your next turn.

(c)2014 King Features Syndicate Inc.

**Family Circus** • Bil Keane



"Look at the bright side. I have all sorts of room for improvement."

**Conceptis Sudoku** • Dave Green

9		6	8	1	4			
	7							
5			7				6	
3								8
	4		9		5			
6								9
	4		1					6
					3			
8	1	7	2					5

Difficulty Level ★★★

10/24

This is a logic-based number placement puzzle. The goal is to enter a number, 1-9, in each cell in which each row, column and 3x3 region must contain only one instance of each numeral. The solution to the last Sudoku puzzle is at right.

9	7	3	2	8	5	6	1	4
5	4	8	6	1	9	3	7	2
6	1	2	4	7	3	5	9	8
3	6	1	5	2	4	7	8	9
7	5	4	8	9	6	1	2	3
8	2	9	7	3	1	4	6	5
4	9	5	1	6	8	2	3	7
1	8	7	3	5	2	9	4	6
2	3	6	9	4	7	8	5	1

**Cryptoquip**

AF WKFMX SJJ ADW ASLR

FSLMFR UEMFP YTPDMV S

KLDNFP JDUE, YTX XAFM ASR

MEXADMV XE NASTGGFTL DX

Yesterday's Cryptoquip: THAT MAN INSTINCTIVELY UNDERSTANDS MANY ARCTIC NATIVES. YOU COULD SAY HE INTUITS INUITS.

Today's Cryptoquip Clue: A equals H

**Crossword** • Eugene Sheffer

- ACROSS**
- Piglet's parent
  - General on a Chinese menu
  - Harassed
  - Part of N.A.
  - Claire, Wis.
  - Upper crust
  - Sermon subject
  - Solving procedure
  - Coop occupant
  - Artist Frida
  - Mideast nation
  - 1959 Kingston Trio hit
  - Characteristic carrier
  - Sea urchin, re 1-Down
  - Man
  - Japanese-American
  - Greedy one's call
  - Censors, in a way
  - Youngster
  - Family
  - Fleming milieu
- DOWN**
- Region
  - Knee support
  - Treasure seeker's aid
  - Math exponent
  - out (supplement)
  - Claire, Wis.
  - Locale for sweaters?
  - Allen or Tebow
  - "Goshi!"
  - Wood nymph
  - Verily
  - Commercials
  - Like to, in kid-speak
  - Ship-building wood
  - 7-Down's makeup, maybe
  - to (should)
  - Long lunch
  - Allen or Tebow
  - 55 "Goshi!"
  - Wood nymph
  - Verily
  - Commercials
  - 17 Scandina- navian man's name
  - Hive head
  - Show-ness
  - Shade provider
  - Pierre, e.g.
  - Ram's mate
  - Chill in the air
  - Id coun- terpart
  - Peacock's home?
  - Under the weather
  - Red or Black
  - iPhone voice
  - Computer nerd
  - Slyly spiteful
  - Last letter
  - Un- draped
  - Tools for duels
  - Actor Pitt
  - Austen heroine
  - "Acid"
  - Scully need
  - Larry the Cable —
  - Literary collection

Yesterday's answer 10-24

1	2	3	4	5	6	7	8	9	10	11
12			13				14			
15			16				17			
18			19							
20			21				22			23
24			25				26			
27			28				29			30
31	32	33					34			
35					36		37			
38					39		40			41
42					43		44			
45					46		47			
48	49	50	51				52			
53					54		55			
56					57		58			



# Classifieds

To place your classified ad, mail (155 W. Fifth), fax (785-462-7749), phone (785-462-3963), or stop by our office at 155 W. Fifth

## Notices

**Starting Oct. 29** I will be accepting appointments at The Salon at Gigis, located at 175 W. 3rd, Colby 785-460-1999. Thank you to those who I have had the pleasure of servicing at The Carousel and hope to see you at my new location. - Thank you, Marcy Carter.

**The Flea Market will be open** October 25, 9 a.m. - 2 p.m. This month featuring homemade baked goods, homemade tortillas, children's books and a coat swap 305 N. Franklin.

**Colby's Holiday Craft and Gift Fair.** Saturday, Nov. 29th at 10 a.m. - 3 p.m. at the Colby Community Building. Colby's largest craft fair.

**Holiday Craft Fair - Bird City, KS,** American Legion Hall, Saturday, Oct. 25, 10 a.m. - 2 p.m. Kids Korner lunch available.

**Carpet Cleaning: 3 Room Special** - \$149.95! Dry-Foam safe & Green Seal approved. Serving NWKS mileage free since 1987. Call today: A+ Cleaners 785-538-2526 or 785-443-5400, Johnene Cheney.

**Dan is back! Dan Geschwentner.** Small remodeling and repair jobs. Call 785-443-3673.

## Help Wanted

**Sleep Inn and Suites** - We're accepting applications for Part time Breakfast Attendant. Salary to be determined based upon qualifications. Top Wages, Paid Vacation, Health Benefits and Monthly Bonuses possible. Apply in person and pick up applications at the Sleep Inn & Suites, 2075 Sewell Avenue, Colby, KS.

**Eberle Construction is looking for** a full time person to do general construction work. Experience preferred but not necessary. Health insurance and retirement plan provided. Starting wage \$12 to \$15 depending on experience. Call Scott 785-672-0310.

**J&B Meat Market - Cook & Front** Counter help. Apply in person, no phone calls.

## Help Wanted

**Hi-Plains Door Systems, Inc.,** is looking for garage door field technicians/installers for its Colby-based operations. Our field technicians/installers work as a team and on their own to install and repair overhead garage doors and openers across western Kansas, eastern Colorado and southwest Nebraska. The successful candidate must have mechanical abilities, a strong work ethic and good interpersonal skills. A clear driving record is required. Experience is helpful but we will train the right person. Salary starts at \$13 for qualified applicants. Insurance benefits are available. Call Marc at 785-462-6352.

**The Team at Kansasland Tire of Norton** has an immediate opening for a service truck operator/general service person. Must have a valid driver's license. Competitive wages, 401k, insurance, & uniforms. Experience preferred, but not necessary we will train. Please stop by at 1101 Rd E1, Norton and pick up an application or call 785-877-5181 EOE.

**HVAC/R technicians and plumbers** are needed at McClure Plumbing & Heating, serving residential and commercial customers. Offices located in Colby, KS and Goodland, KS. Contact Mitch McClure @ McClure Plumbing and Heating, Inc. 720 N. Franklin Ave., Colby, KS 67701, Phone 785-462-7314.

**Make a Difference with DSNWK.** Full-Time Positions with Great Pay & Benefits. DSNWK has immediate openings for the following full-time positions in Atwood, KS: Evening Direct Support Professional and afternoon/evening Personal Assistant. Both positions require supporting, supervising and training individuals with developmental disabilities to help them reach their full potential and maximize integration into the community. The treatment of individuals served with dignity and respect is a prime responsibility. H/S diploma or GED preferred. Must possess a valid Kansas driver's license and a good driving record. Must pass KBI, SRS, and Child/Adult abuse checks. Great pay and benefit package. Apply on-line at www.dsnwk.org and call 785-626-3688 for an interview today. EOE

## Help Wanted

**Rawlins County EMS** is now accepting full-time and part-time applications for EMT's, AEMT's and Paramedics. Applicants should be motivated, comfortable taking care of patients for long transport times and dedicated individuals to work in a rural setting. Applicants must possess a valid Kansas Driver's License and be a certified Kansas EMT, AEMT or Paramedic. AEMT and/or Paramedic must have ACLS, and all positions require a CPR certification. No residency is required. Rawlins County EMS is a Type IIA service and is the primary 911 service. Rawlins County is located in North West Kansas at the intersection of Highway 25 and Highway 36. Rawlins County offers competitive pay with a great benefits package. Applications are available to pick-up, email and/or fax. Submit an application or resume to Rawlins County EMS Office P.O. Box 183, Atwood, Kansas 67730, Fax: 785-626-9486, or email: racoems@gmail.com. For more information please call Phone: 785-626-8052 or Cell: 785-626-6001.

**Carrier wanted for delivery of the Salina Journal** in Colby. Early morning hours, 1 hour per day \$440 per month. Call 1-800-827-6363 Ext. 300 or 866-737-5680.

## Help Wanted

**The Rawlins County Road and Bridge Department** is now accepting applications for a Heavy Equipment Operator. Applicant must have a CDL or be able to get one. Competitive pay with a great benefits package. Employees are subject to random drug and alcohol testing. Pick up an application or submit resume to the Rawlins County Shop at 12303 Highway 25, Atwood, KS. For more information contact Mark Loop at 785-626-3726.

**Great Western Tire of Colby, Inc.,** 1170 S. Country Club Drive, is now accepting applications for all positions. Positions included, but not limited to, lube oil & tire, truck tire, service call, and alignment technicians. Experience required, but will train the right person. Valid driver's license is a requirement. Full time position includes competitive salary and benefits. Apply in person, EOE. Questions please call 785.462.2100.

**PSI Transport, LLC,** is always looking for livestock hauler: owner/operators to pull our trailers and/or company drivers. Newer equipment and excellent benefit package. We primarily stay within the Midwest. To visit about our opportunities give us a call M-F at (785) 675-3881 or (913) 533-2478.

## Misc for Rent

**Horse corral 4 rent,** close to Oakley. 1.6 acres, automatic water with heat, pipe fence, open shed and barn. Room for 4 to 6 horses, call or text 816-351-8749.

## Apartments for Rent

**Three bedroom & two bedroom** apartments available. We pay for gas, water, sewer and trash pickup. Call 785-460-6763; Colby, KS; E.H.O.

## Houses for Sale

**Newly renovated 2BR,** 2 Bath home in Colby. All new kitchen, new FA/CA, attached garage. \$79,000 785-460-6237 or 785-249-8946.

**House for Sale in Colby - 2 bedroom,** 2 car garage, near new interior, fixer upper, central A/C, licensed agent 316-772-3695.

## Misc. for Sale

**For Sale: Quarters or halves -** Hamburgers, steaks, roasts, any amount. Jonny Jones 785-675-8920.

## Lost & Found

**Colby: LOST KITTEN:** Answers to "Chloe" or "Kitty". She's about 6 months old, gray tiger-striped. Wasn't wearing her collar. Disappeared Sunday from 100 block of E. 5th in Colby. Please call (785) 821-4920.

## Wanted

**Needed housekeeper for couple** hours 2 days a week. References needed. 785-443-4054, leave message if no answer.

**Want to buy gravity grain wagon.** Call Stan at 785-447-0391.

**Wanted: Owner Operators to run** all states except California and New England. Reefer, Flatbed and Tanker experience preferred. Please call Jim 785-675-1737.

## Vehicles for Sale

**Call us before you pay** your next insurance premium. American Family Insurance - Rita Peters Agency - Colby 785-462-8246.

**LAND AUCTION**  
SATURDAY, NOVEMBER 15 — 10:00 AM  
ON LOCATION: 4445 Hoch Road — TOPEKA, KANSAS  
858 Acres m/I RANGELAND • SHAWNEE COUNTY, KANSAS  
3 Tracts in Sections 20, 21 & 28, Township 12, Range 14, Shawnee County, KS.  
Exact legal to appear on contracts and deeds



TRACT 1: 218 acres m/I in NE¼ & tract in SE¼, 21-12-14. This is a real good pasture with a large pond, good grass and located on the west side of Hoch Road.  
TRACT 2: 643 acres m/I in Sections 20, 21 & 28-12-14. This pasture is good cow grass with lots of cover for deer, turkey and other wildlife. A hunter's paradise and located on the north side of 49th Street, West of Hoch Road.  
TRACT 3: Combination of Tract 1 & 2 together.

TRACTIONEER'S NOTE: This is a great opportunity to obtain good grass with tremendous hunting diversities located near Topeka. Property will be shown by appointment. Property has income potential from hunting, grazing and possibly development.  
TERMS: 5% earnest money the day of the auction with the remainder at closing on or before December 16, 2014. Title insurance, escrow, closing costs and possible survey to be split with owner. This sale is not contingent on financing and all inspections should be conducted prior to the auction at bidder's expense. Murray Auction and Realty is acting as an agent for the seller. All information obtained from sources deemed to be reliable but not guaranteed. Statements made the day of the auction take precedence over printed material.

**SELLER: DR. RUSSELL REITZ**  
MURRAY AUCTION & REALTY  
Steve Murray, Broker/Auctioneer • 785-556-4354  
www.murrayauctionandrealty.com • murrayauctionandrealty@yahoo.com

**NOW HIRING CLASS-A DRIVERS**

**Excellent Pay & Benefits Package!**  
Our drivers averaged over **\$75,000** last year, with some making over **\$100,000.**  
Late-Model Equipment, Great Benefits!

**OWNER OPERATORS AND COMPANY DRIVERS**

Flexible Work Schedules  
Retirement Benefits, 401k plan,  
Company paid medical, dental, and vision.

Class-A CDL with Hazmat & Tanker end.,  
2 yrs recent verifiable TT exp.

www.bkep.com/careers  
or call 918.237.4011

**Here's What Morton Customers Say**



*"The whole process - it was quick and the quality was there, they did not cut corners, they took their time, they knew what they were doing. It was a really, really overall positive experience."*

Call to discuss your building needs  
Eight offices serving Kansas  
**800-447-7436**  
mortonbuildings.com


**MORTON BUILDINGS**  
mortonbuildings.com

Kim F.

THE STATEMENTS AND OPINIONS ABOUT PRODUCTS EXPRESSED HERE ARE THOSE OF SPECIFIC CUSTOMERS AND SHOULD NOT BE CONSTRUED TO REPRESENT ALL BUILDINGS OR PRODUCTS SOLD, MANUFACTURED, DISTRIBUTED OR CONSTRUCTED BY MORTON BUILDINGS. COPYRIGHT MORTON BUILDINGS 2012. ALL RIGHTS RESERVED. A LISTING OF GC LICENSES AVAILABLE AT MORTONBUILDINGS.COM/LICENSES.ASPX. REF CODE 043.

**GENERAL PURPOSE | FARM | COMMERCIAL | EQUESTRIAN**

**COMPETITIVE WAGES, BENEFIT PACKAGE**



Cash Wa Distributing Is Now Hiring For A Class A Driver In The Colby Area.  
**Starting Pay \$22/hour**  
M-F, approx. 50+ hrs/week.

**Apply on-line at cashwa.com/careers or contact Rick at 308-627-6815 for more info.**

**PLAINS FEEDERS INC., FEEDLOT & LAND AUCTION - WITH RESERVE**  
Tuesday, December 2, 2014 - 10:30 am, MT  
Community Event Center - Burlington, CO

**2,332 +/- Ac - Kit Carson County, CO**  
Feedlot - Pivot Irrigated - Dryland - Pasture

- 12,500 +/- head feedlot
- 3,500 +/- head feedlot
- 344 +/- ac Pivot Irrigated
- 890 +/- ac Dryland
- 1,099 +/- ac Pasture
- 10 +/- ac w/home
- 1 to 2 mi S of Burlington, CO
- 3 pivots w/wells
- Possession upon closing
- Growing wheat included
- Offered in 12 parcels, 4 combos
- Excellent feed source area
- Farmland, Feedlot, & Single Units
- Paved access via Hiway #385


**BUYERS INFORMATIONAL MEETING**  
Wednesday, November 19, 2014 - 10:30 am, MT  
Community Event Center - Burlington, CO

RECK AGRI REALTY & AUCTION  
For Further Information:  
Marc Reck, Broker or Troy Vogel, Broker Associate  
For a Color Brochure, Visual Tour & Online Bidding:  
visit: www.reckagri.com  
**970-522-7770 or 1-800-748-2589**

## MUNICIPAL COURT CLERK

The City of Colby is accepting applications for the position of **Municipal Court Clerk**. The duties of this position include assisting the Municipal Judge; interacting with the public, attorneys and police department; answering the phone; preparing the trial docket; mailing trial notices; accepting, recording, and depositing payments; monitoring compliance of the city attorney's diversion and community service programs; and preparing monthly and annual reports. Successful applicants must have good communication, people, and bookkeeping skills. Minimum of 30 hours per week. Starting salary is dependent on experience and qualifications. The City is an EOE with an excellent benefit package. Application forms are available online at [www.cityofcolby.com](http://www.cityofcolby.com) or from the office of the City Manager, 585 N. Franklin Avenue, Colby, Kansas 67701.

**SCHMIDT**  
ATTORNEY GENERAL



**"I invite all Kansans to join me in supporting Derek for another term as our attorney general."**  
- Senator Bob Dole

- Led the push for the new KBI crime lab
- Recovered more than \$350 million for Kansas consumers and taxpayers
- Fought hard against federal overreach like costly, illegal EPA regulations and 'Obamacare'

www.DerekSchmidt.org

POLITICAL AD PAID FOR BY SCHMIDT FOR ATTORNEY GENERAL, INC. GARY C. ALLERHEILIGEN, CPA, TREASURER

## Public Notice

### NOTICE OF PUBLIC HEARING ON PROPOSED REZONING IN THOMAS COUNTY, KANSAS

TO ALL PERSONS CONCERNED:

You and each of you are hereby notified that the Colby/Thomas County Metropolitan Area Planning Commission will hold a Public Hearing in the Council Chambers of City Hall, 585 N. Franklin Avenue, Colby, Kansas, at 9:30 A.M. on Thursday, November 13, 2014, to hear a request for a zoning change from County I-1 (Industrial District) to County S-1 (Suburban District) from owners of land as follows:

Lee Woofter and Carl Woofter, owners of property more particularly described as follows:

The Southeast Quarter of the Southwest Quarter (SE/4 SW/4) of Section Thirty-five (35), Township Seven (7) South, Range Thirty-four (34) West of the Sixth Principal Meridian, Thomas County.

Mark E. Miller and Kelly A. Miller, owners of property more particularly described as follows:

The South Half of Southwest Quarter of Southwest Quarter (S 2 SW/4 SW/4) of Section Thirty-five (35), Township Seven (7) South, Range Thirty-four (34) West of the Sixth Principal Meridian, Thomas County, Kansas.

James Guilfoyle and Katherine Guilfoyle, owners of property more particularly described as follows:

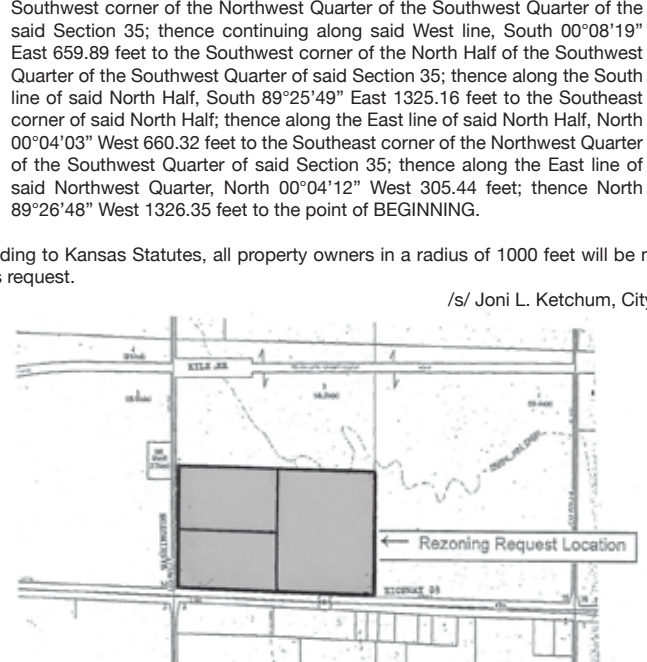
The North Half of the Southwest Quarter of the Southwest Quarter and a portion of the Northwest Quarter of the Southwest Quarter of Section 35, Township 7 South, Range 34 West of the 6th P.M., County of Thomas, State of Kansas, being more particularly described as follows.

Considering the North line of the Southwest Quarter of Section 35 to bear an assumed bearing of North 89°29'28" West with all bearings contained herein relative thereto.

Commencing at the Northwest corner of the Southwest Quarter of Section 35; thence along the West line of the Southwest Quarter of said Section 35, South 00°08'25" East 1014.40 feet to the point of BEGINNING; thence continuing along said West line, South 00°08'25" East 305.50 feet to the Southwest corner of the Northwest Quarter of the Southwest Quarter of the said Section 35; thence continuing along said West line, South 00°08'19" East 659.89 feet to the Southwest corner of the North Half of the Southwest Quarter of the Southwest Quarter of said Section 35; thence along the South line of said North Half, South 89°25'49" East 1325.16 feet to the Southeast corner of said North Half; thence along the East line of said North Half, North 00°04'03" West 660.32 feet to the Southeast corner of the Northwest Quarter of the Southwest Quarter of said Section 35; thence along the East line of said Northwest Quarter, North 00°04'12" West 305.44 feet; thence North 89°26'48" West 1326.35 feet to the point of BEGINNING.

According to Kansas Statutes, all property owners in a radius of 1000 feet will be notified of this request.

/s/ Joni L. Ketchum, City Clerk



(Published in the Colby Free Press on Friday, October 24, 2014)

Stock Realty and Auction Company  
Wants to be Your Real Estate Company.  
Molly J. Oliver and Kevin M. Barnett  
Want to Go to Work for YOU!



**Molly J. Oliver**  
462-5203

**Kevin M. Barnett**  
443-1722

STOCK REALTY & AUCTION CO.  
Land Brokers and Auctioneers  
390 N. Franklin, Colby, KS 67701  
(785) 460-7653

**FEATURED HOMES**

 <p>Just Hit Market!! Lovely 2-3 BR, 2 Bath 225 S. Grant \$89,900</p>	 <p>Delightful Dining Room French Door to Rear Yard</p>	 <p>Large Living Room Neutral Colors</p>
 <p>This 2 BR Home is Full of Extras Lots of Furniture Included 865 S. Garfield \$72,500</p>	 <p>Living Room Furniture and Flat Screen TV Included</p>	 <p>Eat-in Kitchen Appliances Included, Call Molly!</p>
 <p>Beautifully Updated with Original Charm, Protected. A Must See! 210 W. 5th Call Molly</p>	 <p>Newer - Custom Built Home in Selden, KS with Huge Finished Shop</p>	<p><b>Molly Oliver's 2014 Facebook Holiday Cash Giveaway! Go to Molly J Oliver/Stock Realty and Auction Co. on Facebook for details.</b></p>



# Classifieds

To place your classified ad, mail (155 W. Fifth), fax (785-462-7749), phone (785-462-3963), or stop by our office at 155 W. Fifth

## Recreation Vehicle

**2009 38 foot Montana fifth wheel** travel trailer with 4 slide-outs. Used 1 year, never pulled. 785-626-5581 or 785-626-3823.

## Seed and Feed

**Alfalfa large round bales & small square bales,** dairy and good stock cow alfalfa, BMR Sedan. Jonny Jones, Hoxie 785-675-8920.

## Services

**Bixenman Construction** Concrete, decorative concrete, kitchens, bathrooms, additions, steel siding & roofs, and vinyl siding 785-443-3181.

**System Administration, Information Technology.** Keep your business running in top gear with quality, professional IT expertise. Full gamut service. Over 25 years' experience in computer systems. I manage your 5 to 50 business computer network, on-site 1 day per week, with annual contract. Business references available. JB Tech, Jeff Brittenham 785-953-7221.

**Tree Trimming & Removal** Call Kerry @ Infinite Connections, bucket truck, stump grinder, skidster, insured and free estimates. Thorough clean up. 785-626-4261.

**Tree Service:** Call Abel Tree Service LLC for tree removal, stump grinding and trimming. Equipped with a bucket truck. In the Colby area now! Call 785-871-7275 now for free estimates. Satisfaction guaranteed.

**Do Your Feet Hurt?** We can help with I-Step Technology. We also provide medicare approved diabetic shoes up to size 15 with doctors prescription by appointment only. Currier Drug, Inc, Atwood. 1-800-696-3214.

## Pets/Supplies

**AKC Chesapeake Bay Retrievers,** champion lineage, male or females. \$750. Call 719-406-2044. www.hartwindkennel.com.

## Garage Sales

**Rummage Sale 902 Court Ter.** - Friday, 6 - 8 p.m., Saturday, 8 a.m. - noon. Women's clothing & shoes, jr. girls clothes, misc. household items.

**230 N. Washington Ave.,** 1 mile W. on Hwy 24, 1/4 mile N. - Saturday 8 a.m. - noon. Teen & sm. women's clothing, home décor, household items, bedding, halloween décor, stamping supplies, stamps, lots of misc.

**1160 Golden Ave.** - Saturday, 8 a.m. - noon. Various farm construction & shop type items, fuel storage tanks, barrels & barrel pumps, air compressor, tools. RV air conditioner, extension ladder, 5th wheel hitch, 2 pickup cross boxes, work benches, etc.

**Fall Garage Sale** - 950 Mentlick Dr. - Saturday, 9 a.m. - noon. Lots of great stuff, like new microwave/convection oven.

## Kansas Classified Network

**Adoption**  
ADOPTION PREGNANT? Happily Married Couple Wishes to adopt a beautiful Baby to fill our hearts & provide Wonderful opportunities for. EXPENSES PAID Alexis & Rob 310-499-8330

**Auctions**  
Don Hamit Land & Auction Co., Inc. invites you to visit www.hamitauction.com to view our upcoming equipment and land auctions. Call 888-573-6585 for more information.

**Help Wanted/Truck Driver**  
EXPERIENCED DRIVER OR RECENT GRAD? With Swift, you can grow to be an award-winning Class A CDL driver. We help you achieve Diamond Driver status with the best support there is. As a Diamond Driver, you earn additional pay on top of all the competitive incentives we offer. The very best, choose Swift. • Great Miles = Great Pay • Late-Model Equipment Available • Regional Opportunities • Great Career Path • Paid Vacation • Excellent Benefits Please Call: (602) 714-9455

## Kansas Classified Network

**Health/Beauty**  
IF YOU USED THE BLOOD THINNER XARELTO and suffered internal bleeding, hemorrhaging, required hospitalization or a loved one died while taking Xarelto between 2011 and the present time, you may be entitled to compensation. Call Attorney Charles H. Johnson 1-800-535-5727.

**Help Wanted**  
\$2000 Bonus! Oilfield drivers. High hourly, Overtime. Class A-CDL / Tanker. 1 year driving Experience. Home Monthly. Paid Travel, Lodging. Relocation NOT necessary. 1-800-588-2669. www.transports.com

**Help Wanted**  
CONTRACT SALESPERSON Selling aerial photography of farms on commission basis. \$4,225.00 first month guarantee. \$1,500-\$3,000 weekly proven earnings. Travel required. More info mspphotosd.com or call 877/882-3566

**Help Wanted**  
OTR Drivers Truckload! PD Practical/loaded & Empty same. Good Dot rating. Get Home. Weekly pay. Class A/2 years experience required. www.climateexpress.com 636-584-6073.

**Help Wanted/Truck Driver**  
Butler Transport Your Partner In Excellence Drivers Needed. Great hometime \$650.00 sign on bonus! All miles paid. 1-800-528-7825 or www.butlertransport.com

**Help Wanted/Truck Driver**  
Company Drivers, Owner Operators: Great Pay, Great Miles (Average 2500/wk) Running Newer Equipment, Excellent Home Time! CDL-A 1 year OTR Experience 1-800-831-4832 www.SchusterCo.com

## Kansas Classified Network

**Help Wanted/Truck Driver**  
DRIVER TRAINEES NEEDED! Become a driver for Stevens Transport! NO EXPERIENCE NEEDED! New drivers earn \$800+ per week! PAID CDL TRAINING! Stevens covers all costs! 1-888-589-9677 drive4stevens.com

**Help Wanted/Truck Driver**  
Drivers - START WITH OUR TRAINING OR CONTINUE YOUR SOLID CAREER. You Have Options! Company Drivers, Lease Purchase or Owner Operators Needed (888) 670-0392 www.CentralTruckDrivingJobs.com

**Misc.**  
SAWMILLS from only \$4397.00-MAKE & SAVE MONEY with your own bandmill- Cut lumber any dimension. In stock ready to ship. FREE Info/DVD: www.NorwoodSawmills.com 1-800-578-1363 Ext. 300N

## Hiring Truck Drivers

Hiring Class A or B CDL Construction Drivers. 5 day work week. Good driving record and drug testing required. Great pay with benefits, including health insurance, 401k retirement, holidays & vacations.



785-672-4319  
Oakley, KS  
www.sporerland.com  
Equal Opportunity Employer

## Kansas Classified Network

**Help Wanted/Truck Driver**  
Great Plains Trucking of Salina, KS is looking for experienced OTR Tractor Trailer Flatbed Drivers or recent Driving School graduates. Our Drivers travel 48 U.S. states as well as the lower Canadian provinces. We offer excellent compensation, benefits, home time and equipment. Please contact Brett or Randy at 785-823-2261 or brettw@gptrucking.com, randyl@gptrucking.com

**Misc.**  
Age 100? Will you live to age 100? Reasonable life insurance to age 100. No pressure, no hassle, just the facts. www.term100.com John Queen 800-383-9336

**HELP WANTED**  
Colby Public Schools has a vacancy for a full-time custodian. Sick leave, vacation, health insurance benefits, state retirement package and other benefits may also be available. A classified district application is available at the Administration Office, 600 West Third, Colby. Applications accepted until positions are filled. 785-460-5000 EOE

Use the *Classifieds!*  
785-462-3963

## Kansas Classified Network

**Misc.**  
For Sale LENDERS OFFERING SPECIAL GOVT PROGRAMS For Manufactured Homes. \$0 Down for Land Owners. FHA for first time Buyers. VA - \$0 Down for Veterans. Section 184 for Federal Tribe members. Lenders accepting less than perfect credit. 866-858-6862

## Public Notice

**NOTICE OF TESTING OF THOMAS COUNTY ELECTRONIC/ELECTROMECHANICAL VOTING SYSTEMS**

Notice is hereby given pursuant to K.S.A. 25-4411(b), 4610(b) that testing of the automatic tabulating equipment will be conducted on Monday, October 27, 2014 between 9:00 a.m. AND 11:00 a.m. in the Conference Room of the Thomas County Office Complex, 350 S. Range Ave., Colby, Kansas 67701 to ascertain that the equipment will cast ballots and correctly count the votes cast for the General Election, to be held on the 4th day of November, 2014.

Shelly A. Harms,  
Thomas County Clerk/Election Officer

(Published in the Colby Free Press on Friday, October 24, 2014)

## Public Notice

**IN THE DISTRICT COURT OF THOMAS COUNTY, KANSAS PROBATE DEPARTMENT**

In the Matter of the Estate of ELON L. MILLER, Deceased.

Case No. 2014-PR-43

## NOTICE TO CREDITORS

THE STATE OF KANSAS TO ALL PERSONS CONCERNED:  
You are hereby notified that on October 8, 2014, a Petition for Issuance of Letters of Administration was filed in this Court by Willard W. Miller, Jr., an heir of Elon L. Miller, deceased.  
All creditors of the decedent are notified to exhibit their demands against the Estate within the latter of four months from the date of first publication of notice under K.S.A. 59-2236 and amendments thereto, or if the identity of the creditor is known or reasonable ascertainable, 30 days after actual notice was given as provided by law, and if their demands are not thus exhibited, they shall be forever barred.

Willard W. Miller, Jr., Petitioner

Bruce Flipse, #10897  
FLIPSE LAW OFFICE  
325 North Chickamauga  
P. O. Box 606  
Colby, Kansas 67701  
(785) 460-3365  
Attorney for Petitioner

(Published in the Colby Free Press on Friday, October 10, 17, and 24, 2014)

**K-STATE**  
Research and Extension  
**EXTENSION AGENT**  
Family and Consumer Sciences opportunity in Wichita County, Leoti.  
Details:  
www.ksre.ksu.edu/jobs.  
Deadline: 11/14/14.  
K-State Research and Extension is an EOE of individuals with disabilities and protected veterans.  
Background check required.

**We are hiring for: Housekeepers**

**Top Wages • Flexible Hours • Bonuses**

Please apply in person at the front desk  
1950 S. Range Ave.  
Colby KS

**ARE YOU LOOKING FOR AN EXCITING CAREER? JOIN THE CLEARY TEAM!!**

**NOW HIRING FOR CONSTRUCTION SALES!**

Join our COLBY Building Sales Team for the areas surrounding Oakley, Goodland, and Colby, KS or Burlington, Yuma, and Wray, CO. Base salary plus bonuses, full benefits, paid vacation and holidays, 401K plans, and your own company vehicle!! Construction and sales experience preferred. Join our debt-free, family owned company with a 99% customer satisfaction rating.

**APPLY TODAY!!**  
www.workforclearybuildingcorp.com  
990 S. Range Avenue, Colby KS 67701  
785-462-2023

**JOIN A WINNING TEAM IN COLBY**

## Store Manager

and all positions

Casey's is looking for a friendly, energetic individual to fill a managerial position.

- Days, Nights, Weekends, various hours
- Free fountain drinks
- Friendly, home-town work environment
- 1/2 Price meals
- Experience preferred
- Paid Training
- Insurance, Health & Dental
- 401K

**Apply by mail or online:**  
Casey's General Store  
213 Washington  
Ellis, KS 67637  
[www.caseys.com](http://www.caseys.com)  
EOE

## BOARD POSITION OPENING

Northwest Kansas Groundwater Management District No. 4 Board of Directors is seeking a replacement to fill an un-expired Thomas County board position. The board position would start at the date of appointment and extend until the election for that position in 2017. In order to qualify the individual would need to be an eligible voter in GMD4 and reside within Thomas County.

The Board will appoint that replacement at its November 6th, 2014 board meeting. Interested individuals should submit a letter of interest to the GMD4 office no later than 5:00 p.m. CDT, October 31, 2014. Interviews of interested individuals will be held in public session during the board meeting on November 6th 2014, at 10:00 a.m.

For further information, please contact the GMD 4 offices at 1290 West 4th Street, P O Box 905, Colby, Kansas 67701, or at 785-462-3915.

1977 - 2014  
**37+**  
YEARS OF  
EXPERIENCE  
EXPERTISE  
EXCELLENCE

## FARM & RANCH REALTY, INC.

1420 W. 4<sup>TH</sup> - P.O. BOX 947  
COLBY, KS 67701  
Telephone: 785-462-3904  
**DONALD L. HAZLETT**  
Broker

[www.farmandranchrealty.com](http://www.farmandranchrealty.com)

We invite you to talk to one of our Real Estate professionals:

- Don Hazlett, Broker
- Cindy Hake, Office Mgr
- Naomi Ward
- Melanie Voss
- Steve Hazlett
- Ron Evans
- Ed Currier
- Neal Mann
- Mike Bailey
- Grant Bailey
- J.D. Hinginer
- Travis Weaver
- Dennis Weaver

### UPCOMING AUCTIONS

10/28/14 - 5,000+ acres cropland & grass in Osborne, Rooks & Russell Counties

11/7/14 - 800 acres Finney Co, KS cropland, NE of Garden City, selling 3 tracts and combos

11/12/14 - 120 acres Rawlins Co, KS cropland, 2 individual tracts

11/14/14 - 378+ acres Otero & Pueblo Counties, CO irrigated cropland, Oxford ditch shares, 180,000 bushels of grain bin storage, 10,850 sq. ft. storage bldg. & house w/shop & hay shed all located on Hwy 50 near Fowler, CO, tracts & combos

11/18/14 - 2,400 acres Gove Co, KS cropland & grass, 10 tracts & combos

11/21/14 - 960 acres Gove/Sheridan Counties, KS cropland, 5 tracts & combos

12/2/14 - 1,940 acre Kearny Co, KS irrigated farm, South of Arkansas river, selling in 5 tracts & combos

12/9/14 - 320 acres Sherman Co, KS cropland, South of Edson

## JUST LISTED

**1725 HARVEY**  
Price: \$124,000

**575 La Hacienda Dr**  
PRICE: \$ 295,000

**110 S. Mission Ridge**  
PRICE: \$ 143,000

## LAND FOR SALE

**THOMAS:**  
• 160 ac cropland & CRP, NW of Levant, E/2W/2 of 20-7-35 - NEW LISTING!  
• 10 acres on Hwy 83, 1 mile South of the west I-70 exit North of Oakley w/buildings & water well - **PRICE REDUCED!**

**LOGAN** - 160 ac cropland W of Winona, NW/4 of 33-11-36

Thinking of **BUYING OR SELLING A HOME?**  
Call **MELANIE VOSS** at 785-443-0611

**\*\*CHECK OUR WEBSITE FOR ADDITIONAL LISTINGS & VIRTUAL TOURS!\*\***

**"When you list with Farm & Ranch, it's as good as SOLD!"**

# 3255± ACRES IN 13 TRACTS

## SCHRADER Real Estate and Auction Company, Inc. KANSAS LAND AUCTION

FINNEY & GRAY COUNTIES - 15 Mi SE of Garden City  
**THURSDAY, NOVEMBER 20<sup>TH</sup> • 10AM**

*Held at the CLARION INN - GARDEN CITY, KANSAS*

- 14 Irrigated Circles
- Grassland & CRP Acreage
- 8 Alfalfa Circles
- Excellent Location

**ONLINE BIDDING AVAILABLE CONTACT AUCTION CO.**

**INSPECTION DATES:**  
Monday, October 27 • 4 - 6pm and Friday, November 7 • 10am - 12 Noon  
*Inspection Headquarters is at the home adjacent to the southside of Tract 1.*

OWNER: Bob & Kathy Husband • Brad Horrall KS Lic.# BR00232648

Call for Color Brochure & Additional Information  
**800-451-2709 • SchraderAuction.com**



# Super Saturday arrives

What a Saturday of ultimate showdowns for athletes from every Colby-area college or high school.

While Colby Community College runs in Saturday's Region VI cross-country championships at Meadow Lake Golf Course, prep teams will be everywhere from Hays to Holcomb to Almena in "make state or call it a season" competitions.

All cross country regional races and volleyball substate tournaments feature a 2 p.m. start time. A glance at the weekend schedule:

**Today**

Football: Colby at Clay Center, 7 p.m.

Football: Weskan at Triplains-Brewster in Winona, 7 p.m.

Football: Hoxie at Golden Plains, 7 p.m.

College volleyball: Colby at Dodge City, 6:30 p.m.

Volleyball: Heartland Christian at KCAA State Tourney in Manhattan, TBA

**Saturday**

College cross country: Colby is home for Region VI championships at Meadow Lake. Women run at 10 a.m.; men are set for 11 a.m.

Cross Country: Colby High in



KEVIN BOTTRELL  
Goodland Star-News

Senior Isaiah Miller and the Colby High Eagles will be running for 4A state cross-country spots at Saturday's regional showdown in Hays.

4A Regional at Hays, 2 p.m.; in 1A Regional at Wheatland, 2 p.m.

Volleyball: Colby High in 4A substate at Holcomb. Eagles play second match against Hugoton; title match immediately follows.

Volleyball: Golden Plains vs. Triplains-Brewster in 1A substate at Almena, 2 p.m. Winner advances to semifinal against No. 1 seed Logan (29-6 record). Other semifinal pits No. 2 Northern Valley vs. No. 3 Cheylin. Finals follows on Saturday.

# K-State targets 'milestone' win

MANHATTAN (AP) — Kansas State finds itself leading a tight Big 12 title race ahead of welcoming conference-rival Texas to town.

The No. 11 Wildcats (5-1, 3-0) are also on the brink of a milestone, needing a win over the Longhorns on Saturday to mark the 500th in program history.

Opening kickoff is 11 a.m. central time on ESPN.

More than one-third of those victories — 183 — have come under Bill Snyder, whom Texas coach Charlie Strong expressed his admiration for prior to this matchup.

"When I took over the program at Louisville I called him, because that's the type of program I wanted to run," Strong said. "I wanted to run Louisville just like it's been done at Kansas State."

The Wildcats, the only unbeaten team in Big 12 play, picked up win No. 499 last Saturday with a narrow 31-30 victory over then-No. 11 Oklahoma and subsequently jumped three spots in the AP Top 25.

The Wildcats face a Texas team in the early stages of a rebuilding effort under Strong. The Longhorns defeated Iowa State last week 48-45, bouncing back from

their worst six-game start since 1956.

Kansas State has always fared well against Texas (3-4, 2-2), rebuilding or not. At 8-6, the Wildcats are the only current Big 12 team with a winning record against Texas.

They will face a Texas defense that has allowed just 163.9 passing yards per game — fifth-fewest in the country.

# Trojans take aim at Dodge

By R.B. Headley

Colby Free Press  
rbheadley@nwkans.com

A tough five-set loss isn't expected to linger as Colby Community College will be playing volleyball again tonight at Dodge City.

The Trojans are aiming for their 10th Jayhawk Conference win (9-5 record currently) against a Dodge team that hasn't won one (0-14 league, 4-29 overall).

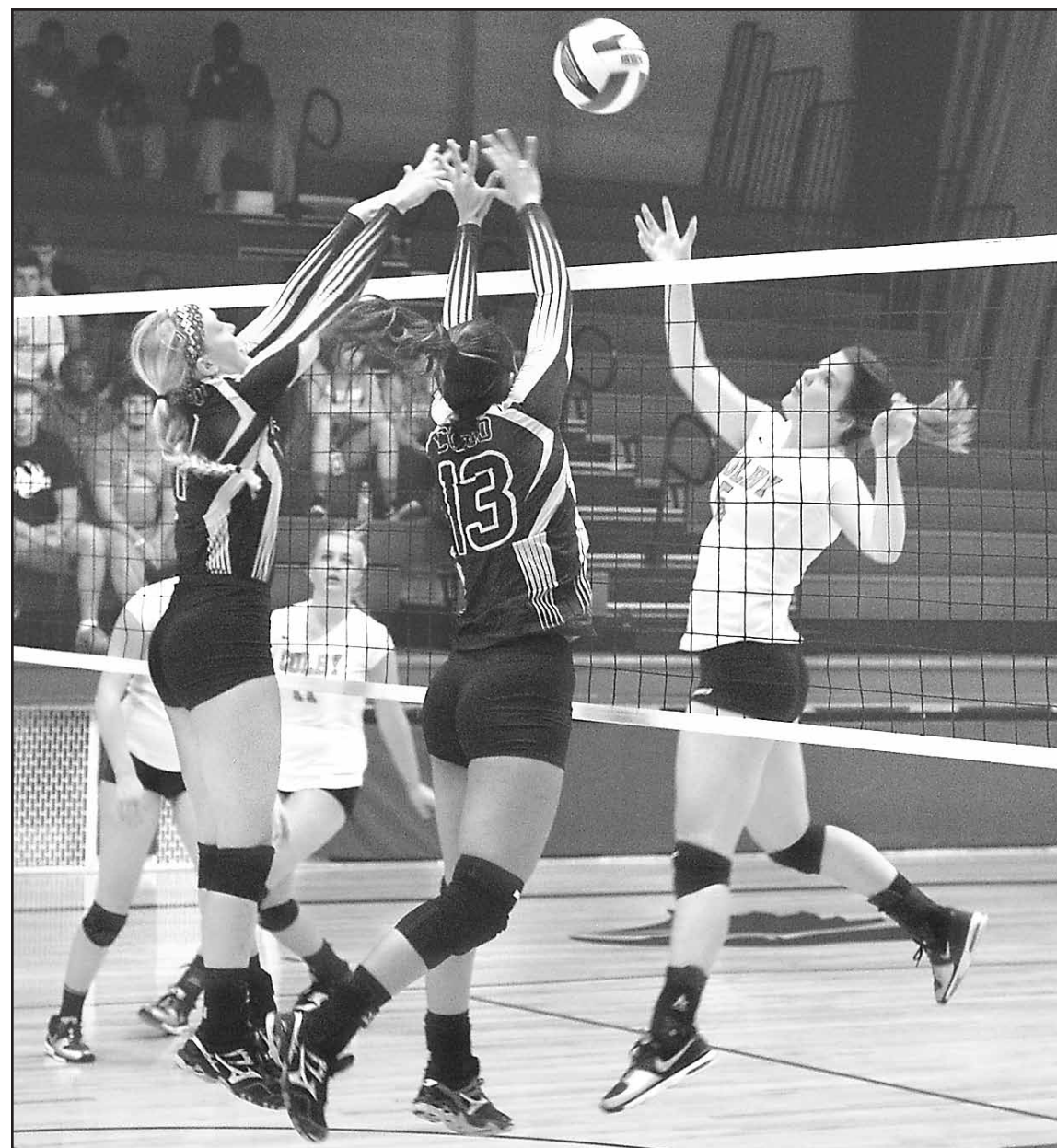
It's a chance to quickly erase the taste of Cloud County's 25-22, 22-25, 25-22, 24-26, 15-10 triumph over Colby Wednesday evening.

The Trojans finished their two set wins in great style with freshman setter Miranda Geist and hitting machine Laura Hillebrand both serving clinching "aces."

However, the visiting Cloud County Thunderbirds were just as focused on taking over second place among all Jayhawk West teams.

Cloud took the opener and — despite terrific Trojan libero Danielle Rodriguez's 29 digs — hammered a kill so powerful that it deflected off Colby Community Building's ceiling and finished set four.

Colby took a 2-0 lead in the decisive fifth set on Rebekah Pearce's kill and a Hillebrand



R.B. HEADLEY/Colby Free Press

Forrest on fire! Sophomore Kamryn Forrest attacked two Cloud County blockers during her six-kill performance for Colby Community College in Wednesday's Jayhawk Conference West Match at Colby. The Trojans are playing again tonight at 6:30 p.m. in Dodge City.

stuff block. Hammering shots also came from top hitter Adrianna

Sosnowska and sophomore middle blocker Kamryn Forrest.

Yet Cloud County (18-6 overall, 10-4 league) regained the lead and finished this five-set victory.

Complete Colby leaders from Wednesday's match:

Kills: Sosnowska 13, Mallory

Mueller 12, Hillebrand 10, Pearce 9, Forrest 6.

Assists: Geist 46.

Digs: Rodriguez 29, Pearce 14, Sosnowska 14, Geist 11.

Block assists: Mueller 8, Forrest 6, Pearce 4, Sosnowska 4, Geist 3, Hillebrand 3.

# Colby man attends World Series opener

Even the busiest Colby business people sometimes realize higher priorities have to come into play.

"It's the World Series," Jason Timmerman declared about skipping work on Tuesday to attend the Kansas City Royals' first Fall Classic in 29 years.

Timmerman was the only Colby fan among 10 who purchased World Series tickets to sit together for Game 1 against San Francisco.

The Timmerman Feeding Corporation owner-manager didn't

offer too many details like ticket prices, plus he was already moving on to a meeting in McCook, Neb., Thursday. Connections with the *Free Press* were lost just a few minutes into an interview.

Yet despite a 7-1 Royals defeat, the trip was clearly worth his time.

"I wished it had been last night's game," Timmerman said in reference to the 7-2 Royals Game 2 win on Wednesday. "But it was electric. And we visited one of those famous barbecue places."

# Bulldogs battle tough league tourney

By Judy Rogers

Golden Plains High School

The Western Kansas Liberty League has some of the preeminent high school volleyball teams in the state with three of their teams in the 1A state top 10 and additional teams all playing competitively throughout the season.

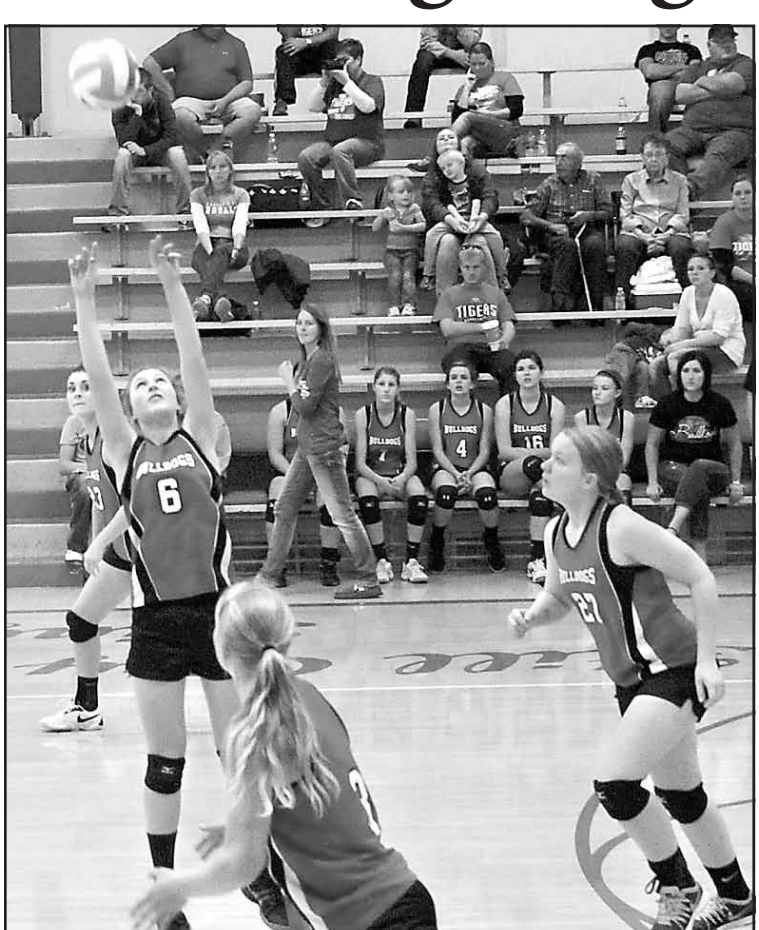
The league tournament at Wheatland-Grinnell last weekend consisted of two pools with the top two teams in each pool advancing to the semifinals.

The Golden Plains Lady Bulldogs entered the tournament as a No. 7 seed out of 10 teams with two of the state ranked teams in their pool.

Their first match was against the Weskan Lady Coyotes. The girls played well but lost points several times with net violations to finish in a 25-17 loss. In the second set, a cross court kill by Maddy Walz gave Golden Plains a 25-23 win and a third set.

The Coyotes pulled ahead early, but with sophomore Morgan Ritter behind the serve line, the Bulldogs closed the gap. Sophomore Gabrielle Schiltz was all over the court and helped bring the game to within two points at 21-19. Yet the Coyotes finished with a 25-20 win.

The second match of the pool was against the Palco Roosters. These two teams played close



JUDY ROGERS/Golden Plains High School

Golden Plains sophomore Gabrielle Schiltz delivered a good set while Bulldogs move in to attack during recent varsity volleyball.

to start the set. With a 6-6 tie, Golden Plains scored several consecutive points with Kami Miller, Morgan Ritter, and Kaylie Schaben serving and pulling ahead

for an eight-point lead. The Lady Roosters fought back and tied it at 19 until Miller served an ace for Golden Plains.

With another tie at 21, the game

came down to the wire but the Roosters pulled ahead for the 23-25 win.

The Bulldogs took control and never backed down, winning 25-16.

Both teams played well defensively in the decisive third set and rallied down to the last point. There were ties at 19, 21, 23 and 25 so it was nail biting time. Schiltz served the last two points for a 27-25 Golden Plains win.

The next match was against home-team Wheatland-Grinnell. Golden Plains played with more confidence in the second set but lost 25-8, 25-20.

As the day grew long, the girls had one more game to play in their pool. This time they met the Western Plains Bobcats.

Golden Plains lost the first set, 25-19, rallied to make hustling plays in a 25-23 win, and then couldn't quite get enough energy while losing 25-17.

"We had some weaknesses at the beginning," Miller said. "But by the end, we had made some improvements. We were covering the floor much better towards the end of the day."

"We still have things to work on in practice to be ready for substate," Schiltz added. "We need to make sure we keep the intensity throughout the whole match."

The Bulldogs will compete in substate at Almena on Saturday.

# Texas upsets 'Cats?

Fresh off an 8-1 week where he took Kansas State to win at Oklahoma, *Free Press* scribbler R.B. (Really Big) candy craver Headley believes he can break his season-long tie with Associated Press football guru Ralph Russo.

Both own 55-17 pickin' records of selected college football big games, but Russo's about to make another big mistake by saying:

**Texas 28,**

**No. 11 Kansas State 24.**

"He's about to be so stinkin' wrong," Rotten Breath declared.

Yes, Rarely Brilliant has become a brown-nosing Wildcat fan as a few other Colbyites mentioned last weekend. But Round Belly believes the Wildcats will keep hold of their current Big 12 lead:

**Kansas State 31, Texas 26.**

"Look out for the (TCU) Horned Frogs, though," R.B. said.

Other big picks for Week 9:

No. 3 Ole Miss at No. 24 LSU. Both like No. 3 while other big wins being No. 1 Mississippi State at Kentucky, No. 6 Oregon over California, No. 8 Michigan State keeping Michigan in misery, No. 13 Ohio State at Penn State and No. 16 Nebraska over Rutgers.

Yet they do disagree on No. 22 West Virginia at Oklahoma state where R.B. likes the Pokes. Russo goes with Mountaineers.

He also takes No. 14 Arizona State at Washington; R.B. takes the Huskies.

No. 20 USC at No. 19 Utah? Both are taking the Utes.

**VAP CONSTRUCTION, INC.**  
STEEL & POST FRAME BUILDINGS

**SPECIALIZING IN CUSTOMIZED STEEL AND POST FRAME BUILDINGS**

**WE WILL BEAT ANY NORTHWEST KANSAS COMPETITOR'S PRICE ON A COMPARABLE PROJECT!!**

AFFORDABLE • SUSTAINABLE • LOW-MAINTENANCE • MULTI-PURPOSE

Vap Construction, Inc. offers numerous design styles, sizes, exterior finishes, accessories and colors for your Commercial, Agricultural or Residential Building.

**CONTACT US FOR A QUOTE TODAY! CALL: 866-492-1978**

Serving Kansas, Nebraska, Colorado and Wyoming • Fully insured with over 25 years of experience

For more information visit: [vapconstruction.com](http://vapconstruction.com) • 605 North 10th Street | Atwood, KS 67730

**VAP CONSTRUCTION**  
Steel & Post Frame Buildings

**VOTE RICK BILLINGER**

Rick Billinger is your Common Sense Conservative, with determined leadership!

**Rick is:**  
Pro-Life  
Pro-Schools  
Pro-Rural Health  
Pro-Guns  
Pro-Ag

**Rick would appreciate your vote on Nov. 4!**

Rick is endorsed by:  
Ward Cassidy, State Representative  
Kansas Farm Bureau  
Kansans for Life  
Kansas Livestock Association

Paid for by Billinger for Kansas, Douglas Sederstrom, CPA, Treasurer.