



## Atwood, Colby ally hospitals

Atwood and Colby hospitals have announced an alliance where a Colby doctor will become chief of staff at the smaller hospital, supervise the "midlevel" providers there and see patients in Atwood four half days a month.

Citizens Medical Center and Rawlins County Health Center announced the agreement Friday in a statement by their chief executives, Kevan Trenkle of Citizens Medical and Sharon K. Cox in Atwood.

"This is the direction health care should be moving towards," Trenkle said. Partnerships are imperative. We need to work together and collaborate instead of competing with one another, which is the only way we can all succeed."

Dr. Brewster Kellogg will lead the Rawlins County staff and oversee and supervise the "mid-levels" at the hospital, emergency room and clinic, the announcement said. He will be available on-call 24 hours a day to offer support as needed, the hospitals

See "HOSPITALS," Page 2

## Information director retires

Colby Community College's veteran public information director says she is retiring at the end of the year.

"I've been here 18 years, and I just thought it was probably time to do something else," said Debbie Schwanke, who will work through the end of the year.

College trustees accepted Schwanke's retirement as the school's spokesman at their meeting Monday night. Schwanke said she had not heard how the college will go about finding her replacement.

She said she is not sure what she will do now, but described her departure as a good opportunity for the college.

"There are a lot of young people who would love to do this job," she said. "It's a great job; it really is."

Schwanke said she and her husband Charles moved to Colby in 1974. They both went to Scott City High School and then Fort Hays State University, and she went on to the University of Kansas, graduating with a degree in business administration.

After moving to Colby, she spent about nine years working for KXXX radio station, then another nine years working for KLBV, a television station that used to operate in town and another year at KBSH television station in Hays before taking her job at the col-

## Water rates set on winter use

The city will start reading its water meters next month as it gathers data used to set people's sewer prices for the coming year.

Monthly from Nov. 20 through Feb. 20, employees will read water meters, covering all the water residential customers use during that time, the city says. The figures will be used to decide sewer charges for the next year, starting with the bill customers get April 1.

The city will read meters to add up all usage from mid-November through mid-February, and the average of the three months will be used to determine the sewer bill, city officials said. Since there's no

practical way to separate types of use, the readings include all inside and outside water used.

Winter figures are used in the calculations on the assumption that at this time of year, most water is used indoors and flows into a sewer.

Meter readings, however, include any outdoor usage from Nov. 20 on, including watering the lawn or washing your car on a warm day. Any outdoor use after then could drive up the user's sewer bill for a whole year.

For questions, call City Hall at 460-4400.



## Ghosts sing for parents



Ghosts, bones, nerves and muscles were the theme for the Colby Grade School third grade musical "Bones" Tuesday night, directed by Jill Nickols and accompanied by Nikki Brattin. The ghosts (top) had to "Think-A-Think" to figure out what they were. The nerves (in black, at left) helped determine the ghosts were, in fact, bones. At the beginning of the program (bottom) the ghosts were sneaky, crawling onto the stage.

KATHRYN BALLARD  
Colby Free Press



## Church conference hears about hardship Christians face

Preaching on the feast day of St. Ignatius of Antioch, the head of the Episcopal Church, told western Kansas Episcopalians assembled for their annual conference in Colby on Friday that the line of martyrs stretches from the early day to the present.

Ignatius, third bishop of Antioch, in today's Syria, is reputed to have been the first Christian to have been thrown to the lions in

the coliseum of Rome, the Most Rev. Katharine Jefferts Schori told about 100 conference delegates, clergy and others assembled at the opening eucharist, held at the Colby United Methodist Church.

He is said to have followed St. Peter in his office and to have been a disciple of St. John. One story, or legend, is that he was one of the children embraced and blessed by the Lord himself.

By the time of his arrest, she said, Ignatius was in his 80s, and he embraced his martyrdom. Legend has it that he stood up in front of the Emperor Trajan and proclaimed his belief in Christ, a direct challenge to the authority of the Roman state at the time.

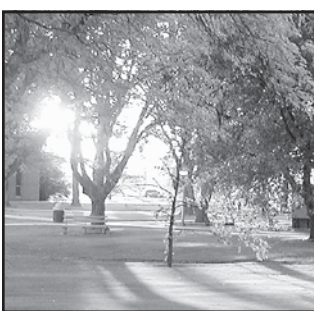
The emperor indulged him, ordering Ignatius arrested and tried. He was taken to Rome under guard by 12 armed Roman soldiers. Episcopal bishops who met in

MARIAN BALLARD/Colby Free Press  
Diocese bishop, the Rt. Rev. Michael Milliken (left); Presiding Bishop the Most Rev. Katharine Jefferts Schori; and the Rev. Dr. Don H. Compier of the School of Ministry visited together during a break in the convention of the Episcopal Diocese of Western Kansas Friday at the City Limits convention Center.

See "HARDSHIP," Page 2



Weather



National Weather Service

Tonight: Mostly clear, with a low around 49. South wind around 10 mph becoming west after midnight.

Friday: Sunny, with a high near 85. West wind 5 to 10 mph.

Friday Night: Clear, with a low around 47. South wind around 5 mph becoming north after midnight.

Saturday: Sunny, with a high near 79. Northeast wind 5 to 10 mph becoming southeast in the afternoon.

Saturday Night: Mostly clear, with a low around 47.

Sunday: Sunny, with a high near 77.

Sunday Night: Mostly clear, with a low around 46.

Monday: A 20 percent chance of showers. Partly sunny, with a high near 64.

Monday Night: A 20 percent chance of showers. Partly cloudy, with a low around 37.

Tuesday: Sunny, with a high near 61.

Wednesday: High, 74; Low 40

Precip: Wednesday Trace

Month: 0.48 inches

Year: 16.79 inches

Normal: 19.29 inches

(K-State Experiment Station)

Sunrise and Sunset

Friday 8:04 a.m. 6:53 p.m.

Moon: waxing, 1 percent

(U.S. Naval Observatory)

Church conference hears of hardship Christians face

From "HARDSHIP," Page 1

Asia last year learned something about what it's like to be a Christian in a non-Christian country, she said.

And the martyrs of today stretch into the far corners of the globe, she noted, from Christians treating those with Ebola in Africa, some of them dying, to Christians fleeing violence in

the Mideast and south Asia.

"The Christian being driven out of Syria today date their presence back to Ignatius," she noted.

The church has had its martyrs here, too, she noted, including many who brought the Gospel to the plains frontier.

"There is an old saying," she said, "that 'the blood of the martyrs is the seed of the church.'"

"Lay people must be our foremost missionaries.... Until Jesus comes back again, we will never end our witnessing and

our suffering."

At one point, she lamented that the church has come to the point where those who disagree leave "because we are not narrow enough."

The bishop, who is stepping down at the end of her nine-year term leading the national and international organization of the U.S.-based church, noted that this is her third visit to the Diocese of Western Kansas. She was accompanied by her husband, Dr. Richard Schori, a professor.

Atwood, Colby ally hospitals

From "HOSPITALS," Page 1

said. He will be at the Rawlins Clinic to see patients four half days a month while continuing his practice in Colby.

Dr. Kellogg also will serve on the Atwood hospital's Risk Management Committee and as the chair of the Medical Staff Committee, provide quality assurance review, evaluate, advise and direct the care of nursing home residents by the practitioners there, the executives said. He will participate in development, approval and implementation of policies by the medical staff.

The contract will go into effect Saturday, Nov. 1, for two years. The announcement said Dr. Kellogg can see existing patients in Atwood and welcomes new patients.

"I am extremely excited to be partnering with Rawlins County Health Center," Dr. Kellogg said in the announcement. "I think it is great that we can work together for the population of northwest Kansas to better serve our patients."

"This partnership is a great way to meet the needs of northwest Kansas," said Scott Focke, director of clinical services at the Family Center for Health Care, part of the Citizens operation. "(Our clinic) is blessed with an excellent group of physi-

cians and midlevel providers, and we are excited to collaborate with Rawlins County in providing physician services to their health care system."

Cox, who started work in Atwood earlier this year, said Dr. Rodney Dill plans to retire from the staff in November and Dr. Kellogg will at least partly fill that void. The hospital will continue to look for a physician who would be a good fit there, she said, either on its own or in partnership with Citizens.

"We've had some cooperation with Citizens before," she said, "sharing things back and forth, but I believe this agreement takes it to a new level."

The alliance was welcomed by other staff members at the Atwood facility.

"The educational opportunities and physician sounding board; that this partnership will provide our midlevels will only help them grow as providers and allow us to continue to provide patient centered quality health care," said Amber Withington, chief nurse officer.

"I'm excited to be working with Dr. Kellogg and alongside Citizens' talented medical staff," said Kyle Herspring, a physician assistant at the Rawlins County hospital. "This partnership allows RCHC to extend the services we can provide to our communities."

After school program funding reduced

By Sam Dieter Colby Free Press sdieter@nwkansas.com

The Colby School Board got an update on the district's after-school program at its meeting Monday night, learning that the district will have to continue the program with less outside money.

Coordinator Kathy Vaughn gave an update on the program, which was started in the spring of 2013. Every Monday through Thursday, she said, more than 100 students come to Colby Grade School for academic and leisure activities designed to help them learn.

The school is in the third year of a grant from the 20th Century Community Learning Center which has paid for the program. That grant was cut by 40 percent this summer, Vaughn said, and

the district will have to pick up the slack to keep the program going until September 2017. After that, she said, it will have to support the program on its own.

Fees the board approved for kids in the program will not be enough to pick up the slack, Vaughn said, especially since kids who qualify for free and reduced-price lunches have to pay little or nothing. A few kids have left the program already because of the fees, she said.

There are 184 kids enrolled in the program this year, she told the board, but she is hoping for more after the football season ends. On average, 125 come each day, depending who has sports practice, games or other activities. Of the kids coming to the program, Vaughn said, 35 are in first grade, 40 in second, 27 in third, 25 in fourth, 20 in fifth and 15 from Sacred Heart School.

She said 55 kids came to the summer program in June and 40 signed up for tutoring sessions. Another 67 came to a "Jumpstart" program in August, although this was cut from two weeks to just one this year because of cuts to the grant.

Each afternoon starts with a healthy snack and continues on to the academic section, Vaughn said. After that, kids have a whole slew of fun activities, everything from basketball and taekwon do to cooking, photography and building Lego robots. The kids don't realize it, Vaughn said, but each of these activities relates to the Common Core standards used to measure schools today.

A total of 14 people work in the program, she said, full and part-time, including teachers and aids. Volunteers who help out include Colby Middle School students, church and community

members, and the kids' favorite, Colby Community College basketball players.

Partners includes the Thomas County Extension Office, the college, the Prairie Museum of Art and History, the Pioneer Memorial Library, the Retired Senior Volunteers Program, Big Brothers Big Sisters of Thomas County, the Thomas County Coalition and the Colby police and fire departments. All help out in some way, Vaughn said, such as when the police, firefighters, emergency medical technicians and sheriff's deputies taught kids how to be ride safely during the program's "bike rodeo" last week.

Volunteers for the program are not screened for criminal history, Vaughn said, but school staff are, and volunteers are never alone with children without a school employee present.

Briefly

The deadline for Briefly is noon the day before. Items submitted in the morning will be set up for the following day, space available. The deadline for Monday's paper is noon Friday.

Colby Public Schools grade cards delayed

Due to a catastrophic hardware failure, PowerSchool has been offline for all Colby Public School users. Please know the district is working diligently to rectify the situation. Check their website at www.colbyeagles.org for updates, or call the administration building at 460-5000.

Genesis gears up for holiday project.

Genesis-Thomas County food bank plans again to help feed hungry Thomas County families during the holidays. Anyone interested in receiving a food basket should pick up forms from 10 a.m. to noon and 1 to 4 p.m. Wednesdays at the office, 350 S. Range Ave., Suite 13, or call the food bank at 460-7930. Forms are also available at the library, the Thomas County Health Department and the Kansas Department for Children and Families office. These must be returned by Thursday, Nov. 6.

Colby Head Start taking applications

Thomas County Head Start, a free preschool for kids who qualify, is accepting applications throughout the year for 3- and 4-year-olds. Children must have been 3 by Sept. 1, 2014. Those with disabilities welcome. For information, call the Head Start office at 460-6067.

Christmas greenery orders due by Nov. 2

The Colby Presbyterian Women are selling fresh Christmas greenery - wreaths, garlands and centerpieces - to raise money for mission projects. Orders are due by Sunday, Nov. 2. For prices, information or to orders, call the church at 462-6342 or JoAnne Sunderman at 460-2476. Delivery will be the first week in December.

Advance voting open at courthouse

Early voting has begun at the Thomas County clerk's office. Hours are 8 a.m. to 4:30 p.m. Monday to Friday until Monday, Nov. 3, the day before elections. Advance voting must be shut down by 4:30 every day to upload a count. For information, call the clerk's office at 460-4500.

Construction shifts emergency room entry

Due to construction, access to the Citizens Medical Center emergency room beginning Monday will be through the southwest "birthing room" entrance off Franklin Ave. Concrete work between the hospital and clinic will close off the College Drive entrance. For information, contact Megan Carmichael at 460-1214.

Used books haunt library's sale shelves

You'll find some hauntingly good bargains at gravely low prices during the Spooktacular Book Sale at the Pioneer Memorial Library, which continues from 9 a.m. to 4:30 p.m. Friday and 10 a.m. to 3:30 p.m. Saturday. For information, call the library at 460-4470.

Archaeology group to study Rawlins site

The fall meeting of the High Plains Chapter, Kansas Anthropological Association, will include an introduction to the Burntwood Creek Archeological Site in Rawlins County. Colby Community College Professor Linda Davis-Stephens will give an overview of the site from 1:15 to 2 p.m. Saturday at the Prairie Museum of Art and History. A site visit will be offered for association members, weather permitting. For details, contact Rob Aiken at (785) 462-6399 or raiken@sttel.net

Once a Month Lunch coming up Saturday

Once a Month Lunch will be served from 11:30 a.m. to 12:30 p.m. Saturday at the First Presbyterian Church, 515 W. Fourth St. This free meal is served to all who come the second Saturday of each month. No reservation. For questions, call Radonda Buford at 462-2804.

Sacred Heart auction set for Saturday

The 17th Annual Sacred Heart Parish Auction will be Saturday at the City Limits Convention Center. For tickets, contact Kathy Britton at 462-2179.

Haunted House set to scare at fairgrounds

The American Youth Soccer Organization's haunted house, "Return of the Haunted Pirates," will be open at 7 p.m. Friday and Saturday and Thursday to Saturday, Oct. 30 to Nov. 1, at the Thomas County Fairgrounds. A children's matinee will run from 1 to 7 p.m. Sunday, Oct. 26, for \$4. General admission is \$7. For information, call Emily Griffin at 443-5884.

LOCAL TV LISTINGS sponsored by the COLBY FREE PRESS

SATURDAY EVENING OCTOBER 25, 2014 SUNDAY EVENING OCTOBER 26, 2014

Table with columns for time slots (7:00, 7:30, 8:00, 8:30, 9:00, 9:30, 10:00, 10:30, 11:00, 11:30) and rows for various channels (ABC, CBS, NBC, FOX, ION, A&E, AMC, ANIMAL, BET, BRAVO, CARTOON, CMT, CNN, COMEDY, DISCOVERY, DISNEY, E!, ESPN, ESPN2, FAMILY, FOOD, FX, HGTV, HISTORY, LIFETIME, MTV, NICK, SPIKE, SYFY, TBS, TCM, TLC, TNT, TRAVEL, TV LAND, USA, VH1, WGN, HBO, MAX, SHOW).

Table with columns for time slots (7:00, 7:30, 8:00, 8:30, 9:00, 9:30, 10:00, 10:30, 11:00, 11:30) and rows for various channels (ABC, CBS, NBC, FOX, ION, A&E, AMC, ANIMAL, BET, BRAVO, CARTOON, CMT, CNN, COMEDY, DISCOVERY, DISNEY, E!, ESPN, ESPN2, FAMILY, FOOD, FX, HGTV, HISTORY, LIFETIME, MTV, NICK, SPIKE, SYFY, TBS, TCM, TLC, TNT, TRAVEL, TV LAND, USA, VH1, WGN, HBO, MAX, SHOW).





# BUSINESS DIRECTORY

**TO HAVE YOUR AD PLACED IN THE BUSINESS DIRECTORY CALL KATHRYN OR SHARON TODAY AT (785)462-3963**

**THIS COULD BE YOUR AD! Call Today! 785-462-3963**

**Mobile Home Lots for Rent**  
 \$190 Month (includes water, sewer & storage shed)  
**FREE** Month with approved application  
**Friendly Acres Mobile Home Park**  
 1150 S. Franklin, Colby  
 Call 785-462-6445

**New Beginnings Counseling Services**  
**J. Douglas Finley, LCSW**  
 422 Smith Drive, Colby  
**FIRST SESSION FREE**  
 785-462-3308  
 Immediate Appointments In Office or Virtual

**Dr. Tom Barlow DENTIST**  
 785-460-7538  
 Appointments Readily Available  
 505 H N. Franklin, Colby

**LASERS BY TALIA**  
 LOOK BETTER, FEEL BETTER  
 We now have **Obagi Medical skin care, and BOTOX is coming soon!**

- Laser hair removal
- Ultrasonic slimming
- Teeth whitening

Mon. & Wed.: 12-6 p.m.  
 Tuesday, Thurs., Fri.: 8AM-5PM  
 Appointments also available after hours.  
 1580 Rose Avenue  
 Burlington, CO 80807  
**Phone: (719) 346-4640**



**Laura Barger Massage Therapist**

*Prenatal Massage*      *Swedish Massage*  
*Sports Massage*      *Hot Stone Massage*

Available For Appointments in Colby, Atwood and McCook  
 220 N. Mission Ridge, Colby      Laura Barger  
 www.LauraBargerLMT.com      Licensed Massage Therapist  
 la\_barger@hotmail.com      (308) 882-0029

**LINDSEY D. MOORE**  
 Attorney at Law, General Practice  
 330 N. Lake Ave. | P.O. Box 627  
 Colby, KS 67701  
 moorelaw@st-tel.net  
 Phone No. (785) 460-0591  
 Fax No. (785) 460-0595



**ROOFMASTERS**  
 Serving Colby for over 30 YEARS!  
 425 East Hill, Colby, KS

<b>RESIDENTIAL</b> Heritage Shingles Wood Shingles IR Shingles Stone Coated Steel Metal Panels	<b>COMMERCIAL</b> EPDM Rubber White TPO Single Ply Modified Systems Built up Systems Elastomeric Coating
---	---

785-462-6642  
 Licensed Bonded Insured  
**FREE ESTIMATES**  
**WHO YA GONNA CALL?**

**Nancy LePell Bookkeeping**  
 165 East 3rd - Colby, KS 67701  
 785-462-7428

Income Tax Preparation - Individual, Business and Estates  
 Accounting and Bookkeeping  
 Business and Financial consultation

Christy Griffith, RTRP      Nancy LePell, EA, ChFC, CB  
 Working to bring you the best possible solutions

**SPECIALIZING IN CUSTOMIZED STEEL AND POST FRAME BUILDINGS**

**We will beat ANY Northwest Kansas competitor's price on a comparable project!!**

605 North 10th Street | Atwood, KS 67730 | vapconstruction.com | 866-492-1978




**Colby Salvage Metal Co., Inc.**  
 1150 PLAINS AVENUE, COLBY, KANSAS

1-800-631-2711      785-462-2711

GLENN GRIFFIN      LUCAS MOORE      TRACY GRIFFIN

*Buying Non-ferrous Metals and Recycling in the Tri-State Area Since 1967*

**NEW SYSTEM PROFESSIONAL WINDOW CLEANING**  
**(785) 462-6995**  
**(800) 611-6735**  
 www.MyWindowCleaner.net  
 Serving Colby since 1992!  
**Commercial • Residential • Free Estimates**




What's precious to you is precious to us.<sup>SM</sup>  
**Auto. Home. Life. Retirement.** They all matter, so wrap them all in a blanket of Nationwide® protection. We put members first, because we don't have shareholders.<sup>SM</sup>

**Join the Nation that knows what's important.**  
 Combine your policies and save up to 25%

**Nationwide** is on your side

**Shirley D Skolout**  
 Mountain Plains Agency  
 Phone: (785)460-6284  
 skolost@nationwide.com



**Coverage & Service You Can Count On**

Farming is your livelihood and no one understands that better than Farm Bureau. Our companies were originally founded 74 years ago to serve the needs of farmers. Today you can continue to rely on us to be your one-stop resource for protecting what matters most – your operation, family and future.

Call today to see how I make insurance simple.

**FARM BUREAU FINANCIAL SERVICES**

**Vernon Hurd**  
 550 N. Franklin Ave.  
 Colby, KS  
 785-269-9511  
 www.VernonHurd.com

Auto | Home | Life | Annuities | Farm/Ranch | Commercial Ag | Crop | Business

Securities & services offered through FBL Marketing Services, LLC, 5400 University Ave., West Des Moines, IA 50266, 877/850-2904, Member SIPC, Farm Bureau Property & Casualty Insurance Company, Western Agricultural Insurance Company, Farm Bureau Life Insurance Company, West Des Moines, IA. \*Affiliates \*Company providers of Farm Bureau Financial Services PC055-ML-1 (4-13)

**KANSAS Insurance INC**  
 Formerly THOMAS county INSURANCE AGENCY

**490 N. Franklin**  
**785-462-3939**

- Home & Auto
- Farm & Crop
- Business Insurance
- Boat, Motorcycle, RV

**Nationwide Agribusiness**  
 On Your Side®

**Dennis Tubbs**  
 dtubbs@kansasins.com

www.kansasins.com



**One combined policy + One deductible for it all**  
**One big sigh of relief**

When things go wrong, you need your insurance to go right. Contact me to see how our **one deductible advantage** can help provide you peace of mind when you need it most.

**David Browne III**  
 550 N Franklin Ave  
 Colby, KS 67701  
 785-462-3388

**FARM BUREAU FINANCIAL SERVICES**  
 Insurance • Investments

Auto | Home | Life | Business | College | Retirement

The deductible per occurrence. Securities & services offered through FBL Marketing Services, LLC, 5400 University Ave., West Des Moines, IA 50266, 877/850-2904, Member SIPC, Farm Bureau Property & Casualty Insurance Company, Western Agricultural Insurance Company, Farm Bureau Life Insurance Company, West Des Moines, IA. \*Affiliates \*Company providers of Farm Bureau Financial Services PC055-ML-1 (4-13)

**Langer Industrial Service**  
 2022 County Road 11 • Levant, KS 67743 • 785-586-2208  
 Monday - Friday 8 a.m. - 5 p.m.

**We pay cash up to for all scrap metal\***

- Brass • Copper • Aluminum • Batteries • Electric motors • Cars
- Combines • Farm Equipment • Prepared/Unprepared Iron and Tin
- Container Service • Off site baling and car crushing
- Limited pickup service available

*Schedule deliveries after normal business hours by appointment when necessary.*  
 \* Some Conditions Apply

**C.W. Beamgard Co. Inc.**



SALES & SERVICES SINCE 1919

- New Vehicle Sales
- Service
- Used Vehicle Sales
- Windshield Pit Repair
- Parts
- Tires
- Accessories
- Towing Service

Monday - Friday 8-6, Saturday 8-Noon  
**785.626.3286**  
**Fax 785.626.3717**  
 210 State St. • Atwood, KS 67730

**Meadow Lake Restaurant & Lounge**

- Open to the Public •

**Monday Nights \$1 Draws**  
**Saturday Nights Prime Rib**

*Our kitchen is open Mon - Sat, 5 - 9 p.m.*

**MEADOW LAKE**  
 GOLF COURSE & RESTAURANT  
**785-460-6443**  
 1085 E Golf Club Rd. • Colby, KS




**MURRAY ROOFING & CONSTRUCTION**

RESIDENTIAL • COMMERCIAL • INDUSTRIAL

**Residential:**  
 • Roofing  
 • Construction  
 • Remodels  
 • Blown in Insulation

**Commercial:**  
 -TPO, EPDM, Duro-Last, Modified, Fibered and Non-Fibered roof coatings.

**THE WORLD'S DURO-FAST BEST ROOF**  
 Elite Duro-Last Contractor

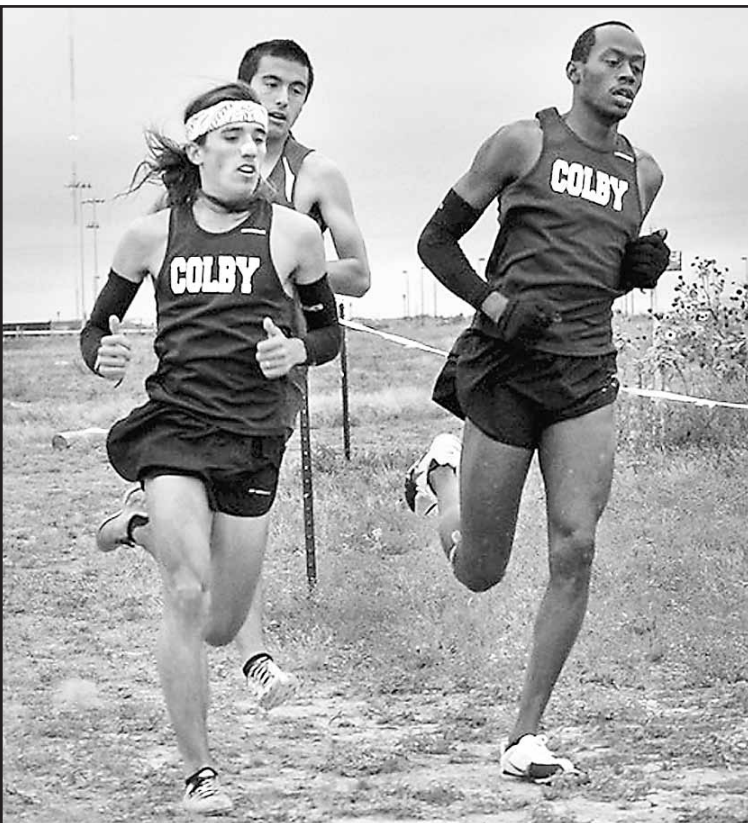
Fully Insured, Bonded, Licensed and Covered by workman's Comp.  
**Office: 785-462-6908**  
 Owner: 785-443-1339

CHECK OUT OUR WEBSITE FOR MORE INFORMATION:  
**www.MurrayEnterprises.org**







Colby Community College

All-Americans Chris Speaks, left, and Michael Kinuthia will be leading Colby Community College's quest for a Region VI "three-peat" championship on Saturday at Meadow Lake Golf Course.

# Super race about to hit Colby

## Trojans want nothing less than Region VI title 'three-peat'

By R.B. Headley  
*Colby Free Press*  
rbheadley@nwkans.com

Artists can be seen running through the streets of Colby almost every day.

Sculpting, building, toning their energy and focus on marvelous days like Saturday at Meadow Lake Golf Course.

And now, every Colby resident who's willing to step outside after breakfast can see what these efforts are all about.

Colby Community College's cross country teams are home for something that surely won't arrive again for at least six or seven more years:

The Region VI championship meet.

"Running is our art, and hopefully a team title will be our mas-

terpiece," Colby men's coach James Ortiz said.

"You look at the national rankings, and there will be about five or six of the top 15 (junior college) teams running here," he added about the Saturday 11 a.m. men's race at Meadow Lake.

The 10 a.m. women's race should bring similar greatness considering that No. 8 Butler, No. 10 Pratt, No. 14 Dodge City and No. 15 Garden City will be competing along with coach Crystal Berndt's improving Trojan women.

Yet drama definitely steps up to another level because Ortiz's Colby men are two-time defending Region VI and Jayhawk Conference champions.

"We hadn't won any (region) titles until two years ago, and now we have a chance to win three,"

Ortiz said. "But there's really no pressure on us. We know we'll be there if we run like we do every day."

Colby's ranked No. 6 in the new estnational poll released today on njcaa.org.

Even better is how Colby's tied with No. 6 Allen County, who would love to avenge a second-place finish behind Colby at last year's Region VI race.

"I expect they (Allen County) will be our main (challenger) again," Ortiz confirmed. "But there a lot of good teams all coming from the Jayhawk."

Indeed, Highland holds the No. 8 national spot after Colby and Allen County.

Butler checks in at No. 12 while Pratt appears just two spots (14th) just below those Grizzlies.

All these teams will bring run-

ners ready to challenge the Trojans.

Few have ever outraced Colby's All-American combination of Chris Speaks and Michael Kinuthia. They've dominated both cross country and track races.

"They'll be leading us again Saturday," Ortiz said. "They look different, have different strengths and are from different parts of the world (Texas, Kenya). But they are similar in that they are beautiful runners."

Other Trojans who will be ready to repeat this championship effort include sophomores Adrian Guevara, Noe Belmares and Collin Grueber.

The Region VI race around and across Meadow Lake will be Colby's final steps before their annual national championship quest.

On Nov. 8, the National Junior College Athletic Association Cross Country title chase will take place in South Plains, Tex.

Watch for more details and Region VI results next week.

# Champion Colby rides high at home show

By Debbie Schwanke

*Colby Community College*

The Colby Community College western riders ended their home show last weekend at the High Point Team in Sunday's show.

"We put on a fantastic show and the weather cooperated for a beautiful weekend," coach Shanda Mattix said. "A big thanks to all the family, friends, alumni and supporters who came to help host the show and provide additional horses."

A total of 10 teams attended the competition: University of Nebraska-Lincoln, University of Wyoming, U.S. Air Force Academy, Colorado School of Mines, University of Colorado Western, University of Nebraska-Omaha, Laramie (Wyo.) County Community College, Oklahoma Panhandle State University, Cloud County Community College and Colby.

Colby's Jade Kruse won the open reining shows both Saturday and Sunday.

"This is exactly how we want to start the semester of western competitions," Mattix said. "Jade Kruse was recognized as Reserve High Point rider at Saturday's show and was awarded High Point Rider at Sunday's show."

Colby's Megan Kantor earned points at this show to qualify for the regional championships in Novice Horsemanship, Mattix added.

All Colby Community College results:

Open Reining, Show 1: 1. Jade Kruse.

Open Horsemanship, Show 1: 4. Kruse.

Novice Horsemanship, Show 1: 3. Cheyanne Becker, 4. Megan Kantor.

Intermediate 2 Horsemanship, Show 1: 2. Mikaela Brackney, 2. Allyson Dorrell, 4. Allie Siemens, 6. Jordan Harms.

Intermediate 1 Horsemanship, Show 1: 1. Mackenzie Hansen, 3. Kirsten Bandy, 4. Janell Ptacek.



R.B. HEADLEY/Colby Free Press

Beautifully bright 70-degree weather set the scene for a successful Colby Community College western riding show at the college farm Saturday and Sunday. The Colby team took first while competing against 10 teams from five states. Many of Colby's riders earned high places like Stephanie Hager (left), who impressed judges enough to take third in the Beginner Horsemanship, Show 2. Many observers took notice of the Intermediate 1 competition (below left) and Colby's Mackenzie Hansen placed second behind champion teammate Janell Ptacek. High honors also went to Colby's Jade Kruse as Reserve High Point rider. Many furry friends were also invested in the two-day competition with two canines (below) paying close attention, perhaps wondering how or when they might be allowed to join in the fun. The Colby team competes next at a University of Nebraska-Lincoln hunt seat show on Nov. 8-9.



Beginner Horsemanship, Show 1: 3. Amanda Rubottom, 3. Kelsey Simpson, 4. Jody Luetters.  
Open Reining, Show 2: 1. Kruse.  
Open Horsemanship, Show 2: 2. Kruse.  
Advanced Horsemanship, Show 2: 2. Kantor.  
Novice Horsemanship, Show 2: 2. Becker.  
Intermediate 2 Horsemanship, Show 2: 2. Rubottom, 3. Simpson, 3. Hager.



The next competition is a hunt seat show hosted by the University of Nebraska-Lincoln on Nov. 8-9.

# Cloud hangs around long enough to top Trojans

The Cloud County-Colby Community College volleyball match was as good as expected with

Cloud finally winning a five-set Jayhawk Conference match Wednesday night at Colby.

Watch for more details Friday. Colby won a terrific 26-24 fourth set after Cloud had won two of the first three — all finish-

ing by scores of 25-22. The visitors took control of that decisive fifth set and won 15-10. Cloud County (18-6 overall,

10-4 league) breaks a second-place tie in the Jayhawk West with Colby (14-18, 9-5 league).

Boiling over with anger, Strickland yelled into his glove, then got into a shouting match with Perez as the big, burly catcher headed for home. Players spilled out of both dugouts, and several Royals streamed in from the bullpen. "He started to look at me, so I asked him like, 'Hey, why you look at me?'" Perez said. "So he was telling me, 'Get out of here, whatever.' So I don't know. You don't have to treat me like that. Look at Omar. Omar hit a bomb. I didn't hit a bomb. I hit a double."

# Eagles attack 'Cats

Senior Josh Matchell nearly made a first down on every rush while junior Matthew Pieper gained 90 yards for Colby High against Concordia Friday evening.

Matchell's 69 yards on seven carries sparked the Eagles' comeback that featured three second-half touchdowns. Pieper popped free on a quick-hitting 65-yard run to set up Colby's first TD.

Overall, the Eagles gained 246 yards on 40 rush attempts (6.2 average). They just needed a little more to overcome Drake Hake's 334 and three scores during the 28-18 Concordia victory.

A glance at all Eagle leaders from Friday according to statistics on maxpreps.com:

**Offense**

**Rushing:** Matthew Pieper 11 carries-90 yards, Ben Matchell 12-72, Josh Matchell 7-69 (2 touchdowns), Brady Holzmeister

8-10, Shevin Martin 1-1.

**Passing:** Josh Matchell 7 completions-19 attempts-79 yards-1 touchdown-1 interception.

**Receiving:** Ben Matchell 4 catches-28 yards-1 touchdown; Holzmeister 2-23, Pieper 1-20, Austin Russ 1-8.

**All-purpose yards** (rushing, receiving, kick returning): Pieper 110, Ben Matchell 94, Josh Matchell 69, Holzmeister 33.

**Defense**

**Total tackles:** Ben Matchell 12 (4 solos), Tate Carney 5 (5 solos), Holzmeister 5 (3 solos), Alex Young 4 (3 solos), Donte Whitfield 4 (2 solos), Eric Schuette 2 (2 solos), Bryce Aramberger 2, Brady Slinger 1 (solo), Martin 1 (solo), Pieper 1.

**Tackles for loss:** Young, Carney. **Takeaways:** Austin Hart (fumble recovery) and Ethan Jay (fumble recovery).



REBEL JAY

Colby High blockers pushed Conordia Panthers back enough to gain nearly 250 rushing yards at Dennen Field Friday night. The Eagles visit Clay Center on Friday for another district challenge.

# Colby gets ready for escaping Tigers

By R.B. Headley

*Colby Free Press*  
rbheadley@nwkans.com

Can Colby High finish what the Goodland Cowboys failed to do? Closing the door on 'Cats will be a No. 1 goal when Colby visits the Clay Center Tigers at 7 p.m. on Friday in Clay Center.

The Cowboys had their shot during last week's district football opener, but they missed a field goal with five seconds remaining as those Tigers escaped, 14-13.

Don't be surprised if week two of district play isn't just about as tight.

The Eagles (1-6 overall, 0-1 district) almost certainly need to win their final two games for any

4A state playoff homes. They visit Goodland on Halloween night after taking this "slightly" farther road trip to Clay Center Friday.

The Tigers (3-4, 0-1) have been far from terrifying, losing 39-21 to Abilene and 14-6 against Wamego before edging Goodland last weekend.

Clay Center's other wins are 6-0 over Rock Creek and a 39-13 conquest of Maryville.

Colby-Clay Center highlights an area football schedule with just two other contests: Triplains-Brewster (4-3 record) will be home for Weskan while Golden Plains (0-7) tackles its home finale vs. Hoxie (4-3). Unbeaten Heartland Christian (7-0) is taking a "bye" week.