



Daylight savings time begins Sunday

75¢

Friday

March 7, 2014
Volume 125, Number 38
Serving Thomas County since 1888

10 pages



COLBY FREE PRESS

Court says school funding too low

By John Milburn
The Associated Press

TOPEKA – The Kansas Supreme Court said today the state's current public school funding levels are unconstitutional.

In the much-anticipated ruling, the court said Kansas' poor school districts were harmed when the state cut certain payments when tax revenues declined during the Great Recession.

The Supreme Court sent the case back to a district court panel for more review to "promptly" determine what the "adequate" amount of funding should be, but didn't set a deadline for a hearing. It did, however, set a July 1 deadline for legislators to restore money for two funds aimed at helping poorer districts with capital improvements and general school operations.

A state Department of Education official estimates legislators would have to increase funding by \$129

million, in addition to the more than \$3 billion the state has budgeted for the 2014-2015 school year.

The case also has broader implications beyond the classroom: Kansas enacted sweeping cuts to income taxes in 2012 and 2013 championed by Gov. Sam Brownback that have reduced the cash flow needed to comply. Lawmakers could be forced to reconsider the tax measures, which Kansas and other Republican-run states have pushed as a means to stimulate their economies.

Kansas legislators had delayed any decisions on school funding until the high court made a final judgment.

The lawsuit was filed in 2010 on behalf of parents and school districts, who argued the state had harmed students because spending cuts resulted in lower test scores. State lawyers maintained that legislators did their best to minimize cuts to education.

See "SCHOOL," Page 2

Farm Bill changes yet to be realized

By Sam Dieter
Colby Free Press
sdieter@nwkansan.com

A small group of farmers and federal and state officials talked over coffee Thursday afternoon about help available for conservation "practices," or improvements, on farmland.

A dozen people visited the "coffee shop talk" at the Thomas County Office Complex to hear about programs offered by the U.S. Natural Resources Conservation Service and Farm Service Agency, the Kansas Department of Wildlife, Parks and Tourism and the Kansas Alliance for Wetlands and Streams. Officials talked about how the new 2014 Farm Bill changed each of their programs when it was passed last month, though in several cases, they were still not sure what the changes were.

Lynn Thurlow, soil conservationist for the

National Resources Conservation District in Salina, updated the group on Wetland Reserve Program easements. The 10-year easement is no longer, offered, he said, so landowners can now get either 30-year and or lifelong contracts.

The bill changed the length of time a farmer or rancher has to have owned the land on an easement, Thurlow said, from seven years to two. All people whose names are on a deed have to be involved. The Farm Service Agency will be notified of the easement and terminate any payments that go to the farmer from the Conservation Reserve Program, he said, because the farmer cannot get payments on the same land from both agencies at once.

Before the new bill passed, farmers could get an easement for wetlands and a surrounding buffer of grassland on a 1-to-1

See "FARM BILL," Page 2

Housing district approved by city

By Sam Dieter
Colby Free Press
sdieter@nwkansan.com

The Colby City Council approved a new Rural Housing Incentive District along South Range Avenue after a public hearing at its meeting Tuesday night to help build new houses in town.

Ross Vogel with Rural Housing Partners was the only one to comment during the brief public hearing. He told the council that even larger towns have few new housing units, and that he hopes his company's

project is the catalyst for more housing being built in town. Vogel's company plans to build eight houses in the district between Sewell Avenue and Dylan Drive. The district includes about 20 lots in that area. State law allows cities with fewer than 60,000 people in a county of fewer than 80,000 to establish such a district.

Rural Housing Partners is the developer, Vogel said, but the project will be built by Hoxie-based Bainter Construction in connection with the senior living and moder-

See "HOUSING," Page 2

Change clocks, batteries

Daylight Saving Time begins Sunday, and as people prepare to "spring ahead" one hour, the state Fire Marshal's Office urges people to test their smoke alarms and changing the batteries this weekend.

"The industry standard for that (changing batteries) is at least once a year," Colby Assistant Fire Chief Sean Hankin said, "and most folks will do that in conjunction with the time change."

People can pick one of the time changes to switch out their smoke alarm batteries, Hankin said. The Colby Fire Department even runs a campaign to help people change their batteries during the fall time change.

"Ensuring you have working smoke alarms in your home is the single most important step you can take to increase your family's safety from a home fire," said state Fire Marshal Doug Jorgensen. "Your risk of dying in a fire is greatly reduced when your home is equipped with working smoke alarms."

The National Fire Protection Association

says almost two-thirds of deaths in home fires are in properties without working smoke alarms. Here are some safety tips:

- Install smoke alarms in every bedroom, outside each sleeping area and on every level of your home, including in the basement.
- Smoke alarms with non-replaceable long-life batteries remain effective for up to 10 years. If the alarm chirps, warning that the battery is low, replace the entire unit.
- For alarms with any other type of battery, replace batteries at least once a year. If that alarm chirps, replace only the battery. Date each unit when they are installed and replace them after 10 years, sooner if they do not sound when the test button is pressed.
- It is good to practice a family escape plan:
 - Plan and practice two escape routes out of every room in your house.
 - Designate an outside meeting place.
 - In case of fire, call 911 after you are safely outside the home.
 - Once outside, stay outside and don't return for anything – not even a pet.



Fish migrate to pond



SAM DIETER/Colby Free Press
Dave Spalsbury (top, left), a fishing biologist with the Kansas Department of Wildlife Parks and Tourism, and Bill Murray, owner of Cedar Spring Trout Farm, hauled rainbow trout between trucks Tuesday afternoon at Villa High Pond. Spalsbury held one of the 500 trout (above, left) they put into the pond. Fish can be seen swimming out of the yellow hose (above) which they attached to the tank on the truck (left), breaking a hole in the ice on the pond. Duane Hebele of Colby watched the trout slide down the hose through the hole in the ice into the pond.

Rollover Thursday near Oakley

Two out-of-state women were taken to an area hospital Thursday after their car rolled off of Interstate 70 north of Oakley.

Valerie Zandoli, 49, Conway, New Hampshire, rolled off the highway about 6:10 a.m. Thursday, the Kansas Highway Patrol reported. The trooper

said she was headed west and started drifting off the highway and into the median near mile marker 72, east of the U.S. 83 interchange. Then she overcorrected and lost control of the 1993 Jeep Wrangler, which rolled a several times and came to rest on the passenger side. The driver and a passenger, Paula

Elizabeth Zandoli, 87, Washington, D.C., who were both wearing seat belts, were taken to Logan County Hospital for treatment, then released.



BUILD YOUR HOME FASTER & STRONGER WITH WARDCRAFT!
Pella windows, Moen faucets, 2x6 construction, Spider Fiber blown insulation & 18 cabinet choices STANDARD. Custom build.

Saturday March 29 OPEN HOUSE 10-3pm
1230 E 9th Minden, NE
614 Maple Clay Center, KS

Search for the Wardcraft Homes YouTube Channel

Minden Norton Astoria II Hanover II

Over 5,250 homes built since 1971

FREE 116 Page Catalog!
1-888-927-3272 www.wardcraft.com

Like Wardcraft Homes on Facebook

Weather

Farm Bill changes unrealized

From "FARM BILL," Page 1

ratio. Now, he said, western Kansas farmers can get an easement on a 1-to-4 ratio. In other words, with 10 acres of wetland, a farmer can get a 50-acre easement. A 300-foot strip of land around any streams between wetland areas - such as low-lying "playas" where water pools up - can be factored into the easement as well, he said, if it is less than a mile long. The wetlands have to have formed under natural conditions without interference from farmers.

He added that Thomas County landowners will get up \$2,430 for each acre they put in the program. This price applies to the from Trego County to the west. The 30-year easement will pay three quarters of what a permanent one pays. The government will pick up all the restoration costs for the land on a permanent easement, but the landowner will pay at least a quarter of costs for a 30-year easement.

When farmers sell an easement to the conservation service, Thurlow said, they still own the land itself, will still pay property taxes on it and retain the right to sell it, among others. Those rights include the quiet enjoyment and right to develop recreational opportunities and lease walk-in hunting rights to the state, he said.

Farmers also can keep everyone off their land except government officers who are monitoring the wetlands themselves. They still keep all the water and mineral rights, Thurlow said, but cannot take water or oil from that land. All oil exploration has to be done horizontally and under the earth. There can be no wells on the land, or even pivots that would put any water into the wetland outside of natural rainfall and runoff.

The conservationist said an irrigation pivot must be shut off as it moves over an easement. Oil companies can drive over the easement and explore the geology by seismograph, but cannot put test wells or connecting lines on top of the land. Landowners can put duck blinds on the land, he added, as long as they are removable and "rustic in nature."

Court says school funding too low

From "SCHOOL," Page 1

A three-judge panel in Shawnee County District Court said in January 2013 that the lawsuit was valid, and the state appealed that ruling to the high court.

John Robb, an attorney for the plaintiffs, saw today's ruling as a victory because the justices rejected the state's arguments that the issues in the case were political questions to be determined by the Legislature and governor.

He predicted that after the next round of lower-court hearings, the outcome will mirror what happened previously: An order for the state to increase its

total annual spending on schools by at least \$440 million.

"I see that we have to go around the block again," he said.

Robb also said that the general guidelines set by the high court to help determine how much the state must spend overall are in line with what the parents and school districts had suggested.

Brownback, Attorney General Derek Schmidt and legislative leaders scheduled a news conference to discuss the ruling.

"This is a complex decision that requires thoughtful review," Brownback said in a statement. "I will work with leadership in the Kansas Senate and House to

Ross Sloan with the Farm Service Agency said he was not sure how the new bill will affect conservation programs. He filled the group in on the Continuous Conservation Reserve Program as he knows it to exist now, saying later he does not expect it to change much. The sign-up incentive offers \$10 per acre, multiplied by the number of years on the contract. The practice incentive is based on half the per-acre cost of to restore the land, multiplied by 80 percent. Along with the cost-share itself, he said, the farmer also gets the incentive payment.

Sloan walked the group through a list of conservation practices farmers hand use under this program, such as windbreaks, grassy waterways, wetlands and wetland buffer zones and vegetation to reduce salinity. The program offers signing incentive payments and Practice Incentive Payments based on 10- or 15-year contracts. Unlike the regular Conservation Reserve Program, no haying and grazing is allowed.

Kurtis Meier, a biology technician with the Wildlife Department, told the group about the Hunting Access and Conservation Habitat programs. The Walk-In Hunting program includes access payments for any huntable land and much higher incentive payments for land enrolled in Farm Service programs. The department offers a \$20 incentive payment for every acre in Conservation Reserve, and a \$100 incentive payment for every acre in Continuous Conservation Reserve.

The money landowners get varies according to the season when it will be open, Meier said. The most lucrative lease, for \$4 an acre, is for land open from Sept. 1 to May 31, which covers turkey season. Land open from Sept. 1 to Jan. 31, which includes the upland game bird, dove and deer seasons, is worth \$2.50 an acre, and the cheapest, worth \$2 an acre, is land open only from Nov. 1 to Jan. 31, which includes mostly the upland game bird seasons. These amounts are paid for each year the land is in the program. Sign up for the program goes on through the end of May, Meier said, or until the department runs out of money to pay leases.

determine a path forward that honors our tradition of providing a quality education to every child and that keeps our schools open, our teachers teaching and our students learning."

House Speaker Ray Merrick, R-Stillwell, and Senate Minority Leader Anthony Hensley, D-Topeka, said they were reviewing the ruling.

Because no issues involving the U.S. Constitution were raised, no appeal is likely to the U.S. Supreme Court.

In the lawsuit, attorneys representing four school districts and parents alleged that Kansas reneged on promises.

Housing district approved by city council

From "HOUSING," Page 1

ate-income housing projects the company is working on near Sewell.

Bainter will raise the money and own the houses, Vogel said, adding that he hopes to break ground this spring. The homes will be priced between \$165,000 and \$170,000, which Vogel told the council in January is an uncommon price range in Colby.

City Manager Tyson McGreer made it clear that, contrary to recent rumors, the city will not put any money into project. The

housing district, he said, will be funded entirely by the companies working on the project.

When it first approved a resolution for the district in September, the council had discussed using bonds bought by the city to finance it. After Tuesday's meeting, McGreer said the district could have been funded by private investment or by bonds bought by the city, but that city officials had decided long before approving the district that it would not be funded by bonds.

For funding district improvement, McGreer said, the devel-

oper will be repaid out of tax revenue collected off the properties for up to 15 years. He said that will be the extent of the city's contribution to the project. He pointed out the lots have never had anything on them to produce tax revenue, so in a sense the city is not giving anything up.

According to the ordinance, the Thomas County commissioners and Colby Public Schools have 30 days after hearing to get the city to repeal the ordinance by passing a resolution that the district would have an adverse effect on them.

The city later approved another district of the same kind just south of the Colby Community College campus. This district, McGreer said, is meant to allow Bainter to build a moderate-income housing project on land it bought from the college in June. The company is already working on senior-living apartments along Sewell.

Briefly

The deadline for Briefly is noon the day before. Items submitted in the morning will be set up for the following day, space available. The deadline for Monday's paper is noon Friday.

Church meets in 4-H building

Join Celebration Community Church at the 4-H Building this month. The church will have services there at 10:45 a.m. each Sunday in March. It had been meeting at the Community Building. For information, call Pastor Kirby Benisch at (785) 769-4349.

Sacred Heart enrolling kids for preschool

Early enrollment is now open for Sacred Heart Catholic School's preschool and pre-kindergarten classes for the 2014-2015 year. For more information or to pre-enroll your child, call Sharon Shirley at 460-2813 before 8:30 a.m. or after 3:30 p.m. Monday through Friday.

Once a Month Lunch coming up Saturday

Once a Month Lunch will be from 11:30 a.m. to 12:30 p.m. Saturday at the First Presbyterian Church, 515 W. Fourth St. This free meal is served to all who come the second Saturday of each month. No reservations. For questions, call Leisa Hansen at 460-2710.

Ham and beans will send kids to band camp

The High Plains Lions will serve ham and beans, corn bread and dessert from 11 a.m. to 2 p.m. Saturday at Orscheln's in Colby. Donations will help send kids to Lions Band Camp. For information, call Roger Hale at 462-1172.

Breakfast will benefit Legion baseball team

A breakfast feed to support the Colby American Legion baseball team will run from 7 to 10 a.m. Saturday at the Colby Legion Hall, 1850 W. Fourth St. Make a donation; enjoy biscuits and gravy, hash browns and scrambled eggs; and support the 2014 youth baseball season of more than 30 games. For information, call coach Brian Quagliano at 443-0226.

Save money on a formal; support food bank

Buy a gently used formal dress for \$20 and support Genesis-Thomas County Food Bank. Sale will be from 5 to 8 p.m. Monday to Wednesday at the First Presbyterian Church, 515 W. Fourth St. For information or a special appointment, call Sue Draper at 460-6332.

Seniors plan potluck at Presbyterian Church

The group More Fun Together plans a potluck for people 50 or older who are alone, widowed, divorced, separated or have a partner in a nursing home at 6 p.m. Tuesday at the First Presbyterian Church. Bring a dish to share; table service and beverage will be provided. For information, call 462-6342.

Form team to march into Walk Kansas!

Warm weather is coming and so is Walk Kansas! Gather a group of six and register your team by next Friday, as Sunday, March 16, is the first day of the program. Go to www.thomas.ksu.edu or pick up a packet at the Thomas County Extension Office, 350 S. Range. For information, call 460-4582 or go to www.walkkansas.org

CHS serving spaghetti for Genesis effort

The CHS Colby Agronomy Center will have a benefit spaghetti dinner (meat and vegetarian) and bake sale from 5 to 8 p.m. next Friday at the Colby American Legion Hall for the the Genesis-Thomas County food bank. For information, call Michele Lorg at 462-6880.

Pickin' to have St. Patrick's Pub Party

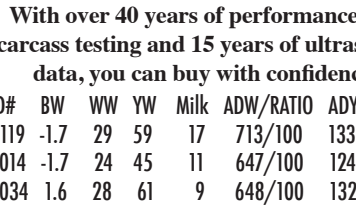
Proceeds from a St. Patrick's Day Pub Party on Saturday, March 15, at the City Limits Convention Center will go to the Pickin' on the Plains Bluegrass and Folk Festival. Wine and beer tasting will be from 6:30 to 8 p.m. DJ Justin Meitl will provide music from 8:30 to 9 p.m. and you can dance to the Mama's Boys from 9 to 11:30 p.m. Admission is \$20 each for the tasting party or the dance, or \$30 for the whole evening. Tickets are available at the Chamber office. For information, call 460-3401.

Brewster church plans feed for chimes

The Brewster United Methodist Church plans a biscuit-and-gravy feed from 5:30 to 7:30 p.m. Sunday, March 16. The offering will help updating the church's outdoor chimes. For information, call the church at (785) 694-2645.



National Weather Service Tonight: Rain and snow likely before 1 a.m., then a slight chance of snow between 1 a.m. and 4 a.m. Cloudy, with a low around 25. Blustery, with a north wind 15 to 20 mph decreasing to 10 to 15 mph after midnight. Winds could gust as high as 30 mph. Chance of precipitation is 70 percent. New snow accumulation of less than one inch possible. Saturday: Mostly sunny, with a high near 52. North wind 10 to 15 mph. Saturday Night: Clear, with a low around 29. North wind 5 to 10 mph becoming southwest after midnight. Sunday: Sunny, with a high near 70. Southwest wind 10 to 15 mph. Sunday Night: Mostly clear, with a low around 35. Monday: Sunny, with a high near 71. Monday Night: Partly cloudy, with a low around 39. Tuesday: A 30 percent chance of rain. Partly sunny, with a high near 47. Breezy. Tuesday Night: A slight chance of rain and snow. Mostly cloudy, with a low around 28. Blustery. Chance of precipitation is 20 percent. Wednesday: Mostly sunny, with a high near 48. Wednesday Night: Mostly clear, with a low around 25.



Thursdays: High, 73; Low 31 Precip: Thursday None Month: 0.02 inches Year: 0.51 inches Normal: 2.11 inches (K-State Experiment Station) Sunrise and Sunset Saturday 7:06 a.m. 6:44 p.m. First quarter moon at 7:27 a.m. Sunday 8:05 a.m. 7:45 p.m. Moon: waxing, 61 percent Monday 8:03 a.m. 7:46 p.m. Moon: waxing, 70 percent (U.S. Naval Observatory)



Thursdays: High, 73; Low 31 Precip: Thursday None Month: 0.02 inches Year: 0.51 inches Normal: 2.11 inches (K-State Experiment Station) Sunrise and Sunset Saturday 7:06 a.m. 6:44 p.m. First quarter moon at 7:27 a.m. Sunday 8:05 a.m. 7:45 p.m. Moon: waxing, 61 percent Monday 8:03 a.m. 7:46 p.m. Moon: waxing, 70 percent (U.S. Naval Observatory)

25th Annual Raile Charolais/Red Angus Production Sale Monday, March 17, 2014, 1 p.m. CST - St. Francis Auction Market, St. Francis Selling 73 Bulls, 42 Charolais, 23 Red Angus (4 are two year olds), 8 Range Fire Hybrids (Charolais x Red Angus) Selling 20 Females, 8 Top End Charolais, 7 Red Angus, 5 Charolais x Red Angus

Charolais Sires: Finks 2250, Finks 8823, Schurrtop J827, Raile Bluegrass X195, Raile Sovereign J827 Y064, AI Sire Lt Ledger 0332, These bulls will increase length, muscle, improve yield grade and marbling while increasing efficiency in the feed yard and cow herd

LOCAL TV Listings Sponsored by the COLBY FREE PRESS

Monday Evening March 10, 2014 Table listing TV programs from 7:00 to 11:30 on various channels including KAKE/ABC, KBSL/CBS, KSNK/NBC, KSAS/FOX, Cable Channels, and Premium Channels.

Other Viewpoints

Water is crucial for our way of life

The region's water supply remains a topic of grave concern. So, it was good to hear something positive on the Ogallala Aquifer, the underground water supply that helps sustain a region heavily dependent on agriculture.

A recent report showed the rate of depletion of the aquifer slowed last year.

In the southwest Kansas groundwater management district covering all or part of Grant, Haskell, Gray, Finney, Stanton, Ford, Morton, Stevens, Seward, Hamilton, Kearny and Meade counties, levels dropped 2.31 feet in 2013, after declining more than 11 feet collectively in the three previous years, according to data from the Kansas Geological Survey.

Late-season rains and a cooler summer helped ease water needs for farmers.

But as welcome as the news was, it could not drown out lingering concern over a water source considered the economic lifeblood of the region - especially in western Kansas, where water security is essential in powering ag operations.

That said, the issue isn't limited to western Kansas. Knowing it's a problem for the entire state, Gov. Sam Brownback called for more focus on the state's water issues, including depletion of the Ogallala Aquifer.

The challenge, though, is in getting something done. A diverse mix of aggressive strategies is needed to extend the life of the Ogallala and other aquifers, ranging from water conservation to the pursuit of more drought-resistant crops.

Even the notion of pumping water from the oft-swollen Missouri River west to nourish places across Kansas resurfaced after being floated in the early 1980s.

The 1982 High Plains Ogallala Aquifer Regional Resources Study by the federal Department of Commerce - done to satisfy a 1976 congressional mandate to examine declining water supplies in the High Plains - recently was dusted off for consideration.

Without a dramatic fix, an agriculture-driven economy that fuels many jobs and related ventures throughout Kansas will evaporate.

We know extraordinary problems demand extraordinary solutions. While policymakers say it's a priority, they need to devote more time and energy to remedying the state's water woes.

One encouraging year in terms of depletion represents just a drop in the bucket toward progress needed to reverse the costly toll on the aquifer.

- The Garden City Telegram, via the Associated Press

Where to write, call

State Sen. Ralph Ostmeyer, State Capitol Building, 300 SW 10th St., Room 136-E., Topeka, Kan. 66612, (785) 296-7399 Ralph.Ostmeyer@senate.ks.gov

State Rep. Ward Cassidy, (120th District) State Capitol Building, 300 SW 10th St., Room 151-S, Topeka, Kan., 66612, (785) 296-7616 ward.cassidy@house.ks.gov

State Rep. Don Hineman, (118th District) State Capitol Building, 300 SW 10th St., Room 50-S, Topeka, Kan., 66612, (785) 296-7636 don.hineman@house.ks.gov

COLBY FREE PRESS

155 W. Fifth St. (USPS 120-920) (785) 462-3963 Colby, Kan. 67701 fax (785) 462-7749

Send news to: colby.editor@nwkansas.com

State award-winning newspaper, General Excellence, Design & Layout, Columns, Editorial Writing, Sports Columns, News, Photography. Official newspaper of Thomas County, Colby, Brewster and Rexford.

Sharon Friedlander - Publisher sriedlander@nwkansas.com

NEWS

R.B. Headley - Sports Editor colby.sports@nwkansas.com

Marian Ballard - Copy Editor mballard@nwkansas.com

Sam Dieter - News Reporter colby.editor@nwkansas.com

Heather Alwin - Society Editor colby.society@nwkansas.com

ADVERTISING

Kathryn Ballard - Advertising Representative kb Ballard@nwkansas.com

Sharon Funk - Advertising Representative sfunk@nwkansas.com

Kylee Hunter - Graphic Design khunter@nwkansas.com

BUSINESS OFFICE

Office Manager

Melissa Edmondson - Office Manager medmondson@nwkansas.com

Evan Barnum - Systems Administrator support@nwkansas.com

NOR'WEST PRESS

Richard Westfahl - General Manager Gary Stewart, Foreman

Jim Jackson, Jim Bowker, Pressmen

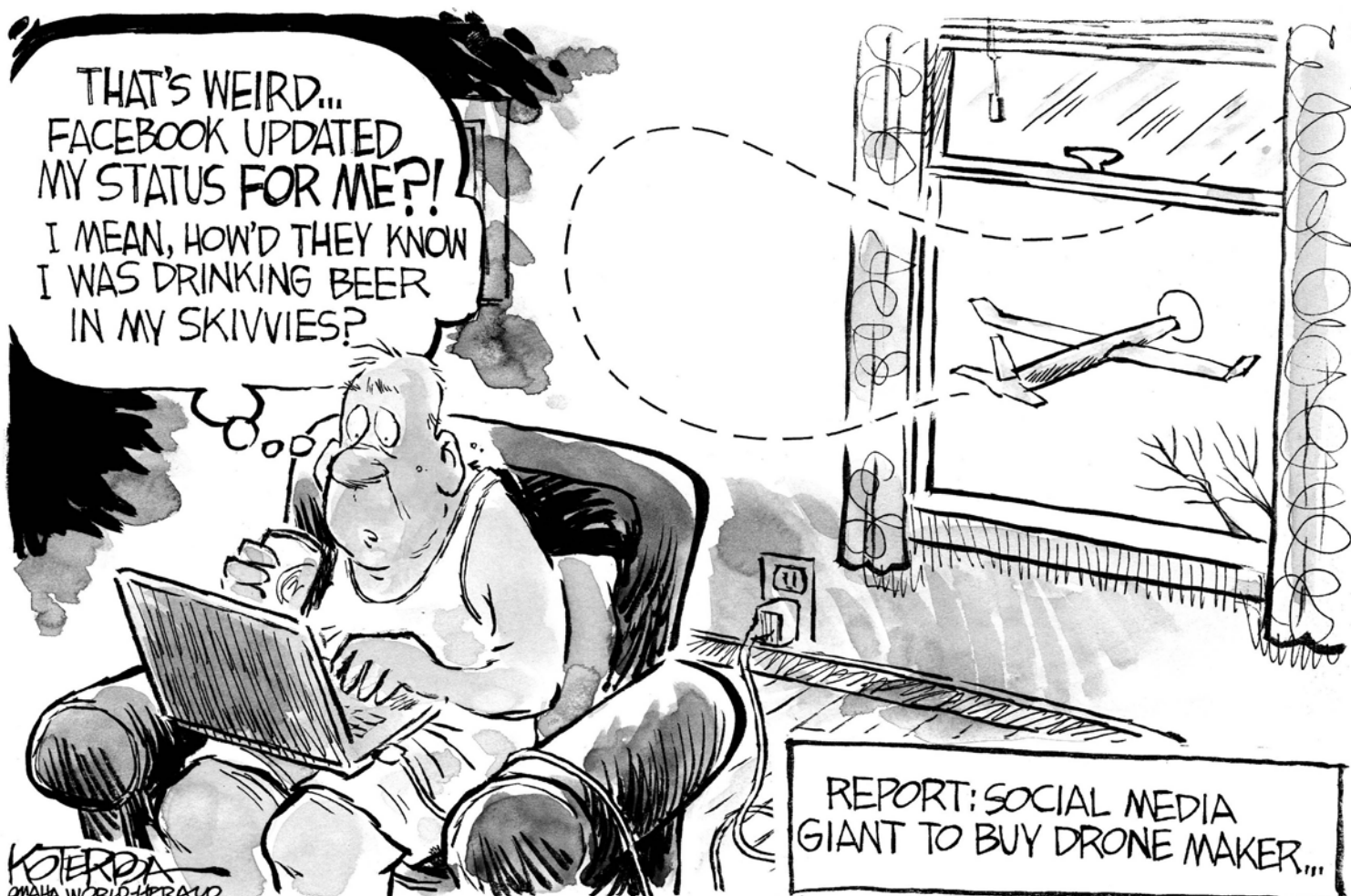
Kris McCool, Judy McKnight, Tracy Traxel, Sheri Arroyo, Mailing

THE COLBY FREE PRESS (USPS 120-920) is published every Monday, Wednesday, Thursday and Friday, except the days observed for Memorial Day, Independence Day, Labor Day, Thanksgiving Day, Christmas Day and New Year's Day, by Nor'West Newspaper, 155 W. Fifth St., Colby, Kan., 67701.

PERIODICALS POSTAGE paid at Colby, Kan. 67701, and at additional mailing offices. POSTMASTER: Send address changes to Colby Free Press, 155 W. Fifth St., Colby, Kan., 67701.

THE BUSINESS OFFICE at 155 W. Fifth is open from 8 a.m. to 6 p.m. Monday to Friday, closed Saturday and Sunday. MEMBER OF THE ASSOCIATED PRESS, which is exclusively entitled to the use for publication of all news herein. Member Kansas Press Association and National Newspaper Association.

SUBSCRIPTION RATES: In Colby, Thomas County and Oakley: three months \$35, one year \$85. By mail to ZIP Codes beginning with 676 and 677: three months \$39, one year \$95. Elsewhere in the U.S., mailed once per week: three months \$39, one year \$95. Student rate, nine months, in Colby, Thomas County and Oakley, \$64; mailed once per week elsewhere in the U.S. \$72.



Western Farm Show: something for all

Billed as "nearly everything an agribusiness professional would need or want," this year's 53rd edition of the Western Farm Show lived up to its slogan. More than 20,000 farmers, ranchers, school children, FFA youngsters and urbanites attended the three-day event at the American Royal Complex in Kansas City.

Farmers and ranchers spent hours walking around the 400,000 square feet of displays of machinery, buildings, livestock equipment, tools, feed and seed among the more than 500 exhibits.

Veteran Douglas County farmer Rex Slankard has been coming to this farm show since it started in 1961. Like so many of his peers, he attends the annual event to walk around and see what's new.

Slankard likes to compare the equipment and machinery to what he farms with. He's seen plenty of changes in agriculture and farm machinery during the last 50 years.

"Everything is getting to be so much about computer technology in farming today," Slankard says. "I'm getting too old for it. I've got to bring my grandson along to figure the computers out."

All kidding aside, the veteran producer believes farming is better with the new technology. Today's equipment lasts longer and is more dependable.

With technology like GPS a farmer can use



John Schlageck

• Insights Kansas Farm Bureau

the same tracks in his field every year and that cuts down on compaction, the Douglas County producer says. Planting and putting on herbicides and insecticides is more accurate and saves on production costs.

Coffey County stockman and hay producer, Jim McNabb traveled 200 miles round trip to attend this year's event. His son, Lee, accompanied him as well as his grandson, Max.

For the McNabbs and many other farmers and ranchers within a 300 mile radius, the Western Farm Show is a family tradition.

"It's enjoyable to take the family on a road trip off the farm and look at the latest equipment," McNabb says.

The biggest differences he sees during the 30 years of attending the show is the cost of the tractors, balers, buildings and other farm machinery.

McNabb is all business when checking out the new haying equipment. He puts up between 500 and 1,000 bales each year to feed

his hungry herd during the winter months so idle chit chat is out of the question.

"There are just too many people here," McNabb says. "Every once in a while you run into someone you know, but you can talk to them at home."

While most of the farm show goers include farmers and ranchers from Iowa, Kansas, Missouri and Nebraska, more than 3,400 high school students affiliated with FFA attend the three-day event, says Jeff Flora. He works for the SouthWestern Association and produces and manages the Western Farm Show.

Many people in the Kansas City area grew up on a farm or still have parents farming, Flora says. They drop by to look at the farm equipment and show their children what's happening in agriculture.

"This show provides a great opportunity to talk to manufacturers and suppliers without experiencing the pressure of buying such equipment," he says. "It kind of blows some of us away seeing what's going on in this industry today. It's like Star Wars kind of stuff in some cases."

John Schlageck of the Kansas Farm Bureau is a leading commentator on agriculture and rural Kansas. He grew up on a diversified farm near Seguin, and his writing reflects a lifetime of experience, knowledge and passion.

Senate action ranges from State Fair to ag

Last Friday marked the official halfway point of the 2014 session, which we refer to as turnaround.

All bills, aside from some exempt bills, must be passed by their chamber of origin by turnaround in order to be considered in the other house on the back half of this year's session. If a nonexempt bill is not passed by its chamber before this day, then it can't be considered.

Committees were working hard to pass final pieces of legislation that need to be studied this year. We planned to spend a lot of time on the Senate floor to discuss bills passed by committees so we could send them to the House.

Recently, Green Landscape rated Kansas among the top seven places in the world to watch the sunset. Falling fourth behind Greece, Cambodia and Finland, Kansas provides one of the few places in the world where you have unobstructed views of the entire sky, in the Flint Hills.

"Watching the sun go down can be a mesmerizing sight," the website says. "When you're planning your summer trip, take into account these seven places with the most stunning sunsets in the world."

Of course, we don't need Green Landscape to tell us how beautiful our state is, but it's great the rest of the world has a chance to see the best our state has to offer.

Last week, the Senate debated 20 bills which were passed on final action and sent to the House. The topics covered issues from allowing the State Fair to buy event insurance for entertainment acts (SB 315), to extending the "sunset," or expiration, of fees charged by the state Department of Agriculture (SB 286).

One notable bill will allow you to add your cell-phone number to the National Do Not Call Registry. As technology is changing, consumers are seeing more and more calls from telemarketers to their personal phones. SB 308 will allow Kansans to add their cell number to



Ralph Ostmeyer

• State Senator

the national list and also allow the Kansas Attorney General to enforce current law against telemarketers who call consumer's cell numbers listed on the registry. SB 308 passed the Senate 38-0.

The Senate also considered two bills, SB 354 and SB 355, which strengthen current laws of the financial mistreatment of an elder adult or dependent adults. Primarily, SB 354 gives prosecutors additional tools to charge anyone who takes advantage of a senior. Adult Protective Services says one in nine seniors has reported being abused, neglected or exploited. Offenders convicted of monetary abuse of a person over the age of 60 could be prosecuted under the Kansas Consumer Protection Act.

SB 355 would strengthen Kansas' power of attorney law to include more protection for seniors from anyone who is not acting in their best interest. The person having the power of Attorney, if abusing their power, could be terminated and face criminal prosecution. Both bills passed the Senate 38-0.

This past fall, the governor called a special session to amend Kansas 'Hard 50' sentencing procedures. The changes made during the two-day session changed sentencing laws for a defendant convicted of premeditated first-degree murder to ensure a jury, not a judge, hears evidence on whether a 50-year sentence should be imposed.

The changes were needed after the U.S. Supreme Court issued an opinion in a Virginia case that juries must decide sentencing. Senate

Substitute for HB 2387 establishes mandatory minimum of 50 years if a defendant is convicted of premeditated first-degree murder. Current Kansas law states a defendant convicted of premeditated first-degree murder serves at least 25 years unless a jury recommends otherwise. The bill passed the Senate, 35-3.

The Senate planned to debate many bills as we approached the Friday deadline. We typically consider items on General Orders on Tuesdays, Wednesdays and Thursdays to allow committees time to complete their work. We will spend most of our time on the floor completing debate on bills previously passed out of committees. Monday and Tuesday will also be the last days for committees to meet until March.

As always, I'll keep you updated on the items under consideration in the capitol and I encourage you, as questions arise, to contact me. Committee schedules, bills and other helpful information can be easily accessed through the legislature's website, www.kslegislature.org. I encourage you to let me know your thoughts on the issues discussed. Please feel free to call or e-mail me, and I'd be happy to chat with you regarding any topic.

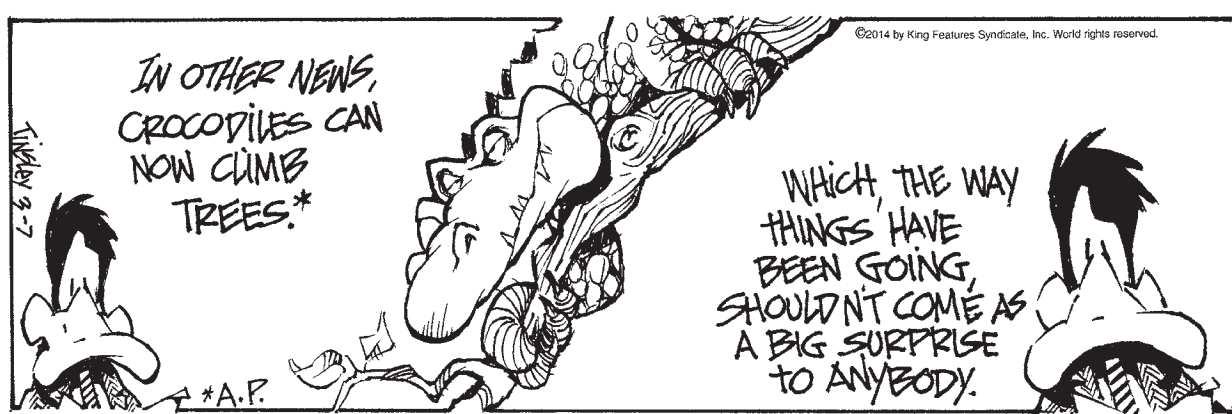
To reach Sen. Ralph Ostmeyer, write him at State Capitol, 300 SW 10th St., Room 136-E, Topeka, Kan. 66612, or call (785) 296-7399. His e-mail address is ostmeyer@senate.state.ks.us.

Write us

The Colby Free Press encourages Letters to the Editor on any topic of general interest. Letters should be brief, clear and to the point. They must be signed and carry the address and phone number of the author.

Mallard Fillmore

• Bruce Tinsley



BUSINESS DIRECTORY

TO HAVE YOUR AD PLACED IN THE BUSINESS DIRECTORY CALL KATHRYN OR SHARON TODAY AT (785)462-3963

Mobile Home Lots for Rent

\$175 Month
(includes water, sewer & storage shed)

FREE Month with approved application

Friendly Acres Mobile Home Park

1150 S. Franklin, Colby
Call 785-462-6445

Dr. Tom Barlow
DENTIST

785-460-7538

Appointments Readily Available

505 H N. Franklin, Colby

CB HEATING A/C & PLUMBING
1730 West 4th Street • Colby, Kansas 67701

Chad Briney - Owner

Office: 785-462-2445 • Cell Phone: 785-462-5633
Fax: 785-462-6341 • Website: www.cbheatac.com
Email: Chad@cbheatac.com

Licensed ~ Bonded ~ Insured Tappan • Rheem • Trane

LASERS BY TALIA
LOOK BETTER, FEEL BETTER

- Laser Hair Removal
- Ultrasonic Slimming
- Teeth Whitening

MON. & WED. NOON - 6 P.M.
TUES., THURS. & FRI.
8 A.M. - 5 P.M.

APPOINTMENTS ALSO AVAILABLE AFTER HOURS

1580 ROSE AVE. • BURLINGTON, CO
719-346-4640



€clipse Salon
204 W. 4th Street, Selden, KS

Men, Women & Children Cuts/Styles, Color/Highlights, Perms, Manicures, Waxing & Professional Products

For Appointment Call: 785-386-4108
TUES. - FRI. 9 a.m. - 6 p.m.
SAT. 9 a.m. - 1 p.m.
Evenings By Appointment • Walk-Ins Welcome



Elaine Koerperich
Owner/Stylist

ROOFMASTERS
Serving Colby for over 30 YEARS!

425 East Hill, Colby, KS
785-462-6642

RESIDENTIAL: Heritage Shingles, Wood Shingles, IR Shingles, Stone Coated Steel Metal Panels

COMMERCIAL: EPDM Rubber, White TPO Single Ply, Modified Systems, Built up Systems, Elastomeric Coating

FREE ESTIMATES

WHO YA GONNA CALL?

Langer Industrial Service
2022 County Road 11 • Levant, KS 67743 • 785-586-2208
Monday - Friday 8 a.m. - 5 p.m.

We pay cash up to for all scrap metal*

Brass • Copper • Aluminum • Batteries • Electric motors • Cars • Combines • Farm Equipment • Prepared/Unprepared Iron and Tin • Container Service • Off site baling and car crushing • Limited pickup service available

Schedule deliveries after normal business hours by appointment when necessary.
* Some Conditions Apply

Nancy LePell Bookkeeping
165 East 3rd - Colby, KS 67701
785-462-7428

Income Tax Preparation - Individual, Business and Estates
Accounting and Bookkeeping
Business and Financial consultation

Christy Griffith, RTRP Nancy LePell, EA, ChFC, CB
Working to bring you the best possible solutions

SCI
Stephens Construction, Inc.

Serving NW KS for 44 years


Local contractor with reliable and experienced customer service. Specializing in agricultural, commercial and residential construction.

Lester Wood Frame and Butler Steel Frame Buildings

1260 S. Country Club Drive
Ph: 785-462-7571 Toll Free: 1-866-462-7571

SHOW YOUR MONEY WHO'S BOSS.

Nationwide Financial



Shirley D Skolout
Mountain Plains Agency
1690 W. 4th St.
Colby KS 67701
Phone: (785)460-6284
skolos1@nationwide.com

Don't let your money just sit around.
Take charge. Take action.
Talk to your Nationwide® agent about our range of financial solutions.

NEW SYSTEM
PROFESSIONAL WINDOW CLEANING

(785) 462-6995
(800) 611-6735

www.MyWindowCleaner.net
Serving Colby since 1992!

Commercial • Residential • Free Estimates

NKBA
The Kitchen & Bath Professionals

- Kitchen Cabinets • Counter Tops
- Closets • Furniture • Commercial
- Entertainment Centers
- Custom Jewelry Closets



Mingo Custom Woods
1965 W. 4th St., Colby, KS • 800.320.2201
www.mingocustomwoods.com • 785.462.2200

Questions about health care reform?

We have the answers.

You have new health insurance options, but which one is right for you? We can help you understand your options and select the right plan for you and your family.



I'm ready to help. Give me a call today!

Vernon Hurd
Farm Bureau Agent
550 N. Franklin Ave.
Colby, KS 67701
785-269-9511
www.VernonHurd.com

KANSAS FARM BUREAU
The Voice of Agriculture

CoventryOne.
Products available at Farm Bureau Financial Services

CHKS1765 Health Insurance plans underwritten by Coventry Health and Life Insurance Company, H240B-ML-1 (8-13)

Meadow Lake Restaurant & Lounge

- Open to the Public •

Monday Nights \$1 Draws

Saturday Nights Prime Rib



MEADOW LAKE
GOLF COURSE & RESTAURANT
785-460-6443
1085 E Golf Club Rd. • Colby, KS

HSI

HOXIE STATE INSURANCE, INC.
824 Main, PO Box 378
Hoxie, KS 67740

115 S. State St.
Winona, KS 67764
(785) 675.3263 - Fax (785) 675.3721

One combined policy + One deductible for it all

One big sigh of relief



When things go wrong, you need your insurance to go right. Contact me to see how our **one deductible advantage** can help provide you peace of mind when you need it most.



David Browne III
550 N Franklin Ave
Colby, KS 67701
785-462-3388

FARM BUREAU FINANCIAL SERVICES
Insurance • Investments

Auto • Home • Life • Business • College • Retirement

C.W. Beamgard Co. Inc.



SALES & SERVICES SINCE 1919

- New Vehicle Sales
- Service
- Used Vehicle Sales
- Windshield Pit Repair
- Parts
- Tires
- Accessories
- Towing Service

Monday - Friday 8-6, Saturday 8-Noon

785.626.3286
Fax 785.626.3717
210 State St. • Atwood, KS 67730

JM TREE & LAWN SERVICE

COMPLETE LAWN CARE

- Mowing
- Edging
- Trimming
- Verticut
- Tree Trimming & Removal



Lawn & Tree Spraying & Fertilizing

Sprinkler System Repairs & Installation

Call today to get your FREE estimate

Fully Insured, Bonded, Licensed and Covered by workman's Comp.

CERTIFIED WITH KANSAS DEPT. OF AGRICULTURE

Office: 785-462-6908
Office Manager: 785-443-5708
Owner: 785-443-1339

CHECK OUT OUR WEBSITE FOR MORE INFORMATION:
WWW.MURRAYENTERPRISES.ORG

KANSAS Insurance INC
Formerly THOMAS County INSURANCE AGENCY



490 N. Franklin 785-462-3939

- Home & Auto
- Farm & Crop
- Business Insurance
- Boat, Motorcycle, RV

Nationwide Agribusiness
On Your Side®

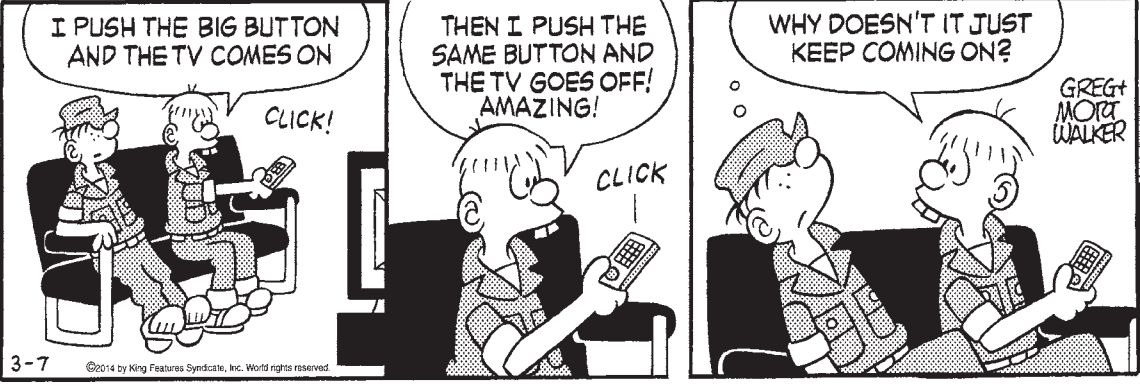
Dennis Tubbs
dtubbs@kansasins.com

www.kansasins.com

Baby Blues • Rick Kirkman & Jerry Scott



Beetle Bailey • Mort Walker



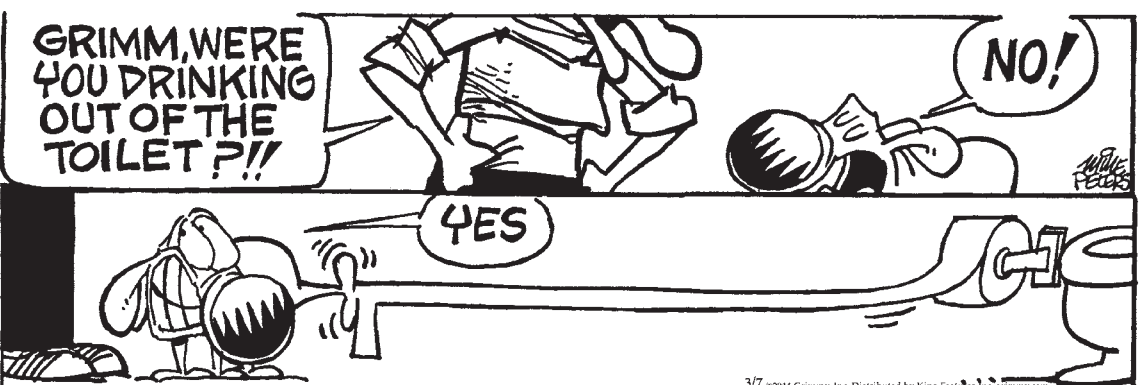
Blondie • Chic Young



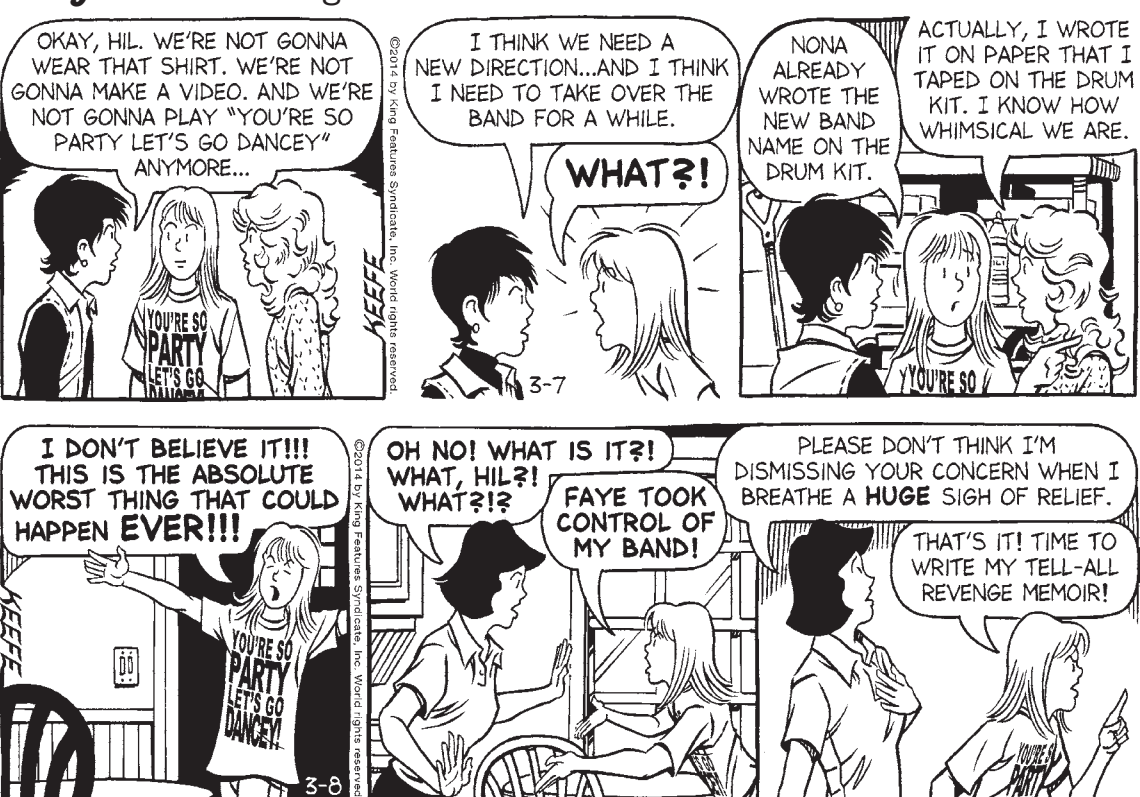
Hagar the Horrible • Chris Browne



Mother Goose and Grimm • Mike Peters



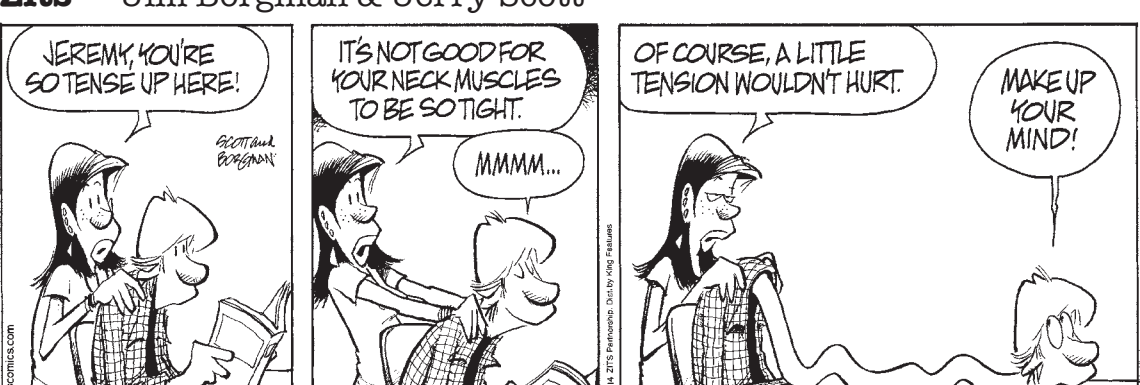
Sally Forth • Greg Howard



Todd the Dinosaur • Patrick Roberts



Zits • Jim Borgman & Jerry Scott



Heloise

- Hints from Heloise

Misdelivered, mail has rules

Dear Heloise: Please advise your readers of the proper way to handle mail that has been misdelivered. Return it to the post office (or box) for proper delivery. Under no circumstances is misdelivered mail to be opened. In the past, I have had private, sensitive financial statements opened, retaped and marked "opened by mistake."

You are right that under no circumstances should mail be opened if it is not addressed to you. According to the U.S. Postal Service, there are two ways to handle misdelivered mail:

- Delivered to wrong address: Place the item back in the mailbox for your mail carrier to pick up and deliver correctly. Do not mark on the item.
- Delivered to right address but wrong person (the person no longer lives at that address): Write "Not at this address" on the item and place in the mailbox, or take to a post office.

Never write or mark over the address or any information on the item. Hope this helps clear up any confusion. Accidents do happen, and the Postal Service moves millions and millions of pieces of mail daily!

P.S.: To help get your letter to the correct location, try to print the address if you have hard-to-read writing. Don't forget the ZIP code, either!

TRAVEL HINT

Dear Heloise: Here are some travel hints of value on road trips:

- Keep loose change and single dollar bills handy to pay for toll roads. You get through faster with exact change.
- Keep a pad and pen in the glove compartment so you can keep a record of gas expenses, mileage or overnight stays.
- If you stay in a motel, check sliding doors to make sure they are locked.

FACIAL SCRUB

Dear Readers: Want a quick-and-easy homemade facial scrub? To make the scrub, just mix 3 parts baking soda with 1 part water. Use your usual cleanser to clean your face, then apply the baking-soda mixture and gently scrub your face for a healthy glow. Rinse, pat dry and apply face cream. Baking soda is a versatile household product in any room in the house. Want to know what else you can do with it? Order my pamphlet Heloise's Baking Soda Hints and Recipes. Send \$5 and a long, self-addressed, stamped (70 cents) envelope to: Heloise/Baking Soda, P.O. Box 795001, San Antonio, TX 78279-5001. To quickly clean your fingernails, sprinkle baking soda on a nailbrush and scrub away the dirt, then rub in some hand cream or olive oil.

SLIM BOARD

Dear Heloise: I keep a slim white cutting board in the car for doing crossword puzzles when I'm the passenger. It's also handy for those drive-thru fast-food stops. The board fits nicely between the passenger seat and the console.

Bridge • Steve Becker

Your right-hand opponent opens with One Diamond, both sides vulnerable. What action (if any) would you take with each of the following five hands?

1. ♠ AQJ85 ♥ AK92 ♦ 74 ♣ K3
2. ♠ AJ ♥ QJ74 ♦ KJ6 ♣ KQ85
3. ♠ AQJ93 ♥ 85 ♦ K63 ♣ K92
4. ♠ AK ♥ A6 ♦ 8752 ♣ Q9632
5. ♠ KJ96 ♥ AQ87 ♦ 10 ♣ J984

Bidding Quiz

1. Double. The fact that the opponent opens the bidding does not foreclose the possibility that your side might have a partscore, a game or, on a rare occasion, even a slam. There are several ways of competing against an opening bid, and one of them is a takeout double.

Most commonly, the double announces opening-bid values and support for the unbid suits, but it can also show a more powerful one- or two-suited hand that is too good for a mere overall.

This is a hand of that type. Your double asks partner to reply in his best suit. If he happens to respond with two clubs, your plan is to bid two spades to identify your extra values.

2. One notrump. This is essentially the same as an opening notrump bid: 15 to 17 or possibly 18 points, balanced distribution and stoppers in at least three suits. The only additional requirement is that you must have at least one stopper in the opponent's suit, and this hand meets that condition.

3. One spade. This hand qualifies as an opening bid, but here you should overcall rather than double, since you are interested in only one suit and do not have sufficient extra values to double and then bid your suit. Partner will assume you have at least five good spades and about nine to 16 points.

4. Pass. You have the values for an opening bid, but it is too dangerous to express them. To double would be unwise, since you lack adequate support for either major, and it would be equally unwise to bid two clubs on such a mangy suit. Such an overall could easily result in a loss of 800 or 1,100 points.

5. Double. The only question is whether to pass or double, and our preference would be to double, even though you have only 11 high-card points. In the long run, you will come out ahead by competing with such hands, not because you expect to make a game, but to fight for a partscore and possibly prevent the opponents from making theirs by pushing them beyond their limit.

Family Circus • Bil Keane



"Mommy, are we keepin' you from having a hobby?"

Conceptis Sudoku • Dave Green

Difficulty Level ★★ ★★

| | | | | | | | | | |
|---|---|---|---|---|---|---|---|---|---|
| | | | | | 7 | | | | |
| 7 | | | 1 | | | | 4 | | 8 |
| | | | 4 | 5 | | | 3 | | |
| 1 | 4 | | | | | 6 | | | |
| | 9 | | | | | 5 | | | |
| | 4 | | | | 3 | | | 1 | |
| 2 | | 6 | 1 | | | | | | |
| 5 | 3 | | | | 9 | | | | 4 |
| 6 | | | | | | | | | |

Difficulty Level ★★ ★★

This is a logic-based number placement puzzle. The goal is to enter a number, 1-9, in each cell in which each row, column and 3x3 region must contain only one instance of each numeral. The solution to the last Sudoku puzzle is at right.

Difficulty Level ★★ ★★

| | | | | | | | | |
|---|---|---|---|---|---|---|---|---|
| 8 | 5 | 3 | 2 | 6 | 9 | 7 | 4 | 1 |
| 6 | 7 | 9 | 4 | 5 | 1 | 8 | 2 | 3 |
| 4 | 1 | 2 | 3 | 8 | 7 | 6 | 5 | 9 |
| 1 | 8 | 4 | 7 | 3 | 2 | 9 | 6 | 5 |
| 7 | 9 | 6 | 5 | 4 | 8 | 1 | 3 | 2 |
| 3 | 2 | 5 | 1 | 9 | 6 | 4 | 7 | 8 |
| 5 | 6 | 7 | 8 | 1 | 3 | 2 | 9 | 4 |
| 9 | 4 | 1 | 6 | 2 | 5 | 3 | 8 | 7 |
| 2 | 3 | 8 | 9 | 7 | 4 | 5 | 1 | 6 |

Difficulty Level ★★ ★★

Cryptoquip

DVLRS P DAAPCRILDKKN DLR
KJLU JV VJJC AJKJSPIZ
PL VRKL DU LQJFZQ P
CNRC D KPLLKR PIUPCR

Yesterday's Cryptoquip: WHEN THAT GUY WITH A SPRAINED ANKLE DEPARTS TO START HIS DAILY WALK, HE MAY GO OUT ON A LIMP.

Today's Cryptoquip Clue: P equals I

Crossword • Eugene Sheffer

- ACROSS**
- 1 Astronaut stake
 - 4 Central points
 - 8 Probability fixture
 - 12 Blond shade
 - 13 Out of control
 - 14 "Arrivederci"
 - 15 "The Price Is Right" highlight
 - 17 -shanter
 - 18 It's just a question of time
 - 19 Donut shop purchase
 - 20 West Point newbie
 - 22 Lash
 - 24 Oodles
 - 25 The Curies, e.g.
 - 29 Line
 - 30 African nation
 - 31 With it
 - 32 Drillers and fillers
 - 34 Beauty spot
- DOWN**
- 3 "High Noon" confrontation
 - 4 Side sultanate
 - 5 Mideast function
 - 6 Trig
 - 7 Eisenhower
 - 8 Well-armed predators?
 - 9 "In Her Shoes" actress
 - 10 Knighted woman
 - 11 Any moment now
 - 16 Sharpen
 - 19 Symbol of thinness
- Solution time: 25 mins.**

Yesterday's answer 3-7

| | | | | | | | | | | |
|---|---|---|---|---|---|---|---|---|---|---|
| A | D | E | S | P | A | W | B | E | L | A |
| H | E | M | P | R | A | H | E | P | I | C |
| A | S | I | A | O | U | I | G | I | V | E |
| S | I | T | C | O | M | S | U | I | T | |
| K | N | O | C | K | K | N | O | C | K | |
| P | E | A | L | E | H | E | E | M | A | N |
| E | L | S | E | J | A | Y | M | E | R | E |
| C | A | P | S | U | I | P | A | S | T | E |
| K | N | I | C | K | K | N | A | C | K | |
| R | A | Y | E | U | S | E | D | T | O | |
| P | R | I | G | B | A | G | S | E | E | D |
| R | U | N | E | O | R | U | D | A | N | E |
| E | G | G | S | X | E | R | O | L | D | S |

| | | | | | | | | | | | | |
|----|----|----|----|---|---|----|----|----|----|----|----|----|
| 1 | 2 | 3 | 4 | 5 | 6 | 7 | 8 | 9 | 10 | 11 | | |
| 12 | | | 13 | | | | | 14 | | | | |
| 15 | | | 16 | | | | | 17 | | | | |
| | | 18 | | | | | 19 | | | | | |
| 20 | 21 | | | | | 22 | 23 | | | | | |
| 24 | | | | | | | | | 26 | 27 | 28 | |
| 29 | | | | | | 30 | | | | | 31 | |
| 32 | | | | | | 33 | | | | | 34 | |
| | | | | | | 35 | | | | | 36 | |
| 37 | 38 | 39 | | | | | | | | | | |
| 41 | | | | | | | | | | | 44 | 45 |
| 46 | | | | | | 47 | | | | | | 48 |
| 49 | | | | | | 50 | | | | | | 51 |

To place your classified ad, mail (155 W. Fifth), fax (785-462-7749), phone (785-462-3963), or stop by our office at 155 W. Fifth

Notices

The next 10 week course of Divorce Recovery for women will begin March 17, 2014 and go through May 19, 2014. Classes are held each Monday evening 6:30 - 8 p.m. At the Colby United Methodist Church Email lynetteball@yahoo.com for information. 785-675-8606 ---2/21---3/13---

Dan is back! Dan Geschwentner. Small remodeling and repair jobs. Call 785-443-3673. ---12/15---TFN---

Classified ad deadlines (word ads only). Noon the day before publication (noon Friday for Monday paper). Ads going into the Country Advocate need to be in on Thursdays. Please check your ad the First time it runs. If you find an error, please call at (785) 462-3963 so it can be corrected, since we will not be responsible for errors after that first day. The Colby Free Press. ---3/1---TFN---

Help Wanted

We're accepting applications for Housekeepers. Salary to be determined based upon qualifications. Apply in person and pick up applications at the Sleep Inn & Suites, 2075 Sewell Ave., Colby, KS. ---3/7---3/20---

Carrier wanted for morning delivery of the Salina Journal in Colby - early morning hours. For more information call 1-800-827-6363 Ext. 300. ---2/27---3/12---

Help Wanted

Registered Nurses Needed - One full time and one part time position available; night shift; twelve hour shifts. Successful applicants will possess a positive attitude, strong communication skills, and basic computer knowledge. Holiday and weekend rotation required. Cheyenne County Hospital offers competitive wages, paid CEUs, support for educational growth, and a comprehensive benefit package. Call or go online to learn more! www.cheyennecountyhospital.com 785-332-2104 ext. 116 - Human Resources, Cheyenne County Hospital, 210 W. First, St. Francis, KS 67756. ---3/6---3/12---

OTR Livestock Hauler needed. Must have valid CDL and good driving record. Pre-employment drug screening required. Only serious applicants need apply. Call (785) 626-5293. ---3/5---3/31---

Looking for a way to increase your income working a few hours a week from home. Ask me about the Nerium opportunity and I can help you get started. Call 785-443-1458 or visit www.mitch2014.nerium.com. ---3/5---3/10---

Great part time job with full time health, dental, and life insurance benefits, excellent college funding - call SGT Joe Leroux in Colby at 316-213-3806 Kansas Army National Guard. ---2/24---3/21---

Help Wanted

Elevator Worker - Archer Daniels Midland Company (ADM), a world leader in agricultural processing, is currently seeking candidates for positions as elevator workers at our Oakley, KS location. Elevator workers will unload grain, perform clean-up work, perform some maintenance, and assist in other areas of grain handling. Flexibility to work overtime and weekends is required. Successful completion of a pre-employment drug screen, physical and background check is required. Please apply online at www.adm.com/jobs. ADM is an Equal Opportunity/Affirmative Action Employer. ---3/3---3/14---

CDL Driver Needed - Oakley based hopper bottom trucking company hauling DDGs grain and more. Monday through Friday, paid weekly. Call 785-953-7012. ---2/21---3/13---

Advantage Woodwork is a custom woodworking shop in the Colby area that specializes in European Wood & Aluminum Window & Door systems. We are looking for a full time production assistant. This person must be dependable, hard worker, and a quick learner. Pay is based on experience. Please email resumes and questions to advantagewoodwork@gmail.com. ---2/13---3/7---

Help Wanted

The Team at Kansasland Tire of Norton has an immediate opening for a service truck operator/general service person. Must have a valid drivers license. Competitive wages, 401k, insurance, & uniforms. Experience preferred, but not necessary we will train. Please stop by at 11101 Rd E1, Norton and pick up an application or call 785-877-5181 EOE. ---2/12---TFN---

Great Western Tire of Colby, Inc., 1170 S. Country Club Drive, is now accepting applications for all shop positions. Positions included, but not limited to, lube oil & tire, truck tire, service call, and alignment technicians. Experience required, but will train the right person. Valid driver's license is a requirement. Full time position includes competitive salary and benefits. Apply in person, EOE. Questions please call 785.462.2100. ---1/8---TFN---

PSI Transport, LLC, is always looking for good company livestock and grain haulers as well as shop mechanics. Competitive pay life/health/dental benefit and bonus program available. EOE (785) 675-3477 ---7/13---TFN---

Help Wanted

City of Winona needing full time help with city maintenance work. Send application to City of Winona P.O. Box 262 Winona KS 67764. For any questions phone 785-846-7442. ---2/17---3/14---

Carriers needed to deliver the Colby Free Press! Great for someone needing extra income. A few hours a day, 4 days a week. Bonus after 3 months. To apply please stop by the office at 155 W. Fifth St., Colby or for questions call 785-462-3963. ---3/21---TFN---

Lost & Found

Lost - Female Brown Standard Poodle, white on chest. Last seen 4 miles east of Oasis Travel Center. Anyone with information please call Colby Animal Clinic 785-460-8621. ---3/5---3/10---

Office Space for Rent

Downtown office space for rent, corner location, utilities included with rent. Call Thomas County Insurance 785-462-3939. ---10/3---TFN---

Storage for Rent

Storage Units For Rent - Different sizes available. Call 785-443-8658. ---3/6---4/17---

Mobile Home for Rent

Nice 2 bedroom, 1 bath, storage shed, available now 785-462-1041. ---3/6---3/12---

Houses for Sale

For sale or trade. 3 bedroom home in Brewster, 106 Nebraska. \$39,000 OBO. Contact Kenny at 719-740-1072. ---1/30---3/19---

The City of COLBY HELP WANTED

The City of Colby and the Recreation Department are hiring American Red Cross certified lifeguards, swim instructors and concessions/admissions workers for the 2014 summer season. All guards must be at least 15 years of age and certified in Lifeguard, First Aid and CPR training. Guard salary will be \$8-\$11, based on experience. Concessions/admissions employees must be at least 16 years of age, and salary will be \$7.50-\$7.85/hour. Colby Community College is offering recertification classes in March and certification classes in May. Contact the Admissions offices at 460.4690 for class information. Employees are eligible for certification reimbursement. New employees must fill out an application which can be obtained at City Hall or the Colby Rec Department. Returning personnel may request that their previous application be considered. All applications and request for consideration must be turned into the Rec office at 285 E 5th Street or contacted at 460.4440 by Friday, March 14. Application review will begin March 18th, 2014. Please contact Dane Olofson at the Rec Department (460.4440) for more information. EOE

Help Wanted

Bookkeeper Position Available at Brewster, KS

This is a full-time position with competitive wages and a full benefits package.

Please send resume to:

CHS Inc. PO Box 39, Brewster, KS 67732

E-mail: travis.goodheart@chsinc.com or

Apply in person at CHS-Brewster

181 Hwy 24, Brewster, Kansas

EOE

Public Notice

RESOLUTION NO. 1073

A RESOLUTION OF THE GOVERNING BODY OF THE CITY OF COLBY, KANSAS REGARDING THE ESTABLISHMENT OF A RURAL HOUSING INCENTIVE DISTRICT WITHIN THE CITY

WHEREAS, K.S.A. 12-5241 et seq. (the "Act") authorizes any city incorporated in accordance with the laws of the State of Kansas (the "State") with a population of less than 60,000 located in a county with a population of less than 80,000, to designate rural housing incentive districts within such city; and

WHEREAS, prior to such designation the governing body of such city shall conduct a housing needs analysis to determine what, if any, housing needs exist within its community; and

WHEREAS, after conducting such analysis, the governing body of such city may adopt a resolution making certain findings regarding the establishment of a rural housing incentive district and providing the legal description of the property to be contained therein; and

WHEREAS, after publishing such resolution, the governing body of such city shall send a copy thereof to the Secretary of Commerce of the State of Kansas (the "Secretary") requesting that the Secretary agree with the finding contained in such resolution; and

WHEREAS, if the Secretary agrees with such findings, such city may proceed with the establishment of a rural housing incentive district within such city and adopt a plan for the development or redevelopment of housing and public facilities in the proposed district; and

WHEREAS, the City of Colby, Kansas ("the City") has an estimated population of approximately 5,438, is located in Thomas County, Kansas, which has an estimated population of 7,977 and therefore constitutes a city as said term is defined in the Act; and

WHEREAS, the City has conducted a Housing Needs Analysis dated November 16, 2012 (the "Analysis") to determine what, if any, housing needs exist within its community, a copy of which is on file in the office of the City Clerk.

NOW, THEREFORE, BE IT RESOLVED by the Governing Body of the City of Colby, Kansas as follows:

Section 1. Findings and Determinations. After review of the Analysis, the governing body of the City hereby finds and determines as follows:

a. There is a shortage of quality housing of various price ranges in the City despite the best efforts of public and private housing developers;

b. The shortage of quality housing can be expected to persist and additional financial incentives are necessary in order to encourage the private sector to construct or renovate housing with the City;

c. The shortage of quality housing is a substantial deterrent to the future economic growth and development of the City; and

d. The future economic well-being of the City depends on the Governing Body providing additional incentives for the construction or renovation of quality housing in the City.

Section 2. Proposed Rural Housing Incentive District. Based on the foregoing findings and determinations, the governing body of the City hereby declares its intent to establish a Rural Housing Incentive District (the "District") within the City. The legal description of the proposed District is attached hereto as Exhibit A. A map of the proposed District is attached hereto as Exhibit B.

Section 3. Publication. This Resolution, including Exhibits A and B hereto, shall be published once in the official newspaper of the City.

Section 4. Approval by Secretary of Commerce. Following the adoption

and publication of this Resolution, a certified copy of this Resolution, including Exhibits A and B, and the Analysis shall be submitted to the Secretary with a request that the Secretary review such documents and advise the governing body whether the Secretary agrees with the findings contained herein. If the Secretary advises the governing body in writing that the Secretary agrees with each of the findings of the governing body, the governing body may proceed to establish the District in accordance with the provisions of the Act.

ADOPTED by the Governing Body of the City of Colby, Kansas on March 4, 2014.

Gary L. Adrian, Mayor

ATTEST:

Joni L. Ketchum, City Clerk

(Seal)

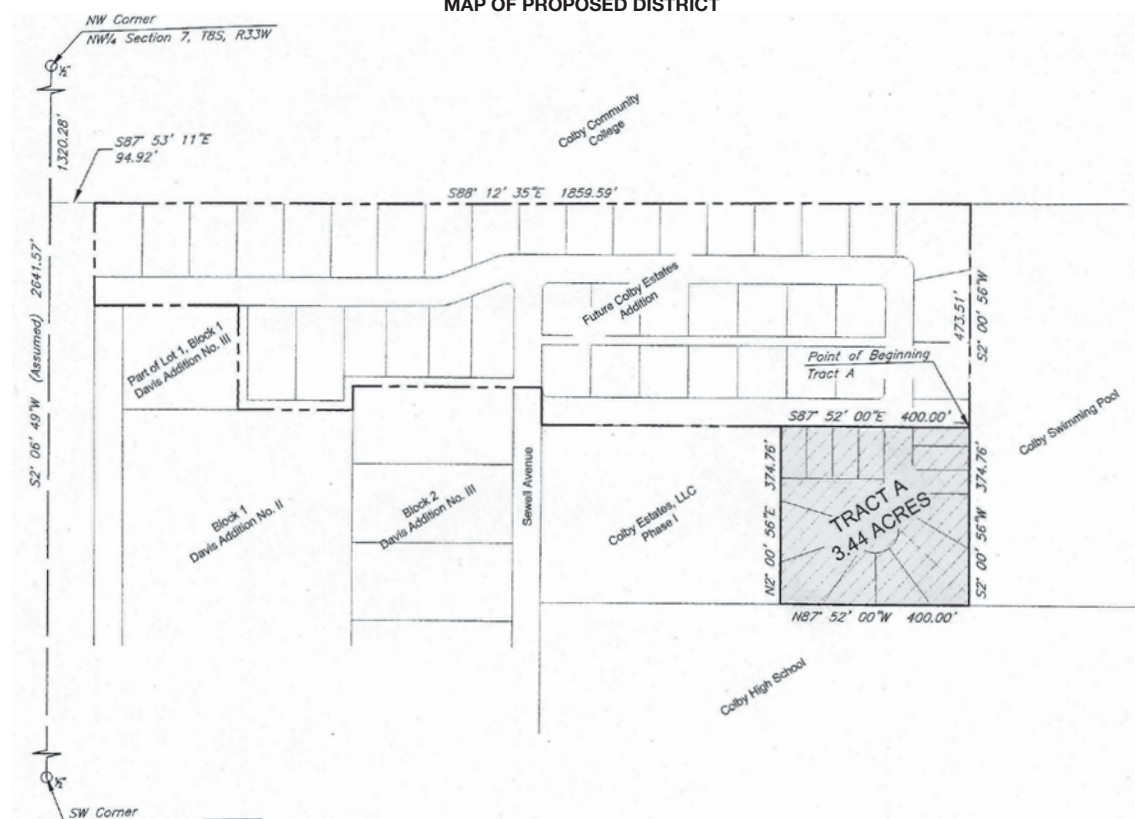
CERTIFICATE

I hereby certify that the above and foregoing is a true and correct copy of Resolution No. 1073 adopted by the governing body of the City of Colby, Kansas on March 4, 2014 as the same appears of record in my office.

DATED: March 4, 2014.

Joni L. Ketchum, City Clerk

EXHIBIT B MAP OF PROPOSED DISTRICT



Foul finish helps Cowgirls end Colby's season

By R.B. Headley
Colby Free Press
rbheadley@nwkansas.com

No comment.
Those two words said it all for coach Ryan Becker after his Colby High girls were called for more than 10 fouls after halftime Thursday night compared to home-team Goodland's five.

The phrase didn't even begin to cover how Becker felt about his Eagles' final fighting effort in this 4A substate tournament game.

"One thing I could count on all year is these players never quitting," Becker said after his Eagles and forced overtime before falling to their fiercest rivals, 40-31, at Goodland's Max Jones Field House.

"We couldn't get foul shots, and they had a huge advantage at the free-throw line," he added. "Give credit to Goodland."

The No. 2-seed Cowgirls (13-8 record) made some great plays while scoring seven consecutive points to start overtime.

No. 3-seed Colby could never quite recover, suffering another setback when senior season-long leader Haileigh Shull fouled out.

Eagle pressure was oh-so-close to forcing a Goodland turnover along the sideline, but Shull was whistled that fifth and final foul of her high school career instead.

Tallest Cowgirl Kate-Lynn King followed with a great catch under the basket and clinching three-point play as Colby did not score again.

Goodland advances into Saturday night's substate championship



R.B. HEADLEY/Colby Free Press
Colby High senior Haileigh Shull scooped a shot around Goodland forward Kate-Lynn King Thursday night.

game against No. 1-seed Hugoton (18-3 record), who trounced Scott City 57-33 in Thursday's other semifinal.

The Eagles (9-12 final record) must move on without Shull and senior classmate Abby Friesen.

"Let me say they've been two of the best captains I've had on a team in quite awhile," Becker said. "They will be impossible to replace. But tomorrow's a new day, and we'll keep moving forward."

Full speed ahead's never been a problem for these feisty Eagle girls, especially when it was to answer one of the Cowgirls' galloping runs.

When Goodland shot ahead 7-0,

Colby's offense finally awoke and worked to an 8-7 lead.

Shull's free throws maintained the one-point advantage into halftime, 11-10, and a pinpoint pass from sophomore Brenly Terrell actually gave Colby some "breathing" room. Shull turned the assist into a 13-10 Eagles lead.

The Cowgirls caught Colby 15-15, setting up another patented Eagle spurt.

First, sophomore Brielle "The Bee" McKee rose up and stung her opponents again. She out-rebounded everyone on the floor and quickly swished a go-ahead jump shot before any Cowgirl could react.

Now it was backcourt partner Brooklyn Bange's turn to make all her fellow 5'4" people proud. Some of us are actually listed at 5'4 3/4", but that's not part of this story.

Bange's three-point beauty off the glass became a big story because it created Colby's biggest lead of 20-16. With only one quarter remaining, the Eagles appeared ready to score their second consecutive win over rival Goodland.

However, the Cowgirls were just as determined to stay in this state tournament chase. They regained a 26-23 lead even though Colby sophomore Brenly Terrell's corner "triple" felt like another momentum changer.

Junior Shaile Giebler soon realized that sometimes one must rip momentum away from the other team. Her diving save (pictured to the right above) was one more huge Eagle play.

Giebler somehow flipped a pass back to sophomore Lara Stephens, whose score brought Colby within two.

An ensuing Goodland free throw only inspired Giebler to step and hit a game-tying trifecta.

Now 28-28, Colby regained the basketball with still 24.6 seconds remaining. They calmly dribbled



R.B. HEADLEY/Colby Free Press
A Goodland Cowgirl (in white) had no chance of outfighting Colby High junior Shaile Giebler (23) for this loose basketball late in Thursday's 4A sub-state tournament basketball game at Goodland's Max Jones Field House. Giebler actually flipped the ball back to teammate Lara Stephens, left, who scored and brought Colby within two points. Eagle Brenly Terrell (2) is also pictured.

down the clock, looking for a driving opportunity or kick-out pass to an open shooter.

Goodland stopped Giebler's drive, though, and regulation time ran out without another shot.

"We lost track of it," Becker said about the Eagles' execution of this final play.

Goodland then turned the extra chance into seven crucial points to put this great game away.



R.B. HEADLEY/Colby Free Press
Sophomore Coleton Rogge pulled down this rebound during a recent Triplains-Brewster home game. His two late three-pointers helped the Titans rally past Logan in Thursday's 1A substate tournament.

Titans rally for 44-43 victory

By R.B. Headley
Colby Free Press
rbheadley@nwkansas.com

Trailing by seven points late, the Triplains-Brewster Titans finished on an 8-0 run to stun Logan, 44-43, in Thursday night's 1A substate tournament at Grainfield.

Senior Nathan Jorgensen couldn't have picked a more perfect time for his one basket.

The tough football running back plowed behind Logan's defense on a baseline drive destined for all-time great Titan history.

Jorgensen rumbled directly un-

der the basket and made his spinning, reverse layup.

Only three seconds remained — not enough time for Logan to answer before the final buzzer sounded.

The No. 1-seeded Titans (13-8 record) survived this potential season-ending scare. Instead, they advance into Saturday's 7:30 p.m. substate title game against No. 2 Northern Valley (11-9).

Triplains-Brewster edged the Huskies, 40-39, just one week ago at Almenda. Northern Valley knocked off Wheatland-Grinnell, 55-52, in Thursday's other semi-

final.
No. 5-seed Logan (9-13 final mark) played its third game with the Titans decided by five points or less this season.

The Trojans took a five-point lead of 18-13 with one hot-shooting first quarter. Logan maintained its lead deep into the fourth quarter despite Titan senior Seth Smith, junior Layton Werth and sophomore Coleton Rogge scoring 10 points apiece.

Rogge's pair of late three-pointers sparked the Titans' final comeback from a 43-36 deficit. Taylor Stramel added eight points.

Schedule

Today
College indoor track/field: Colby Community College at Indoor Nationals in Armory, N.Y.

Boys basketball: Colby vs. Scott City in 4A sub-state at Goodland, 7:30 p.m.

Girls basketball: Triplains-Brewster vs. Northern Valley, 6 p.m.; Golden Plains vs. Wheatland Grinnell, 7:30 p.m., in 1A sub-state at Grainfield.

Public Notice

NOTICE OF SUMMARY PUBLICATION

ORDINANCE NO. 1537 OF THE CITY OF COLBY, KANSAS ESTABLISHING A RURAL HOUSING INCENTIVE DISTRICT WITHIN THE CITY AND ADOPTING A PLAN FOR THE DEVELOPMENT OF HOUSING AND PUBLIC FACILITIES IN SUCH DISTRICT, AND MAKING CERTAIN FINDINGS IN CONJUNCTION THEREWITH (Davis Addition Residential Project).

Ordinance No. 1537 of the City of Colby was passed by the City Council on March 4, 2014. This ordinance establishes a Rural Housing Incentive District (RHID) within the City of Colby and adopts a Development Plan for housing and public facilities in the RHID.

The complete text of this Ordinance may be obtained or viewed free of charge at the office of the City Clerk and on the City's website www.cityofcolby.com

/s/ Joni L. Ketchum, City Clerk

John D. Gatz, City Attorney, does hereby certify that the above summary is legally accurate and sufficient. Dated this 4th day of March, 2014.

/s/ John D. Gatz, City Attorney

ARE YOU STILL PAYING FOR EBOOKS?
WOULD YOU LIKE THE ABILITY TO READ YOUR FAVORITE MAGAZINES ON
YOUR IPAD, TABLET OR EREADER?

**NorthWest Kansas Library System
and
Your Local Public Library**
Can provide the answer...



NorthWest Kansas Library System and Your Local Library invite you to use Sunflower eLibrary, powered by OverDrive, and Zinio Digital Magazines, by Recorded Books. Both Services are provided to every library patrons free of charge. To sign-up, go to your local library to receive a patron barcode number or library card. You will use the barcode number to register with Sunflower eLibrary and Zinio.

While at the library look for all these services provided by The State Library of Kansas.

STOP IN & SAVE!

CUSTOMER APPRECIATION DAYS SALE!

MARCH 13 & 14 8 a.m. to 6 p.m.
MARCH 15 8 a.m. to 5 p.m.

BUILDING RELATIONSHIPS

One Client at a Time!

Come in for a FREE GIFT with every building designed in DreamMaker!

Contact us today for a FREE consultation!

**990 S. Range, Avenue
Colby, KS 67701
785-462-2023**

FEATURING:

800-373-5550 | ClearyBuilding.com

WOOFER PUMP & WELL INC.

1024 Oak Ave.
Hoxie, KS 67740

Office Phone 785/ 675-3991 Fax: 785/ 675-3990
Shop Phone 785/ 675-3023 E-mail: woofprw@ruraltel.net

Irrigation, Domestic, Geothermal & Environmental Services

- Irrigation Pump Repair
- Irrigation Well Drilling
- Domestic Well Drilling & Repair
- Environmental Drilling
- Windmill Repair
- Solar Systems
- Geothermal Pump Systems

For all your irrigation needs call:
Lance Shepard (785) 675-8376

WHITE OUT SALE!

2011 Ford F-150 XLT
(pictured above)
White, Cloth,
33,814 miles

2010 Chevrolet Silverado 1500 LT
(pictured above)
White, Cloth,
49,998 miles

2011 GMC Sierra 2500HD SLE
(pictured below)
White, Cloth,
39,923 miles

2012 Chevrolet Silverado 1500
(pictured above)
White, Cloth, 40,450 miles

2012 Chevrolet Silverado 1500 LT
(pictured below)
White, Cloth,
12,358 miles

FINLEY MOTORS, INC.

1520 Highway 27, Goodland, KS 67735 • Toll free: (800) 525-3701 • "Your volume & variety dealer!"

WWW.FINLEYMOTORSINC.COM

Trojans take league opener, 2-1

By R.B. Headley
Colby Free Press
rbheadley@nwkansas.com

Every potential Garden City game-tying rally was stopped as Colby Community College's softball team delivered a terrific 2-1 Jayhawk League win Thursday afternoon.

The Trojans became early league leaders (1-0 Jayhawk record) behind sophomore Natalie Elmgreen's excellent all-around effort.

Not only did Elmgreen pitch a three-hit complete game, she scored one Colby run and drove home the other.

Trojan teammates helped those two runs hold up through some determined Broncbuster comeback attempts.

Garden City's best threat came when the first two batters reached base to start their fourth frame. A sacrifice bunt moved both runners into scoring position.

However, third baseman Kayla Canar stopped a sharp grounder and threw that next Broncbuster out before the lead runner could even think about running home.

Elmgreen took care of the rest, using nothing but "gas" to strike out Garden City's next hitter. It was only one of two Elmgreen strikeouts during this seven-inning contest.

Right fielder Breta Alstrom also



R.B. HEADLEY/Colby Free Press
Colby Community College coach Steve Kinnett, left, had a discussion with an umpire while sophomore pitcher Natalie Elmgreen patiently waited for Thursday's home game to resume with Garden City College. When play was happening, Elmgreen dominated as she pitched all seven innings and permitted just three hits during the 2-1 Trojans victory that began Jayhawk League West softball action. Elmgreen also batted in Colby's second and eventual decisive run to beat the visiting Broncbusters. The Trojans prevailed despite some tough plays like one pictured below, where catcher Kendra Trussel is tagged out trying to slide head-first into third base. Trussel had already delivered a key hit to help the Trojans move ahead 2-0.

made a great running catch to highlight the Trojans' good glove-work. They prevailed despite only five hits total.

Myra Riffel, Morgan Worthington, Kendra Trussel and Michelle Starkey all singled to go with Elmgreen's one hit. Worthington scored the other Colby run after stealing second base.

Unfortunately, eight errors doomed the Trojans to a 10-3 defeat in Thursday's second game.



Golden girls finish with tourney triumph

By Shania Finlay
Golden Plains High School

The Golden Plains Middle School girls A team traveled to Brewster to play their Western Liberty League tournament recently.

In their opening round they faced the Western Plains Bobcats in what coach Travis Smith said was "the most physical game he had ever coached."

The game started out with a free throw from eighth-grader Kaylie

Schaben and the Bulldogs went on to put in seven more points in the first quarter. They still came into the second quarter trailing the Bobcats by one point.

Seventh-grader KayCee Miller put seven more points in along with another from Schaben and one from Jennifer Esparza, leaving the halftime score 17-14 with the Lady Dogs in the lead.

In the third quarter, eighth-graders Maggi Nieman and Sierra Finlay each scored a basket and Miller also added two points

while blanking the Bobcats.

Eighth-grader Jennifer Esparza added a basket to the Bulldogs' score along with 13 more points for Golden Plains to five for the Bobcats. The final score was 38-19, which sent the Bulldogs to the semifinal round against Wheatland-Grinnell.

The girls held up a good defense in the second half, but the Thunderhawks prevailed 22-15. This sent the Bulldogs to play for third place against the Logan Trojans.

In the third quarter, Golden

Plains scored 11 points with nine of them from Miller.

The Trojans scored only three giving the Bulldogs a 30-13 lead. Schaben and Finlay each added two points to their score and seventh grader Noel Ritter scored a basket landing the girls third place with a 36-22 victory.

"We were determined to make the best of our last few games of the season," eighth-grader Sierra Finlay said. "I am very grateful that I had the opportunity to play with these girls."

Bulldog boys take one from Northern Valley

By Judy Rogers
Golden Plains High School

The Golden Plains Bulldogs stepped on the floor in Almena on Feb. 25 and hustled their way to another win over the Northern Valley Huskies, 56-38.

This was the first meeting between these two teams this season.

Zach Spresser opened the game with a three and the

Bulldogs were off and running.

"This was a good win for us as it helped us gain a better seeding for sub-state," senior Tristan Schwarz added as he tallied a game-high 24 points for the Bulldogs.

Sophomore Kade Wessel added 12 for the Bulldogs along with 10 from Ryburn. Also contributing to the win were Koi Wessel five, Zach Spresser three and Grant Spresser two.

RICK NEMETH

200 18 Mo. Old Registered Angus Bulls for Sale on Farm

85% of Bulls Are AI Sired

60 Bulls are ET Calves

nemethangus.com

Ludell, KS • (785) 626-4309 or (785) 322-5505

LOCATION: 13 miles northeast of Atwood, KS

Sale bulls are in top 3% of breed for both weaning and yearling weights. Free Delivery & Boarding

2.3 58 104 average EPD's on Nemeth sale bulls.
2.6 36 18 66 EPD's for current sires of the Angus breed.



EPD's BW WW MILK YW
4 62 38 118

SAV FREE SPIRIT

BOYD FOREVER LADY
SAV NET WORTH 4200 8003
SAF 598 BANDO 5175
GAR PRECISION 1019

SAV EMBLYNETTE 5463
SAF 598 BANDO 5175



EPD's BW WW MILK YW
.1 64 105 32

SAV GRAND PRIX

SITZ TRAVLER 8180
SAV FINAL ANSWER 0035
SAV EMULOUS 8145

BOYD NEW DAY 8005
SAV BLACKCAP MAY 7306
SAV BLACKCAP MAY 4136



EPD's BW WW MILK YW
.6 48 28 84

SAV MUSTANG

SITZ TRAVLER 8180
SAV FINAL ANSWER
SAV EMULOUS 8145
SAV NET WORTH 4200

SAV EMBLYNETTE 7415
SAV EMBLYNETTE 7260

SWITCH TO VIAERO & WE'LL

PAY YOU | UPTO | **\$600***

THE VIAERO ADVANTAGE

- Unlimited 4G Data
- No one has more 4G towers in Viaero's coverage!
- Great national 4G networks with our roaming partners T-Mobile and AT&T
- No contract necessary
- Android, iPhone or the rugged CAT phone - the best phones at the best prices.
- Local customer service and outstanding customer satisfaction!
- Industry leading phone protection plans included with purchase*
*on installment purchases



To Find a Viaero Location: Visit www.viaero.com or call 1.877.484.2376

*Customer must port their post-paid Verizon or US Cellular number to Viaero. Customer must provide their unlocked Verizon or US Cellular handset at the point of activation. Activation with Viaero on the Intro Data or Unlimited Everything rate plan is required. Purchasing a smart phone on an installment plan is required. Customer must fill out and mail in the Contract Buyout Form within 90 days of activation showing their Early Termination Fee charges in order to receive the ETF credit. Customer must fill out and mail in the Verizon Switch Handset Credit Form within 90 days of activation in order to receive the handset credit. Must maintain good standing with Viaero for minimum of 60 days and be active at time of credit processing to receive the ETF and Handset credit. Certain restrictions apply; see store for details.