

8 pages

COLBY FREE PRESS

75¢

Monday

January 6, 2014
Volume 125, Number 003
Serving Thomas County since 1888

Transfers end year for county

By Heather Alwin

Colby Free Press
colby.society@nwkanas.com

End-of-year money transfers and tax-roll corrections kept the Thomas County commissioners busy Tuesday.

Unspent money from the county's general fund will be set aside for construction of a new jail, though the commissioners have not yet reached agreement on whether the building should include administrative offices to replace the current courthouse.

Commissioner Paul Steele proposed a resolution transferring the general fund money because, he said, "it's money we don't have to borrow and don't have to pay interest on."

Steele has been pushing constructing a larger jail and administrative complex to house the county's administrative offices in addition to the jail and law enforcement functions.

The board passed resolutions transferring money in various department budgets into the capital outlay funds for those departments, allowing the unspent money to move into the 2014 fiscal year.

The commissioners also transferred unspent funds from East Hale and Rovohl Townships into the county's road and bridge budget since the county provides the road maintenance services for these townships.

The amount for each transfer was not specified in the commission's resolutions since the county's auditors must determine how much is left over in each fund.

The commissioners also approved corrections to the 2012 and 2013 tax rolls.

Personal property corrections included: \$88 abatement to Troy Sporer for a jet ski he sold; \$401 abatement to Tinley Glad for an all-terrain that should not have been taxed because it is used for farming; \$170 abatement to BKM Trucking for a truck that is assessed by the state; and a \$170 abatement to Ryan McLemore for a trailer that had been taxed based on an estimate.

Real estate corrections: \$21 abatement to James and Lori Deny for land that should not have been taxed after the area was replatted; \$3,019 abatement to Sunflower Bank and Parker McKee for taxes on a home that was completed after it was taxed; \$2,351 additional tax to Bankwest of Kansas and Charles and Tamara Plumisto for land that was incorrectly deeded; \$14 additional tax to Randy and Tamy Huff for land that was incorrectly deeded; \$2,365 abatement to Lawrence and Berneda Zoberst for the Plumisto and Huff properties; and \$2,009 additional tax to Farmers State Bank of Oakley and Carl and Janet Miller for a new house that was not added on

See "COUNTY," Page 2

Arctic air sweeps through

A winter storm delayed schools and caused several wrecks across area roads over the weekend.

Amanda Wertz, a meteorologist for the Goodland station of the National Weather Service, said that the storm was caused by arctic air from Canada and a low pressure trough that extended from there to Texas.

The temperatures in Colby was 19 at noon today, and extremely low temperatures have been reported across the midwest this afternoon. This includes single digit temperatures in Kansas City and Omaha. below zero temperatures in Minneapolis, St. Louis and Ames, Iowa. A low of six degrees

is expected tonight, and temperatures should drop well below zero with windchill.

The snow started falling early on Saturday morning. Wertz said that a snowfall of 2.1 inches was measured here in the 72 hours ending this morning, and of two inches in the last 48 hours.

Although little snow fell, the storm made for icy roads over the weekend, leading to several accidents on the freeway, mainly on Saturday. The Colby area was spared any serious crashes, but Sherman County was hit with several accidents that sent a half

See "ARCTIC," Page 2

Keep mandate, says government

By Jesse J. Holland

Associated Press

WASHINGTON – The Obama administration urged a Supreme Court justice Friday to stop blocking the new health care law's requirement that some religion-affiliated organizations provide health insurance that includes birth control.

The Justice Department called on Justice Sonia Sotomayor to dissolve her last-minute stay on the contraceptive coverage requirement of the Affordable Care Act, also known as Obamacare. Sotomayor issued the stay on New Year's Eve, only hours before the law's coverage went into effect. Under the health care law, most

health insurance plans have to cover all FDA-approved contraceptives as preventive care for women, free of cost to the patient. Churches and other houses of worship are exempt from the birth control requirement, but affiliated institutions that serve the general public are not. That includes charitable organizations, universities and hospitals.

In response to an outcry, the government came up with a compromise that requires insurers or health plan administrators to provide birth control coverage but allows the religious group to distance itself from that action. The exemption is triggered when the

See "MANDATE," Page 2



Work's going up in Colby



SAM DIETER
Colby Free Press

Many were putting in long hours last week to get projects done before the cold weather hit. Dustin Vrbas checked to see if a new power pole north of Colby was straight Tuesday afternoon (above). Midwest Energy crews were putting in new poles along Veterans Memorial Drive. Lyle Knebel (left, at right) and Joseph Roopchan worked on a new roof the same day at the First Christian Church at Third and School. Knebel, pastor of the church, said he was volunteering the services of his own construction company to finish the roof, (below).



Representative decries mandate

Supreme Court Justice Sonia Sotomayor issued a decision Tuesday night temporarily suspending a rule from the U.S. Department of Health and Human Services forcing religious organizations to provide for abortion drugs, sterilization and contraception in their health-insurance plans.

"These HHS mandates are a threat to the religious liberties of all Americans, especially

groups like the Little Sisters of the Poor and thousands of other religious and faith-based groups and churches," said U.S. Rep. Tim Huelskamp. "This battle to defend religious liberty and the rights of conscience is one of many to come in the battle to protect our constitutional rights."

This decision comes shortly after the District of Columbia U.S. Circuit Court of Ap-

peals issued a similar injunction against the department on behalf of the Catholic Archdiocese of Washington.

Huelskamp praised these decisions as moving in the right direction.



8 10499 02034 8

Weather



National Weather Service
Tonight: Mostly clear, with a low around 7. Southwest wind 5 to 10 mph.
Tuesday: Mostly sunny, with a high near 47. West wind 5 to 10 mph becoming northwest in the afternoon.
Tuesday Night: Mostly cloudy, with a low around 19. Calm wind becoming northeast around 5 mph after midnight.
Wednesday: Partly sunny, with a high near 29. Northeast wind around 5 mph becoming calm.
Wednesday Night: Mostly cloudy, with a low around 16.
Thursday: Mostly sunny, with a high near 40.
Thursday Night: Partly cloudy, with a low around 22.
Friday: Mostly sunny, with a high near 44.
Friday Night: Mostly clear, with a low around 24.
Saturday: Sunny, with a high near 48.
Saturday Night: Mostly clear, with a low around 24.
Sunday: Mostly sunny, with a high near 46.

Friday: High, 63; Low 18
Saturday: High, 28; Low -2
Sunday: High, 17; Low -14
Precip: Friday 0.01 inches
Saturday 0.05 inches
Sunday None
Month: 0.06 inches
Year: 0.06 inches
Normal: 0.42 inches
(K-State Experiment Station)
Sunrise and Sunset
Tuesday 8:04 a.m. 5:37 p.m.
First quarter moon at 9:40 p.m.
Wednesday 8:04 a.m. 5:38 p.m.
Moon: waxing, 56 percent
(U.S. Naval Observatory)

Transfers end year at county meeting

From “COUNTY,” Page 1

the tax records.
Other corrections: \$63 abatement to Teresa Loughran for double-taxed mineral rights; \$357 abatement for Medford Farms Inc. for minerals that were inappropriately taxed; and \$357 additional tax for Cobank for those mineral rights.
In other business, the commissioners:
• Signed agreements with David Tole and the John N. Sears Trust No. 1 to dig sand and rock on their land. The county will pay 50 cents per cubic yard for sand and \$10 per ton for rock

on Tole’s property and 75 cents per cubic yard for sand from the trust’s property. The prices vary because of the amount of processing required, said road supervisor Clair Schrock.
• Held a five-minute closed session with Schrock to discuss issues with an employee.
• Approved a bid of \$2,143 to CB Heating and Air for a mini-split heating and air conditioning unit for the Thomas County Community Foundation’s office in the county office complex.
• Approved accounts payable of \$188,257 for the general fund, \$7,402 for the noxious weed department and \$22,724

for the road and bridge department.
• Approved monthly payroll expenses of \$275,292.
• Received sampling results from the county landfill’s monitoring wells. The samples showed the trichloroethylene contamination, caused by an outside source, is not traveling through the water table.
• Signed a memorandum of agreement allowing the Emergency Medical Services department to participate in a grant that pays for training. The amount varies depending on the number of students.
• Approved a bear license for

the Colonial Steakhouse on U.S. 83 north of Oakley.
• Appointed Rosalie Seemann to the county planning commission. Seemann indicated her interest at a previous meeting, and the county received no other volunteers.
• Transferred \$261 from the sheriff’s drug forfeiture fund to the general fund for body armor that was incorrectly charged to the general fund.
• Approved payment of \$7 for the county’s share of the state-wide litigation between counties and the state Department of Revenue regarding oil and gas trust fund payments.

Arctic air sweeps through Colby

From “ARCTIC,” Page 1

dozen people to the hospital and briefly shut down the highway. Interstate 70.
The Kansas Department of Transportation closed down interstate 70 between Burlington and Goodland from 6 to 7:30 p.m. because of several crashes.
At 2:28 p.m., a 1999 Jeep Cherokee coming here from Colorado hit a patch of ice on Interstate 70 just 8.7 miles past the state line and rolled into the median. The driver Jacob B. Gardner, 36 and Sarah S. Freeman, 22, both of Bloomington, Indiana, went to Goodland Regional Medical Center.
At 5:16 p.m. a 2002 Jeep, also headed west, hit an icy patch and rolled five miles west of Goodland and rolled. Then 15 minutes later, a 2006 Toyota carrying a family from California apparently hit the tow truck

sent to pick up the Jeep as it was parked in the median.
Godoy Aldaberto Mendoza, 61, the driver of the Toyota, Blanca Mendoza, 50 Maria Mendoza, 17 and Ashley Mendoza, 11, all of Burbank, Calif, went to Goodland Medical Center. The driver of the Jeep, Elyse N. Green, 18, of Columbus Ohio, also went to the hospital.
The Thomas County Sheriff’s office working one non-injury accident just west of the 53 exit of Interstate 70, at 3:30 p.m. Saturday, and another accident at Sunday evening in rural Thomas County.
The wind brought temperatures down this morning and closed several local schools for a couple hours.
Colby and Oakley public schools, Sacred Heart School and Heartland Christian School all started at 10 a.m., two hours late.

Brewster and Golden Plains Schools started at their normal time.
Northwest Kansas was under several watches and warnings related to windchill over the weekend, including a wind chill warning that was in effect until 11 a.m. this morning. A high of 21 degrees was predicted today, but with windchill, but temperature values could have been as low as 13 below with windchill. The weather service reported a temperature of zero here last night, and Wertz said temperatures of 25 below with windchill were reported here early in the morning.
For today, the weather service is predicting either sunny or partially cloudy skies, and temperatures for the week should range from lows in the teens to highs generally in the 40s.

‘Vision Team’ to look at water here

Landowners and others in the Northwest Kansas Groundwater Management District will get their chance to help shape the governor’s 50-year Vision for Kansas Water at two meetings this week in Colby and Goodland.
“I think that anyone would be welcome,” said Katherine Wilkins-Wells, district manager, “and I think that the more people that want to get involved, the better.”
The meetings are being held

to seek public comment for Gov. Sam Brownback’s Vision Team for the Future of Water in Kansas. The first will be from 3 to 5 p.m. Thursday at the Cultural Arts Center at Colby Community College, with the second from 10 a.m. to noon Friday at the Wolack Building, 1006 Centre Ave., in Goodland.
Wilkins-Wells said the meetings are open to people with a stake in both irrigation and domestic water use, which would be pretty much everyone who

lives in the area. She said there will be a presentation on the governor’s proposed 50-year plan, followed by a question-and-answer session.
The governor’s “Vision Team,” which consists of representatives from the state Water Office, Department of Agriculture and Water Authority, will be at the meetings to answer questions, along with a representative from the Kansas Geological Survey.
The vision team will be meet-

ing with people across the state into the spring. Feedback from these meetings will serve the basis of a draft of the “Vision for the Future of Water in Kansas,” the state water office’s plan to work with management districts, local government and other water users.
At the recent Governor’s Conference on Water, Brownback issued a call for a vision that ensures Kansas water priorities are set to meet the state’s current and future needs.
“The Vision Team needs northwest Kansas’ help, input, ideas and strategies for making sure water needs for the area are available to keep this region’s production and economic value strong,” said Secretary of Agriculture Jackie McClaskey. “The team wants northwest Kansas and Groundwater Management District No. 4 to be a part of the solution. We encourage everyone to attend the stakeholder input meetings.”
For more information about the governor’s plans and upcoming meetings, go to www.kwo.org.

Briefly

The deadline for Briefly is noon the day before. Items submitted in the morning will be set up for the following day, space available. The deadline for Monday’s paper is noon Friday.

Church offers class for women on divorce

A 10-week program of hope, healing and support for women experiencing divorce will be offered from 6:30 to 8 p.m. Monday evenings through March 10 at the Colby United Methodist Church. Women of all faiths are welcome. Call Lynette Ball at (785) 675-8606 to enroll or for information.

Red Cross to hold blood drive Tuesday

The American Red Cross will hold a blood drive from noon to 6 p.m. Tuesday and 6:45 a.m. to 1:30 p.m. Wednesday at the Colby Community Building. Walk-ins are welcome, or call (800) 733-2767 or go to redcrossblood.org to schedule an appointment.

Hospital offering classes on childbirth

Citizens Medical Center will offer a four-week series of childbirth education classes at 7 p.m. Thursdays beginning this week in the hospital conference room for expectant mothers due before April. The labor support partner who will be with the mother is encouraged to attend. The next series begins March 6. Register by contacting Jeanene Brown in the hospital’s Education Department at (785) 460-4850.

Big Brothers offer soup, rolls at games

Support Big Brothers Big Sisters at the Soups and Cinnamon Roll Supper from 4 to 8:30 p.m. Friday at the Community Building. The menu includes soup and rolls for \$6 during the high school basketball games. Call Doug Finley at 462-3308 for questions.

Knights free-throw contest to be Sunday

The Colby Knights of Columbus will hold its annual free throw contest Sunday at the Colby Elementary School gym. Doors will open at noon and the contest begins at 1 p.m. It is open to boys and girls age 10 to 14 as Jan. 1, and proof of age, such as a copy of a birth certificate, is required. Call Dewey Augustine, 443-1548, or Bob Luck, 462-0686, for questions. Winners advance to the district contest.

Wellness Challenge to kick off this week

Dr. Doug Gruenbacher, a Quinter physician, will speak at the kickoff for the Thomas County Wellness Challenge at 7 p.m. tonight in the multipurpose room at the Colby Community College Student For information, call the county Health Department at (785) 460-4596.

Keep mandate, says government

From “MANDATE,” Page 1

religious group signs a form for the insurer saying that it objects to the coverage.
The insurer can then go forward with the coverage.
A group of Denver nuns who run nursing homes for the poor, called the Little Sisters of the Poor Home for the Aged, say signing that form makes them complicit in providing contraceptive coverage, and therefore

violates their religious beliefs. They want Sotomayor to make the injunction permanent until the case can be hashed out in court, or for the Supreme Court to agree to take their case now.
Government officials “are simply blind to the religious exercise at issue: The Little Sisters and other applicants cannot execute the form because they cannot deputize a third party to sin on their behalf,” said their lawyer, Mark Rienzi, who is also se-

nior counsel for the Becket Fund for Religious Liberty.
But Solicitor General Donald Verrilli said in court papers that nothing in the law will make those nuns pay for birth control for their employees. The nuns’ insurance is provided through a church plan that is not required to provide contraceptive coverage and has said it will not, he said, making their complaint baseless.
“With the stroke of their own

pen, applicants can secure for themselves the relief they seek from this court – an exemption from the requirements of the contraceptive-coverage provision – and the employer-applicants’ employees (and their family members) will not receive contraceptive coverage through the plan’s third-party administrator either. The application should be denied,” Verrilli argued.
It is not known when Sotomayor will make a decision.

LOCAL

TV Listings

Sponsored by the

COLBY FREE PRESS

Tuesday Evening						January 7, 2014				
	7:00	7:30	8:00	8:30	9:00	9:30	10:00	10:30	11:00	11:30
KAKE/ABC	S.H.I.E.L.D.		Goldbergs	Trophy	Killer Women		Local	Jimmy Kimmel Live	Nightline	
KBSL/CBS	NCIS		Intelligence		Person of Interest		Local	Late Show Letterman	Ferguson	
KSNK/NBC	The Biggest Loser				Chicago Fire		Local	Tonight Show w/Leno		J. Fallon
KSAS/FOX	Dads	Brooklyn	New Girl	Mindy	Local					
Cable Channels										
A & E	Storage	Storage	Storage	Storage	Shipping	Shipping	Shipping	Shipping	Storage	Storage
AMC	Braveheart								Reign of Fire	
ANIM	Wild Russia		Africa		Africa		Wild Russia		Africa	
BRAVO	Housewives/Atl.		Shahs of Sunset		100 Days of Summer		Happens		Shahs of Sunset	
CMT	The Dukes of Hazzard		The Truman Show						Cops Rel.	Cops Rel.
CNN	Anderson Cooper 360		Piers Morgan Live		AC 360 Later		E. B. OutFront		Piers Morgan Live	
COMEDY	Kroll	Tosh.0	Tosh.0	Tosh.0	Tosh.0	Kroll	Daily	Colbert	At Midnig	Tosh.0
DISC	Moonshiners: Outlaw		Moonshiners		Moonshiners		Moonshiners		Moonshiners	
DISN	Jessie	Geek Charming				Good Luck	Austin	ANT Farm	Good Luck	Good Luck
E!	Nene Leakes		13 Going on 30				Chelsea	E! News	Chelsea	
ESPN	College Basketball		College Basketball				SportsCenter		SportsCenter	
ESPN2	College Basketball		NBA Coast to Coast				Olbermann		Olbermann	
FAM	Pretty Little Liars		Ravenswood		Pretty Little Liars		The 700 Club		Ravenswood	
FOOD	Chopped		Chopped		Chopped		Diners	Diners	Chopped	
FX	Transformers				Justified		Justified		Justified	
HGTV	Property	Property	Property	Property	Hunters	H Hunt.	Beat	Beat	Property	Property
HIST	Cnt. Cars	Cnt. Cars	Cnt. Cars	Cnt. Cars	American	American	American	American	Cnt. Cars	Cnt. Cars
LIFE	Dance Moms		Dance Moms		Kim of Queens		Kim of Queens		Dance Moms	
MTV	Teen Wolf	Wolf	Snooki	Snooki	Snooki & JWOWW		Teen Mom 2		Snooki & JWOWW	
NICK	Full H'se	Full H'se	Full H'se	Full H'se	Full H'se	Full H'se	Friends	Friends	Friends	
SCI	Stargate		G.I. Joe: Cobra				Repo Men			
SPIKE	Man Apart		The Expendables				Rambo			
TBS	Big Bang	Big Bang	Big Bang	Big Bang	Cougar	Big Bang	Conan		Cougar	Conan
TCM	On the Waterfront				The Way We Were				Gandhi	
TLC	My 600-Lb. Life		My 600-Lb. Life		Escaping the Prophet		My 600-Lb. Life		Escaping the Prophet	
TNT	Castle		Boston's Finest		Marshal Law: Texas		Boston's Finest		Marshal Law: Texas	
TOON	Uncle Gra	Adventure	King/Hill	Cleveland	Amer. Dad	Amer. Dad	Fam. Guy	Fam. Guy	Chicken	Aqua Teen
TRAV	Bizarre Foods		Baggage B		Gem Hunt		Bizarre Foods		Baggage B	
TV LAND	Andy Griffith Show		Raymond	Raymond	Raymond	Raymond	Kirstie	The Exes	King	King
USA	Law & Order: SVU		Mod Fam	Mod Fam	Mod Fam	Mod Fam	Mod Fam	Mod Fam	Law & Order: SVU	
VH1	Single Ladies		Couples Therapy		Mob Wives		Movie			
WGN	NBA Basketball				News/Nine		How I Met	Rules	Rules	Parks
Premium Channels										
HBO	Admission				24/7 Red Wings/Maple		Life of Pi			
MAX	Banshee		Banshee		American Reunion					
SHOW	Lawless				Seven Psychopaths					
					Jungle Fever					

50

50

Wednesday Evening

January 8, 2014

	7:00	7:30	8:00	8:30	9:00	9:30	10:00	10:30	11:00	11:30
KAKE/ABC	Middle	Super Fun	Mod Fam	Super Fun	David Blaine		Local	Jimmy Kimmel Live	Nightline	
KBSL/CBS	2 Broke G	2 Broke G	People-Choice				Local	Late Show Letterman	Ferguson	
KSNK/NBC	Revolution		Law & Order: SVU		Chicago PD		Local	Tonight Show w/Leno	J. Fallon	
KSAS/FOX	Step Brothers				Local					
Cable Channels										
A & E	Duck D.	Duck D.	Duck D.	Duck D.	Duck D.	Duck D.	Duck D.	Duck D.	Duck D.	Duck D.
AMC	Titanic								Love	
ANIM	Gator Boys		Finding Bigfoot		Finding Bigfoot		Gator Boys		Finding Bigfoot	
BRAVO	Real Housewives		Top Chef		Top Chef		Happens		Top Chef	
CMT	The Dukes of Hazzard		We Are Marshall						Cops Rel.	
CNN	Anderson Cooper 360		Piers Morgan Live		AC 360 Later		E. B. OutFront		Piers Morgan Live	
COMEDY	Work.	Work.	South Pk	South Pk	South Pk	South Pk	Daily	Colbert	At Midnig	South Pk
DISC	Survivorman		Survivorman		Lone Target		Survivorman		Lone Target	
DISN	Jessie	Liv-Mad.	Good Luck	ANT Farm	Shake It	Austin	ANT Farm	Shake It	Cory	Hannah
E!	Secret Societies of		The Soup		The Soup		Chelsea		E! News	
ESPN	NBA Basketball		NBA Basketball						SportsCenter	
ESPN2	College Basketball		College Basketball				SportsCenter		Olbermann	
FAM	The Hot Chick		Happy Gilmore				The 700 Club		Prince	
FOOD	Restaurant: Im.		Restaurant Stakeout		Restaurant: Im.		Diners		Restaurant Stakeout	
FX	Transformers				Amer. Horror		Amer. Horror		Amer. Horror	
HGTV	Property Brothers		Buying and Selling		Hunters		Property Brothers		Buying and Selling	

AmericanProfile

// CELEBRATING THE AMERICAN SPIRIT //

HIST	American Pickers	American Pickers	American Pickers	American Pickers	American Pickers
LIFE	Kim of Queens	Wife Swap	Wife Swap	Wife Swap	Kim of Queens
MTV	Teen Mom 2	Snooki & JWOWW	The Real World	The Real World	Teen Mom 2
NICK	Full H'se	Full H'se	Full H'se	Full H'se	Friends
SCI	G.I. Joe: Cobra	Indiana Jones			Lost Treasure
SPIKE	The Expendables		Ghost Rider		
TBS	Fam. Guy	Fam. Guy	Big Bang	Big	

Babies

Elsie Marie Helus

Elsie Marie Helus, daughter of Justin Helus and Angie Stephens of Colby, was born Friday, Dec. 6, 2013, at Citizens Medical Center. She weighed 9 pounds, 11 ounces

and measured 20 inches.

Grandparents are Lisa and Stan Stephens of Oakley, Ginger Rupp of Dodge City and Peggy and Kevin Helus of Colby.

Carsen Alan Kincaid

Carsen Alan Kincaid, son of Vanessa Racette and Corey Kincaid of Oakley, was born Thursday, Dec. 19, 2013, at Citizens Medical Center in Colby. He weighed 7 pounds, 2 ounces, and measured 20 inches.

Sister Kelley Kincaid welcomed him home.

Grandparents are Rocky and Aida Racette of Oakley and Frances Kline of Grainfield.

Dylan Emilio Lugo Martinez

Dylan Emilio Lugo Martinez, son of Victor and Tereasa Lugo of Rexford, was born Tuesday, Dec. 17, at Citizens Medical Center. He

weighed 7 pounds, 4 ounces and measured 20 inches.

Sister Mabel welcomed him home.

Morgan Ray Mattix

Morgan Ray Mattix, daughter of Caleb and Shanda Mattix of Colby, was born Monday, Oct. 21, 2013, at Citizens Medical Center in Colby. She weighed 5 pounds, 11 ounces, and measured 20 1/2 inches long.

Grandparents are Sue and the late Bill Draper of Colby and Lee and Jayne Mattix of Independence. Great-grandparents are Willard Morgan of Hoxie and Wayne and Betty Jane Van Dyne of Independence.

Nathan Ismael Tarazon

Nathan Ismael Tarazon, son of Maria Tarazon of Colby, was born Friday, Dec. 27, 2013, at Citizens Medical Center in Colby. He weighed 8 pounds, 15 ounces and

measured 21 inches.

Grandparents are Guadalupe Delgadillo and Raul Tarazon of Tijuana, Baja California, Mexico.

Department of Health helps tobacco users quit

The Kansas Department of Health and Environment can help people keep their resolutions to quit tobacco in 2014. The department offers free cessation support and information online at www.ksQuit.org or toll-free at (800) QUIT-NOW (784-8669) to help tobacco users who are ready to quit.

“Quitting smoking will reduce your risk of many diseases including cancer, heart disease, chronic pulmonary disease and stroke,” said Dr. Robert Moser, state health officer. “Quitting isn’t easy, but it’s worth the reward of a longer and healthier life. Working with a Quit Coach at the Kansas Tobacco Quitline can make quitting easier.”

Quitline enrollment is free and available 24 hours a day, seven days a week (except on major holidays). A coach works with participants during emails, live chats or one-on-one phone calls to prepare for a quit date and create a plan to fight cravings and face other challenges. Studies have found that using a tobacco Quitline can more

than double a person’s chances of successfully quitting tobacco.

Some people fear their resolution to quit tobacco use will hurt their resolution to lose or maintain weight, but planning ahead can help people avoid weight gain. Exercise can be an effective tool in quitting tobacco use. When the urge to use tobacco hits, people can take a walk, go for a short run or participate in another physical activity they enjoy. Instead of replacing smoking or chewing tobacco with sweets or fatty food, people can try chewing sugarless gum or snacking on carrots, celery, other vegetables, air-popped popcorn, dried fruit or nuts.

The Department of Health’s Tobacco Use Prevention Program manages the Kansas Tobacco Quitline and provides resources and technical assistance to community coalitions for development, enhancement and evaluation of state and local tobacco prevention initiatives. For information on the Kansas Tobacco Use Prevention Program, visit www.kdheks.gov/tobacco.

Soaps may not curb bacteria

By Matthew Perrone

AP Health Writer

WASHINGTON (AP) — After more than 40 years of study, the federal government said in December it has no evidence that the anti-bacterial chemicals used in countless common soaps and washes help prevent the spread of germs, and it is reviewing research suggesting they may pose health risks.

Regulators at the Food and Drug Administration said they are revisiting the safety of chemicals such as triclosan in light of studies that suggest the substances can interfere with hormone levels and spur drug-resistant bacteria.

The government’s preliminary ruling lends new support to outside researchers who have long argued that the chemicals are, at best, ineffective and at worst, a threat to public health.

“The FDA is finally making a judgment call here and asking industry to show us that these products are better than soap and water, and the data don’t substantiate that,” said Stuart Levy of Tufts University School of Medicine.

Under a proposed rule, the agency will require manufacturers to prove anti-bacterial soaps and body washes are safe and more effective than plain soap and water. Products not shown to be safe and effective by late 2016 would have to be reformulated, relabeled or removed from the market.

“I suspect there are a lot of consumers who assume that by using an anti-bacterial soap product they are protecting themselves from illness, protecting their families,” said Sandra Kweder, deputy director in the FDA’s drug center. “But we don’t have any evidence that that is really the case....”

Resolve coverage issues for new year

There is not a lot of time to think about insurance during the hectic rush of the holidays, but as you begin the New Year, it is a good idea to evaluate your insurance coverage. We at the Kansas Insurance Department and the National Association of Insurance Commissioners offer these tips and reminders to help with your review.



Sandy Praeger

• Kansas Ins. Commissioner

Homeowners/Renters Insurance

This is a great time to update your home inventory and make sure your homeowners or renters policy is current for your needs. If your holiday decorations are still out of storage, take some photos or video of them. Note any antique items and their value so you can talk with your insurance agent to ensure that they are properly covered.

Now that you have opened all your gifts, remember to add them to your home inventory, too. Include as many details as you can and take a photo of each item. Most basic home insurance policies have standard limits for big-ticket items like electronics, art, jewelry or sporting equipment. You may need special coverage, so be sure to call your agent as soon as possible to discuss changes for your policy.

If you are starting a home inventory from scratch, the association’s free smartphone app, myHOME Scr.APP.book, takes some of the headache out of the process. Download the app from iTunes or Google Play. Also, on our ksinsurance.org website, you can print a hard copy of our Personal Home Inventory booklet; or, you can call us at (800) 432-2484 to request a mailed hard copy.

Auto Insurance

Winter can be a challenge for all drivers. Whether you are trying to escape the weather for someplace warmer or just preparing for another drive to work in the snow, there are a few insurance items you should review.

Make sure your coverage is appropriate for your life situation. Liability is the part of the policy that pays for any injury or damage if you cause an accident. If your liability insurance is too low, it is possible that you could be sued for any damages above your liability limits.

Also take a look at your deductibles for comprehensive and collision coverage. This is the amount you will pay if your car is damaged or totaled without fault of another driver. Raising or lower-

ing deductible amounts can affect your premium.

Before hitting the road, make sure you have a copy of your insurance card and your insurance agent or company’s number in the car. It is also a good idea to have a way to record details of an accident if you are in one. The national association’s smartphone application WreckCheck walks you through the process of gathering information following an accident. You can then email your notes directly to your agent. Again, you can download the free app from iTunes or Google Play.

Health Insurance

Many families recently went through the open enrollment process for their health insurance at work, through the new online insurance marketplace or through Medicare Open Enrollment. This means you may have new insurance cards and paperwork coming in the mail. It is a good idea to get all this information together before winter illness or accidents happen.

Also, if you are getting insurance through the online marketplace, you have until Monday, March 31, to get covered and avoid paying a penalty.

Make sure to check your medical provider lists to verify that visits to your doctor and any specialists are still covered by your policy, because in-network or preferred provider lists could change from time to time. Also read through your documents and make note of your copays for in-network and out-of-network providers so you are not surprised later.

When you’re planning a vacation away from home, check with your insurance carrier to identify urgent care centers and hospitals that accept your insurance coverage near your destination and along the way. Be sure to ask your carrier about applicable co-pays and deductibles if care is needed.

More Information

If you have questions about your insurance options or about your insurance coverage, call our consumer assistance division (in Kansas) at (800) 432-2484. If you want to learn more about insurance in general for all life situations, go online to www.InsureU.org.

Tips: survive cancelled flights

By Scott Mayerowitz

AP Airlines Writer

NEW YORK — A wave of snowstorms and bitter cold temperatures has caused headaches for hundreds of thousands of fliers whose flights have been canceled. Today alone, 1 out of every 10 domestic flights never took off.

In recent years, airlines have cut the number of flights to ensure that most of their planes depart full. That leaves few empty seats to rebook stranded travelers. Passengers are pretty much at the mercy of the airlines. But there are a few things you can do:

• If you miss your connection, the airlines automatically rebook

Markets

Quotes as of close of previous business day Hi-Plains Co-op	
Wheat (bushel)	\$6.35
Corn (bushel)	\$4.19
Milo (hundredweight)	\$7.11
Soybeans (bushel)	\$11.74



JUDY ROGERSGolden Plains High School

King Shane Ryburn and Queen Caitlin Spresser shared their Royal Dance at the Golden Plains High School “Snowflake Swirl” winter dance on Dec. 22. The dance was sponsored by the high school’s dance team. Ryburn is the son of Jodi Ryburn of Angelus and Spresser is the daughter of LeRoy and Renee Spresser of Selden.

Shining Christmas tops Rexford year

Well, the streets have been quiet around here over the Christmas break, but the Christmas lights have been busy shining!

The snow fell on New Year’s Day which reminded us of the Christmas season, but left quickly by the next day.

The last performance of the year was on Dec. 17 at the Golden Plains School, which included the sixth through 12th grade bands and choirs. They did a wonderful job bringing in the Christmas spirit with instruments and their



Laura TerHarr

• Rexford Correspondent

lovely voices.

The Snowflake Swirl winter dance at the high school was Dec. 22.

If you have Rexford news to share, you can contact me at (785) 687-2565 or www.shepherdstaff.org.

Corrections

An obituary for Dorothy Van-Pelt on Page 3 of the Thursday, Jan. 2, *Colby Free Press*, misspelled the name of Bille Jo Rubinfeld and omitted the name of a sister, Wanda (Joe) Gouldsmith. These were errors in editing and

in information provided to the *Free Press*.

☆☆☆☆☆

The Colby Free Press wants to maintain an accurate record of our town. Please report any error or lack of clarity in a news story to us at 462-3963.

Dorothy A. Krehbiel

Inman-Dorothy A. Krehbiel, 89, died January 3, 2014. She was born March 20, 1924 at Moundridge to Benjamin B.J. and Anna (Goering) Goering. She was a homemaker and was a Hutchinson News Paper Carrier for 29 years. She married Walter H. Krehbiel June 3, 1948 at Moundridge. He died May 25, 2000. Survivors include: sons, Kenton K. (Sheila) Krehbiel, Colby and Kevin K. (Sue) Krehbiel, Inman; daughter, Beth A. (Steve) Hanschu, Emporia; brother, Clarence Goering, Moundridge; 6 grandchildren and 5 great-grandchildren. Funeral service will be Tuesday at 10:30 a.m. at the Inman Mennonite Church. Burial will be in the North Inman Cemetery. Friends may call on Monday from 4:00 until 8:00 p.m. with family present from 6:00 until 8:00 p.m. at the Moundridge Funeral Home. Memorial donations are suggested to the Hopi Mission School in Arizona, in care of the funeral home.

2014
NAPA Gold
Filter Sale



January
8th, 9th
& 10th

Come taste Verda’s Famous Sloppy Joes on Wednesday, January 8th, and Thursday, January 9th 11:30 a.m. - 1 p.m.

STAN’S AUTOMOTIVE
785-462-6741

425 N. Martin Ave., Colby KS

Serving you 38 years

All you need to know.™
napafilters.com



ATTN: Area Farm Producers



Is having a complimentary lunch at
El Dos De Oros restaurant on
January 15 at 12 p.m.

Be our guest and learn about our 2014 Confection Sunflower Contract Offering:

- STABLE PRICING
- COMPETITIVE EARNING POTENTIAL COMPARED TO OTHER CROPS
- LOW WATER USAGE CROP/DROUGHT TOLERANT

Please RSVP To: 785-462-3911 by January 14th



Other Viewpoints

Ensuring water means big measures

Dramatic declines in groundwater levels have been recorded for the last two years in the High Plains Aquifer in western Kansas, and when Kansas Geological Survey crews head west this winter, they likely will find a continuation of that trend. In the coming months, survey researchers hope to measure 1,407 wells in central and western Kansas. Similar measurements taken for the last eight year have shown a steady decline in the aquifer. The 3.5-foot drop recorded in 2013 was the second-highest for the eight years – exceeded only by the 4.25-foot drop measured in 2012. Five years of drought in the western third of the state have taken their toll on the aquifer. Declining water levels could threaten not only agriculture, but municipal wells. A lot of people laughed when state water officials rolled out a proposal last month to study the feasibility of the “Kansas Aqueduct Project” to transport water from the Missouri River in the northeast corner of the state to western Kansas. The idea was to draw water out of the Missouri during high flows and transport it about 360 miles through a series of lift stations and canals. The idea, admittedly, is farfetched. Not only is Missouri likely to have something to say about siphoning water out of the river that forms the boundary between the two states, but officials also put the cost at somewhere between \$12.5 billion and \$25 billion. Nonetheless, officials with the state and U.S. Army Corps of Engineers deserve some credit for looking at long-term solutions for what otherwise could be a disastrous development for western Kansas. A 360-mile canal may not be the answer, but there are no easy answers to this situation short of an unexpected long-term change in the area’s weather. There are certain things Kansas officials might be able to control, but they can’t control Mother Nature. Keeping an eye on aquifer levels may help them make a case for significant changes in the region’s agriculture and irrigation practices. Or maybe there’s another solution. The canal plan may seem ridiculous, but, considering the bleak picture that seems to be emerging, it only makes sense to look at all the possibilities.

– The Lawrence Journal-World, via the Associated Press

Where to write, call

U.S. Rep. Tim Huelskamp, 126 Cannon House Office Building, Washington, D.C. 20515. (202) 225-2715 or Fax (202) 225-5124. Web site: huelskamp.house.gov
State Sen. Ralph Ostmeyer, State Capitol Building, 300 SW 10th St., Room 136-E., Topeka, Kan. 66612, (785) 296-7399 Ralph.Ostmeyer@senate.ks.gov
State Rep. Ward Cassidy, (120th District) State Capitol Building, 300 SW 10th St., Room 151-S, Topeka, Kan., 66612, (785) 296-7616 ward.cassidy@house.ks.gov
State Rep. Don Hineman, (118th District) State Capitol Building, 300 SW 10th St., Room 50-S, Topeka, Kan., 66612, (785) 296-7636 don.hineman@house.ks.gov

COLBY FREE PRESS

155 W. Fifth St. (USPS 120-920) (785) 462-3963
Colby, Kan. 67701 fax (785) 462-7749

Send news to: colby.editor @ nwkansas.com

State award-winning newspaper, General Excellence, Design & Layout, Columns, Editorial Writing, Sports Columns, News, Photography. Official newspaper of Thomas County, Colby, Brewster and Rexford.

Sharon Friedlander - Publisher
sfriedlander @ nwkansas.com

NEWS

R.B. Headley - Sports Editor
colby.sports @ nwkansas.com

Marian Ballard - Copy Editor
mballard @ nwkansas.com

Sam Dieter - News Reporter
colby.editor @ nwkansas.com

Heather Alwin - Society Editor
colby.society @ nwkansas.com

ADVERTISING

Kathryn Ballard - Advertising Representative
kballard @ nwkansas.com

Sharon Funk - Advertising Representative
sfunk @ nwkansas.com

Kylee Hunter - Graphic Design
khunter @ nwkansas.com

BUSINESS OFFICE

Office Manager

Melissa Edmondson - Office Manager
medmondson @ nwkansas.com

Evan Barnum - Systems Administrator
support @ nwkansas.com

NOR'WEST PRESS

Richard Westfahl - General Manager
Gary Stewart, Foreman

Jim Jackson, Jim Bowker, Pressmen

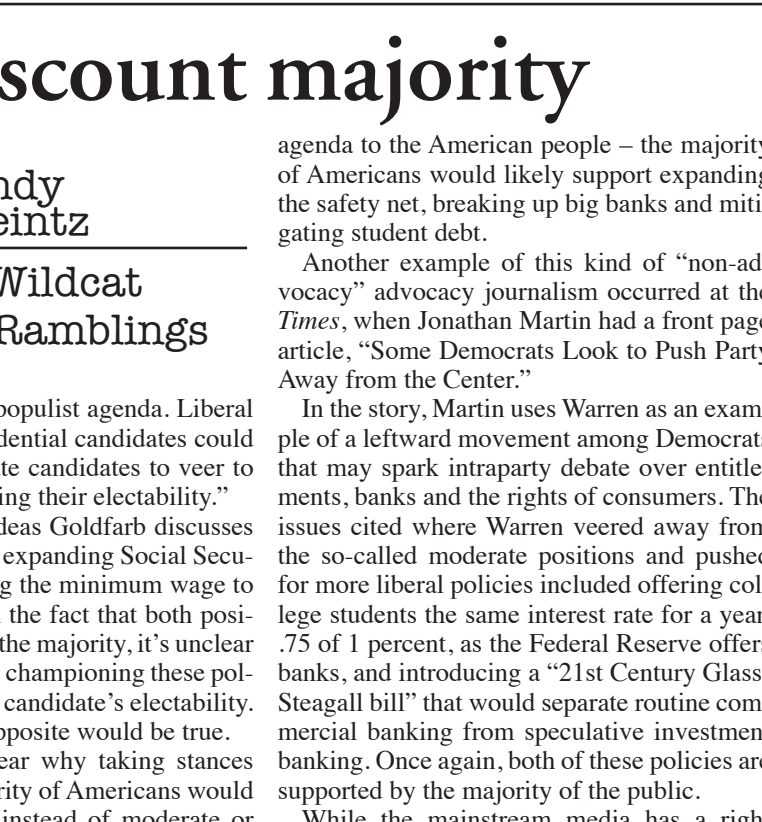
Kris McCool, Judy McKnight, Tracy Traxel,
Sheri Arroyo, Mailing

THE COLBY FREE PRESS (USPS 120-920) is published every Monday, Wednesday, Thursday and Friday, except the days observed for Memorial Day, Independence Day, Labor Day, Thanksgiving Day, Christmas Day and New Year's Day, by Nor'West Newspaper, 155 W. Fifth St., Colby, Kan., 67701.

PERIODICALS POSTAGE paid at Colby, Kan. 67701, and at additional mailing offices. **POSTMASTER:** Send address changes to Colby Free Press, 155 W. Fifth St., Colby, Kan., 67701.

THE BUSINESS OFFICE at 155 W. Fifth is open from 8 a.m. to 6 p.m. Monday to Friday, closed Saturday and Sunday. MEMBER OF THE ASSOCIATED PRESS, which is exclusively entitled to the use for publication of all news herein. Member Kansas Press Association and National Newspaper Association.

SUBSCRIPTION RATES: In Colby, Thomas County and Oakley: three months \$35, one year \$85. By mail to ZIP Codes beginning with 676 and 677: three months \$39, one year \$95. Elsewhere in the U.S., mailed once per week: three months \$39, one year \$95. Student rate, nine months, in Colby, Thomas County and Oakley, \$64; mailed once per week elsewhere in the U.S. \$72



Media labels discount majority

The *New York Times* and the *Washington Post*, arguably the mainstream media’s most elite newspapers, have consistently framed cutting Social Security and Medicare as centrist or moderate positions.

Given the reputation and influence of these two quality newspapers, this unfortunate development shouldn’t be underestimated.

Even in allegedly objective stories, the two papers have labeled the proponents of small cuts to Social Security and Medicare as moderates. What these newspaper outlets define as the moderate is the manifestation of the Washington consensus, which sharply contrasts with the views of the majority of Americans.

While the Beltway elite may have reached a bipartisan consensus that cutting Medicare and Social Security is the thing to do, the majority of Americans overwhelmingly reject this approach. Given the mainstream media’s deference to so-called centrists, it’s no surprise that politicians like Sens. Bernie Sanders (I-Vt.) and Elizabeth Warren (D-Mass.) are depicted as having a liberal agenda, though their position is popular with most Americans.

“But the push from the left carries political risks for Democrats, who could be accused of being reckless about the national debt or insensitive to the demands of business and economic growth,” *Post* reporter Zachary Goldfarb writes, “What’s more, many Americans are uncomfortable with the notion of the government redistributing income far beyond what happens today in order to accomplish



Andy Heintz

- Wildcat Ramblings

basic elements of the populist agenda. Liberal congressional or presidential candidates could pressure more moderate candidates to veer to the left, perhaps reducing their electability.”

Two of the liberal ideas Goldfarb discusses before his warning are expanding Social Security benefits and raising the minimum wage to \$10.10 an hour. Given the fact that both positions are supported by the majority, it’s unclear why Goldfarb believes championing these policies would decrease a candidate’s electability. You might think the opposite would be true.

Moreover, it’s unclear why taking stances supported by the majority of Americans would be considered liberal instead of moderate or centrist. This reaffirms the idea that the terms moderate and liberal has been defined by the literati instead of the American people.

Another subject Goldfarb touches on is the liberal push to narrow inequality, break up massive Wall Street banks, expand the safety net and relieve student debt. While public support for narrowing inequality will depend on the way progressives choose to tackled this problem – and how they decide to sell their

Believe in our college

Napoleon said, “No man leads another without showing him a future. A leader is a merchant of hope.”

Colby Community College is that merchant of hope for all of us. The pursuit of learning, the pursuit of education will continue to be the hope for a richer and fuller life for students and their families.

Whether we are pursuing a two-year associate degree, a transition to four-year degree, or a four hour workshop on using the latest iPad, our college symbolizes, represents and champions the continuous pursuit of knowledge and understanding. This is the greatest strength that *our* college brings to our 14-county community, hope for a better future. Not to minimize the economic benefits of our college, but I believe its greatest value is its ability to inject optimism and hope into our lives, and the future of northwest Kansas – our home.

The college, as a leader, cannot be effective in the process of leadership without followers. In his book “The Courageous Follower,” Ira Chaleff talks about the concept of powerful followers supporting powerful leaders. He notes that courageous followers, leading from behind, can function as agents of change.

The college and its followers work together with mutual respect and honesty to achieve a common purpose. That purpose is the “atomic glue” that binds the college (as leader) and its followers. Followers share a common purpose with the leader and believe in what the college is trying to accomplish. Followers want the leader to succeed.

As followers, we cannot remain static ourselves and improve or grow the college. Per Chaleff, “When followers initiate and take risks, there is a healthy blurring of the line between followership and leadership.” Stephen



Other Opinions

- Barry B. Kaaz CCC (retired)

Covey, in his “7 Habits of Highly Effective People,” reminds us to “be proactive.”

We must remember that change is part of success, and that most good ideas come from the followers. In the book, “Team Secrets of the Navy Seals,” the author notes, “Never underestimate the value of a fresh, innovative and perhaps even abstract point of view.”

The take-away here is that none of us, as followers, should underestimate our ability to influence the college’s direction and success through new, unique ideas and concepts.

In his book, “The Power of Followership,” Robert Kelley emphasizes the power we have as followers: “One American executive related a conversation with a high-ranking Japanese counterpart. The Japanese told him, ‘If I point my hand to the north and say “Go,” four thousand employees will obediently march, even over a cliff.’”

“The American responded, ‘If I were to point my arm north and say, “Go,” four thousand hands would move my arm to the northeast or northwest so that we avoid going over the cliff.’”

It is within this context that we all have a responsibility as followers for the direction and success of our college.

We know success will not come overnight. In “Leadership Lessons from Bill Snyder,” the

Kansas State University coach reminds us that daily improvement will bring long-term success and that we have to balance the focus on this daily improvement with long-range goals. Coach Snyder also reminds us that we are “either moving towards a goal or away from it.” I believe, as followers, we have a responsibility to not only assist in establishment of new ideas and directions, but to assist in monitoring our progress.

As followers, we can assist in the hunt for new ideas and concepts that will help our college serve its 14-county area. We can seek out new trails and “follow the spoor” that leads the college into developing strong partnerships and alliances.

We all have good ideas and concepts that can assist our college as a leader to become an even more powerful, positive driving force in northwest Kansas. It takes courage and time from us to do this. Someone once said, “Life begins at the end of our comfort zone.” And sometimes, I think, we need to remind ourselves that our focus must be on the fight.

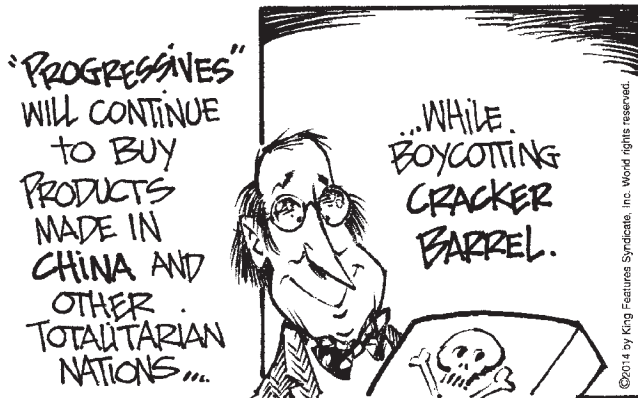
For our college to succeed and grow as a leader in northwest Kansas, we need to believe in it and what we can achieve as followers united supporting a leader. I agree with Steve Haynes that “The future will require clear thinking, a sound plan and above all, a unified effort.”

I truly believe the opportunities for college growth, development, and leadership in northwest Kansas are limitless with a strong implementation of “followership” on our part. Believe in Our College!

Barry B. Kaaz retired in 2013 as dean of external affairs at Colby College, and recently returned there part time as Title III Director. He also works for K-State.

Mallard Fillmore

- Bruce Tinsley



State's commercial vehicle registration, tax changes

The Kansas Department of Revenue, Commercial Motor Vehicle Office is rolling out a new system that will increase compliance with federal and state departments of transportation. The property tax assessed on commercial vehicles will also be replaced with a fee.

The office will now register intrastate and interstate motor carriers in the newly created Commercial Vehicle Registration System. This registration does not affect farm vehicles.

During the 2011 session, the Kansas Legislature passed House Bill 2557 which removed the property tax, also called the ad valorem tax, from commercial vehicles and replaced it with a fee that will be collected at the time of

registration.

Motor carriers operating solely in Kansas as an intrastate motor carrier will receive a new license plate. The new white and purple plate marked "Commercial" will provide an easy reference for law enforcement. Kansas-based motor carriers that drive in other states and currently have an apportioned tag will continue to receive the license plate that is white with red marked "Apportioned."

"The new fees will streamline Kansas' antiquated process tied to fluctuating property taxes and help businesses predict from year-to-year what their registration will cost," said Deann Williams, manager of the Commercial Motor Vehicle Office. "This is leveling the

playing field for all commercial vehicle operators and simplifying the process because the fee will be collected when the vehicle is registered."

The definition of a commercial vehicle is not changing; the federal rules have been in place since July 2000. The system will ensure that all commercial vehicles

are properly registered and comply with federal and state laws. Currently, commercial vehicles should be operating under a U.S. DOT number that will be used to set up the new intrastate commercial vehicle registration account.

A commercial vehicle is used to transport property or passengers and:

- Has a gross vehicle weight or gross combination vehicle weight of 10,001 pounds or more

- Is designed or used to transport 15 or more passengers, including the driver

- Is used to transport hazardous material in a quantity requiring placarding.

If a vehicle meets any one of

the three criteria, it is considered a commercial vehicle.

Information is available in the commercial vehicle registration section of www.truckingks.org, there operators can also check if their county treasurer's office offers commercial vehicle registration or register for a DOT number.

Club for authors to meet here

The seventh district of the Kansas State Author's Club will hold a luncheon meeting at noon Saturday, Jan. 25, in the Colby United Methodist Church's fellowship hall at 950 S. Franklin Ave.

The agenda includes election of officers and a brainstorming session to determine the contests and

programs for meetings for the year. Participants are asked to bring something they have written to read aloud to the group, up to five minutes each.

Prospective members and guests are welcome.

The meal will be free. For information, call Marj Brown at 462-3515.

**friends
don't let friends
drive drunk.**

U.S. Department of Transportation

Ad Council

BUSINESS DIRECTORY

**TO HAVE YOUR AD PLACED IN THE BUSINESS DIRECTORY
CALL KATHRYN OR SHARON TODAY AT (785)462-3963**

Langer Industrial Service

2022 County Road 11 • Levant, KS 67743 • 785-586-2208
Monday - Friday 8 a.m. - 5 p.m.

We pay cash up to for all scrap metal*

- Brass • Copper • Aluminum • Batteries • Electric motors • Cars
- Combines • Farm Equipment • Prepared/Unprepared Iron and Tin
- Container Service • Off site baling and car crushing
- Limited pickup service available

Schedule deliveries after normal business hours by appointment when necessary.

* Some Conditions Apply

ROOFMASTERS

Serving Colby for over 30 YEARS!

RESIDENTIAL	425 East Hill, Colby, KS	COMMERCIAL
Heritage Shingles	785-462-6642	EPDM Rubber
Wood Shingles	Licensed	White TPO Single Ply
IR Shingles	Bonded	Modified Systems
Stone Coated Steel	Insured	Built up Systems
Metal Panels	FREE ESTIMATES	Elastomeric Coating
WHO YA GONNA CALL?		



E'clipse Salon

204 W. 4th Street, Selden, KS

Men, Women & Children Cuts/Styles, Color/Highlights, Perms, Manicures, Waxing & Professional Products

For Appointment Call: 785-386-4108

TUES. - FRI. 9 a.m. - 6 p.m.

SAT. 9 a.m. - 1 p.m.

Evenings By Appointment • Walk-Ins Welcome



Elaine Koerperich
Owner/Stylist

Questions about health care reform?

We have the answers.

You have new health insurance options, but which one is right for you? We can help you understand your options and select the right plan for you and your family.



**I'm ready to help.
Give me a call today!**

Vernon Hurd
Farm Bureau Agent
550 N. Franklin Ave.
Colby, KS 67701
785-269-9511
www.VernonHurd.com

KANSAS FARM BUREAU
The Voice of Agriculture

CoventryOne.

Products available at Farm Bureau Financial Services

CHOKS1765 Health Insurance plans underwritten by Coventry Health and Life Insurance Company. H240B-ML-1 (8-13)

Meadow Lake Restaurant & Lounge

• Open to the Public •

**Monday Nights
\$1 Draws
Saturday Nights
Prime Rib**

MEADOW LAKE
GOLF COURSE & RESTAURANT

785-460-6443

1085 E Golf Club Rd. • Colby, KS



**In the Nation, we step
up for life's moments.**

You were there for their first step. But how do you protect their next ones? By adding Nationwide life Insurance to your financial plan, you can take the first big step toward showing your family how much you care about their future. We put members first because we don't have shareholders.

Join the Nation that walks with confidence.

Contact your Nationwide agent to find out more about life insurance from Nationwide.

Join me in Colby.

Shirley D Skolout
Mountain Plains Agency LLC
1690 W. 4th St., Colby
(785)460-6284
skolos1@nationwide.com



Nationwide
Insurance

Nationwide is On Your Side.®

Products underwritten by Nationwide Mutual Insurance Company and Affiliated Companies, Columbus, Ohio. Not all Nationwide affiliated companies are mutual companies and not all Nationwide members are insured by a mutual company.
Nationwide, Nationwide Insurance, the Nationwide framework, and Nationwide is On Your Side are service marks of Nationwide Mutual Insurance Company.
© 2013 Nationwide Mutual Insurance Company. LAM-187340 (01/13)



JM TREE & LAWN SERVICE

COMPLETE LAWN CARE

- Mowing
- Edging
- Trimming
- Verticut
- Tree Trimming & Removal

Lawn & Tree Spraying & Fertilizing

Sprinkler System Repairs & Installation

Call today to get your FREE estimate

Fully Insured, Bonded, Licensed and Covered by workman's Comp.

**CERTIFIED
WITH KANSAS
DEPT. OF
AGRICULTURE**

**Office: 785-462-6908
Office Manager: 785-443-5708
Owner: 785-443-1339**

CHECK OUT OUR WEBSITE FOR MORE INFORMATION:
WWW.MURRAYENTERPRISES.ORG

Nancy LePell Bookkeeping

165 East 3rd - Colby, KS 67701
785-462-7428

Income Tax Preparation - Individual, Business and Estates
Accounting and Bookkeeping
Business and Financial consultation

Christy Griffith, RTRP Nancy LePell, EA, ChFC, CB
Working to bring you the best possible solutions

NEW SYSTEM PROFESSIONAL WINDOW CLEANING

**(785) 462-6995
(800) 611-6735**

www.MyWindowCleaner.net
Serving Colby since 1992!

Commercial • Residential • Free Estimates



HOXIE STATE INSURANCE, INC.

824 Main, PO Box 378
Hoxie, KS 67740

115 S. State St.
Winona, KS 67764

(785) 675.3263 – Fax (785) 675.3721

KANSAS
Insurance INC

Formerly **THOMAS**
County
INSURANCE
AGENCY

**490 N. Franklin
785-462-3939**

- ♦ Home & Auto
- ♦ Farm & Crop
- ♦ Business Insurance
- ♦ Boat, Motorcycle, RV



Nationwide
Agribusiness

On Your Side®



Dennis Tubbs
dtubbs@kansasins.com

www.kansasins.com



**One combined policy
+ One deductible for it all
One big sigh of relief**



When things go wrong, you need your insurance to go right. Contact me to see how our **one deductible advantage** can help provide you peace of mind when you need it most.

David Browne III
550 N Franklin Ave
Colby, KS 67701
785-462-3388

FARM BUREAU FINANCIAL SERVICES
Insurance • Investments

Auto | Home | Life | Business | College | Retirement
One deductible per occurrence. Securities & services offered through FBS Marketing Services, LLC, 5400 University Ave., West Des Moines, IA 50266, 877-663-2664. Member SIPC. Farm Bureau Insurance Company of America, 1000 North Broadway, Des Moines, IA 50319. Farm Bureau Insurance Company of New York, 1000 North Broadway, New York, NY 10001. Farm Bureau Insurance Company of Wisconsin, 1000 North Broadway, Milwaukee, WI 53201. Farm Bureau Insurance Company of Illinois, 1000 North Broadway, Chicago, IL 60601. Farm Bureau Insurance Company of Michigan, 1000 North Broadway, Detroit, MI 48201. Farm Bureau Insurance Company of Minnesota, 1000 North Broadway, Minneapolis, MN 55401. Farm Bureau Insurance Company of North Dakota, 1000 North Broadway, Grand Forks, ND 58201. Farm Bureau Insurance Company of South Dakota, 1000 North Broadway, Pierre, SD 57501. Farm Bureau Insurance Company of Nebraska, 1000 North Broadway, Omaha, NE 68101. Farm Bureau Insurance Company of Kansas, 1000 North Broadway, Topeka, KS 66601. Farm Bureau Insurance Company of Oklahoma, 1000 North Broadway, Oklahoma City, OK 73101. Farm Bureau Insurance Company of Texas, 1000 North Broadway, Dallas, TX 75201. Farm Bureau Insurance Company of Louisiana, 1000 North Broadway, New Orleans, LA 70112. Farm Bureau Insurance Company of Arkansas, 1000 North Broadway, Little Rock, AR 72201. Farm Bureau Insurance Company of Missouri, 1000 North Broadway, St. Louis, MO 63101. Farm Bureau Insurance Company of Iowa, 1000 North Broadway, Des Moines, IA 50319. Farm Bureau Insurance Company of Wisconsin, 1000 North Broadway, Milwaukee, WI 53201. Farm Bureau Insurance Company of Illinois, 1000 North Broadway, Chicago, IL 60601. Farm Bureau Insurance Company of Michigan, 1000 North Broadway, Detroit, MI 48201. Farm Bureau Insurance Company of Minnesota, 1000 North Broadway, Minneapolis, MN 55401. Farm Bureau Insurance Company of North Dakota, 1000 North Broadway, Grand Forks, ND 58201. Farm Bureau Insurance Company of South Dakota, 1000 North Broadway, Pierre, SD 57501. Farm Bureau Insurance Company of Nebraska, 1000 North Broadway, Omaha, NE 68101. Farm Bureau Insurance Company of Kansas, 1000 North Broadway, Topeka, KS 66601. Farm Bureau Insurance Company of Oklahoma, 1000 North Broadway, Oklahoma City, OK 73101. Farm Bureau Insurance Company of Texas, 1000 North Broadway, Dallas, TX 75201. Farm Bureau Insurance Company of Louisiana, 1000 North Broadway, New Orleans, LA 70112. Farm Bureau Insurance Company of Arkansas, 1000 North Broadway, Little Rock, AR 72201. Farm Bureau Insurance Company of Missouri, 1000 North Broadway, St. Louis, MO 63101. Farm Bureau Insurance Company of Iowa, 1000 North Broadway, Des Moines, IA 50319. Farm Bureau Insurance Company of Wisconsin, 1000 North Broadway, Milwaukee, WI 53201. Farm Bureau Insurance Company of Illinois, 1000 North Broadway, Chicago, IL 60601. Farm Bureau Insurance Company of Michigan, 1000 North Broadway, Detroit, MI 48201. Farm Bureau Insurance Company of Minnesota, 1000 North Broadway, Minneapolis, MN 55401. Farm Bureau Insurance Company of North Dakota, 1000 North Broadway, Grand Forks, ND 58201. Farm Bureau Insurance Company of South Dakota, 1000 North Broadway, Pierre, SD 57501. Farm Bureau Insurance Company of Nebraska, 1000 North Broadway, Omaha, NE 68101. Farm Bureau Insurance Company of Kansas, 1000 North Broadway, Topeka, KS 66601. Farm Bureau Insurance Company of Oklahoma, 1000 North Broadway, Oklahoma City, OK 73101. Farm Bureau Insurance Company of Texas, 1000 North Broadway, Dallas, TX 75201. Farm Bureau Insurance Company of Louisiana, 1000 North Broadway, New Orleans, LA 70112. Farm Bureau Insurance Company of Arkansas, 1000 North Broadway, Little Rock, AR 72201. Farm Bureau Insurance Company of Missouri, 1000 North Broadway, St. Louis, MO 63101. Farm Bureau Insurance Company of Iowa, 1000 North Broadway, Des Moines, IA 50319. Farm Bureau Insurance Company of Wisconsin, 1000 North Broadway, Milwaukee, WI 53201. Farm Bureau Insurance Company of Illinois, 1000 North Broadway, Chicago, IL 60601. Farm Bureau Insurance Company of Michigan, 1000 North Broadway, Detroit, MI 48201. Farm Bureau Insurance Company of Minnesota, 1000 North Broadway, Minneapolis, MN 55401. Farm Bureau Insurance Company of North Dakota, 1000 North Broadway, Grand Forks, ND 58201. Farm Bureau Insurance Company of South Dakota, 1000 North Broadway, Pierre, SD 57501. Farm Bureau Insurance Company of Nebraska, 1000 North Broadway, Omaha, NE 68101. Farm Bureau Insurance Company of Kansas, 1000 North Broadway, Topeka, KS 66601. Farm Bureau Insurance Company of Oklahoma, 1000 North Broadway, Oklahoma City, OK 73101. Farm Bureau Insurance Company of Texas, 1000 North Broadway, Dallas, TX 75201. Farm Bureau Insurance Company of Louisiana, 1000 North Broadway, New Orleans, LA 70112. Farm Bureau Insurance Company of Arkansas, 1000 North Broadway, Little Rock, AR 72201. Farm Bureau Insurance Company of Missouri, 1000 North Broadway, St. Louis, MO 63101. Farm Bureau Insurance Company of Iowa, 1000 North Broadway, Des Moines, IA 50319. Farm Bureau Insurance Company of Wisconsin, 1000 North Broadway, Milwaukee, WI 53201. Farm Bureau Insurance Company of Illinois, 1000 North Broadway, Chicago, IL 60601. Farm Bureau Insurance Company of Michigan, 1000 North Broadway, Detroit, MI 48201. Farm Bureau Insurance Company of Minnesota, 1000 North Broadway, Minneapolis, MN 55401. Farm Bureau Insurance Company of North Dakota, 1000 North Broadway, Grand Forks, ND 58201. Farm Bureau Insurance Company of South Dakota, 1000 North Broadway, Pierre, SD 57501. Farm Bureau Insurance Company of Nebraska, 1000 North Broadway, Omaha, NE 68101. Farm Bureau Insurance Company of Kansas, 1000 North Broadway, Topeka, KS 66601. Farm Bureau Insurance Company of Oklahoma, 1000 North Broadway, Oklahoma City, OK 73101. Farm Bureau Insurance Company of Texas, 1000 North Broadway, Dallas, TX 75201. Farm Bureau Insurance Company of Louisiana, 1000 North Broadway, New Orleans, LA 70112. Farm Bureau Insurance Company of Arkansas, 1000 North Broadway, Little Rock, AR 72201. Farm Bureau Insurance Company of Missouri, 1000 North Broadway, St. Louis, MO 63101. Farm Bureau Insurance Company of Iowa, 1000 North Broadway, Des Moines, IA 50319. Farm Bureau Insurance Company of Wisconsin, 1000 North Broadway, Milwaukee, WI 53201. Farm Bureau Insurance Company of Illinois, 1000 North Broadway, Chicago, IL 60601. Farm Bureau Insurance Company of Michigan, 1000 North Broadway, Detroit, MI 48201. Farm Bureau Insurance Company of Minnesota, 1000 North Broadway, Minneapolis, MN 55401. Farm Bureau Insurance Company of North Dakota, 1000 North Broadway, Grand Forks, ND 58201. Farm Bureau Insurance Company of South Dakota, 1000 North Broadway, Pierre, SD 57501. Farm Bureau Insurance Company of Nebraska, 1000 North Broadway, Omaha, NE 68101. Farm Bureau Insurance Company of Kansas, 1000 North Broadway, Topeka, KS 66601. Farm Bureau Insurance Company of Oklahoma, 1000 North Broadway, Oklahoma City, OK 73101. Farm Bureau Insurance Company of Texas, 1000 North Broadway, Dallas, TX 75201. Farm Bureau Insurance Company of Louisiana, 1000 North Broadway, New Orleans, LA 70112. Farm Bureau Insurance Company of Arkansas, 1000 North Broadway, Little Rock, AR 72201. Farm Bureau Insurance Company of Missouri, 1000 North Broadway, St. Louis, MO 63101. Farm Bureau Insurance Company of Iowa, 1000 North Broadway, Des Moines, IA 50319. Farm Bureau Insurance Company of Wisconsin, 1000 North Broadway, Milwaukee, WI 53201. Farm Bureau Insurance Company of Illinois, 1000 North Broadway, Chicago, IL 60601. Farm Bureau Insurance Company of Michigan, 1000 North Broadway, Detroit, MI 48201. Farm Bureau Insurance Company of Minnesota, 1000 North Broadway, Minneapolis, MN 55401. Farm Bureau Insurance Company of North Dakota, 1000 North Broadway, Grand Forks, ND 58201. Farm Bureau Insurance Company of South Dakota, 1000 North Broadway, Pierre, SD 57501. Farm Bureau Insurance Company of Nebraska, 1000 North Broadway, Omaha, NE 68101. Farm Bureau Insurance Company of Kansas, 1000 North Broadway, Topeka, KS 66601. Farm Bureau Insurance Company of Oklahoma, 1000 North Broadway, Oklahoma City, OK 73101. Farm Bureau Insurance Company of Texas, 1000 North Broadway, Dallas, TX 75201. Farm Bureau Insurance Company of Louisiana, 1000 North Broadway, New Orleans, LA 70112. Farm Bureau Insurance Company of Arkansas, 1000 North Broadway, Little Rock, AR 72201. Farm Bureau Insurance Company of Missouri, 1000 North Broadway, St. Louis, MO 63101. Farm Bureau Insurance Company of Iowa, 1000 North Broadway, Des Moines, IA 50319. Farm Bureau Insurance Company of Wisconsin, 1000 North Broadway, Milwaukee, WI 53201. Farm Bureau Insurance Company of Illinois, 1000 North Broadway, Chicago, IL 60601. Farm Bureau Insurance Company of Michigan, 1000 North Broadway, Detroit, MI 48201. Farm Bureau Insurance Company of Minnesota, 1000 North Broadway, Minneapolis, MN 55401. Farm Bureau Insurance Company of North Dakota, 1000 North Broadway, Grand Forks, ND 58201. Farm Bureau Insurance Company of South Dakota, 1000 North Broadway, Pierre, SD 57501. Farm Bureau Insurance Company of Nebraska, 1000 North Broadway, Omaha, NE 68101. Farm Bureau Insurance Company of Kansas, 1000 North Broadway, Topeka, KS 66601. Farm Bureau Insurance Company of Oklahoma, 1000 North Broadway, Oklahoma City, OK 73101. Farm Bureau Insurance Company of Texas, 1000 North Broadway, Dallas, TX 75201. Farm Bureau Insurance Company of Louisiana, 1000 North Broadway, New Orleans, LA 70112. Farm Bureau Insurance Company of Arkansas, 1000 North Broadway, Little Rock, AR 72201. Farm Bureau Insurance Company of Missouri, 1000 North Broadway, St. Louis, MO 63101. Farm Bureau Insurance Company of Iowa, 1000 North Broadway, Des Moines, IA 50319. Farm Bureau Insurance Company of Wisconsin, 1000 North Broadway, Milwaukee, WI 53201. Farm Bureau Insurance Company of Illinois, 1000 North Broadway, Chicago, IL 60601. Farm Bureau Insurance Company of Michigan, 1000 North Broadway, Detroit, MI 48201. Farm Bureau Insurance Company of Minnesota, 1000 North Broadway, Minneapolis, MN 55401. Farm Bureau Insurance Company of North Dakota, 1000 North Broadway, Grand Forks, ND 58201. Farm Bureau Insurance Company of South Dakota, 1000 North Broadway, Pierre, SD 57501. Farm Bureau Insurance Company of Nebraska, 1000 North Broadway, Omaha, NE 68101. Farm Bureau Insurance Company of Kansas, 1000 North Broadway, Topeka, KS 66601. Farm Bureau Insurance Company of Oklahoma, 1000 North Broadway, Oklahoma City, OK 73101. Farm Bureau Insurance Company of Texas, 1000 North Broadway, Dallas, TX 75201. Farm Bureau Insurance Company of Louisiana, 1000 North Broadway, New Orleans, LA 70112. Farm Bureau Insurance Company of Arkansas, 1000 North Broadway, Little Rock, AR 72201. Farm Bureau Insurance Company of Missouri, 1000 North Broadway, St. Louis, MO 63101. Farm Bureau Insurance Company of Iowa, 1000 North Broadway, Des Moines, IA 50319. Farm Bureau Insurance Company of Wisconsin, 1000 North Broadway, Milwaukee, WI 53201. Farm Bureau Insurance Company of Illinois, 1000 North Broadway, Chicago, IL 60601. Farm Bureau Insurance Company of Michigan, 1000 North Broadway, Detroit, MI 48201. Farm Bureau Insurance Company of Minnesota, 1000 North Broadway, Minneapolis, MN 55401. Farm Bureau Insurance Company of North Dakota, 1000 North Broadway, Grand Forks, ND 58201. Farm Bureau Insurance Company of South Dakota, 1000 North Broadway, Pierre, SD 57501. Farm Bureau Insurance Company of Nebraska, 1000 North Broadway, Omaha, NE 68101. Farm Bureau Insurance Company of Kansas, 1000 North Broadway, Topeka, KS 66601. Farm Bureau Insurance Company of Oklahoma, 1000 North Broadway, Oklahoma City, OK 73101. Farm Bureau Insurance Company of Texas, 1000 North Broadway, Dallas, TX 75201. Farm Bureau Insurance Company of Louisiana, 1000 North Broadway, New Orleans, LA 70112. Farm Bureau Insurance Company of Arkansas, 1000 North Broadway, Little Rock, AR 72201. Farm Bureau Insurance Company of Missouri, 1000 North Broadway, St. Louis, MO 63101. Farm Bureau Insurance Company of Iowa, 1000 North Broadway, Des Moines, IA 50319. Farm Bureau Insurance Company of Wisconsin, 1000 North Broadway, Milwaukee, WI 53201. Farm Bureau Insurance Company of Illinois, 1000 North Broadway, Chicago, IL 60601. Farm Bureau Insurance Company of Michigan, 1000 North Broadway, Detroit, MI 48201. Farm Bureau Insurance Company of Minnesota, 1000 North Broadway, Minneapolis, MN 55401. Farm Bureau Insurance Company of North Dakota, 1000 North Broadway, Grand Forks, ND 58201. Farm Bureau Insurance Company of South Dakota, 1000 North Broadway, Pierre, SD 57501. Farm Bureau Insurance Company of Nebraska, 1000 North Broadway, Omaha, NE 68101. Farm Bureau Insurance Company of Kansas, 1000 North Broadway, Topeka, KS 66601. Farm Bureau Insurance Company of Oklahoma, 1000 North Broadway, Oklahoma City, OK 73101. Farm Bureau Insurance Company of Texas, 1000 North Broadway, Dallas, TX 75201. Farm Bureau Insurance Company of Louisiana, 1000 North Broadway, New Orleans, LA 70112. Farm Bureau Insurance Company of Arkansas, 1000 North Broadway, Little Rock, AR 72201. Farm Bureau Insurance Company of Missouri, 1000 North Broadway, St. Louis, MO 63101. Farm Bureau Insurance Company of Iowa, 1000 North Broadway, Des Moines, IA 50319. Farm Bureau Insurance Company of Wisconsin, 1000 North Broadway, Milwaukee, WI 53201. Farm Bureau Insurance Company of Illinois, 1000 North Broadway, Chicago, IL 60601. Farm Bureau Insurance Company of Michigan, 1000 North Broadway, Detroit, MI 48201. Farm Bureau Insurance Company of Minnesota, 1000 North Broadway, Minneapolis, MN 55401. Farm Bureau Insurance Company of North Dakota, 1000 North Broadway, Grand Forks, ND 58201. Farm Bureau Insurance Company of South Dakota, 1000 North Broadway, Pierre, SD 57501. Farm Bureau Insurance Company of Nebraska, 1000 North Broadway, Omaha, NE 68101. Farm Bureau Insurance Company of Kansas, 1000 North Broadway, Topeka, KS 66601. Farm Bureau Insurance Company of Oklahoma, 1000 North Broadway, Oklahoma City, OK 73101. Farm Bureau Insurance Company of Texas, 1000 North Broadway, Dallas, TX 75201. Farm Bureau Insurance Company of Louisiana, 1000 North Broadway, New Orleans, LA 70112. Farm Bureau Insurance Company of Arkansas, 1000 North Broadway, Little Rock, AR 72201. Farm Bureau Insurance Company of Missouri, 1000 North Broadway, St. Louis, MO 63101. Farm Bureau Insurance Company of Iowa, 1000 North Broadway, Des Moines, IA 50319. Farm Bureau Insurance Company of Wisconsin, 1000 North Broadway, Milwaukee, WI 53201. Farm Bureau Insurance Company of Illinois, 1000 North Broadway, Chicago, IL 60601. Farm Bureau Insurance Company of Michigan, 1000 North Broadway, Detroit, MI 48201. Farm Bureau Insurance Company of Minnesota, 1000 North Broadway, Minneapolis, MN 55401. Farm Bureau Insurance Company of North Dakota, 1000 North Broadway, Grand Forks, ND 58201. Farm Bureau Insurance Company of South Dakota, 1000 North Broadway, Pierre, SD 57501. Farm Bureau Insurance Company of Nebraska, 1000 North Broadway, Omaha, NE 68101. Farm Bureau Insurance Company of Kansas, 1000 North Broadway, Topeka, KS 66601. Farm Bureau Insurance Company of Oklahoma, 1000 North Broadway, Oklahoma City, OK 73101. Farm Bureau Insurance Company of Texas, 1000 North Broadway, Dallas, TX 75201. Farm Bureau Insurance Company of Louisiana, 1000 North Broadway, New Orleans, LA 70112. Farm Bureau Insurance Company of Arkansas, 1000 North Broadway, Little Rock, AR 72201. Farm Bureau Insurance Company of Missouri, 1000 North Broadway, St. Louis, MO 63101. Farm Bureau Insurance Company of Iowa, 1000 North Broadway, Des Moines, IA 50319. Farm Bureau Insurance Company of Wisconsin, 1000 North Broadway, Milwaukee, WI 53201. Farm Bureau Insurance Company of Illinois, 1000 North Broadway, Chicago, IL 60601. Farm Bureau Insurance Company of Michigan, 1000 North Broadway, Detroit, MI 48201. Farm Bureau Insurance Company of Minnesota, 1000 North Broadway, Minneapolis, MN 55401. Farm Bureau Insurance Company of North Dakota, 1000 North Broadway, Grand Forks, ND 58201. Farm Bureau Insurance Company of South Dakota, 1000 North Broadway, Pierre, SD 57501. Farm Bureau Insurance Company of Nebraska, 1000 North Broadway, Omaha, NE 68101. Farm Bureau Insurance Company of Kansas, 1000 North Broadway, Topeka, KS 66601. Farm Bureau Insurance Company of Oklahoma, 1000 North Broadway, Oklahoma City, OK 73101. Farm Bureau Insurance Company of Texas, 1000 North Broadway, Dallas, TX 75201. Farm Bureau Insurance Company of Louisiana, 1000 North Broadway, New Orleans, LA 70112. Farm Bureau Insurance Company of Arkansas, 1000 North Broadway, Little Rock, AR 72201. Farm Bureau Insurance Company of Missouri, 1000 North Broadway, St. Louis, MO 63101. Farm Bureau Insurance Company of Iowa, 1000 North Broadway, Des Moines, IA 50319. Farm Bureau Insurance Company of Wisconsin, 1000 North Broadway, Milwaukee, WI 53201. Farm Bureau Insurance Company of Illinois, 1000 North Broadway, Chicago, IL 60601. Farm Bureau Insurance Company of Michigan, 1000 North Broadway, Detroit, MI 48201. Farm Bureau Insurance Company of Minnesota, 1000 North Broadway, Minneapolis, MN 55401. Farm Bureau Insurance Company of North Dakota, 1000 North Broadway, Grand Forks, ND 58201. Farm Bureau Insurance Company of South Dakota, 1000 North Broadway, Pierre, SD 57501. Farm Bureau Insurance Company of Nebraska, 1000 North Broadway, Omaha, NE 68101. Farm Bureau Insurance Company of Kansas, 1000 North Broadway, Topeka, KS 66601. Farm

Notices

Plum Creek Ltd. Winter Clearance. New Saturday hours for January & February 10-3.
---1/6---1/24---

Happy New Years from that tree guy Kerry at Infinite Connections. Get on his schedule for 2014 - 785-626-4261.
---1/6---1/31---

Dan is back! Dan Geschwentner. Small remodeling and repair jobs. Call 785-443-3673.
---12/15---TFN---

Classified ad deadlines (word ads only). Noon the day before publication (noon Friday for Monday paper). Please check your ad the First time it runs. If you find an error, please call at (785) 462-3963 so it can be corrected, since we will not be responsible for errors after that first day. The Colby Free Press.
---3/1---TFN---

Help Wanted

Temporary, part-time, general chrome shop help wanted. Apply in person at Truck Town, 105 W. Horton Ave., Colby, KS. Please ask for Tori. 785-462-8785
---1/3---1/15---

We are looking for a full-time experienced electrician. Please send resume with references or pick up an application 785-462-6692.
---1/2---1/15---

Homestead Nutrition Project is accepting applications for an assistant cook at the Colby Sr. Center Meal Site. M-F 7:30 a.m. - 1:00 p.m. No evenings, weekends or major holidays. Vac/Sick/Holiday pay and KPERS offered. Please call 1-800-432-7422.
---12/30---1/6---

You have a Pickup & Trailer? Want to work for yourself? We are looking for you!!! We are looking for self motivated & dependable individual looking to work as a wholesale food distributor in Western Kansas. If you are interested in being your own boss email contact info to: guy@just4userv.com.
---12/20---1/27---

Position Available: Looking for an OTR driver, CDL required, clean MVR, have 2 years driving experience, will train the right person, drug testing required. 785-675-8581.
---12/19---1/17---

Wagoner Repair & Performance, 1100 S. Country Club Dr., Colby, KS 785-460-1081. If you are a diesel mechanic or an auto mechanic and you are interested in working decent hours, with weekends by choice, please apply. Health insurance is optional.
---12/18---1/16---

Great Western Tire of Colby, Inc., 1170 S. Country Club Drive, is now accepting applications for all positions. Experience required, but will train the right person. Valid driver's license is a requirement. Full time position includes competitive salary and benefits. Apply in person, EOE. Questions please call 785.462.2100.
---12/4---TFN---

PSI Transport, LLC, is always looking for good company livestock and grain haulers as well as shop mechanics. Competitive pay life/health/dental benefit and bonus program available . EOE (785) 675-3477
---7/13---TFN---

Help Wanted

Carriers needed to deliver the Colby Free Press! Great for someone needing extra income. A few hours a day, 4 days a week. Bonus after 3 months. To apply please stop by the office at 155 W. Fifth St., Colby or for questions call 785-462-3963.
---3/21---TFN---

Help Wanted

Houses for Sale

2 bedroom, 2 bath with one car garage house trailer in Brewster, move in ready, all appliances included \$7,500. 785-462-0528.
---1/2---1/8---

Misc. for Sale

6' Circular Hot Tub, great condition. Asking \$2,400 OBO 785-462-3308.
---1/2---1/15---

Suzuki Concert Master Personal Piano DP88 for sale \$750 - 785-462-2904 or cell 785-269-7012.
---1/2---1/15---

Abernathy solid walnut w/frosty plum finish, dining room table w/2 leaves, 5 chairs, 1 Captains chair & matching buffet \$800. 785-443-1414.
---1/2---1/8---

Refrigerators, electric stoves, gas range, under counter dishwashers, window air conditioners. We do not buy appliances 785-694-8013.
---12/18---1/16---

Pebble Embossed Plastic Banquet rolls 40'x300' (white) \$30 + tax. Can be purchased at the Colby Free Press, 155 W. 5th St.
---3/21---TFN---

Help Wanted

Seed and Feed

1,000 Round Net wrapped cane bales low nitrates. 245 net wrapped straw bales all southwest of Colby 785-443-2571 or 785-462-2012.
---12/23---1/22---

Feed High Quality - 877F Lab tested extra low nitrate all animal safe. Lg Rds. \$120.00 ton, price negotiable. Call 785-332-5600 or 785-332-3914. St. Francis, KS.
---12/20---1/20---

151 Round Bales, 9% Protein, low nitrates, SE Thomas County. 303-202-1000.
---1/2---1/29---

Help Wanted

Pepsi Beverages Company of Colby, KS has an **IMMEDIATE** opening for:
Burlington, CO Part Time Merchandiser

Please review the detailed job descriptions, requirements, and apply online TODAY at www.pepsico.com/careers

PBC is an Equal Opportunity Employer

Help Wanted

Part-time Help Wanted at home-based daycare. Call 785-460-8261 for more information.
---1/2---1/8---

Direct Contact, Inc is currently seeking Field Technicians to assure that all planters are field ready. Calibrations of already installed units, conversions, adjustments, repairs, etc. Interested candidates contact Amy Theobald, 1-800-558-6803, ext. 105 or email amy_theobald@directcontact.com.
---1/3---1/15---

Outside Sales Rep. National company looking for 1-2 sales professionals in NW Kansas. 60-80k Base+Commissions, Benefits and Stock. Interviews Jan. 7th. Call: 720-839-9600.
---1/2---1/8---

High Plains Mental Health Center currently has an opening for either a full time or part time Branch Office Support Staff at our Branch Office in Colby. Qualified candidate should have good secretarial and office skills, handle multi-line phone system, and data entry. Candidate must also successfully pass a KBI background check. Interested applicants - respond via mail to Maureen Mindrup, Human Resources Manager, High Plains Mental Health Center, 208 E. 7th St., Hays, KS. 67601, or by e-mail to Jean Montgomery at jean.montgomery@hpmhc.com. HPMHC is an Equal Opportunity Employer M/F/D/V.
---1/2---1/15---

Available Opportunities...

Regional Drivers Needed in Central and Northwest Kansas

We are seeking safe, hard-working individuals who desire a career with a solid company. Drivers will be home daily and have scheduled days off.

Competitive compensation packages available.

Must have over-the-road tractor trailer experience, a safe driving record and hold a CDL with an X endorsement.

To view a complete list of our career opportunities, visit www.CVRRefining.com/Careers.

Coffeyville Resources Crude Transportation, LLC is an Equal opportunity Employer (EOE). Qualified applicants are considered for employment without regard to age, race, color, religion, sex, national origin, sexual orientation, disability or veteran status.

COFFEYVILLE RESOURCES
CRUDE TRANSPORTATION
A CVR Refining, LP Company

STOP SNORING NOW!

Finally – A Good Night's Sleep For You AND Your Partner



- FDA Cleared and dentist-designed
- Can be used right out of the box
- No special fitting
- No boiling
- Living hinge provides comfort
- Patented technology allows you to sleep and breathe naturally



Try ZQuiet for 30 days for only **\$9.95** price includes shipping!

If ZQuiet doesn't stop your snoring, simply call to return it within 30 days and never pay a penny more.

Call NOW and stop snoring!
1-888-718-2443

Results may vary. ZQuiet addresses simple snoring. ZQuiet is not intended to provide treatment for sleep apnea or other sleep disorders.

STOP SNORING NOW!

Finally – A Good Night's Sleep For You AND Your Partner



- FDA Cleared and dentist-designed
- Can be used right out of the box
- No special fitting
- No boiling
- Living hinge provides comfort
- Patented technology allows you to sleep and breathe naturally



Try ZQuiet for 30 days for only **\$9.95** price includes shipping!

If ZQuiet doesn't stop your snoring, simply call to return it within 30 days and never pay a penny more.

Call NOW and stop snoring!
1-888-718-2443

Results may vary. ZQuiet addresses simple snoring. ZQuiet is not intended to provide treatment for sleep apnea or other sleep disorders.

Advertising at the right time in the right place to the right people will help you grow your business



Call Kathryn or Sharon at the Colby Free Press today!
785-462-3963

COLBY FREE PRESS 155 W. 5th • Colby • 785-462-3963

Help Wanted

Carriers needed to deliver the Colby Free Press! Great for someone needing extra income. A few hours a day, 4 days a week. Bonus after 3 months. To apply please stop by the office at 155 W. Fifth St., Colby or for questions call 785-462-3963.
---3/21---TFN---

Help Wanted

Houses for Sale

2 bedroom, 2 bath with one car garage house trailer in Brewster, move in ready, all appliances included \$7,500. 785-462-0528.
---1/2---1/8---

Misc. for Sale

6' Circular Hot Tub, great condition. Asking \$2,400 OBO 785-462-3308.
---1/2---1/15---

Suzuki Concert Master Personal Piano DP88 for sale \$750 - 785-462-2904 or cell 785-269-7012.
---1/2---1/15---

Abernathy solid walnut w/frosty plum finish, dining room table w/2 leaves, 5 chairs, 1 Captains chair & matching buffet \$800. 785-443-1414.
---1/2---1/8---

Refrigerators, electric stoves, gas range, under counter dishwashers, window air conditioners. We do not buy appliances 785-694-8013.
---12/18---1/16---

Pebble Embossed Plastic Banquet rolls 40'x300' (white) \$30 + tax. Can be purchased at the Colby Free Press, 155 W. 5th St.
---3/21---TFN---

Help Wanted

Houses for Sale

2 bedroom, 2 bath with one car garage house trailer in Brewster, move in ready, all appliances included \$7,500. 785-462-0528.
---1/2---1/8---

Misc. for Sale

6' Circular Hot Tub, great condition. Asking \$2,400 OBO 785-462-3308.
---1/2---1/15---

Suzuki Concert Master Personal Piano DP88 for sale \$750 - 785-462-2904 or cell 785-269-7012.
---1/2---1/15---

Abernathy solid walnut w/frosty plum finish, dining room table w/2 leaves, 5 chairs, 1 Captains chair & matching buffet \$800. 785-443-1414.
---1/2---1/8---

Refrigerators, electric stoves, gas range, under counter dishwashers, window air conditioners. We do not buy appliances 785-694-8013.
---12/18---1/16---

Pebble Embossed Plastic Banquet rolls 40'x300' (white) \$30 + tax. Can be purchased at the Colby Free Press, 155 W. 5th St.
---3/21---TFN---

Help Wanted

Office Space for Rent

Downtown office space for rent, corner location, utilities included with rent. Call Thomas County Insurance 785-462-3939.
---10/3---TFN---

Buildings for Sale

Steel Building Bargains, Allocated Discounts. We do deals 30x40, 50x60, 100x100 and more Total Construction and Blueprints Available www.gosteelbuildings.com. Source #18X - 620-577-4455.
---1/2---1/15---

Vap Construction, the strongest name in steel and post frame buildings. We will beat any Northwest Kansas competitor's price on a comparable project. Contact us for a quote today! (866) 492-1978.
---12/12---1/9---

Buildings for Sale

Steel Building Bargains, Allocated Discounts. We do deals 30x40, 50x60, 100x100 and more Total Construction and Blueprints Available www.gosteelbuildings.com. Source #18X - 620-577-4455.
---1/2---1/15---

Vap Construction, the strongest name in steel and post frame buildings. We will beat any Northwest Kansas competitor's price on a comparable project. Contact us for a quote today! (866) 492-1978.
---12/12---1/9---

Buildings for Sale

Steel Building Bargains, Allocated Discounts. We do deals 30x40, 50x60, 100x100 and more Total Construction and Blueprints Available www.gosteelbuildings.com. Source #18X - 620-577-4455.
---1/2---1/15---

Vap Construction, the strongest name in steel and post frame buildings. We will beat any Northwest Kansas competitor's price on a comparable project. Contact us for a quote today! (866) 492-1978.
---12/12---1/9---

Buildings for Sale

Steel Building Bargains, Allocated Discounts. We do deals 30x40, 50x60, 100x100 and more Total Construction and Blueprints Available www.gosteelbuildings.com. Source #18X - 620-577-4455.
---1/2---1/15---

Vap Construction, the strongest name in steel and post frame buildings. We will beat any Northwest Kansas competitor's price on a comparable project. Contact us for a quote today! (866) 492-1978.
---12/12---1/9---

Buildings for Sale

Steel Building Bargains, Allocated Discounts. We do deals 30x40, 50x60, 100x100 and more Total Construction and Blueprints Available www.gosteelbuildings.com. Source #18X - 620-577-4455.
---1/2---1/15---

Vap Construction, the strongest name in steel and post frame buildings. We will beat any Northwest Kansas competitor's price on a comparable project. Contact us for a quote today! (866) 492-1978.
---12/12---1/9---

Buildings for Sale

Steel Building Bargains, Allocated Discounts. We do deals 30x40, 50x60, 100x100 and more Total Construction and Blueprints Available www.gosteelbuildings.com. Source #18X - 620-577-4455.
---1/2---1/15---

Vap Construction, the strongest name in steel and post frame buildings. We will beat any Northwest Kansas competitor's price on a comparable project. Contact us for a quote today! (866) 492-1978.
---12/12---1/9---

Buildings for Sale

Steel Building Bargains, Allocated Discounts. We do deals 30x40, 50x60, 100x100 and more Total Construction and Blueprints Available www.gosteelbuildings.com. Source #18X - 620-577-4455.
---1/2---1/15---

Vap Construction, the strongest name in steel and post frame buildings. We will beat any Northwest Kansas competitor's price on a comparable project. Contact us for a quote today! (866) 492-1978.
---12/12---1/9---

Buildings for Sale

Steel Building Bargains, Allocated Discounts. We do deals 30x40, 50x60, 100x100 and more Total Construction and Blueprints Available www.gosteelbuildings.com. Source #18X - 620-577-4455.
---1/2---1/15---

Vap Construction, the strongest name in steel and post frame buildings. We will beat any Northwest Kansas competitor's price on a comparable project. Contact us for a quote today! (866) 492-1978.
---12/12---1/9---

Buildings for Sale

Steel Building Bargains, Allocated Discounts. We do deals 30x40, 50x60, 100x100 and more Total Construction and Blueprints Available www.gosteelbuildings.com. Source #18X - 620-577-4455.
---1/2---1/15---

Vap Construction, the strongest name in steel and post frame buildings. We will beat any Northwest Kansas competitor's price on a comparable project. Contact us for a quote today! (866) 492-1978.
---12/12---1/9---

Buildings for Sale

Steel Building Bargains, Allocated Discounts. We do deals 30x40, 50x60, 100x100 and more Total Construction and Blueprints Available www.gosteelbuildings.com. Source #18X - 620-577-4455.
---1/2---1/15---

Vap Construction, the strongest name in steel and post frame buildings. We will beat any Northwest Kansas competitor's price on a comparable project. Contact us for a quote today! (866) 492-1978.
---12/12---1/9---

Buildings for Sale

Steel Building Bargains, Allocated Discounts. We do deals 30x40, 50x60, 100x100 and more Total Construction and Blueprints Available www.gosteelbuildings.com. Source #18X - 620-577-4455.
---1/2---1/15---

Vap Construction, the strongest name in steel and post frame buildings. We will beat any Northwest Kansas competitor's price on a comparable project. Contact us for a quote today! (866) 492-1978.
---12/12---1/9---

Buildings for Sale

Steel Building Bargains, Allocated Discounts. We do deals 30x40, 50x60, 100x100 and more Total Construction and Blueprints Available www.gosteelbuildings.com. Source #18X - 620-577-4455.
---1/2---1/15---

Vap Construction, the strongest name in steel and post frame buildings. We will beat any Northwest Kansas competitor's price on a comparable project. Contact us for a quote today! (866) 492-1978.
---12/12---1/9---

Buildings for Sale

Steel Building Bargains, Allocated Discounts. We do deals 30x40, 50x60, 100x100 and more Total Construction and Blueprints Available www.gosteelbuildings.com. Source #18X - 620-577-4455.
---1/2---1/15---

Vap Construction, the strongest name in steel and post frame buildings. We will beat any Northwest Kansas competitor's price on a comparable project. Contact us for a quote today! (866) 492-1978.
---12/12---1/9---

Buildings for Sale

Steel Building Bargains, Allocated Discounts. We do deals 30x40, 50x60, 100x100 and more Total Construction and Blueprints Available www.gosteelbuildings.com. Source #18X - 620-577-4455.
---1/2---1/15---

Vap Construction, the strongest name in steel and post frame buildings. We will beat any Northwest Kansas competitor's price on a comparable project. Contact us for a quote today! (866) 492-1978.
---12/12---1/9---

Buildings for Sale

Steel Building Bargains, Allocated Discounts. We do deals 30x40, 50x60, 100x100 and more Total Construction and Blueprints Available www.gosteelbuildings.com. Source #18X - 620-577-4455.
---1/2---1/15---

Vap Construction, the strongest name in steel and post frame buildings. We will beat any Northwest Kansas competitor's price on a comparable project. Contact us for a quote today! (866) 492-1978.
---12/12---1/9---

Buildings for Sale

Steel Building Bargains, Allocated Discounts. We do deals 30x40, 50x60, 100x100 and more Total Construction and Blueprints Available www.gosteelbuildings.com. Source #18X - 620-577-4455.
---1/2---1/15---

Vap Construction, the strongest name in steel and post frame buildings. We will beat any Northwest Kansas competitor's price on a comparable project. Contact us for a quote today! (866) 492-1978.
---12/12---1/9---

Buildings for Sale

Steel Building Bargains, Allocated Discounts. We do deals 30x40, 50x60, 100x100 and more Total Construction and Blueprints Available www.gosteelbuildings.com. Source #18X - 620-577-4455.
---1/2---1/15---

Vap Construction, the strongest name in steel and post frame buildings. We will beat any Northwest Kansas competitor's price on a comparable project. Contact us for a quote today! (866) 492-1978.
---12/12---1/9---

Buildings for Sale

Steel Building Bargains, Allocated Discounts. We do deals 30x40, 50x60, 100x100 and more Total Construction and Blueprints Available www.gosteelbuildings.com. Source #18X - 620-577-4455.
---1/2---1/15---

Vap Construction, the strongest name in steel and post frame buildings. We will beat any Northwest Kansas competitor's price on a comparable project. Contact us for a quote today! (866) 492-1978.
---12/12---1/9---

Buildings for Sale

Steel Building Bargains, Allocated Discounts. We do deals 30x40, 50x60, 100x100 and more Total Construction and Blueprints Available www.gosteelbuildings.com. Source #18X - 620-577-4455.
---1/2---1/15---

Vap Construction, the strongest name in steel and post frame buildings. We will beat any Northwest Kansas competitor's price on a comparable project. Contact us for a quote today! (866) 492-1978.
---12/12---1/9---

Buildings for Sale

Steel Building Bargains, Allocated Discounts. We do deals 30x40, 50x60, 100x100 and more Total Construction and Blueprints Available www.gosteelbuildings.com. Source #18X - 620-577-4455.
---1/2---1/15---

Vap Construction, the strongest name in steel and post frame buildings. We will beat any Northwest Kansas competitor's price on a comparable project. Contact us for a quote today! (866) 492-1978.
---12/12---1/9---

Buildings for Sale

Steel Building Bargains, Allocated Discounts. We do deals 30x40, 50x60, 100x100 and more Total Construction and Blueprints Available www.gosteelbuildings.com. Source #18X - 620-577-4455.
---1/2---1/15---

Vap Construction, the strongest name in steel and post frame buildings. We will beat any Northwest Kansas competitor's price on a comparable project. Contact us for a quote today! (866) 492-1978.
---12/12---1/9---

Buildings for Sale

Steel Building Bargains, Allocated Discounts. We do deals 30x40, 50x60, 100x100 and more Total Construction and Blueprints Available www.gosteelbuildings.com. Source #18X - 620-577-4455.
---1/2---1/15---

Vap Construction, the strongest name in steel and post frame buildings. We will beat any Northwest Kansas competitor's price on a comparable project. Contact us for a quote today! (866) 492-1978.
---12/12---1/9---

Buildings for Sale

Steel Building Bargains, Allocated Discounts. We do deals 30x40, 50x60, 100x100 and more Total Construction and Blueprints Available www.gosteelbuildings.com. Source #18X - 620-577-4455.
---1/2---1/15---

Vap Construction, the strongest name in steel and post frame buildings. We will beat any Northwest Kansas competitor's price on a comparable project. Contact us for a quote today! (866) 492-1978.
---12/12---1/9---

Buildings for Sale

Steel Building Bargains, Allocated Discounts. We do deals 30x40, 50x60, 100x100 and more Total Construction and Blueprints Available www.gosteelbuildings.com. Source #18X - 620-577-4455.
---1/2---1/15---

Vap Construction, the strongest name in steel and post frame buildings. We will beat any Northwest Kansas competitor's price on a comparable project. Contact us for a quote today! (866) 492-1978.
---12/12---1/9---

Buildings for Sale

Steel Building Bargains, Allocated Discounts. We do deals 30x40, 50x60, 100x100 and more Total Construction and Blueprints Available www.gosteelbuildings.com. Source #18X - 620-577-4455.
---1/2---1/15---

Vap Construction, the strongest name in steel and post frame buildings. We will beat any Northwest Kansas competitor's price on a comparable project. Contact us for a quote today! (866) 492-1978.
---12/12---1/9---

Buildings for Sale

Steel Building Bargains, Allocated Discounts. We do deals 30x40, 50x60, 100x100 and more Total Construction and Blueprints Available www.gosteelbuildings.com. Source #18X - 620-577-4455.
---1/2---1/15---

Vap Construction, the strongest name in steel and post frame buildings. We will beat any Northwest Kansas competitor's price on a comparable project. Contact us for a quote today! (866) 492-1978.
---12/12---1/9---

Buildings for Sale

Steel Building Bargains, Allocated Discounts. We do deals 30x40, 50x60, 100x100 and more Total Construction and Blueprints Available www.gosteelbuildings.com. Source #18X - 620-577-4455.
---1/2---1/15---

Vap Construction, the strongest name in steel and post frame buildings. We will beat any Northwest Kansas competitor's price on a comparable project. Contact us for a quote today! (866) 492-1978.
---12/12---1/9---

Buildings for Sale

Steel Building Bargains, Allocated Discounts. We do deals 30x40, 50x60, 100x100 and more Total Construction and Blueprints Available www.gosteelbuildings.com. Source #18X - 620-577-4455.
---1/2---1/15---

Vap Construction, the strongest name in steel and post frame buildings. We will beat any Northwest Kansas competitor's price on a comparable project. Contact us for a quote today! (866) 492-1978.
---12/12---1/9---

Buildings for Sale

Steel Building Bargains, Allocated Discounts. We do deals 30x40, 50x60, 100x100 and more Total Construction and Blueprints Available www.gosteelbuildings.com. Source #18X - 620-577-4455.
---1/2---1/15---

Vap Construction, the strongest name in steel and post frame buildings. We will beat any Northwest Kansas competitor's price on a comparable project. Contact us for a quote today! (866) 492-1978.
---12/12---1/9---

Buildings for Sale

Steel Building Bargains, Allocated Discounts. We do deals 30x40, 50x60, 100x100 and more Total Construction and Blueprints Available www.gosteelbuildings.com. Source #18X - 620-577-4455.
---1/2---1/15---

Vap Construction, the strongest name in steel and post frame buildings. We will beat any Northwest Kansas competitor's price on a comparable project. Contact us for a quote today! (866) 492-1978.
---12/12---1/9---

Buildings for Sale

Steel Building Bargains, Allocated Discounts. We do deals 30x40, 50x60, 100x100 and more Total Construction and Blueprints Available www.gosteelbuildings.com. Source #18X - 620-577-4455.
---1/2---1/15---

Vap Construction, the strongest name in steel and post frame buildings. We will beat any Northwest Kansas competitor's price on a comparable project. Contact us for a quote today! (866) 492-1978.
---12/12---1/9---

Buildings for Sale

Steel Building Bargains, Allocated Discounts. We do deals 30x40, 50x60, 100x100 and more Total Construction and Blueprints Available www.gosteelbuildings.com. Source #18X - 620-577-4455.
---1/2---1/15---

Vap Construction, the strongest name in steel and post frame buildings. We will beat any Northwest Kansas competitor's price on a comparable project. Contact us for a quote today! (866) 492-1978.
---12/12---1/9---

Buildings for Sale

Steel Building Bargains, Allocated Discounts. We do deals 30x40, 50x60, 100x100 and more Total Construction and Blueprints Available www.gosteelbuildings.com. Source #18X - 620-577-4455.
---1/2---1/15---

Vap Construction, the strongest name in steel and post frame buildings. We will beat any Northwest Kansas competitor's price on a comparable project. Contact us for a quote today! (866) 492-1978.
---12/12---1/9---

Buildings for Sale

Steel Building Bargains, Allocated Discounts. We do deals 30x40, 50x60, 100x100 and more Total Construction and Blueprints Available www.gosteelbuildings.com. Source #18X - 620-577-4455.
---1/2---1/15---

Vap Construction, the strongest name in steel and post frame buildings. We will beat any Northwest Kansas competitor's price on a comparable project. Contact us for a quote today! (866) 492-1978.
---12/12---1/9---

Buildings for Sale

Steel Building Bargains, Allocated Discounts. We do deals 30x40, 50x60, 100x100 and more Total Construction and Blueprints Available www.gosteelbuildings.com. Source #18X - 620-577-4455.
---1/2---1/15---

Vap Construction, the strongest name in steel and post frame buildings. We will beat any Northwest Kansas competitor's price on a comparable project. Contact us for a quote today! (866) 492-1978.
---12/12---1/9---

Buildings for Sale

Steel Building Bargains, Allocated Discounts. We do deals 30x40, 50x60, 100x100 and more Total Construction and Blueprints Available www.gosteelbuildings.com. Source #18X - 620-577-4455.
---1/2---1/15---

Vap Construction, the strongest name in steel and post frame buildings. We will beat any Northwest Kansas competitor's price on a comparable project. Contact us for a quote today! (866) 492-1978.
---12/12---1/9---

Buildings for Sale

Steel Building Bargains, Allocated Discounts. We do deals 30x40, 50x60, 100x100 and more Total Construction and Blueprints Available www.gosteelbuildings.com. Source #18X - 620-577-4455.
---1/2---1/15---

Vap Construction, the strongest name in steel and post frame buildings. We will beat any Northwest Kansas competitor's price on a comparable project. Contact us for a quote today! (866) 492-1978.
---12/12---1/9---

Buildings for Sale

Steel Building Bargains, Allocated Discounts. We do deals 30x40, 50x60, 100x100 and more Total Construction and Blueprints Available www.gosteelbuildings.com. Source #18X - 620-577-4455.
---1/2---1/15---

Vap Construction, the strongest name in steel and post frame buildings. We will beat any Northwest Kansas competitor's price on a comparable project. Contact us for a quote today! (866) 492-1978.
---12/12---1/9---

Buildings for Sale

Steel Building Bargains, Allocated Discounts. We do deals 30x40, 50x60, 100x100 and more Total Construction and Blueprints Available www.gosteelbuildings.com. Source #18X - 620-577-4455.
---1/2---1/15---

Vap Construction, the strongest name in steel and post frame buildings. We will beat any Northwest Kansas competitor's price on a comparable project. Contact us for a quote today! (866) 492-1978.
---12/12---1/9---

Buildings for Sale

Steel Building Bargains, Allocated Discounts. We do deals 30x40, 50x60, 100x100 and more Total Construction and Blueprints Available www.gosteelbuildings.com. Source #18X - 620-577-4455.
---1/2---1/15---

Vap Construction, the strongest name in steel and post frame buildings. We will beat any Northwest Kansas competitor's price on a comparable project. Contact us for a quote today! (866) 492-1978.
---12/12---1/9---

Buildings for Sale

Steel Building Bargains, Allocated Discounts. We do deals 30x40, 50x60, 100x100 and more Total Construction and Blueprints Available www.gosteelbuildings.com. Source #18X - 620-577

Bulldogs win at St. Francis

The Golden Plains girls' defensive domination continued with a 50-22 triumph at St. Francis Friday evening.

After whipping Weskan 50-12 just before their holiday break, coach Parker Christensen's Bulldogs allowed only two third-quarter points and eight during the entire second half of this first win in 2014.

St. Francis (1-5 record) only trailed 20-14 entering the half-time break. However, Golden Plains (4-2) pulled away during a 16-2 third quarter.

The Indians did split this varsity doubleheader as their boys prevailed 55-38 in Friday's second game against Golden Plains.

Individual stats from both contests were not obtained for today's edition. Complete game stories will likely be featured later this week.

A glance at upcoming area sports activity:

Today

Junior high basketball: Golden Plains vs. Western Plains at Bazine, 4 p.m.

Tuesday

Girls/boys basketball: Colby at Goodland, 6:30/8 p.m.

Men's college basketball: Trinidad State at Colby, 7 p.m.

Tigers never roar as Colby girls win

By R.B. Headley

Colby Free Press
rbheadley@nwkansas.com

Tigers were nipping at their heels all night, but no way was Ulysses catching the cool cats playing for Colby High Friday night.

In fact, control freaks suddenly have a good name after watching the Colby High girls capture a 54-48 varsity win over those visiting Tigers.

"We controlled the game from beginning to end," coach Ryan Becker said about an enjoyable home debut as Colby High's new head coach. "It was a good win. At no point did I ever feel like we were losing control."

Indeed, Colby never trailed and the game's only tie was 0-0. Once junior Hannah Strange broke this ice with an inside basket, the Eagles were taking off on a 14-1 game-opening run.

Ulysses' first worst strategy was leaving Colby sophomore Brenly Terrell open. She buried a pair of early three-point daggers, and sophomore Lara Stephens (six first-quarter points) was equally lethal along the baseline.

Guard Brielle McKee, yet another Eagle sophomore, scored to complete Colby's 20-9 first quarter.

So much for nerves affecting a young Eagles team returning just three varsity players from last season.



There was no escape for this Ulysses Tiger during Friday night's varsity girls basketball game with Colby. Eagle defenders (from left) Hannah Strange, Haileigh Shull, Hailey Schindler and Shaila Giebler surrounded the play during Colby's 54-48 Great West Athletic Conference win.

"We're getting experience game by game," Becker said. "I don't think they were (nervous). They've played here before."

A rough start really didn't rattle the Tigers for long, especially with Ulysses sharpshooter Chisholm

Bransom firing a game-high 20 points through those Colby Community Building baskets.

Ulysses (3-3 record) quickly sliced a 30-20 halftime deficit down to 30-28 about midway through the third quarter.

However, second-half pressure only brought the best out of Colby's Terrell.

The 5'8" guard twice delivered three-point plays after Ulysses closed within two.

Her first regained a 33-28 ad-

vantage; Terrell's second turned the 36-34 margin to 39-34.

Moments later, Terrell's pinpoint pass to junior Shaila Giebler set up another basket just as the third period ended. She scored nine of her 19 points in those eight minutes.

"Brenly stepped up and played her best overall game for sure," Becker observed. "It was good to see her break out tonight."

The Tigers kept chasing, but senior Haileigh Shull (15 points) returned from foul trouble to help seal Colby's first Great West Athletic Conference win this season.

Shull's sizzling pass across the baseline for junior Brooklyn Bange, who hit a clutch corner triple.

Terrell and Shull then took turns making seven free throws in the final quarter.

Colby evened its season record at 3-3. The Eagles visit 4A state-rated Goodland on Tuesday before playing home again against 3A Top 10 Holcomb Friday evening.

"Ulysses is a good ballclub, and the next two will be. It's a very competitive league," Becker concluded.

Colby (54) — Brenly Terrell 19 points, Haileigh Shull 15, Lara Stephens 8, Hannah Strange 5, Brooklyn Bange 3, Shaila Giebler 2, Brielle McKee 2. **Three-point goals:** Terrell 4, Bange. **Rebound leaders:** Shull 9, Terrell 8, Stephens 6. **Assists:** Shull 5, Stephens 3, Terrell 3. **Steals:** Shull 3, McKee 2, Giebler 2.



R.B. HEADLEY/Colby Free Press

Colby High junior Brooklyn Bange, left, battled for this loose basketball with the Ulysses Tigers Friday night. The Eagles' junior varsity and C teams also returned to action with their scores featured below.

Eagle 'C' team wins

The Colby High 'C' girls' 25-9 win highlighted other basketball action against visiting Ulysses Friday evening.

Ulysses did win three other C and junior varsity contests. The JV boys went to double overtime

before those Tigers prevailed 63-57.

Ulysses' JV girls beat Colby, 57-35, while the C boys were 64-12 winners.

The Colby Eagles return to action at Goodland Tuesday night.

Broncos ready for Chargers rematch

DENVER (AP) — The Denver Broncos are 13-3 and own the AFC's top seed, just like last year.

Only this time, they've lost to each of the three remaining teams in the bracket.

The Colts won 39-33 on Oct. 20 in Peyton Manning's unhappy homecoming in Indianapolis.

The Patriots won 34-31 in overtime on Nov. 24 in Wes Welker's disappointing return to New England.

And, San Diego handed the Broncos their only loss in Denver 27-20 on Dec. 12.

The Chargers earned a return trip to the Mile High City by upsetting Cincinnati 27-10 Sunday in the wild-card round. The original AFL teams have never met in the playoffs.

Some Broncos admitted last year they were overly confident after roaring into the playoffs on an 11-game winning streak only to lose 38-35 in double-overtime to Baltimore, a team it had beaten handily on the road in December.

That shouldn't be a problem this time.

The Chargers held the Broncos, the highest-scoring team of the Super Bowl era at 37.9 points a game, to their lowest output of the season last month.

"It's fresh in our minds that if we don't do our best, we can get beat at home," wide receiver Bubba Caldwell said. "Baltimore a year ago, San Diego a month ago."

Denver was without Welker (concussion) against the Chargers that night, which cost them on third down (3 for 8) and in time of possession (22 minutes for Manning, 38 for Philip Rivers).

Ryan Mathews helped the Chargers gain more than 100 yards on the ground on first down, a problem the Broncos addressed with the signing of defensive end Jeremy Mincey a few days later after his release by the Jaguars.

San Diego's win in Denver was one of four straight that helped the Chargers (10-7).

"SD it is! Excited! I'm done with sitting around. Now we have work to do!" guard Zane Beadles tweeted Sunday night.

Eagles drop home opener to Ulysses

By R.B. Headley

Colby Free Press
rbheadley@nwkansas.com

Hopefully, Sunday brought some good rest for the Colby High boys after their 57-44 home loss to Ulysses Friday night.

Coach Kevin Brown said several of his players were battling the dreaded holiday break flu bug, and it showed as Ulysses pulled away from a tight two-point game (35-33) midway through quarter three.

"We had a lot of guys who were fighting it (sickness) tonight," Brown said. "And by the end of the game, we were mentally fatigued. I told the guys to go get some rest so we can start playing healthy."

Senior Luke Cox did deliver a healthy 22-point performance, hitting clutch shots to keep Colby (0-6 record) close into the fourth quarter.

Cox almost equally divided his baskets with five inside and four from beyond the three-point arc.

"It was good to see Luke play aggressively. He seemed to have the most energy tonight," Brown confirmed.

The halftime break seemed to energize all of Colby's players. Trailing 27-20, the Eagles promptly tallied six quick points



R.B. HEADLEY/Colby Free Press

Colby High senior Luke Cox (20) and teammates try to deny Ulysses from any success on this play during Friday night's varsity game at the Colby Community Center.

beginning with senior Marc Bremenkamp's baseline drive and smooth reverse layup.

Senior Cameron Brown drove through Tigers for two more baskets to make it 27-26.

The senior guard soon started another fast break and — even though a teammate's layup rolled out — Brown followed it and forced a 30-30 deadlock.

However, the Eagle momentum seemed to end shortly after this flurry.

Ulysses promptly regained a 35-30 lead which was enough to offset Cox's next three-point swisher.

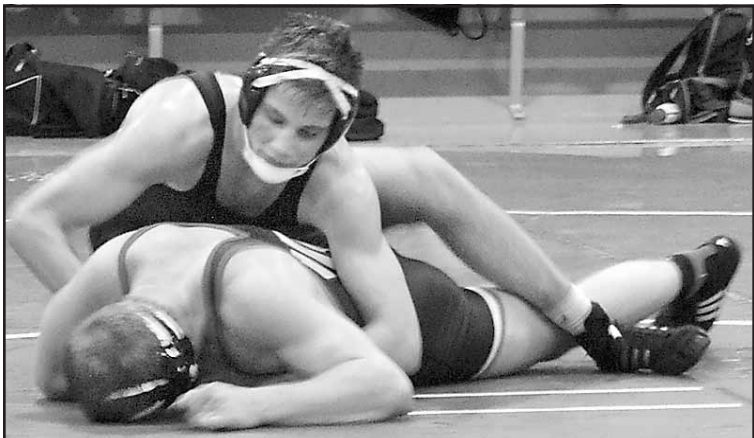
The Tigers continued building their margin, outscoring Colby 14-7 during those final eight minutes.

"We were really concerned about their perimeter play, but their big players inside caused more problems for us," coach Brown said. "They were really a well-coached team."

The Eagles will try to get healthy before another Great West Athletic Conference contest at Goodland Tuesday evening.

They'll return home and take on Holcomb Friday night at the Colby Community Center.

Colby (44) — Luke Cox 22 points, Cameron Brown 12, Marc Bremenkamp 4, Connor Schwanke 2, Donte Whitfield 2, Austin Russ 2. Three-point goals: Cox 4.



DEBBIE SCHWANKE/Colby Community College

Calvin Ochs controlled his 165-pound match while helping the Colby Community College wrestlers win their dual on Friday.

Trojans romp, 42-3

By Debbie Schwanke

Colby Community College

The Colby Community College Trojan wrestlers defeated Western Wyoming Community College 42-3 in a dual held Friday evening at the Colby Elementary School gym.

Hunter Price, 125 pounds, started the dual by pinning his opponent Arthur Tomax in the first period.

Seth Nells followed at 133 by defeating Brennan Schiess. Ronald Wells defeated Chaz Lovato at 141.

The only Trojan loss was Austin Marshall, who was defeated at 149 by Ryan Slauch.

Colby native Konnor Kriss continued the winning streak, defeating Dixon Richins at 157. Calvin Ochs earned four points by defeating Hunter Riggs at 165.

Jared Johnson earned five points with a technical fall against his opponent Austin Beaman at 174.

Rakim Deans added to the Trojan wins by pinning his opponent Jorge Alatorre at 184.

Western Wyoming forfeited at 197 and 285.

Colby victories went to James Jones at 197 and Devanti Ragland at 285.

The Trojans, coached by David Nordhues, will be competing this weekend at the National Duals in Des Moines, Iowa.

Aztecs stun Kansas

LAWRENCE (AP) — It's over now. Another long winning streak inside Allen Fieldhouse is kaput. Kansas' unforgiving non-conference slate is finally done leaving scars. Bill Self can finally stop rehashing missed opportunities at Florida, or last-second losses against Villanova and Colorado.

This latest KU setback — a 61-57 loss against No. 21 San Diego State on Sunday afternoon — featured none of the last-second deflation ... but all of the same frustrating questions. For KU, it was the first non-conference loss at Allen Fieldhouse since 2006, ending a streak of 68 straight victories.

But this was less about the past and more about the future. This Kansas team, armed with the most touted recruiting class in school history and a coach with nine

straight Big 12 titles, was supposed to be a worthy torch-bearer in Self's yearly quest for a Big 12 title ring.

Instead, they'll head into Big 12 play with four losses (the most in the non-conference since 2008-09) and some pressing questions:

How good, exactly, is this particular Kansas team? Good enough to win a 10th straight Big 12 title?

"We're not as good as I thought we'd be, and our players know that," Self said. "I still think we're going to be good, but it's just taken more time than what I thought."

"If I were to sit here and say, 'Yeah, we're right where we need to be, or we're right where I thought we'd be,' then that would be a lie." I thought we'd be a little bit tougher."