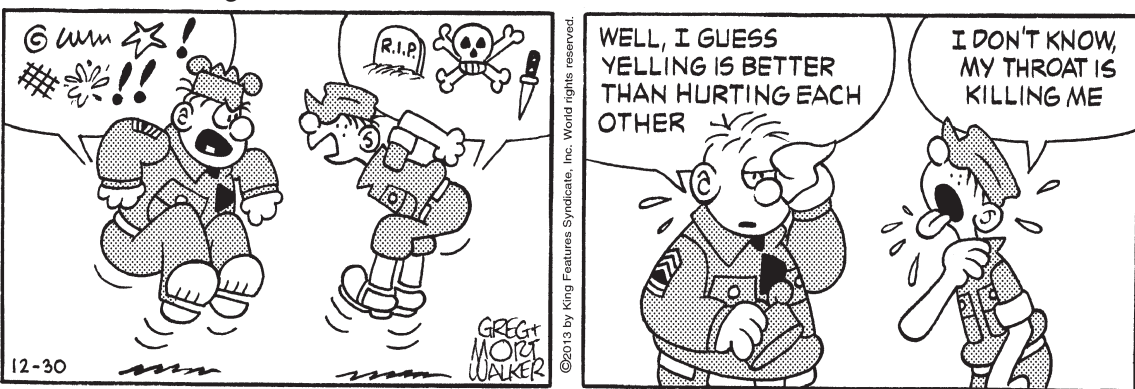


Baby Blues • Rick Kirkman & Jerry Scott



Beetle Bailey • Mort Walker



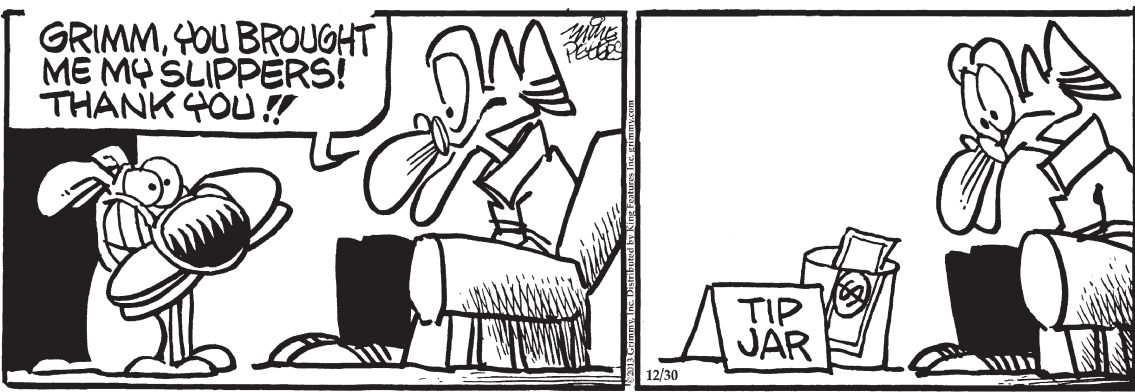
Blondie • Chic Young



Hagar the Horrible • Chris Browne



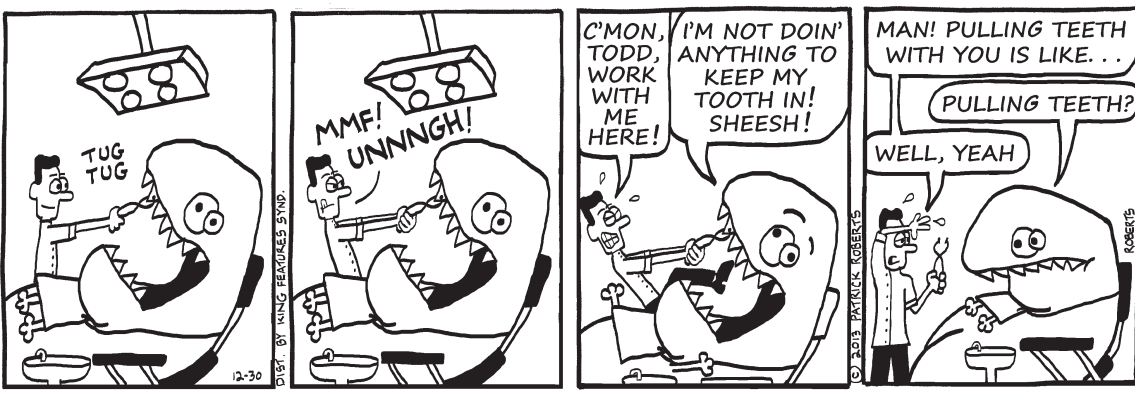
Mother Goose and Grimm • Mike Peters



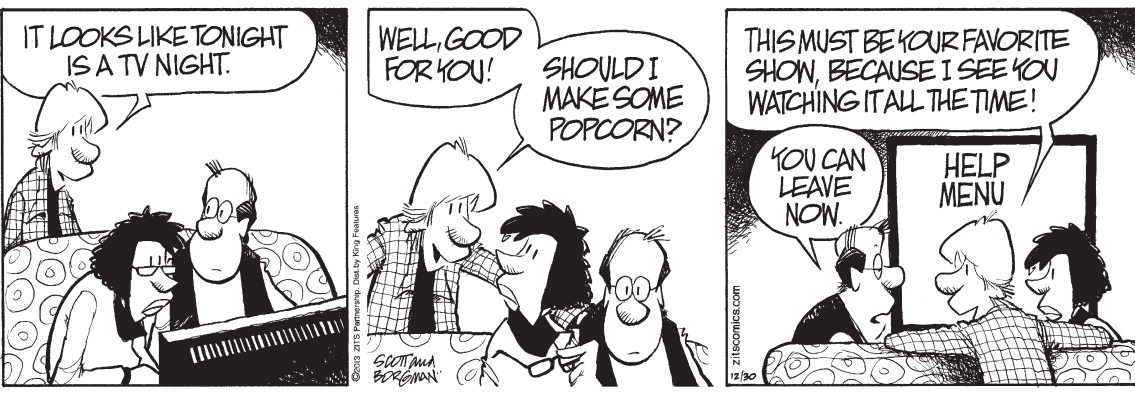
Sally Forth • Greg Howard



Todd the Dinosaur • Patrick Roberts



Zits • Jim Borgman & Jerry Scott



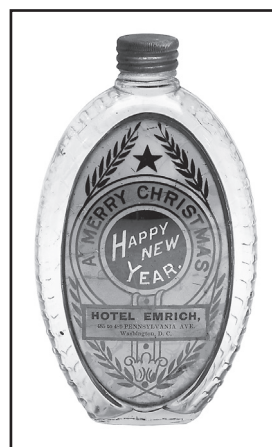
Terry Kovel

• Antiques and Collecting

Gift flasks used to ring in a year

New Year's Eve celebrations have long included alcoholic drinks. A toast to the New Year is part of the party, along with music, noisemakers and a New Year's wish and kiss.

In the early 1900s, bars were the hub of much social activity. Neighborhood folks would eat,



drink and talk as they do today, but of course without a sportscast on a nearby TV set. Gifts from the saloon management to regular customers were expected. In the 1880s, a popular gift was a special small glass flask filled with whiskey. Its label read "Season's Greetings," and included the name of the giver — a hotel, bar or bartender.

These holiday bottles are very collectible today. Price is determined by the shape and color of the bottle and the historic interest in the giver.

Norman C. Heckler & Co., which operates online bottle auctions, recently sold a c.1900 gift bottle from the Hotel Emrich in Washington, D.C., for \$468. It had a label under glass, which added to the value.

Q: My grandmother, who was born in the late 1800s, had some pieces of silverware that I now own. I would like to preserve them and display them in a shadow box for my children. Is there something I can put on the silver to keep it from tarnishing?

A: Silver that is going to be displayed, not used for eating, can be lacquered to prevent tarnish. It should be cleaned before treating. You can have it lacquered by someone who repairs and restores silver, or you can buy a product meant specifically for silver and do it yourself. This can be a difficult process if the piece has an intricate design. Every bit of the silver must be covered and the lacquer must be applied evenly. Lacquer will yellow over time and may crack. You can use Renaissance Wax, a micro-crystalline wax, instead of lacquer, but it will not prevent tarnish for as long. Silver can't be polished once it is lacquered. The lacquer has to be completely removed first. The type of box the silver will be displayed in also is important. It should have an airtight lid, if possible. Don't display the silver on felt, velvet or wool.

(c) 2013 by Cowles Syndicate Inc.

Bridge • Steve Becker

West dealer. North-South vulnerable.

NORTH
♠ J 8 7 3
♥ A Q 10 3
♦ K 8 3 2
♣ A

WEST
♠ Q 10 6 4
♥ J 8 7 5
♦ 7 5
♣ J 8 7

EAST
♠ 9 2
♥ 9 4 2
♦ J 10 9 4
♣ 10 5 4 2

SOUTH
♠ A K 5
♥ K 6
♦ A Q 6
♣ K Q 9 6 3

The bidding:
West North East South
Pass 1♥ Pass 2♣
Pass 2♦ Pass 4NT
Pass 5♥ Pass 5NT
Pass 6♦ Pass 7NT
Opening lead — seven of diamonds.

Famous Hand

This deal occurred in the 1976 World Pairs Olympiad. It was played at 44 tables, but at only five of the 18 tables where a grand slam in notrump was bid did declarer make seven notrump.

The bidding at one table went as shown, and West led the seven of diamonds. South won with the ace, played a club to dummy's ace and cashed the A-K of spades, hoping the queen would fall. When it didn't, declarer cashed the K-Q of clubs, hoping to find either defender with the J-10-x of clubs. In that case, he would have had 13 easy tricks, but this possibility also failed to materialize.

South's chances of making the grand slam were getting worse by the minute, but, undaunted, he next played the king and another heart and successfully finessed dummy's ten, creating this position:

North
♥ A Q
♦ K 8 3

West
♠ Q 10
♥ J 8
♦ 5

East
♥ 9
♦ J 10 4
♣ 10

South
♠ 5
♥ Q 6
♦ 9 6

Declarer cashed dummy's ace of hearts, discarding a spade, and then led the queen of hearts. This last play put East out of commission. It didn't matter whether he discarded a diamond or a club; either way, South would make the grand slam.

(c)2013 King Features Syndicate Inc.

Family Circus • Bil Keane



"The year's almost over. Was I s'posed to do something?"

Conceptis Sudoku • Dave Green

	7	8		5		9		1
		3	8	1	4			
					6	4	8	3
	7		2		3			
9							5	
	4		8		1			
6	8	5	2					
			9	6	3	5		
1	9		7			6	4	

Difficulty Level ★ 12/30

This is a logic-based number placement puzzle. The goal is to enter a number, 1-9, in each cell in which each row, column and 3x3 region must contain only one instance of each numeral. The solution to the last Sudoku puzzle is at right.

1	2	6	4	7	8	3	5	9
5	4	9	1	2	3	7	8	6
3	7	8	9	5	6	4	1	2
6	5	3	8	1	2	9	4	7
7	8	1	6	9	4	2	3	5
2	9	4	7	3	5	1	6	8
4	3	5	2	8	9	6	7	1
8	1	2	3	6	7	5	9	4
9	6	7	5	4	1	8	2	3

Cryptoquip

BO JR ODTGUDV SDPD ORYJW
UBEBJF BJ G NDPKGBJ
KPRQBNGU VSGTQ, SRYUW
XRY VGX BK'V G TGJ-FPRED?

Yesterday's Cryptoquip: THAT ITCH-PRODUCING INSECT IS ENDEMIC TO ECUADOR'S CAPITAL, SO I GUESS IT'S A QUITO MOSQUITO.

Today's Cryptoquip Clue: B equals I

Crossword • Eugene Sheffer

- ACROSS** 37 Column-bus' birthplace 60 Levy parcel of land 12 Factory apparatus 19 Talk on and on 21 "Help!" 23 Youngster 25 Voice of Shrek's Fiona 26 Differently 27 Agents, for short 28 Author Nicholas "The Talk" 29 "If I may interrupt for a huge profit 30 Region 31 Long sandwich 35 Crony 38 One's years 40 Blunder 42 Oust 45 Meditative practice 47 Test tube 48 Loosen 49 Organic fuel 50 Jewel 51 Pub order 52 Crony 54 Put the kibosh on

Saturday's answer 12-30

