

Classifieds

To place your classified ad, mail (155 W. Fifth), fax (785-462-7749), phone (785-462-3963), or stop by our office at 155 W. Fifth

Notices

Craft Show - Nov. 23, 9 a.m. - 2 p.m., College Drive Assembly Church, 245 W. College Dr., Colby, KS.
---11/14---11/21---

4th O'Christmas Tree Open House 3380 W. 4th St., Colby KS, Sunday, December 1, 2013, 1 - 6 p.m. Open December 1 - 21. Week days 8 a.m. - 5 p.m., Saturday 9 a.m. - 6 p.m., Sunday 1 - 6 p.m. 785-443-3448 or 785-443-1064.
---11/13---12/2---

Dan is back! Dan Geschwentner. Small remodeling and repair jobs. Call 785-443-3673.
---12/15---TFN---

Classified ad deadlines (word ads only). Noon the day before publication (noon Friday for Monday paper). Please check your ad the first time it runs. If you find an error, please call at (785) 462-3963 so it can be corrected, since we will not be responsible for errors after that first day. The Colby Free Press.
---3/1---TFN---

Help Wanted

Experienced Electrician needed. Contact Jim's Electric, Inc, 210 E. 2nd, Colby, KS. 785-460-2844.
---11/14--- 11/27---

Seeking entertainment dealers for 12/07/13 in Colby. Will train \$20/hr. Please contact 608-697-8204.
---11/13---11/25---

Rawlins County USD 105 is accepting applications for Part Time Accompanist. To obtain an application, please come to the district office at 205 N. 4th Street 785-626-3236 or go to www.usd105.org. Rawlins County USD 105 is an equal opportunity employer.
---11/13---12/2---

Rig hands for pulling unit to relocate to Trenton, NE. Contact Linda at Berexco LLC 308-334-5680.
---10/25---11/21---

Help Wanted

High Plains Mental Health Center Site Manager - High Plains Mental Health Center currently has an opening for a part time Site Manager for our Colby House to provide on-site apartment management services. Duties include accepting applications, collecting rent and security deposits and some grounds maintenance. Interested person(s) may send cover letter and resume to Daren Hilger at daren.hilger@hpmhc.com or by mail to 208 E. 7th St., Hays, KS. 67601, or you may stop by the branch office at 750 South Range and complete an application. Must successfully pass a background check. Position will be posted until filled.
---11/13---11/25---

USD 275 Triplains is accepting applications for Assistant High School Basketball coach for the upcoming season. Please contact Lamar Bergsten, Triplains School, PO BOX 97, Winona, KS 67764 or call 785-846-7869.
---11/13---11/18---

We are a Custom Meat Processor needing full time, dependable help. Apply in person at Ben Lee Processing, Atwood, KS 785-626-3732.
---11/13---11/25---

Part-Time Personal Assistant. Are you good at helping others, especially children? Developmental Services of Northwest Kansas has a part-time Personal Assistant (PA) position in Selden, Kansas, and this could be an opportunity for you! This is a benefits-eligible position. Duties would include assisting with daily living activities, teaching of life skills, socialization strategies, and coming up with creative indoor & outside activities with parental approval. This position is 30 hours per week. After school hours with some weekends. Schedule can be flexible. Please contact Tami Jantz at 785-625-2521 for more information or apply on-line at www.dsnwk.org. EOE.
---11/13---11/25---

Help Wanted

Drivers: Home Daily! Eagle Express Lines, full-time postal route openings from Oakley to Denver, CO and Topeka, KS! \$20.27 plus \$4.93 Health & Welfare. Apply: www.eagleexpresslines.com.
---11/11---11/15---

McClure Plumbing and Heating, a service oriented company, is accepting applications for HV AC/R technicians. Job entails maintenance, repair and installation of heating, air conditioning and refrigeration systems. Offices located in Colby, KS, and Goodland, KS. Contact Mitch McClure, McClure Plumbing & Heating, Inc., 720 N. Franklin, Colby, KS 67701 Phone 785-462-7314 Fax 785-462-8133.
---11/7---11/20---

Schwan's - Colby, KS Now taking applications! Must be 21 or older, good driving record, active license. Base pay + uncapped commission. Generous benefits package with paid vacation offered! Apply now: www.careers.schwansjobs.com Questions: 785.462.2871 EOE
---11/6---12/2---

Rawlins Count Health Center is hiring a Part Time Nutritional Services Cook. Applications available at www.rchc.us under Careers and may be returned to P.O. Box 47, Atwood, KS 67730 EOE.
---11/6---12/2---

PSI Transport, LLC, is always looking for good company livestock and grain haulers as well as shop mechanics. Competitive pay life/health/dental benefit and bonus program available . EOE (785) 675-3477
---7/13---TFN---

Carriers needed to deliver the Colby Free Press! Great for someone needing extra income. A few hours a day, 4 days a week. Bonus after 3 months. To apply please stop by the office at 155 W. Fifth St., Colby or for questions call 785-462-3963.
---3/21---TFN---

Help Wanted

CDL Drivers - Must be at least 23 years of age, clean MVR, minimum 2 years of driving experience. Hopper experience a plus. Call 785-462-0087.
---9/9---1/3---

Office Space for Rent

Downtown office space for rent, corner location, utilities included with rent. Call Thomas County Insurance 785-462-3939.
---10/3---TFN---

Storage for Rent

Storage units for rent in Colby. Call 785-443-8658.
---11/13---12/9---

Mobile Home for Sale

In Wallace, KS - 14x70, to be moved. Please call 785-821-4781.
---11/14---11/27---

Wanted

Wanted to buy snake root 5 wet & 12 dry, Stockton, KS. Call 785-303-0322.
---11/4---11/15---

Dry land/Irrigated land to cash rent, will pay a premium. 785-567-7837.
---9/12---12/4---

Misc. for Sale

Pebble Embossed Plastic Banquet rolls 40'x300' (white) \$30 + tax. Can be purchased at the Colby Free Press, 155 W. 5th St.
---3/21---TFN---

New front load Whirlpool washer and 2 Maytag dryers 785-443-2862.
---11/11---11/15---

Electric Range \$50, dishwashers, stack washer & dryer, refrigerators, microwave, 785-694-8013.
---11/6---12/2---

Vehicles for Sale

2000 Chevy Malibu Good, clean car 200K hwy miles \$3,000 - O.B.O. Call: 785-460-3883 (leave message).
---11/4---11/15---

Call us before you pay your next insurance premium. American Family Insurance - Rita Peters Agency - Colby 785-462-8246.
---1/18---TFN---

Seed and Feed

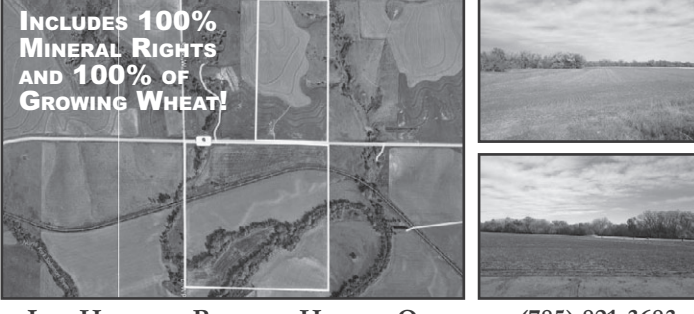
Feed: High Quality 877F. Very low nitrate, safe. \$120.00/ton. Delivery available. St. Francis, KS (785)332-5600 or (785)332-3914.
---11/14---12/11---

LAND AUCTION

240 Acres • Norton County, KS

2 TRACTS OF DRYLAND FARM GROUND, GRASS & HUNTING LAND LOCATED NEAR LENORA, KS • INCLUDES 100% MINERAL RIGHTS

DECEMBER 3RD • 10:30AM
LENORA COMMUNITY BUILDING, KANSAS



LEO HAYDEN - BROKER - HAYDEN OUTDOORS (785) 821-3683
John Leo Hayden - Broker - 1401 Main St., Goodland, KS 67735 - (785) 890-6231

HAYDEN OUTDOORS
FARM, RANCH & RECREATIONAL REAL ESTATE
www.HAYDENOUTDOORS.COM

Participating with
 Cabela's TROPHY PROPERTIES®
www.CabelasTrophyProperties.com

760+/- ACRES CROPLAND & GRASS

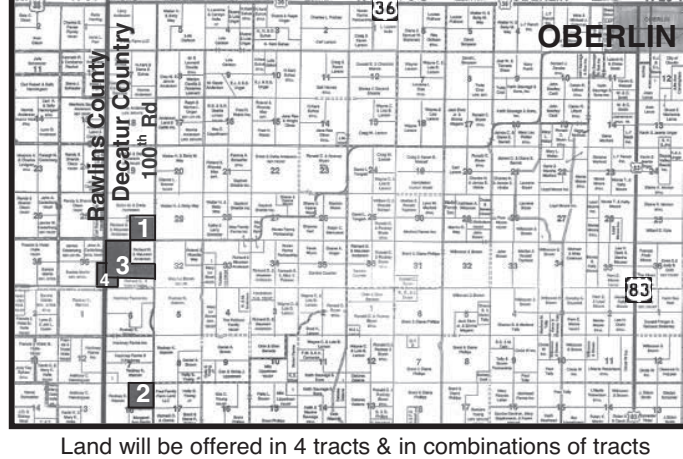
"MULTI-PARCEL" LAND AUCTION

DECATUR & RAWLINS COUNTIES, KANSAS

WED., DEC. 4, 2013 @ 10:30 AM, CST

AUCTION LOCATION:
The Gateway, Oberlin, KS

SELLER:
Gilbert Bryan Family



Land will be offered in 4 tracts & in combinations of tracts

LEGAL DESCRIPTIONS:

TRACT 1: SE/4 of 30-3-30, Decatur Co - 152.5 ac cropland
TRACT 2: NE/4 of 18-4-30, Decatur Co - 126.1 ac cropland & 24.0± ac grass
TRACT 3: NW/4, N/2SW/4 & N/2SE/4 of 31-3-30, Decatur Co - 190.2 ac cropland and 120.6± ac grass
TRACT4: E/2SE/4 of 36-3-31, Rawlins Co & SW/4SW/4 of 31-3-30, Decatur Co - 114.2 ac cropland & 5.8± ac grass

INTERNET BIDDING AVAILABLE!

For a virtual tour & brochure visit
www.farmandranchrealty.com

FARM & RANCH REALTY, INC.

Neal Mann, Listing Agent (785-635-2102)

Mike Bailey, Agent (785-678-8082)

1420 W. 4TH • COLBY, KS 67701

Toll Free: 1-800-247-7863

DONALD L. HAZLETT

BROKER/AUCTIONEER

"When you list with Farm & Ranch, it's as good as SOLD"

Colby Free Press CLASSIFIEDS

785-462-3963

Buy • Sell • Trade

Farm Equipment

1959 Farmall 350 Tractor, spread front wheels, PTO and 3-PT. Very good tires and paint, runs great. Ask about almost new 6ft. 3-PT finishing mower. 785-626-3191.
---11/15---11/21---

Services

Buying Junk Iron: Cars, pickups, wheat trucks, semis, old combines, will clean or pick up iron piles. Chann Fromholtz 785-443-3608. Will pay cash money.
---10/21---12/13---

Tree Trimming & Removal call that tree guy. Kerry at Infinite Connections - Bucket truck, stump grinder, insured, Free Estimates, no mileage charge. 785-626-4261.
---10/21---12/20---

Public Notice

IN THE DISTRICT COURT OF
THOMAS COUNTY, KANSAS

In the Matter of the Estate of
Robert J. Bixenman, Deceased.

Case No. 13 PR 29

NOTICE OF HEARING AND NOTICE TO CREDITORS

THE STATE OF KANSAS TO ALL PERSONS
CONCERNED:

You are notified that on October 29, 2013, a petition was filed in this Court by Teri J. Cloe, Trustee of the Robert J. Bixenman Trust dated April 10, 1992, and four amendments thereto, the fourth amendment being dated November 16, 2012, the devisee and legatee named in the Last Will and Testament of Robert J. Bixenman, dated April 10, 1992, requesting the Will filed with the petition be admitted to probate and record; that Geneva A. Cooper and Florene J. Messamore be appointed as co-executors without bond; that they be granted Letters Testamentary, the "Consent of Spouse", filed herein, be determined a valid consent.

You are required to file your written defenses to the petition on or before December 5, 2013, at 10:00 o'clock AM, in the District Court, Thomas County, Kansas, at which time and place the cause will be heard. Should you fail to file your written defenses, judgment and decree will be entered in due course upon the petition. All creditors are notified to exhibit their demands against the estate within four months from the date of the first publication of notice under K.S.A. 59-2236 and amendments thereto, or if the identity of the creditor is known or reasonably ascertainable, 30 days after actual notice was given as provided by law, and if their demands are not thus exhibited, they shall be forever barred.

Teri J. Cloe, Petitioner

Jerry Fairbanks #09046
FAIRBANKS LAW P.A.
1011 Main - P.O. Box 743
Goodland, KS 67735
Phone: 785-890-6622
Fax: 785-890-6644
Attorney for Petitioner

(Published in the Colby Free Press on
Friday, November 8, 15, 22, 2013)

Public Notice

IN THE DISTRICT COURT OF
THOMAS COUNTY, KANSAS

In the Matter of the Estate of
Mary Helen Bixenman, Deceased.

Case No. 13 PR 30

NOTICE OF HEARING AND NOTICE TO CREDITORS

THE STATE OF KANSAS TO ALL PERSONS
CONCERNED:

You are notified that on October 29, 2013, a petition was filed in this Court by Teri J. Cloe, Trustee of the Mary Helen Bixenman Trust dated April 10, 1992, and four amendments thereto, the fourth amendment being dated September 20, 2012, the devisee and legatee named in the Last Will and Testament of Mary Helen Bixenman, dated April 10, 1992, requesting the Will filed with the petition be admitted to probate and record; that Geneva A. Cooper and Florene J. Messamore be appointed as co-executors without bond; that they be granted Letters Testamentary, the "Consent of Spouse", filed herein, be determined a valid consent.

You are required to file your written defenses to the petition on or before December 5, 2013, at 10:00 o'clock AM, in the District Court, Thomas County, Kansas, at which time and place the cause will be heard. Should you fail to file your written defenses, judgment and decree will be entered in due course upon the petition. All creditors are notified to exhibit their demands against the estate within four months from the date of the first publication of notice under K.S.A. 59-2236 and amendments thereto, or if the identity of the creditor is known or reasonably ascertainable, 30 days after actual notice was given as provided by law, and if their demands are not thus exhibited, they shall be forever barred.

Teri J. Cloe, Petitioner

Jerry Fairbanks #09046
FAIRBANKS LAW P.A.
1011 Main - P.O. Box 743
Goodland, KS 67735
Phone: 785-890-6622
Fax: 785-890-6644
Attorney for Petitioner

(Published in the Colby Free Press on
Friday, November 8, 15, 22, 2013)

FARM MACHINERY & EQUIPMENT

SELLER:
Frahm Family Charitable
Trust, Kenneth & Sheila
Frahm, Trustees

ABSOLUTE

FRI, NOV. 22, 2013 @10:30 AM, CST

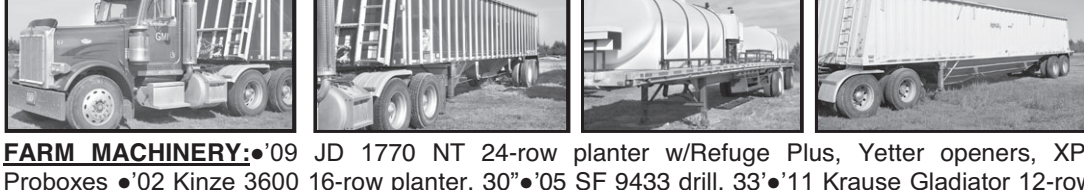
**AUCTION LOCATION: FARM & RANCH AUCTION PAVILION ½ MILE
WEST OF COLBY, KS ON HWY 24.**



TRACTORS, LOADER, SCRAPER, FORKLIFT:•'11 JD 8360R, 5 scv's, QT, 1,580 hrs•'01 JD 8310, FWA, 16 spd, PS, 4 scv's, QT•'94 JD 4960, FWA, 15 spd, PS, 4 scv's, QT•'94 Case IH 7250 Magnum•AC Payloader 345B•JD 860A paddle scraper•Yale forklift
SPRAYER:•'12 JD 4830 sprayer, 1,000 gal SS tank, Green Star ready, 100' booms, hi-flow capacity, Norac auto boom, 438 hrs
COMBINES & HEADERS:•'12 JD S670, 632 eng hrs, 451 sep hrs•'91 JD 9500, 5,400 hrs•'12 JD 635D 35' draper head ;'08 JD 612C corn head, 12-row, 30"•'00 JD 893 corn head, 8-row, 30"•JD 925 wheat head, 25'
GRAIN CARTS:•'10 J&M 1326, 1300 bu, "Grain Storm", RO tarp;Orthman 968, 950 bu



TRUCKS:•'06 Mack, 10 spd, daycab•'00 Sterling, 10 spd, series 60-12.7 Detroit•'97 Peterbilt , 9 spd, CAT 379•'96 Freightliner, 10 spd, Cummins M11•'75 IHC Fleetstar 2050,13 spd, 466 diesel•'88 GMC Sierra 3500 flatbed service truck, Lincoln G8000 welder/generator•'79 Chevy C60 fuel truck, 1500 total capacity•Ford 8000 feed truck, CAT engine, scale and Kuhn-Knight Vertical Maxx 5032 mixer box, 320 cu ft. capacity•2) '01 Ford F-250, 4x4, diesel•'59 Chevy, 261 w/15' Knapheide box & hoist
TRAILERS:•'12 Merritt 42' dbl hopper grain tri•Ferris dbl grain tri•'97 Jet 40' dbl hopper grain tri•'79 Wilson 40' dbl hopper grain tri•Mauer M38 header tri•Raven 45' sprayer tri•Road Runner 750 gal fuel tri•HM 500 gal 12V fuel tri



FARM MACHINERY:•'09 JD 1770 NT 24-row planter w/Refuge Plus, Yetter openers, XP-Proboxes •'02 Kinze 3600 16-row planter, 30"•'05 SF 9433 drill, 33"•'11 Krause Gladiator 12-row strip-till, 30"•SF 1541 41' disc•Patriot pivot track closer•Friesen seed tender•Speed King seed tender•2) Accu Track 3pt guidance systems•Westfield MK 130-91 & 100-71 grain augers•Farm King 10"x71" grain auger •Auger drive-over pit•Various spray tanks•Honda 4 Trax ATV
IRRIGATION ENGINES :•4) JD 4 cyl turbo diesel engines•JD 6 cyl turbo diesel engine
SHOP EQUIPMENT, MISC ITEMS:•Hydraulic press•Rhino 20' mower•Jazee riding mower•9) 2,000 gal diesel tanks•Misc shop equipment•Oil barrel rack•Metal lathe

ON-LINE BIDDING AVAILABLE!

CALL FOR A BROCHURE OR VISIT www.farmandranchrealty.com

FARM & RANCH REALTY, INC.

1420 W. 4th * Colby, KS 67701

(785) 462-3904 * (800) 247-7863

DONALD L. HAZLETT

BROKER/AUCTIONEER

"When you list with Farm & Ranch, it's as good as SOLD!"