


Lookin' for a home



SAM DIETER/Colby Free Press

This 10 month-old terrier mix needs a place to live. Call the Colby Animal Clinic at 460-8621 to give him a home.

Brewster Schools name first quarter honor roll

The Brewster School District has released the honor roll for the first nine-week grading period. Students on the Superintendent's Honor Roll have earned a 4.0 grade average. Those on the Principal's Honor Roll have averages of 3.5 to 3.99. Those on the Honor Roll have 3.0 to 3.49 grade averages.

High School
Superintendent's Honor Roll
 Juniors: Dara Roulier.
 Sophomores: Rachel Friess.
Principal's Honor Roll
 Seniors: Tanner Abbott.
 Juniors: Alicia Barrie, Layton Werth.
 Sophomores: Taylyr Cheatum, Justin Schmidt.
 Freshmen: Tad Holm, Jaden Schmidt.

Honor Roll
 Seniors: Ashley Barrie, Justin Culwell, Yumi Inagaki, Katera Johnson.

Junior: CJ Felzien, Jace Jorgensen.
 Sophomores: T-Aera Abbott, Sophia Williams.
 Freshmen: Dalton Armtt, Kylee Cheatum.

Junior High
Superintendent's Honor Roll
 Sixth Grade: Weston Schmidt .
Principal's Honor Roll
 Seventh Grade: Mikenna Han-evik.
 Sixth Grade: Genesis Aguilar, Morgan Bryant, Jason Clymer, Cameron Ford-Gillen.
Honor Roll
 Eighth Grade: Austin Bear, Jacob Benham, Koebe Lorg, Adrian Mercado, Levi Rall.
 Seventh Grade: Karlee Brown, McKedzie Clymer, Desmond Purvis, Brett Roulier.
 Sixth Grade: Noah Fahey, Thomas Martinez, Sarah Myers, Autumn O'Brian.

Stilton can't make stilton?

LONDON (AP) – They make fine cheese in the English village of Stilton. Just don't call it stilton. British authorities said that a local pub can't market its blue-veined cheese as stilton because that name is protected by European Union legislation.

The Bell Inn has been forced to sell its cheese as "Bells Blue" rather than stilton.

The EU rules, based on British government guidelines, say the name can only apply to cheese from the English counties of Leicestershire, Derbyshire and Nottinghamshire, where it has long been made.

Stilton lies outside that area, but became renowned for selling the sharp-tasting cheese in the 18th century. It gave its name to the product, but historians are divided about whether it was made there.

A local cheese company asked the government to amend the Protected Designation of Origin rules to include Stilton. But the food ministry said it could only consider an application from the pub, the maker of the cheese.

"If there were an application from the Bell Inn, we would consider it," the Department for Environment, Food and Rural Affairs said.

Yellow fall wheat has various causes

The most common causes of yellow wheat in the fall are:

- Poor root growth. This may be due to dry soils or poor seedbed conditions at planting time. If the plants have been emerged for several weeks or more, can be pulled up easily and have only a couple of primary roots visible, then the plants are yellow because the root systems are not extensive enough to provide enough nutrients. After a few weeks, plants should be developing secondary roots and the color should be nice and green.
- Nitrogen deficiency. Nitrogen deficiency causes an overall yellowing of the plant with the lower leaves yellowing and dying from the leaf tips inward. Nitrogen deficiency also results in reduced tillering, top growth and root growth in the fall. The primary causes of nitrogen deficiency are insufficient fertilizer rates, leaching from heavy rains, and the presence of heavy amounts of crop residue, which immobilize nitrogen.
- Leaf rust or tan spot. If leaf rust infects young seedlings in the fall, the plants may turn yellowish. Fall infections of leaf rust are not common in Kansas, but can occur. Producers will be able to see pustules on the leaves. Tan spot can also cause wheat to turn yellow in the fall. Viral diseases, such as soil-borne mosaic, wheat streak mosaic, and barley yellow dwarf can infect wheat in the fall, but yellowing symptoms do not normally show up until early spring. It rarely, if ever, pays to treat fields in the fall for leaf rust or tan spot, even if those diseases do cause yellowing. Cold temperatures in the winter normally cure this problem
- Cold temperatures. Wheat that has not yet emerged may come up later than normal, when the weather is cold. When temperatures are quite cold at the time wheat emerges, it can result in yellow banding on the leaves. If this is the cause of the yellowing, symptoms should eventually fade away.



Kurt Sexton
 • Knowledge for Life

ciency, insect feeding injury and herbicide carryover problems.

Drought stress is an obvious cause of poor vigor, and needs no explanation or special diagnostic skills. If the wheat is not under drought stress and is not chlorotic or nitrogen-deficient, but still appears off-color or has poor vigor, it will take some effort to determine the problem. In this case, the farmer should dig up some plants and look at the roots, take a routine soil test for pH, phosphorus and potassium, determine the recent history of herbicide applications and examine the field for insects.

- Low pH. Aluminum toxicity begins to occur where soil pH levels are less than 5.0 and free aluminum levels are greater than 25 parts per million. The symptoms of aluminum toxicity include poor tillering and sometimes (but not always) a purplish color. Older leaves may appear drought stressed and withered. Plants will either be stunted throughout the season, even with adequate moisture and nitrogen, or die.
- Low phosphorus. Phosphorus deficiency symptoms are not common on seedling wheat, but can occur under extreme conditions. Symptoms will include stunting and purpling of the leaves.
- Hessian fly. Seedlings infested by Hessian fly in the fall are typically not yellow, but are often stunted. Affected plants usually have an unusually large, broad greenish leaf for about a month in the fall. Stem elongation is typically much shorter than normal.
- Atrazine carryover. Wheat planted into soils with atrazine residue emerges then dies back from the tips of the oldest leaves first. Atrazine carryover is most likely to occur where there were high application rates, high soil pH, coarse-textured soils and under dry conditions.

Kurt Sexton is the Thomas County agriculture and natural resources agent with Kansas State Research and Extension. A native of Colorado, Sexton works with area 4-H clubs, farmers and ranchers.

Technology team earns honors in Branson

Three Northwest Kansas students were part of a team from Fort Hays State University to earn two first-place finishes at the 76th International Technology and Engineering Educators Association's Regional Conference in Branson, Mo.

The university's Technology Education Collegiate Association, which won the awards, was represented by 15 students total, including sophomore Kellan Ziegelmeier of Colby, a technology studies major on the association's manufacturing team; sophomore Chase Berg of Gem, a technology studies major on the manufacturing and technology challenge teams; and freshman Cole Studer of Atwood, a technology studies major on robotics, problem solving and technology challenge

teams.

The robotics team won the regional robotics championship, and the manufacturing team also placed first.

Two problem-solving teams placed just outside the top three with their Angry Birds launcher. Two technology challenge teams also placed fourth.

The competition is a prelude to the national spring conference of the International Technology and Engineering Educators Association.

Send us your recipes

The Colby Free Press is looking for recipes from area cooks to feature in our holiday gift guide. Do you have a favorite you'd like to share?

Send a copy to colby.society@nwkansan.com or drop it by our office at 155 W. Fifth St. in Colby. Include your name and phone number. Deadline for submissions is Wednesday, Nov. 13.

Babies

Tyler Brisbane Starns

Tyler Brisbane Starns, son of Andrew and Sarah Starns of Winona, was born Sunday, Oct. 20, 2013, at Citizens Medical Center. He weighed 7 pounds, 8 ounces, and measured 20 inches.

Grandparents are Brent and Diana Flanders of Edson, John and Carrie Starns of Winona and Terry Starns of Brewster.



Tyler Starns



Addison C.

Addison Kay Crittenden

Addison Kay Crittenden, daughter of Brian Crittenden and Alexis Culbertson of Colby, was born Thursday, Oct. 10, 2013, at Citizens Medical Center. She weighed 6 pounds, 10 ounces, and measured 20 1/2 inches.

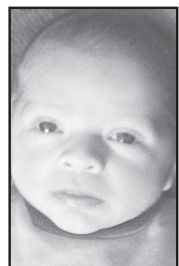
Grandparents are Wade and Christine Culbertson of Rose Hill and Randy and Janet Crittenden of Tribune.

Lincoln Martin Hernandez

Lincoln Martin Hernandez, son of Eder Hernandez and Emily Simon of Goodland, was born Friday, Oct. 18, 2013, at Citizens Medical Center. He weighed 7 pounds, 8 ounces, and measured 20 inches.

Brother Quinton and sister Kenadie welcomed him home.

Grandparents are Terri Riedel of Colby, Raymond Simon of Minneapolis, Kan., Manuel Hernandez of Goodland and Reina Hernandez of Las Cruces, N.M. Great-grandparents are Larry and Rita Weber of Grainfield and Mary Francis Flax of Ransom.



Lincoln H.

Madelyn Castañeda

Madelyn Castañeda, daughter of Lizbeth and Pablo Castañeda of Rexford, was born Monday, Oct. 28, 2013, at Citizens Medical Center. She weighed 8 pounds, 4 ounces and measured 19 1/2 inches.

Brother Pablo Santiago welcomed her home.



Madelyn C.



Brecken Lock

Brecken Ann Lock

Brecken Ann Lock, daughter of Derek and Melissa Lock of Oakley, was born Saturday, Oct. 19, 2013, at Citizens Medical Center in Colby. She weighed 6 pounds, 14 ounces, and measured 19 inches.

Sister Emma Jane Lock welcomed her home.

Grandparents are Lee and Pauline Lock of Wallace, Terry and Lori Clark of Lawrence and John and Beth Swenson of Charleston, Ark.

Herndon feast falls on opening weekend

St. Mary's Assumption Catholic Church of Herndon will hold its annual fall festival on Sunday in conjunction with the Kansas pheasant season opening weekend.

The church invites everyone to attend.

The event features a turkey and ham dinner, mashed potatoes and gravy, salads, desserts and more, served for a freewill offering from 11:30 a.m. to 1:30 p.m.

Drawings for cash prizes will take place during the Bingo break. Parish members are selling tickets now, and tickets will be available at the dinner.

The parish's children and youth organization has several games planned for children.

For information, contact Beth Chartier at (785) 322-5532, Eileen Unger at (785) 322-5318 or Nadine Green at (785) 322-5583.

Markets

Quotes as of close of previous business day	
Hi-Plains Co-op	
Wheat (bushel)	\$7.07
Corn (bushel)	\$4.20
Milo (hundredweight)	\$7.09
Soybeans (bushel)	\$11.58

Corrections

The Colby Free Press wants to maintain an accurate record of our town. Please report any error or lack of clarity in a news story to us at 462-3963.

Find what you're looking for in the classifieds!



155 W. Fifth Colby KS 785-462-3963

COLBY FREE PRESS

Thank You

Thanks to all my family & friends that attended my retirement party from Sunflower Bank. Also to everyone who sent cards, flowers & gifts. I really appreciated your thoughtfulness. Special thanks to my great co-workers for the reception they held for me. Also for everything they have done for me over the years.

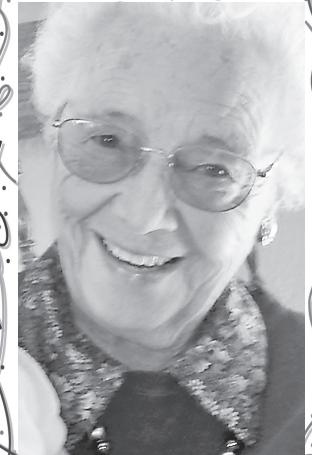
Joyce Rohn

American Legion Post 363
 1850 W. 4th St.



Pheasant Hunters Feed
Friday, November 8th
6:00 to 8:00 p.m.
ALL-YOU-CAN-EAT
BULL FRIES • FISH • CHICKEN STRIPS
 \$15 per person donation

Help us Celebrate



Eleanor Rogers' 90th Birthday
Nov. 10, 2013
Card Shower
Box 162
Selden, KS 67757

OUR NEWEST LOCATION!

MOBILE BANKING
Anywhere, Anytime

Enroll Today
and receive a FREE stylist pen!



Online Bill Pay is coming in December!



Farmers & Merchants Bank of Colby
 Member FDIC

Got news? Tell us! Call 462-3963