

Briefly

The deadline for Briefly is noon the day before. Items submitted in the morning will be set up for the next edition. The deadline for Monday's paper is noon Friday.

No trash pickup on Memorial Day

The Colby Public Works Department will be closed for Memorial Day. The Monday residential route will be picked up Tuesday; have grass and trash at the curb by 8 a.m. Call Public Works Director Omar Weber at 460-4420 for information.

The Thomas County landfill will close at noon Saturday and remain closed until 9 a.m. Tuesday. For information, call supervisor Larry Jumper at 462-8139.

Conservation district offering money

The Thomas County Conservation District will be taking applications for cost-share assistance from Tuesday through Friday, June 28. Eligible projects include septic system replacement, terracing or terrace restoration, diversions, livestock water tanks and wells and new windbreaks. For the complete list, call the office at 462-7482 or stop by 915 E. Walnut in Colby. Contracts approved will expire on June 1, 2014.

College equestrian team to teach riders

Let the Colby Community College equestrian team teach you how to ride. The team plans a horsemanship camp for riders 12 to 17 from Sunday to Wednesday, a beginner horsemanship camp on Thursday and a young showman camp next Friday. All will be taught by team members. For information, call equestrian coach Shanda Matix at 460-5464.

Scholarship open to women in county

The Colby Branch of the American Association of University Women is accepting applications for a two-year scholarship for Thomas County women who will be juniors or seniors in college this fall. Application deadline is Saturday, June 1. Pick up a form at the Pioneer Memorial Library or by contacting Patricia Erickson at perickson@st-tel.net or 462-3890.

Selden Tractor Show coming up June 2

The 20th Annual Selden Antique Tractor and Classic Car Show will be Sunday, June 2, on Main Street in Selden, including tractors, cars, classic motorcycles and small engines. Bring your own lawn chairs. There are no admission or entry fees. The event is sponsored by the Selden Community Foundation. For information, call Judy Rogers at (785) 386-8033.

We want your local news: e-mail to colby.editor@nwks.com

Weather

Motor home overturns near Brewster

A small motor home, carrying an older couple from near Topeka plus four children, jumped a guard rail on Interstate 70 at the Brewster exit about 1:55 p.m. Thursday, sending six people to the hospital.

The Kansas Highway Patrol reported that Mary Harden, 74, Meriden, was driving a Ford Trail-Lite west on the freeway.

The vehicle struck the bridge, the patrol said, and spun around across the median, jumping the guard rail on the eastbound side. It came to rest in its side in the eastbound lanes and on the south shoulder.

Riding with the driver were Joe Harden, 73; Hannah Waugh, 12; Jacob Waugh, 9; Joseph Waugh, 11; and Quinn Waugh, 7, all of Meriden.

The Hardens were wearing seat belts, but the four kids were sitting around a couch and a table in the back, the highway patrol said. The occupants were outside the vehicle, talking with emergency medical workers after the crash, but all six were taken to Citizens Medical Center for a checkup.

Staff at the hospital said Hannah Waugh was taken to the hospital, then treated and released. Traffic over the eastbound lanes was routed down the off-ramp at the exit, then back onto the highway, while workers cleared the wreck.



HEATHER ALWIN/Colby Free Press

Emergency responders inspected a RV that went across a median and ended up on its side against the guardrail of the bridge over the Brewster exit of Interstate 70 Thursday afternoon.

Staff at the hospital said Hannah Waugh was taken to the hospital, then treated and released. Traffic over the eastbound lanes was routed down the off-ramp at the exit, then back onto the highway, while workers cleared the wreck.

City audit shows funds in good shape

From "CITY," Page 1

...cacy Center and to Options: Domestic and Sexual Violence Services in 2014. McCreer said this was the same amount of money as the city has donated in the past, and is already in the budget.

• Heard from Jeremy Bridgeman with the Tree Board, who said a lot of trees have been planted this year by the pool and the walking path. He said the board plans to put more along the path and ballfields, and add irrigation in both places.

• Approved an annual agreement to split law enforcement dispatch and communications cost with the county.

• Approved an annual renewal of a special use permit for vacant lots at 165 and 175 E. Fourth St. The owner told the council he has not found anyone to rent the spaces, and City Manager Tyson McCreer told him

it would be easiest to renew the permit until he finds a renter.

• Approved a bid from Siemens for water-cleaning resin for \$162 per cubic foot to treat water at a Superfund waste cleanup sight on East Fourth Street run by the Environmental Protection Agency. McCreer said bids were opened up at 2 p.m. Tuesday and only one other company bid. Purell Light asked \$167 per cubic foot of solution. McCreer added that he hopes this is the last time they have to make such a purchase.

• Decided to move a planning session for the 2014 budget to July 6. It was July 7.

• Voted to approve a contract with Oppenheimer & Co. to be the financial adviser when the city issues up to \$90,000 worth of general obligation bonds to pay for a new water main leading to a Crop Production Services facility east of town, and approved the issuing of the bonds. The council voted

Federal education cuts affect schools

TOPEKA (AP) - Kansas school districts face the loss of about \$7.2 million this coming school year in federal funding for its high-poverty schools, according to the state Department of Education.

In a letter notifying school districts of the cuts Thursday, the department described the losses in Title I funding as "major." The department said 5 percent was cut because of the required federal budget cuts, and 0.2 of a percent because of a smaller allocation from Congress.

Title I funding pays for teaching staff and services at high-poverty schools, including extra math and reading teachers who help children who are struggling academically. The money also funds after-school programs.

The federal government distributes Congress' Title I allocation based on the poverty levels of districts' student bodies, and the poverty figures for Kansas hadn't grown as much as in most other states, *The Topeka Capital-Journal* reported (bit.ly/18nOamB).

Tammy Austin, executive director of administration for the

Topeka Unified School District, said cuts in Title I for her district were equivalent to 13 teachers' salaries and benefits.

"It's devastating," Austin said. "What's difficult is you're expecting something, and then it's not there, and something's got to give."

Austin said USD 501 had been planning for a potential loss of 8 percent of its Title I money but is now losing 9.25 percent. The district had expected to absorb cuts through staff attrition and hopes that will be possible. But she said the district hasn't had time to assess the situation.

The state education department is facing its own cuts in Title I funds and estimates it's losing about \$100,000 for administration related to Title I programs. The department also said the cuts will mean \$1.4 million less in funding used to help schools that have either low scores on state math and reading tests or wide achievement gaps in their student body.

Brenda Dietrich, superintendent of the Auburn-Washburn District in suburban Topeka and southwest Shawnee County, USD 437, said the impact of the cuts to her district wasn't clear yet.

For information or to schedule an individual appointment, calls bureau- Huelskamp's Dodge City office at (620) 225-0172.

Representative's staff to help solve problems

Lynn Ballinger, a member of Rep. Tim Huelskamp's Kansas staff, will be hold "office hours" from 10 to 11 a.m. Thursday in the Fireside Lounge of the Colby Community College Student Union.

Ballinger said she will listen to constituents' concerns, answer questions and serve as a resource for those struggling to navigate federal programs and bureaucratic red tape.



L. Ballinger

The congressman's office can help constituents who have problems or questions about federal agencies, including Social Security, Medicare, Veterans Administration, immigration and small business programs. People seeking assistance are encouraged to bring all relevant documents.

For information or to schedule an individual appointment, calls bureau- Huelskamp's Dodge City office at (620) 225-0172.

Thursday: High, 74; Low 47
Precip: Thursday None
Month: 0.80 inches
Year: 2.53 inches
Normal: 7.21 inches
(K-State Experiment Station)
Sunrise and Sunset
Saturday 6:23 a.m. 9:00 p.m.
Moon: waning, 100 percent
Sunday 6:22 a.m. 9:01 p.m.
Moon: waning, 96 percent
Monday 6:22 a.m. 9:02 p.m.
Moon: waning, 91 percent
Tuesday 6:21 a.m. 9:02 p.m.
Moon: waning, 82 percent
Wednesday 6:20 a.m. 9:03 p.m.
Moon: waning, 73 percent
(U.S. Naval Observatory)
Colby Water Use
Thursday 2,164,000 gal.
(Colby Public Works)

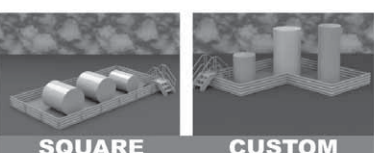
LOCAL TV Listings Sponsored by the COLBY FREE PRESS

Monday Evening May 27, 2013. Table with columns for time slots (7:00, 7:30, 8:00, 8:30, 9:00, 9:30, 10:00, 10:30, 11:00, 11:30) and rows for various channels including KAKE/ABC, KBSL/CBS, KSNK/NBC, KSAS/FOX, Cable Channels, and Premium Channels.

ON-FARM CONTAINMENT

The EPA requires containment if you have over 1,320 Gallons OF TOTAL FUEL STORAGE

Dura Life www.farmcontainment.com



Watch A Containment System Being Built At www.farmcontainment.com

785-754-3310

2520 South Castle Rock Rd • Quinter KS • www.quintermfg.com