

Personals

Single, white man, looking for love, and to be loved. Very hard worker and non-smoker, 30-60 years old. Oakley/Colby area 785-672-8382.

---3/27---4/8---

Services

Beckman Fencing LLC For all your fencing needs, specializing in barbed wire, pipe corrals, continuous fence, and chain link. Booking now for summer and fall. Contact Jared at 785-672-7607.

---4/4---5/1---

Spring Cleaning: Carpet Cleaning - 3 Room Special Only \$159.95! Dry Foam safe & Green Seal approved. Serving NWKS mileage free since 1987. A+ Cleaners 785-538-2526 or 785-443-5400 Johnene Cheney.

---4/1---5/31---

Wanted: Would like to do your house cleaning or office cleaning. Call 785-269-7283.

---3/29---4/4---

Do you have weeds every year? Want a great looking yard? Call JM Tree & Lawn Service to fill all of your needs this spring. We offer complete lawn maintenance, tree care and sprinkler system installs. Fully licensed and certified with the Kansas Department of Agriculture for lawn and tree pesticide/fertilizer applications. Call today to get a free quote. Our office number is 785-462-6908.

---3/11---TFN---

The City of Colby Housing Authority is seeking applications for the position of Executive Director. Applicant must have graduated from an accredited 4-year college or university with a major in Business Administration and/or have 5 years management experience, and/or public housing agency experience, knowledge of accounting, labor relations, urban development, project financing, and social work. Must have a valid Kansas Driver's License, driving record free of convictions for at least one year, and no felony convictions. The Colby Housing Authority is an Equal Opportunity Employer and provides a competitive salary and optional health and life insurance package, sick leave, vacation, and KPERS retirement benefits. Persons wishing to apply may pick up an application at the Colby Housing Authority office, 600 S. Mission Ridge Ave., Colby, Kansas 67701, or may phone 785-460-6763 to request one by mail. Completed application plus resume must be received at Colby Housing Authority by noon on Thursday, April 11, 2013.



Pepsi Beverages Company of Colby, KS has an **IMMEDIATE** opening for:

- **Full Time**
- **Field Service Tech**
- **Delivery Driver**
- **Warehouse Loader**

Please review the detailed job descriptions, requirements, and apply online TODAY at www.pepsibeveragesjobs.com

PBC is an Equal Opportunity Employer

Services

XXX Dirty XXX Guns? Professional Cleaning and Repair, call Scott at 785-269-7334.

---3/15---5/10---

Have a leaking roof and need it repaired? Look no further. Murray Roofing & Construction, LLC will give you a free estimate and roof inspection. We specialize in residential and commercial roofing systems. Call our office to schedule an inspection. 785-462-6908.

---3/11---TFN---

Garage Sales

Moving: 1160 W. Zelfer, next to Super 8 Motel, Colby - Saturday, 1 - 5 p.m. Many great items & car and motor home.

---4/5---

Kansas Classified Network

Adoption

A childless, young, successful woman seeks to adopt. Will be HANDS-ON Mom! Financial security. Expenses paid. Jodi. 1-800-718-5516

Kansas Classified Network

Adoption

ADOPTION: Educated, financially secure, affectionate married couple wants to adopt a baby into a nurturing, warm, and loving environment. Expenses paid. Cindy and Adam. 1-800-860-7074

For Sale

Happy Jack's Skin Balm: Stops scratching & gnawing. Promotes healing & hair growth on dogs & cats suffering from grass & flea allergies without steroids! Orscheln Farm & Home. www.happyjack-inc.com

Help Wanted

Heavy Equipment Operator Career! 3 Week Hands On Training School. Bulldozers, Backhoes, Excavators. National Certifications. Lifetime Job Placement Assistance. VA Benefits Eligible! 1-866-362-6497

Help Wanted

You got the drive, We have the Direction OTR Drivers APU Equipped Pre-Pass EZ-pass passenger policy. Newer equipment. 100% NO touch. 1-800-528-7825

Kansas Classified Network

Help Wanted/Truck Driver

Drivers: Inexperienced? Get on the Road to a Successful Career with CDL Training. Regional Training Locations. Train and WORK for Central Refrigerated (877) 369-7885 www.centraltruckdrivingjobs.com

Help Wanted/Truck Driver

Exp. Flatbed Drivers: Regional opportunities now open with plenty of freight & great pay! 800-277-0212 or primeinc.com

Help Wanted/Truck Driver

Transfer Drivers: Need 20 Contract Drivers, CDL A or B to relocate vehicles to and from various locations throughout US--No forced dispatch: 1-800-501-3783 www.mamotransportation.com

Misc.

AIRLINES CAREERS - Become an Aviation Maintenance Tech. FAA approved training. Financial aid if qualified - Housing available. Job placement assistance. Call Aviation Institute of Maintenance 888-248-7449.

Real Estate

FARM & RANCH REALTY, INC.

1420 W. 4TH. - P.O. BOX 947
COLBY, KS 67701
785-462-3904

DONALD L. HAZLETT, Broker
www.farmandranchrealty.com

DON HAZLETT

We invite you to talk to one of our Real Estate professionals:

- Don Hazlett, Broker • Cindy Hake, Office Manager • Naomi Ward • Melanie Voss • Steve Hazlett • Ron Evans
- Ed Currier • Neal Mann • Mike Bailey • Scotty Legere • James Hazlett • J.D. Hininger

RESCHEDULED FARM MACHINERY & EQUIPMENT SPRING CONSIGNMENT AUCTION

NEW DATE - SATURDAY, APRIL 6, 2013 @ 9:30 A.M., CDT

AUCTION LOCATION: FARM & RANCH REALTY AUCTION PAVILION
located ½ MILE WEST OF COLBY ON HIGHWAY 24.



TRACTORS, CRAWLER, FORKLIFT & SKIDSTEER:

• '02 NH TV140 Bi-directional w/grapple loader • JD 5425 W/542 self-leveling 6' bucket loader • 930 Case, 3pt, PTO, hyd on propane • JD 4020 w/Otter dozer • JD 4020 w/158 Grapple loader, PTO, 3 remotes, 95HP, syncro-range hyd • 4230, 3 pt, QR, 1,500 hrs on New OH•875 Versatile • JD 2510 tractor, 45HP • '36 "C" Case • MF 135 • JD 1010 crawler • White forklift • 94 Case 1838 "Uni-loader" skidsteer w/pallet forks & bucket

HEADERS: • '04 JD 936D draper header • '93 Shelborne 20' stripper header • 810 IHC 20' header w/Hesston head hunters

TRUCKS: • '05 Kenworth T800, 475 CAT, 10 spd • '96 Ford Aeromax, 3406E CAT, 15 spd, day cab • '86 Freightliner • '86 Chevy C-50, 4x4, 327 eng, 12' B&H, 41,035 mi • '78 Ford F700 tandem, 5x2, 22' B&H, RO tarp • '66 Chevy Truck, 327 eng, 16' B&H

PICKUPS & ATV: • '97 Ford F250, 5 spd, 4x4, Hydrabed • '95 Ford F250 3/4, 4x4, 5 spd, 460 gas, long bed, ext cab, fuel tanks • '93 Diesel 350 flatbed • '95 Ford F150 pickup • '04 Polaris 4x4 4-wheeler • '06 Schwinn Scooter, less than 100 miles

TRAILERS: • '12 Timpette 42' dbl hopper grain trl • '88 Merritt dbl hopper • '84 Guthrie 48' & '77 Wilson 46' cattle pots • '95 Diamond 6'x25' GN Cattle trl • '16' car trl • '92 Titan GN stock trl • '93 Bohn flatbed sprayer trl

FARM MACHINERY: • NH BR780 baler • UFT Grain cart • SF 27' disc • '12' dozer • JD 8350 disc drill • 5 shank ripper • 3) JD LZ 8'x12" grain drills • '16' Crustbuster • 2) NEW Bradford built flatbeds • '15' Rhino & 2) Bush hog mowers

• 2) SCAG "CHEETAH" HD RIDING MOWERS, NEW

HAY EQUIPMENT: • NH 358 grain mixer • NH 479 9' Swather • JD Side delivery hay rake • Tonutti GR350 hay rake • NH 499 Haybine swather • H&S Bi-fold rake

LIVESTOCK EQUIPMENT, SHOP EQUIPMENT, MISC ITEMS & MORE TOO NUMEROUS TO LIST!
FREE HAM & BEANS TO ALL REGISTER BIDDERS!!

AUCTION SCHEDULE

- 4/6/13 - RESCHEDULED Spring Consignment Auction
- 4/9/13 - 255 acres Rooks County cropland on N shore of Webster Lake, 2 tracts & combo
- 4/11/13 - 160 acres Sheridan County cropland 2E & ½ S of Seguin - SW/4 of 27-8-29
- 4/13/13 - CCC Endowment Benefit Auction
- 4/26/13 - 960 acres Logan County CRP & cropland, S of Oakley
- 4/30/13 - 142± acres Rooks County sub-irrigated cropland & creek bottom on S Fork of Solomon river
- 5/2/13 - 300± acres Trego County cropland & grass, NE of Wakeeney
- 5/7/13 - 800± acres Lane County cropland, grass & CRP offered in 2 individual tracts
- 5/14/13 - 2,225 acres Greeley County, KS cropland offered in tracts & combos

AG LAND FOR SALE

- SHERMAN** - 120 acres cropland, NW of Goodland, SE/4NE/4 & W/2NE/4 of 2-8-40
- GRANT** - 232± acres cropland & CRP in E/2 of 34-30-36
- NORTON** - 160 ac cropland, 4 mi N of Densmore, W/2W/2 of 8-4-21
- NESS** - 880 ac cropland & grass near Lane/Ness Co line on Hwy 96
- WALLACE** - 480 ac cropland, N of Sharon Springs - N/2 of 32-12-38 & NW/4 of 33-12-38
- GRAY** - 160 ac sprinkler irr cropland, 5 mi North of Montezuma, NE/4 of 26-27-29

****CHECK OUR WEBSITE FOR ADDITIONAL LISTINGS & VIRTUAL TOURS!****



JUST LISTED

LOCATION & SPACE
1055 VILLA VISTA
Price: \$325,000
Melanie Voss, Listing Agent



Melanie Voss
Residential Agent

For all your residential needs - CALL

MELANIE at
785-443-0611 or
NAOMI at
785-672-8618



Naomi Ward
Residential Agent

"When you list with Farm & Ranch, it's as good as SOLD!"

Real Estate

Kansas Classified Network

Misc.

ATTEND COLLEGE ONLINE from Home. *Medical, *Business, *Criminal Justice, *Hospitality. Job placement assistance. Computer and Financial Aid if qualified. SCHEV authorized. Call 888-220-3977 www.CenturaOnline.com

Kansas Classified Network

Sporting Goods

WORLD'S LARGEST GUNSHOW - April 6 & 7 - Tulsa, OK Fairgrounds. Saturday 8-6, Sunday 8-4. WANEMACHER PRODUCTIONS. Free appraisals. Bring your guns! www.tulsaarmsshows.com



The KEY to easy home ownership!

A mortgage loan from Farmers & Merchants Bank!



Jacquie Golemboski
Mortgage Loan Officer
240 W 4th St
Colby KS 67701
NMLS# 643818

Call Jacquie Today!
Rates are low!
785-460-3321



Farmers & Merchants Bank of Colby Equal Housing Lender Member FDIC

Real Estate

Stock Realty and Auction Company Wants to be Your Real Estate Company. Molly J. Oliver and Kevin M. Barnett Want to Go to Work for YOU!



Molly J. Oliver - 462-5203
Kevin Barnett - 443-1722



Newer look inside and outside.
A must to see. 222 Illinois \$42,500



Fantastic Home with full bsmt. and a 4-car garage. 318 Hastings \$87,000



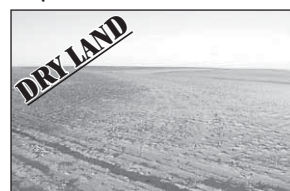
Attractive Traditional Charming.
Come View! 160 N. School \$79,500



Why Rent? Own this attractive move-in ready 3 BR. 430 S. Mission \$69,900



Lease or Purchase this beautiful office bldg. 140 W. 4th Call Molly



Call Kevin on this 160 +/- Acres of great farmland. Kevin 443-1722

Stock Realty & Auction Co. www.stockra.com
390 N. Franklin Ste. 100 Colby, KS 67701 (785) 460-7653

Real Estate

160 ACRES CROPLAND LAND AUCTION
SHERIDAN COUNTY, KS
Thur., April 11, 2013 @10:30 AM, CDT

AUCTION LOCATION:
BOWEN SCOUT HOUSE
HOXIE, KANSAS

SELLER:
Mildred B. Thummel Trust



SW/4 of 27-8-29 -- 157.0 ac cropland

- Immediate possession
- All of the Seller's interest in minerals go to the Buyer

INTERNET BIDDING AVAILABLE!

CALL FOR A BROCHURE OR VISIT
www.farmandranchrealty.com

FARM & RANCH REALTY, INC.

RON EVANS, Listing Agent - 785-443-2416
1420 W. 4TH • COLBY, KS 67701
Call Toll Free: 1-800-247-7863
DONALD L. HAZLETT
BROKER/AUCTIONEER
"When you list with Farm & Ranch, it's as good as SOLD!"

HomeLand REALTY AUCTION

(785) 462-8255
www.HomeLandRE.com

Pat Sloan	(785) 443-3261
Marilyn Meyer	(785) 462-2703
Toni Lindberg	(785) 443-4032
Rock L. Bedore	(785) 443-1653
Tom Harrison	(785) 443-0136
Jerry Wycoff	(785) 672-0429
Mike Scott	(785) 675-8556

1055 S. Range - PO Box 508
Colby, KS

Let Our Agents Work for You!

NEW LISTING

1954 Cty Road 9, Levant
3 BR/2 Bath
Call Marilyn today!

PLENTY OF SPACE

320 Arrowhead
6 BR/2.5 Bath
Call Marilyn or Toni today!

135 E. Walnut (Lot)	CONTRACT	\$8,000
Arrowhead Lot - EXCLUSIVE	CONTRACT	
224 Price, Oakley	CONTRACT	
1345 W. 4th	CONTRACT	\$59,500
621 Cornell, Oakley	CONTRACT	
675 N. Sterling	CONTRACT	\$64,900
419 Colby Ave., Oakley	CONTRACT	\$82,500
404 Miles, Winona	CONTRACT	\$89,500
330 E. Ash	CONTRACT	\$89,900
209 S. Waldo, Oberlin	CONTRACT	\$92,000
1954 County Road 9	CONTRACT	\$137,500
625 Wink, Oakley	CONTRACT	\$159,500
940 E. 9th - EXCLUSIVE	CONTRACT	\$198,500
320 Arrowhead - EXCLUSIVE	CONTRACT	\$210,000
1090 Wheatridge Road	CONTRACT	
2368 K 25 - Colby, KS	CONTRACT	

Rory Bedore, Owner & Agents

735 E. College Drive

Well established Restaurant/Bar with plenty of parking. Unlimited possibilities. Call Jerry today!

111 W. 3rd - Oakley, KS

10,000+ sq. ft. building on a corner lot. It has new exterior paint, new roof and new front sidewalk. Call Rock today!

COMMERCIAL LISTINGS

63 Acre parcel or 2-6 acre lots located along I-70 frontage, Colby, KS. \$17,000/acre. Call Marilyn!

464 Highway 83, Oakley, KS Colonial Steak House. Some owner financing available. \$329,000. Call Tom!

Commercial lot 10 acres North of I-70 on Willow Avenue East of Whistle Stop. Give Tom a call today!

AG LAND LISTINGS

80 Acres Trego Cty. Cropland & Grass located 4 miles North of Collyer, KS **UNDER CONTRACT**