

Deaths

Nancy Florence Brown

Nancy Florence (Spring) Brown, 69, Colby, died Thursday, March 14, 2013, at Citizens Medical Center.

She was born Feb. 2, 1944, in Goodland, the daughter of Lloyd and Nancy Sporing. She attended Goodland schools through the eighth grade.

She had three sons by her first husband Phil Butler, whom she later divorced.

In 1965, she married Benny Brown.

She worked as a waitress and a retail clerk at several stores.

Preceding her in death were her parents, her husband Benny Brown, a son, Conrad Brown, and a sister, Donna Bergquest.

Survivors include two sons, Brian (Tonjau) Brown, Colby, and

Troy (Jodie) Brown, Goodland; a daughter, Terry (Bobbi) Downs, Willard, Mo.; two brothers, Lloyd (Sue) Sporing, Superior, Neb., and Ronnie Dean (Linda) Sporing, Haxtun, Colo.; two sisters, Letha (Art) Kibel, Cañon City, Colo., and Mary Ann Rupp, Clearfield, Utah; eight grandchildren; and eight great-grandchildren.

Memorial services will be at 11 a.m. Saturday, March 23, 2013, at the Kersenbrock Funeral Chapel in Colby, with Father Don Martin officiating. The family will have a private inurnment later.

No visitation.

The family suggests memorials in her name in care of the funeral chapel, 745 S. Country Club Dr., Colby, Kan., 67701.

S. Ron B. Williams

S. Ron B. Williams, 75, Atwood, died Monday, March 18, 2013, at his home.

He was born May 12, 1937, in Oxford, Neb.

Services will be at 10 a.m. Monday, March 25, 2013, at the Sacred Heart Catholic Church in Atwood, with Father Nick Parker and Father Dana Clark officiating and burial in the Mount Calvary Cemetery in Atwood.



Ron Williams

Visitation will be from 1 to 4 p.m. Sunday at Williams Funeral Home in Atwood. Vigil and Knights of Columbus Rosary will be at 7 p.m. Sunday at the church.

The family suggests memorials to the Knights of Columbus Endowment Fund in care of the funeral home, 109 N. Second St., Atwood, Kan., 67730.

Colby Rotary Club

Colby Rotary Club met Tuesday at Colby Community College with 31 members and guests Leanna Larmer and Karen Larmer.

President Melany Wilks gave an overview of how Rotary projects and programs are funded on the local, district and international level.

Tom Peyton gave a presentation on scientific facts found in the Bible. He highlighted 25 facts on the earth's rotation, space, the universe, wind, ocean currents and springs of the sea. He noted

many references can be found in the Book of Job, which may be the oldest book in the Bible.

Mike Tubbs won Roto-Lotto. The club meets Tuesdays in Room 106 of the Student Union.

Corrections

The Colby Free Press wants to maintain an accurate record of our town. Please report any error or lack of clarity in a news story to us at 462-3963.

Sharpen up on gardening, grilling at Better Home and Living Show

Spring is here, according to the calendar anyway. Spring means the start of the two G's – gardening and grilling.

K-State Research and Extension has teamed up with Rocking M Radio to provide programs open to the public on Saturday during the Colby Better Home and Living Show. All Extension programs will be held in Activity Room 2, upstairs in the Colby Community Building. Visit the home show and time it right to be able to attend one or more of these sessions.

The Thomas County Master Gardeners have lined up the first four sessions.

With the organic and natural health movement, gardening has grown in popularity. Tomatoes are the most popular home garden vegetable. They are easy to grow and thrive under a variety of growing conditions.

Whether you are new to growing tomatoes or not, you won't want to miss the 10 a.m. session "Can You Grow Tomatoes?" by Julie Niehage, Golden Prairie Extension Agent. Learn general facts about tomato plants: when, where and how to plant tomatoes. What to look for when selecting tomato plants, fertilizing, watering, staking, mulching and common tomato problems from foliage disease to insects as well as new variety trends.

At 11 a.m. will be "Tree Establishment and Care" by Northwest District Extension Forester Jim Strine, a well-known and respected expert on trees, a precious commodity in western Kansas. Learn what to look for when



Diann Gerstner

• Knowledge for Life

selecting a tree, how to properly plant a tree, how to mulch and stake if necessary and then watering and caring for the tree. Proper watering throughout the first growing season often means the difference between success and failure.

Note: In an effort to get new trees and shrubs off to a good start, it is easy to overreact and water too often which can cause a different set of problems. When soil stays wet for an extended time, root damage can occur due to oxygen depletion. As a result, it can cause "wet wilt," which looks similar to wilt caused by dryness but the leaves wilt and do not recover, even if water is added. Strine will cover this and more.

"Top 40 Annuals and Perennials" will be the topic at noon. Niehage will talk about the "Prairie Star" annual flowers and the "Prairie Bloom" perennial flowers. These collections of annual and perennial flowers have been tested by K-State and determined to be the varieties best adapted to the challenging prairie climate.

The lists contain flower varieties that have exhibited superior performances for two years or more in Kansas bedding-plant research trials. Prairie Star and Bloom flowers are the best of the best – flowers that grow and bloom abundantly with minimal care. Planting varieties in the "Prairie" collection is the best way to assure the eye-catching appearance gardeners hope for. Come learn why every landscape should have flowers, why you would want to plant flowers and which flowers to plant.

At 1 p.m., Strine will repeat his presentation on tree establishment and care.

At 5 p.m., we switch to the other "G," grilling, with "Beef Done Right" by Melinda Daily and Marty Fear, Sunflower District Extension agents. Fear will help you understand the cuts of meat and how to get the best value for the price. Then Daily will share grilling secrets to produce moist, juicy, flavorful lean beef. She will be sharing recipes and you won't want to miss trying the samples.

The weather is predicted to be cold with a chance of snow. You won't be working outside, so you might as well attend the Home Show and Extension sessions to get ideas and knowledge so you are ready when the warm weather finally decides to arrive.

Diann Gerstner is the family and consumer sciences agent for the Thomas County Extension office.

March honors Red Cross work

March is the 70th anniversary of Red Cross Month, and the American Red Cross is recognizing the everyday heroes who contribute to their communities.

"Please remember those who help all of us here in western Kansas..." said Megan Carver, service center manager of the Western Kansas Red Cross. "We want to thank our heroes ... our volunteers, blood donors, students and financial supporters who help those in need."

The Red Cross responds to nearly 70,000 disasters each year, providing food, shelter and sup-

port. This past year, the Western Kansas Red Cross responded to 31 local emergencies, assisted 92 military families and trained more than 3,000 people in lifesaving skills. Nine volunteers served on national disasters this past year.

"Red Cross Month is a great time for people to become part of the Red Cross and there are many different ways to do it," Carver said. "They can ... become a Red Cross volunteer, give blood or take a Red Cross class..."

The Red Cross is a United Way agency. It is not a governmental organization, so it relies on dona-

tions to do its work. An average of 91 cents of every dollar given to the Red Cross is invested in helping people in need.

Markets

Quotes as of close of previous business day

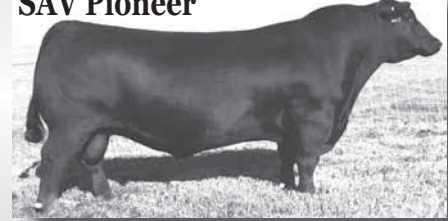
Hi-Plains Co-op	
Wheat (bushel)	\$7.11
Corn (bushel)	\$7.36
Milo (hundredweight)	\$12.55
Soybeans (bushel)	\$13.16

L Bar L Angus

15th Annual Prime Cut on the Hoof Sale
Performance-Tested Registered Angus Bulls

Thursday, March 28, 2013
Imperial Auction Market • Imperial, NE • 12:30 MDT

SAV Pioneer



Featured Sires Include:
• Sitz Dash
• Benfield Substance
• SAV 707 Rito 9969
• SAV Pioneer
• SAV Predominant
• Connealy Thunder

Selling:
10 Coming Two-year-old Bulls
60 Yearling Bulls
50 Yearling Heifers



Write or Call for a Sale Book!
Todd & Donalyn Hasenauer
37703 S. Hwy. 25 • Wallace, NE 69169
308-387-4454 • Cell: 308-530-3568
lbarlangus@gmail.com • lbarlangus.com
To View Sale Book Online: www.lbarlangus.com

ALL YOU CAN EAT

& WAY MORE THAN YOU CAN CATCH
All you can eat Friday Fish Fry

Enjoy all the hand battered, golden fried cod you can eat. Served with seasoned french fries, tangy cole slaw & delicious homemade tartar sauce.

EVERY FRIDAY FROM 5 - 9 P.M.

Village Inn • 2215 S. Range, Colby, KS • 785-462-6683

Happy Birthday Oscar!

Celebrate with **Oscar** on his 93rd Birthday on March 25, 2013. with a card or visit!

Please send cards to or visit him at:
Oscar Jones
Fairview Estates Retirement Community
1630 Sewell Ave., Apt. D-2
Colby, KS 67701

ROBBEN

Monuments, Markers, Vases, Bronze Plaques, Cremation Urns.

Order now for Memorial Day.

Robben Memorial Co.

Please Call
785-460-3124
785-443-3630

COLBY FREE PRESS CLASSIFIEDS

Find what you're looking for.

155 W. Fifth Colby KS
785-462-3963

Strutt Insurance Services, Inc.

Invites you to our OPEN HOUSE at our new location 1675 W. 4th • Colby

BUSINESS AFTER FIVE
Thursday, March 21 Starting at 5 p.m.

Wednesday, March 20 8 a.m. - 5 p.m.
Thursday, March 21 8 a.m. - 5 p.m.

STRUTT INSURANCE SERVICES, INC.
(Formerly F&M Insurance Store & Cersovsky Insurance)
1675 W. 4th, Colby • 785-462-6779