

Demo derby to complete county fair

By R.B. Headley

Colby Free Press
rbheadley@nwkansas.com

The Thomas County Fair Demolition Derby crashes back into its Saturday primetime position, which should add some spark.

Pits open at 4 p.m. on Saturday, Aug. 3, with 6 p.m. being the derby start time.

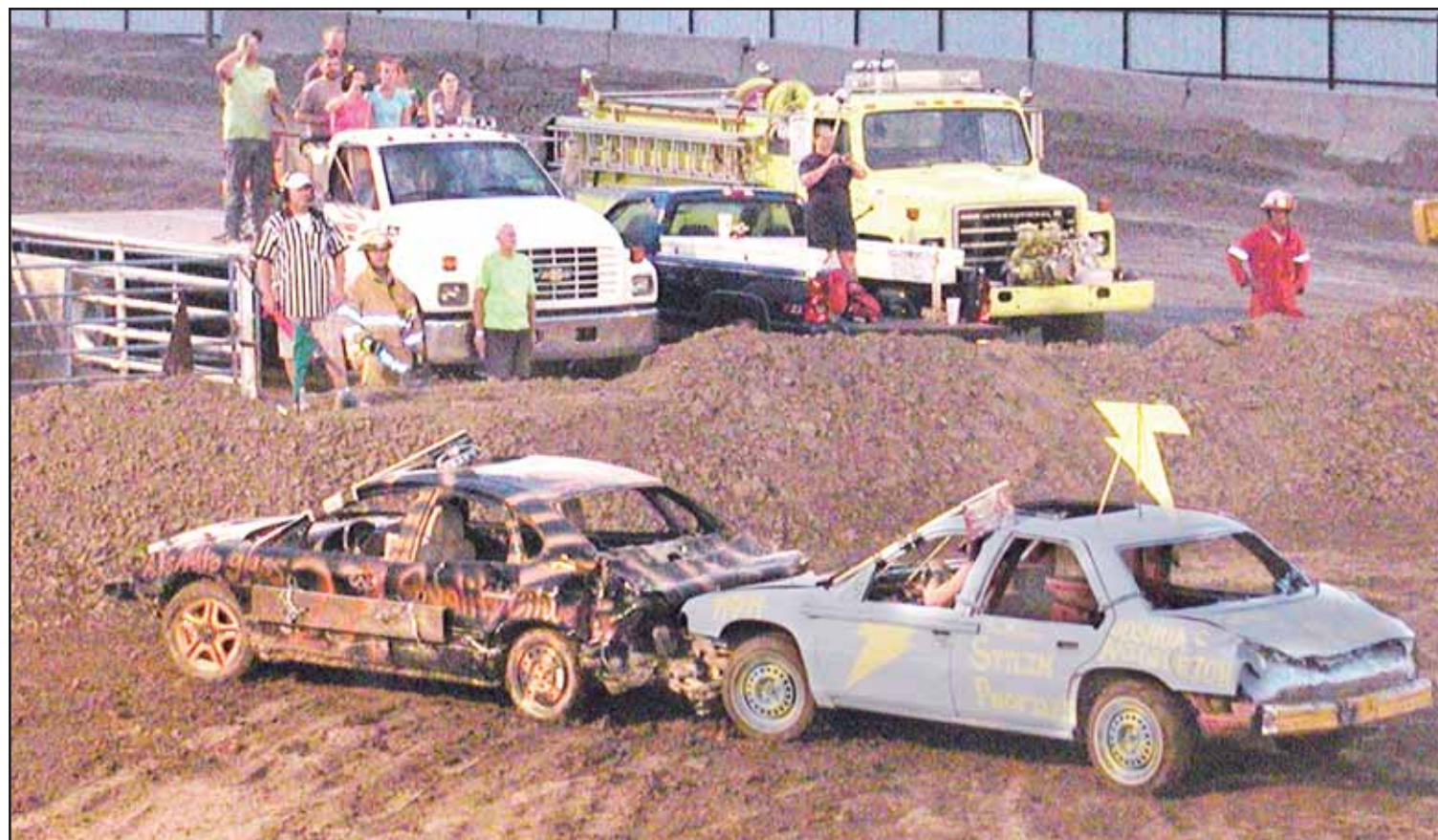
“Hopefully, Saturday night will bring in more people and cars,” fair board Secretary Audrey Hines observed. “It’s always been a well-attended event as far as people in the stands. We’d like to see some more cars participate and we think Saturday will give more drivers a chance to get here.”

It also pays off nicely to dent your car on a Saturday night. The full-size class purse features \$1,200 for first place and \$800 to whoever takes second.

Prizes continue for third (\$600), fourth (\$400), fifth (\$300) and sixth (\$200) places.

“They’ll be a lot of the same big cars that people are used to seeing in the derby,” Hines confirmed.

The compact class features a \$600 champi-



SAM DIETER/Colby Free Press

The Thomas County Fair Demolition Derby always draws plenty of attention and should again as it moves into a Saturday primetime position to complete this year’s festivities.

onship reward and \$300 to second.

Compacts will cash in for earning third (\$200), fourth (\$150), fifth (\$125) and sixth (\$100) places.

Not forgotten will be the Figure 8 race, where both full size and compacts win \$250.

Drivers do pay a \$45 entry fee per car, with pit passes costing \$20 each.

All drivers must furnish their own cars.

They also must be at least 18 years of age, or 16 if they have a notarized permit from parent or guardian.

Your Community Bank



MEMBER
FDIC



www.sunflowerbank.com

500 N. Franklin • Colby • 785-462-3313

Spend time at the fair this year and enjoy good food, lots of fun and entertainment!



AMERICAN IMPLEMENT JOHN DEERE

Your Northwest Kansas John Deere dealer
1-800-532-6529 • 462-3391

Good luck to all the 4-Hers!



Western Hospitality



1055 S. Range
Colby, KS
785-462-8255

www.HomeLandRE.com

1112 Main Street
Goodland, KS
785-899-3060

- Residential
- Commercial
- Farms & Ranches
- Market Analysis
- Property Management
- Land Auctions
- Machinery Auctions

Van's Body & Frame

"In Business Since 1946"



Full Service Body Shop

- Dent Removal
- Paintless Dent Removal
- Collision Repair & Refinishing
- Restoration
- Interior/Exterior Detailing
- Windshield Installation



Call or Stop By For A **FREE ESTIMATE**
Monday-Friday • 8:00 a.m. - 6:00 p.m.
730 S. Range Ave • Colby • **785-460-3841**