

KARLY KRISS



I plan to attend Colby Community College and play basketball. Then attend Kansas State and row for the rowing team and study to become a pharmacist.

Parents: Kevin and Cindi Kriss

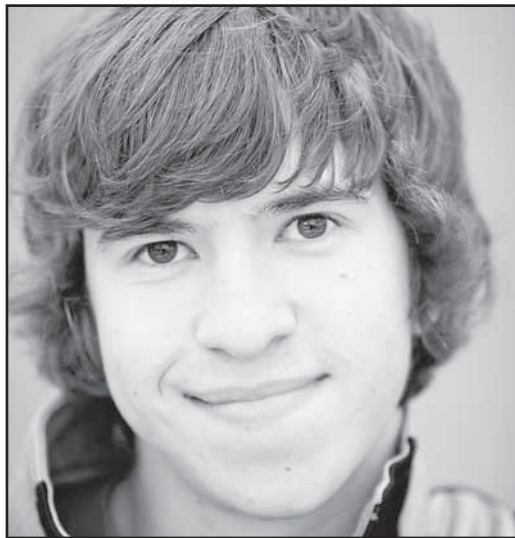
Strutt Insurance Services, Inc.



(Formerly F&M Insurance Store & Cersovsky Insurance)

1675 W. 4th, Colby • 785-462-6779

ERIC LOWE



I plan to attend Colby Community College.
Parents: Dave and Donna Lowe



Hajoca

625 S. Country Club
785-462-6731

CHANTEE LUNA



I plan to attend Colby Community College.
Parents: Patricia Luna
Robert Buttram



2148 County Road Q
PO Box 468
COLBY, KS 67701

JAY MATZEK



I plan to attend Colby Community College.
Parents: Steve and Marcia Matzek



2227 S. Range
462-6565

CAMERON MCLAUGHLIN



I plan to attend Kansas State University.
Parents: Jim and Rhonda McLaughlin

Strutt Insurance Services, Inc.



(Formerly F&M Insurance Store & Cersovsky Insurance)

1675 W. 4th, Colby • 785-462-6779



100 E. College
Colby, KS
785-460-7511

DYLAN MCLEMORE



I plan to study criminal justice at Colby Community College, then get my bachelor's degree at a university or go to the police academy.

Parents: Larry and Sandy McLemore



(785) 462-3373 (800) 747-3394

S & W SUPPLY

185 W. Fifth St.
Colby, KS 67701



905 E. 4th St.
Colby, KS
785-462-7525