

CHRISTIAN COULTER



I plan to attend Northwest Kansas Technical College and major in auto mechanics.

Parents: Tim and Laura Coulter
Ben Hopper and the late Rusti Hopper

CORNERSTONE
Ag
2148 County Road Q
PO Box 468
COLBY, KS 67701

STATE FARM
INSURANCE
905 E. 4th St.
Colby, KS
785-462-7525

100 E. College
Colby, KS
CMCI 785-460-7511

MACKENZIE CURRY



I plan to attend the University of Nebraska in Kearney, Nebraska.
Parents: Shawn and Mindy Curry

T.O. Haas Tire
RIGHT TIRE • RIGHT PRICE • RIGHT NOW
910 South Range • Colby
462-3957

STATE FARM
INSURANCE
905 E. 4th St.
Colby, KS
785-462-7525

MATTHEW DICKMAN

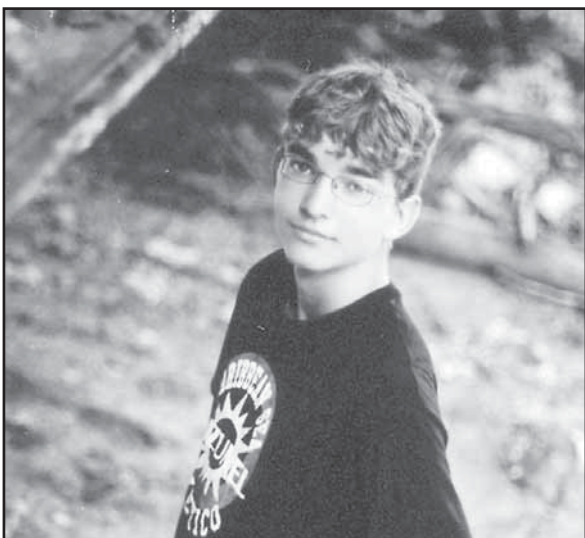


I plan to attend Kansas State University.
Parents: Richard and Becky Dickman

Tubbs & Sons Ford Sales
Colby, KS

810 S. Range • Colby, KS
785-460-6746

JOHN FABER



I plan to attend Kansas University and major in physics.
Parents: Joshua and Ronda Faber

LEROY'S PRINTING
EST. 1964
& PUBLISHING, INC.
560 N. Franklin
Avenue
Colby
785-460-2211

STATE FARM
INSURANCE
905 E. 4th St.
Colby, KS
785-462-7525

KAITLYN FLANAGIN



I plan to attend Fort Hays State University and major in interior design.

Parents: Jay and Luetta Flanagan

100 E. College
Colby, KS
CMCI 785-460-7511

SUNFLOWER BANK
500 N. Franklin
785-462-3313

Williams Consulting, Chtd.
A Certified Public Accounting Practice
Quintin C. Flanagan, CPA
465 N. Franklin Ave. • Colby
785-460-0745

BRANDON GAEDE



I plan go into the law enforcement field.
Parents: Eric and Angie Gaede
and Dena Loppelmann

COLBY AUTOMOTIVE
CARQUEST
AUTO PARTS
590 N. Franklin
Colby, KS
785-462-3349

STATE FARM
INSURANCE
905 E. 4th St.
Colby, KS
785-462-7525