

ANDREW URBAN



I plan to attend a culinary school.
Parents: Cheryl Barnett and Ricky Urban

OCTAVIO VALDEZ



I plan to go to college, leave Colby, become an independent filmmaker/artist, buy a house and take over the work.
Parents: Wendy Barraza

JENESSA WILLIAMS



I plan to attend Colby Community College.
Parents: Scott and Donnie Williams

FARM & RANCH REALTY, INC.
1420 W. 4TH
COLBY, KS 67701
785-462-3904
DONALD L. HAZLETT,
BROKER

**FARM CREDIT
OF WESTERN KANSAS**
1055 S. Range Ave.
Colby, KS 67701
785-462-6714

**Comfort
INN**
BY CHOICE HOTELS

2225 S. Range Ave.
Colby, KS
785-462-3833
Farmers & Merchants
Bank of Colby
*Together...
Making a
Difference.*
Member
FDIC
240 W. 4th
460-3321

**KANSAS
Quick
Lube** 1927 S. Range
Colby, KS
460-LUBE

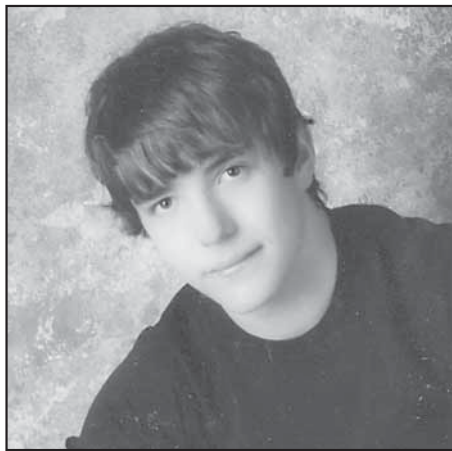
**KANSAS
COUNTRY STORE**
2260 Southwind Ave., Colby
460-6080

ZANE WINGER



I plan to attend Garden City Community College to play football and major in business administration.
Parents: Mark and Tonya Winger

MICHAEL QUADE WOOFER



I plan to attend Colby Community College and pursue a degree in the medical field, wrestle and then transfer to a 4 year university.
Parents: Mike and Jennifer Woofter

KAID WRIGHT



I am undecided at this time.
Parents: Jeff and Melanie Barton
Duane Wright

TYRELL YARBROUGH



I plan to become a video game designer and a novel writer.
Parents: Christie Yarbrough

**FARM CREDIT
OF WESTERN KANSAS**
1055 S. Range Ave.
Colby, KS 67701
785-462-6714

OASIS 700 Horton Ave
785-460-0044
TRAVEL CENTER
Peoples State Bank

100 S. Range Ave • Colby, KS
785-462-2224

STATE FARM
Auto
Life
Fire
INSURANCE
905 E. 4th St.
Colby, KS
785-462-7525

The Ride
100.3 FM
1065 S. Range • 462-3305