



Area stores collect toys, cash for tots

By Christina Beringer
Colby Free Press
colby.society@nwkansas.com

Drop-off sites have been established in Colby and Rexford for donation to Toys for Tots, a long-time program of the U.S. Marine Corps Reserve that collects toys for kids who otherwise might not have much of a Christmas.

Federated Auto Parts stores have teamed up with the Graham County Toys for Tots and the Marine Toys for Tots Foundation to boost the program. Thirty-eight stores in Kansas and Colorado will collect toys and cash donations, including S&W Supply at 185 W. Fifth St. in Colby and Dave's Auto Supply in Rexford.

People can drop off contributions at either location until Wednesday, Dec. 5.

"Unwrap the magic of giving

and help us make some child's holiday a little brighter," said Lance Pittman, Federated sales and marketing director.

"Donations must be new toys in their original packaging, but not gift wrapped. The toys should be something a person would want to give a child in their own family or for children up to 12."

"We are happy to participate in the program," said S&W Supply Manager Mark Schwarz. "This is the first time we've been involved, and it is definitely a needed program. There are kids out there who may not otherwise get anything for Christmas if it weren't for Toys for Tots."

For information, visit go to the Facebook page "Toys for Tots - Federated Auto Parts," or call Schwarz at (785) 462-3373 or Williams in Rexford at (785) 687-3235.

Museum hopes to fix up old barn

By Christina Beringer
Colby Free Press
colby.society@nwkansas.com

Director Sue Taylor is asking for donations as the Prairie Museum of Art and History plans restoration and improvements for the huge old Cooper Barn.

To kick start the Barn Aid campaign, Taylor said, the family of Helen Frahm has offered a \$20,000 matching gift to challenge and encourage others to contribute.

The museum needs \$47,000 to make the barn more attractive to potential clients looking for a place to have a wedding, anniversary or meeting.

"Helen Frahm was so supportive of the community and especially the museum," Taylor said. "She was actively involved at the museum as a board member and editor for the *Prairie Winds* newsletter, and her family and estate have been equally supportive of our work and efforts."

"This gift is the impetus to get the project going. And, what a wonderful way to start off a fundraising campaign; we are already halfway to our goal. People can know that no matter how much they give, it is automatically doubled."

The work plan includes hooking the museum and barn up to the city sewer system, electrical and plumbing upgrades, a chair lift for handicapped accessibility to the loft and tables and seating.

"When the museum was built in 1987," said Taylor, "connecting to city sewer was not feasible, so a septic system was installed for the museum.

"At this time, to add restrooms to the barn, (it) must be connected



CHRIS GRIFFIN
Prairie Museum of Art and History Maintenance technician Larry Dilts has begun installing upgraded exhibit lights and other items in the old Cooper Barn.

to the city sewer at an estimated
See "BARN," Page 2

Women gathering food for needy kids

When the Women of K-State decided last year that they wanted to hold a fund raiser for the Genesis-Thomas County food bank, they thought it would be a nice thing to do for a good cause here at home.

Then they looked up some of the statistics for Thomas County, said Vicki Brown, and that ener-

gized them to do their part to help those in need. Last year, Genesis served 696 families who needed of food, she said, and the agency already had helped 772 families through September this year.

The women decided they would like to do something more, and Wynn Duffey, president of Genesis, suggested supporting the Food

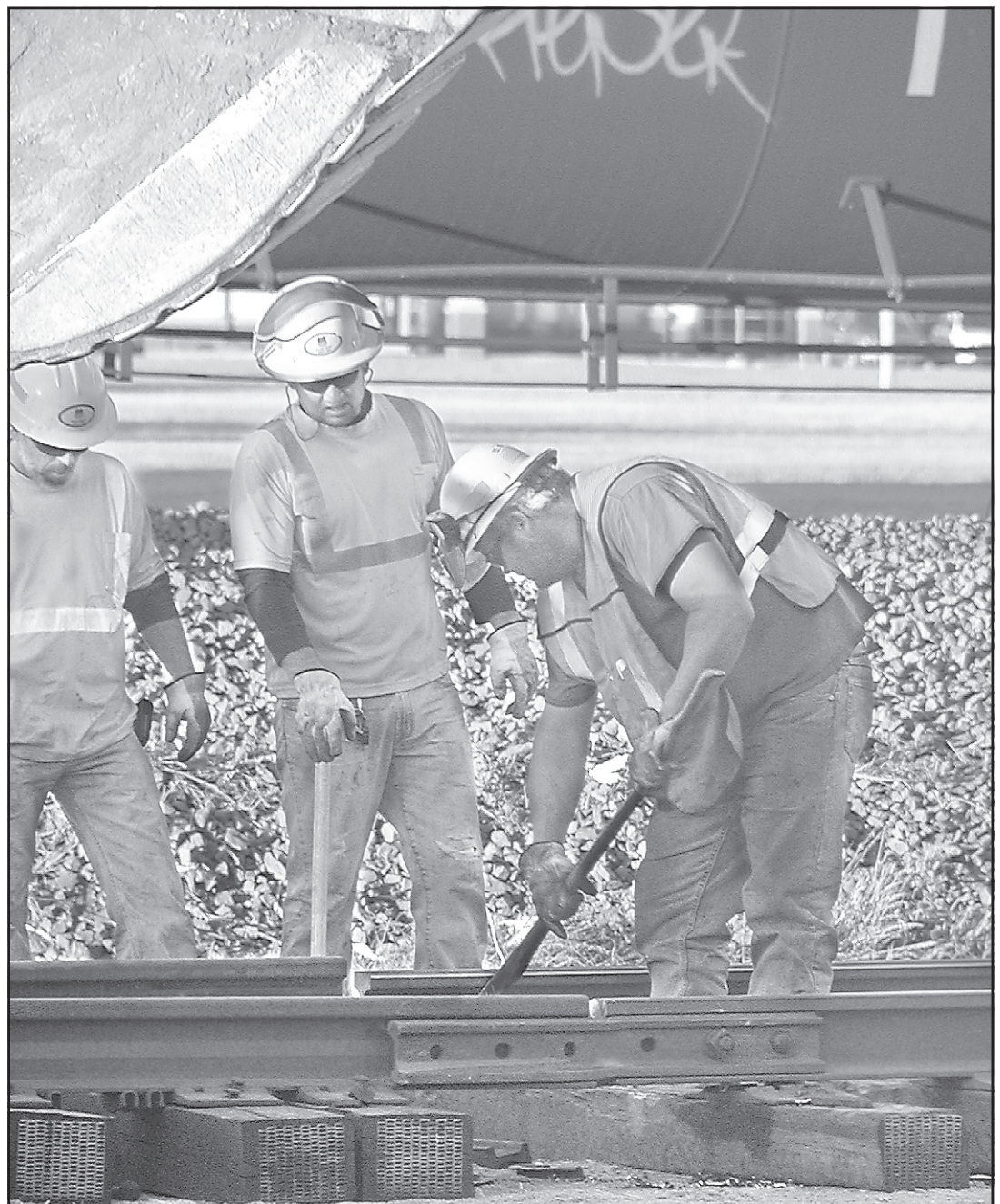
See "BACKPACK," Page 2

Big Bend



It comes down to brawn

Union Pacific railroad line, railroad employees rerouted the track around a collapsed elevator in Oakley by pulling it to one side with a back hoe (above), then connecting the two ends with pre-built track panels. After the original track had been pulled away from the area, workers bolted in additional sections of rail (below) to make a detour around the pile of spilled corn.



STEVE HAYNES/Colby Free Press

Workers move track around elevator

By Sam Dieter
Colby Free Press
sdieter@nwkansas.com

Trains are running through Oakley after track crews finished a bypass, or shoo-fly, track around a grain elevator that collapsed Tuesday afternoon.

Law enforcement officers and emergency workers, who stood by and kept traffic away from the scene for most of a day and a half went home to get some sleep. Railroad workers and contractor crews called to move the derailed cars did the same.

The two bins on the southeast side of the Frontier Ag grain elevator in Oakley collapsed at about 2:30 p.m. Tuesday, spill-



SAM DIETER/Colby Free Press

Several empty tank cars which had carried alcohol were tipped on their side by corn spilling out of a collapsed elevator Tuesday in Oakley. By the next morning, three of them had been dragged to one side of the tracks with their wheels.

ing enough corn onto an adjacent Union Pacific Railroad track to knock over nine rail cars and block the track.

Davis said that a length of track, called a "shoo fly," built around the site of the spill Wednesday had the railroad open. After the derailed cars were dragged out of the way, workers cut the rails on either side of the spill and moved the track to form a curve at either end. Pre-built "panel track" brought in by work trains connected the two ends, the crews spread crushed-rock ballast to hold and cushion the new track and aligned the rails. The bypass is only temporary, however.

"As soon as it's safe to get the main track back in service, that will be done," said Union Pa-

See "RAILROAD," Page 2

