

## Senior Progress Center

Come enjoy time with the Young at Heart Singers Friday at the Senior Progress Center.

Activities for the week: **Monday:** 10:30 a.m. shuffle board. **Tuesday:** 10 a.m. exercise; 10:30 a.m. cribbage. **Wednesday:** cinnamon rolls and hot drinks. **Thursday:** 10 a.m. exercise; 10:30 a.m. domino game. **Friday:** 10 a.m. exercise; 10:30 Young at Heart singers.

Menus for the week: **Monday:** hamburger patty, hash brown casserole, cook's choice vegetable, bun, peaches. **Tuesday:** taco salad, tropical fruit, chips, bread pudding. **Wednesday:** turkey a la king, mixed vegetables, gelatin with mandarin oranges and pineapple, biscuits or rice cookie. **Thursday:** meat loaf, mashed potatoes, gravy, rosy pears, birthday cake. **Friday:** smokies, macaroni and cheese, California blend veg-

etables, colored fluff salad.

The Thomas County Nutrition Center invites anyone 60 and older and guests to lunch Monday through Friday at the senior center. Home delivery is available, as is pick-up service. A contribution of \$3 per meal is suggested for seniors, \$5.25 for others. For anyone under 60, home delivery is \$5.75. Make reservations at (785) 460-2901 by noon the day before.

## Red Barn

Activities for the week: Daylight Saving Time begins. **Monday:** 1:45 p.m. blood pressure clinic; 2 p.m. Barnswallows. **Wednesday:** 1 p.m. ladies' Bible study. **Thursday:** 2 p.m. "Come On Down," 6:30 p.m. Spuds 'n Splits. **Friday:** 9:30 a.m. Koffee Klatch, 10:30 a.m. board meeting; 2:30 p.m. "Stitch and Chatter."

## Student News

### Colby Public Schools

Activities: **Monday:** 7 p.m. school board meeting, administration building. **Tuesday:** 7 p.m. first grade musical, grade school auditorium. **Thursday:** end of quarter. **Friday:** no school, staff work day.

Menus: **Monday:** breakfast: breakfast pizza, grape juice; lunch: Salisbury steak, mashed potatoes, brown gravy, roll, mandarin oranges, peas. **Tuesday:** breakfast: fruit whirls, apple juice; lunch: beef sticks, French fries, celery sticks, pears, pumpkin chocolate chip squares. **Wednesday:** breakfast: blueberry muffin, apple sauce; lunch: super nachos, green beans, cornbread, honey, half apple. **Thursday:** breakfast: waffle sticks, syrup, orange juice; lunch: hero sandwich, sun chips, cooked carrots, pineapple chunks.

### Sacred Heart

Activities: **Monday:** 6:30 p.m. Home and School; 7:15 p.m. school council. **Thursday:** 7:30 a.m. staff meeting; end of quarter. **Friday:** no school.

Menus: **Monday:** barbecue beef sandwich, smiley fries, fresh veggie mix, orange slices, oatmeal cookie. **Tuesday:** chicken strips, mashed potatoes, gravy, corn, bananas, whole wheat roll. **Wednesday:** ravioli, green beans, tossed salad, garlic bread, apple slices. **Thursday:** soup day: chili, chicken noodle soup, carrot sticks, fruit mix, crackers, cinnamon rolls.

### Heartland

Activities: **Thursday:** noon - dismiss; end of quarter; 1 p.m. staff work day.

**Friday:** spring break, no school.

### Golden Plains

Spring break.

### Brewster

No school, spring break.

### Colby Community College

Activities: **Sunday:** rodeo, Fort Scott; 11 a.m. softball, Butler County, El Dorado; 1 p.m. baseball, Cloud County, Concordia. **Monday:** women's golf, Garden City. **Tuesday:** women's golf, Garden City. **Wednesday:** 1 p.m. baseball vs. Brown Mackie; 3 p.m. softball, Barton County, Great Bend. **Saturday:** 1 p.m. baseball vs. Butler County; 2 p.m. softball vs. North Platte, Carl Adams Softball Field. **Sunday:** 1 p.m. baseball vs. Butler County.

### Triplains

Activities: **Sunday:** Daylight Saving Time begins; 3 p.m. home-school end-of-season basketball. **Monday:** school in session; 8 to 10:30 a.m. elementary "Manners" presentation; "Pennies for Patients" ends. **Tuesday:** School in session. **Wednesday to Friday:** Spring break.

Send us your calendar and menus. E-mail [colby.society@nwksociety.com](mailto:colby.society@nwksociety.com) or mail Colby Free Press, 155 W. Fifth, Colby, Kan., 67701.

# Food and frontier women join fourth grade art for March events

First of all, for all you "Food for Thought" fans who have been discouraged about the disappearing soup and mad scramble for chairs these last two events: We finally get it!

We need to adjust our planning to accommodate 60 to 90 people rather than the 30 we are used to. It's a wonderful problem, of course, to have more people in attendance than were expected.

We have ordered more chairs, bought a few more tables, and plan to have plenty of soup and accompaniments at our next program on Thursday. We also plan to haul out the sound system so our speakers will be easier to hear. So keep coming.

Our March lunchtime program on the 15th will focus on a few of the many stalwart women who settled Thomas County. We are looking forward to hearing Gary Adrian discuss his great-grandmother, Melissa Alger Wallace; Carol Thiel and Judie Withers tell us about the Thiel women; Erin Eicher Matthews share what she's learned about the women in the Eicher family; and Cindy Duffey talk about her ancestors. Many in the audience will no doubt have their own stories to contribute.

We are very excited about our next exhibit, which will begin on Tuesday, March 20, and run through Friday, April 6. Trish Starbuck has had her fourth-grade art students choose a Colby building to draw, and we will be exhibiting the drawings along with information about and photographs of the original buildings.

Included in the exhibit will be short statements by each of the students as to why they chose a particular building: "I picked the Landmark Church because I like the texture." "I picked the college because both of my parents work there." "I chose Palace Drug Store because I still go there today for birthday presents and stuff - that's cool!"



**Ann Miner**

• Around the Museum



ANN MINER/Prairie Museum of Art and History Prairie Museum Exhibit books have just been printed.

These charming comments offer us a little insight into the connections our kids have with the places in their community. Kudos to Trish Starbuck for finding a way to incorporate local

history into her classes.

The High Plains Art Club members graciously agreed to postpone their exhibit period to accommodate the student exhibit. Their mixed-media works will be on display from Monday, April 9, through the end of May.

The Prairie Museum of Art and History exhibit book is now in print and available at the museum. The 40-page publication contains information on the Kuskas as well as lots of photographs and information about each of the inside galleries and outside buildings, including a four-page spread on the Cooper Barn. Many visitors have asked for a book like this, so we are pleased to finally have it available for out-of-towners and Thomas Countians alike.

The old covered wagon from Sod Town arrived on our doorstep in February, and Larry Dilts has been busy stripping it down and repairing/replacing the wood parts that are too rotten to keep. For now it sits where the ABC Gallery once was; that display has been relocated into twelve moveable cases - built by Larry - in the middle of the High Plains Journey space.

Finally, our "Homesteading on the High Plains" trunk is finished and available for checkout by elementary school classes, Girl Scout, Boy Scout and 4-H groups and other interested parties. The trunk contains artifacts, documents, photos and a notebook full of information and activities pertaining to the period from about 1879-1910.

With 2012 being the 150th anniversary of the Homestead Act, it is a good year to explore this important piece of legislation and its impact on settlement out here. Contact the museum at 460-4590 or [museum@st-tel.net](mailto:museum@st-tel.net) for more information.

Ann Miner is the Education Director at the Prairie Museum of Art and History.

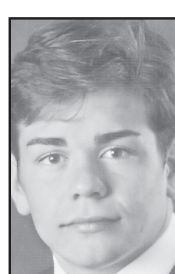
## Colby senior to compete in state oratory

By Christina Beringer

Colby Free Press  
[colby.society@nwksociety.com](mailto:colby.society@nwksociety.com)

Colby High School senior Michael Tubbs, Sixth District American Legion Oratorical Champion, is on his way to compete at the 2012 Kansas State Oratorical Contest in Topeka Saturday.

Tubbs will compete against the other district winners for scholarships of \$1,500, \$500, \$250 and \$150 and a chance to advance to the national



Michael Tubbs

where more scholarship opportunities are available.

"The purpose of the American Legion High School Oratorical Scholarship Program - "A Constitutional Speech Contest"

- is to develop a deeper knowledge and appreciation of the Constitution of the United States on the part of high school students," said oratorical committee chairman Linda Caudle.

"Other objectives of the contest include the development of leadership qualities, the ability to think

and speak clearly and intelligently and the preparation for acceptance of the duties, responsibilities, rights and privileges of American citizenship."

By winning the district competition on Jan. 22 at Cloud County Community College in Concordia, Tubbs advanced to compete in Topeka. His 5 to 10 minute speech was on his belief that it is unconstitutional to manufacture money.

By winning state, he'll have a chance to compete for scholarships of \$18,000, \$16,000 and \$14,000 at the national competition in Indianapolis.

"At state, each contestant will

give an eight- to 10-minute oration of their choice on any amendment to the U.S. Constitution," explained American Legion Capitol Post 1, "Following the orations, an assigned topic will be drawn and the contestants will have five minutes to prepare for a three- to five-minute talk on the topic."

The public is welcome to attend the contest. Arrive no later than 8:45 a.m. on Saturday at 3800 S.E. Michigan in Topeka.

We want your local news: e-mail to [colby.editor@nwksociety.com](mailto:colby.editor@nwksociety.com)

# BUSINESS DIRECTORY

To have your ad placed in the Business Directory call Sharon or Kathryn today at **785-462-3963**

### NEW SYSTEM

## PROFESSIONAL WINDOW CLEANING

(800) 611-6735

[www.MyWindowCleaner.net](http://www.MyWindowCleaner.net)  
Serving Colby since 1992!

Commercial • Residential • Free Estimates



David Browne III  
550 N. Franklin  
Colby, KS  
(785) 462-3388

I make insurance simple.



FARM BUREAU FINANCIAL SERVICES

Auto | Home | Life | Business | College | Retirement

Securities & services offered through EquiTrust Marketing Services, LLC, 5400 University Ave., West Des Moines, IA 50266, (877)860-2904, Member SIPC, Farm Bureau Property & Casualty Insurance Company, Western Agricultural Insurance Company, Farm Bureau Life Insurance Company, West Des Moines, IA. \*Affiliates: Company providers of Farm Bureau Financial Services © 2011 FBL Financial Group, Inc. M083-ML-BC (5-11)

## Natural Health Care

Lifestyle modification to promote balance and neurological integrity for individuals of all ages from infancy throughout one's lifespan.

Acupuncture - Needles or Laser treatments for allergies, facial rejuvenation, weight release and a variety of health related conditions with gentle chiropractic care.

Participating Medicare, BCBS of KS  
Provider and accept insurance from most medical insurance companies

DUFFEY CHIROPRACTIC CARE, INC.

Cynthia J. Duffey DC MS LPC  
Doctor of Chiropractic  
320 N. Lake Ave.  
Colby, KS 67701  
785-460-3224

## Dr. Tom Barlow DENTIST

785-460-7538

Appointments Readily Available

505 H N. Franklin, Colby

### UNDER NEW MANAGEMENT

## Mobile Home Lots for Rent

\$165 Month

(includes water, sewer & storage shed)

FREE Month with approved application

## Friendly Acres

Mobile Home Park

1150 S. Franklin, Colby

Call 785-462-6445

## ROOFMASTERS

Serving Colby for over 30 YEARS!

RESIDENTIAL 425 East Hill, Colby, KS

Heritage Shingles

Wood Shingles

IR Shingles

Stone Coated Steel

Metal Panels

COMMERCIAL

EPDM Rubber

White TPO Single Ply

Modified Systems

Built up Systems

Elastomeric Coating

785-462-6642

Licensed

Bonded

Insured

FREE ESTIMATES

WHO YA GONNA CALL?

## Meadow Lake Restaurant & Lounge

Monday Nights \$1 Draws

Saturday Nights Prime Rib



785-460-6443  
1085 E Golf Club Rd. • Colby, KS

## THOMAS County INSURANCE AGENCY

Serving NW Kansas for over 100 years.

Representing many companies to provide all your insurance needs:

- Home, Auto, Boat, Motorcycle, RV
- Farm and Crop Insurance
- Commercial Property, Automobiles
- General Liability, Workers Compensation
- Inland Marine, Builders Risk
- Auto Service Shops
- Body Shop and Collision Repair
- Contractors
- Restaurants
- Salons and Day Spas
- Strip Malls, Condominiums
- Churches, Schools, Day Care Centers

\* For great coverage and customer service contact me!



Dennis R. Tubbs/Agent

P.O. Box 506 • 490 N. Franklin  
Ph: 785-462-3939 • Fax: 785-462-3752  
[dtubbs@thomascountyins.com](mailto:dtubbs@thomascountyins.com) • [www.thomascountyins.com](http://www.thomascountyins.com)

## Baalmann Mortuary

190 S. Franklin • P.O. Box 391 • Colby, KS 67701

(785)462-2331

"Family Serving Families"

- Funeral & Cremation Services
- Monuments & Prearrangements

All Harrison Chapel Prearrangements will be honored

## High Plains RV Resort



Live at the resort in your RV Oakley/Colby!

Live in your RV at the #1 rated RV resort in Kansas. \$495 monthly rent - includes water, sewer and electric.

Hot tub, clean restrooms, Propane available, clubhouse and laundry room. We only have a few sites available for monthly guests, so call us now.

High Plains RV Resort • (785)672-3538 • [www.HighPlainsCamping.com](http://www.HighPlainsCamping.com)

We sell PROPANE PROPANE PROPANE!