

Classifieds

To place your classified ad, mail (155 W. Fifth), fax (785-462-7749), phone (785-462-3963), or stop by our office at 155 W. Fifth

Help Wanted



Now Hiring Shop Technicians

Full time and Part time positions available now at Mitten Travel Plaza. Excellent Career Opportunity. Blue Cross Blue Shield Insurance packages, Dental Insurance, Profit Sharing, 401k plan, paid vacation, fuel discounts, tire discounts, top wages, year-end bonus program, and many more benefits available to qualified employees. Experienced applicants encouraged and training also available. Please apply online at www.mittensinc.com or For more information call 785-672-3270. Mitten Inc. is an EOE.

HELP WANTED

Beardsley Equity Co-op has a full time opening with benefits. Apply in person or call the Beardsley Elevator (785) 538-2386.

Medical Assistant Instructor

Northwest Tech is seeking an individual that is energetic and professional with 4 years plus experience as a certified medical assistant, lab tech., licensed nurse or a certified medical records technician. Applicants must be capable of administrative, classroom and clinical responsibilities. Minimum of an associate degree required, bachelor degree preferred. Women and minorities are encouraged to apply. Excellent salary and benefit package. Estimated start date: July 2012. Open until filled.

Send resume, complete application, supply references, and unofficial transcript(s) to:
Northwest Tech, Attn: Brenda Chatfield, Vice President of Academic Affairs
PO Box 668, Goodland, KS 67735
E.O.E.



NOTICE OF NONDISCRIMINATION: NWKTC does not discriminate on the basis of race, color, national origin, religion, age, disability, or sex. Accusations concerning sexual discrimination, sexual harassment, and age discrimination should be referred to the TITLE IX COORDINATOR/AGE ACT COORDINATOR, Vice President of Student Affairs at 785-890-3641. Accusations based on disability or race, color, or national origin should be referred to SECTION 504 COORDINATOR/ADA COORDINATOR/TITLE VI COORDINATOR. College Counselor, located at 1209 Harrison (785-890-3641).

Help Wanted



Pepsi Beverages Company of Colby, KS has an **IMMEDIATE** opening for:

Full Time Field Service Technician

Please review the detailed job descriptions, requirements, and apply online TODAY at www.pepsibeveragesjobs.com

PBC is an Equal Opportunity Employer



(785) 462-8255
www.HomeLandRE.com



Pat Sloan (785) 443-3261
Marilyn Meyer (785) 462-2703
Toni Lindberg (785) 443-4032
Rock L. Bedore (785) 443-1653
Tom Harrison (785) 443-0136
Jerry Wycoff (785) 672-0429

1055 S. Range Colby, KS
www.HomeLandRE.com

COMMERCIAL LISTINGS

2-6 acre lots located along I-70 frontage. Colby, KS. Give Marilyn a call today!
280 E. 4th, Colby, KS Big opportunity at small cost. \$47,500 PRICE REDUCED Call our office today!
1690 W. 4th, Colby, KS Well maintained dental office with over 2,100 sq. ft. \$160,000 Give Marilyn a call today!
217 Center, Oakley, KS Our Place-restaurant with all equipment included. \$180,000 Give Jerry a call today!
1675 W. 4th, Colby, KS Use the warehouse and let the office lease help with payments. \$195,000 Call Pat for details!
464 Highway 83, Oakley, KS Colonial Steak House. Excellent opportunity, some owner financing available. \$350,000 Call Tom!
Commercial lot 6.7 acres adjacent to Wal-Mart with I-70 frontage. Colby, KS (Can be split) \$545,000 Call Rock!
Commercial lot 10 acres North of Interstate between Franklin & Country Club Drive East of Bourquins. (Can be split) Call Tom!

AGLAND LISTINGS

6403 Old Hwy. 40, Park, KS 41 acres grassland, three bedroom house & several out-buildings. \$149,500 Call Rock today!
160 acres Sherman County CRP & Cropland SW of Goodland. 2012 CRP payments & minerals to Buyer - UNDER CONTRACT
480 acres Logan County, KS CRP Land - UNDER CONTRACT
480 acres Sherman County, KS Cropland Good productive land with a homestead. \$1,344,000 Call Tom today!
480 acres Thomas County, KS Land - Call Tom Harrison - UNDER CONTRACT
160 acres Sherman County, KS Irrigated Land - **SOLD**
320 acres Sherman County, KS Dryland - **SOLD**

Real Estate

INCOME PRODUCING



1675 W. 4th
6,000' Office + 4,500' Warehouse
Call Pat for an appointment!

Real Estate



Molly J. Oliver
462-5203



Spacious Corner Lot. 4 BR, 2 bath & shop 704 Arcade \$82,000



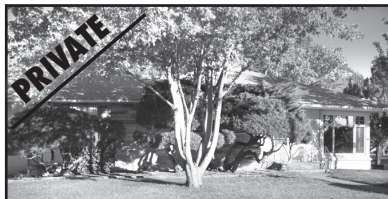
Investment Property 4-plex - Great Rent History 402 S. 4th Call Molly



So Very Affordable. 3 BR, Fm Rm, Fire Place + 309 Rock Island \$42,000



Kevin Barnett
443-1722



3-4 BR, 2 bath Home. Beautiful yard & Private 125 N. Riddle \$97,500



Brick - Move-in Perfect Home. 4 BRs, 2 bths, office & more 1310 E. 8th \$165,000



Why Rent? Own a Home. 3 BR, 2 bth, 24'x26' Shop 425 S. Grant \$72,500

Stock Realty & Auction Co.
390 N. Franklin Ste. 100
Colby, KS 67701
www.stockra.com
(785) 460-7653



Beautiful Office Bldg. Downtown location 140 W. 4th \$97,500



235 +/- Acres in Logan Co. E 1/2 16-14-35 Call Kevin



Call Kevin & view. Great 5 BR Home 420 Colby Av. \$83,000

Real Estate



BUYING MINERALS AND RANCLAND

Interested in selling all or a portion of your minerals or ranchland? We're interested in buying. We offer THE MOST COMPETITIVE PRICES AROUND!!!
Call us today at 1-888-415-5726 or e-mail george@harvestlm.com

FARM & RANCH REALTY, INC.



1420 W. 4TH - P.O. BOX 947
COLBY, KS 67701
785-462-3904



DONALD L. HAZLETT, Broker
www.farmandranchrealty.com

We invite you to talk to one of our Real Estate professionals:

- Don Hazlett, Broker • Cindy Hake, Office Manager • Naomi Ward • Melanie Voss • Steve Hazlett • Ron Evans • Ed Currier • Neal Mann • Mike Bailey • Scotty Legere • James Hazlett • J.D. Hininger

AUCTION SCHEDULE

- 3/6/12 - Farm Machinery Auction for Chuck Hawkins, et al. at Sheridan Lake
- 3/9/12 - 640 acres Lane County, KS cropland & grass, 1/2 E of Dighton on Hwy 96, selling in 2 tracts and combo, N/2 of 20-18-28 & S/2 of 20-18-28 for Beesley Family
- 3/14/12 - 19,000+ ACRES EXCELLENT DRYLAND & IRRIGATED CROPLAND, Hudye Farms
- 3/31/12 - Annual Spring Consignment Auction

19,000+/- ACRES KANSAS & COLORADO LAND AUCTION

SHERMAN, LOGAN & WALLACE COUNTIES, KANSAS & KIT CARSON & CHEYENNE COUNTIES, COLORADO

SELLER: HUDYE FARMS, U.S., INC.

Wed., Mar. 14, 2012 @9:30 AM, MDT
Burlington Community Center, Burlington, CO

PRODUCTIVE DRYLAND & IRRIGATED CROPLAND - EXCELLENT FOR WHEAT, CORN & SUNFLOWERS!

Selling in 42 Individual Tracts

LOCATED FROM WINONA, KS TO STRATTON, CO - Selling in Tracts ranging in size from 80 to 1,600 acres - BUY 1 TRACT OR BUY THEM ALL!

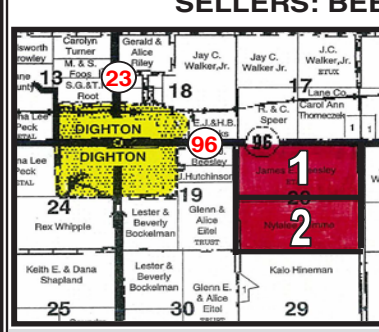
PRE-REGISTRATION AVAILABLE -- INTERNET BIDDING STARTS MARCH 1, 2012

628+/- ACRES CROPLAND LANE COUNTY LAND AUCTION

Friday, March 9, 2012 @10:30 AM, CST

AUCTION LOCATION: American Legion, Dighton

SELLERS: BEESLEY FAMILY



LEGAL DESCRIPTIONS:
TRACT 1: N/2 of 20-18-28, less hwy acres
•305.3 ac cropland
TRACT 2: S/2 of 20-18-28
•294.1 ac cropland &
•21.8+ ac grass
•400 ac wheat planted on the two tracts w/Buyer(s) to receive the landlord's 1/3rd share.

INTERNET BIDDING AVAILABLE!

**CHECK OUR WEBSITE FOR ADDITIONAL LISTINGS & VIRTUAL TOURS!*

REAL ESTATE FOR SALE

- NORTON - 160 acres dryland cropland, excellent producing quarter - 99bu APH for 2011 corn, immediate possession, N of Reager - NE/4 of 3-2-25
- HAMILTON - 160 acres CRP, 8 miles North of Coolidge - NW/4 of 2-22-43
- WALLACE - 160 ac cropland, N of Sharon Springs, immediate possession, NE/4 of 28-12-40 - JUST LISTED!
- PAWNEE - 960 ac exc cropland, NW of Larned, offered in 6 tracts - SW/4 of 25-22-18, SE/4 of 35-22-18, NE/4 of 3-23-18, SW/4 of 3-23-18, SW/4 of 9-23-18 and SE/4 of 7-23-18 - NEW LISTING!
- GREELEY - 160 acres cropland, SW of Tribune - NW/4 of 27-19-4
- GRAHAM - 160 ac cropland, CRP & grass, SE of Hill City - SE/4 of 28-8-22
- LANE - 640 ac CRP, expired CRP & grass, SE of Alamota
- KEARNY - 320 ac CRP, NW of Lakin - S/2 of 32-23-38



NOW HIRING

Part-Time/Full-Time
• Housekeepers

Holiday Incentive Pay! • 401(K)!

Employee Recognition Programs! • Advancement Opportunities!

Applications may be downloaded online at www.bosselman.com and emailed to hr@bosselman.com or dropped off at the Hampton Inn located in Colby, KS

EOE Post-Employment Drug Testing Required

COME JOIN OUR TEAM!

FULL-TIME COMPUTER TECH

Citizens Medical Center, Inc. is a progressive healthcare provider in Colby, Kansas with an expanding IT department. Responsibilities will include: implementing and maintaining EHR and maintaining a growing network for the hospital, physician's clinic and long term care facility. We offer competitive wages and excellent benefits.

Please Contact:
Human Resources
CITIZENS MEDICAL CENTER, INC.
100 E. College Dr.
Colby, KS 67701
(785) 460-4877
www.nwkshealthcare.com
EOE



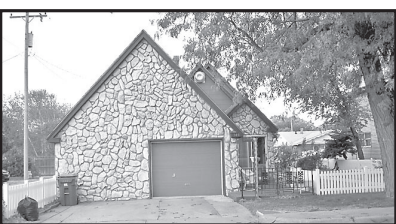
Melanie Voss
Residential Agent

Whether Buying or Selling -- The Time Is Right!



Your house could be here!

CALL MELANIE TODAY AT 785-443-0611



PRICE REDUCED!

345 N. Garfield
3 Bedroom, 2 bath
Price: \$84,950

"When you list with Farm & Ranch, it's as good as SOLD!"