

LEAH JENNINGS



I plan to attend Colby Community College.
 Parents: Dan and Amy Jennings



1065 S. Range • 462-3305

RACHEL JUENEMANN



We are so proud of you and all your accomplishments. Follow your dreams. Keep smiling and most importantly take God with you on your journey in life!

Love, your family

I plan to attend Kansas State University and major in nutritional science with a minor in leadership studies.

Parents: Steve and Sara Juenemann

Farm Implement & Supply Co, INC.



1025 1st ST. ANNEX
 462-2411

KAYLEE MERIDETH KECK



Kaybug, Words can't express the love, joy and pride we have for you. Celebrate life!

Love, Dad and Mom

I plan to attend Colby Community College on a golf scholarship then transfer to the University of Colorado to obtain a PGA license and business degree.

Parents: David and Terri Keck



Hajoca
 625 S. Country Club
 785-462-6731



395 N. Franklin Ave
 Colby, KS
 785-460-6311

MARY KINNEAR

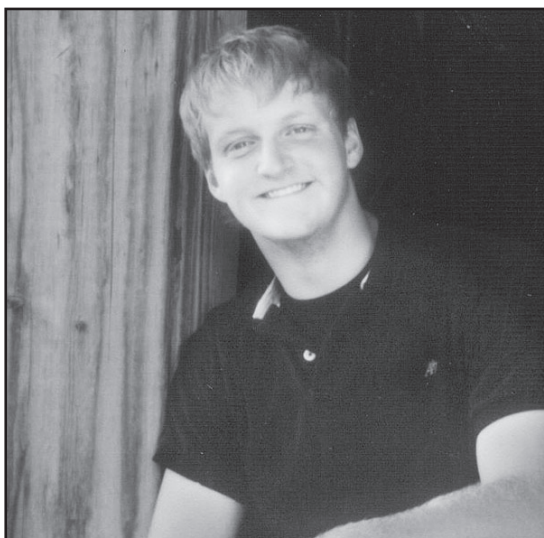


I plan to go to college.
 Parents: Morris and Ruth Kinnear



1927 S. Range
 Colby, KS
 460-LUBE

LEIGHTON KOEL

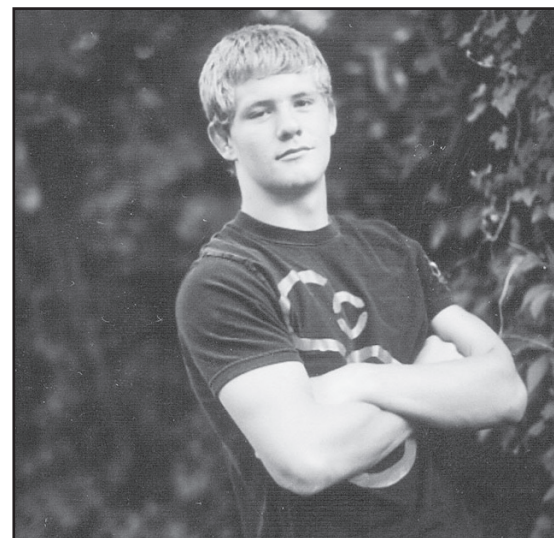


I plan to attend Kansas State University at Salina and go into the professional pilot program
 Parents: Jeff and Jennifer Koel



155 W. Fifth St. • Colby, KS
 785-462-3963

KONNOR PAUL KRISS



I plan to attend Colby Community College to wrestle and major in dentistry.
 Parents: Kevin and Cindi Kriss



Hajoca
 625 S. Country Club
 785-462-6731



FARM & RANCH REALTY, INC.
 1420 W. 4TH
 COLBY, KS 67701
 785-462-3904
 DONALD L. HAZLETT,
 BROKER



Farmers & Merchants Bank of Colby



Member FDIC
 240 W. 4th
 460-3321

Tubbs & Sons Ford Sales Colby, KS

810 S. Range • Colby, KS
 785-460-6746