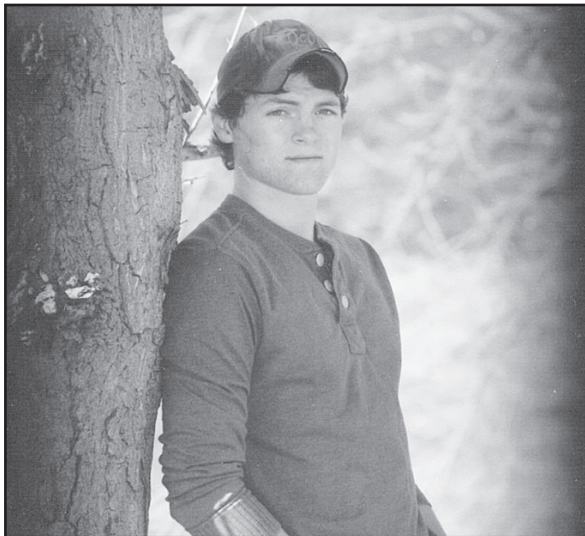


### CALEB CARTER



*I plan to study farm and ranch management at Colby Community College.*

Parents: J.C. and Diane Carter

### MASHA CLAASSEN



*I plan to attend Colby Community College and major in athletic training.*

Parents: James and Brenda Claassen

### JADE KRUSE



*I plan to work towards equine reproduction at Colby Community College.*

Parents: Marshall and Julie Rhea  
The late Sam Kruse



1065 S. Range • 462-3305



1005 S. Range  
785-462-8231



1065 S. Range • 462-3305

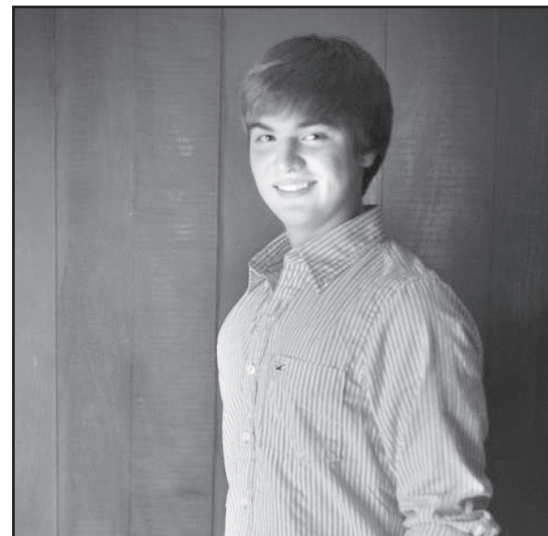
### NATALIE MORRIS



*I plan to attend Colby Community College.*

Parents: Tim and Lori Morris

### ANDREW DAVID WOOD



*I plan to attend Colby Community College for two years then transfer to Kansas State and major in architecture.*

Parents: Mark and Lucy Wood

**F&M** *Together... Making a Difference.* 

Member FDIC  
**Farmers & Merchants Bank of Colby**  
 240 W. 4th  
 460-3321

**Great Western Life**

1170 S. Country Club Drive  
 Colby, Kansas  
 462-2100

 100 E. College  
 Colby, KS  
 785-460-7511