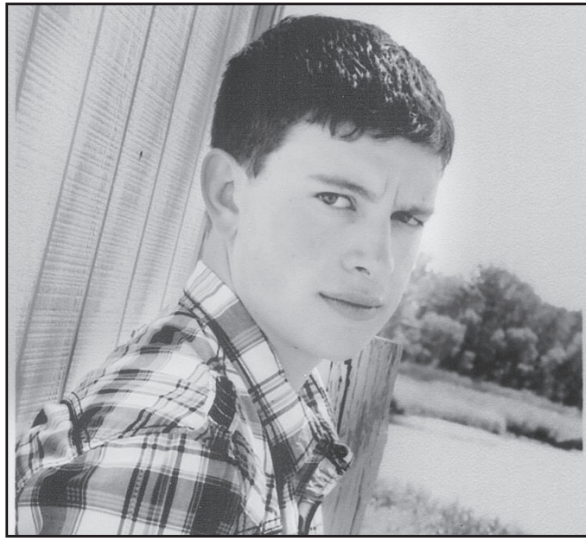
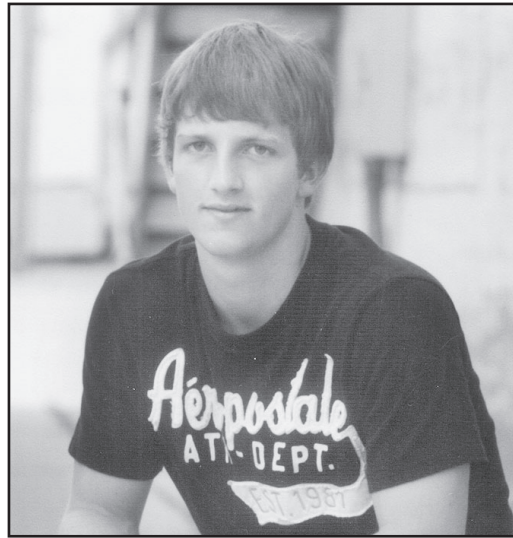


TAYTE QUERY



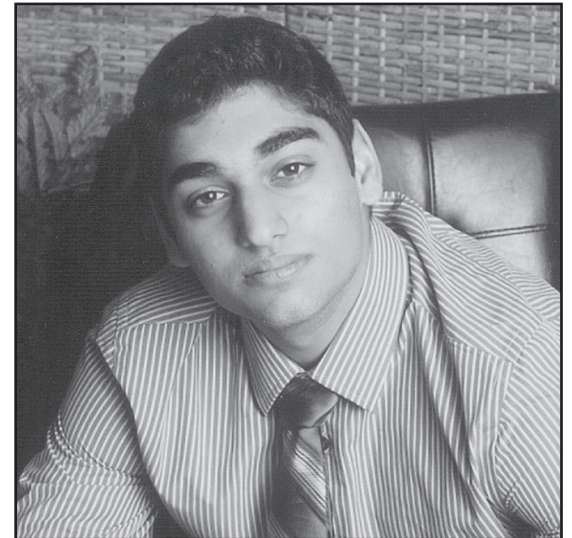
I plan to study architecture.
Parents: Charles and Ghia Ketzner-Query

JORDAN RASMUSSEN



I plan to attend Colby Community College then transfer to a four year university.
Parents: Terry and Cindy Rasmussen

CHIRAG RONVELIA



I plan to attend the University of Kansas.
Parents: Vijay and Jayshri Ronvelia



700 Horton Ave
785-460-0044



1760 W. 4th • Colby
785-460-2181



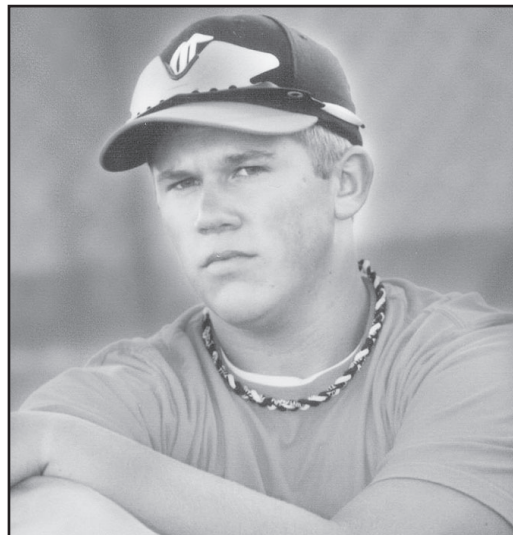
155 W. Fifth St. • Colby, KS
785-462-3963

PAIGE ROOPCHAN



I plan to attend a Bible college.
Parents: Peter Roopchan

BRADEN WILLIAM SAGER



Braden, Don't let the fear of striking out keep you from playing the game! We are so proud of you and love you very much.

Love, Dad, Mom, Cory and Darby

I plan to major in architecture and play baseball.
Parents: Alan and Tonya Sager

PAUL SCHIFERL



I plan to attend Kansas State University and major in mechanical engineering.

Parents: John and Becky Schiferl



1205 Country Club
785-462-6692



100 S. Range Ave • Colby, KS
785-462-2224



CERSOVSKY INSURANCE
"Customer Service is Our Policy"
CINDY L. CERSOVSKY
370 N Franklin • Colby
785-462-7544 • Toll Free
888-462-7544



100 E. College
Colby, KS
785-460-7511