

Classifieds

Notices

Brown's Consignment Auction
Sunday, December 11, 10 a.m.
Hoxie 4-H building. Saleable items
welcome. Wide selection of items
consigned. Taking bookings also
for February 5th Auction. Evenings
785-675-3767 Mickey Brown.
---12/2---12/8---

Farmer's Christmas Market Craft Show, BP Miller Building, 895 S.
Country Club Drive, Colby, Kansas,
Saturday, December 3, 9:00 a.m.
- 3:00 p.m. Linda's Bakery, Way
Back Yonder, Made of Iron, The
Denver Lady, Sheena's Boutique,
Geraldine's Sugar Cookies, Patsy
Cake and Parker's Homemade All
Beef Summer Sausage & Spicy
Mustard.
---11/30---12/2---

Open House! Model Trains and Toys. December 9, 10, and 11 from 9
a.m. - 9 p.m. 106 Logan St. Atwood,
KS 67730
---11/21---12/9---

5th Annual Holiday Gift & Craft Fair, Saturday, December 10, 9 a.m.
- 3 p.m. Colby Community College
Student Union.
---11/11---12/8---

Company's Coming: Carpet Cleaning Special - 3 Rooms, only
\$149.95! Dry-Foam Safe and Green
Seal approved. Servicing NWKS
mileage free since 1987! A+ Clean-
ers (785) 538-2526 or (785) 443-
5400, Johnene Cheney.
---10/26---12/19---

Dan is back! Dan Geschwentner.
Small remodeling and repair jobs.
Call 785-443-3673.
---12/15---TFN---

Classified ad deadlines (word ads
only). Noon the day before publica-
tion (noon Friday for Monday paper).
Please check your ad the first time
it runs. If you find an error, please
call at (785) 462-3963 so it can be
corrected, since we will not be
responsible for errors after that first
day. The *Colby Free Press*.
---3/1---TFN---

Help Wanted

Cook - part time position avail-
able. Flexible hours, experience
preferred but will train the right
person. Competitive pay. Apply in
person at Fairview Estates, 1630
Sewell Ave., Colby KS 67701.
---12/1---12/14---

Carriers needed to deliver the Colby Free Press! Great for some-
one needing extra income. A few
hours a day, 4 days a week. Bonus
after 3 months. To apply please
stop by the office at 155 W. Fifth
St., Colby or for questions call
785-462-3963.
---11/30---TFN---

CNAS and CMA positions avail-
able on all shifts for our growing
Assisted Living Facility. We offer
competitive wages, holiday pay,
shift differentials, and other ben-
efits available. Apply in person at
Fairview Estates Retirement Com-
munity, 1630 Sewell Ave, Colby, KS
67701 - 785-462-2154. EOE
---11/30---12/5---

CDL Driver Wanted local haul,
home nights, permanent position.
785-899-7513 or 785-821-2217.
---11/30---12/26---

Help Wanted

Travel Agency part time mornings,
occasional full time weeks. Exten-
sive computer, phone, and people
skills required. 785-462-6999.
---11/30---12/5---

Colby Public Schools is accepting
applications for a Paraprofessional.
Sick leave, health insurance, state
retirement package and other ben-
efits may be available. A classified
district application form may be
picked up at the administration of-
fice, 600 West Third St, Colby, KS
or downloaded from our website
at www.colbyeagles.org. Applica-
tions accepted until the position is
filled. EOE
---11/30---12/2---

Sale Rep/Territory Manager. Full
time. Excellent Opportunity for
experienced sales professional.
94 year old business is seeking an
experienced sales person to sell
and service accounts for agricultural
and light construction equipment
sales to dealers in our western sales
area. Salary plus commission, ben-
efits package, vehicle provided and
expenses paid. CDL a plus. Send
resumes to: Attn: Ag Department,
PO Box 3207, Wichita, KS 67201 or
tprice@pricebroseq.com.
---11/25---12/22---

Help Wanted: Farming and Cattle
operation. Must have experience
on a feed truck, welding, handling
cattle, doctoring, maintenance,
etc. CDL a big plus! Pay based on
experience and housing provided.
785-672-8469.
---11/23---12/7---

Looking for full and part-time farm
and ranch help near Brewster. Cell
785-672-0158 or Home 785-694-
2233.
---11/23---12/7---

Maclaskey Oilfield Services, Inc.
is now hiring transport drivers for
crude oil hauling. Class A CDL with
hazmat and tanker endorsements
and a current DOT physical required.
Candidates must be willing to work
overtime and weekends. We are
an expanding crude oil purchasing
company with 34 years of oilfield
experience. Please send resume to
Maclaskey Oilfield Services, Inc., PO
Box 222, El Dorado, Kansas, 67042
or call Allison Albright, Office Man-
ager, at 316-321-9011 for details.
---11/18---12/2---

Open 24 Hours
PETRO-LUBE
PMs • Tires • Truck Repair



WANTED:
Truck Service Advisors
Lube Technicians
Technicians

We are looking for a few good individuals
that have some good communication skills
and like to get a little dirty at times.
We offer Excellent Benefits, Paid Holidays,
Vacation, and 401k.

Please stop in today to fill out an application
or if you would like you can apply online
at www.mypetrojob.com or you can call
1-888-6-PETRO-JOB (1-888-673-8765)
hiring code 101

If you have any questions please give us a
call here at the shop. 785-460-4260.

Public Notice

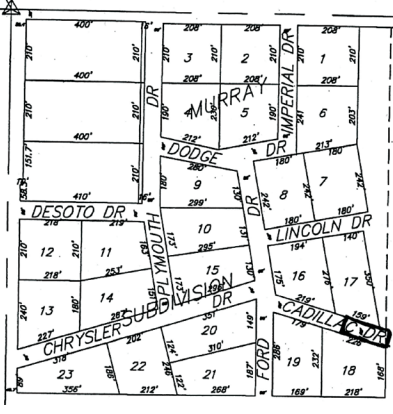
Notice is hereby given that Denis Wieland submitted a letter to the Planning Commission requesting to have a portion of Cadillac Drive, east of the Access of Lots 17 and 18 in the Murray Subdivision vacated. The Planning Commission (City of Colby) has submitted request for vacating said portion.

Notice is hereby given that a public hearing shall be held on the 12th day of December, 2011 in the County Commissioners Room of the Thomas County Courthouse at 9:00 a.m., at which time the Board of County Commissioners may approve or disapprove the request for the vacating of said street.

Dated this 23rd day of November, 2011.

/s/ Shelly A. Harms
Thomas County Clerk

Board of County Commissioners
Ken Christiansen
Paul M. Steele
Byron Sowers



(Published in the Colby Free Press on Friday, November 25, December 2, 9, 2011)

Public Notice

Notice of Budget Hearing for Amending the 2011 Budget
The governing body of
Thomas County

will meet on the day of December 19th, 2011 at 10:00 AM at Commissioners Room, 300 N Court, Colby, KS for the purpose of hearing and answering objections of taxpayers relating to the proposed amended use of funds.

Detailed budget information is available at Thomas County Clerk's Office, 300 N Court, Colby, KS and will be available at this hearing.

Summary of Amendments

Fund	2011 Adopted Budget			2011 Proposed Amended Expenditures
	Actual Tax Rate	Amount of Tax that was Levied	Expenditures	
General	10.666	916,328	2,298,584	2,498,584
County Health	1.513	130,009	245,867	245,867
Sanitary Landfill	0.489	42,000	399,179	474,179
E911			90,134	265,134

Shelly A. Harms
Official Title: County Clerk

(Published in the Colby Free Press on Friday, December 2, 9, 16, 2011)

Help Wanted

Wanted - Experienced Truck Driver. Good pay, benefits, decent home time. Jack 785-675-8375 or Jim 785-675-2196.
---10/12---12/5---

Needing someone to deliver news-
paper bundle to Oakley 3 to 4 times
a week. This would be great for
someone who already commutes
to Colby from Oakley. Please call
the *Colby Free Press* if interested.
785-462-3963.
---9/28---TFN---

Now hiring for all positions. Apply
between 6 a.m. - 1 p.m., Monday
- Saturday. See Don or Tammy at
Village Inn Restaurant, 2215 S.
Range.
---9/7---TFN---

BREWSTER - The Colby Free Press
needs a part-time corre-
spondent to report local news in the
Brewster area. Call Kevin at 785-
462-3963. Paid by the column.
---3/25---TFN---

Child Care

Licensed Day Care in Colby has
openings for 18 months to kinder-
garten age. 785-269-7509.
---11/30---12/5---

Misc for Rent

Murray Equipment Leasing, LLC
in Colby is now offering construc-
tion equipment for rent. Some items
include a 38 ft. skytrack forklift, and
an 85 ft. boom truck. If interested
please call 785-443-1339 or 785-
462-6908.
---8/3---TFN---

Apartments for Rent

2 bedroom basement apartment
for rent. For information call 785-
443-1601.
---11/30---12/5---

South Park and Meadowlark Manor. Rent based on income.
Equal Housing Opportunity. www.colbyhousingauthority.com 785-
460-6763.
---9/21---TFN---

Houses for Rent

One bedroom house, stove re-
frigerator, W/D hookup. Available
January 1. No pets/smoking. 785-
462-2529.
---12/2---12/15---

Very nice 3 bedroom home. \$700 a
month. Please call 785-443-2010.
---12/1---12/7---

2 bedroom, 1 bath, central heat
& air. Includes stove, refrigerator,
washer & dryer. No pets. 785-462-
0886.
---12/1---12/7---

4 bedroom, 2.5 bath in a great loca-
tion. \$875.00 a month. No pets and
no smoking. Call 785-650-8195.
Leave a message.
---11/23---TFN---

Mobile Home for Sale

Very nice 2 bedroom mobile home.
Central heat and air, call 785-462-
3248.
---11/30---12/5---

Very clean, 2 bedroom, 1 1/2 bath.
All appliances. 785-269-7179
---11/23---12/7---

Misc. for Sale

Misc. roofing and construction
material for sale 740 E. 4th, drive
by and look. Call and make an offer
785-443-1339.
---12/2-12/8---

Weight lifting equipment. Ad-
justable weight lifting bench with
attachments. Adjustable leg-squat
spotter rack. 785-462-7357.
---12/1---12/21---

TV Stand - Excellent condition. 71
1/2" wide, 71 1/4" high. Includes 32"
Sanyo TV. \$225 - 785-462-2356 or
785-443-2690.
---11/30---12/5---

Opening: Sunday, November 27
thru December 18. FRESH CUT
TREES, GARLAND and WREATHS!
1 mile west of Colby on Highway
24. Oh Christmas Tree. Monday -
Friday, 5 p.m. - 8 p.m. And Saturday
- Sunday, 1 p.m. - 8 p.m.
---11/23---12/7---

Heavy duty commercial batter-
ies and top quality filters for most
everything on your farm at factory
direct prices at Colby Ag Center
785-462-6132.
---10/19---1/4---

Wanted

Wanted: Summer Grass for 25 to
40 Spring Pairs in Oakley area. Jim
Porter. 785-672-0393.
---11/28---12/16---

Vehicles for Sale

2007 Chevrolet 2500 4x4. Many
extras and very clean. \$22,000.
785-462-2152.
---11/21---TFN---

WHY CHOOSE FARMERS & MERCHANTS BANK FOR YOUR HOME LOAN?

- + No loan points to pay!
- + Government guaranteed loans with little or no down payment!

- + Pre-qualifications!
- + Experienced loan staff!



Jacque Golemboski
Mortgage Loan Officer
NMLS #643818
F&M Bank NMLS #528146
www.fmbcolby.com



Farmers & Merchants Bank of Colby
Serving Colby and Northwest
Kansas since 1887

Member FDIC 240 W. 4th St. Colby, KS (785) 460-3321

Equal Housing Lender



FARM MACHINERY & EQUIPMENT AUCTION

WENDELL FARMS

TUES., DEC. 13, 2011, @ 10:30 AM, CST

AUCTION LOCATION: FARM & RANCH REALTY AUCTION PAVILION, LOCATED ½ MILE WEST OF COLBY, KANSAS ON HWY 24

ON-LINE BIDDING AVAILABLE

5 COMBINES



2011 CASE IH 8120 - ONLY 173 HRS



'07 CASE IH 8010



'06 CASE IH 8010



'97 CASE IH 2188



'95 CASE IH 2188



4 TRACTORS

2009 CASE IHC STX485 QUADTRAC - ONLY 654 HRS



'99 JD 9200



'94 JD 8410



'92 JD 4955

TRACTORS, ROGATORS & FORKLIFT: •'09 Case IH STX485 Quadtrac •'99 JD 9200 4x4 •'94 JD 8410 •'92 JD 4955 •'03 Ag-Chem RoGator 1264 •'97 Ag-Chem RoGator 854 •'94 Ag-Chem Terra-Gator 1803 •CAT Forklift
COMBINES & HEADERS: •'11 Case IH 8120 •'07 Case IH 8010 •'06 Case IH 8010 •'97 Case IH 2188 •'95 Case IH 2188 •'05 Macdon 36" 973 draper head •'03 Macdon 36" 962 draper head •'09 Case IH 3412 corn head •Case IH 1083 12 row corn head •2) JD 1253A row heads •JD 930 platform head •'97 Case IH 1010 wheat head

7 TRUCKS



'00 INT'L 9400



'00 INT'L 9900



'98 INT'L 9300



'98 INT'L 9400



'92 INT'L 9300



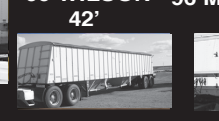
'00 TIMPTE 42'



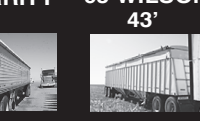
'99 WILSON 42'



'96 MERRITT 42'



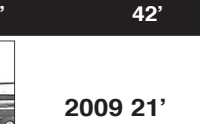
'93 WILSON 43'



'89 MERRITT 42'



'84 TIMPTE 40'



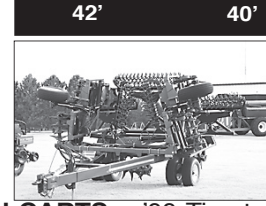
'82 MERRITT 42'



2011 CASE IH 1250 24-ROW PLANTER
THIS PLANTER HAS NEVER BEEN IN THE FIELD!



2010 DEMCO 1350 GRAIN CART



2009 21' SMART-TILL

TRUCKS, PICKUPS & 4-WHEELER: •'03 Int'l 9200 •'00 Int'l 9400 •'00 Int'l 9900 •'98 Int'l 9300 •'98 Int'l 9400 •'92 Int'l 9400 •'92 Int'l 9300 •'79 IHC Nurse truck •'77 Ford F-800 • IHC easy rider floater truck •'05 Toyota Tundra •'97 Dodge Ram 2500 •'93 Chevy 2500 •'83 GMC C-1500 •Honda 4-wheeler

www.farmandranchrealty.com

FARM & RANCH REALTY, INC.
1420 W. 4th * Colby, KS 67701
TOLL FREE - (800) 247-7863



DONALD L. HAZLETT
BROKER/AUCTIONEER



"When you list with Farm & Ranch, it's as good as SOLD!"

FARM EQUIPMENT: •'11 Case IH 1250 front fold 24-row planter •'08 Case IH 1250 24-row Planter •'99 JD 1770 Planter/Fertilizer •'11 SD15 Rhino mower •Kent 9533 Plains Plow •100' Hutchinson Mass mover •'09 21' SmartTill •(12) 6,000 gal poly tanks •(6) 10,000 gal fiberglass tanks •(5) 6,400 gal poly tanks •3,200 gal skid tank •1,600 gal fertilizer cart •Hess 36' chisel •6,000 gal ferti lizer storage tanks •Flexi-Coil 36' Packer •13 Shank Orthman ripper •Quinstar 21' Terra Firmer •14' Box scraper •Krause 36' vertical disc •2,500 gal cone bottom storage tank •NEW Loftness 10' grain bagger & bags *NO trailer items - so BE ON TIME!*