

Public Notice

Annual Report of South Randall Township
Thomas County County, Kansas

The undersigned treasurer and trustee of South Randall Township, submit the following report for the year ending December 31, 2010.

FINANCIAL REPORT

Name of Funds	Cash Balance Jan. 1, 2010	Total Receipts	Total Expenditures	Cash Balance Dec. 31, 2010	Unpaid Bills Dec. 31, 2010
General	5,443.00	94,962.00	57,536.00	42,869.00	0.00
General Pg 2	0.00	0.00	35,791.00	-35,791.00	0.00
General Pg 3	0.00	0.00	6,611.00	-6,611.00	0.00
Totals	5,443.00	94,962.00	99,938.00	467.00	0.00

Total Cash Balance for all Funds 467.00

Does the Total Cash Balance for all Funds equal to Cash Balance Dec. 31? Yes

I certify that this financial report is a correct summary of all money received and expended as well as all unpaid bills for the township during the year ending December 31, 2010.

Date: 1-21-2011

Bob Ottley
Township Treasurer

(Published in the Colby Free Press on Friday, January 28, 2011)

Help Wanted

HELP
wanted

The Sheridan County Public Health is accepting applications for the positions of Health Department Administrator and a Part time RN. Salary based upon qualifications. Contact the county clerk's office 785-675-3361 or Lynetta 785-675-2101 for information or application. Position open until filled. Equal Opportunity Employer.

Real Estate

OPEN HOUSE



431 Smith Dr.

SUNDAY JAN. 30
3:00 - 4:30

HOSTED BY:
TOM HARRISON
&
TONI LINDBERG



1055 S. Range 462-8255
www.homelandre.com

Help Wanted

RE

Rawlins County Health Care in Atwood, Ks is looking to fill a full time position in its updated laboratory. The duties would be shared with two other techs and a phlebotomist. This position involves call and rotating holidays. We have a good benefits package and competitive salary. MT or MLT preferred but may entertain other qualified individuals. Interested individuals should contact:

Craig Cole, Lab Manager
707 Grant, P.O. Box 47
Atwood, KS 67730
785-626-3211
ccole@rchc.us

HELP WANTED

Rawlins County Communications is seeking a team-oriented individual for the position of Part-Time Dispatcher. The successful candidate will be trained to answer 911 calls and dispatch the appropriate Emergency Responders. The successful applicant will have high school diploma or GED, must be willing to work with the public, and be able to pass and maintain NCIC certification. It is preferred that the candidate lives within Rawlins County. Rawlins County Communications is an EOE. Persons wishing to apply may pick up an application at Rawlins County Court House, 607 Main St., Atwood, Kan. 67730. (Phone: 785-626-3209). Applications to be reviewed upon receipt and will be accepted until January 31, 2011.

Use the Classifieds!

Help Wanted

NOTICE TO THOMAS COUNTY TAXPAYERS

It is your responsibilities to file your Personal Property Assessment with the County Appraiser's Office each year. Reportable items include: Farm Trucks, Trailers, Mopeds, Dirt Bikes, ATV's, Camping Trailers, Boats, Airplanes, Mobile Homes, Golf Carts, Jet Skis, Snowmobiles, and Business Equipment & Fixtures. Real Estate improvements, or structural changes to buildings must also be reported. The filing deadline is the same for Individuals, Businesses, and Corporations. Due date is on or before March, 15 2011. The deadline will be observed and penalties imposed as directed by law. We don't like imposing penalties any more than you like paying them. PLEASE FILE EARLY. If you have previously had property to declare, the forms were mailed in January. Otherwise, assistance will be provided at the Appraiser's Office in Colby from 8 a.m. to 5 p.m. Monday through Friday.

Help Wanted

Help Wanted

The City of Colby Housing Authority is seeking applications for a position in the Maintenance Department. Applicant must possess a high school diploma or GED equivalent; have a valid Kansas Driver's License and a driving record free of convictions for at least one year, and no felony convictions. The Colby Housing Authority is an Equal Opportunity Employer and provides optional health and life insurance, sick leave, vacation, and KPERs retirement benefits. Entry-level wage is \$10.45 to \$12.70 depending on experience and qualifications. Persons wishing to apply may pick up an application at the Colby Housing Authority office, 600 S. Mission Ridge Ave., or may phone 785-460-6763 to request one by mail. Completed application must be received by the close of business on Monday, January 31, 2011.

Real Estate

Are you thinking of selling your land??

Let Stock Realty & Auction Co. go to WORK for YOU!

In the last 60 days, Stock Realty & Auction Co. has sold 5 quarters of Ag Land in Gove, Thomas, & Sheridan counties for a total of over \$1.9 million dollars!

CALL ONE OF OUR STOCK TEAM MEMBERS! WE SELL!

Terry Stover (785)626-2082	Molly J. Oliver (785)462-5203	Kevin M. Barnett (785)443-1722
-------------------------------	----------------------------------	-----------------------------------

390 N. Franklin Ste. 100 • Colby, KS 67601 • www.stockrealtyandauction.com



Real Estate

"An Agent Outselling"



Stock Realty & Auction Co.
390 N. Franklin Ste. 100
Colby, KS 67701
(785) 460- 7653
(785) 462-5203
www.stockra.com

Make a Difference - Please Recycle



Real Estate

FARM & RANCH REALTY, INC.

1977 - 2011
34+ YEARS OF
EXPERIENCE
EXPERTISE
EXCELLENCE



1420 W. 4TH - P.O. BOX 947
COLBY, KS 67701
785-462-3904

DONALD L. HAZLETT, Broker



DON HAZLETT

www.farmandranchrealty.com

WE INVITE YOU TO TALK TO ONE OF OUR REAL ESTATE PROFESSIONALS!

Naomi Ward • Steve Hazlett • Ron Evans • Ed Currier • Neal Mann • Mike Bailey • Scotty Legere

160 ACRES CROPLAND & FARMSTEAD
LAND AUCTION
DECATUR COUNTY, KANSAS
TUES. FEB. 1, 2011 @10:30 AM, CST

AUCTION LOCATION: At the Farmstead located 8 mi S, 4 mi E & ½ mi S of Oberlin



SELLER: GAUMER, INC.
NE/4 OF 16-4-28
Selling in 2 tracts & combo

TRACT 1: 7.0± ac w/improvements
TRACT 2: 153.0± excellent cropland acres
Excellent for farm headquarters or hunting retreat!

MIKE BAILEY, LISTING AGENT

800 ACRES CROPLAND
LAND AUCTION
LOGAN COUNTY, KANSAS
FRI. FEB. 4, 2011 @10:30 AM, CST

AUCTION LOCATION:
Community Room in Courthouse
basement - Oakley

SELLER: Estate of Marlin D. Leonard

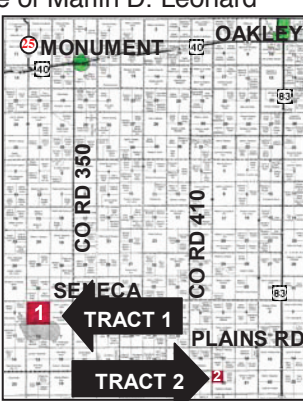
Land will sell in 2 individual tracts
Legal Descriptions:

TRACT 1: All of Section 1-13-34

TRACT 2: NW/4 of 20-13-32 - All in wheat w/landlord's 1/3rd share going to the Buyer.

LOCATED IN AREA OF NEW OIL PRODUCTION!

Minerals are 100% intact and go to the Buyer!



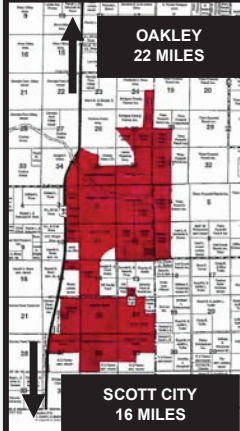
INTERNET BIDDING AVAILABLE!

JUST LISTED

8,260 ACRE GRASS RANCH
(Formerly "Krebs Ranch")

Located on Hwy 83 between Oakley & Scott City, Kansas

--Immediate possession
--Good grass
--Pipelined water
-- Well fenced
-- Excellent access



Call Don for a tour OR visit the web for more information!

LAND AUCTION

800 ACRES CRP & GRASS
WICHITA & WALLACE CO, KS &
CHEYENNE CO, COLORADO
Fri. Feb. 18, 2011 @ 10:30 AM, MST

AUCTION LOCATION:

Parish Hall, Sharon Springs

Sellers: Joan Holmes & Carol Patterson

TRACT 1: NE/4 of 6-17-37, Wichita Co
TRACT 2: SE/4 of 32-14-38, Wallace Co
TRACT 3: N/2 of 32-14-38, Wallace Co
TRACT 4: NW/4 of 2-13-46, Cheyenne Co, CO

100% OF 2011 CRP PAYMENTS GOING TO BUYER(S) - CHECK WEBSITE FOR PAYMENTS AMOUNTS

INTERNET BIDDING AVAILABLE!

OTHER UPCOMING AUCTIONS

02/22/11 - 340 ac grassland, CRP & mineral rights just N of Hays - for Diamond P Trust and Wilson Farms
03/19/11 - Doyle B. Schoen Trust Farm Machinery Auction - Lenora - CONSIGNMENTS WELCOME!!
03/26/11 - Spring Consignment - Call in your items early!!

CHECK OUR WEBSITE FOR ADDITIONAL LISTINGS & VIRTUAL TOURS!

"When you list with Farm & Ranch, it's as good as SOLD!"



1055 S. Range
Colby, Kansas
785-462-8255

GREAT CASH FLOW



111 W. 3rd, Oakley, KS
10,000' w/ excellent tenant
Call Rock today!!!

MAY BE LEASED



1675 W. 4th
6,000' office + 4,500' warehouse
Give Pat a call today!!!

COMMERCIAL LOT 6.7 ac. adjacent to Wal-Mart with I-70 frontage, Colby, Kansas. \$670,000. Call Rock!
INDUSTRIAL LOT 3.36 Ac. just off of I-70 Exit 53, Colby, KS Great building location! (SOLD)
LOCATE to Colby's fastest growing Commercial area! I-70 frontage, 2-6 acre lots. Call Marilyn!
410 N. Franklin Ideal office location, open floor plan, and newer roof. Possible financing or lease. Call Pat!
1200 W 4th Colby, KS Very well established & turn key business. \$195,000!!! Call Tom!
1690 W. 4th \$160,000 Dental care office with over 2,100 sq. ft. Very well maintained! Call Marilyn today!

SOLAR EFFICIENT!



955 Prairie View
A must see! 3 bdrm/2-1/2 bath
Call Pat for your tour!!!

COUNTRY CHARM



540 WOOFER AVE.
3 bdrm/3 bath—great floor plan
Call Pat today!!!

OPEN HOUSE

SUNDAY 3:00 - 4:30



431 Smith Dr.
5 bdrm/ 3 bath Split-level home.
Call Toni or Tom today!!!

SMALL-TOWN LIVING



101 S. Adams, Grinnell
4 bdrms, 2 1/2 baths. Location!
Give Jerry a call today!

\$7,000 ALLOWANCE



310 S. Garfield \$135,000
5 bdrm/3 bath. Room to grow!
Give Marilyn a call!!!

\$2,000 ALLOWANCE/ CLOSING COSTS



570 S. Grant \$54,000
3 bdrm/1 bath single level home
Call Marilyn to view today!

Inventory is low - WE WANT YOUR HOMES & COMMERCIAL LISTINGS. Give us a call and let our team of experienced realtors provide you with a free market analysis. HOMELAND- A TEAM WORKING FOR YOU!

114 S Pennsylvania, Jennings	\$30,000
728 S. 9th, Oakley	CONTRACT
411 Illinois, Brewster	\$45,000
101 S. Adams, Grinnell	\$50,000
570 S. Grant	\$54,000
410 Converse, Oakley	\$55,000
326 Freeman, Oakley	NEW \$59,000
765 S. Range	\$65,000
105 S. Illinois, Selden	\$69,000

1320 W 5 th	SOLD
1125 Brookside Dr.	CONTRACT
605 Longview, Oakley	\$79,500
1385 W. 1 ST	CONTRACT
540 W. 4th	\$85,500
725 Cherokee Dr.	\$92,000
210 W 5 th	\$96,000
685 W. Cherry	CONTRACT

460 W 4 th	CONTRACT
180 E. Cherry	SOLD
310 S. Garfield	\$7,000 Allowance!!
404 Smith Dr.	\$179,500
431 Smith Dr.	NEW \$191,500
955 Prairie View	\$197,500
540 Woofter	LOWERED PRICE
328 Maple, Oakley	Dreamer's Delight

LAND LISTINGS - NEW!!! 160 Ac. prime Thomas Co., KS irrigated. 1 mile S of Gem, KS. Immediate poss. \$5,000/Acre. NEW!!! 146 ACRES THOMAS COUNTY, KS irrigated with 5 year cash lease. 7miles North & 1 mile West of Rexford, Kansas. (UNDER CONTRACT) Call Rock L. Bedore 785-443-1653
33.3 ACRES THOMAS COUNTY land. Highway 83 frontage. Ideal business location on the North edge of Oakley, Kansas. I-70 within 5 miles. (Can be split.) Call Jerry! 785-672-0429

WE WANT YOUR LAND LISTINGS - WE SELL!!!

Join the Sellers that list with HomeLand Realty & Auction
Your Home, along with many other listings, will be viewed nationally.

Pat Sloan 785-443-3261
Marilyn Meyer 785-462-2703
Toni Lindberg 785-443-4032

www.HomeLandRE.com
office@homelandre.com

Rock L. Bedore 785-443-1653
Tom Harrison 785-443-0136
Jerry Wycoff 785-672-0429

The government wears many hats. We put them all in one place.



Looking for one place to get fast answers to your questions about government benefits and services? USA.gov is your official source for all federal, state and local government information. Now that's something you can hang your hat on.

