



MARIAN BALLARD/Colby Free Press
Farm equipment makes up a large number of the entries in the Thomas County Fair Parade. Entries include newer farm implements from local equipment dealers and these classic tractors from collectors. This year's parade will be at 5:30 p.m. Tuesday, July 26, down Franklin Avenue to the fairgrounds.

World War II veteran to serve as grand marshal

Dale Deaver, Levant, was born April 8, 1925, to Lawrence and Anna Blau Deaver in Russell Springs. He grew up in a family of four boys and six girls and attended school in Russell Springs.

On Aug. 18, 1943, he was drafted into the Army Air Corps and served until he was honorably discharged June 22, 1945. Deaver was based in England and served as a B-17 nose gunner over Germany.

On Oct. 3, 1946, he married Minnie Tubbs, a Thomas County resident, and they made their home in Levant. He has lived here ever since, purchasing his first piece of land in 1965, which he still farms today.

The Deavers have one daughter, Cathy Wieland, who lives in Colby. She and her husband

Scott have two daughters, Coleena (John) Woods of Colby and Karen (Nels) Lindberg of Great Bend.

Deaver began custom harvesting in 1959, traveling from Oklahoma to South Dakota each summer and to southwest Kansas in the fall. He still cuts his own wheat and is always ready to help friends and neighbors get their crops in.

Deaver and his wife spent their winters in a motor home, traveling to Texas, Arizona and Florida. She died in February, 2005, after 59 years of marriage.

He is a member of the Veterans of Foreign Wars and American Legion clubs, and spends countless hours helping with Sunday evening bingo and Wednesday steak fries.

Fun facts about the fair

The racetrack in front of the Thomas County Fairgrounds grandstand was built in 1928 and was originally a half mile track. It had a ball diamond in the center.

A horse shed was built at the west end of the race track with 50 stalls for race horses.

Next to go up was the hog barn, built to house 50 animals, followed by the poultry building, large enough for 200 coops.

A Works Progress Administration project in

1935 put up a new grandstand that would hold 2,000 people.

The original hog shed was built to house 50 head of hogs.

A sod house was built on the grounds in 1932 and used as fair headquarters for many years.

Opening night of the fair in 1932, the first lights at the grandstand were turned on and Colby held its first night baseball game.

*Come join us at the
2011 Thomas County
Free Fair*



COLBY
FREE PRESS

155 W. FIFTH ST. • COLBY, KAN. • 785-462-3963



Meadow Lake Golf Course

Come join is at our fair!

Our kitchen is OPEN
Monday - Saturday
5 p.m. - 9 p.m.

*Open to the Public
Everyone is Welcome!*

SATURDAY NIGHT IS PRIME RIB



785-460-6443
1085 E Golf Club Rd., Colby

**Enjoy the 2011 THOMAS
COUNTY FAIR!**



**& Home
Furnishings**

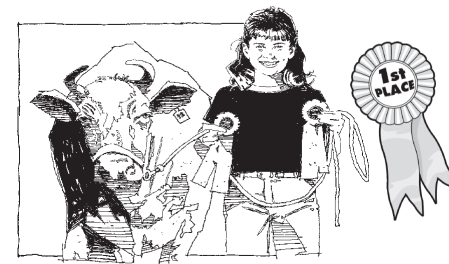
Monday-Friday: 8:00-5:30 Saturday: 9:00-2:00

960 South Range
Colby, KS 67701

(785) 462-2222

FAX: (785) 462-2262

*Good luck to all
involved in the fair!*



CASE III

COLBY AG CENTER, L.C.

TEL: (785) 462-6132

FAX: (785) 462-6740

305 E. Horton Ave

COLBY, KS 67701