

ALISHA KLIPPERT



I plan to attend Colby Community College.
Parents: Jeff and Becky Klippert

ASHLEY KLIPPERT



I plan to attend Colby Community College.
Parents: Jeff and Becky Klippert

BAILEY KOERPERICH



Life with you is always a BLAST! We love you tons and are super proud of you.

Love Dad, Mom, Ian, Piper and Eli

I plan to attend Fort Hays State to major in chemistry then University of Kansas medical school.

Parents: Buzzy and Cris Koerperich



J & B Meat Market
1996 S. Range * Colby, KS
785-460-0414

Peoples State Bank



100 S. Range Ave • Colby, KS
785-462-2224



2148 County Road Q
PO Box 468
COLBY, KS 67701



J & B Meat Market
1996 S. Range * Colby, KS
785-460-0414

Peoples State Bank



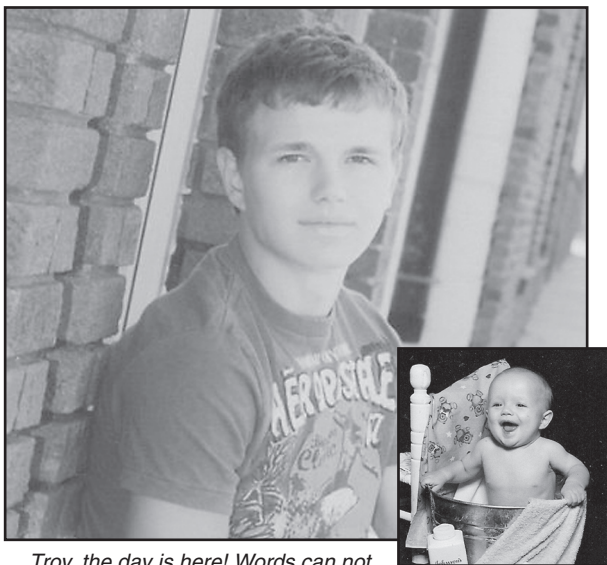
100 S. Range Ave • Colby, KS
785-462-2224

T.O. Haas Tire

RIGHT TIRE • RIGHT PRICE • RIGHT NOW

910 South Range • Colby
462-3957

TROY KOON



Troy, the day is here! Words can not express how proud we are of you. Here is to the next steps in your life, we wish you only the best as you take them.

Love you oceans,

Mom, Derek, Jessica, Courtney, Landon and Aden

I plan to attend Colby Community College for tow years.

Parents: Derek and Shannon Reilley
Ty Koon

MATTHEW LAMBERT



I plan to attend Colby Community College for two years then finish getting a bachelor's degree at Fort Hays State University.

Parents: Jim and Roberta Lambert



2148 County Road Q
PO Box 468
COLBY, KS 67701

ASHLEY LANNING



I plan to attend Colby Community College to obtain a degree in nursing.

Parents: Jason and Alicia Siruta
Travis Lanning



NW Solar Wind

785-443-3856
Colby, KS

northwestsolarwind.com



Farmers & Merchants Bank of Colby

Together... Making a Difference.



Member FDIC
240 W. 4th
460-3321