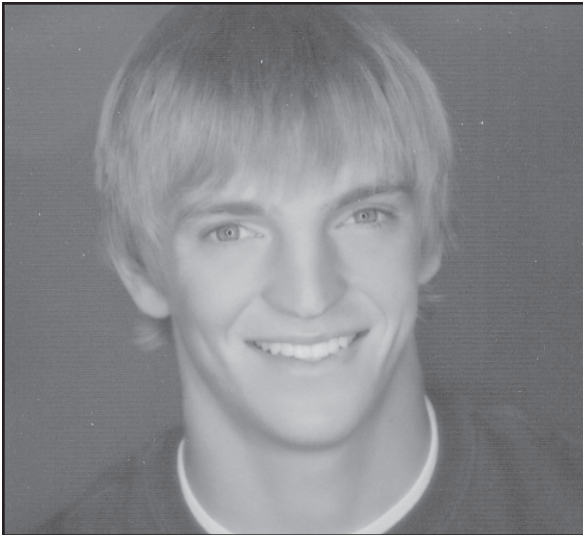


KALE ARNBERGER

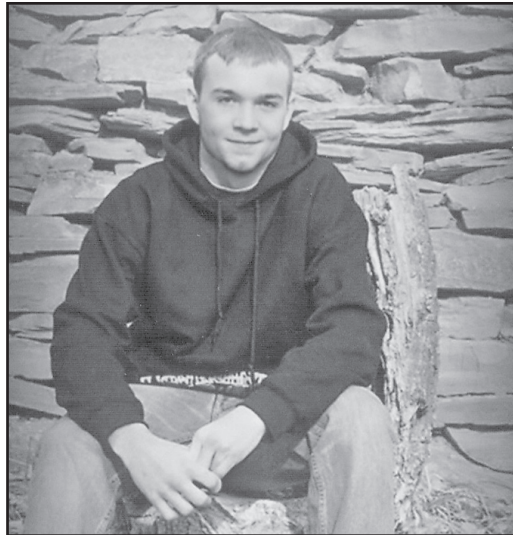


I plan to attend Kansas State University and major in kinesiology.

Parents: Blake and Kathy Arnberger

F&M
INSURANCE STORE
990 S. Range • 462-6779

JORDAN BAKER



I plan to enter the work force.

Parents: Tresa Baker

CORNERSTONE
AG
2148 County Road Q
PO Box 468
COLBY, KS 67701

BRITTANY BANGE



I plan to attend Kansas State University with a major in marketing and minor in graphic design and leadership.

Parents: Paul and Tawnia Bange

FARM CREDIT
OF WESTERN KANSAS
1055 S. Range Ave.
Colby, KS 67701
785-462-6714

AMANDA BARNUM



I plan to attend Colby Community College for two years, then Fort Hays State University and major in math.

Parents: Scott and Jan Barnum

HORLACHER
JEWELERS
442 N. Franklin
Colby, KS 67701
(785) 462-2241

TERESA BASSET

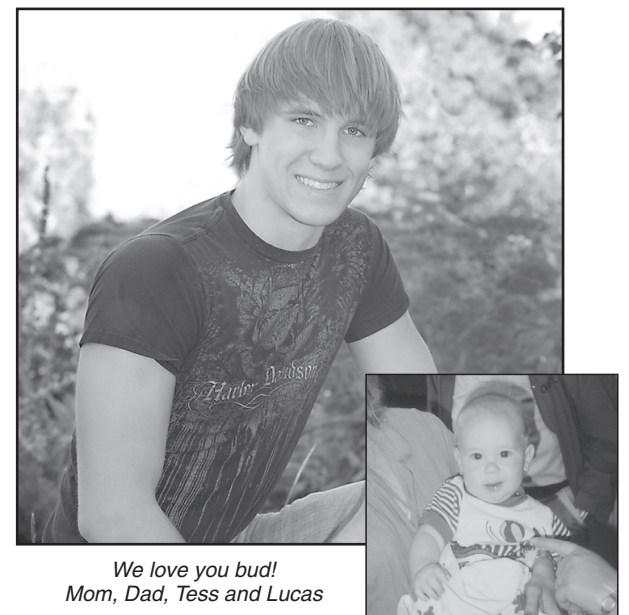


Teresa is a foreign exchange student from Germany. She plans to continue her education in Germany.

Parents: Manfred and Marianne Basset
Tod and Jessica Hileman

Tubbs & Sons Ford Sales
Colby, KS
810 S. Range • Colby, KS
785-460-6746

DRYDEN BAUMFALK



We love you bud!
Mom, Dad, Tess and Lucas

I plan to attend Colby Community College.
Parents: Gary and Yvonne Baumfalk

GAVON'S ELECTRONICS Peoples State Bank
RadioShack
You've got questions. We've got answers.SM
1870 S. RANGE 460-6601 COLBY
PSB
100 S. Range Ave • Colby, KS
785-462-2224