



10 pages

COLBY FREE PRESS

75¢

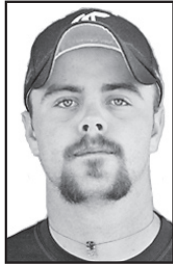
Friday

June 25, 2010
Volume 121, Number 99
Serving Thomas County since 1888

Colby college grad killed in Russell

By Kevin Bottrell

Colby Free Press
kbottrell@hotmail.com



Max Greve

A 2009 Colby Community College graduate was killed Thursday when two grain bins collapsed at an Agco Inc. elevator on the north side of Russell.

Max “Bud” Greve, 21, who attended the college from 2007 to 2009, was found dead along with Sean Banks, 19, of Russell, at 3:30 p.m. Thurs-

day, a spokesman for the Kansas Highway Patrol said. They had been missing since the collapse at 2 p.m.

The two men had been unloading a wheat truck when the bins collapsed, burying them in grain.

Trooper Tod Hileman of Colby said the cause of the collapse has not been determined, but officials say the collapse was structural, not the result of a fire or explosion.

Greve, from Wakefield, Neb., was a right-handed pitcher for the Trojan baseball team, earning several wins as both a starter and reliever. Coach Ryan Carter said he was well-liked on the team.

“He was a great kid, a very hard worker and extremely nice,” Carter said.

Greve studied business agriculture at Colby before attending Fort Hays State University. Carter said he had planned to play baseball at Hays.

The coach said a Facebook memorial page has been set up for Greve.

Hileman, who does road patrol and works part-time as a public information officer, said the Russell Police Department was in charge of the scene with sheriff’s deputies and troopers assisting. He said engineers from the U.S. Occupational Safety and Health Administration regional office in Wichita will be investigating.

Gov. Mark Parkinson put out a statement of condolence late Thursday.

“My thoughts and prayers go out to the families of those who died in today’s

grain elevator collapse,” he said. “State agencies continue to monitor the situation and stand ready to provide appropriate state resources should they be needed.”

Dan Bernard, Agco’s general manager, also made a statement.

“This incident is a tragic loss,” he said, “and on behalf of the board of directors, management and fellow employees we extend out sincerest sympathy and heartfelt condolences to the Greve and Banks families.”

Candidates file for 2010 races

The filing period has closed and Thomas County voters from both parties will have a lengthy ballot for the 2010 primary, with national, state and local officials up for election.

The best primary races seem to be the Republican contest for state representative in District 121, where a Goodland woman is challenging the incumbent, and for Congress in the 1st District, where six GOP candidates want to succeed Rep. Jerry Moran.

Polls will be open from 7 a.m. to 7 p.m. Tuesday, Aug. 3, at the Colby Community Building. Early voting will be available until July 30. Call or mail the Thomas County clerk’s office at the courthouse to request a ballot by mail.

The last day to register in time for this primary is Monday, July 19.

Brenda McCants of Goodland and incumbent Jim Morrison of Colby will square off for the Republican nomination to the Kansas House of Representatives. No Democrats filed for the primary, so whoever wins the Republican nod would be the likely winner in November.

Two county officials are up for re-election: District 1 County Commissioner Byron Sowers and Register of Deeds Lora Volk. Both have filed for re-election and neither has a primary challenger. No Democrats have filed for either office.

District 1 covers all of Thomas County east of K-25, excluding

ELECTION
2010

Colby.

Voters will also be electing several township clerks. Democrat Gary K. Ostmeyer filed in South Randall along with Republicans Loren Guill, Menlo; Pat Tinkham, Barrett; Travis Elias, North Randall; and Dee Olson and Marshall Rhea, Summers.

Assistant Deputy Clerk Kristi Mann said only voters within each township vote for their clerk.

Each party will elect precinct committee members by wards in Colby and for the townships. Those on the ballot include:

Democratic Party: Ward II – Maurice L. Sloan and Rosalie Seemann; Ward IV – Linda L. Murray; and Wendell Township – Helen M. Poland, Gem.

Republican Party: Ward I – Stephen Myers and Kathy J. Myers; Ward II – Sheila Frahm, Kenneth Frahm, Joshua W. Faber and Ronda Faber; Ward III – Michael (Mike) W. Brown and Jeanene B. Brown; Ward IV – Paul M. Steele, Jerilee Shuman and Shelly A. Harms; West Hale – Brenda Claassen and Mike Baughn, both of Brewster; South Randall – Ruth Clark and Will Clark, Oakley; East

See “RACES,” Page 3

Knee high by the Fourth of July?



KEVIN BOTTRELL/Colby Free Press

Dark green corn provides some high contrast this time of year to the golden wheat in Thomas County fields. Knee high by the Fourth of July is normal for corn, but what isn’t normal is corn that’s ankle high and some that’s shoulder high on the same day. Jon Friesen, who farms in several directions in Thomas

County and beyond, says he has fields in various stages, but that overall, the crop looks good, and he believes it to be doing just what it’s supposed to. Friesen was in the field Friday putting down a final spray in some fields that will be too big to get a machine into in a couple of days.

Lawyer, pilot campaigns here

By Kevin Bottrell

Colby Free Press
kbottrell@nwkansas.com

Marck Cobb, a lawyer, former Air Force lieutenant colonel and candidate for the U.S. House of Representatives, talked economy, health care and national security during a campaign stop in Colby on Thursday.

Cobb said he stopped in town to meet with business people and reporters as well as visiting the courthouse. He also dropped off a copy of his book, “Uncommon Sense,” which he describes as “a few words of wisdom” he wrote for his son.

Cobb he has been enjoying the campaign. He has minimal staff, acting as his own campaign manager. His son, a student at Wichita State Uni-

versity, often accompanies him. Cobb said he wants to lead by example, spending more time campaigning and less money on ads.

Cobb said he has been to most every county, and said he finds many people are just getting interested in the upcoming election.

In his 20-year career with the Air Force, Cobb said, he flew 143 combat missions in southeast Asia with refueling tankers. He served as an air attache at the U.S. embassy in Russia, helping negotiate a 1981 air flight treaty between the U.S. and Soviet Union. He last assignment was as deputy chief of long-term planning at the Pentagon in Washington. While there, he developed an Air Force plan that would be used in Operation Desert Storm, the first invasion of Iraq, just a few

See “CAMPAIGN,” Page 3



Marck Cobb

K-State summit talks groceries

MANHATTAN – In a small town, the presence of a grocery store can be an indicator of stability, and maybe even growth. Yet, in many rural areas, fickle consumers and competition from superstores are affecting the availability of food.

Rural groceries are finding it difficult to keep their doors open, said David Procter, director of the Center for Engagement and Community Development at Kansas State University, speaking at the Rural Grocery Store Summit at K-State on June 14.

He said 51 percent of Kansas communities now lack a grocery. As a result, he said, rural residents are finding it more difficult to buy fresh produce and other nutritious foods.

Many who have experienced the loss of a grocery, or who are concerned about the potential loss of the store in their town, shared their frustrations at the summit.

So, how to help rural grocery stores survive – and thrive?

The summit sought to address this issue in its session titled “Improving Access to Locally Grown Foods in Rural Grocery Stores,” which featured three speakers:

- Tracey Giang from the Food Trust gave examples of projects the group has undertaken, such as the Farmers Market Program, which started more than 30 farmers’ markets in underserved areas of Philadelphia. Giang said that this project and others like it could be applied to rural areas.
- Pete Garfinkel from the Kan-

sas Rural Center discussed a project which will work like an online brokerage system and link farmers and ranchers with people or businesses that want to purchase local foods in their areas.

• Becki Rhoades from the Kansas Department of Commerce commented on the benefits stores can receive from buying and selling “Simply Kansas” products. Simply Kansas membership offers benefits to store owners, including eligibility for a Business Enhancement Grant for marketing development.

The session was one of many included in the day and half conference in Manhattan, which was organized by the Center for

See “SUMMIT,” Page 3

Briefly

Hospital plans childbirth classes

Citizens Medical Center will offer a four-week series of childbirth education classes from 7 to 10 p.m. Thursdays starting next week. Women who are due to deliver before October should attend with their labor support partner. The next classes will begin Oct. 7. For information or to register, call Jeanene Brown at the hospital Education Department at (785) 460-4850.

Garden needs gardeners

Colby’s community garden is looking for volunteers. The plot, at the K-State Experiment Station on the west side of town, needs volunteers to help grow fruit and vegetables. Food produced by the farm will go to the Genesis-Thomas County food bank and the Extension Kids A Cookin’ program, as well as to the volunteers. For information, call Orvella Romine at

460-8177 or Extension agent Clint Milliman at 460-4582.

Picnic, music Wednesday

Colby’s Picnic in the Park lunch-and-concert series continues at noon Wednesday at Fike Park with entertainment by Pieces of 8. For information, call the Colby/Thomas County Chamber of Commerce at 460-3401 or the Colby Convention and Visitors Bureau at 460-7643.

Club plans races at church

The First Baptist Church RC Club will hold races starting at 2 p.m. Sunday at the church. Everyone is welcome, and the club has cars available. For information, call Kent Higerd at 462-2867.

Heartland selling fireworks

Heartland Christian School will be selling fire-

works at the Colby Livestock parking lot on Country Club Drive from 11 a.m. to 9 p.m. from Monday through Sunday, July 4. All proceeds will go to the school. For information, call Ronda Myers at 462-7727 or 443-1384.

Museum plans family show

The Prairie Museum of Art and History will put up a special exhibit from Sunday, July 4, to Saturday, July 10, featuring brief histories and photos of the Carpenter and Owens families of Thomas County. Paintings and porcelain dolls made by Pearl Carpenter will be on display, as well as a family signature friendship quilt. The public is invited to an opening reception from 2 to 4 p.m. July 4 at the museum. For information, call 460-4590.

Crews fogging for mosquitoes

Colby city crews are fogging for mosquitoes,

south of Webster on Mondays or Tuesdays and north of Webster on Thursdays. You can help, officials say: check your yard and empty anything holding stagnant water, such as cans, swimming pools or tires. For information, call the Public Works office at 460-4420.

Foundation has money to give

The Thomas County Community Foundation is accepting applications for its second quarter cycle. Nonprofit, government or school agencies in Thomas County are eligible for small grants of about \$500. Applications are due by Wednesday. For information, call 460-9152.

