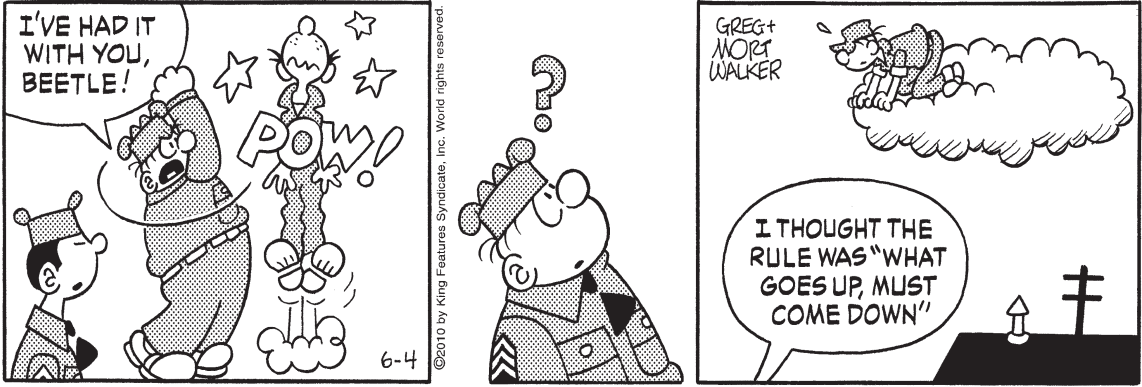


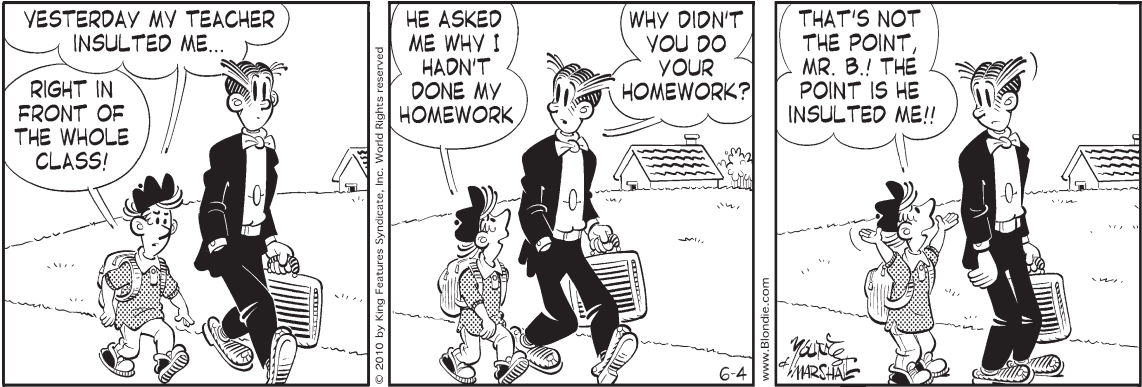
Baby Blues • Rick Kirkman & Jerry Scott



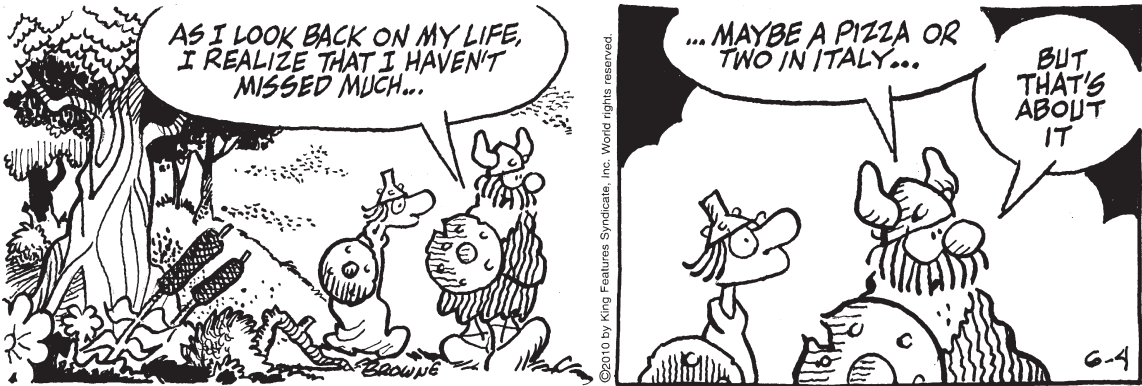
Beetle Bailey • Mort Walker



Blondie • Chic Young



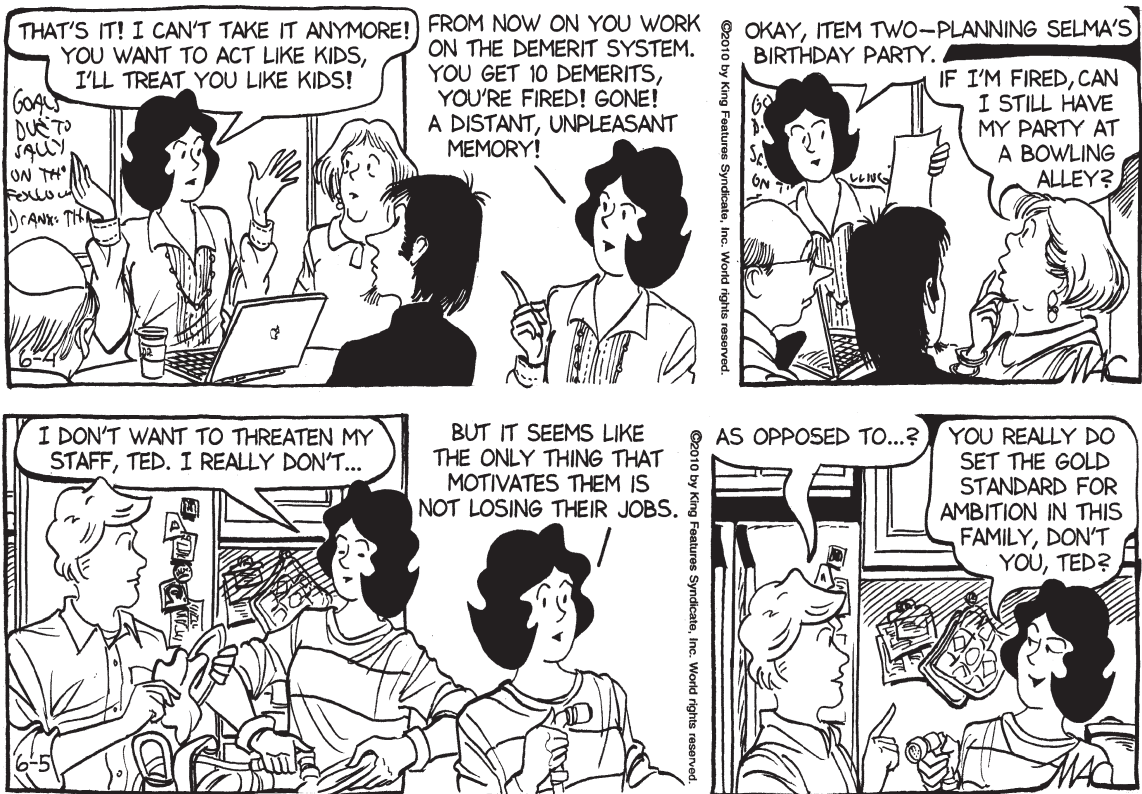
Hagar the Horrible • Chris Browne



Mother Goose and Grimm • Mike Peters



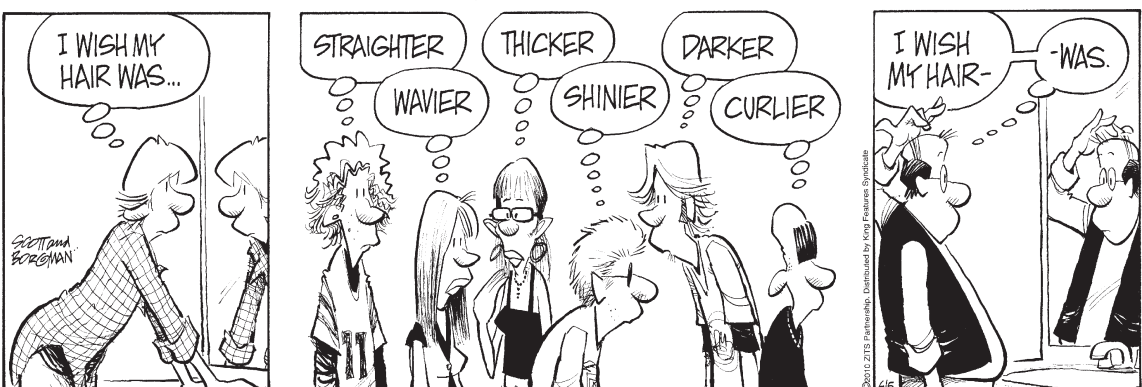
Sally Forth • Greg Howard



Todd the Dinosaur • Patrick Roberts



Zits • Jim Borgman & Jerry Scott



Heloise

- Hints from Heloise

Wash sizing from new sheets

Dear Heloise: Why do new sheets say to “wash before using”? I recently purchased NEW SHEETS and did not see this until they had been used. Does not washing them prior to use cause the sheets to pill or get balls on them or wear out faster?

I enjoy your column in the Bluefield (W.Va.) Daily Telegraph. – Carolyn, via e-mail

Carolyn, bedsheets may be treated with chemicals (sometimes called sizing) in the manufacturing process to help the fabric look smooth, pressed, crisp and appealing to the eye.

The chemicals are not to blame for pilling and do not affect the life span of the sheet. Pilling is a result of lower-quality sheets with short threads, or of abrasion during washing and drying.

Most manufacturers do recommend washing the sheets before use to remove the sizing. A second and third wash and rinse can't hurt.

It's a good idea to wash sheets and clothing before use anyway, so you will know how they stand up to laundering. – Heloise

P.S.: Buy the best-quality linens you can afford, launder them properly, and they will last a long, long time!

LIQUID MEASURE

Dear Heloise: Love your column each day, and thought I would send a hint that perhaps will help others.

On the containers you use a lot that measure liquids – like the one for iced-tea makers or measuring cups for bleach or washing-machine detergent – I take a black permanent marker and draw a line on the correct level. This way, when filling it up with liquid, it makes it a lot easier to see. – Kathryn G. from Mississippi

FABULOUS SCRUBBER

Dear Heloise: The orange mesh bags that onions come in make fabulous scrubbers for all pans, but in particular for use on nonstick pans for which metallic pads may not be used. -- Anne, via e-mail

CANDLE STUBS

Dear Heloise: I always save candle stubs and dripped wax to melt down and make more candles.

Candle stubs also are good to lubricate sticky drawers. Just rub the stubs of candles along the rails where the drawers slide. Scented candles can still give out their scent if placed in candle warmers, even though they can no longer be lit. I used to worry that I might forget and leave the house with candles burning. Then I had an idea. I now hang a very large kitchen spoon on the door-knob of the front door. It's impossible to walk through the door without hearing the clanging of the spoon, and it's a good reminder to snuff out the candles. – Lee Steup, via e-mail

(c)2010 by King Features Syndicate Inc.

Bridge • Steve Becker

You are South, both sides vulnerable. The bidding has been:
West 1 ♦ **North** Dble **East** 1 ♥ **South** ?
What would you bid with each of the following five hands?
1. ♠ A74 ♥ KQ72 ♦ 9 ♣ KJ532
2. ♠ AQ42 ♥ 105 ♦ 83 ♣ AQ964
3. ♠ J8 ♥ K93 ♦ QJ74 ♣ Q873
4. ♠ QJ8753 ♥ Q72 ♦ 6 ♣ AJ6
5. ♠ Q8 ♥ K7 ♦ Q953 ♣ KJ952

Bidding Quiz

1. Double. Something is rotten in the state of Denmark. When you have 13 high-card points and everyone at the table bids before you've had a chance to open your mouth, you should suspect chicanery of some sort. In this case, the easiest way to tell partner you have a good hand -- as well as good hearts -- is by doubling. This is a penalty double and warns partner that East may not have the hearts he's saying he has.

The bidding is unlikely to die at one heart doubled, but, whatever happens next, you should be firmly resolved either to get to game or to exact a suitable penalty from the enemy. You must have faith in partner in situations like this -- unless past experience has taught you that partner is not to be trusted, in which case you'll have to do some high-powered detective work to try to figure out who's telling the truth.

2. Two hearts. The bidding here is probably on the level, with East holding a weak hand and long hearts. Again you should feel certain of game, and the best way of indicating this is by cuebidding hearts. Your final resting place depends on partner's response to the cuebid. If he bids spades or clubs, you will raise him to game; if he bids two notrump, you will carry on to three. If, by any chance, your partner passes two hearts, get yourself a new partner.

3. One notrump. You can't pass with nine points, and because of your flat distribution and strength in the opponents' suits, you make the bid that comes closest to representing your distribution and point count. A two-club bid would suggest distributional values you don't have.

4. Four spades. Here, opposite partner's take-out double, you should bid what you think you can make. Simplest is best.

5. Two notrump. Partner is likely to have the values you need to fortify your scattered strength, and a potential nine-trick notrump game is apt to prove far easier to manage than an 11-trick club contract. You have the values for a jump to three clubs, but this would be a misguided effort because it would not express the strong feeling you should have that your best prospect for game lies in notrump. The two-notrump bid is invitational; if partner has a dead minimum for his double, he can pass.

(c)2010 King Features Syndicate Inc.

Family Circus • Bil Keane



“I guess that’s why Grandma knows so many things.”

Conceptis Sudoku • Dave Green

		9		3		1		
	7						8	
4		1				2		7
			6		1			
2								3
			3		5			
9		8				3		6
	6						2	
		7		1		9		

Difficulty Level ★★★★★

This is a logic-based number placement puzzle. The goal is to enter a number, 1-9, in each cell in which each row, column and 3x3 region must contain only one instance of each numeral. The solution to the last Sudoku puzzle is at right.

5	4	9	3	2	1	6	7	8
3	8	6	4	7	5	2	9	1
7	1	2	9	8	6	4	5	3
6	2	5	7	9	8	1	3	4
8	7	4	1	3	2	5	6	9
1	9	3	6	5	4	8	2	7
4	5	7	2	1	9	3	8	6
9	6	8	5	4	3	7	1	2
2	3	1	8	6	7	9	4	5

Difficulty Level ★★★

Cryptoquip

VAQB MWJ VKB KB R GKHB

SRBHJRHQ XLWDKYKQBYM

YWBPQGP, K HJQGG MWJ'FQ

EQDQRPQE QFQLMWBQ ARBEKSM.

Yesterday's Cryptoquip: IF YOU'RE UPPING THE ALCOHOL CONTENT OF YOUR DRINK, I RECKON THAT'S CALLED RAISING THE PROOF.

Today's Cryptoquip Clue: F equals V

Crossword • Eugene Sheffer

ACROSS
1 Humor
4 Con game
8 Wound cover
12 Stick in the water?
13 Big name in jazz
14 All that remained in Pandora's box
15 Sweaters and such
17 Stratagem
18 Restaurant employee
19 Venomous snake
20 Tier
22 Whirl
24 Erstwhile Peruvian
25 Deck
29 Army rank (Abbr.)
30 "____ of Two Cities"
31 To and —
32 Automatic, as a reaction

DOWN
34 Some-where out there
35 Crooner
36 Hum-dinger
37 Take it easy
40 Note to co-workers
41 Saharan
42 Hiker's burden
46 Swampy area
47 Multi-national coin
48 Payable
49 Gets a glimpse of
50 Help illegally
51 Sun Yat —

19 Moral failing
20 Taste a lollipop
21 In due time
22 Trap
23 11th President
25 Record label in TV ads
26 Empties a truck
27 Caspian Sea feeder
28 British conservative
30 Trojan War hero
33 Ducks
34 Intends
36 Station
37 St. Louis team
38 Pennsylvania port
39 Old Italian bread
40 Paddock parent
42 Mauna —
43 Gist
44 Prompt
45 Barbie's companion

Solution time: 25 mins.

Yesterdays answer 6-4

1	2	3	4	5	6	7	8	9	10	11
12			13				14			
15			16				17			
		18					19			
20	21				22	23				
24				25				26	27	28
29				30				31		
32			33				34			
			35				36			
37	38	39				40				
41				42	43				44	45
46				47				48		
49				50				51		