

Classifieds

To place your classified ad, mail (155 W. Fifth), fax (785-462-7749), phone (785-462-3963), or stop by our office at 155 W. Fifth

Real Estate

Real Estate

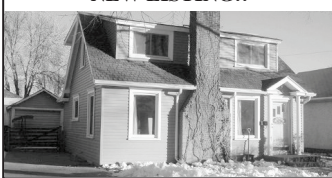
Real Estate



"Western Hospitality"
www.colbyhomeland.com

410 N. Franklin
785-462-8255

NEW LISTING!!



"EXCLUSIVE"



FAMILY HOME



PICTURE PERFECT



"CHARMING"



Inventory is low – **WE WANT YOUR HOME.** Give us a call and let our team of experienced realtors provide you with a free market analysis as well as a personal marketing plan. HomeLand – **A TEAM WORKING FOR YOU!**

201 Penn. Jennings	\$10,000	460 W. 4 th	CONTRACT
130 Main-Rexford	\$45,000	905 S. Range	Reduced \$ 99,500
665 N. Mission	\$59,900	1473 Pioneer Dr.	\$117,500
620 W. 4 th	\$72,000	880 Thompson	\$129,000
665 W. 6 th	\$78,700	310 S. Garfield	\$135,000
995 S. Range	SOLD	1280 E. 8 th	\$165,000
465 Lawrence Dr.	\$81,500	194 Co Rd. 3	\$165,000
255 N. Garfield	\$98,500	1818 Harvey	"Unique"
El Chaparral	"Build Here"	2870 N. Range	"Exclusive"
		Cottonwood	"Great Site"

Join the Sellers that list with HomeLand Realty & Auction
Your Home, along with many other listings, will be viewed nationally.
Pat Sloan 460-7495 Marilyn Meyer 462-2703
Rock L. Bedore 462-6930 Jerry Wycoff 672-3763
speak to us at homelandre@hotmail.com



JUST LISTED!!

465 Lawrence Dr. \$81,500

3 bdrm, 1 bath ranch style home. Beautiful hardwood floors w/2 car attached garage. Recent updates both interior & exterior. Call Marilyn today for an appointment.

665 W 6th \$78,700

3 bdrm 2 bath beautiful 2-story English home. Living room w/fireplace. Hot tub on the balcony provides privacy & comfort. Low main. exterior w/siding & new windows. Call Pat to see.

2870 N Range \$189,500

5 bdrm 3 bath ranch home located on the edge of Colby. 2-car attach. & 3-car detach. garage. Finished basement w/wet bar & hot tub. Call Rock today.

1280 E 8th \$165,000

5 bdrm, 3 bath brick home with full finished basement and double car garage. Main floor utility. Wrapped windows, gables and eaves. A real treasure. Give Marilyn a call!!!

1818 Harvey Ct.

4 bdrm. 2.5 bath with a true master suite & walk-in closet. Full finished basement. Detached building has a finished loft. Has a deck, patio, sprinklers & more. Give Pat a call TODAY!!!

620 W 4th \$72,000

Beautiful oak wood floors, oak columns separating the formal dining & living room. Main floor laundry, large master suite, partially finished basement with a family room, bedroom & bath. Kids can walk to school. Call Marilyn.

Stock Realty & Auction Featured Property

New Listing



- Traditional Charmer
- 4 bedrooms, 2 baths
- 435 W. 4th \$87,900

New Listing



- Brick Home
- 4 bedroom, 2 bath
- 1035 N. Brookside \$117,000

"Offer"



- Low Maintenance Siding
- Yard Sprinklers
- 960 E. 9th \$59,500

New Look



- Large Sunny Rooms
- Attractive Deck
- 135 N. Garfield \$94,500

"Build"



- 4 Lots
- R-2 Zoning

Call Molly for details

MOLLY J. OLIVER
Residential
Specialist
462-6133 (res.)



STOCK REALTY & AUCTION CO.
390 N. Franklin, Ste. 100, Colby, KS 67701
www.stockrealtyandauction.com
785-460-SOLD (7653)

QUALITY LAND BROKERS & AUCTIONEERS

Just Listed



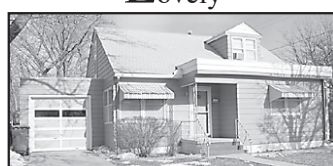
- Beautiful Home
- Great features
- 450 W. 5th \$115,000

Newer Listing



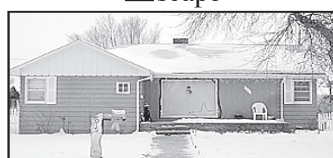
- A Perfect Home
- 5 bedrooms, 3 baths
- 1335 Lue Dr. \$199,500

Lovely



- A "Must See"
- Stylish and charming
- 655 W. Cedar \$68,500

Escape



- Cozy, comfortable
- Great location
- 915 Mentlick \$72,000

TAX CREDIT

Call Molly for details on Extended Home Buyer Tax Credit. You could qualify for \$8,000 or \$6,500 Tax Credit.

ENDS APRIL 30TH

FAX MACHINE SERVICE

available at

The Colby Free Press
\$3.00
FIRST PAGE

\$1.00
each additional page
Incoming pages
or outgoing

CALL 462-3963
FOR DETAILS
or FAX US AT
462-7749

Homeland Realty & Auction

NEW-3.3 Acres with 7,215 sq. feet building, close to Goodland Airport, 580 E. Armory Rd, Goodland, Kansas.
NEW-2.2 acres w/10,786 sq ft. building. 1/4 mile from I-70 @ 2886 Rd 64 Edson, KS. Ideal warehouse or manufacturing building.
NEW-160 ac. NW/4 12-8-42 dryland, good access W of Goodland, KS.

Call Tom Harrison 785-443-0136

Beautiful Ranch Style home located 15 miles South of Brewster, KS with full basement on 5.7 acres. (4 garage stalls) \$165,000.

640 Acres Logan Co cropland & grass SW of Winona, KS. Imm. Poss. (All 2010 wheat and FSA payments to Buyer) \$750/acre.

320 Acres Thomas Co irrigated NW of Rexford, KS. \$2,740/Acre.

PRICE REDUCED - 160 ACRES THOMAS CO Cropland located 1 1/2 miles West of Menlo, KS. Immediate Possession. \$1,400/Acre.

PRICE REDUCED - 160 ACRES THOMAS CO Grassland located 1 1/2 miles West of Menlo, KS. Immediate Possession. \$750/Acre.

140 ACRES THOMAS CO cropland w/ improvements & remodeled house Rexford, KS. 1/3 wheat to Buyer. **(UNDER CONTRACT)**

EXCELLENT BUILDING LOT located on Cottonwood Drive in Colby, KS. Beautiful mature pine trees with a prime location. \$39,000.

320 ACRES THOMAS CO. grassland 4 miles West 1/2 North. of Oakley, KS Immediate Possession. \$625/acre.

148 ACRES RAWLINS COUNTY Cropland and grass 4 1/2 miles North of Ludell, KS. Cash rents going to Buyer. \$811/acre. Call Pat 785-443-3261.

900 ACRES LOGAN COUNTY grass & cropland w/improvements located at Page City, KS. Beautiful 2 story home, barn, cattle working facility, quonset, grain storage and cattle feeding pens. \$990,000.

480 ACRES LOGAN COUNTY sprinkler irrigated land located 1 mi North of Page City, KS. 3 wells & 3 sprinklers. **(For sale or lease)** \$2,150/acre.

Call Rock L. Bedore 785-443-1653



PRICE REDUCED!!!!

1675 W. 4th Colby
6,000 sq. ft. office/retail building plus 4,500 sq. ft. warehouse with dock. Move-in ready. **Call Pat!!**



525 E. 4th
Very well established business located in Colby. Great clientele list. Just finished restocking inventory. **Call Marilyn!!**

COMMERCIAL DEVELOPMENT 6.7 acres adjacent to Wal-Mart with I-70 frontage. Located in Colby, Kansas. **Call Rock.**

INDUSTRIAL LOT in Colby's Industrial Area just off of I-70 Exit 53. Great building location. \$47,000. **Call Rock.**

LOCATE to Colby's fastest growing area. I-70 frontage, 2-6 acre lots. Join Colby Petro, Colby Implement and others. **Call Marilyn.**

RESIDENTIAL LOTS in El Chaparral. Has established trees and a domestic water well. Wonderful building site. \$23,000. **Call Marilyn.**

410 N. FRANKLIN—Ideal office location, low maintenance brick exterior, 1 year old roof & new sewer line. Interior has open floor plan, private office, break room and conference room.



410 N. Franklin
785-462-8255

Agents
Rock L. Bedore 785-443-1653
Jerry Wycoff 785-672-0429
Marilyn Meyer 785-462-2703
Pat Sloan 785-460-7495

www.colbyhomeland.com

LAND & COMMERCIAL Opportunities the Promise of Land.....

CRP – Cheyenne Co. 162 Acres NW4 6-1-41.

NEW CRP – Wallace Co. 148 Acres NE4 16-13-38. Comes out of program 9/10

UNDER CONTRACT – DRYLAND – Logan Co. 160 Acres SE 2-12-37

NEW GRASS AND FARMLAND – Wallace Co. 1440 Acres grass, 240 Acres farm ground under one fence. Nice unit!

FARMLAND, GRASS, BOTTOMLAND– Sheridan Co. 316 Acres N. of Grinnell. Nice improvements.

WE WANT TO SELL YOUR LAND!

If you are seriously considering selling your land, but have questions or concerns, contact Terry or Molly for a **no obligation market analyses.**

Stock's Full Team of "YELLOW SHIRTS" & Experience
want to handle your next Auction...
Call the "WE SELL" TEAM.

Check Our Website
www.stockrealtyandauction.com

Terry Stover: 785-626-2082 Molly Oliver: 785-462-5203
Ron Stock: 402-649-3705 Mark Stock: 402-276-2077



STOCK REALTY & AUCTION CO.
390 N. Franklin, Ste. 100, Colby, KS 67701
www.stockrealtyandauction.com
785-460-SOLD (7653)

QUALITY LAND BROKERS & AUCTIONEERS

FARM & RANCH REALTY, INC.

1977 – 2010

30+

YEARS OF

EXPERIENCE
EXPERTISE
EXCELLENCE



1420 W. 4TH – P.O. BOX 947
COLBY, KS 67701
785-462-3904

DONALD L. HAZLETT, Broker



DON HAZLETT

www.farmandranchrealty.com

WE INVITE YOU TO TALK TO ONE OF OUR REAL ESTATE PROFESSIONALS!

Naomi Ward • Steve Hazlett • Ron Evans • Ed Currier • Neal Mann • Mike Bailey • Scotty Legere

AUCTION SCHEDULE

1/26/10 – 800 ac Prowers Co, Colo & Hamilton Co, KS CRP, SE of Holly, CO on the Kansas/Colorado border – 2 individual tracts

3/16/10 – 1,360 ac Rooks County cropland –Palco/Plainville area selling in tracts & combos for Charlotte Desbien Estate

3/27/10 – Annual Spring Consignment Auction – East Lot

AG LAND

THOMAS - 320 ac irrigated cropland SE of Mingo – E/2 of 18-10-32 – 2 pivots, 2 wells, immed poss

GRAHAM – Country home in beautiful setting near the Solomon River – W of Hill City, 4.6 ac w/includes a modern home, 2-car garage, livestock shed and scenic views

WALLACE – 510 ac native grassland w/3 livestock wells – NW of Sharon Springs

*CHECK OUR WEB SITE FOR ADDITIONAL
PRIVATE TREATY LISTINGS!

COMMERICAL



1921 S. Range - \$199,500

8-UNIT APARTMENT COMPLEX
5th St & Martin -\$40,000

"When you list with Farm & Ranch, it's as good as SOLD!"

We're Open!

• Because of the flooding, we are working in the back room. The front door is open, but Fifth Street is closed. Parking is available on Chick or Franklin. Come to the front door, come on in, turn left and you'll find the "front desk."

• As always, customers are our priority at the Colby Free Press. We're here to serve you. Please pardon our mess.



COLBY FREE PRESS

Office hours: 8 a.m. to 6 p.m.
Monday to Friday.

155 W. Fifth St. • (785) 462-3963