

Settlers Day

Afternoon grandstand performances were free and included high wire acts, music groups and more races.

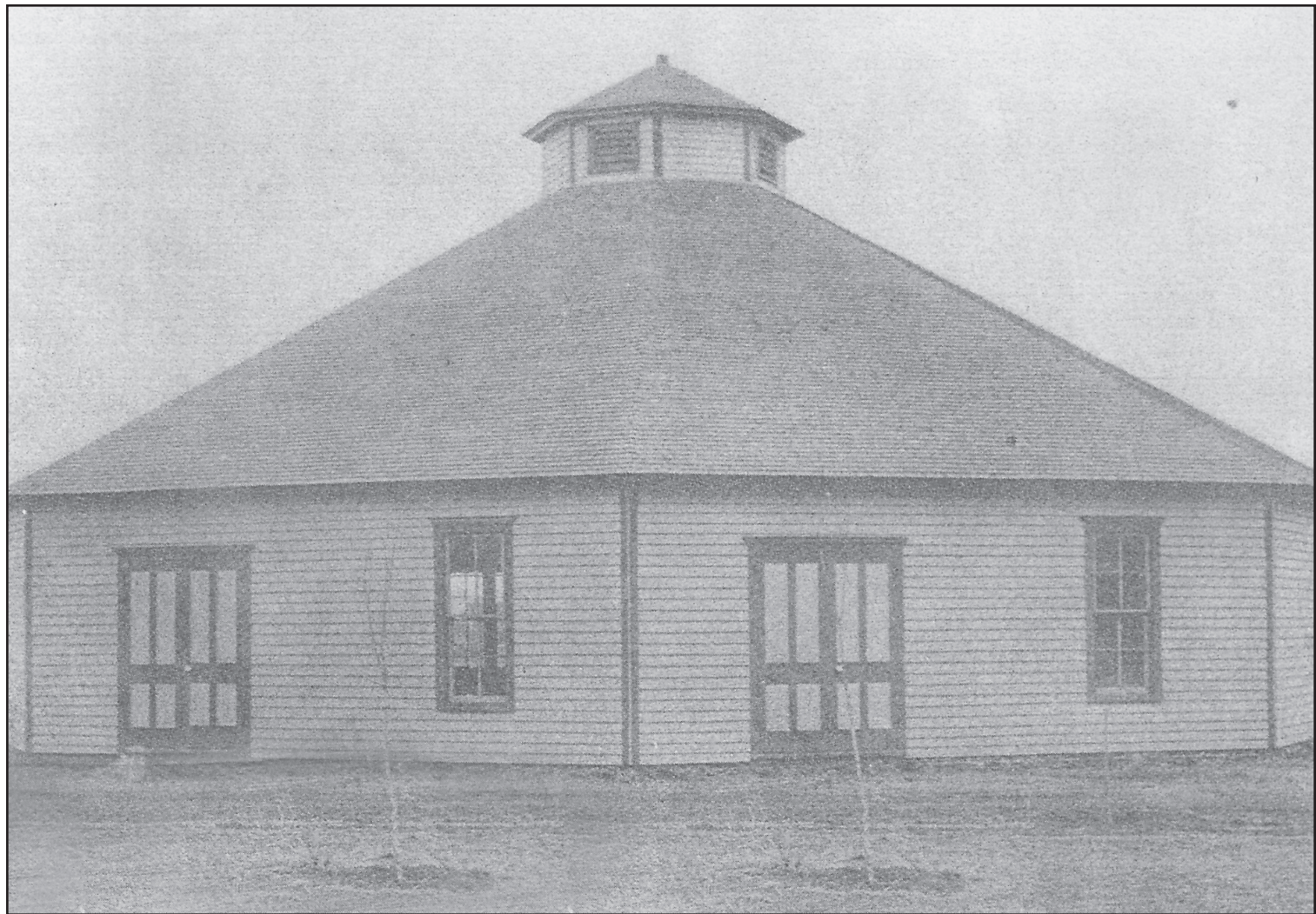
Jerry Foss recalls a time in the 1950's when he was an avid calf roper, roping with friends Gary Garrett, Mike Robbins, and Brent Phillips. The cocky young ropers decided to enter the Cowboy Relay Race, a mile long, in front of the grandstand during the fair, because of the size of the purse.

"It was a half mile track then," Foss said, "and there were six teams, so we each had to run a quarter of a mile. It was hot, and we hadn't practiced, but it paid \$1,000. We ran and we won ... I remember it like it was yesterday."

Maxine Jones also had memories of past fairs. Jones, now in her 80's, said she used to bake bread and pies and make jam and canned peaches to enter in the fair.

"It was a lot of work," she said, "but a lot of women did those things then. The kids were in 4-H, and I remember that I was working at Penney's part of the time, and one day when I wasn't home, my daughter, Brenda decided to make bread. She had watched me make bread many times, and when she took her bread to the fair, it got first prize. I guess she learned more than I thought she did.

"I would make fried chicken, and potato salad for our lunch, and we'd go to the fair and stay all day. Bud was head of the horse races for several years. Fairs were big then, but it was something the whole family did together."



Historical Society Photo
The 'Tabernacle', built in 1905 for church meetings for the Holiness church, was purchased in the 1920's by the Thomas County Fair Board to be used for fair exhibits. The unique octagonal historic building came under the fair board's axe in 1994.

Join us at the Thomas County Fair for the Demolition Derby!



T.O. Haas Tire

RIGHT TIRE • RIGHT PRICE • RIGHT NOW

910 S. Range • Colby, KS • 785-462-3957



**Welcome to
the Thomas
County Fair!**

**OPEN AT 6 A.M. AND
CLOSE AT MIDNIGHT**

1835 S. Range • Colby • 462-7138

ADAC

Alcohol & Drug Abuse Council

Thomas County Alcohol and Drug Abuse Council

Chemical Dependency Services

**WELCOME TO THE 2010
THOMAS COUNTY FAIR!**

**There is help.
You don't have to
do it alone.**

345 N. Lake St.
P.O. Box 100
Colby, KS 67701

(785) 462-6111
Fax: (785) 462-6385
1-800-794-3046

**HAVE A GREAT TIME
AT THE 2010 THOMAS
COUNTY FAIR!**

Make it a family affair and
attend the FREE BBQ on
Wednesday evening!



**The
Family Center
for Health Care**

310 E. College Drive
462-6184

