

# 2010 county fair schedule

## Saturday

9:30 a.m. – Open Class horse show – Small arena

## Sunday

1-5 p.m. – 4-H booth construction  
7 p.m. – The Gatlin Brother's concert – Large arena

## Monday

8 a.m. – 4-H booth construction  
9 a.m. – 4-H horse show  
11 a.m. - 4 p.m. – Open Class entries, all non-animal entries – 4-H building  
4:30 p.m. – Open Class entry judging  
5 p.m. – Mutton busting registration – Bucking chutes  
8 p.m. – KPR Rodeo – Large arena

## Tuesday

7:30 a.m. – 4-H livestock weigh-in  
11 a.m. – deadline for 4-H exhibit entry  
11:30 a.m. – 4-H exhibit judging  
2 p.m. – 4-H and Open Class cat, rabbit, hand pet and poultry show – Small animal barn  
5 p.m. – Mutton busting registration – Bucking chutes  
5:30 p.m. – Parade – Franklin Avenue  
8 p.m. – KPR Rodeo – Large arena

## Wednesday

8 a.m. – 4-H swine show and sheep and goat show  
11 a.m. – Antique tractor show – 4-H

building parking lot  
4 p.m. – Pedal tractor pull registration  
5 p.m. – Pedal tractor pull  
5:30 p.m. – Barbeque  
8 p.m. – Demolition derby

## Thursday

7:30 a.m. – Thomas County Community Foundation  
8:30 a.m. – 4-H dairy, bucket calf, breeding and market beef show  
1 p.m. – Flat track motorcycle practice races  
4 p.m. – Flat track motorcycle heat races  
5:30 p.m. – 4-H livestock sale and buyer's appreciation barbecue  
8 p.m. Flat track motorcycle main races

## Next Friday

9 a.m. – 4-H round robin  
2 p.m. – Livestock entries released, clean up of barns  
7 p.m. – F&M Insurance Summer Shootout races

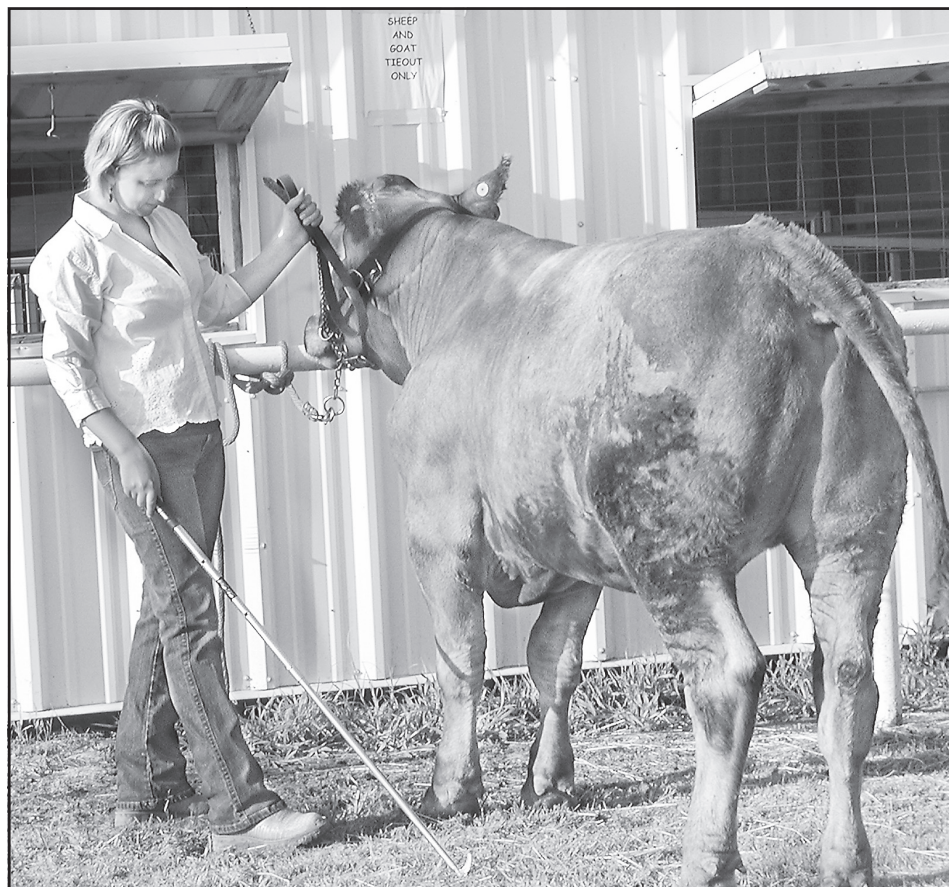
## Saturday, July 31

8 a.m. – all entries released  
7 p.m. – F&M Insurance Summer Shootout races

## Sunday, Aug. 1

5 p.m. - 7 p.m. – 4-H cleanup and end of fair celebration

## Waiting to go on



Emily Terrell took encouraged her market steer to step up before the 4-H Dairy, Breeding and Market Beef Show at last year's Thomas County Fair.

ANDY HEINTZ/Colby Free Press

## Thomas County Amusement Association Presents the Home-Owned Carnival!

July 27th - July 31st

### Ticket Booth Opens 6:30



### Carnival on the Midway 7:00 - 11:00 Nightly

### F&M Carnival Kick-off: Tuesday, July 29th

• 1/2 Price Wristbands (1st 100 People)!! Must come to Farmers and Merchants Bank's main bank location from 9 a.m. to 3 p.m. to pick them up. One per person. Must pick up in person.  
• At the ticket booth, the 1st 300 people that buy 20 tickets will get 5 tickets free.

**Saturday, July 31st:**  
**\$10.00 wristbands - all you can ride**  
**7:00 - 11:00 p.m.**

\*Does not apply to games.

## It's Just the Right Time to Buy a GE Freezer for your 4-H Beef!



UPRIGHT FREEZERS AVAILABLE IN 5, 12, 14, 15, 17, 20, 21 & 25 cu. ft.  
CHEST FREEZERS AVAILABLE IN 5, 7, 9, 10, 15, 17, 20, 22 & 25 cu. ft.  
Also available: Frost Free Models as well as Manual Defrost!



**Apply for a Card...**  
**on any appliance purchase**

**FREE** Interest for 12 MONTHS toward all appliance purchases. Minimum Payment with approved credit.

### GE & Maytag Appliances:

- Air Conditioners • Washers • Dryers • Refrigerators • Ranges • Dishwashers • Freezers



**FULL-TIME SERVICE DEPARTMENT**  
1170 S. Co. Club  
**462-2100**