

brand new exterior paint job and landscaping

(highweeler) automobile that was owned by Dr. A.C. Gulick.

The Holsman is on display at the museum resting across from another rare vehicle exhibit — a replica of the first patented American helicopter built in Goodland in 1909 by W.J. Purvis and C.A. Wilson. The full-size replica was built by the late Harold Norton

of Brewster in 1976 from plans and the only photo available.

The High Plains Museum is open 9 a.m. to 5 p.m. Monday-Friday (9 a.m. to 6 p.m. June through September); 9 a.m. to 4 p.m. Saturday; and 1 p.m. to 4 p.m. Sunday (May through September). All times are Mountain Time. The museum is closed on major holi-

days.

Established in 1959, the High Plains Museum is owned and operated by the City of Goodland. The museum's collection of over 8,000 objects lets adventurers of all ages discover the past for themselves.

Six HO-scale dioramas tell the stories of the Kidder Massacre in 1867 and of the early pioneer's struggle to survive in an often harsh environment. Permanent exhibits tell the story of the individuals and groups who have lived here — from the pioneer family in their soddie to the businessman in town.

Events like the depression, the dust bowl, rainmakers and the story of the early years of transportation are chronicled as well.

Directions to the museum

The High Plains Museum is located at the

corner of Cherry Avenue and 18th Street in Goodland.

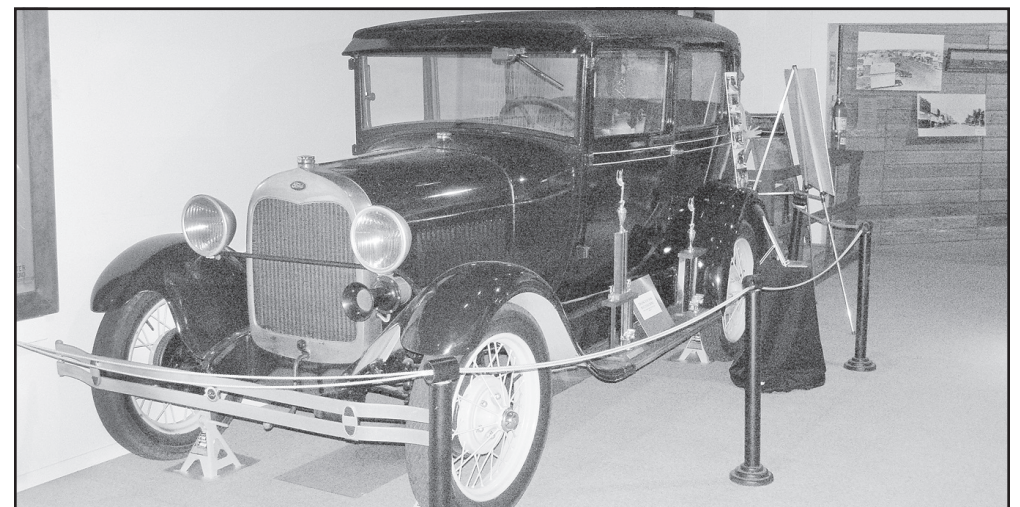
Visitors coming on I-70 driving west can take the east exit (Exit 19) and follow business U.S. Highway 24 around the curve then west to Cherry Ave. (where the Van Gogh painting and Pioneer Park are on either side of the Avenue. North on Cherry across the rail tracks and the museum is on the northeast corner.

Visitors driving east on I-70 can take the west Goodland exit (Exit 17). Turn north on Kansas 27 and drive north to the stop light at the intersection with business U.S. Highway 24. Turn east (right) on business U.S. Highway 24 and drive to Cherry Avenue Turn north at the corner after passing Pioneer Park. Drive north and cross the rail tracks. The museum is on the northeast corner of the street.



TOM BETZ/The Goodland Star-News

Back in the northeast corner of the High Plains Museum rests a rare 1905 Holsman Automobile built in Chicago and bought by Sherman County Doctor A.C. Gulick more than 100 years ago. Gulick made house calls in a horse and buggy when he first came to Sherman County, but about 1905 he purchased the Holsman Automobile, making him one of — or possibly the first — automobile owner in the county.



TOM BETZ/The Goodland Star-News

The 1928 Ford Model A is now housed in the High Plains Museum as one of the permanent exhibits about transportation.



Take Exit 70 or Exit 76 off I-70, Oakley, to see a 2 times greater than life size statue of Buffalo Bill Cody!

Check out our friendly Merchants, downtown Oakley!

"A Living Tradition of Community for over 100 Years."

100 Center Ave.
Oakley, KS
785-672-3251



Member FDIC

www.fsboakley.com



Welcome to
COLBY!



2005 S. Range, Colby • 785-462-6460

**OPEN:
10 A.M. - 10 P.M.**

Come check out our
daily specials!