

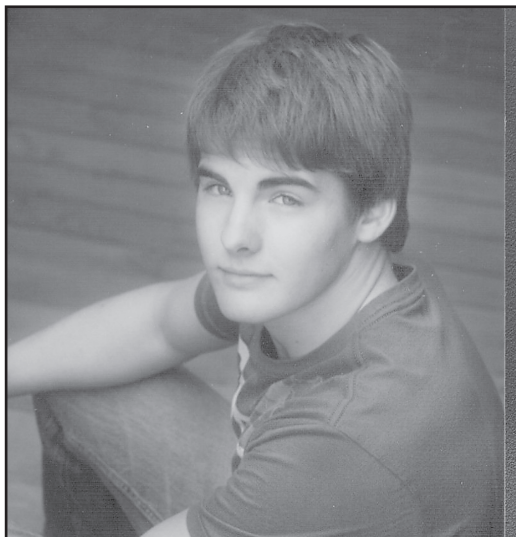
MICHELLE SCHROEDER



I plan to attend Emporia State.
Parents: John and Jeanne Schroeder

COLBY IMPLEMENT
 405 W. Horton • Colby, KS
 785-462-3391
 800-532-6529

ROBERT SCHROEDER



I plan to attend Colby Community College and then transfer to a 4 year university.
Parents: Robert and Jacque Schroeder

COLBY IMPLEMENT
 405 W. Horton • Colby, KS
 785-462-3391
 800-532-6529

ASHLEY SIMON



I plan to attend Colby Community College to major in business administration/accounting.
Parents: Raymond and Terri Simon

CHS 2122 US HWY 24
785-462-3546

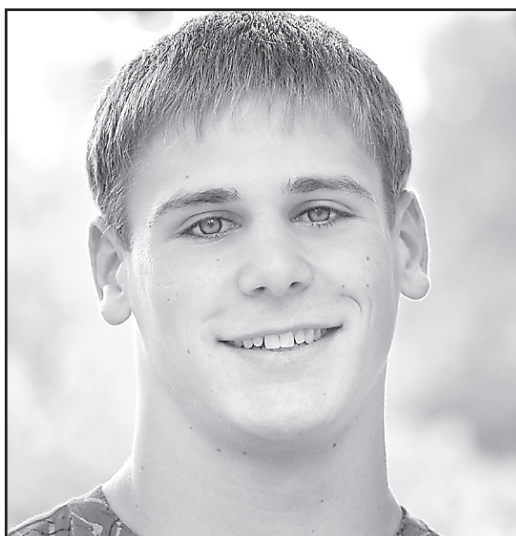
BRANDON STANDAGE



I plan to attend Colby Community College then transfer to K-State and major in ag business.
Parents: Bob and Krystal Standage

WOOFER CONSTRUCTION & IRRIGATION
 1110 Plains Ave
 785-462-7441

ETHAN COLE STICKEL



I plan to attend Fort Hays State University and major in biology.
Parents: Terry and Tina Stickel

ROOFMASTERS ROOFING CO.INC
 425 East Hill
 785-460-6642

WOOFER CONSTRUCTION & IRRIGATION
 1110 Plains Ave
 785-462-7441

DYLAN STITHEM



I plan to attend Fort Hays State University.
Parents: Rob and Anna Stithem and Lisa Stithem

Uptown Style
 Salon & Day Spa
Integrating Wellness & Beauty
 505 E. 4th, Colby • 785-462-2383

WOOFER CONSTRUCTION & IRRIGATION
 1110 Plains Ave
 785-462-7441