

K-State graduates include students from county schools

Several Thomas County students were among more than 1,250 candidates for graduation in Kansas State University commencement ceremonies Friday and Saturday on the campuses in Manhattan and Salina.

Nearly 1,000 bachelor's degrees, more than 200 master's degrees, about 50 doctoral degrees and more than 10 associate degrees were to be awarded. About 25 students earned multiple degrees, and more than 120 earned their degrees through distance education programs.

Candidates for graduation included:

Colby: Tanner Vincent Glad, Bachelor of Science; Vanessa Marie Scheideman, Bachelor of Science in education; Valerie Ann Donelan, Bachelor of Science in dietetics; Marcia Jean Kaus, Bachelor of Science and Bachelor of Science in education.

Brewster: Tyler Michael Johnson, Bachelor of Science in computer science.

Menlo: Jeremy Scott Owings, Bachelor of Science.

Golden Plains High School: Darcie Marie Spresser, Bachelor of Science.

Course offers help for family farms

A secure future, a farm for future generations. It's everything a farm family wants.

"You can learn to secure your farm's future and protect your family's legacy by enrolling now in an online course just for farm families," said Barbara O'Neill, Extension specialist in financial resource management at Rutgers University Cooperative Extension. "Investing for Farm Families provides the information you need to make strategic decisions while weaving together farm and personal investments."

The eight-lesson course helps farm families plan for a financially stable future that meets their long-term needs, O'Neill said. It was developed by a team of Extension educators from several states. Farm families can work at their own pace while taking the course.

"You can learn to increase your future financial security," O'Neill said, "identify investment strategies, know asset allocation basics, evaluate investment production alternatives to agriculture business risks and invest for retirement and farm succession planning."

She said farm families have unique investing needs, which the course addresses. Surveys and focus groups with farmers provided the course developers with insights about investment concerns and learning preferences.

Tim Eggers, Extension agricultural economist with Iowa State University, said he and others affiliated with Annie's Project have encouraged farmers to enroll in the course. Annie's Project is an educational program offered in 20 states, dedicated to strengthening women's roles in the modern farm enterprise.

"The primary benefit of the

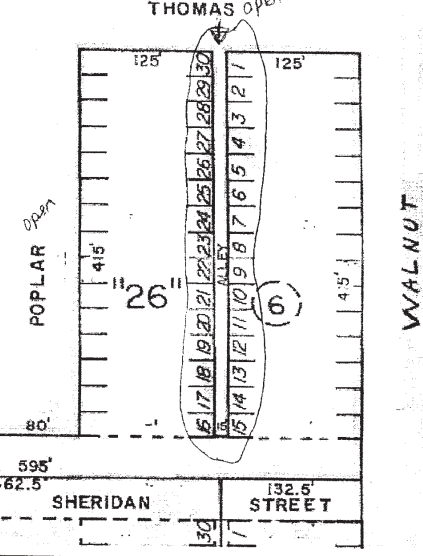
course is the thoughtful analysis of how on- and off-farm investments can be balanced based on the participant's unique situation," Eggers said. "Farm and ranch families tend to be more comfortable with the investments they can see and use. Investing for Farm Families can help farmers to diversify their investments."

O'Neill and Eggers, along with several Extension staff from around the nation, developed the course through the Online Investment Education project, which was created to reach farm families nationwide with investment information. It was financed with a two-year grant to the eXtension Foundation from the Financial Industry Regulatory Authority Investor Education Foundation.

Information and enrollment are available at www.extension.org/pages/InvestingforFarmFamilies.

Public Notice

Notice is hereby given a petition has been filed with the Gem City Council by Denny P. and Traci L. Nieman of Gem, Kansas, praying for the vacation of the alley in Block 6 located between Sheridan and Thomas streets, lying West of Walnut Street and East of Poplar Street in the original city of Gem, Kansas.



Notice is hereby given that a public hearing shall be held on December 28, 2009 at 8:00 p.m. in the Gem Community Building, at 415 Elm Street, at which time the Gem City Council may approve or disapprove the request for the vacating of said Alley.

Dated this 27th day of November, 2009.

Helen M. Poland, Gem City Clerk

(Published in the Colby Free Press on Monday, December 14, 21, 2009)

Lawsuit defends fish pedicures in Arizona

MESA, Ariz. (AP) — A conservative watchdog group has filed a lawsuit against an Arizona agency on behalf of a salon owner who uses nibbling fish to remove dead skin from the feet of customers.

The lawsuit filed by the Goldwater Institute on Monday says the Arizona Board of Cosmetology overstepped its bounds when it decided

the fish perform pedicures and are subject to regulatory control.

Cindy Vong opened Spa Fish Therapy in Gilbert last year and charged customers \$30 to plunge their feet into a clean tank filled with fish, which nibble on customers' feet, removing dead skin.

The therapy is popular in Asia and some U.S. states. It uses small fish imported from China.

The board ordered the spa to close because the fish cannot be sterilized. Vong says the move cost her a substantial investment and lost business.

BUSINESS DIRECTORY

To have your ad placed in the Business Directory call Andrea, Shaly or Heather today at 462-3963.



Looking to sell or transfer property? Let **Quality Title & Abstract, Inc.** in Colby handle your title insurance and escrow needs. We are doing business with Old Republic National Title Insurance est. 1907, an A rating company.

Contact Paul Bailey or Angela Zimmermann

Quality Title & Abstract Inc.

785-460-1858 qta@st-tel.net

Clarity Life Coaching Services
www.clarityle.com

Laura Wing, PLC
Professional Life Coach

Become a winning champion in your own life! Live your dreams!

Phone: 785-821-4277 or 719-646-1514
E-mail: Laura_Wing_plc@yahoo.com

VISIT

Prairie Museum of Art & History

9-5 M-F
1-5 Sat. & Sun.
Closed Mondays Nov.-Mar.
Closed Holidays

- World Class Kuska Collection
- Kansas KIDS Corner
- Cooper Barn an 8 Wonder of KS Architecture
- Hands on HIGH PLAINS HISTORY
- Prairie Museum Art

Thomas County Historical Society
1905 S. Franklin * Colby, KS 67701
785 460-4590
prairiem@st-tel.net
www.prairiemuseum.org




Give it a try! See what the business directory can do for you!

ROSALES PLUMBING

For All Your Commercial & Residential Plumbing Needs
24-Hour Emergency Service Available
Also Servicing Heating, Air and Septic Tank Systems!

David J. Rosales
Owner

(785) 675-8254 or (785) 657-7251
832 17th Street • PO Box 742
Hoxie, Kansas 67740





Live The Life You've Always Imagined!

- Spacious Residences
- State-of-the-art Appliances
- Elegant Decor
- Unrivaled Amenities

UNITS NOW AVAILABLE!

RIVERSIDE PLAZA
Luxury Retirement Living

Call for an appointment 785-822-1300
600 E. Elm, Salina • Visit our website: www.rsplaza.com

WORLDWIDE • Vacation Packages • Cruises • Tours • Groups • Flights • Hotels • Trains • Cars

155 W. 4th, Colby, KS 67701
Phone: 785.462.6999
Fax: 785-460-0852
Toll Free: 1.888.690.7077



Round Trip Travel

BOOK HOLIDAY VACATIONS NOW!

Call for Bus Tours Schedules.

All specials may be for specific dates and are subject to availability

VACATION SPECIALS	From	# Nights
LAS VEGAS	Air & Hotel \$250	4
DISNEY WORLD	Park Passes, Air & Hotel \$505	4
MEXICO	Air & Hotel \$800	3
CARIBBEAN CRUISE	Cruise & Air \$1,050	5
ALASKAN CRUISE	Cruise & Air \$1,500	7
HAWAII	Air & Hotel \$740	3
LONDON, ENGLAND	Air & Hotel \$700	3
AMTRAK EXPLORE AMERICA	Air & Hotel \$359	Max 45

Per Adult



Kitchen & Bath Sales & Service

Custom Cabinetry • Counter Tops
Design, Fabrication & Installation
Wood Floor Installation & Refinishing

Shop 462-7843 • Dennis 443-3140
www.toolboxkitchen.com

ROOFMASTERS

Your Local Roofing Contractor

425 East Hill, Colby, KS
Licensed - Bonded - Insured

RESIDENTIAL	1-800-536-6642	COMMERCIAL
Tamko Shingles	1-785-462-6642	Rubber Single Ply
GAF Shingles		White TPO Single Ply
Wood Shingles		Built Up Systems
Metal Roofs		Modified Systems

FREE ESTIMATES

Elastomeric Rubber Coating For Metal Roofs



Need a new insurance partner?

Auto | Home | Business | Farm/Ranch | Life
College | Retirement

David Browne III
550 N Franklin
Colby, KS
(785) 462-3388

FARM BUREAU FINANCIAL SERVICES
Insurance • Investments
www.fbfs.com

Farm Bureau Life Insurance Company/West Des Moines, IA, Farm Bureau Mutual Insurance Company/West Des Moines, IA, Companies of Farm Bureau Financial Services © 2007 FBL Financial Group, Inc. 327



FAMILY DENTAL CARE

The Latest Technology and Most Complete Care Available!

- Root Canals • Orthodontics
- Implants • Wisdom Tooth Surgery

New Patients Welcome
No Referral Necessary ~ Financing Avail.

1690 W. 4th St., Colby ~ 785-460-3999
Toll Free: 1-866-305-3999



SHAWN D. JENSEN, D.D.S

NEW SYSTEM

PROFESSIONAL WINDOW CLEANING

(800) 611-6735

www.MyWindowCleaner.net
Serving Colby since 1992!

Commercial • Residential • Free Estimates





SPECIALIZING IN YOUR PET'S GROOMING NEEDS

Jan Klein, Groomer

113 State Street
Atwood, KS 67730

Phone 785-626-6249

colby Massage Therapy Elite

Cynthia England
Massage Therapist

Located in Colby, KS
Gift Certificates Available!
By appointment only.

785-443-2254
\$35 for one hour
\$50 for 1 1/2 hours

Bring yourself back to balance



LIFE insurance that makes it WORTH LIVING.

Jane W. Johnson, Agent
905 E 4th Street
Colby, KS 67701
Bus: 785-462-7525
jane.johnson.gh2i@statefarm.com

Protect your family for less, build cash value or even get your premiums back if the death benefit has not been paid out at the end of the level premium period.

 **State Farm**
statefarm.com

Return of Premium policy series 08025 in all states except A08025 in WI and not available in CA, FL, MD, MN, NH, NY, NC, OR, PA, UT, VT, and WA.

State Farm Life Insurance Company, Bloomington, IL (Not licensed in MA, NY and WI)
State Farm Life and Accident Insurance Company (Licensed in NY and WI), Bloomington, IL



"NOTHING TO IT BUT TO DO IT"

- Painting
- Residential Roofing
- Siding
- Commercial Roofing
- Small Construction Projects

AB.CD. ROOFING & CONSTRUCTION
"NOTHING TO IT BUT TO DO IT"

Adam Bowers
Owner/Operator
785-462-0438
Colby, KS



Curtis Dulany
Owner/Operator
785-269-7382
Brewster, KS

Licensed and Insured